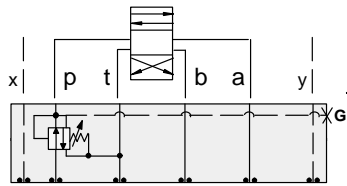




ISO 05 X,Y SANDWICH BODIES



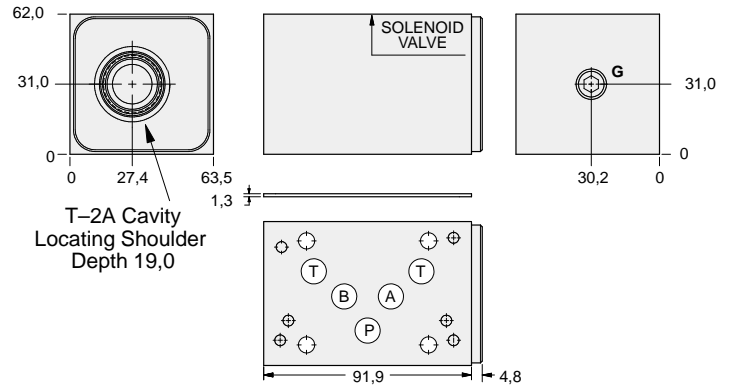
- Aluminium rated to 210 bar and SG Iron rated to 350 bar.
- See page viii for ordering cartridge/body and seals. Pressure ratings, material specifications on page xiv.



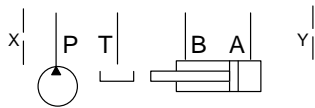
FUNCTION

On **P** Tank to **T**
Drained to **T**

Reducing/Relieving Valves



Order Retainer and Seal Kits separately.
(See Page 12.002)



| Gauge Port (Plugged) | ALUMINIUM | | SG IRON | |
|-------------------------|--------------|------------|--------------|------------|
| | Model Code | List Price | Model Code | List Price |
| .25 NPTF | BJP | | BJP/S | |
| .25 BSPP | BJP/M | | BJP/T | |

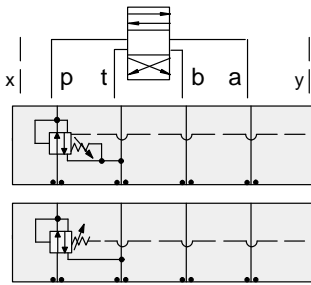
| TYPICAL CARTRIDGES USED WITH BODIES SHOWN ABOVE | | | |
|---|---|--|--|
| | Pilot Operated Reducing/Relieving Valve | | |
| | PPFB Page 3.10 | | |
| | Air Controlled, Pilot Operated Reducing/Relieving Valve | | |
| | PPFC Page 3.12 | | |
| | | | |
| | | | |
| OTHER VALVES: | | | |



ISO 05 SANDWICH BODIES



- Aluminium rated to 210 bar and SG Iron rated to 350 bar.
- See page viii for ordering cartridge/body and seals. Pressure ratings, material specifications on page xiv.

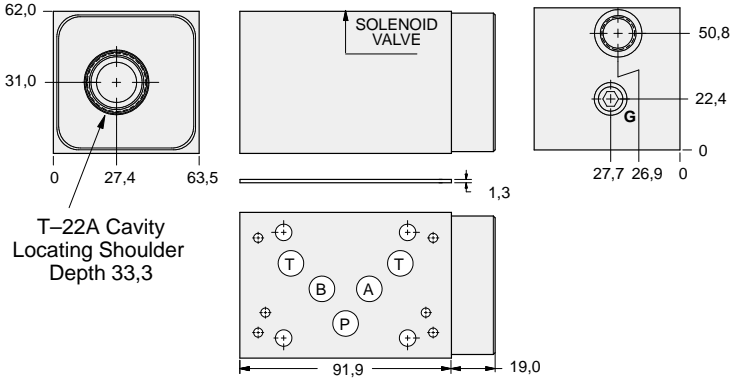


FUNCTION

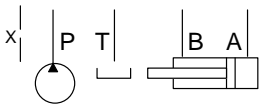
On P Tank to T
Vented Externally

On P Tank to T
Drained Externally

Reducing/Relieving Valves



Order Retainer and Seal Kits separately.
(See Page 12.002)



| External Port | Gauge Port (Plugged) | ALUMINIUM | | SG IRON | |
|---------------|-------------------------|------------|------------|------------|------------|
| | | Model Code | List Price | Model Code | List Price |
| SAE-6 | .25 NPTF | NJP | | NJP/S | |
| .25 BSPP | .25 BSPP | NJP/M | | NJP/T | |

05xyREDUCING/RELIEVING

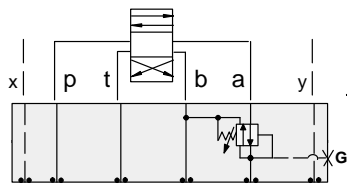
| TYPICAL CARTRIDGES USED WITH BODIES SHOWN ABOVE | | | |
|---|---|--|--|
| | Pilot Operated Reducing/Relieving Valve with Drain Port | | |
| | PVFA Page 3.14 | | |
| | Pilot Operated Reducing/Relieving Valve with Vent Port | | |
| | PVFB Page 3.16 | | |
| | | | |
| | | | |
| OTHER VALVES: | | | |



ISO 05 X,Y SANDWICH BODIES



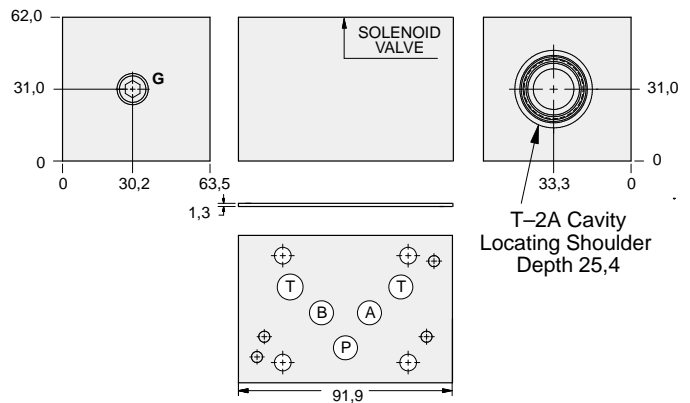
- Aluminium rated to 210 bar and SG Iron rated to 350 bar.
- See page viii for ordering cartridge/body and seals. Pressure ratings, material specifications on page xiv.



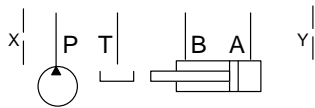
FUNCTION

On A Tank to B
Drained to B

Reducing/Relieving Valves



Order Retainer and Seal Kits separately.
(See Page 12.002)



| Gauge Port (Plugged) | ALUMINIUM | | SG IRON | |
|-------------------------|------------|------------|------------|------------|
| | Model Code | List Price | Model Code | List Price |
| .25 NPTF | BJA | | BJA/S | |
| .25 BSPP | BJA/M | | BJA/T | |

05xy REDUCING/RELIEVING

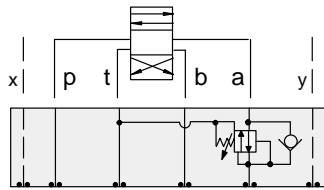
| TYPICAL CARTRIDGES USED WITH BODIES SHOWN ABOVE | | | |
|---|---|--|--|
| | Pilot Operated Reducing/Relieving Valve | | |
| | PPFB Page 3.10 | | |
| | | | |
| | | | |
| | | | |
| OTHER VALVES: | | | |



ISO 05 X,Y SANDWICH BODIES



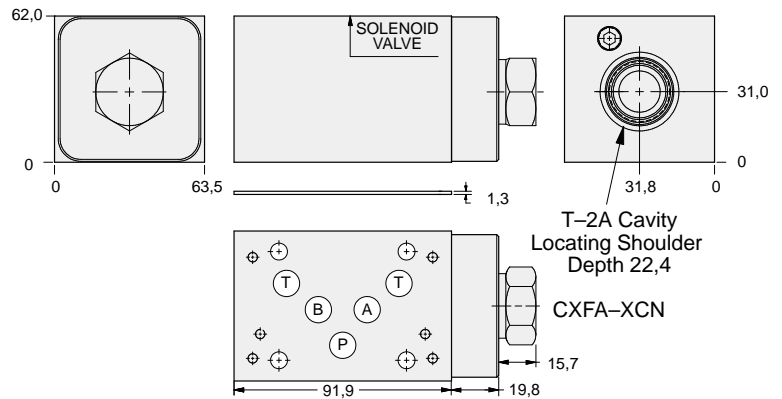
- Aluminium rated to 210 bar and SG Iron rated to 350 bar.
- See page viii for ordering cartridge/body and seals. Pressure ratings, material specifications on page xiv.



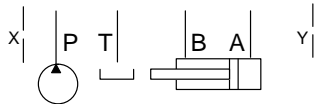
FUNCTION

On A Tank to T
Drained to T
Reverse FF Check

Reducing/Relieving Valves

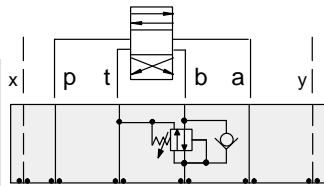


Order Retainer and Seal Kits separately.
(See Page 12.002)



| ALUMINIUM | | SG IRON | |
|------------|------------|------------|------------|
| Model Code | List Price | Model Code | List Price |
| BJ2 | | BJ2/S | |

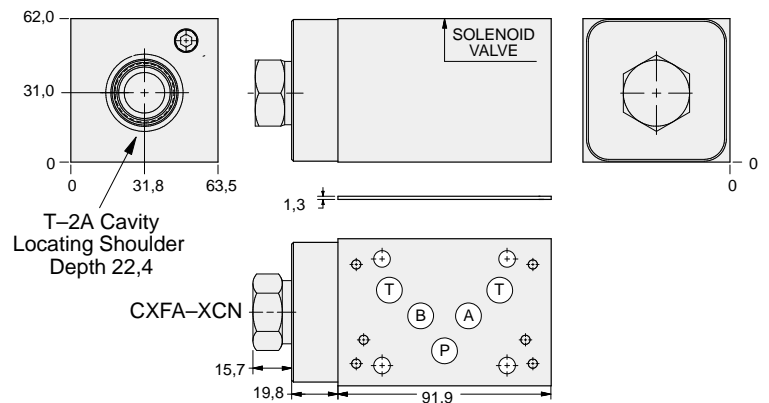
05xyREDUCING/RELIEVING



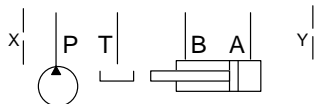
FUNCTION

On B Tank to T
Drained to T
Reverse FF Check

Reducing/Relieving Valves



Order Retainer and Seal Kits separately.
(See Page 12.002)



| ALUMINIUM | | SG IRON | |
|------------|------------|-------------|------------|
| Model Code | List Price | Part Number | List Price |
| BJ3 | | BJ3/S | |

TYPICAL CARTRIDGES USED WITH BODIES SHOWN ABOVE

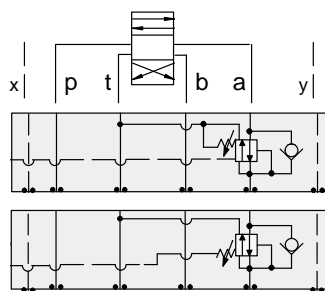
| | | | |
|---------------|---|--|--|
| | Pilot Operated Reducing/Relieving Valve | | |
| | PPFB Page 3.10 | | |
| | Air Controlled, Pilot Operated Reducing/Relieving Valve | | |
| | PPFC Page 3.12 | | |
| OTHER VALVES: | | | |
| | | | |



ISO 05 X,Y SANDWICH BODIES



- Aluminium rated to 210 bar and SG Iron rated to 350 bar.
- See page viii for ordering cartridge/body and seals. Pressure ratings, material specifications on page xiv.

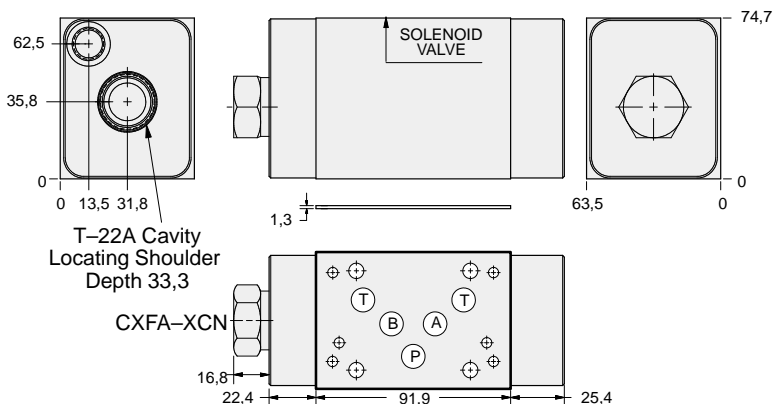


FUNCTION

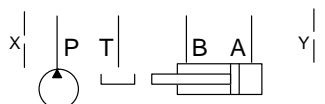
On A tank to T
Vented Externally
Reverse FF Check

On A tank to T
Drained Externally
Reverse FF Check

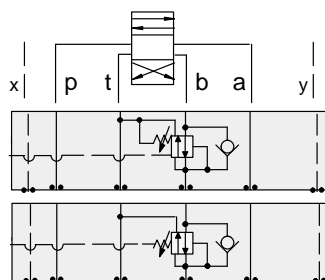
Reducing/Relieving Valves



Order Retainer and Seal Kits separately.
(See Page 12.002)



| External Port | ALUMINIUM | | SG IRON | |
|---------------|------------|------------|------------|------------|
| | Model Code | List Price | Model Code | List Price |
| SAE-6 | NJ2 | | NJ2/S | |
| .25 BSPP | NJ2/M | | NJ2/T | |

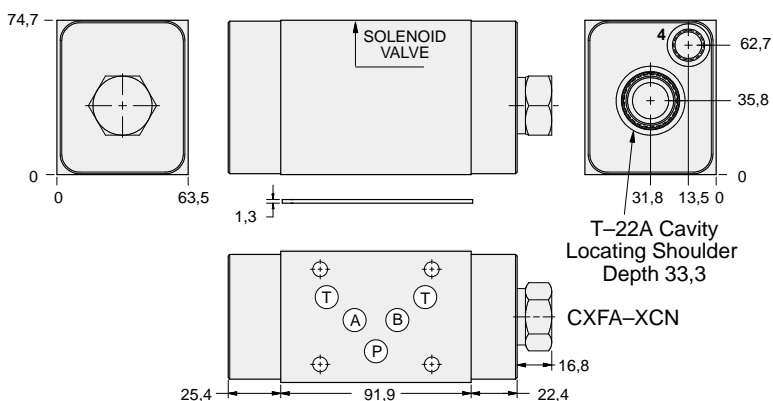


FUNCTION

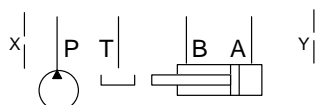
On B Tank to T
Vented Externally
Reverse FF Check

On B Tank to T
Drained Externally
Reverse FF Check

Reducing/Relieving Valves



Order Retainer and Seal Kits separately.
(See Page 12.002)



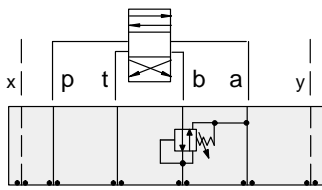
| Mounting Holes | ALUMINIUM | | SG IRON | |
|----------------|------------|------------|-------------|------------|
| | Model Code | List Price | Part Number | List Price |
| SAE-6 | NJ3 | | NJ3/S | |
| .25 BSPP | NJ3/M | | NJ3/T | |

TYPICAL CARTRIDGES USED WITH BODIES SHOWN ABOVE

| | | | |
|---------------|---|--|--|
| | Pilot Operated Reducing/Relieving Valve with Drain Port | | |
| | PVFA Page 3.14 | | |
| | Pilot Operated Reducing/Relieving Valve with Vent Port | | |
| | PVFB Page 3.16 | | |
| OTHER VALVES: | | | |

05xy REDUCING/RELIEVING

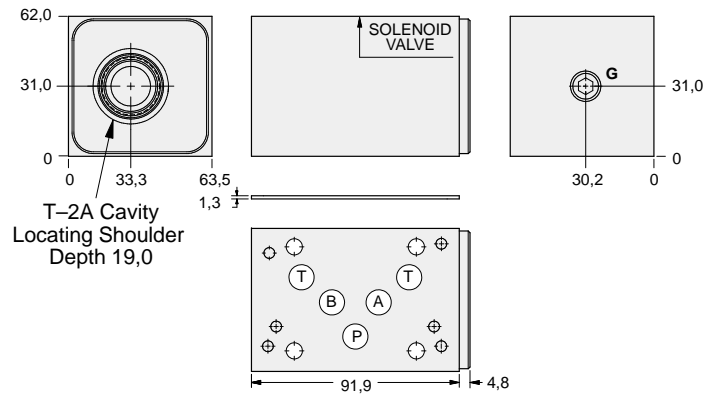
- Aluminium rated to 210 bar and SG Iron rated to 350 bar.
- See page viii for ordering cartridge/body and seals. Pressure ratings, material specifications on page xiv.



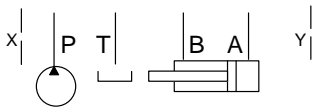
FUNCTION

On **B** Tank to **A**
Drained to **A**


Reducing/Relieving Valves



Order Retainer and Seal Kits separately.
(See Page 12.002)



| Gauge Port (Plugged) | ALUMINIUM | | SG IRON | |
|-------------------------|--------------|------------|--------------|------------|
| | Model Code | List Price | Model Code | List Price |
| .25 NPTF | BJB | | BJB/S | |
| .25 BSPP | BJB/M | | BJB/T | |

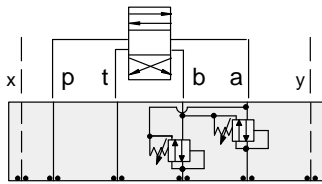
| TYPICAL CARTRIDGES USED WITH BODIES SHOWN ABOVE | | | |
|---|--|--|--|
|  | <i>Pilot Operated Reducing/Relieving Valve</i> | | |
| | PPFB Page 3.10 | | |
| | | | |
| | | | |
| | | | |
| | | | |
| OTHER VALVES: | | | |



ISO 05 X,Y SANDWICH BODIES



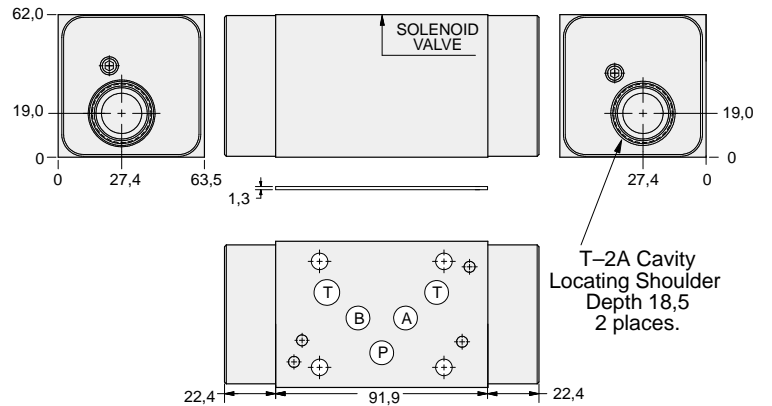
- Aluminium rated to 210 bar and SG Iron rated to 350 bar.
- See page viii for ordering cartridge/body and seals. Pressure ratings, material specifications on page xiv.



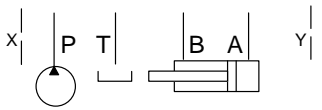
FUNCTION

On **A** and **B**
Tanks and Drains to
Opposite Port

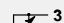
Reducing/Relieving Valves



Order Retainer and Seal Kits separately.
(See Page 12.002)



| ALUMINIUM | | SG IRON | |
|------------|------------|------------|------------|
| Model Code | List Price | Model Code | List Price |
| BJY | | BJY/S | |

| TYPICAL CARTRIDGES USED WITH BODIES SHOWN ABOVE | | | |
|---|--|--|--|
|  | <i>Pilot Operated Reducing/Relieving Valve</i> | | |
| | PPFB Page 3.10 | | |
| | | | |
| | | | |
| | | | |
| | | | |
| OTHER VALVES: | | | |