

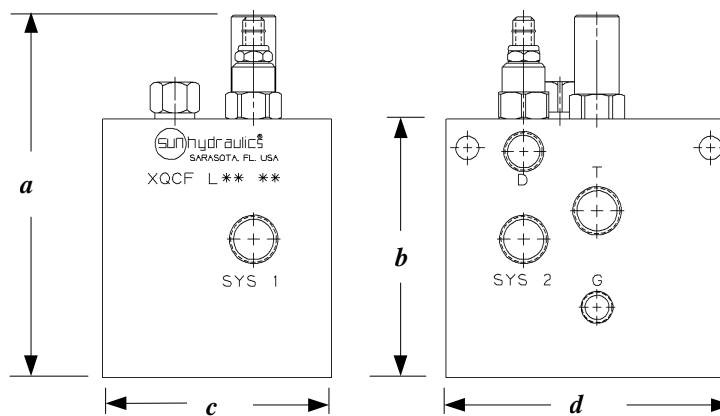
NEW

PRODUCT SOLUTIONS

March 22, 1999
#999-901-189

Hi-Low Pump Unloader or Accumulator Charge Pump Unloader Valve Packages

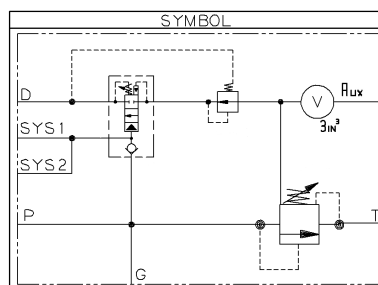
Sun Hi-Low and Accumulator Charge Pump Unloader Valve Packages are pre-engineered valve assemblies used in dual pump and accumulator circuits. In hi-low circuits the valve package automatically unloads/loads one pump when a preset pressure and differential are reached. When used as an accumulator charge pump unloader the package will unload the pump when a preset pressure is reached and reload the pump when the pressure falls to a set differential. The package features a tunable soft pump unload feature and other unique options. Available in SAE O-ring, BSPP, and 4-bolt flange port configurations.



Flow	Sun Model Code*	a	b	c	d
15 GPM	XQCF-L**-**	6.31	4.50	4.00	5.00

*Add modifier /S for ductile iron

XQCF-L**-**

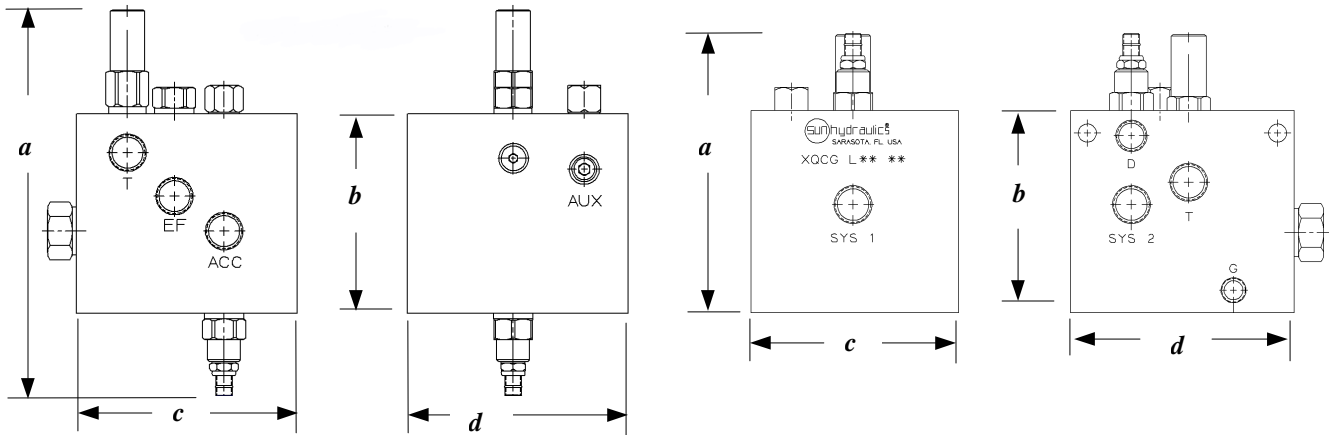


Benefits:

- Convenient – completely assembled and ready to operate
- Reduced system shock – tunable soft pump unload feature
- Versatile
 - Flows up to 15 GPM
 - Pressure sets from 150 to 5000 psi
 - Unload/load differential from 15% to 50%
- Options
 - Priority accumulator charge
 - Automatic accumulator discharge on pump shutdown
 - Remote pressure sense

XQCK-L**.**

XQCG-L**.**

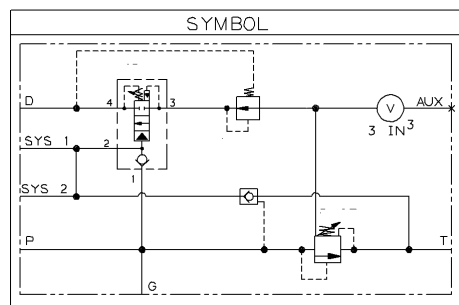
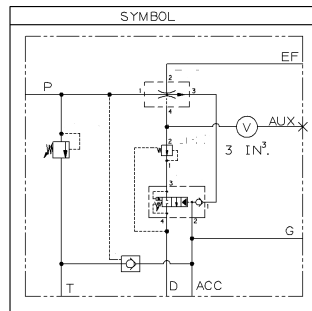


Flow	Sun Model Code*	a	b	c	d
15 GPM	XQCK-L**.**	8.76	4.50	5.00	5.00
15 GPM	XQCG-L**.**	6.22	4.50	4.64	5.00

*Add modifier /S for ductile iron

XQCK-L**.**

XQCG-L**.**



X Q C * -- L * * -- * * / S

