

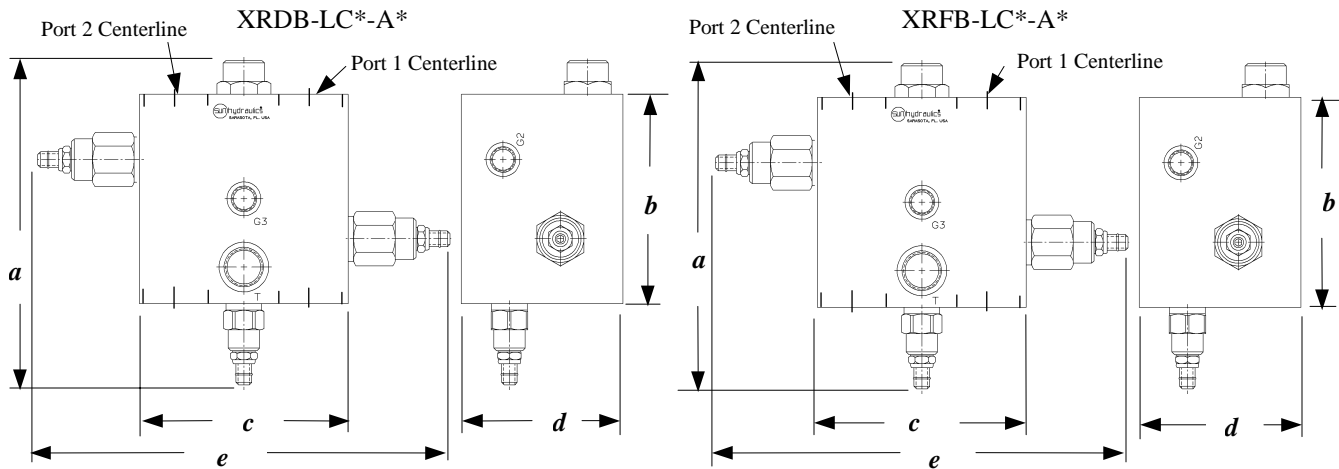
NEW PRODUCT SOLUTIONS



March 22, 1999
#999-901-188

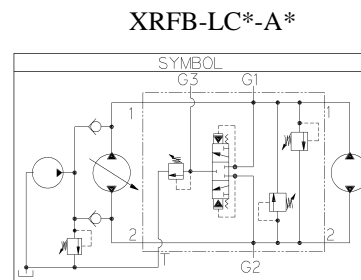
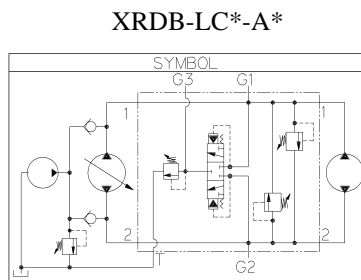
Hydrostatic Transmission Valve Packages

Sun Hydrostatic Transmission Valve Packages are compact pre-engineered valve assemblies. They provide reliable hot oil shuttle, cross-port and low side relief functions in a convenient ready-to-install package. Sun fast acting cartridge type valves are used throughout for high reliability, small size, low pressure losses, and ease of service. Available in SAE O-ring, BSPP, and 4-bolt flange port configuration.



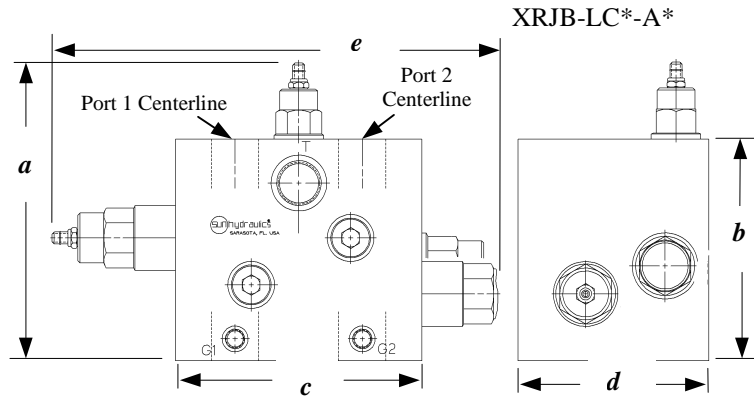
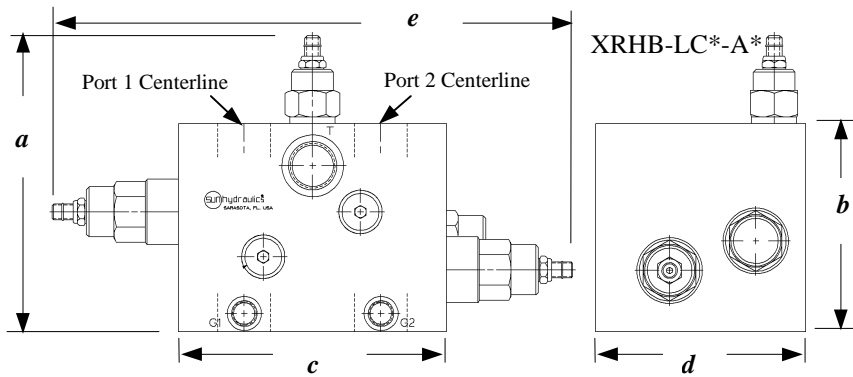
Nominal Flow	Sun Model Code*	a	b	c	d	e
30 GPM	XRDB-LC*-A*	7.16	4.50	4.00	3.62	8.68
40 GPM	XRFB-LC*-A*	7.75	5.00	5.00	3.88	9.88

*Add modifier /S to order ductile iron.



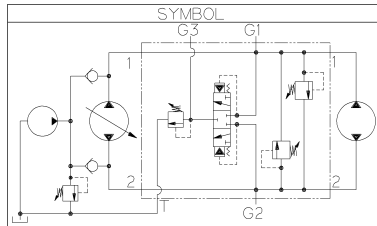
Benefits:

- Convenient – completely assembled ready to install
- Built in hot oil shuttle valve
- Versatile
 - Flows from 30 to 120 GPM
 - Up to 5000 psi rated pressure
 - Cross Port Relief Valve: Adjustable 1000-6000 psi
 - Low Side Relief Valve: Adjustable 60-800 psi
 - Shuttle Valve Control: Pressure 180-200 psi
- Reliable
 - Fast acting cross-port relief valves
 - Quiet, stable pilot operated low side relief valve

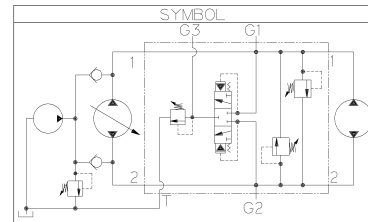


	<i>Sun Model Code*</i>	<i>a</i>	<i>b</i>	<i>c</i>	<i>d</i>	<i>e</i>
80 GPM	XRHB-LC*-A*	7.03	4.94	6.38	5.00	12.38
120 GPM	XRJB-LC*-A*	9.35	6.94	7.75	6.00	15.51

*Add modifier /S to order ductile iron.



XRHB-LC*-A*



XRJB-LC*-A*

XR*B-LC*--**/S

<i>Flow Capacity</i>		<i>Seal</i>		<i>Pilot Ratio</i>		<i>Main Port</i>		<i>Tank Ports</i>	
D	30 GPM	N	Buna-N	A	15%	30 GPM	L SAE-12	SAE-8	
F	40 GPM	V	Viton	B	20%		W 3/4 -11 BSPP	3/8-19 BSPP	
H	80 GPM			C	30%	40 GPM	M SAE-16	SAE-10	
J	120 GPM			D	50%		X 1-11 BSPP	1/2-14 BSPP	
						80 GPM	Q 1 1/4 4-Bolt Flg	SAE-12	
							Q/M 1 1/4 4-Bolt Flg	3/4-14 BSPP	
							Metric		
						120 GPM	R 1 1/2 4-Bolt Flg	SAE-16	
							R/M 1 1/2 4-Bolt Flg	1-11 BSPP	
							Metric		