

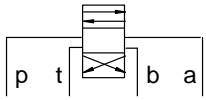


ISO 03 SANDWICH BODIES

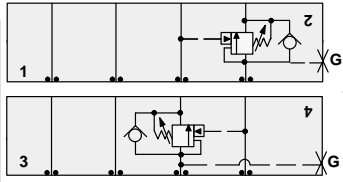


- Aluminium rated to 210 bar and SG Iron rated to 350 bar.
- See page viii for ordering cartridge/body and seals. Pressure ratings, material specifications on page xiv.

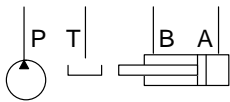
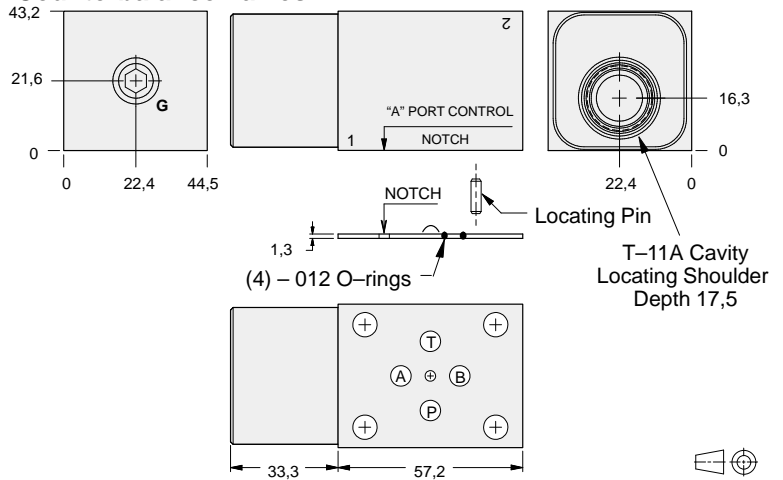
03 COUNTERBALANCE



FUNCTION



Counterbalance Valves



Gauge Port (Plugged)	ALUMINIUM		SG IRON	
	Model Code	List Price	Model Code	List Price
.25 NPTF	EBA		EBA/S	
.25 BSPP	EBA/M		EBA/T	

TYPICAL CARTRIDGES USED WITH BODIES SHOWN ABOVE

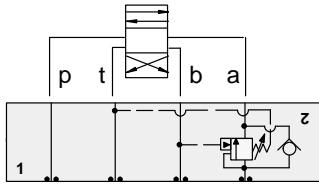
	Counterbalance Valve, 3:1 Pilot Ratio		
	CBCA Page 4.10		
	Counterbalance Valve, 4.5:1 Pilot Ratio		
	CBCG Page 4.12		
	Counterbalance Valve, 10:1 Pilot Ratio		
	CBCH Page 4.14		
OTHER VALVES:			



ISO 03 SANDWICH BODIES



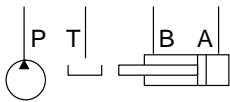
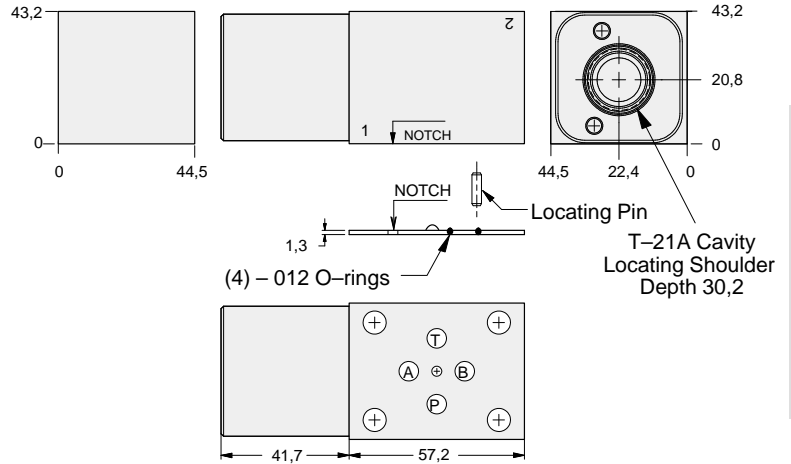
- Aluminium rated to 210 bar and SG Iron rated to 350 bar.
- See page viii for ordering cartridge/body and seals. Pressure ratings, material specifications on page xiv.



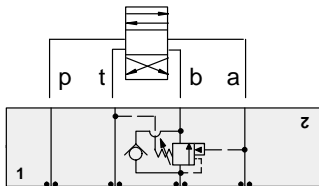
FUNCTION

On A Pilot from B
Vent to T

Counterbalance Valves



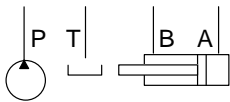
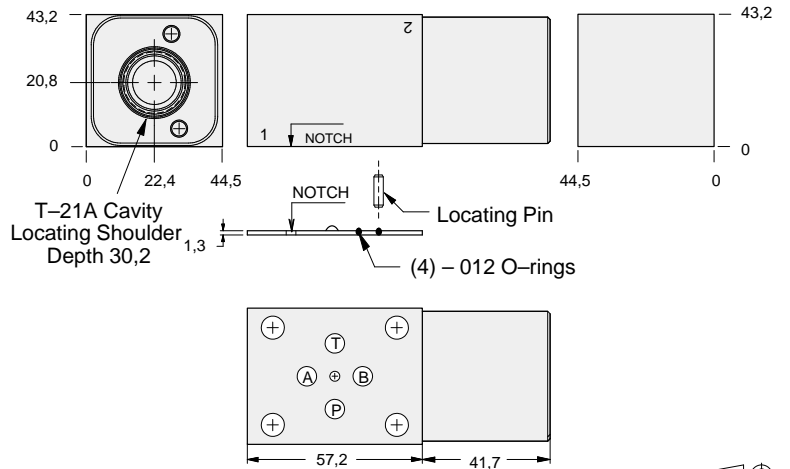
ALUMINIUM		SG IRON	
Model Code	List Price	Model Code	List Price
MBA		MBA/S	



FUNCTION

On B Pilot from A
Vent to T

Counterbalance Valves



ALUMINIUM		SG IRON	
Model Code	List Price	Part Number	List Price
MBB		MBB/S	

TYPICAL CARTRIDGES USED WITH BODIES SHOWN ABOVE

	Vented Counterbalance Valve, 3:1 Pilot Ratio		
	CWCA Page 4.18		
	Vented Counterbalance Valve, 5:1 Pilot Ratio		
	CWCG Page 4.20		
OTHER VALVES:			

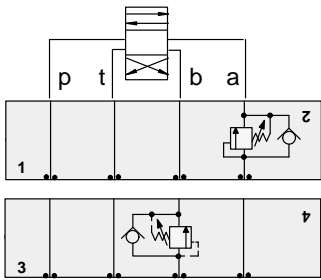


ISO 03 SANDWICH BODIES



- Aluminium rated to 210 bar and SG Iron rated to 350 bar.
- See page viii for ordering cartridge/body and seals. Pressure ratings, material specifications on page xiv.

03 COUNTERBALANCE

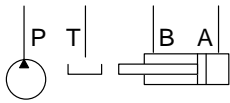
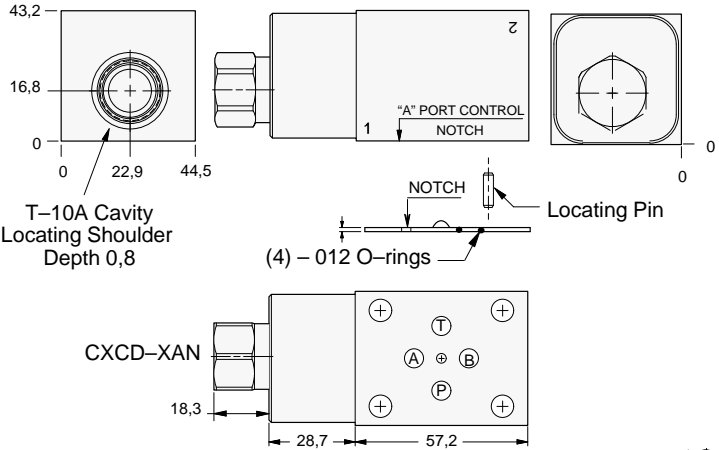


FUNCTION

On A
No pilot assist

On B
No pilot assist

Counterbalance Valves



ALUMINIUM		SG IRON	
Model Code	List Price	Model Code	List Price
FB4		FB4/S	

TYPICAL CARTRIDGES USED WITH BODIES SHOWN ABOVE

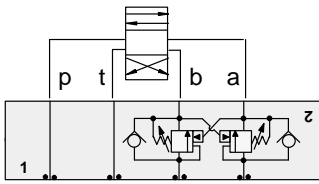
	Direct Acting Relief Valve		
	RDDA Page 1.10		
OTHER VALVES:			



ISO 03 SANDWICH BODIES



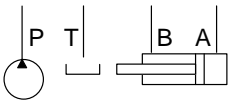
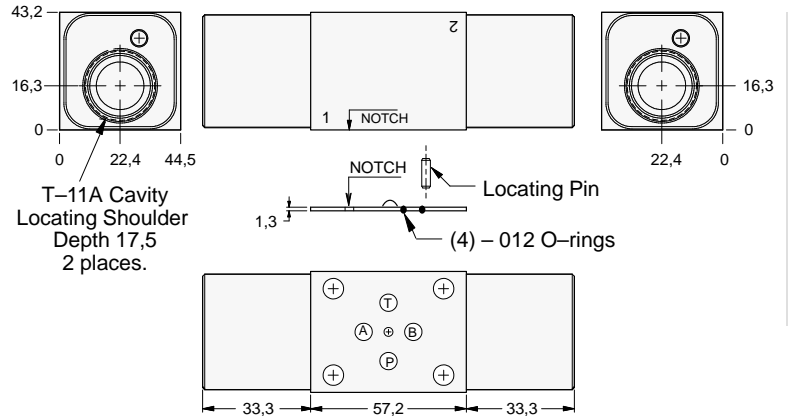
- Aluminium rated to 210 bar and SG Iron rated to 350 bar.
- See page viii for ordering cartridge/body and seals. Pressure ratings, material specifications on page xiv.



FUNCTION

On **A** and **B**
Cross-Piloted

Counterbalance Valves



ALUMINIUM		SG IRON	
Model Code	List Price	Model Code	List Price
EBY		EBY/S	

03 COUNTERBALANCE

TYPICAL CARTRIDGES USED WITH BODIES SHOWN ABOVE			
	Counterbalance Valve, 3:1 Pilot Ratio		
	CBCA Page 4.10		
	Counterbalance Valve, 4.5:1 Pilot Ratio		
	CBCG Page 4.12		
	Counterbalance Valve, 10:1 Pilot Ratio		
	CBCH Page 4.14		
OTHER VALVES:			

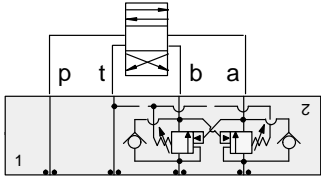


ISO 03 SANDWICH BODIES



- Aluminium rated to 210 bar and SG Iron rated to 350 bar.
- See page viii for ordering cartridge/body and seals. Pressure ratings, material specifications on page xiv.

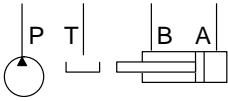
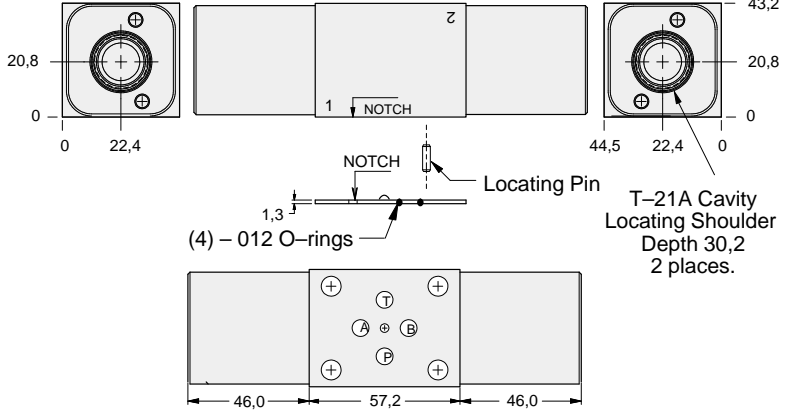
03 COUNTERBALANCE



FUNCTION

On **A** and **B**
Cross-Piloted
Vents to **T**

Counterbalance Valves



ALUMINIUM		SG IRON	
<i>Model Code</i>	<i>List Price</i>	<i>Model Code</i>	<i>List Price</i>
MBY		MBY/S	

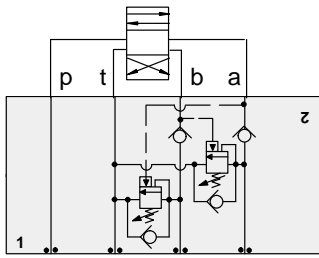
TYPICAL CARTRIDGES USED WITH BODIES SHOWN ABOVE			
	Vented Counterbalance Valve, 3:1 Pilot Ratio		
	CWCA Page 4.18		
	Vented Counterbalance Valve, 5:1 Pilot Ratio		
	CWCG Page 4.20		
OTHER VALVES:			



ISO 03 SANDWICH BODIES



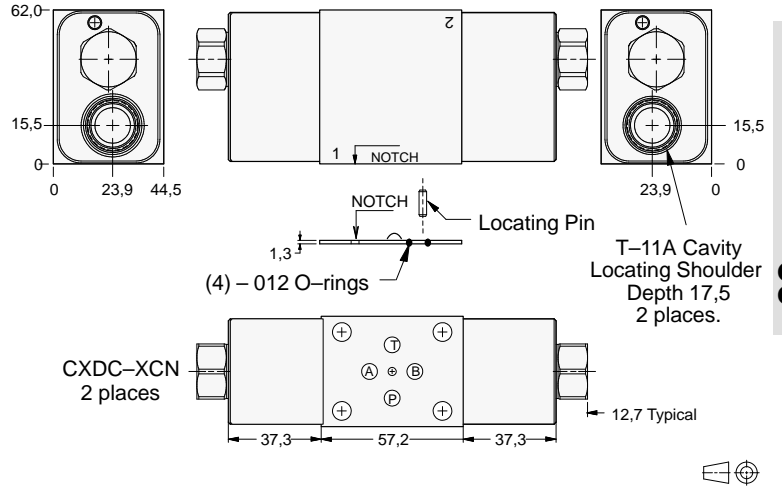
- Aluminium rated to 210 bar and SG Iron rated to 350 bar.
- See page viii for ordering cartridge/body and seals. Pressure ratings, material specifications on page xiv.



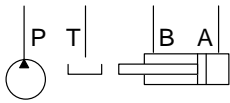
FUNCTION

Cushion Lock
Circuit
On A and B

Counterbalance Valves



03 COUNTERBALANCE



ALUMINIUM		SG IRON	
Model Code	List Price	Model Code	List Price
EB8		EB8/S	

TYPICAL CARTRIDGES USED WITH BODIES SHOWN ABOVE			
	Counterbalance Valve, 3:1 Pilot Ratio		
	CBCA Page 4.10		
	Counterbalance Valve, 4.5:1 Pilot Ratio		
	CBCG Page 4.12		
	Counterbalance Valve, 10:1 Pilot Ratio		
	CBCH Page 4.14		
OTHER VALVES:			