

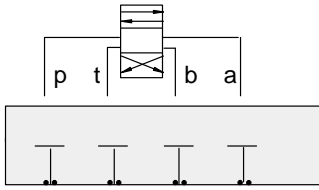


# ISO 03 SANDWICH BODIES



- Aluminium rated to 210 bar and SG Iron rated to 350 bar.
- See page viii for ordering cartridge/body and seals. Pressure ratings, material specifications on page xiv.

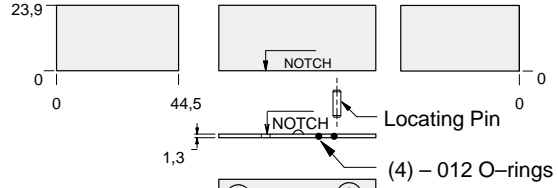
03 COVER PLATE



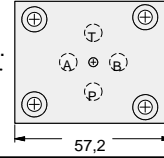
### FUNCTION

All Ports Blocked

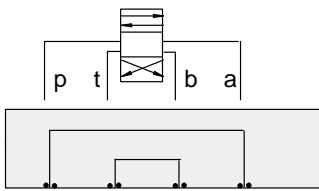
### Cover Plates



Mounting Holes:  
5,1 diameter through hole.  
Counterbore 9,1 diameter  
x 12,7 deep.  
4 places.



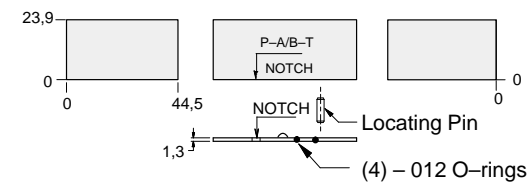
ALUMINIUM		SG IRON	
Model Code	List Price	Model Code	List Price
ZJR		ZJR/S	



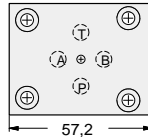
### FUNCTION

P to A and B to T

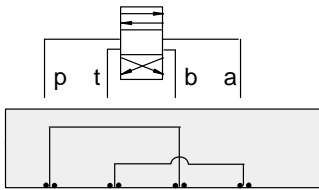
### Cover Plates



Mounting Holes:  
5,1 diameter through hole.  
Counterbore 9,1 diameter  
x 12,7 deep.  
4 places.



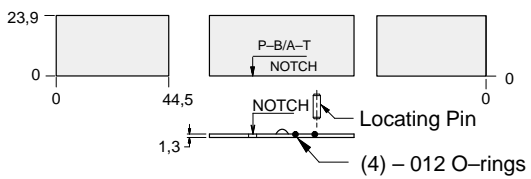
ALUMINIUM		SG IRON	
Model Code	List Price	Model Code	List Price
ZJS		ZJS/S	



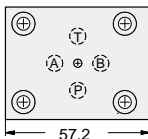
### FUNCTION

P to B and A to T

### Cover Plates

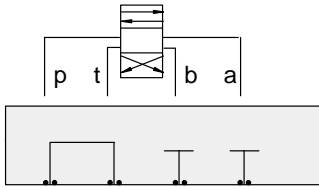


Mounting Holes:  
5,1 diameter through hole.  
Counterbore 9,1 diameter  
x 12,7 deep.  
4 places.



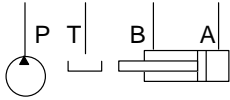
ALUMINIUM		SG IRON	
Model Code	List Price	Model Code	List Price
ZJT		ZJT/S	

- Aluminium rated to 210 bar and SG Iron rated to 350 bar.
- See page viii for ordering cartridge/body and seals. Pressure ratings, material specifications on page xiv.

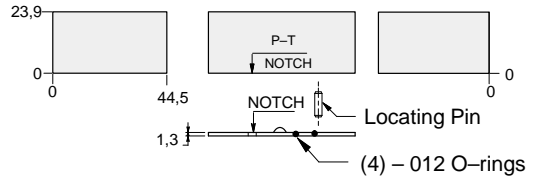


### FUNCTION

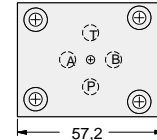
**P to T**  
**A and B blocked**



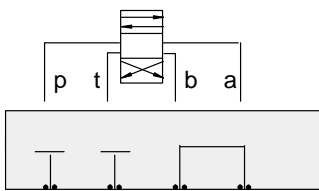
### Cover Plates



Mounting Holes:  
5,1 diameter through hole.  
Counterbore 9,1 diameter  
x 12,7 deep.  
4 places.

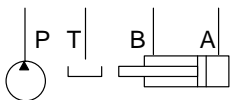


ALUMINIUM		SG IRON	
Model Code	List Price	Model Code	List Price
<b>ZJV</b>		<b>ZJV/S</b>	

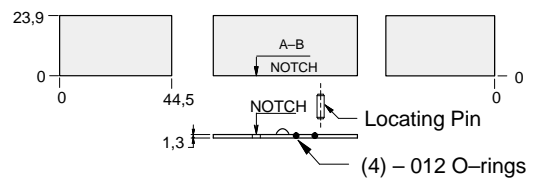


### FUNCTION

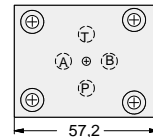
**A to B**  
**P and T blocked**



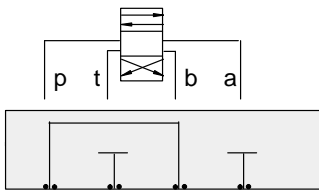
### Cover Plates



Mounting Holes:  
5,1 diameter through hole.  
Counterbore 9,1 diameter  
x 12,7 deep.  
4 places.

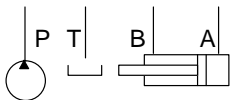


ALUMINIUM		SG IRON	
Model Code	List Price	Model Code	List Price
<b>ZJW</b>		<b>ZJW/S</b>	

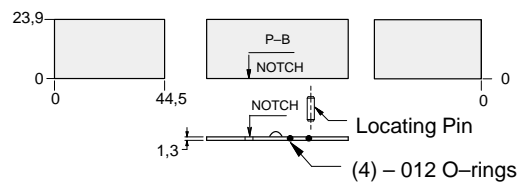


### FUNCTION

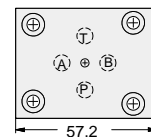
**P to B**  
**A and T blocked**



### Cover Plates



Mounting Holes:  
5,1 diameter through hole.  
Counterbore 9,1 diameter  
x 12,7 deep  
4 places



ALUMINIUM		SG IRON	
Model Code	List Price	Model Code	List Price
<b>ZWE</b>		<b>ZWE/S</b>	

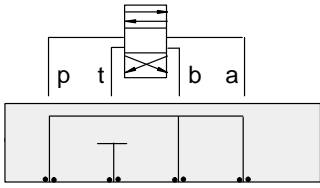


# ISO 03 SANDWICH BODIES



- Aluminium rated to 210 bar and SG Iron rated to 350 bar.
- See page viii for ordering cartridge/body and seals. Pressure ratings, material specifications on page xiv.

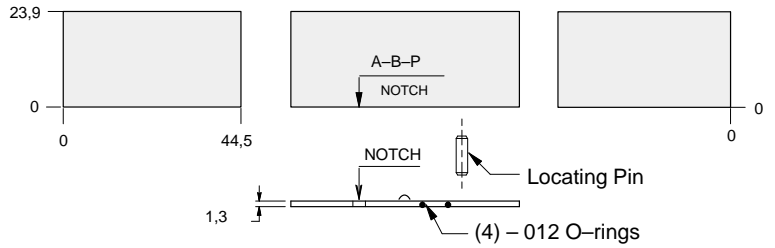
03 COVER PLATE



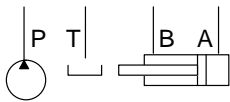
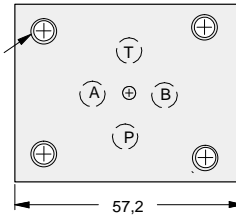
### FUNCTION

**P to A and B  
T blocked**

### Cover Plates



Mounting Holes:  
5,1 Diameter through hole  
Counterbore 9,1 diameter  
x 12,7 deep  
4 places.



ALUMINIUM		SG IRON	
<i>Model Code</i>	<i>List Price</i>	<i>Model Code</i>	<i>List Price</i>
<b>WJG</b>		<b>WJG/S</b>	