

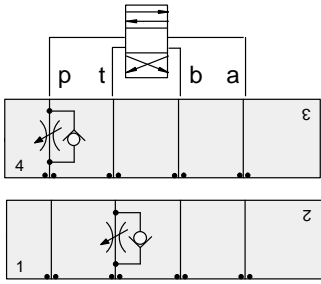


# ISO 03 SANDWICH BODIES



- Aluminium rated to 210 bar and SG Iron rated to 350 bar.
- See page viii for ordering cartridge/body and seals. Pressure ratings, material specifications on page xiv.

03 FLOW CONTROL

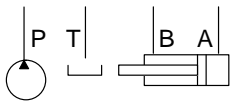
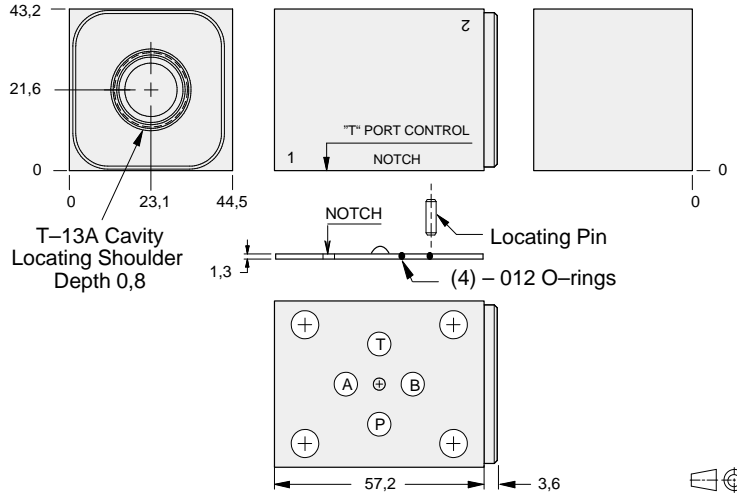


### FUNCTION

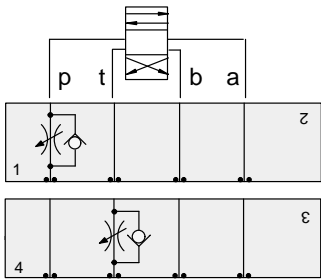
Meter-In P

Meter-Out T

### Flow Control Valves



ALUMINIUM		SG IRON	
Model Code	List Price	Model Code	List Price
<b>GBP</b>		<b>GBP/S</b>	

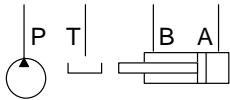
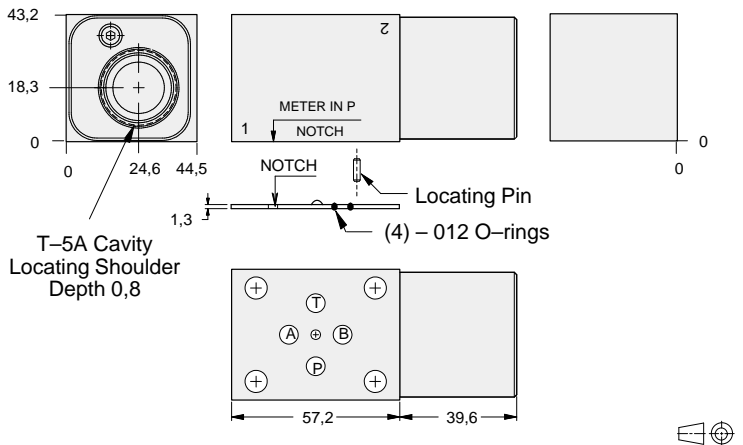


### FUNCTION

Meter-In P  
(High Capacity)

Meter-Out T  
(High Capacity)

### Flow Control Valves



ALUMINIUM		SG IRON	
Model Code	List Price	Part Number	List Price
<b>GBO</b>		<b>GBO/S</b>	

### TYPICAL CARTRIDGES USED WITH BODIES SHOWN ABOVE

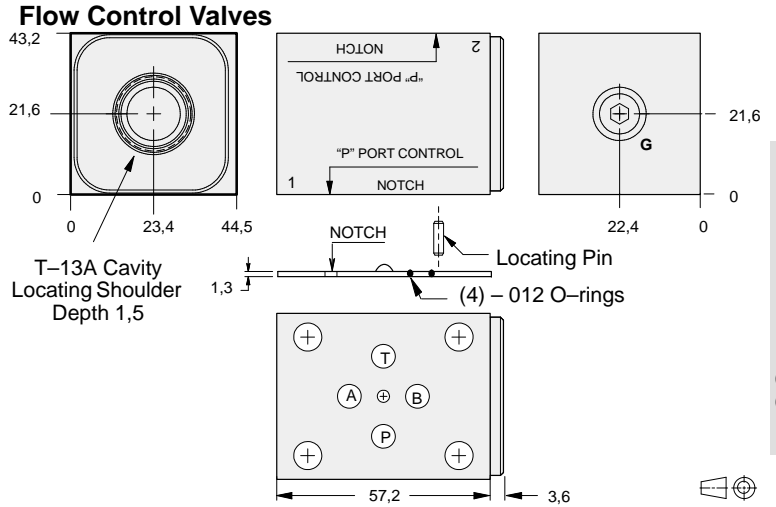
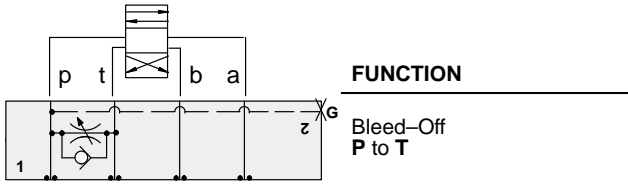
	Fully Adjustable Needle Valve		
	NF*C Page 5.12		
	Fixed Orifice, Pressure-Compensated Flow Control		
	FX*A Page 5.20		
OTHER VALVES:			



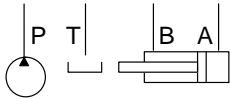
# ISO 03 SANDWICH BODIES



- Aluminium rated to 210 bar and SG Iron rated to 350 bar.
- See page viii for ordering cartridge/body and seals. Pressure ratings, material specifications on page xiv.



03 FLOW CONTROL



Gauge Port (Plugged)	ALUMINIUM		SG IRON	
	Model Code	List Price	Model Code	List Price
.25 NPTF	<b>GBQ</b>		<b>GBQ/S</b>	
.25 BSPP	<b>GBQ/M</b>		<b>GBQ/T</b>	

TYPICAL CARTRIDGES USED WITH BODIES SHOWN ABOVE			
	Fully Adjustable Needle Valve		Fixed Orifice, Pressure-Compensated Flow Control
	NFCC Page 5.12		FXCA Page 5.20
	Fully Adjustable Needle Valve with Reverse Free Flow Check		Fixed Orifice, Pressure-Compensated Flow Control with Reverse Free Flow Check
	NCCB Page 5.16		FCCB Page 5.22
	Fully Adjustable Needle Valve with Reverse Free Flow Check, Low Flow		Fully Adjustable, Pressure-Compensated Flow Control with Reverse Free Flow Check
	NCCC Page 5.18		FDBA Page 5.24
OTHER VALVES:	CNCC		

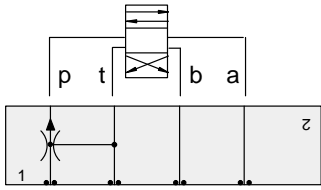


# ISO 03 SANDWICH BODIES



- Aluminium rated to 210 bar and SG Iron rated to 350 bar.
- See page viii for ordering cartridge/body and seals. Pressure ratings, material specifications on page xiv.

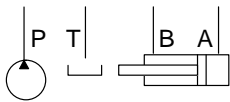
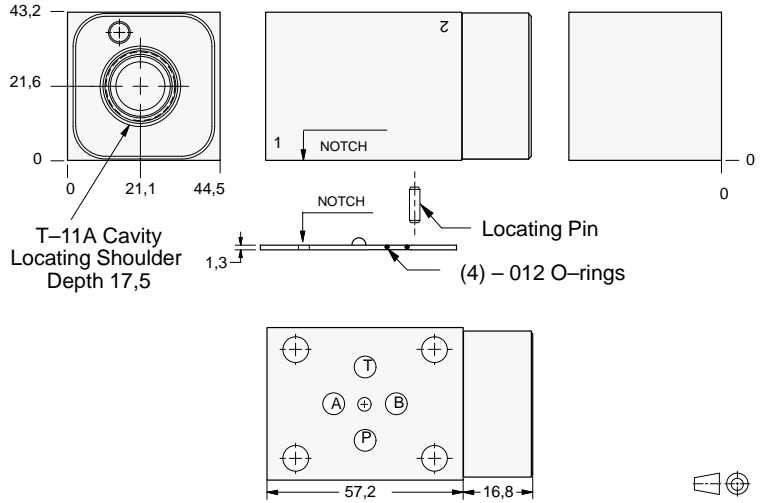
03 FLOW CONTROL



### FUNCTION

Priority Flow on P

### Flow Control Valves



ALUMINIUM		SG IRON	
Model Code	List Price	Model Code	List Price
<b>WBN</b>		<b>WBN/S</b>	

### TYPICAL CARTRIDGES USED WITH BODIES SHOWN ABOVE

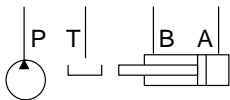
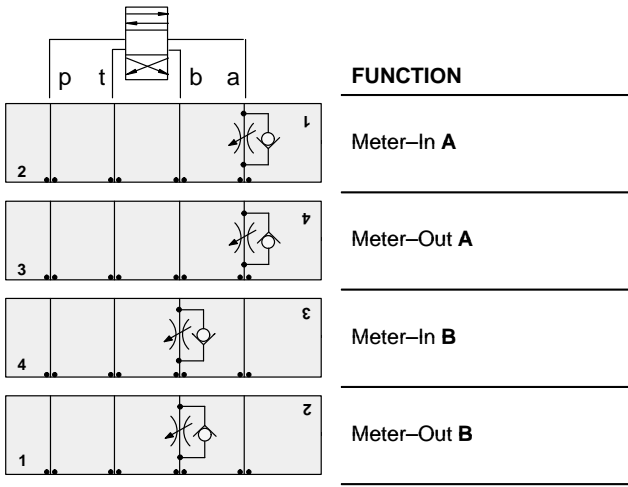
	Priority Flow Control, Bypass/Restrictive, Fixed Orifice		
	FRCA Page 6.02		
<b>OTHER VALVES:</b>			



# ISO 03 SANDWICH BODIES

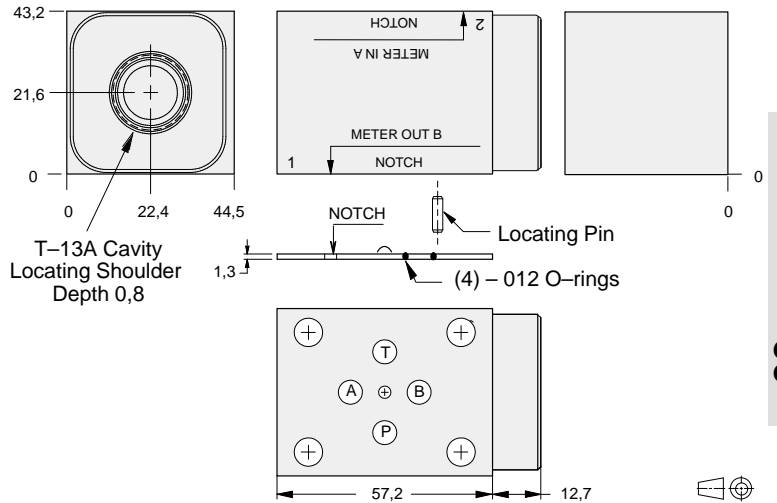


- Aluminium rated to 210 bar and SG Iron rated to 350 bar.
- See page viii for ordering cartridge/body and seals. Pressure ratings, material specifications on page xiv.

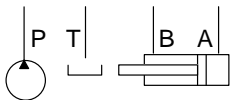
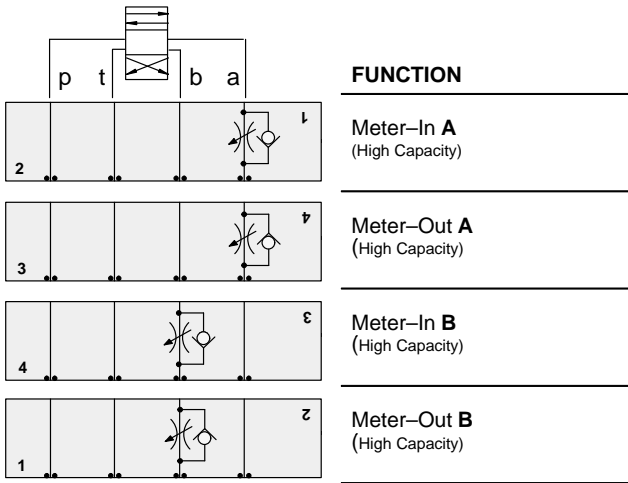


FUNCTION	
Meter-In A	2
Meter-Out A	3
Meter-In B	4
Meter-Out B	1

## Flow Control Valves

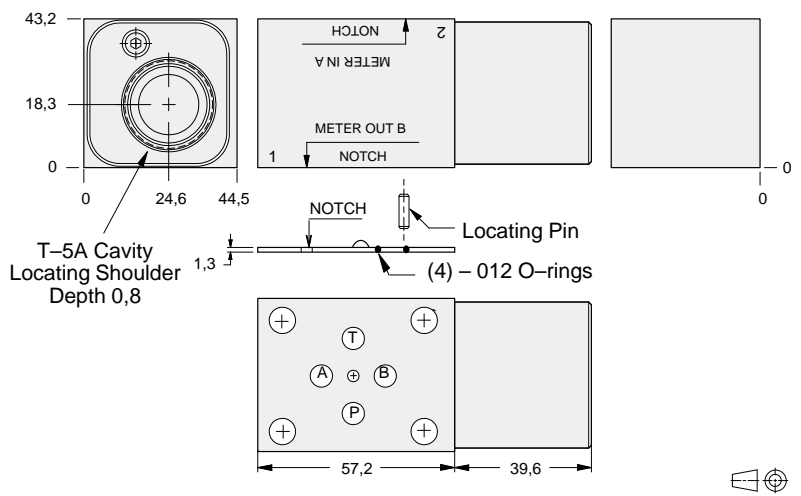


ALUMINIUM		SG IRON	
Model Code	List Price	Model Code	List Price
<b>GBA</b>		<b>GBA/S</b>	



FUNCTION	
Meter-In A (High Capacity)	2
Meter-Out A (High Capacity)	3
Meter-In B (High Capacity)	4
Meter-Out B (High Capacity)	1

## Flow Control Valves



ALUMINIUM		SG IRON	
Model Code	List Price	Part Number	List Price
<b>GBD</b>		<b>GBD/S</b>	

### TYPICAL CARTRIDGES USED WITH BODIES SHOWN ABOVE

	Fully Adjustable Needle Valve		Fixed Orifice, Pressure-Compensated Flow Control
	NF*C Page 5.12		FX*A Page 5.20
	Fully Adjustable Needle Valve with Reverse Free Flow Check		Fixed Orifice, Pressure-Compensated Flow Control with Reverse Free Flow Check
	NC*B Page 5.16		FC*B Page 5.22
	Fully Adjustable Needle Valve with Reverse Free Flow Check, Low Flow		Fully Adjustable, Pressure-Compensated Flow Control with Reverse Free Flow Check
	NC*C Page 5.18		FDBA, FDCB Page 5.24
OTHER VALVES:	CN*C		

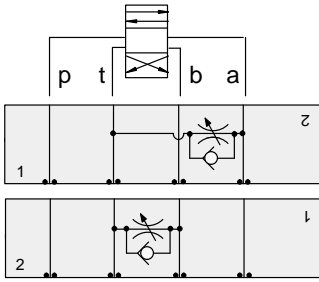


# ISO 03 SANDWICH BODIES



- Aluminium rated to 210 bar and SG Iron rated to 350 bar.
- See page viii for ordering cartridge/body and seals. Pressure ratings, material specifications on page xiv.

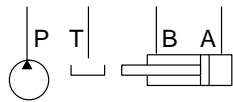
03 FLOW CONTROL



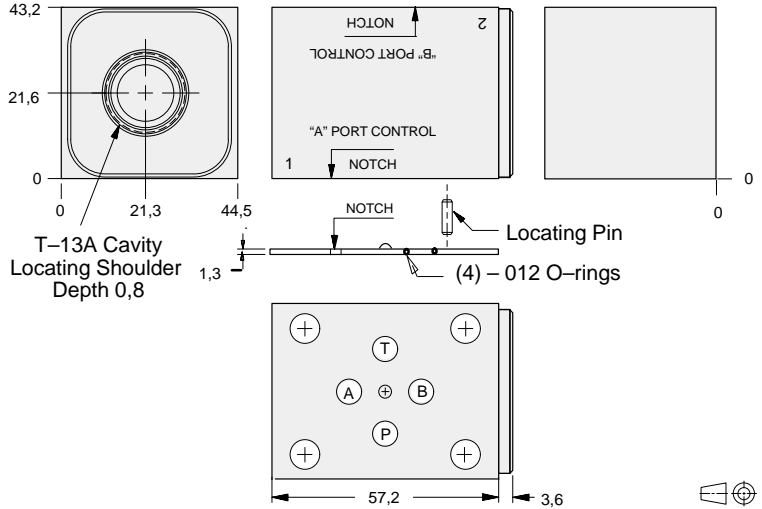
### FUNCTION

Bleed-Off  
A to T

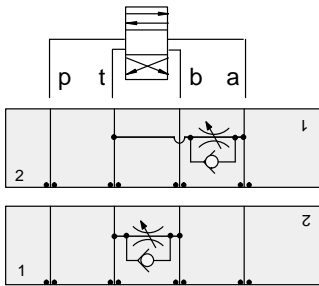
Bleed-Off  
B to T



### Flow Control Valves



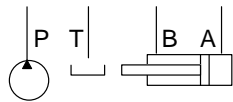
ALUMINIUM		SG IRON	
Model Code	List Price	Model Code	List Price
<b>GBW</b>		<b>GBW/S</b>	



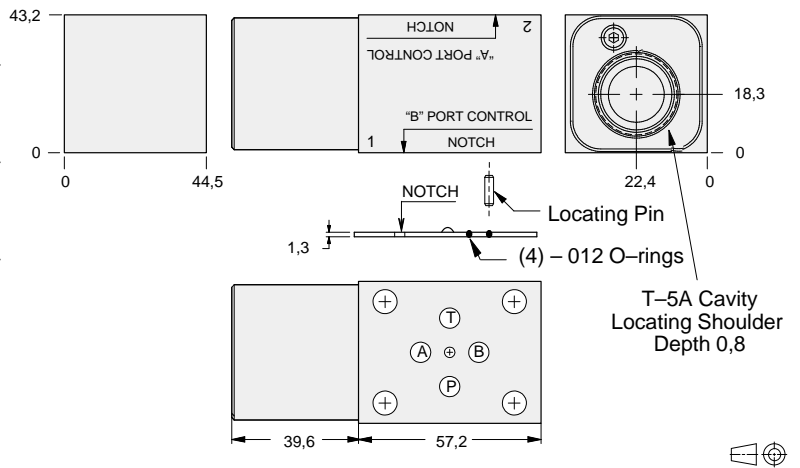
### FUNCTION

Bleed-Off  
A to T  
(High Capacity)

Bleed-Off  
B to T  
(High Capacity)



### Flow Control Valves



ALUMINIUM		SG IRON	
Model Code	List Price	Part Number	List Price
<b>GBE</b>		<b>GBE/S</b>	

### TYPICAL CARTRIDGES USED WITH BODIES SHOWN ABOVE

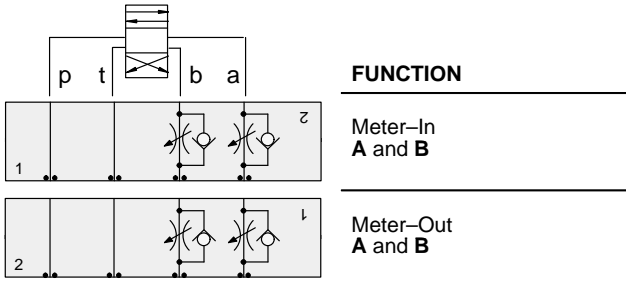
	Fully Adjustable Needle Valve		Fixed Orifice, Pressure-Compensated Flow Control
	NF*C Page 5.12		FX*A Page 5.20
	Fully Adjustable Needle Valve with Reverse Free Flow Check		Fixed Orifice, Pressure-Compensated Flow Control with Reverse Free Flow Check
	NC*B Page 5.16		FC*B Page 5.22
	Fully Adjustable Needle Valve with Reverse Free Flow Check, Low Flow		Fully Adjustable, Pressure-Compensated Flow Control with Reverse Free Flow Check
	NC*C Page 5.18		FDBA, FDCB Page 5.24
OTHER VALVES: CNCC, CNEC			



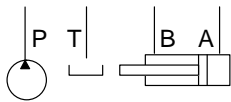
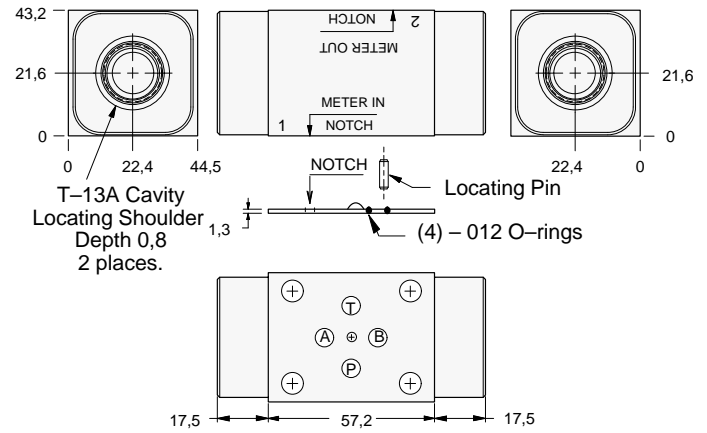
# ISO 03 SANDWICH BODIES



- Aluminium rated to 210 bar and SG Iron rated to 350 bar.
- See page viii for ordering cartridge/body and seals. Pressure ratings, material specifications on page xiv.

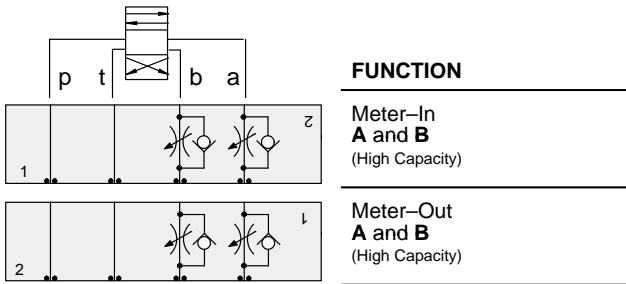


## Flow Control Valves

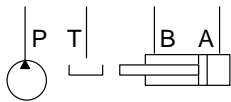
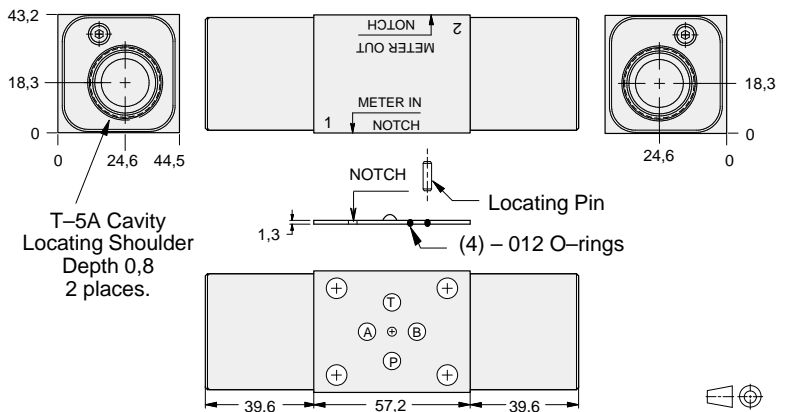


ALUMINIUM		SG IRON	
Model Code	List Price	Model Code	List Price
<b>GBY</b>		<b>GBY/S</b>	

03 FLOW CONTROL



## Flow Control Valves



ALUMINIUM		SG IRON	
Model Code	List Price	Part Number	List Price
<b>GBZ</b>		<b>GBZ/S</b>	

### TYPICAL CARTRIDGES USED WITH BODIES SHOWN ABOVE

	Fully Adjustable Needle Valve		Fixed Orifice, Pressure-Compensated Flow Control
	<b>NF*C Page 5.12</b>		<b>FX*A Page 5.20</b>
	Fully Adjustable Needle Valve with Reverse Free Flow Check		Fixed Orifice, Pressure-Compensated Flow Control with Reverse Free Flow Check
	<b>NC*B Page 5.16</b>		<b>FC*B Page 5.22</b>
	Fully Adjustable Needle Valve with Reverse Free Flow Check, Low Flow		Fully Adjustable, Pressure-Compensated Flow Control with Reverse Free Flow Check
	<b>NC*C Page 5.18</b>		<b>FDBA, FDCB Page 5.24</b>
<b>OTHER VALVES:</b>	<b>CNCC, CNEC</b>		

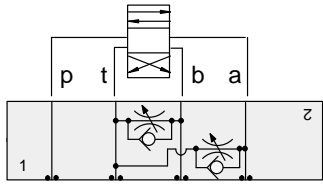


# ISO 03 SANDWICH BODIES



- Aluminium rated to 210 bar and SG Iron rated to 350 bar.
- See page viii for ordering cartridge/body and seals. Pressure ratings, material specifications on page xiv.

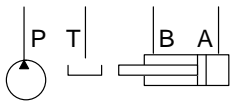
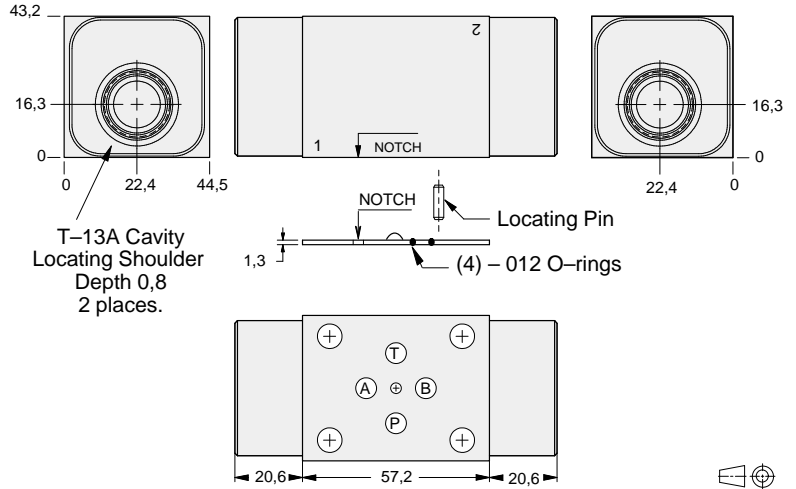
03 FLOW CONTROL



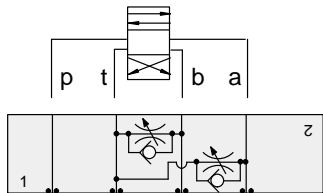
### FUNCTION

Bleed-Off  
A and B to T

### Flow Control Valves



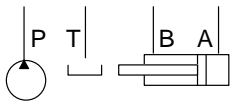
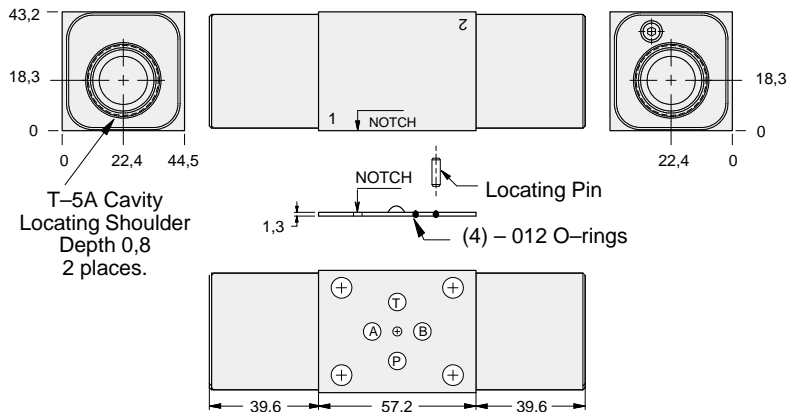
ALUMINIUM		SG IRON	
Model Code	List Price	Model Code	List Price
<b>GBX</b>		<b>GBX/S</b>	



### FUNCTION

Bleed-Off  
A and B to T  
(High Capacity)

### Flow Control Valves



ALUMINIUM		SG IRON	
Model Code	List Price	Part Number	List Price
<b>GBF</b>		<b>GBF/S</b>	

### TYPICAL CARTRIDGES USED WITH BODIES SHOWN ABOVE

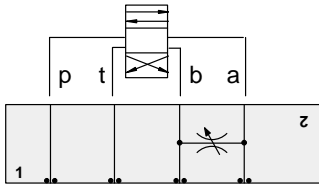
	Fully Adjustable Needle Valve		Fixed Orifice, Pressure-Compensated Flow Control
	<b>NF*C Page 5.12</b>		<b>FX*A Page 5.20</b>
	Fully Adjustable Needle Valve with Reverse Free Flow Check		Fixed Orifice, Pressure-Compensated Flow Control with Reverse Free Flow Check
	<b>NC*B Page 5.15</b>		<b>FC*B Page 5.22</b>
	Fully Adjustable Needle Valve with Reverse Free Flow Check, Low Flow		Fully Adjustable, Pressure-Compensated Flow Control with Reverse Free Flow Check
	<b>NC*C Page 5.18</b>		<b>FDBA, FDCB Page 5.24</b>
<b>OTHER VALVES:</b>	<b>CNCC, CNEC</b>		



# ISO 03 SANDWICH BODIES



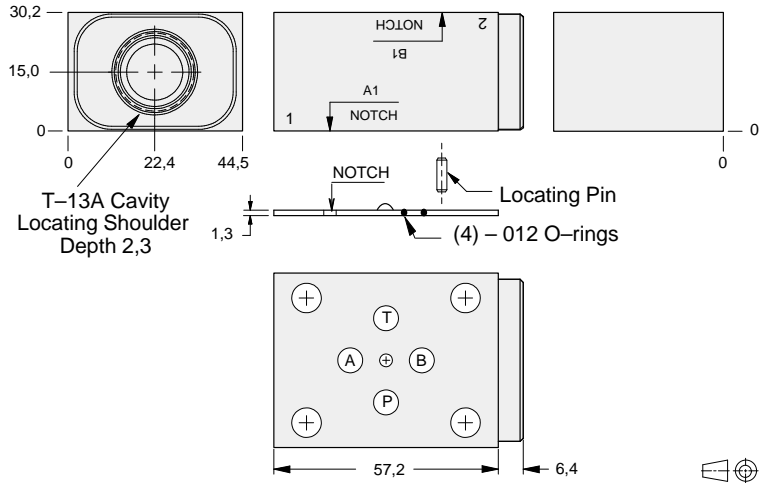
- Aluminium rated to 210 bar and SG Iron rated to 350 bar.
- See page viii for ordering cartridge/body and seals. Pressure ratings, material specifications on page xiv.



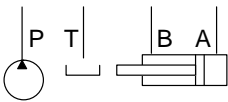
### FUNCTION

Bleed-Off  
A to B and  
B to A

### Flow Control Valves



03 FLOW CONTROL



ALUMINIUM		SG IRON	
Model Code	List Price	Model Code	List Price
<b>GBS</b>		<b>GBS/S</b>	

TYPICAL CARTRIDGES USED WITH BODIES SHOWN ABOVE			
	Fully Adjustable Needle Valve		
	NFCC Page 5.12		
OTHER VALVES:			