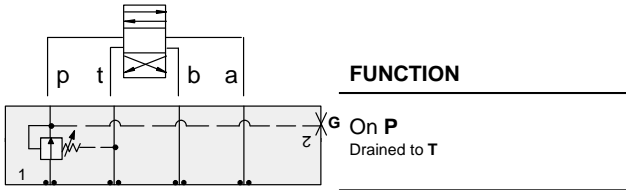




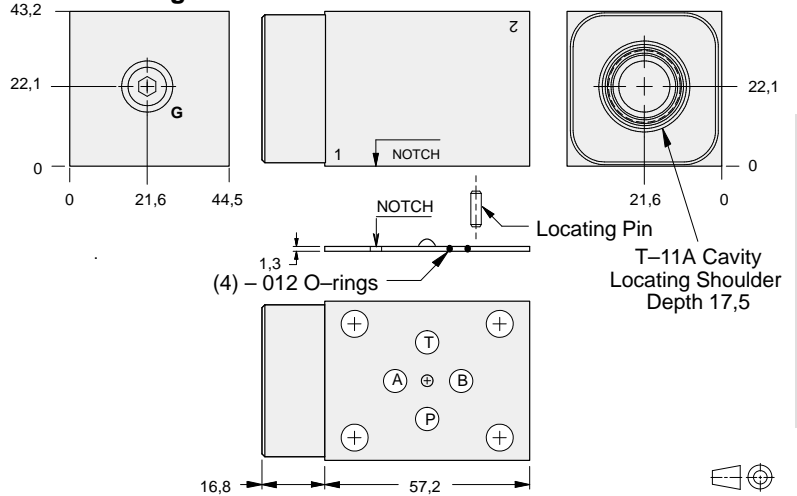
# ISO 03 SANDWICH BODIES



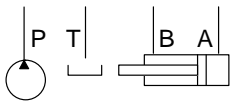
- Aluminium rated to 210 bar and SG Iron rated to 350 bar.
- See page viii for ordering cartridge/body and seals. Pressure ratings, material specifications on page xiv.



## Reducing Valves



03 REDUCING



Gauge Port (Plugged)	ALUMINIUM		SG IRON	
	Model Code	List Price	Model Code	List Price
.25 NPTF	<b>EBP</b>		<b>EBP/S</b>	
.25 BSPP	<b>EBP/M</b>		<b>EBP/T</b>	

TYPICAL CARTRIDGES USED WITH BODIES SHOWN ABOVE			
	Pilot Operated Reducing Valve		
	PBDB Page 3.06		
<b>OTHER VALVES:</b>			

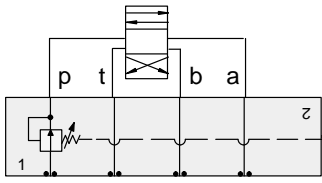


# ISO 03 SANDWICH BODIES



- Aluminium rated to 210 bar and SG Iron rated to 350 bar.
- See page viii for ordering cartridge/body and seals. Pressure ratings, material specifications on page xiv.

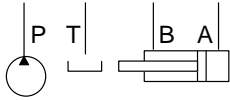
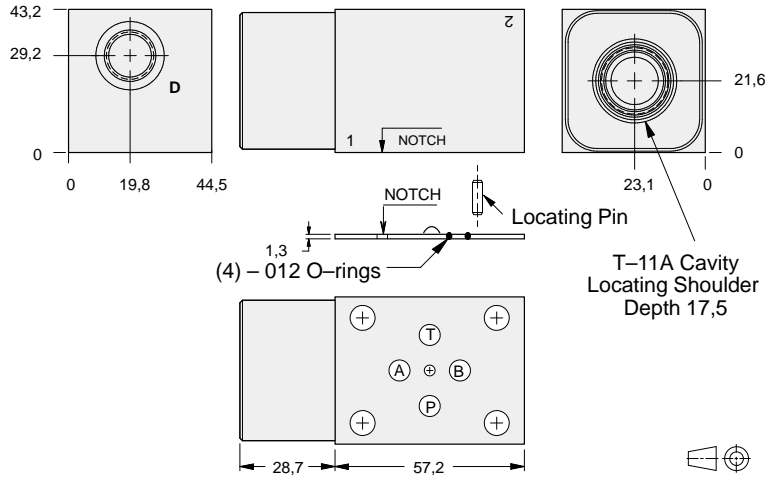
03 REDUCING



### FUNCTION

On P  
Drained Externally

### Reducing Valves



Drain Port	ALUMINIUM		SG IRON	
	Model Code	List Price	Model Code	List Price
SAE-6	EBQ		EBQ/S	
.25 BSPP	EBQ/M		EBQ/T	

### TYPICAL CARTRIDGES USED WITH BODIES SHOWN ABOVE

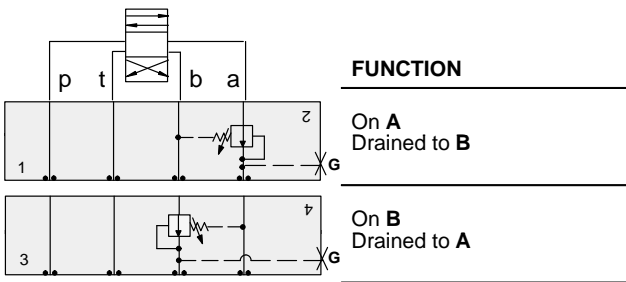
Cartridge Diagram	Cartridge Name	Reference
	Pilot Operated Reducing Valve	PBDB Page 3.06
OTHER VALVES:		



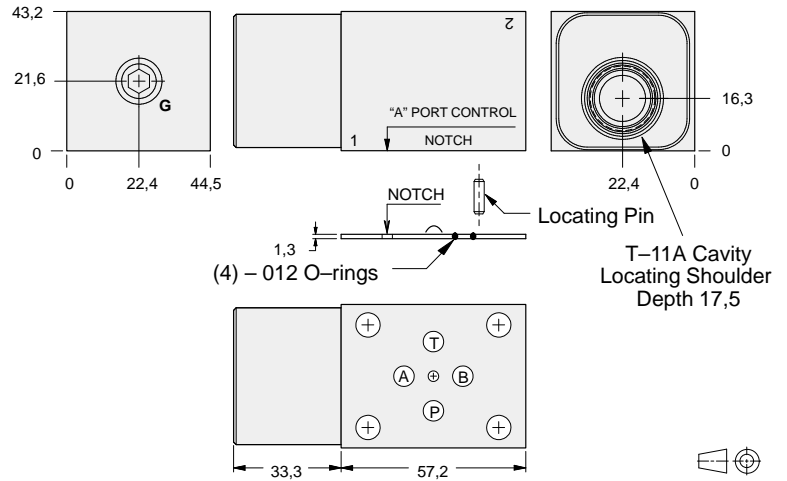
# ISO 03 SANDWICH BODIES



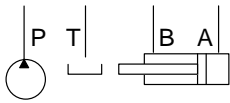
- Aluminium rated to 210 bar and SG Iron rated to 350 bar.
- See page viii for ordering cartridge/body and seals. Pressure ratings, material specifications on page xiv.



## Reducing Valves



03 REDUCING



Gauge Port (Plugged)	ALUMINIUM		SG IRON	
	Model Code	List Price	Model Code	List Price
.25 NPTF	<b>EBA</b>		<b>EBA/S</b>	
.25 BSPP	<b>EBA/M</b>		<b>EBA/T</b>	

TYPICAL CARTRIDGES USED WITH BODIES SHOWN ABOVE			
	Pilot Operated Reducing Valve		
	PBDB Page 3.06		
OTHER VALVES:			

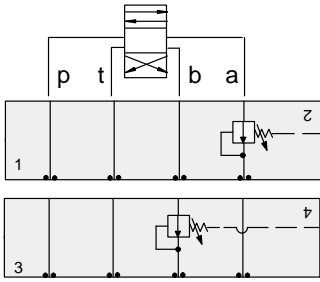


# ISO 03 SANDWICH BODIES



- Aluminium rated to 210 bar and SG Iron rated to 350 bar.
- See page viii for ordering cartridge/body and seals. Pressure ratings, material specifications on page xiv.

03 REDUCING



**FUNCTION**

---

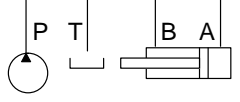
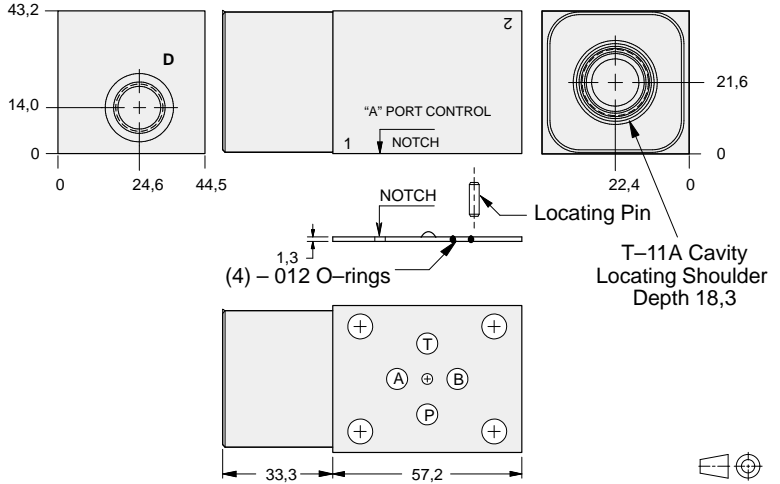
**On A**  
Drained Externally

---

**On B**  
Drained Externally

---

## Reducing Valves



Drain Port	ALUMINIUM		SG IRON	
	Model Code	List Price	Model Code	List Price
SAE-6	<b>EBD</b>		<b>EBD/S</b>	
.25 BSPP	<b>EBD/M</b>		<b>EBD/T</b>	

### TYPICAL CARTRIDGES USED WITH BODIES SHOWN ABOVE

Cartridge Diagram	Cartridge Name	Page Reference
	Pilot Operated Reducing Valve	PBDB Page 3.06
OTHER VALVES:		

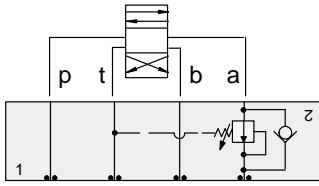


# ISO 03 SANDWICH BODIES



- Aluminium rated to 210 bar and SG Iron rated to 350 bar.
- See page viii for ordering cartridge/body and seals. Pressure ratings, material specifications on page xiv.

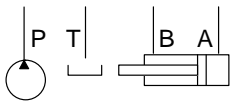
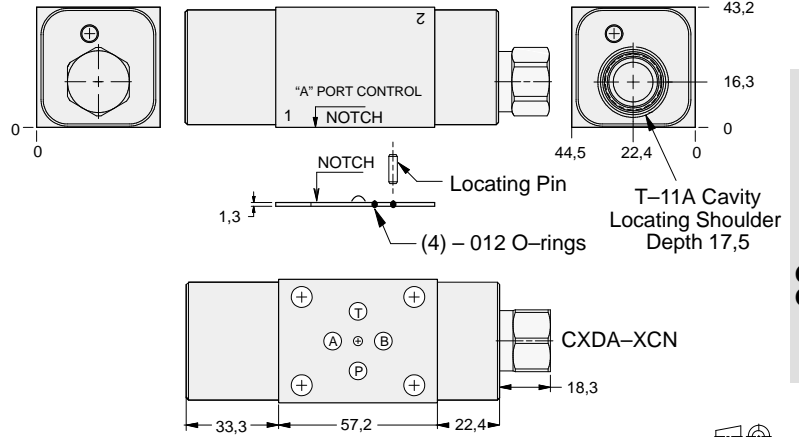
03 REDUCING



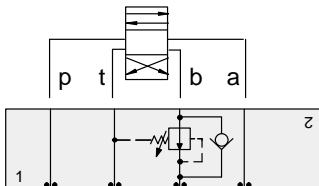
### FUNCTION

On A Drain to T  
Reverse FF Check

### Reducing Valves



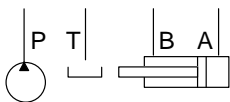
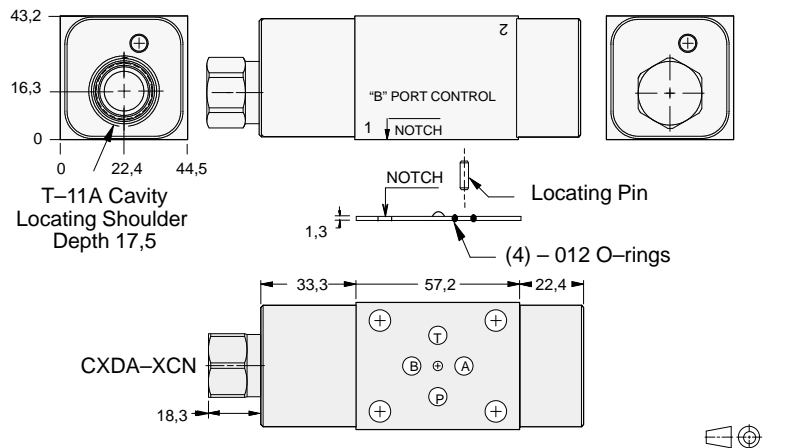
ALUMINIUM		SG IRON	
Model Code	List Price	Model Code	List Price
EB2		EB2/S	



### FUNCTION

On B Drain to T  
Reverse FF Check

### Reducing Valves



ALUMINIUM		SG IRON	
Model Code	List Price	Part Number	List Price
EB3		EB3/S	

### TYPICAL CARTRIDGES USED WITH BODIES SHOWN ABOVE

	Pilot Operated Reducing Valve		
	PBDB Page 3.06		
OTHER VALVES:			

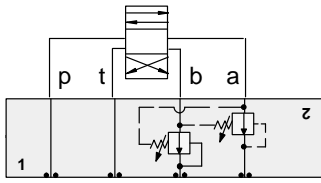


# ISO 03 SANDWICH BODIES



- Aluminium rated to 210 bar and SG Iron rated to 350 bar.
- See page viii for ordering cartridge/body and seals. Pressure ratings, material specifications on page xiv.

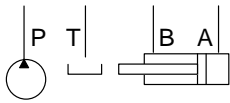
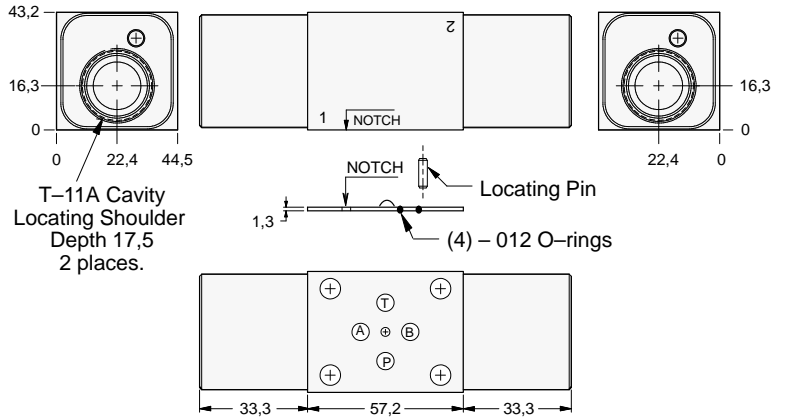
03 REDUCING



### FUNCTION

On A and B  
Drains to Opposite Port

### Reducing Valves



ALUMINIUM		SG IRON	
Model Code	List Price	Model Code	List Price
EBY		EBY/S	

### TYPICAL CARTRIDGES USED WITH BODIES SHOWN ABOVE

	Pilot Operated Reducing Valve		
	PBDB Page 3.06		
OTHER VALVES:			