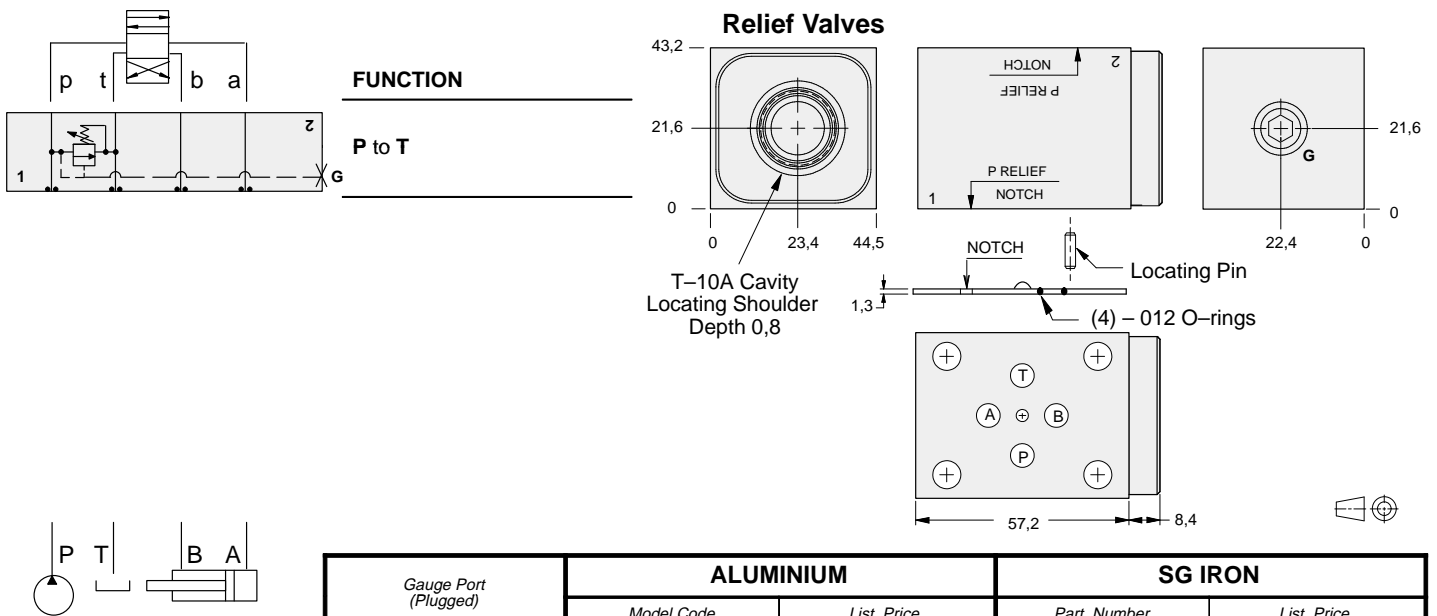




# ISO 03 SANDWICH BODIES



- Aluminium rated to 210 bar and SG Iron rated to 350 bar.
- See page viii for ordering cartridge/body and seals. Pressure ratings, material specifications on page xiv.



Gauge Port (Plugged)	ALUMINIUM		SG IRON	
	Model Code	List Price	Part Number	List Price
.25 NPTF	<b>FBP</b>		<b>FBP/S</b>	
.25 BSPP	<b>FBP/M</b>		<b>FBP/T</b>	

TYPICAL CARTRIDGES USED WITH BODIES SHOWN ABOVE			
	Pilot Operated Relief Valve		Pilot Operated "Kick-Down" Relief Valve
	RPEC Page 1.06		RQEB Page 1.12
	Pilot Operated, Rapid Response Relief Valve		
	RPEE Page 1.08		
	Direct Acting Relief Valve		
	RDDA Page 1.10		
OTHER VALVES:			

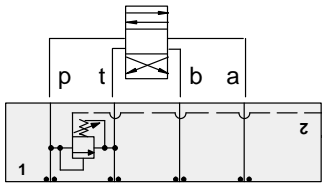


# ISO 03 SANDWICH BODIES



- Aluminium rated to 210 bar and SG Iron rated to 350 bar.
- See page viii for ordering cartridge/body and seals. Pressure ratings, material specifications on page xiv.

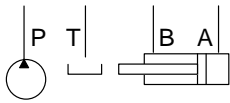
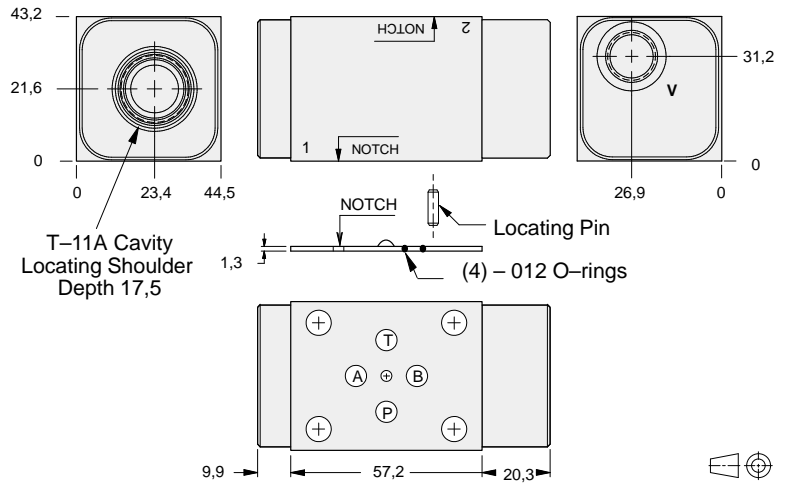
03 RELIEF



### FUNCTION

**P to T**  
Externally Vented

### Relief Valves



Vent Port	ALUMINIUM		SG IRON	
	Model Code	List Price	Model Code	List Price
SAE-6	<b>EBC</b>		<b>EBC/S</b>	
.25 BSPP	<b>EBC/M</b>		<b>EBC/T</b>	

### TYPICAL CARTRIDGES USED WITH BODIES SHOWN ABOVE

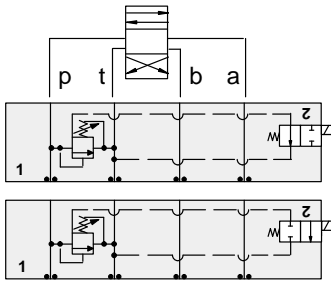
	<i>Pilot Operated Vented Relief Valve</i>		
	<b>RVCA Page 1.18</b>		
<b>OTHER VALVES:</b>			



# ISO 03 SANDWICH BODIES



- Aluminium rated to 210 bar and SG Iron rated to 350 bar.
- See page viii for ordering cartridge/body and seals. Pressure ratings, material specifications on page xiv.

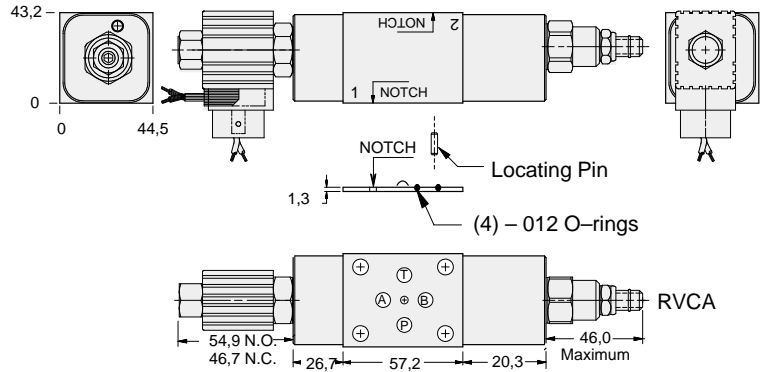


### FUNCTION

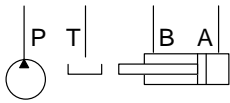
**P to T**  
N.O. Solenoid  
Vented \*

**P to T**  
N.C. Solenoid  
Vented \*

### Relief Valves



Operating pressure is limited to 210 bar.



Solenoid Type	ALUMINIUM		SG IRON	
	Model Code	List Price	Model Code	List Price
N.O.	YRCO-LAN-*A		YRCO-LAN-*A/S	
N.C.	YRCP-LAN-*A		YRCP-LAN-*A/S	

\* Select solenoid connection/voltage option from page 14.16 and add option price to List Price.

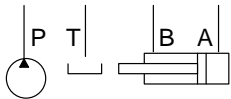
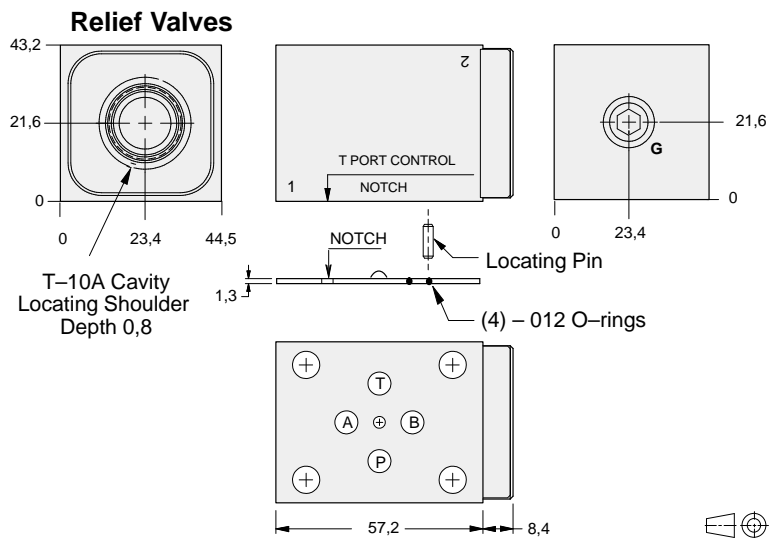
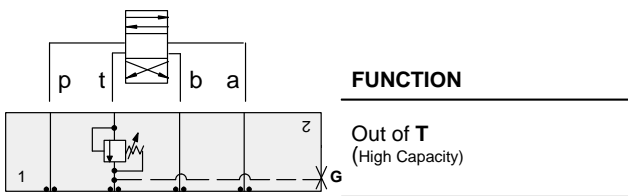


# ISO 03 SANDWICH BODIES



- Aluminium rated to 210 bar and SG Iron rated to 350 bar.
- See page viii for ordering cartridge/body and seals. Pressure ratings, material specifications on page xiv.

03 RELIEF



Gauge Port (Plugged)	ALUMINIUM		SG IRON	
	Model Code	List Price	Part Number	List Price
.25 NPTF	<b>FBT</b>		<b>FBT/S</b>	
.25 BSPP	<b>FBT/M</b>		<b>FBT/T</b>	

### TYPICAL CARTRIDGES USED WITH BODIES SHOWN ABOVE

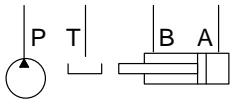
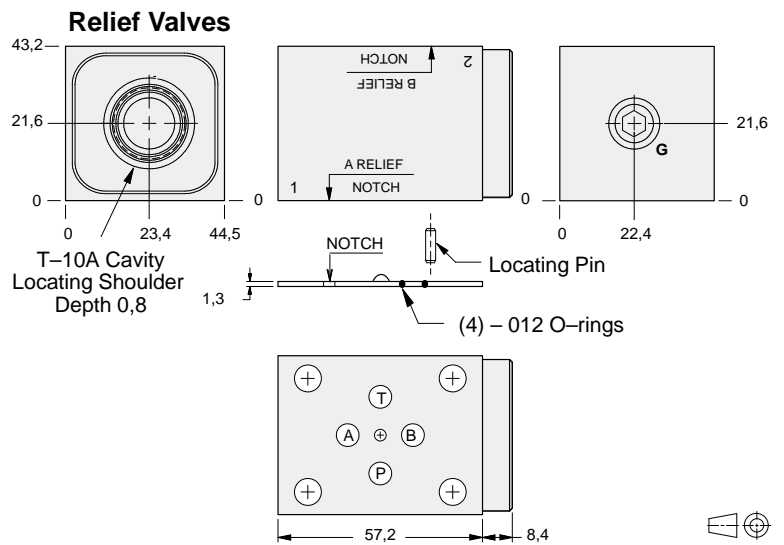
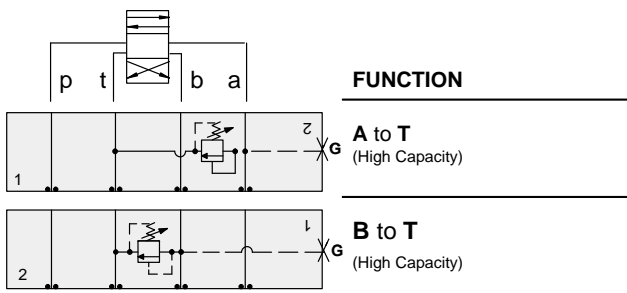
	<i>Pilot Operated Relief Valve</i>		<i>Pilot Operated "Kick-Down" Relief Valve</i>
	<b>RPEC Page 1.06</b>		<b>RQEB Page 1.12</b>
	<i>Pilot Operated, Rapid Response Relief Valve</i>		
	<b>RPEE Page 1.08</b>		
	<i>Direct Acting Relief Valve</i>		
	<b>RDDA Page 1.10</b>		
<b>OTHER VALVES:</b>			



# ISO 03 SANDWICH BODIES



- Aluminium rated to 210 bar and SG Iron rated to 350 bar.
- See page viii for ordering cartridge/body and seals. Pressure ratings, material specifications on page xiv.



Gauge Port (Plugged)	ALUMINIUM		SG IRON	
	Model Code	List Price	Part Number	List Price
.25 NPTF	<b>FBA</b>		<b>FBA/S</b>	
.25 BSPP	<b>FBA/M</b>		<b>FBA/T</b>	

TYPICAL CARTRIDGES USED WITH BODIES SHOWN ABOVE			
	Pilot Operated Relief Valve		Pilot Operated "Kick-Down" Relief Valve
	RPEC Page 1.06		RQEB Page 1.12
	Pilot Operated, Rapid Response Relief Valve		
	RPEE Page 1.08		
	Direct Acting Relief Valve		
	RDDA Page 1.10		
OTHER VALVES:			

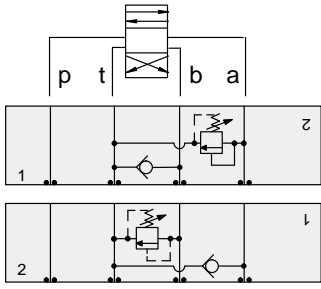


# ISO 03 SANDWICH BODIES



- Aluminium rated to 210 bar and SG Iron rated to 350 bar.
- See page viii for ordering cartridge/body and seals. Pressure ratings, material specifications on page xiv.

03 RELIEF

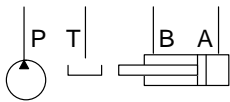
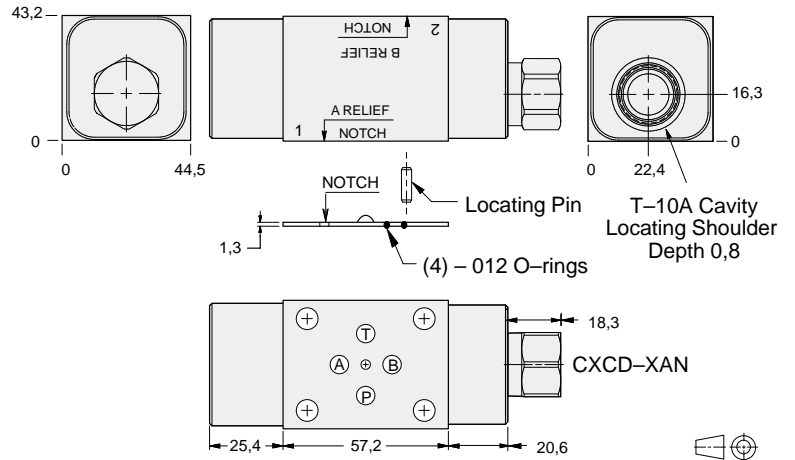


### FUNCTION

**A to T**  
FF Check T to B

**B to T**  
FF Check T to A

### Relief Valves



ALUMINIUM		SG IRON	
Model Code	List Price	Model Code	List Price
<b>FB2</b>		<b>FB2/S</b>	

### TYPICAL CARTRIDGES USED WITH BODIES SHOWN ABOVE

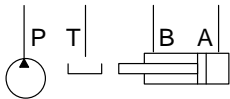
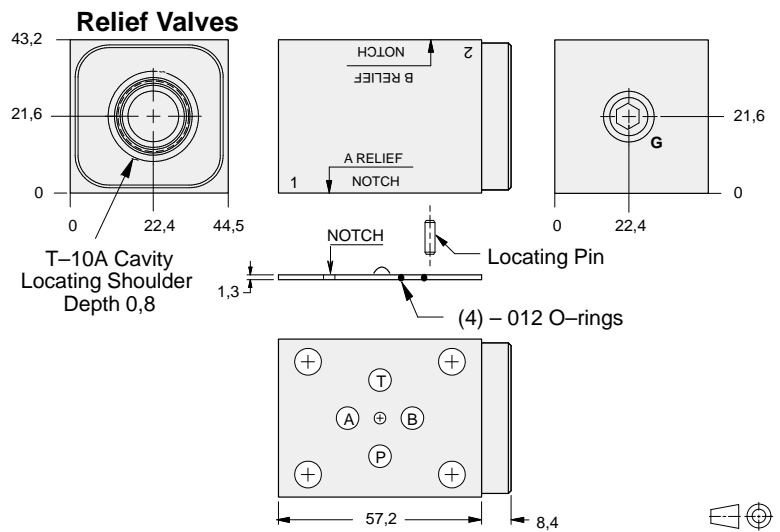
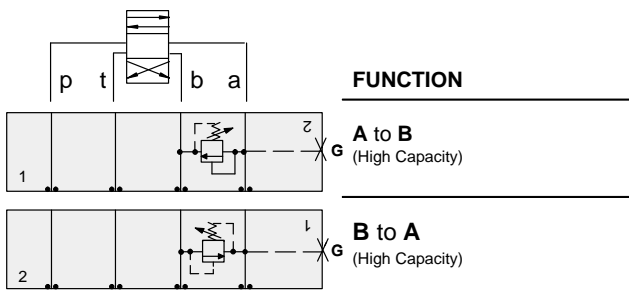
	<i>Pilot Operated Relief Valve</i>		<i>Pilot Operated "Kick-Down" Relief Valve</i>
	<b>RPEC Page 1.06</b>		<b>RQEB Page 1.12</b>
	<i>Pilot Operated, Rapid Response Relief Valve</i>		
	<b>RPEE Page 1.08</b>		
	<i>Direct Acting Relief Valve</i>		
	<b>RDDA Page 1.10</b>		
<b>OTHER VALVES:</b>			



# ISO 03 SANDWICH BODIES



- Aluminium rated to 210 bar and SG Iron rated to 350 bar.
- See page viii for ordering cartridge/body and seals. Pressure ratings, material specifications on page xiv.



Gauge Port (Plugged)	ALUMINIUM		SG IRON	
	Model Code	List Price	Part Number	List Price
.25 NPTF	<b>FBC</b>		<b>FBC/S</b>	
.25 BSPP	<b>FBC/M</b>		<b>FBC/T</b>	

TYPICAL CARTRIDGES USED WITH BODIES SHOWN ABOVE			
	<i>Pilot Operated Relief Valve</i>		<i>Pilot Operated "Kick-Down" Relief Valve</i>
	<b>RPEC Page 1.06</b>		<b>RQEB Page 1.12</b>
	<i>Pilot Operated, Rapid Response Relief Valve</i>		
	<b>RPEE Page 1.08</b>		
	<i>Direct Acting Relief Valve</i>		
	<b>RDDA Page 1.10</b>		
<b>OTHER VALVES:</b>			

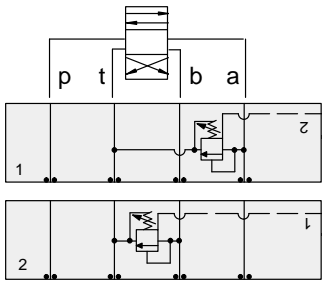


# ISO 03 SANDWICH BODIES



- Aluminium rated to 210 bar and SG Iron rated to 350 bar.
- See page viii for ordering cartridge/body and seals. Pressure ratings, material specifications on page xiv.

03 RELIEF

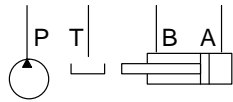
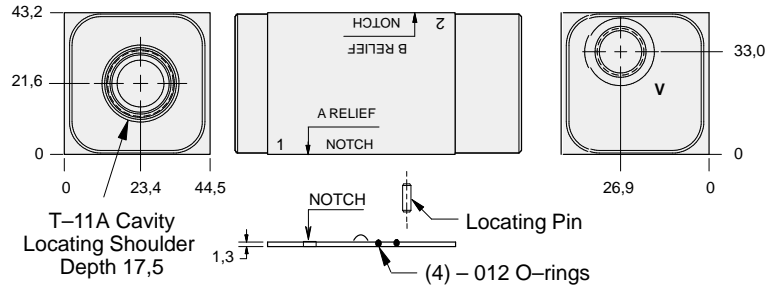


### FUNCTION

**A to T**  
Externally Vented

**B to T**  
Externally Vented

### Relief Valves



Vent Port	ALUMINIUM		SG IRON	
	Model Code	List Price	Model Code	List Price
SAE-6	<b>EBI</b>		<b>EBI/S</b>	
.25 BSPP	<b>EBI/M</b>		<b>EBI/T</b>	

### TYPICAL CARTRIDGES USED WITH BODIES SHOWN ABOVE

	<i>Pilot Operated Vented Relief Valve</i>		
	<b>RVCA Page 1.18</b>		
<b>OTHER VALVES:</b>			

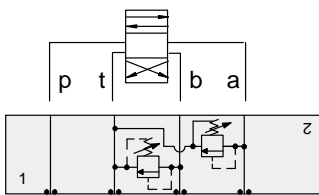




# ISO 03 SANDWICH BODIES



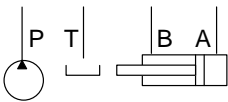
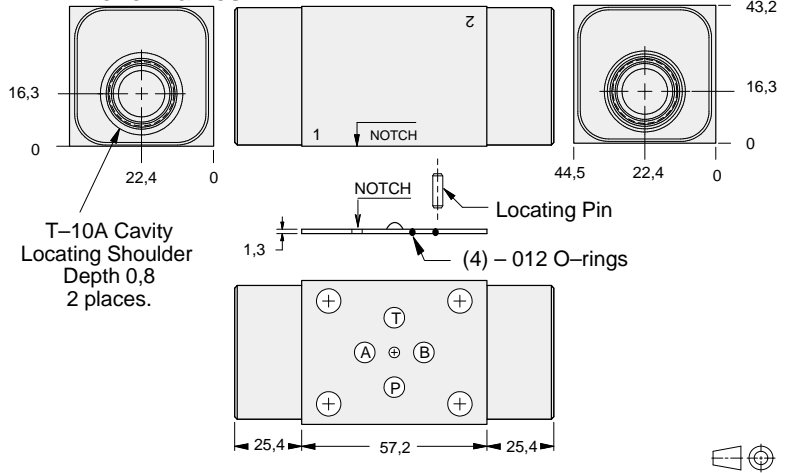
- Aluminium rated to 210 bar and SG Iron rated to 350 bar.
- See page viii for ordering cartridge/body and seals. Pressure ratings, material specifications on page xiv.



### FUNCTION

**A and B to T**  
(High Capacity)

### Relief Valves



ALUMINIUM		SG IRON	
Model Code	List Price	Part Number	List Price
<b>FBX</b>		<b>FBX/S</b>	

### TYPICAL CARTRIDGES USED WITH BODIES SHOWN ABOVE

	<i>Pilot Operated Relief Valve</i>		<i>Pilot Operated "Kick-Down" Relief Valve</i>
	<b>RPEC Page 1.06</b>		<b>RQEB Page 1.12</b>
	<i>Pilot Operated, Rapid Response Relief Valve</i>		
	<b>RPEE Page 1.08</b>		
	<i>Direct Acting Relief Valve</i>		
	<b>RDDA Page 1.10</b>		
<b>OTHER VALVES:</b>			

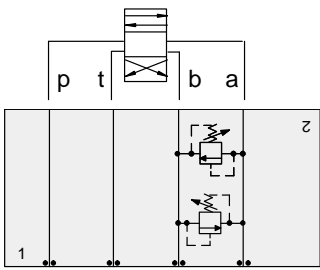


# ISO 03 SANDWICH BODIES



- Aluminium rated to 210 bar and SG Iron rated to 350 bar.
- See page viii for ordering cartridge/body and seals. Pressure ratings, material specifications on page xiv.

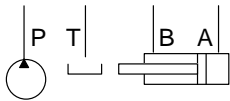
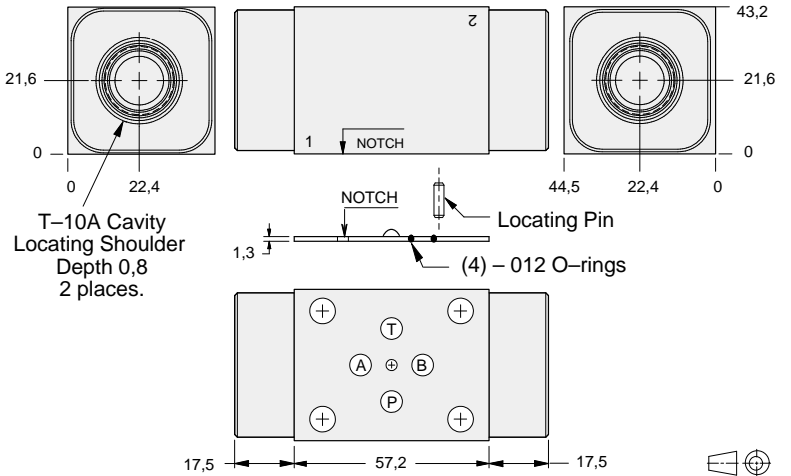
03 RELIEF



### FUNCTION

**A to B and B to A**  
(High Capacity)  
(Cross Port)

### Relief Valves



ALUMINIUM		SG IRON	
Model Code	List Price	Part Number	List Price
FBY		FBY/S	

### TYPICAL CARTRIDGES USED WITH BODIES SHOWN ABOVE

	Pilot Operated Relief Valve		Pilot Operated "Kick-Down" Relief Valve
	RPEC Page 1.06		RQEB Page 1.12
	Pilot Operated, Rapid Response Relief Valve		
	RPEE Page 1.08		
	Direct Acting Relief Valve		
	RDDA Page 1.10		
OTHER VALVES:			