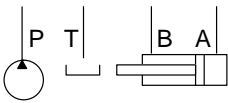
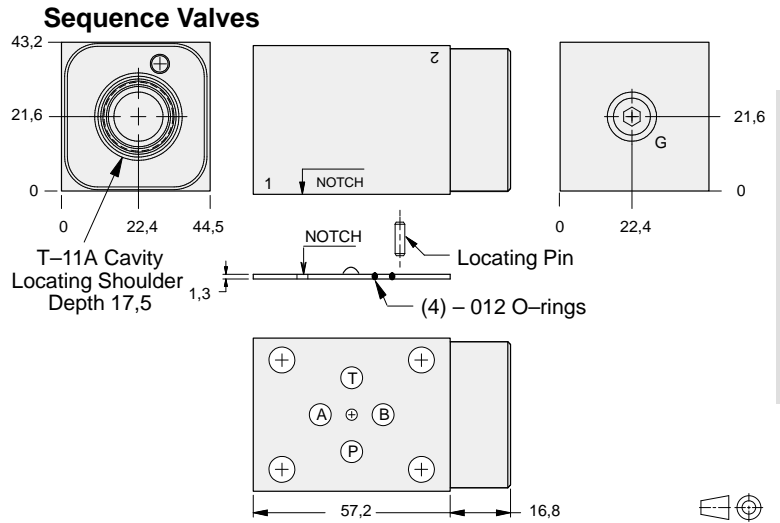
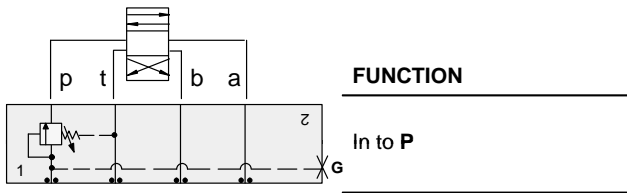




ISO 03 SANDWICH BODIES



- Aluminium rated to 210 bar and SG Iron rated to 350 bar.
- See page viii for ordering cartridge/body and seals. Pressure ratings, material specifications on page xiv.



| Gauge Port (Plugged) | ALUMINIUM | | SG IRON | |
|-------------------------|--------------|------------|--------------|------------|
| | Model Code | List Price | Model Code | List Price |
| .25 NPTF | EBW | | EBW/S | |
| .25 BSPP | EBW/M | | EBW/T | |

03 SEQUENCE

| TYPICAL CARTRIDGES USED WITH BODIES SHOWN ABOVE | | | |
|---|--|--|--|
| | <i>Pilot Operated Sequence Valve</i> | | |
| | RSDC Page 2.06 | | |
| | <i>Pilot Operated "Kick-Down" Sequence Valve</i> | | |
| | SQDB Page 2.08 | | |
| | <i>Direct Acting Sequence Valve with Reverse Free Flow Check</i> | | |
| | SCCA Page 2.12 | | |
| OTHER VALVES: | | | |



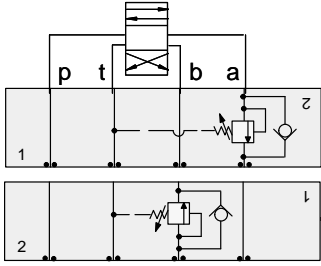
ISO 03 SANDWICH BODIES



- Aluminium rated to 210 bar and SG Iron rated to 350 bar.
- See page viii for ordering cartridge/body and seals. Pressure ratings, material specifications on page xiv.

03 SEQUENCE

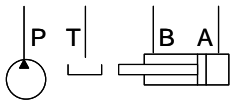
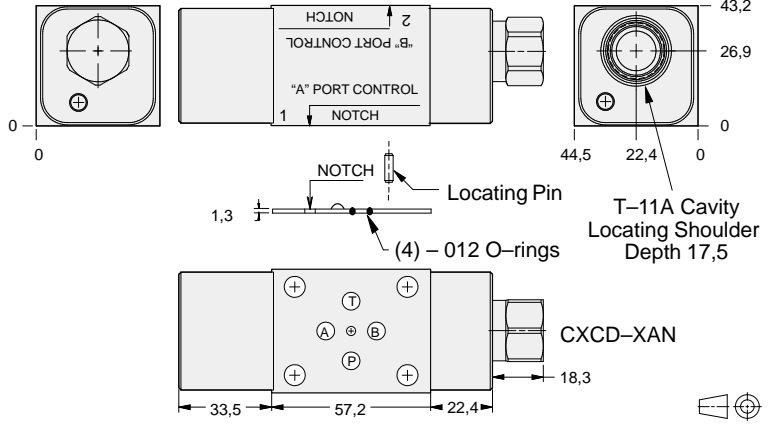
Sequence Valves



FUNCTION

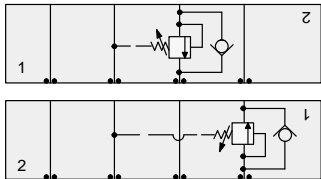
In to A
Reverse FF Check

Out of B
Reverse FF Check



| ALUMINIUM | | SG IRON | |
|------------|------------|--------------|------------|
| Model Code | List Price | Model Code | List Price |
| EB4 | | EB4/S | |

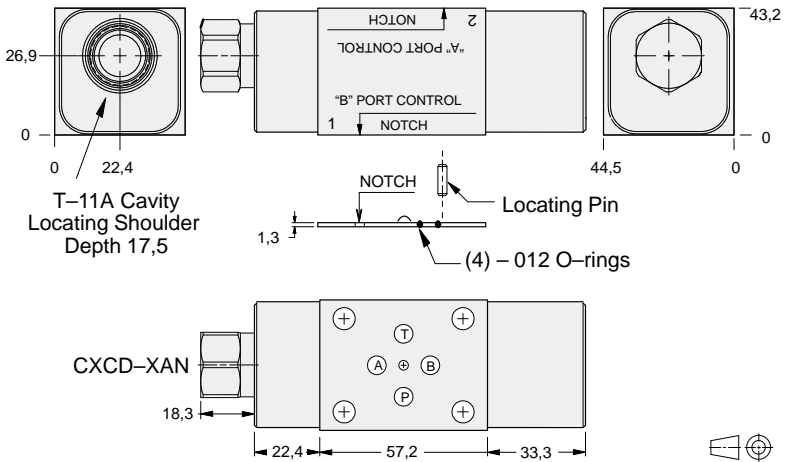
Sequence Valves



FUNCTION

In to B
Reverse FF Check

Out of A
Reverse FF Check



| ALUMINIUM | | SG IRON | |
|------------|------------|--------------|------------|
| Model Code | List Price | Part Number | List Price |
| EB5 | | EB5/S | |

TYPICAL CARTRIDGES USED WITH BODIES SHOWN ABOVE

| | | | |
|----------------------|--|--|--|
| | <i>Pilot Operated Sequence Valve</i> | | |
| | RSDC Page 2.06 | | |
| | <i>Pilot Operated "Kick-Down" Sequence Valve</i> | | |
| | SQDB Page 2.08 | | |
| OTHER VALVES: | | | |