



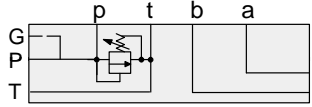
# ISO 03 SANDWICH BODIES



- Aluminium rated to 210 bar and SG Iron rated to 350 bar.
- See page viii for ordering cartridge/body and seals. Pressure ratings, material specifications on page xiv.

03 SUBPLATE

### FUNCTION



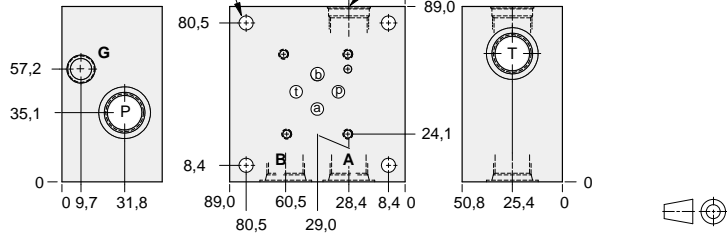
Relief P to T

### Side Ported Subplates

Mounting Holes:  
7,1 diameter through hole.  
4 places.

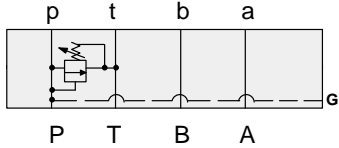
T-10A Cavity  
Locating Shoulder  
Depth 0,8

4 Interface Bolt Holes  
x 9,7 deep  
Inch:10-24 UNC  
Metric: M5 x 0.8



Bolt Hole Interface	Gauge Port	Ports A,B,P,T	ALUMINIUM		SG IRON	
			Model Code	List Price	Model Code	List Price
Inch	.25 NPTF	.375 NPTF	FSB		FSB/S	
Inch	.25 NPTF	SAE-8	FSJ		FSJ/S	
Metric	.25 BSPP	.375 BSPP	FSU		FSU/S	

### FUNCTION



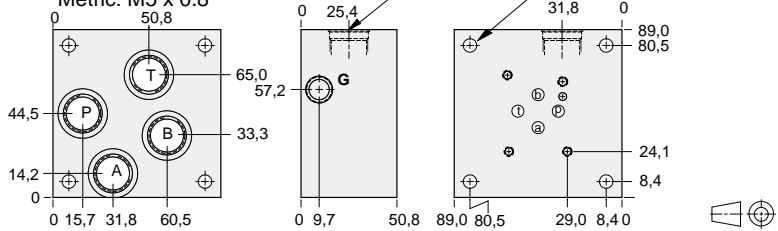
Relief P to T

### Rear Ported Subplates

4 Interface Bolt Holes  
x 9,7 deep  
Inch:10-24 UNC  
Metric: M5 x 0.8

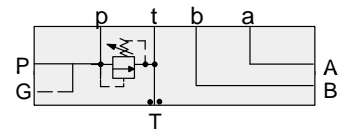
T-10A Cavity  
Locating Shoulder  
Depth 0,8

Mounting Holes:  
7,1 diameter through hole.  
4 places.



Bolt Hole Interface	Gauge Port	Ports A,B,P,T	ALUMINIUM		SG IRON	
			Model Code	List Price	Model Code	List Price
Inch	.25 NPTF	.375 NPTF	FRB		FRB/S	
Inch	.25 NPTF	SAE-8	FRJ		FRJ/S	
Metric	.25 BSPP	.375 BSPP	FRU		FRU/S	

### FUNCTION



Relief P to T

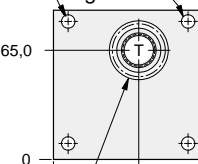
### Side Ported Subplates with Gasket Mount Tank Port

Mounting Holes (Sealed):  
7,1 diameter through hole.  
4 places.

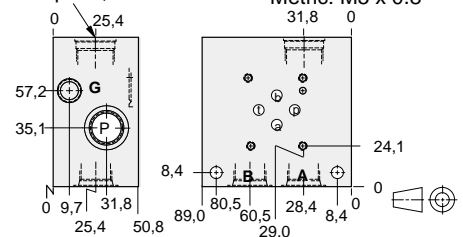
T-10A Cavity  
Locating Shoulder  
Depth 0,8

4 Interface Bolt Holes  
x 9,7 deep  
Inch:10-24 UNC  
Metric: M5 x 0.8

(4) - O12 O-rings



(1) - 123 O-rings



Bolt Hole Interface	Gauge Port	Ports A,B,P	ALUMINIUM		SG IRON	
			Model Code	List Price	Model Code	List Price
Inch	.25 NPTF	.375 NPTF	FTB		FTB/S	
Inch	.25 NPTF	SAE-8	FTJ		FTJ/S	
Metric	.25 BSPP	.375 BSPP	FTU		FTU/S	

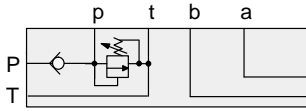
### TYPICAL CARTRIDGES USED WITH BODIES SHOWN ABOVE

	Pilot Operated Relief Valve		Pilot Operated "Kick-Down" Relief Valve
	RPEC Page 1.06		RQEB Page 1.12
	Pilot Operated, Rapid Response Relief Valve		Direct Acting Relief Valve
	RPEE Page 1.08		RDDA Page 1.10

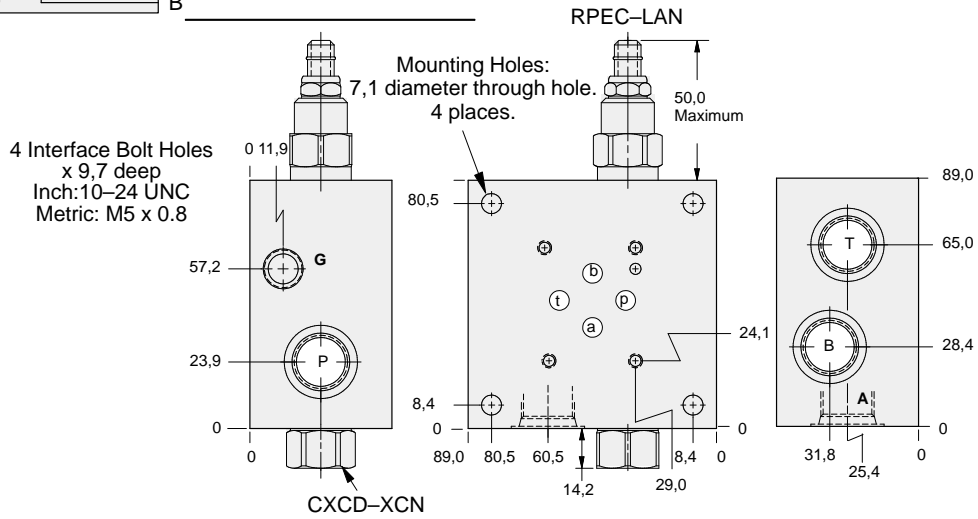
- Aluminium rated to 210 bar and SG Iron rated to 350 bar.
- See page viii for ordering cartridge/body and seals. Pressure ratings, material specifications on page xiv.

## Side Ported Subplates

### FUNCTION



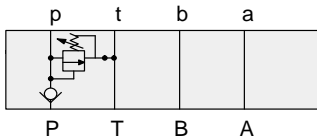
Relief P to T  
Check on P



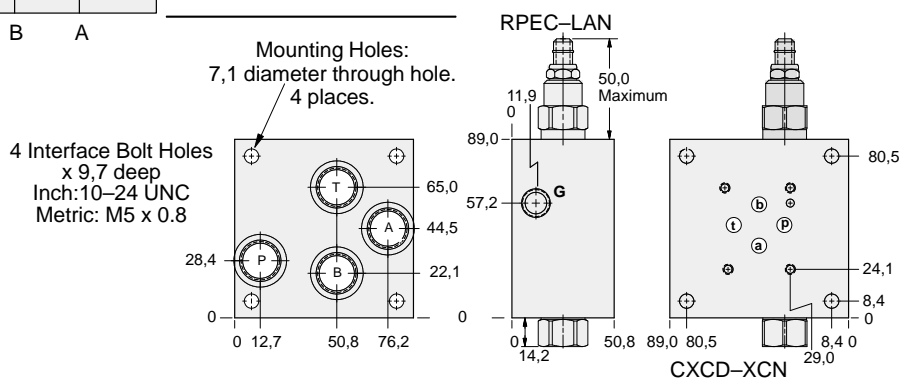
Bolt Hole Interface	Gauge Port	Port A,B,P,T	ALUMINIUM		SG IRON	
			Model Code	List Price	Model Code	List Price
Inch	.25 NPTF	.375 NPTF	YRCC-LAN-BB		YRCC-LAN-BB/S	
Inch	.25 NPTF	SAE-8	YRCC-LAN-BJ		YRCC-LAN-BJ/S	
Metric	.25 BSPP	.375 BSPP	YRCC-LAN-BU		YRCC-LAN-BU/S	

## Rear Ported Subplates

### FUNCTION



Relief P to T  
Check on P



Bolt Hole Interface	Gauge Port	Port A,B,P,T	ALUMINIUM		SG IRON	
			Model Code	List Price	Part Number	List Price
Inch	.25 NPTF	.375 NPTF	YRCB-LAN-BB		YRCB-LAN-BB/S	
Inch	.25 NPTF	SAE-8	YRCB-LAN-BJ		YRCB-LAN-BJ/S	
Metric	.25 BSPP	.375 BSPP	YRCB-LAN-BU		YRCB-LAN-BU/S	



# ISO 03 SANDWICH BODIES

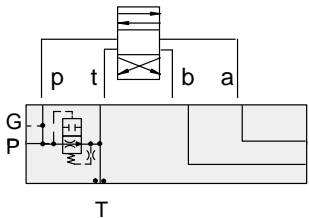


- Aluminium rated to 210 bar and SG Iron rated to 350 bar.
- See page viii for ordering cartridge/body and seals. Pressure ratings, material specifications on page xiv.

03 SUBPLATE

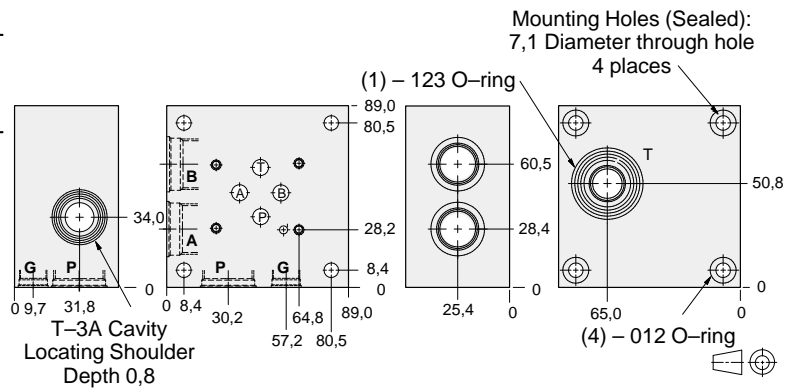
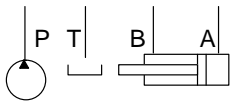
				ALUMINIM		DUCTILE IRON	
				Model Code	List Price	Model Code	List Price

## Side Ported Subplates with Gasket Mount Tank Port



### FUNCTION

Air-Bleed and Start-Up



Bolt Hole Interface	Ports T	Ports A,B,P	Gauge Port	ALUMINIUM		SG IRON	
				Model Code	List Price	Model Code	List Price
Inch	.375 NPTF	.375 NPTF	.25 NPTF	CTB		CTB/S	
Inch	.375 NPTF	SAE-8	.25 NPTF	CTJ		CTJ/S	
Metric	.375 BSPP	.375 BSPP	.25 BSPP	CTU		CTU/S	

### TYPICAL CARTRIDGES USED WITH BODIES SHOWN ABOVE

	Air Bleed and Start-up Valve		
	NQEB Page 10.16		

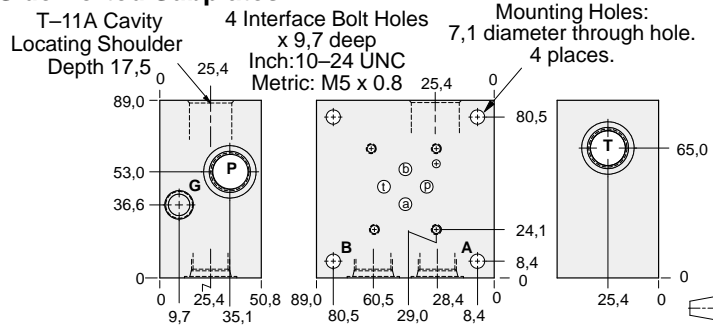
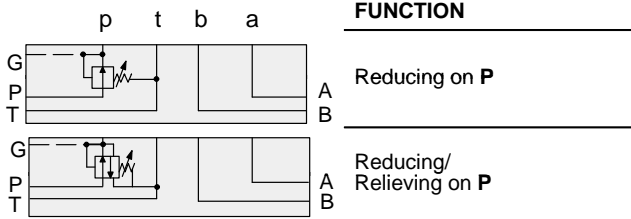


# ISO 03 SANDWICH BODIES



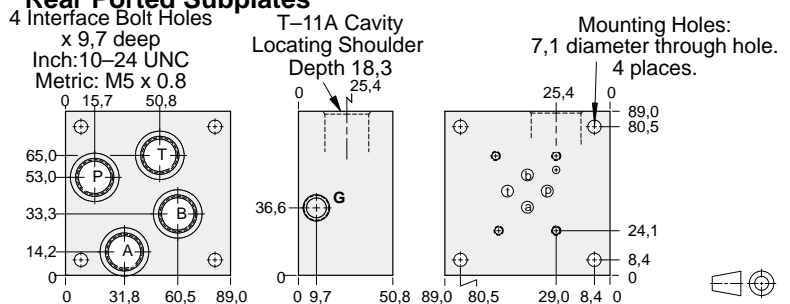
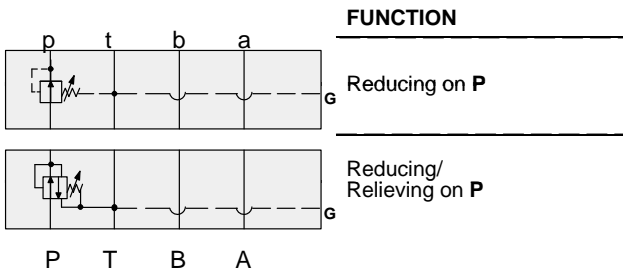
- Aluminium rated to 210 bar and SG Iron rated to 350 bar.
- See page viii for ordering cartridge/body and seals. Pressure ratings, material specifications on page xiv.

## Side Ported Subplates



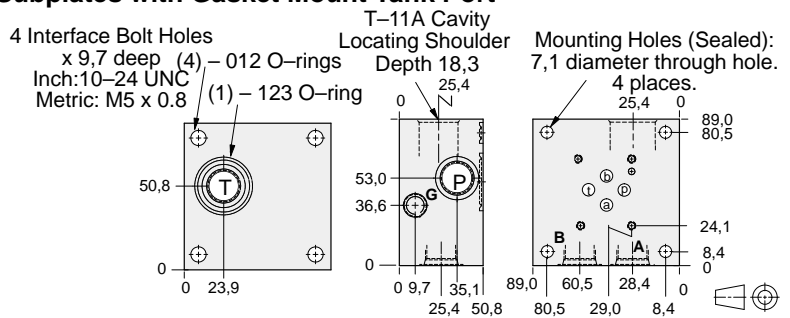
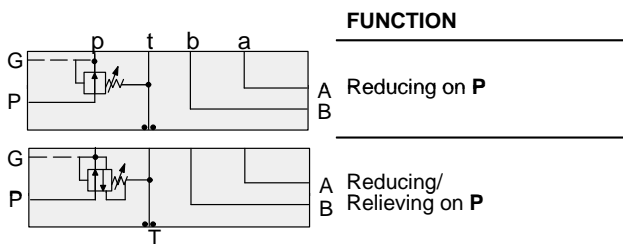
Bolt Hole Interface	Gauge Port	Ports A,B,P,T	ALUMINIUM		SG IRON	
			Model Code	List Price	Model Code	List Price
Inch	.25 NPTF	.375 NPTF	ESB		ESB/S	
Inch	.25 NPTF	SAE-8	ESJ		ESJ/S	
Metric	.25 BSPP	.375 BSPP	ESU		ESU/S	

## Rear Ported Subplates



Bolt Hole Interface	Gauge Port	Ports A,B,P,T	ALUMINIUM		SG IRON	
			Model Code	List Price	Model Code	List Price
Inch	.25 NPTF	.375 NPTF	ERB		ERB/S	
Inch	.25 NPTF	SAE-8	ERJ		ERJ/S	
Metric	.25 BSPP	.375 BSPP	ERU		ERU/S	

## Side Ported Subplates with Gasket Mount Tank Port



Bolt Hole Interface	Gauge Port	Ports A,B,P,T	ALUMINIUM		SG IRON	
			Model Code	List Price	Model Code	List Price
Inch	.25 NPTF	.375 NPTF	ETB		ETB/S	
Inch	.25 NPTF	SAE-8	ETJ		ETJ/S	
Metric	.25 BSPP	.375 BSPP	ETU		ETU/S	

TYPICAL CARTRIDGES USED WITH BODIES SHOWN ABOVE			
	Pilot Operated Reducing Valve		Pilot Operated Relief Valve
	PBDB Page 3.06		PPDB Page 3.10



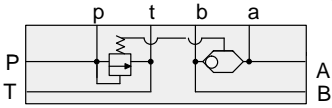
# ISO 03 SANDWICH BODIES



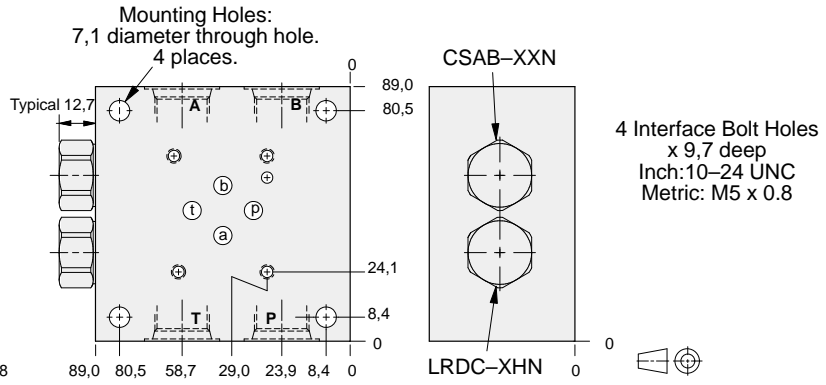
- Aluminium rated to 210 bar and SG Iron rated to 350 bar.
- See page viii for ordering cartridge/body and seals. Pressure ratings, material specifications on page xiv.

## Side Ported Subplates

### FUNCTION



Bypass  
Compensator  
for Proportional  
Valves



Bolt Hole Interface	Port A,B,P,T	ALUMINIUM		SG IRON	
		Model Code	List Price	Model Code	List Price
Inch	.375 NPTF	YFCL-XHN-BB		YFCL-XHN-BB/S	
Inch	SAE-8	YFCL-XHN-BJ		YFCL-XHN-BJ/S	
Metric	.375 BSPP	YFCL-XHN-BU		YFCL-XHN-BU/S	



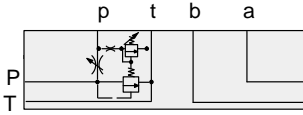
# ISO 03 SANDWICH BODIES



- Aluminium rated to 210 bar and SG Iron rated to 350 bar.
- See page viii for ordering cartridge/body and seals. Pressure ratings, material specifications on page xiv.

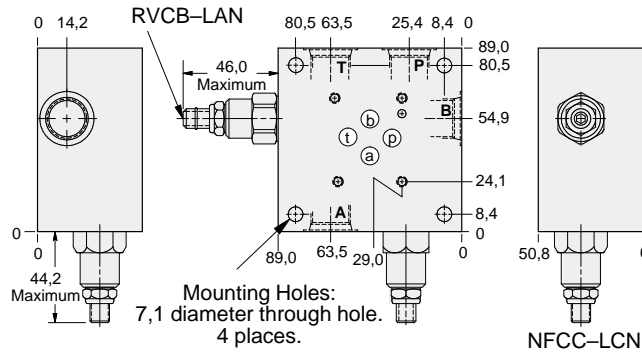
## Side Ported Subplates

### FUNCTION



Relief P to T  
and Bypass  
A Flow Regulator

4 Interface Bolt Holes  
x 9,7 deep  
Inch: 10-24 UNC  
Metric: M5 x 0.8



Bolt Hole Interface	Port A,B,P,T	ALUMINIUM		SG IRON	
		Model Code	List Price	Model Code	List Price
Inch	.375 NPTF	YFCS-LCN-BB		YFCS-LCN-BB/S	
Inch	SAE-8	YFCS-LCN-BJ		YFCS-LCN-BJ/S	
Metric	.375 BSPP	YFCS-LCN-BU/M		YFCS-LCN-BU/T	

03 SUBPLATE



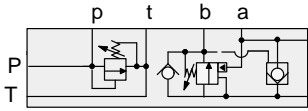
# ISO 03 SANDWICH BODIES



- Aluminium rated to 210 bar and SG Iron rated to 350 bar.
- See page viii for ordering cartridge/body and seals. Pressure ratings, material specifications on page xiv.

## Side Ported Subplates

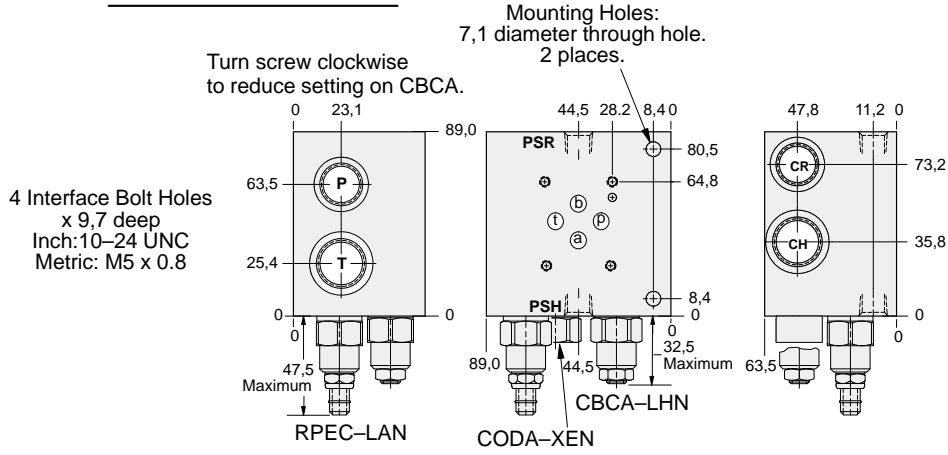
### FUNCTION



A Relief P to T  
Regenerative  
B to A

B

03 SUBPLATE



Bolt Holes Interface	Ports T, CH	Ports P, CR	Ports PSH, PSR	ALUMINIUM		SG IRON	
				Model Code	List Price	Model Code	List Price
Inch	.50 NPTF	.375 NPTF	.25 NPTF	YDCG-LHN-BC		YDCG-LHN-BC/S	
Inch	SAE-10	SAE-8	.25 NPTF	YDCG-LHN-BK		YDCG-LHN-BK/S	
Metric	.50 BSPP	.375 BSPP	.25 BSPP	YDCG-LHN-BV		YDCG-LHN-BV/S	