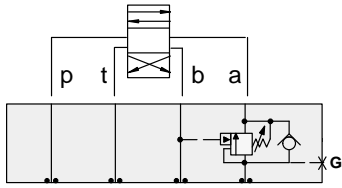




# ISO 05 SANDWICH BODIES



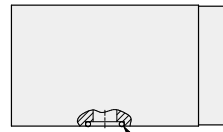
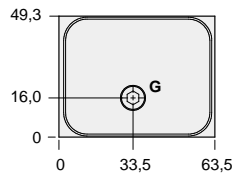
- Aluminium rated to 210 bar and SG Iron rated to 350 bar.
- See page viii for ordering cartridge/body and seals. Pressure ratings, material specifications on page xiv.



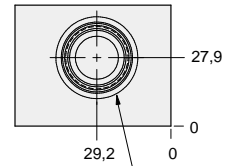
### FUNCTION

On A Pilot from B

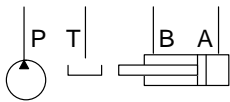
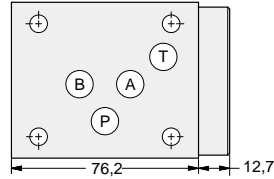
### Counterbalance Valves



(5) - 014 O-rings



T-2A Cavity Locating Shoulder Depth 29,7



Gauge Port (Plugged)	ALUMINIUM		SG IRON	
	Model Code	List Price	Model Code	List Price
.25 NPTF	<b>BBA</b>		<b>BBA/S</b>	
.25 BSPP	<b>BBA/M</b>		<b>BBA/T</b>	

05 COUNTERBALANCE

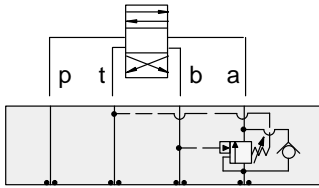
TYPICAL CARTRIDGES USED WITH BODIES SHOWN ABOVE			
	Counterbalance Valve, 3:1 Pilot Ratio		
	<b>CBEA Page 4.10</b>		
	Counterbalance Valve, 4.5:1 Pilot Ratio		
	<b>CBEG Page 4.12</b>		
	Counterbalance Valve, 10:1 Pilot Ratio		
	<b>CBEH Page 4.14</b>		
<b>OTHER VALVES:</b>			



# ISO 05 SANDWICH BODIES



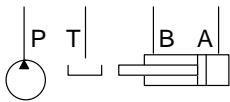
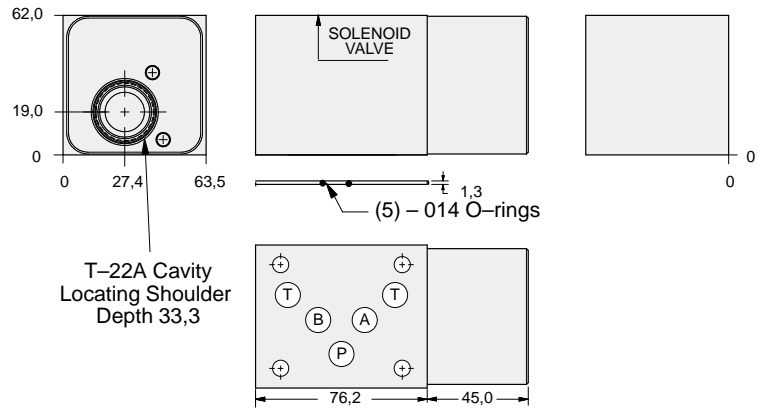
- Aluminium rated to 210 bar and SG Iron rated to 350 bar.
- See page viii for ordering cartridge/body and seals. Pressure ratings, material specifications on page xiv.



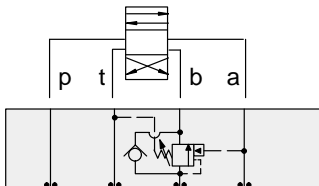
### FUNCTION

On **A** Pilot from **B**  
Vent to **T**

### Counterbalance Valves



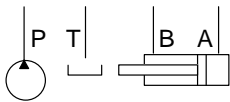
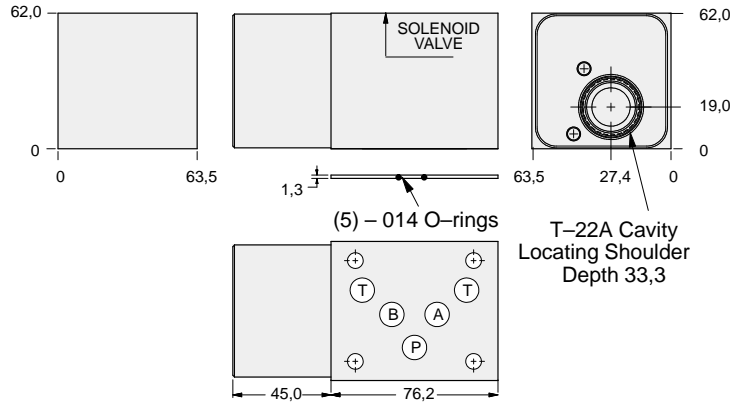
ALUMINIUM		SG IRON	
Model Code	List Price	Model Code	List Price
<b>NBA</b>		<b>NBA/S</b>	



### FUNCTION

On **B** Pilot from **A**  
Vent to **T**

### Counterbalance Valves



ALUMINIUM		SG IRON	
Model Code	List Price	Part Number	List Price
<b>NBB</b>		<b>NBB/S</b>	

### TYPICAL CARTRIDGES USED WITH BODIES SHOWN ABOVE

	Vented Counterbalance Valve, 3:1 Pilot Ratio		
	CWEA Page 4.18		
	Vented Counterbalance Valve, 5:1 Pilot Ratio		
	CWEG Page 4.20		
OTHER VALVES:			

05 COUNTERBALANCE

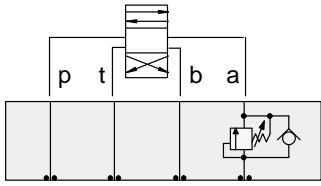


# ISO 05 SANDWICH BODIES



- Aluminium rated to 210 bar and SG Iron rated to 350 bar.
- See page viii for ordering cartridge/body and seals. Pressure ratings, material specifications on page xiv.

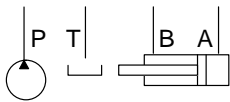
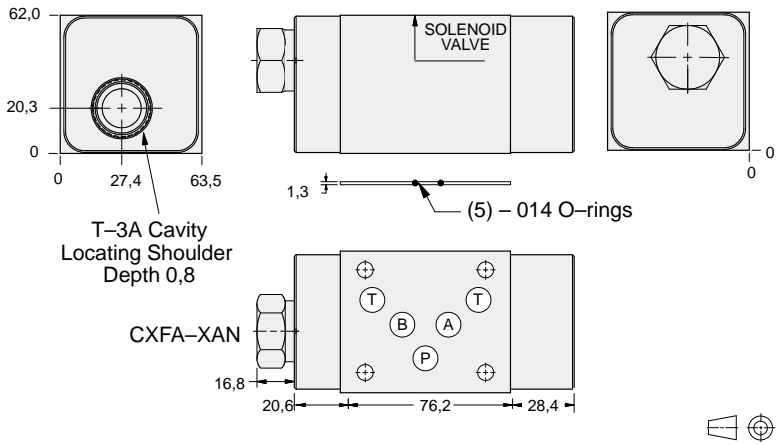
05 COUNTERBALANCE



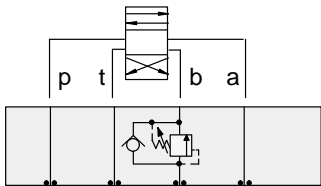
### FUNCTION

On **A**  
No Pilot Assist

### Counterbalance Valves



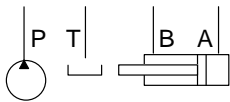
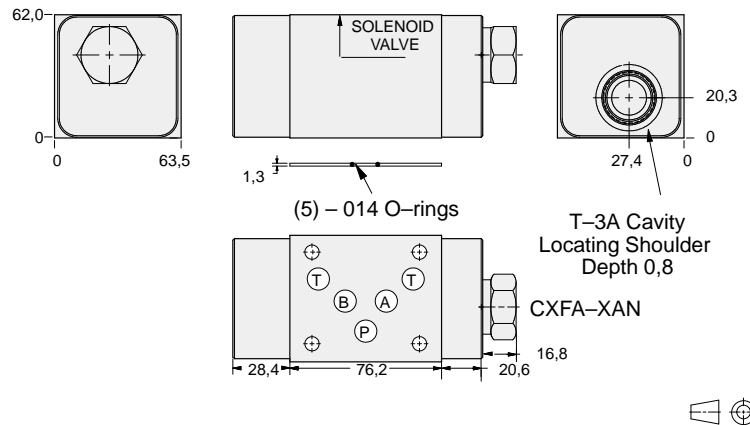
ALUMINIUM		SG IRON	
Model Code	List Price	Model Code	List Price
<b>CB4</b>		<b>CB4/S</b>	



### FUNCTION

On **B**  
No Pilot Assist

### Counterbalance Valves



ALUMINIUM		SG IRON	
Model Code	List Price	Part Number	List Price
<b>CB5</b>		<b>CB5/S</b>	

### TYPICAL CARTRIDGES USED WITH BODIES SHOWN ABOVE

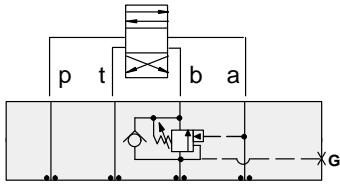
	Direct Acting Relief Valve		
	RDFA Page 1.10		
<b>OTHER VALVES:</b>			



# ISO 05 SANDWICH BODIES



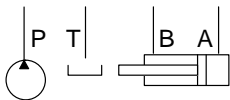
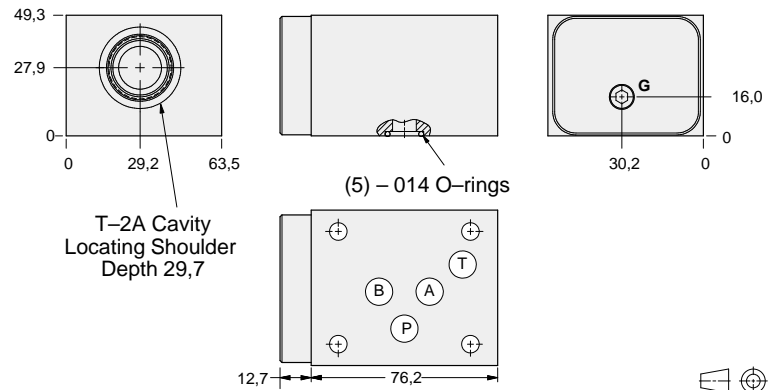
- Aluminium rated to 210 bar and SG Iron rated to 350 bar.
- See page viii for ordering cartridge/body and seals. Pressure ratings, material specifications on page xiv.



### FUNCTION

On **B**  
Pilot from **A**

### Counterbalance Valves



Gauge Port (Plugged)	ALUMINIUM		SG IRON	
	Model Code	List Price	Model Code	List Price
.25 NPTF	<b>BBB</b>		<b>BBB/S</b>	
.25 BSPP	<b>BBB/M</b>		<b>BBB/T</b>	

05 COUNTERBALANCE

### TYPICAL CARTRIDGES USED WITH BODIES SHOWN ABOVE

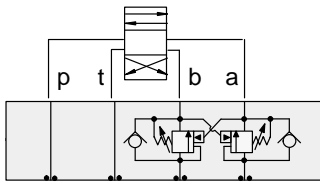
	Counterbalance Valve, 3:1 Pilot Ratio		
	<b>CBEA Page 4.10</b>		
	Counterbalance Valve, 4.5:1 Pilot Ratio		
	<b>CBEG Page 4.12</b>		
	Counterbalance Valve, 10:1 Pilot Ratio		
	<b>CBEH Page 4.14</b>		
<b>OTHER VALVES:</b>			



# ISO 05 SANDWICH BODIES



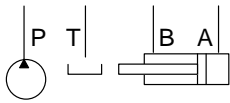
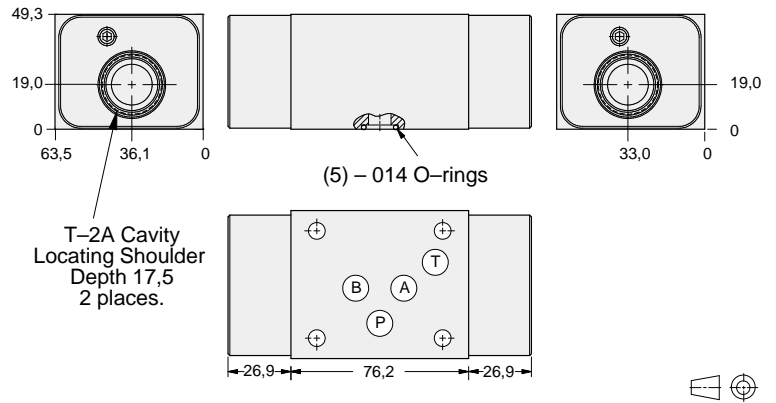
- Aluminium rated to 210 bar and SG Iron rated to 350 bar.
- See page viii for ordering cartridge/body and seals. Pressure ratings, material specifications on page xiv.



### FUNCTION

On **A** and **B**  
Cross-Piloted

### Counterbalance Valves



ALUMINIUM		SG IRON	
Model Code	List Price	Model Code	List Price
<b>BBY</b>		<b>BBY/S</b>	

05 COUNTERBALANCE

### TYPICAL CARTRIDGES USED WITH BODIES SHOWN ABOVE

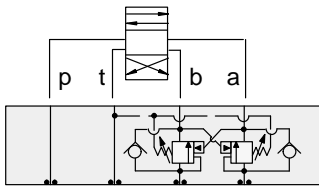
	Counterbalance Valve, 3:1 Pilot Ratio		
	<b>CBEA Page 4.10</b>		
	Counterbalance Valve, 4.5:1 Pilot Ratio		
	<b>CBEG Page 4.12</b>		
	Counterbalance Valve, 10:1 Pilot Ratio		
	<b>CBEH Page 4.14</b>		
<b>OTHER VALVES:</b>			



# ISO 05 SANDWICH BODIES



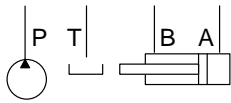
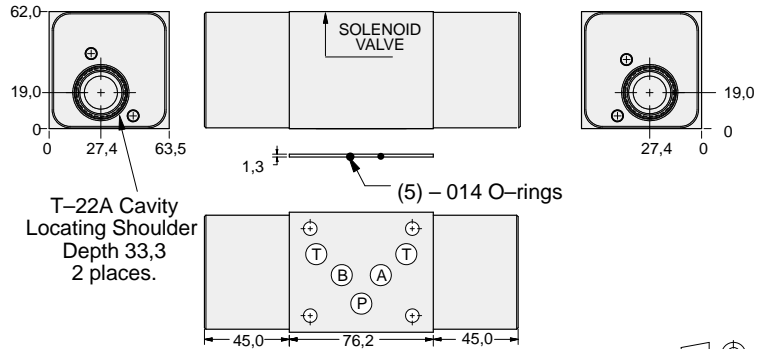
- Aluminium rated to 210 bar and SG Iron rated to 350 bar.
- See page viii for ordering cartridge/body and seals. Pressure ratings, material specifications on page xiv.



### FUNCTION

On **A** and **B**  
Cross-Piloted  
Vents to **T**

### Counterbalance Valves



ALUMINIUM		SG IRON	
Model Code	List Price	Model Code	List Price
<b>NBY</b>		<b>NBY/S</b>	

05 COUNTERBALANCE

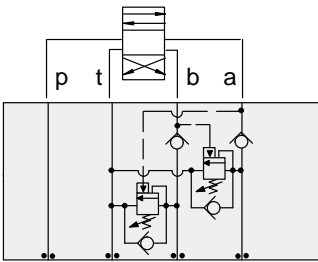
TYPICAL CARTRIDGES USED WITH BODIES SHOWN ABOVE			
	Vented Counterbalance Valve, 3:1 Pilot Ratio		
	<b>CWEA Page 4.18</b>		
	Vented Counterbalance Valve, 5:1 Pilot Ratio		
	<b>CWEG Page 4.20</b>		
OTHER VALVES:			



# ISO 05 SANDWICH BODIES



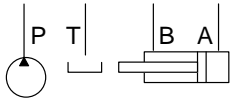
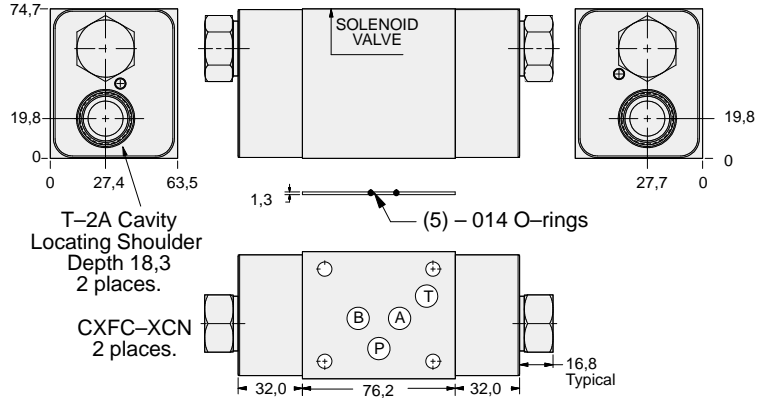
- Aluminium rated to 210 bar and SG Iron rated to 350 bar.
- See page viii for ordering cartridge/body and seals. Pressure ratings, material specifications on page xiv.



### FUNCTION

Cushion Lock  
Circuit  
On **A** and **B**

### Counterbalance Valves



ALUMINIUM		SG IRON	
Model Code	List Price	Model Code	List Price
<b>BB8</b>		<b>BB8/S</b>	

05 P.O. CHECK

### TYPICAL CARTRIDGES USED WITH BODIES SHOWN ABOVE

	Counterbalance Valve, 3:1 Pilot Ratio		
	<b>CBEA Page 4.10</b>		
	Counterbalance Valve, 4.5:1 Pilot Ratio		
	<b>CBEG Page 4.12</b>		
	Counterbalance Valve, 10:1 Pilot Ratio		
	<b>CBEH Page 4.14</b>		
<b>OTHER VALVES:</b>			