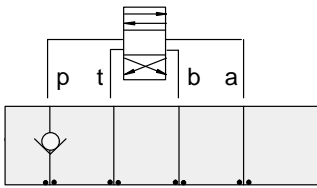




# ISO 05 SANDWICH BODIES



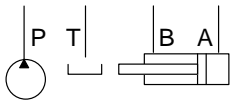
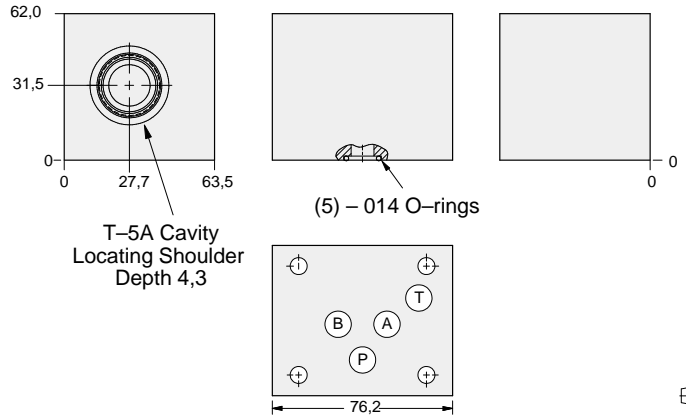
- Aluminium rated to 210 bar and SG Iron rated to 350 bar.
- See page viii for ordering cartridge/body and seals. Pressure ratings, material specifications on page xiv.



### FUNCTION

On P

### Check Valves



ALUMINIUM		SG IRON	
Model Code	List Price	Model Code	List Price
DBP		DBP/S	

05 CHECK

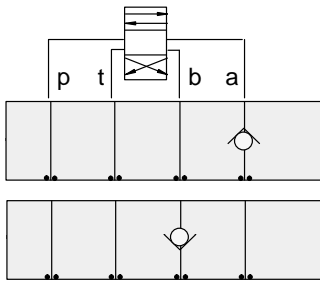
TYPICAL CARTRIDGES USED WITH BODIES SHOWN ABOVE			
	Check Valve, Free Flow Port 1 to Port 2 (Nose-to-Side)		
	CXFA Page 5.08		
OTHER VALVES:			



# ISO 05 SANDWICH BODIES



- Aluminium rated to 210 bar and SG Iron rated to 350 bar.
- See page viii for ordering cartridge/body and seals. Pressure ratings, material specifications on page xiv.

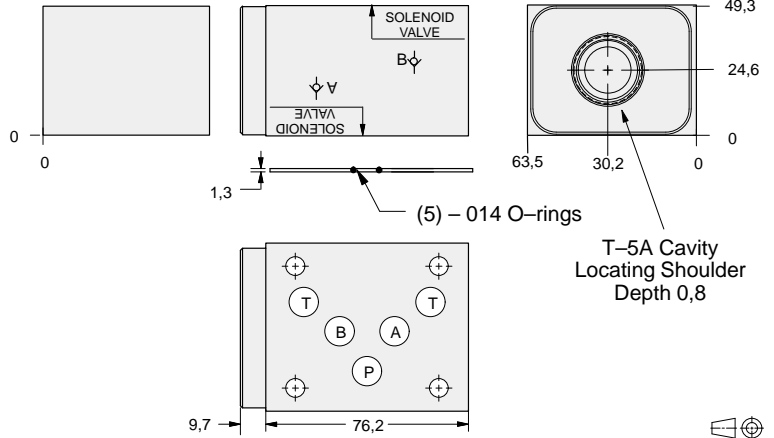


### FUNCTION

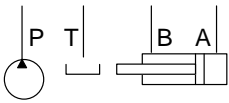
**On A**  
Free Flow Out  
of Valve

**On B**  
Free Flow Into  
Valve

### Check Valves



05 CHECK



ALUMINIUM		SG IRON	
Model Code	List Price	Model Code	List Price
<b>DBK</b>		<b>DBK/S</b>	

### TYPICAL CARTRIDGES USED WITH BODIES SHOWN ABOVE

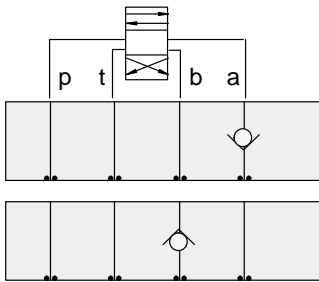
	Check Valve, Free Flow Port 1 to Port 2 (Nose-to-Side)		
	<b>CXFA Page 5.08</b>		
<b>OTHER VALVES:</b>			



# ISO 05 SANDWICH BODIES



- Aluminium rated to 210 bar and SG Iron rated to 350 bar.
- See page viii for ordering cartridge/body and seals. Pressure ratings, material specifications on page xiv.

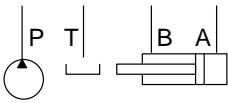
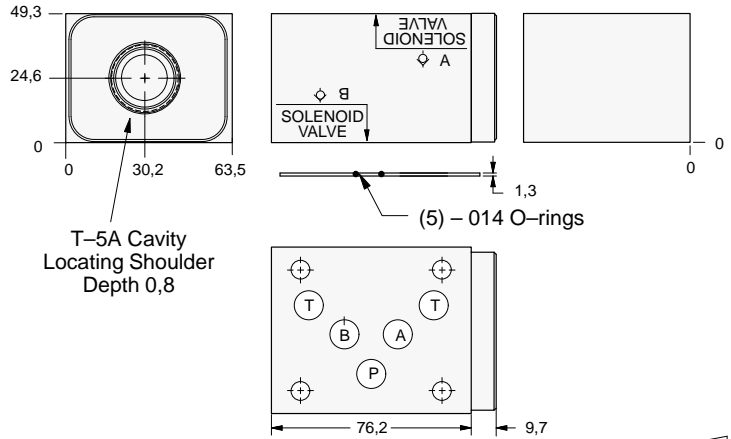


### FUNCTION

**On A**  
Free Flow Into Valve

**On B**  
Free Flow Out of Valve

### Check Valves



ALUMINIUM		SG IRON	
Model Code	List Price	Model Code	List Price
DBJ		DBJ/S	

05 CHECK

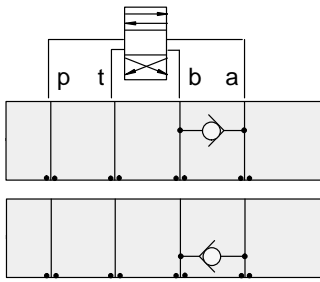
TYPICAL CARTRIDGES USED WITH BODIES SHOWN ABOVE			
	Check Valve, Free Flow Port 1 to Port 2 (Nose-to-Side)		
	CXFA Page 5.08		
OTHER VALVES:			



# ISO 05 SANDWICH BODIES



- Aluminium rated to 210 bar and SG Iron rated to 350 bar.
- See page viii for ordering cartridge/body and seals. Pressure ratings, material specifications on page xiv.

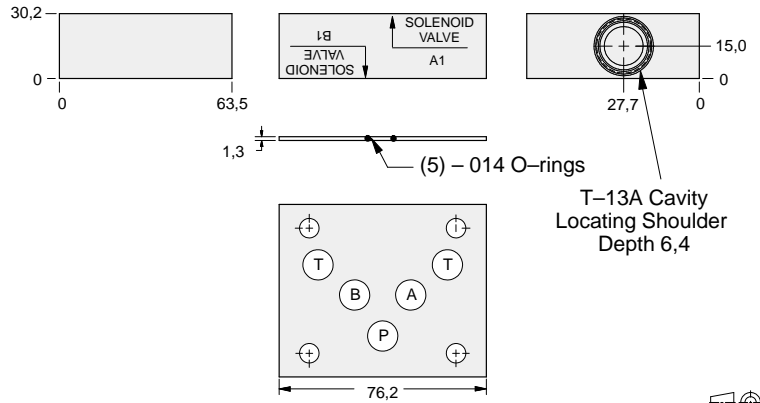


### FUNCTION

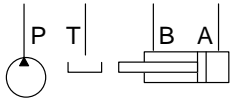
B to A

A to B

### Check Valves



05 CHECK



ALUMINIUM		SG IRON	
Model Code	List Price	Model Code	List Price
<b>DBS</b>		<b>DBS/S</b>	

### TYPICAL CARTRIDGES USED WITH BODIES SHOWN ABOVE

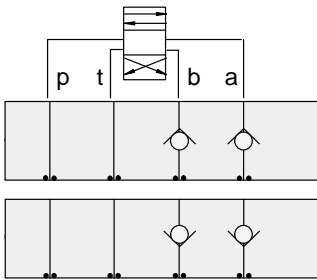
	Check Valve, Free Flow Port 1 to Port 2 (Nose-to-Side)		
	CXDA Page 5.08		
<b>OTHER VALVES:</b>			



# ISO 05 SANDWICH BODIES



- Aluminium rated to 210 bar and SG Iron rated to 350 bar.
- See page viii for ordering cartridge/body and seals. Pressure ratings, material specifications on page xiv.

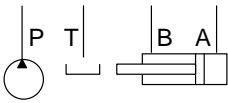
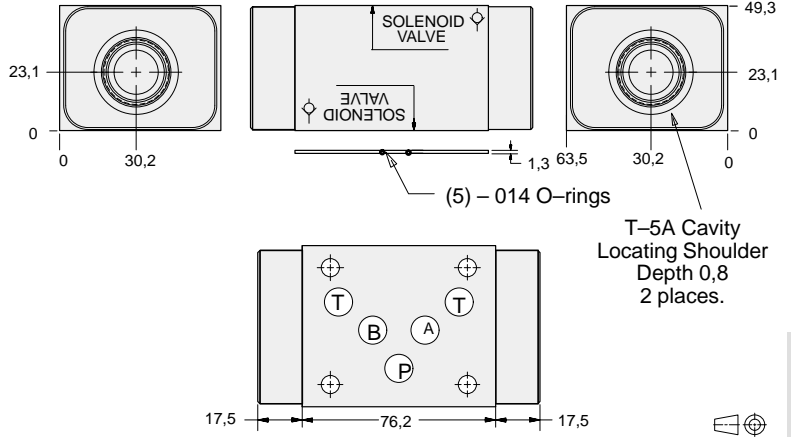


### FUNCTION

On **A** and **B**  
Free Flow **Out**  
of Valve

On **A** and **B**  
Free Flow **Into** Valve

### Check Valves



ALUMINIUM		SG IRON	
Model Code	List Price	Model Code	List Price
<b>DBL</b>		<b>DBL/S</b>	

05 CHECK

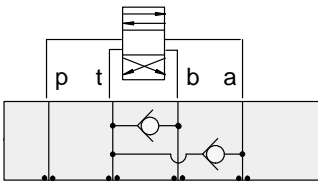
TYPICAL CARTRIDGES USED WITH BODIES SHOWN ABOVE			
	Check Valve, Free Flow Port 1 to Port 2 (Nose-to-Side)		
	<b>CXFA Page 5.08</b>		
<b>OTHER VALVES:</b>			



# ISO 05 SANDWICH BODIES



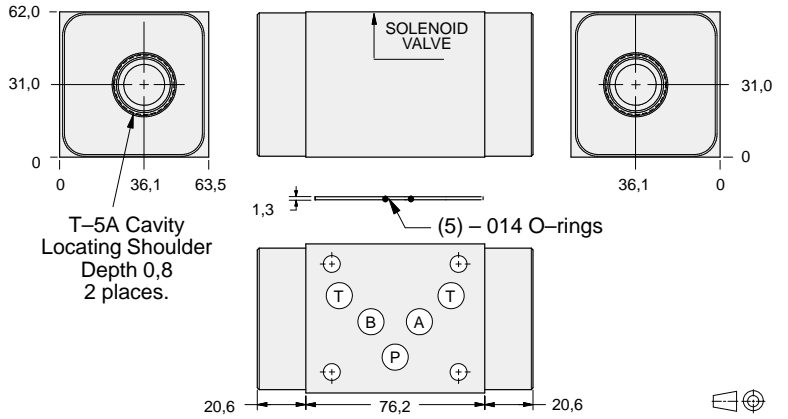
- Aluminium rated to 210 bar and SG Iron rated to 350 bar.
- See page viii for ordering cartridge/body and seals. Pressure ratings, material specifications on page xiv.



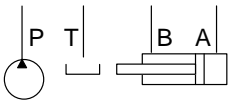
### FUNCTION

T to A and B

### Check Valves



05 CHECK



ALUMINIUM		SG IRON	
Model Code	List Price	Model Code	List Price
DBW		DBW/S	

### TYPICAL CARTRIDGES USED WITH BODIES SHOWN ABOVE

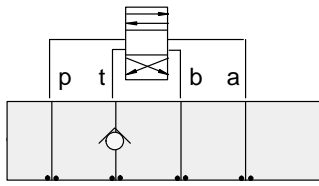
	Check Valve, Free Flow Port 1 to Port 2 (Nose-to-Side)		
	CXFA Page 5.08		
OTHER VALVES:			



# ISO 05 SANDWICH BODIES



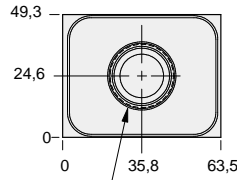
- Aluminium rated to 210 bar and SG Iron rated to 350 bar.
- See page viii for ordering cartridge/body and seals. Pressure ratings, material specifications on page xiv.



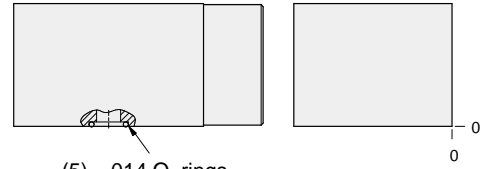
### FUNCTION

On T

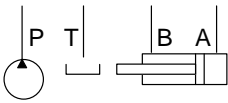
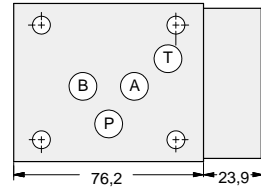
### Check Valves



T-5A Cavity  
Locating Shoulder  
Depth 1,5



(5) - 014 O-rings



ALUMINIUM		SG IRON	
Model Code	List Price	Model Code	List Price
DBT		DBT/S	



05 CHECK

TYPICAL CARTRIDGES USED WITH BODIES SHOWN ABOVE			
	Check Valve, Free Flow Port 1 to Port 2 (Nose-to-Side)		
	CXFA Page 5.08		
OTHER VALVES:			