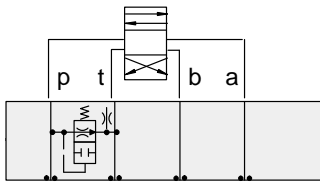




ISO 05 SANDWICH BODIES



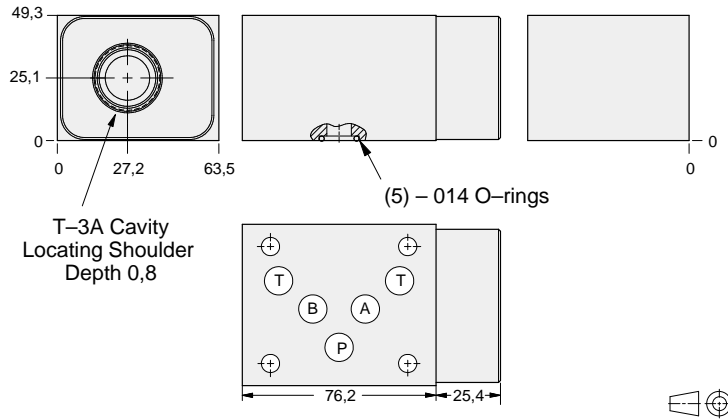
- Aluminium rated to 210 bar and SG Iron rated to 350 bar.
- See page viii for ordering cartridge/body and seals. Pressure ratings, material specifications on page xiv.



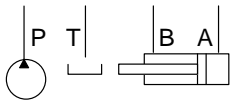
FUNCTION

Air-Bleed
and Start-Up

Circuit Savers



05 CIRCUIT SAVER



ALUMINIUM		SG IRON	
Model Code	List Price	Model Code	List Price
CBP		CBP/S	

TYPICAL CARTRIDGES USED WITH BODIES SHOWN ABOVE

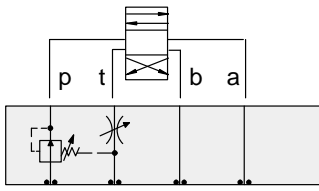
	Air Bleed and Start-up Valve		
	NQEB Page 10.16		
OTHER VALVES:			



ISO 05 SANDWICH BODIES



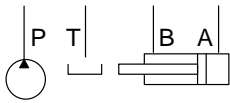
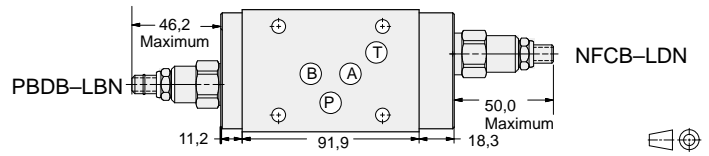
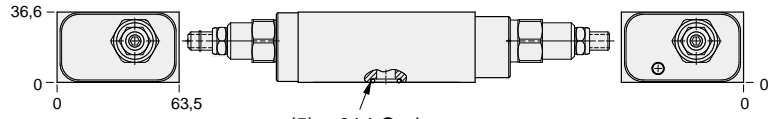
- Aluminium rated to 210 bar and SG Iron rated to 350 bar.
- See page viii for ordering cartridge/body and seals. Pressure ratings, material specifications on page xiv.



FUNCTION

Pilot Choke

Circuit Savers



ALUMINIUM		SG IRON	
<i>Model Code</i>	<i>List Price</i>	<i>Model Code</i>	<i>List Price</i>
YNAB-LDN-BA		YNAB-LDN-BA/S	

05 CIRCUIT SAVER

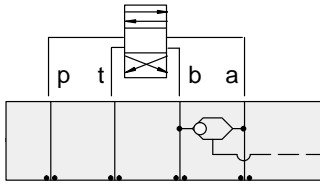


ISO 05 SANDWICH BODIES



- Aluminium rated to 210 bar and SG Iron rated to 350 bar.
- See page viii for ordering cartridge/body and seals. Pressure ratings, material specifications on page xiv.

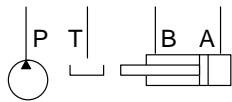
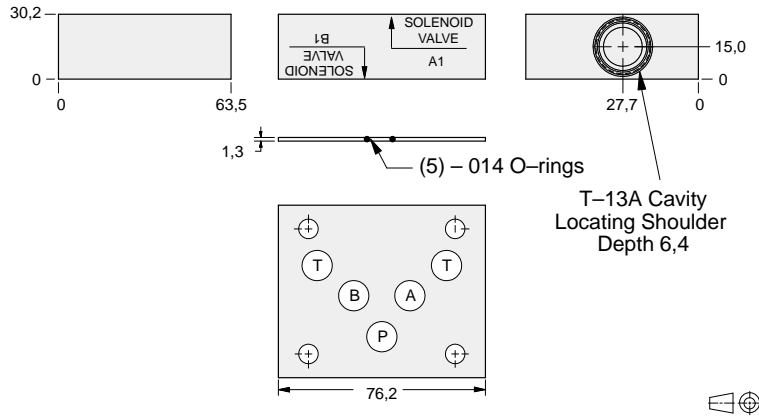
05 CIRCUIT SAVER



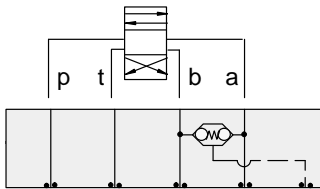
FUNCTION

Shuttle
A and B
Output External

Circuit Savers



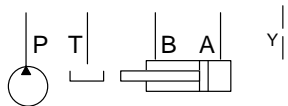
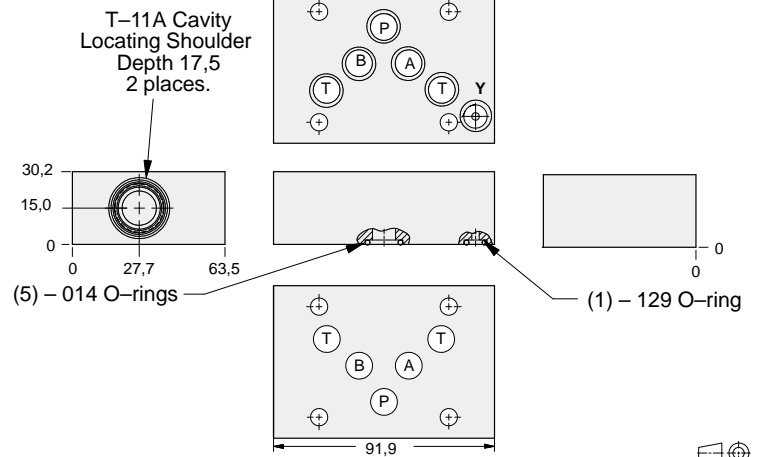
ALUMINIUM		SG IRON	
Model Code	List Price	Model Code	List Price
DBS		DBS/S	



FUNCTION

Checks from
A and B-Adapter
to ISO 05 w/Y Port

Circuit Savers



ALUMINIUM		SG IRON	
Model Code	List Price	Part Number	List Price
BJS		BJS/S	

TYPICAL CARTRIDGES USED WITH BODIES SHOWN ABOVE

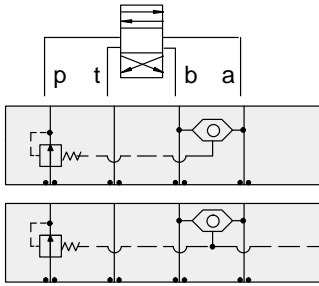
	2 Port Shuttle Valve, Signal External		
	CSAA Page 10.09 (use with DBS)		
	3 Port Shuttle Valve, Signal at Port 3		
	CDAB Page 10.10 (use with BJS)		
OTHER VALVES:			



ISO 05 SANDWICH BODIES



- Aluminium rated to 210 bar and SG Iron rated to 350 bar.
- See page viii for ordering cartridge/body and seals. Pressure ratings, material specifications on page xiv.

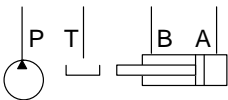
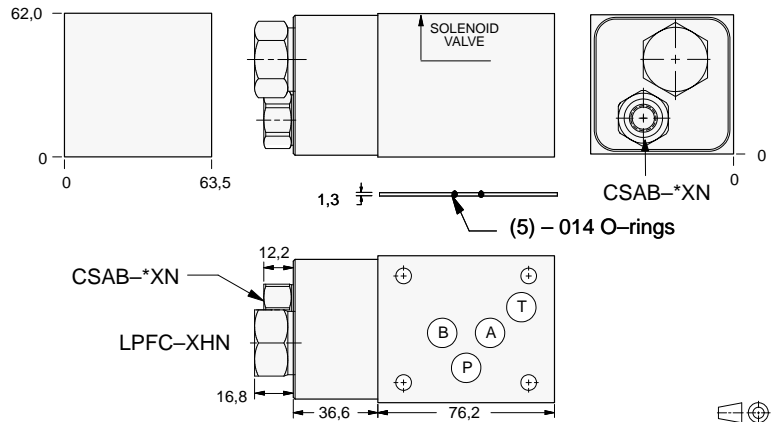


FUNCTION

Pressure Compensator (Restrictive)

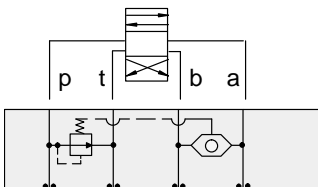
Pressure Compensator (Restrictive) w/Load-Sensing Port

Circuit Savers



Shuttle Cartridge	External Shuttle Port	ALUMINIUM		SG IRON	
		Model Code	List Price	Model Code	List Price
CSAB-XXN	None	YFEJ-XHN-BA		YFEJ-XHN-BA/S	
CSAB-AXN	SAE-4	YFEP-XHN-BA		YFEP-XHN-BA/S	
CSAB-BXN	.25 BSPP	YFEP-XHN-BA/M		YFEP-XHN-BA/T	

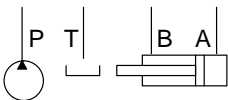
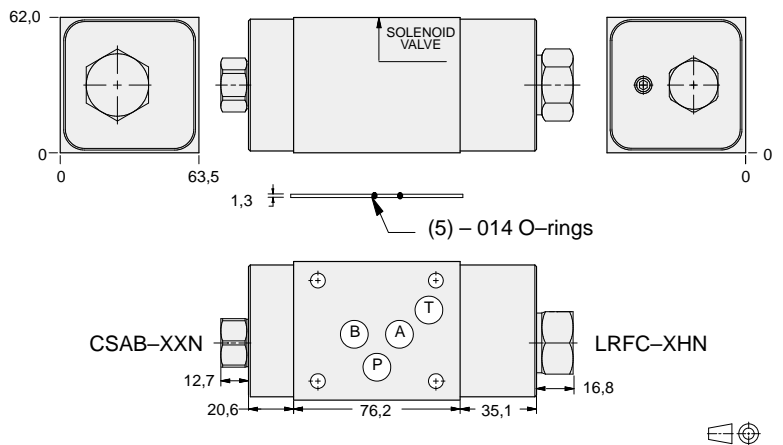
05 CIRCUIT SAVER



FUNCTION

Pressure Compensator (Bypass)

Circuit Savers



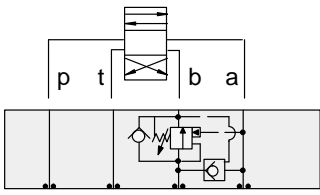
ALUMINIUM		SG IRON	
Model Code	List Price	Part Number	List Price
YFEV-XHN-BA		YFEV-XHN-BA/S	



ISO 05 SANDWICH BODIES



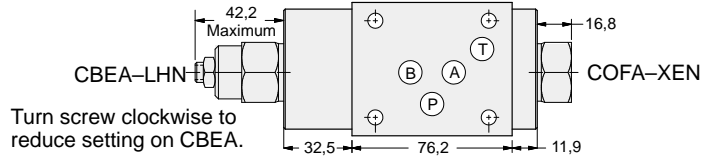
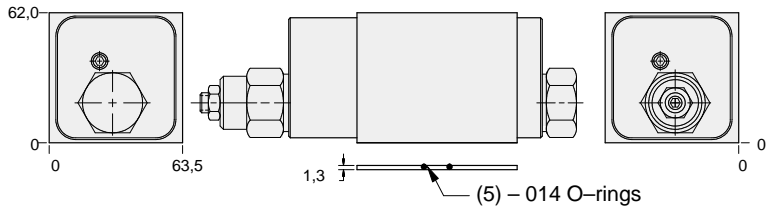
- Aluminium rated to 210 bar and SG Iron rated to 350 bar.
- See page viii for ordering cartridge/body and seals. Pressure ratings, material specifications on page xiv.



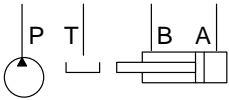
FUNCTION

B to A
Regenerative

Circuit Savers



05 CIRCUIT SAVER



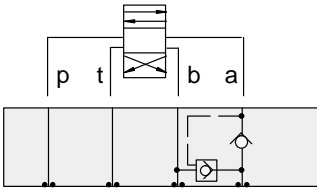
ALUMINIUM		SG IRON	
<i>Model Code</i>	<i>List Price</i>	<i>Model Code</i>	<i>List Price</i>
YDES-LHN-BA		YDES-LHN-BA/S	



ISO 05 SANDWICH BODIES



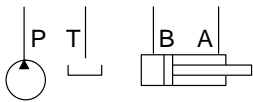
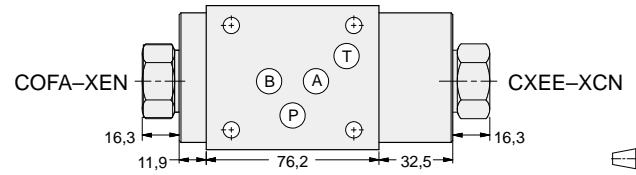
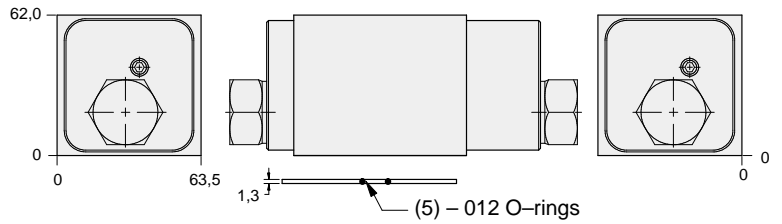
- Aluminium rated to 210 bar and SG Iron rated to 350 bar.
- See page viii for ordering cartridge/body and seals. Pressure ratings, material specifications on page xiv.



FUNCTION

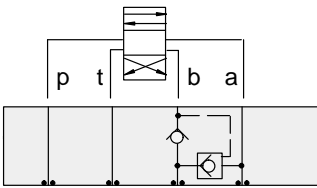
A to B
Regenerative
(Full Time)

Circuit Savers



ALUMINIUM		SG IRON	
Model Code	List Price	Model Code	List Price
YDEV-XCN-BA		YDEV-XCN-BA/S	

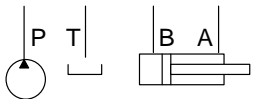
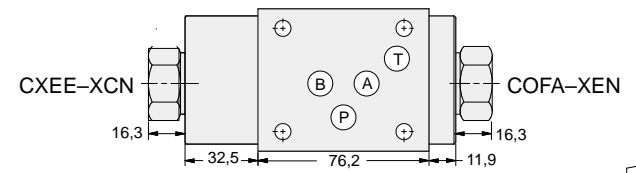
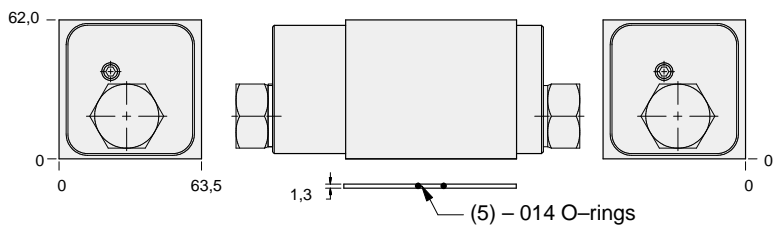
05 CIRCUIT SAVER



FUNCTION

B to A
Regenerative
(Full Time)

Circuit Savers



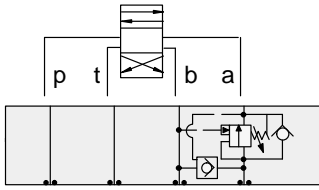
ALUMINIUM		SG IRON	
Model Code	List Price	Part Number	List Price
YDET-XCN-BA		YDET-XCN-BA/S	



ISO 05 SANDWICH BODIES



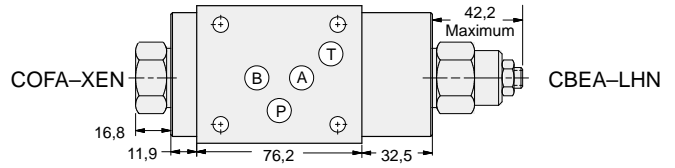
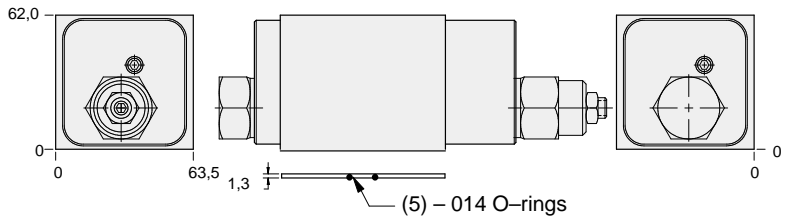
- Aluminium rated to 210 bar and SG Iron rated to 350 bar.
- See page viii for ordering cartridge/body and seals. Pressure ratings, material specifications on page xiv.



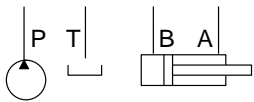
FUNCTION

A to B
Regenerative

Circuit Savers



Turn screw clockwise to reduce setting on CBEA.



ALUMINIUM		SG IRON	
<i>Model Code</i>	<i>List Price</i>	<i>Model Code</i>	<i>List Price</i>
YDER-LHN-BA		YDER-LHN-BA/S	

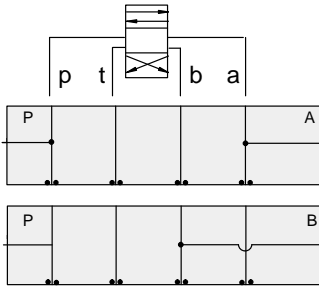
05 CIRCUIT SAVER



ISO 05 SANDWICH BODIES



- Aluminium rated to 210 bar and SG Iron rated to 350 bar.
- See page viii for ordering cartridge/body and seals. Pressure ratings, material specifications on page xiv.

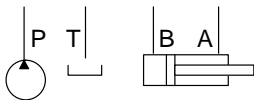
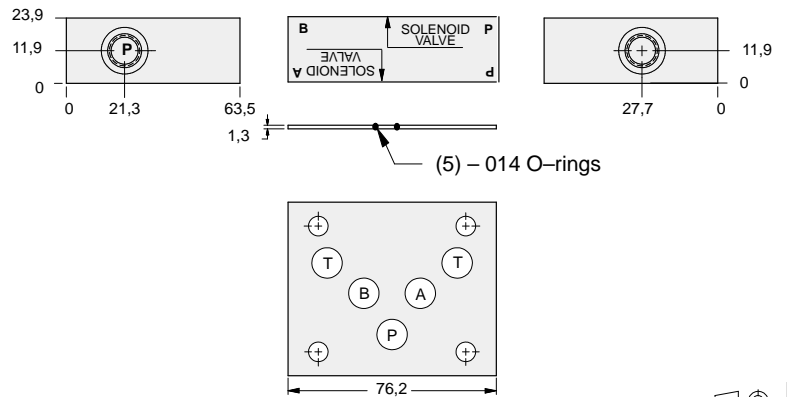


FUNCTION

P and A
Tap in Manifold

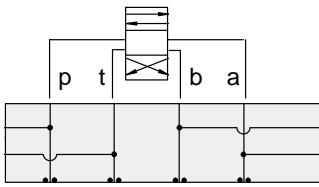
P and B
Tap in Manifold

Circuit Savers



External Port	ALUMINIUM		SG IRON	
	Model Code	List Price	Model Code	List Price
SAE-4	ZPS		ZPS/S	
.250 BSPP	ZVE		ZVE/S	
.25 NPTF	ZXE		ZXE/S	

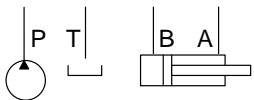
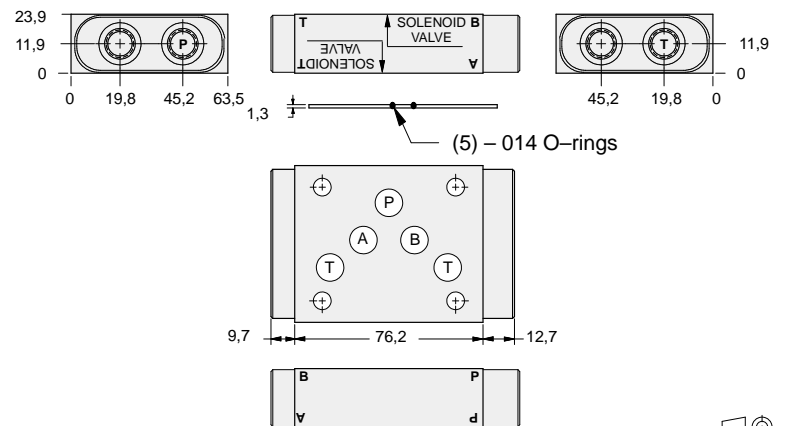
05 CIRCUIT SAVER



FUNCTION

P, T, A and B
Tap in Manifold

Circuit Savers



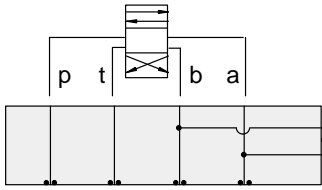
External Port	ALUMINIUM		SG IRON	
	Model Code	List Price	Part Number	List Price
SAE-4	ZKL		ZKL/S	
.250 BSPP	ZKM		ZKM/S	
.25 NPTF	ZKK		ZKK/S	



ISO 05 SANDWICH BODIES



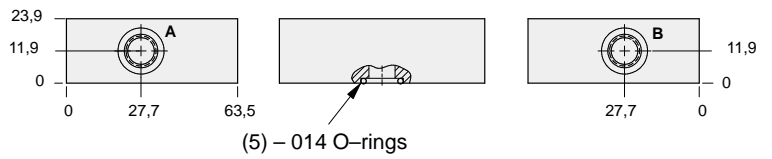
- Aluminium rated to 210 bar and SG Iron rated to 350 bar.
- See page viii for ordering cartridge/body and seals. Pressure ratings, material specifications on page xiv.



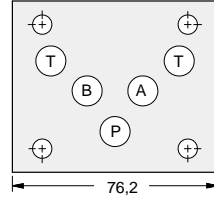
FUNCTION

A and B
Tap in Manifold

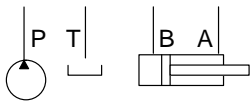
Circuit Savers



(5) – 014 O-rings

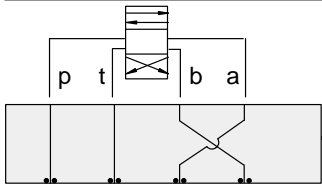


05 CIRCUIT SAVER



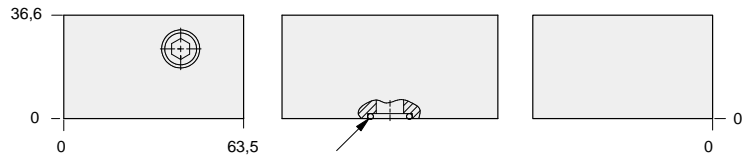
External Ports	ALUMINIUM		SG IRON	
	Model Code	List Price	Model Code	List Price
SAE-4	ZPR		ZPR/S	
.25 NPTF	ZXD		ZXD/S	
.25 BSPP	ZVD		ZVD/S	

Circuit Savers

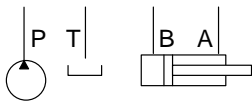
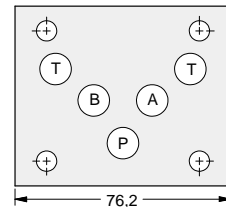


FUNCTION

Swap Block
Swaps **A** and **B**



(5) – 014 O-rings



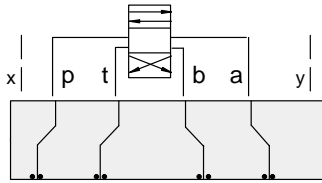
ALUMINIUM		SG IRON	
Model Code	List Price	Part Number	List Price
ZTB		ZTB/S	



ISO 05 SANDWICH BODIES



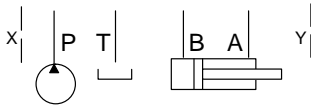
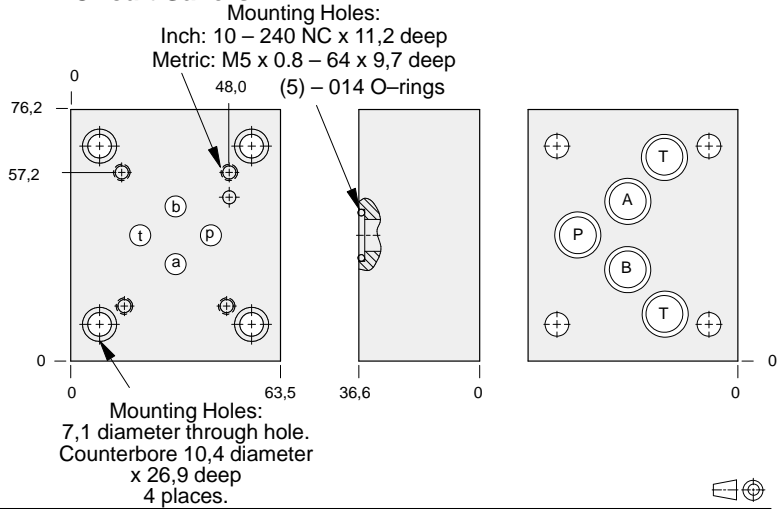
- Aluminium rated to 210 bar and SG Iron rated to 350 bar.
- See page viii for ordering cartridge/body and seals. Pressure ratings, material specifications on page xiv.



FUNCTION

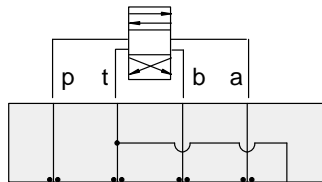
Adapter to Next Smaller Valve Pattern

Circuit Savers



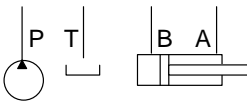
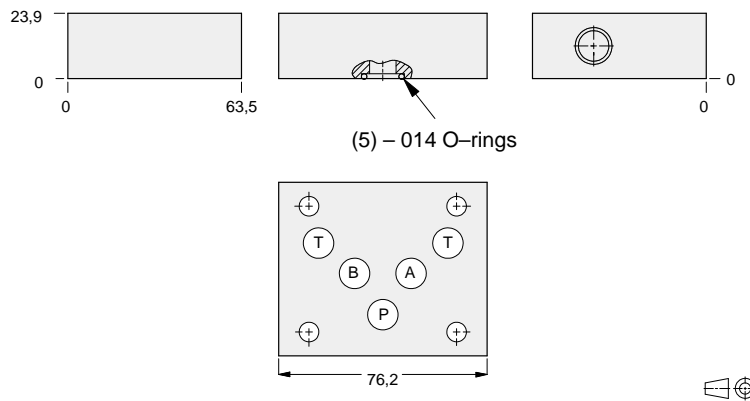
ALUMINIUM		SG IRON	
Model Code	List Price	Model Code	List Price
ZWU		ZWU/S	
ZVT		ZVT/S	

Circuit Savers



FUNCTION

ISO 05 to ISO 05 with Dual Tank Ports



ALUMINIUM		SG IRON	
Model Code	List Price	Part Number	List Price
ZXC		ZXC/S	

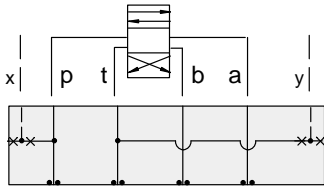
05 CIRCUIT SAVER



ISO 05 SANDWICH BODIES



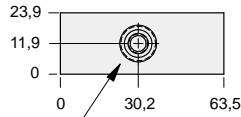
- Aluminium rated to 210 bar and SG Iron rated to 350 bar.
- See page viii for ordering cartridge/body and seals. Pressure ratings, material specifications on page xiv.



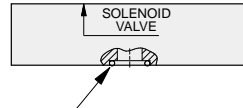
FUNCTION

ISO 05 to ISO 05
with **X** and **Y**
Access to **X** and **Y** (Amer)

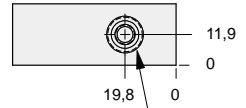
Circuit Savers



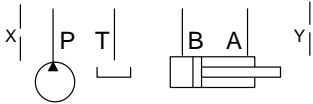
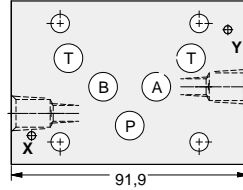
External Drain:
Use .062 NPTF Plug
Internal Drain:
Use .250 NPTF Plug



(5) - 014 O-rings
(1) 990-999-006 Installation Kit
(includes plugs)

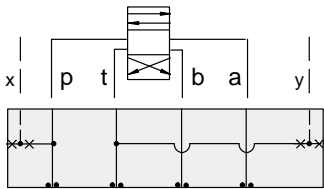


External Pilot:
Use .062 NPTF Plug
Internal Pilot:
Use .250 NPTF Plug



ALUMINIUM		SG IRON	
Model Code	List Price	Model Code	List Price
ZSV		ZSV/S	

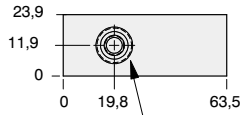
05 CIRCUIT SAVER



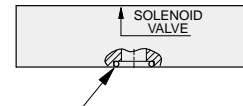
FUNCTION

ISO 05 to ISO 05
with **X** and **Y**
Access to **X** and **Y** (Euro)

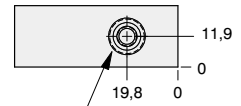
Circuit Savers



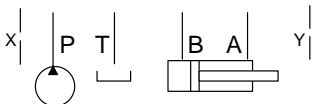
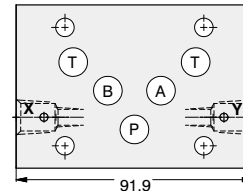
External Drain:
Use .062 NPTF Plug
Internal Drain:
Use .250 NPTF Plug



(5) - 014 O-rings
(1) 990-999-006 Installation Kit
(includes plugs)



External Pilot:
Use .062 NPTF Plug
Internal Pilot:
Use .250 NPTF Plug



ALUMINIUM		SG IRON	
Model Code	List Price	Part Number	List Price
ZST		ZST/S	