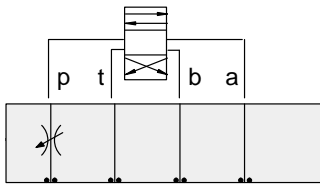




ISO 05 SANDWICH BODIES



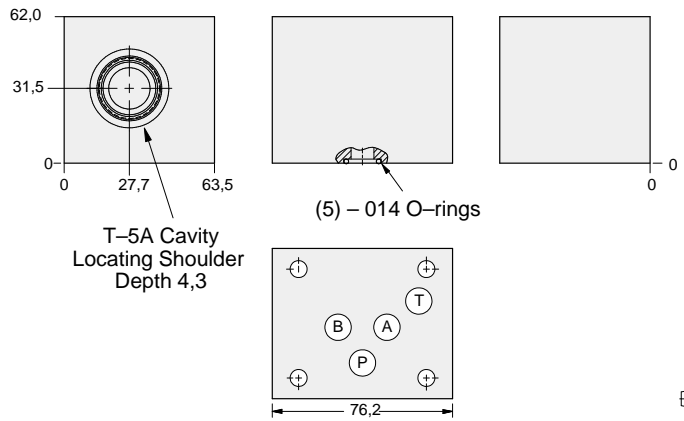
- Aluminium rated to 210 bar and SG Iron rated to 350 bar.
- See page viii for ordering cartridge/body and seals. Pressure ratings, material specifications on page xiv.



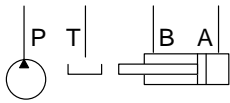
FUNCTION

Meter-In P

Flow Control Valves



05 FLOW CONTROL



ALUMINIUM		SG IRON	
Model Code	List Price	Model Code	List Price
DBP		DBP/S	

TYPICAL CARTRIDGES USED WITH BODIES SHOWN ABOVE

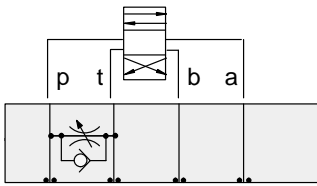
	Fully Adjustable Needle Valve		
	NFDC Page 5.12		
	Fixed Orifice, Pressure-Compensated Flow Control		
	FXDA Page 5.20		
OTHER VALVES:			



ISO 05 SANDWICH BODIES



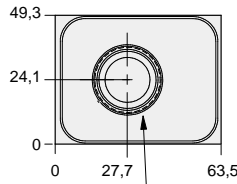
- Aluminium rated to 210 bar and SG Iron rated to 350 bar.
- See page viii for ordering cartridge/body and seals. Pressure ratings, material specifications on page xiv.



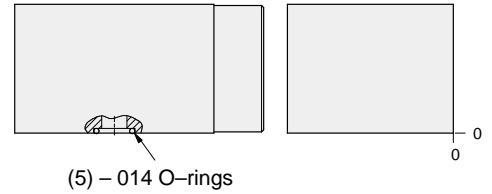
FUNCTION

Bleed-Off
P to T

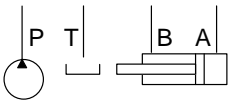
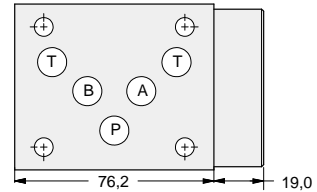
Flow Control Valves



T-5A Cavity
Locating Shoulder
Depth 0,8



(5) - 014 O-rings



ALUMINIUM		SG IRON	
Model Code	List Price	Model Code	List Price
DBQ		DBQ/S	

05 FLOW CONTROL

TYPICAL CARTRIDGES USED WITH BODIES SHOWN ABOVE

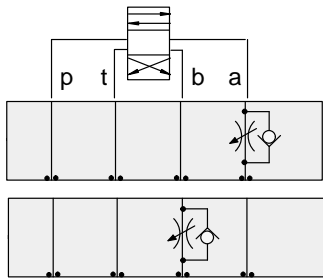
	Fully Adjustable Needle Valve		Fixed Orifice, Pressure-Compensated Flow Control
	NFDC Page 5.12		FXDA Page 5.20
	Fully Adjustable Needle Valve with Reverse Free Flow Check		Fixed Orifice, Pressure-Compensated Flow Control with Reverse Free Flow Check
	NCEB Page 5.16		FCDB Page 5.22
	Fully Adjustable Needle Valve with Reverse Free Flow Check, Low Flow		Fully Adjustable, Pressure-Compensated Flow Control with Reverse Free Flow Check
	NCEC Page 5.18		FDCB Page 5.24
OTHER VALVES:	CNEC		



ISO 05 SANDWICH BODIES



- Aluminium rated to 210 bar and SG Iron rated to 350 bar.
- See page viii for ordering cartridge/body and seals. Pressure ratings, material specifications on page xiv.

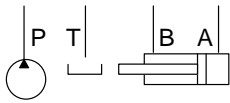
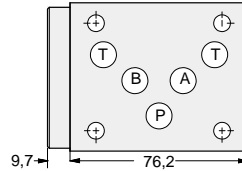
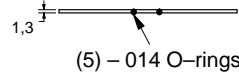
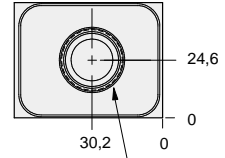
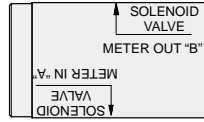
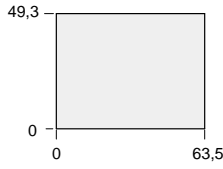


FUNCTION

Meter-In A

Meter-Out B

Flow Control Valves



ALUMINIUM		SG IRON	
Model Code	List Price	Model Code	List Price
DBB		DBB/S	

05 FLOW CONTROL

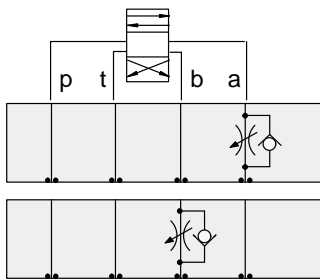
TYPICAL CARTRIDGES USED WITH BODIES SHOWN ABOVE			
	Fully Adjustable Needle Valve with Reverse Free Flow Check NCEB Page 5.16		Fully Adjustable, Pressure-Compensated Flow Control with Reverse Free Flow Check FDCB Page 5.24
	Fully Adjustable Needle Valve with Reverse Free Flow Check, Low Flow NCEC Page 5.18		
	Fixed Orifice, Pressure-Compensated Flow Control with Reverse Free Flow Check FCDB Page 5.22		
OTHER VALVES:	CNEC		



ISO 05 SANDWICH BODIES



- Aluminium rated to 210 bar and SG Iron rated to 350 bar.
- See page viii for ordering cartridge/body and seals. Pressure ratings, material specifications on page xiv.

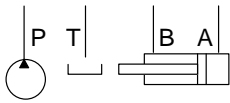
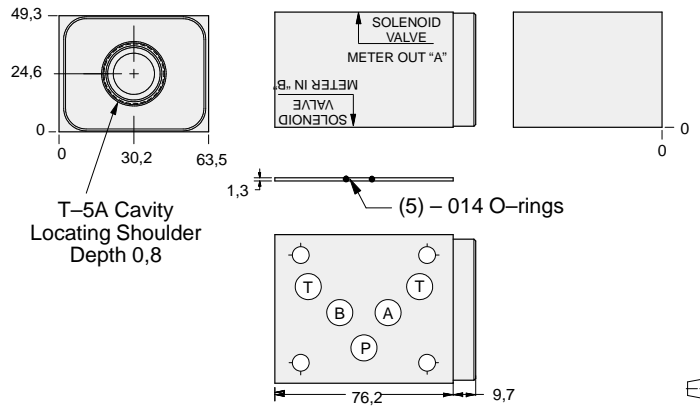


FUNCTION

Meter-Out A

Meter-In B

Flow Control Valves



ALUMINIUM		SG IRON	
Model Code	List Price	Model Code	List Price
DBA		DBA/S	

05 FLOW CONTROL

TYPICAL CARTRIDGES USED WITH BODIES SHOWN ABOVE

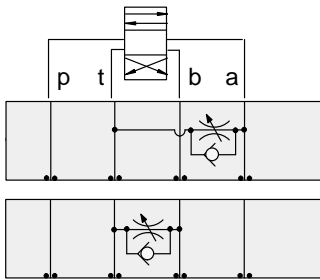
	Fully Adjustable Needle Valve with Reverse Free Flow Check		Fully Adjustable, Pressure-Compensated Flow Control with Reverse Free Flow Check
	NCEB Page 5.16		FDCB Page 5.24
	Fully Adjustable Needle Valve with Reverse Free Flow Check, Low Flow		
	NCEC Page 5.18		
	Fixed Orifice, Pressure-Compensated Flow Control with Reverse Free Flow Check		
	FCDB Page 5.22		
OTHER VALVES:	CNEC		



ISO 05 SANDWICH BODIES



- Aluminium rated to 210 bar and SG Iron rated to 350 bar.
- See page viii for ordering cartridge/body and seals. Pressure ratings, material specifications on page xiv.

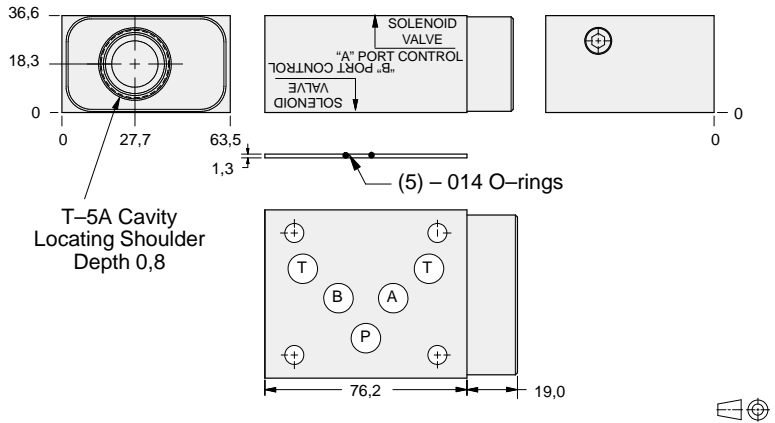


FUNCTION

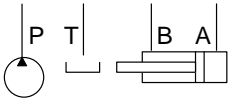
Bleed-Off
A to T

Bleed-Off
B to T

Flow Control Valves



05 FLOW CONTROL



ALUMINIUM		SG IRON	
Model Code	List Price	Model Code	List Price
DBC		DBC/S	

TYPICAL CARTRIDGES USED WITH BODIES SHOWN ABOVE

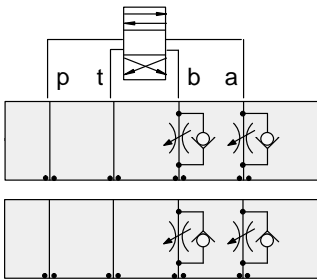
	Fully Adjustable Needle Valve		Fixed Orifice, Pressure-Compensated Flow Control
	NFDC Page 5.12		FXDA Page 5.20
	Fully Adjustable Needle Valve with Reverse Free Flow Check		Fixed Orifice, Pressure-Compensated Flow Control with Reverse Free Flow Check
	NCEB Page 5.16		FCDB Page 5.22
	Fully Adjustable Needle Valve with Reverse Free Flow Check, Low Flow		Fully Adjustable, Pressure-Compensated Flow Control with Reverse Free Flow Check
	NCEC Page 5.18		FDCB Page 5.24
OTHER VALVES:	CNEC		



ISO 05 SANDWICH BODIES



- Aluminium rated to 210 bar and SG Iron rated to 350 bar.
- See page viii for ordering cartridge/body and seals. Pressure ratings, material specifications on page xiv.

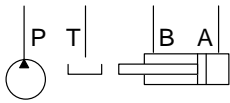
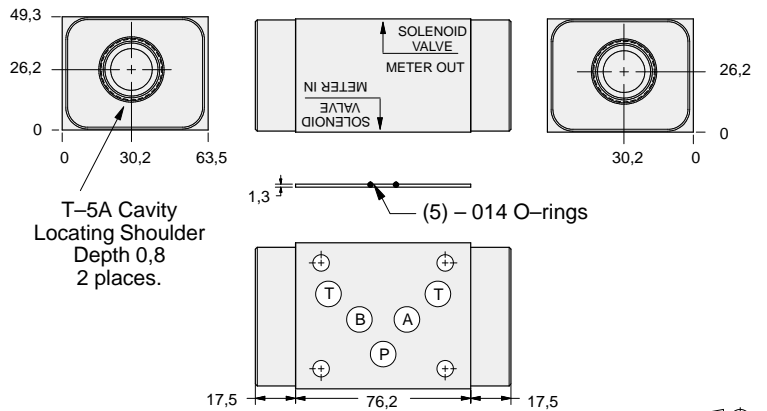


FUNCTION

Meter-In
A and B

Meter-Out
A and B

Flow Control Valves



ALUMINIUM		SG IRON	
Model Code	List Price	Model Code	List Price
DBY		DBY/S	

05 FLOW CONTROL

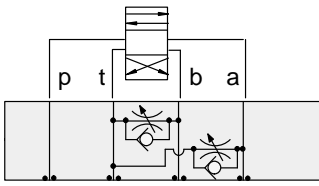
TYPICAL CARTRIDGES USED WITH BODIES SHOWN ABOVE			
	Fully Adjustable Needle Valve with Reverse Free Flow Check NCEB Page 5.16		Fully Adjustable, Pressure-Compensated Flow Control with Reverse Free Flow Check FDCB Page 5.24
	Fully Adjustable Needle Valve with Reverse Free Flow Check, Low Flow NCEC Page 5.18		
	Fixed Orifice, Pressure-Compensated Flow Control with Reverse Free Flow Check FCDB Page 5.22		
	OTHER VALVES: CNEC		



ISO 05 SANDWICH BODIES



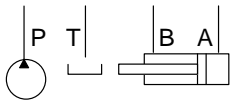
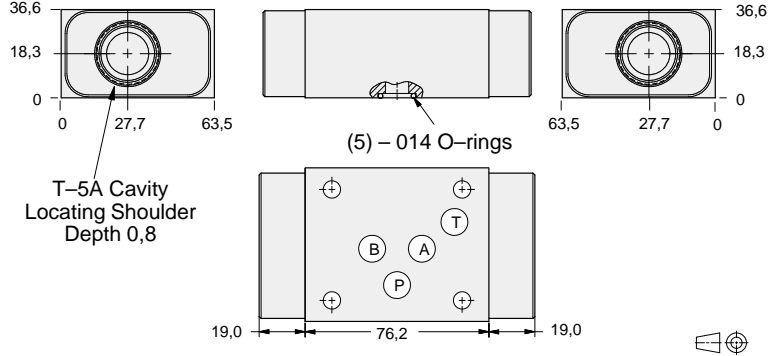
- Aluminium rated to 210 bar and SG Iron rated to 350 bar.
- See page viii for ordering cartridge/body and seals. Pressure ratings, material specifications on page xiv.



FUNCTION

Bleed-Off
A and B to T

Flow Control Valves



ALUMINIUM		SG IRON	
Model Code	List Price	Model Code	List Price
DBX		DBX/S	

05 FLOW CONTROL

TYPICAL CARTRIDGES USED WITH BODIES SHOWN ABOVE

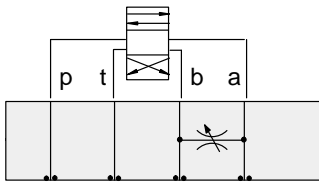
	Fully Adjustable Needle Valve		Fixed Orifice, Pressure-Compensated Flow Control
	NFDC Page 5.12		FXDA Page 5.20
	Fully Adjustable Needle Valve with Reverse Free Flow Check		Fixed Orifice, Pressure-Compensated Flow Control with Reverse Free Flow Check
	NCEB Page 5.16		FCDB Page 5.22
	Fully Adjustable Needle Valve with Reverse Free Flow Check, Low Flow		Fully Adjustable, Pressure-Compensated Flow Control with Reverse Free Flow Check
	NCEC Page 5.18		FDCB Page 5.24
OTHER VALVES:	CNEC		



ISO 05 SANDWICH BODIES



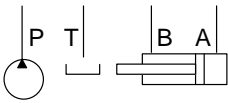
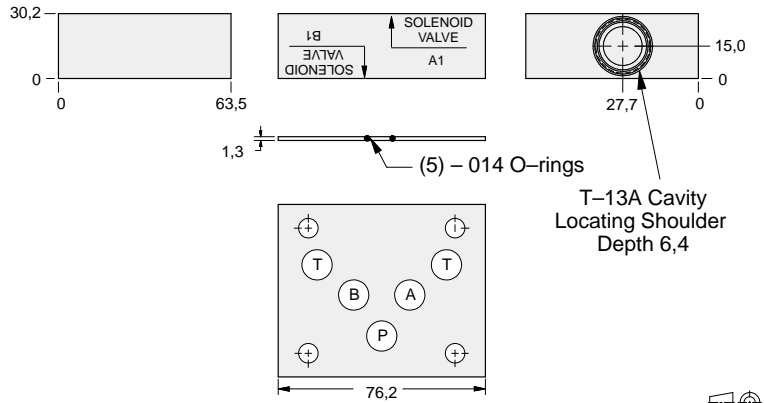
- Aluminium rated to 210 bar and SG Iron rated to 350 bar.
- See page viii for ordering cartridge/body and seals. Pressure ratings, material specifications on page xiv.



FUNCTION

Bleed-Off
A to B and
B to A

Flow Control Valves



ALUMINIUM		SG IRON	
Model Code	List Price	Model Code	List Price
DBS		DBS/S	

05 FLOW CONTROL

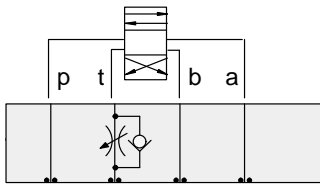
TYPICAL CARTRIDGES USED WITH BODIES SHOWN ABOVE			
	Fully Adjustable Needle Valve		
	NFDC Page 5.12		
OTHER VALVES:	CNEC		



ISO 05 SANDWICH BODIES



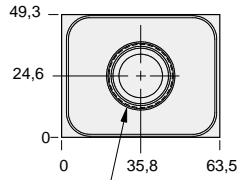
- Aluminium rated to 210 bar and SG Iron rated to 350 bar.
- See page viii for ordering cartridge/body and seals. Pressure ratings, material specifications on page xiv.



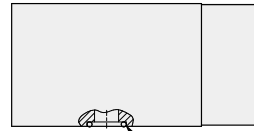
FUNCTION

Meter-Out T

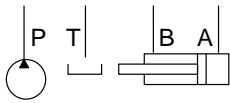
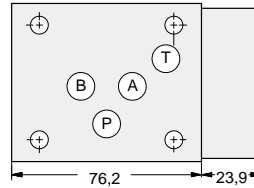
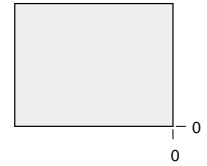
Flow Control Valves



T-5A Cavity
Locating Shoulder
Depth 1,5



(5) - 014 O-rings



ALUMINIUM		SG IRON	
Model Code	List Price	Model Code	List Price
DBT		DBT/S	

05 FLOW CONTROL

TYPICAL CARTRIDGES USED WITH BODIES SHOWN ABOVE

	Fully Adjustable Needle Valve		Fixed Orifice, Pressure-Compensated Flow Control
	NFDC Page 5.12		FXDA Page 5.20
	Fully Adjustable Needle Valve with Reverse Free Flow Check		Fixed Orifice, Pressure-Compensated Flow Control with Reverse Free Flow Check
	NCEB Page 5.16		FCDB Page 5.22
	Fully Adjustable Needle Valve with Reverse Free Flow Check, Low Flow		Fully Adjustable, Pressure-Compensated Flow Control with Reverse Free Flow Check
	NCEC Page 5.18		FDCB Page 5.24
OTHER VALVES:	CNEC		