

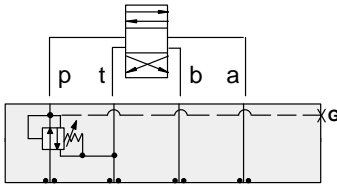


# ISO 05 SANDWICH BODIES



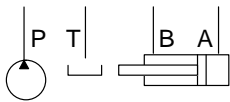
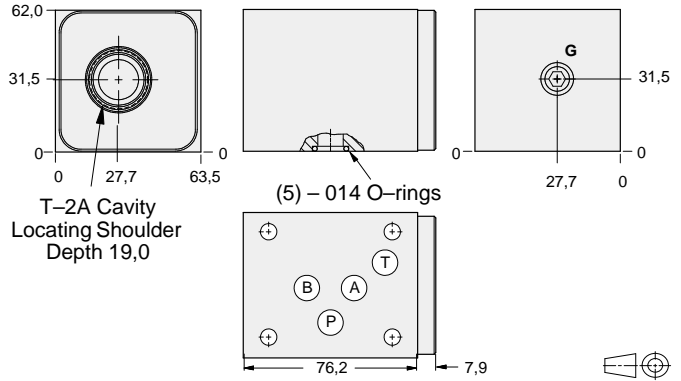
- Aluminium rated to 210 bar and SG Iron rated to 350 bar.
- See page viii for ordering cartridge/body and seals. Pressure ratings, material specifications on page xiv.

## Reducing/Relieving Valves



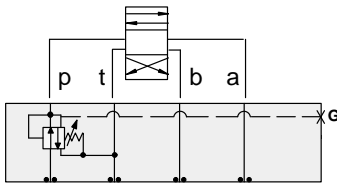
### FUNCTION

On P Tank to T  
Drained to T



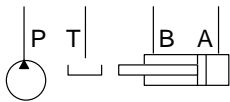
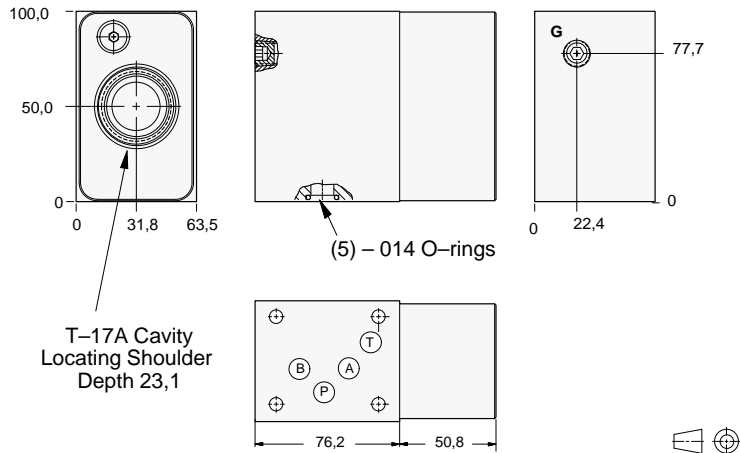
Gauge Port (Plugged)	ALUMINIUM		SG IRON	
	Model Code	List Price	Model Code	List Price
.25 NPTF	<b>BBP</b>		<b>BBP/S</b>	
.25 BSPP	<b>BBP/M</b>		<b>BBP/T</b>	

## Reducing/Relieving Valves



### FUNCTION

On P Tank to T  
Drained to T  
(High Capacity)



Gauge Port (Plugged)	ALUMINIUM		SG IRON	
	Model Code	List Price	Part Number	List Price
.25 NPTF	<b>WCC</b>		<b>WCC/S</b>	
.25 BSPP	<b>WCC/M</b>		<b>WCC/T</b>	

### TYPICAL CARTRIDGES USED WITH BODIES SHOWN ABOVE

	Pilot Operated Reducing/Relieving Valve		
	<b>PP*B Page 3.10, 3.11</b>		
	Air Controlled, Pilot Operated Reducing/Relieving Valve		
	<b>PP*C Page 3.12, 3.13</b>		
<b>OTHER VALVES:</b>			

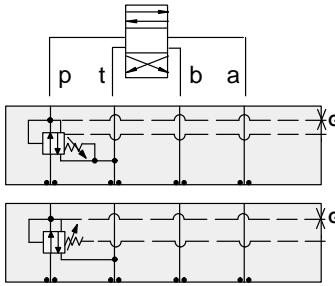


# ISO 05 SANDWICH BODIES



- Aluminium rated to 210 bar and SG Iron rated to 350 bar.
- See page viii for ordering cartridge/body and seals. Pressure ratings, material specifications on page xiv.

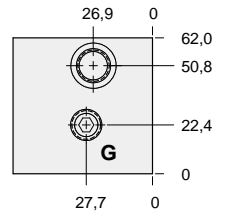
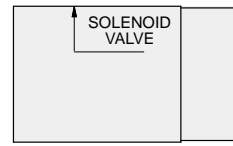
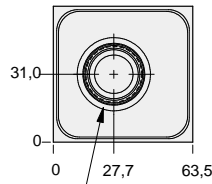
## Reducing/Relieving Valves



### FUNCTION

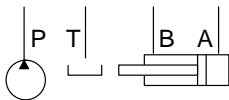
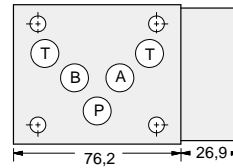
On **P** Tank to **T**  
Vented Externally

On **P** Tank to **T**  
Drained Externally



(5) - O14 O-rings

T-22A Cavity  
Locating Shoulder  
Depth 33,3



Gauge Port (Plugged)	External Port	ALUMINIUM		SG IRON	
		Model Code	List Price	Model Code	List Price
.25 NPTF	SAE-6	<b>NBP</b>		<b>NBP/S</b>	
.25 BSPP	.25 BSPP	<b>NBP/M</b>		<b>NBP/T</b>	



05 REDUCING/RELIEVING

### TYPICAL CARTRIDGES USED WITH BODIES SHOWN ABOVE

	Pilot Operated Reducing/Relieving Valve with Drain Port		
	<b>PVFA Page 3.14</b>		
	Pilot Operated Reducing/Relieving Valve with Vent Port		
	<b>PVFB Page 3.16</b>		
<b>OTHER VALVES:</b>			

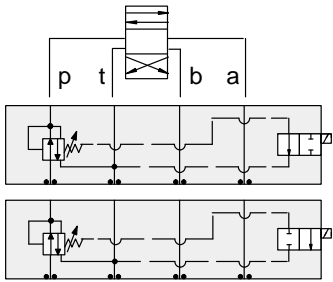


# ISO 05 SANDWICH BODIES



- Aluminium rated to 210 bar and SG Iron rated to 350 bar.
- See page viii for ordering cartridge/body and seals. Pressure ratings, material specifications on page xiv.

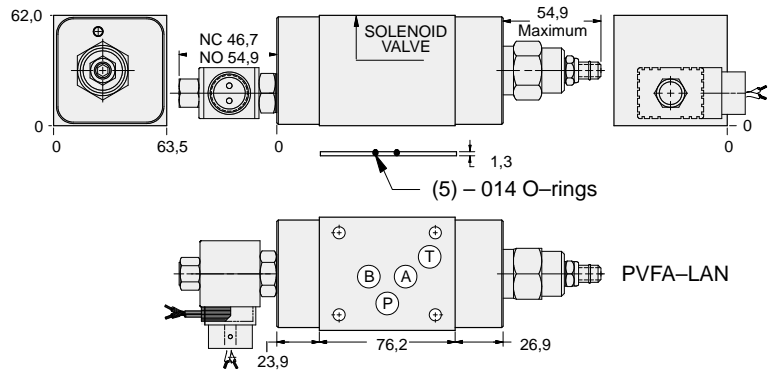
## Reducing/Relieving Valves



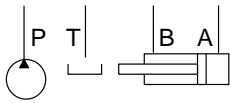
### FUNCTION

On P Tank to T  
N.O. Solenoid  
on Drain \*

On P Tank to T  
N.C. Solenoid  
on Drain \*



Operating pressure is limited to 210 bar.



Solenoid Type	ALUMINIUM		SG IRON	
	Model Code	List Price	Model Code	List Price
N.O.	YPDG-LAN-*A		YPDG-LAN-*A/S	
N.C.	YPDH-LAN-*A		YPDH-LAN-*A/S	

\* Select solenoid connection/voltage option from page 14.16 and add option price to List Price.

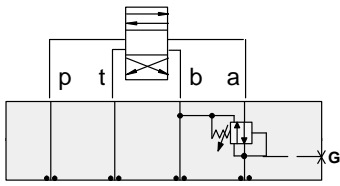
05 REDUCING/RELIEVING



# ISO 05 SANDWICH BODIES



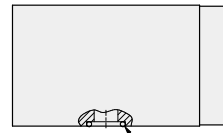
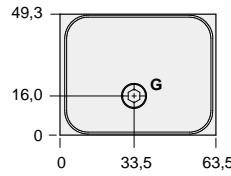
- Aluminium rated to 210 bar and SG Iron rated to 350 bar.
- See page viii for ordering cartridge/body and seals. Pressure ratings, material specifications on page xiv.



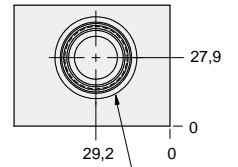
### FUNCTION

On A Tank to B  
Drained to B

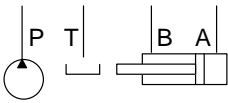
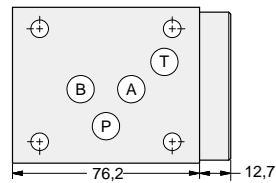
### Reducing/Relieving Valves



(5) - 014 O-rings



T-2A Cavity  
Locating Shoulder  
Depth 29,7



Gauge Port (Plugged)	ALUMINIUM		SG IRON	
	Model Code	List Price	Model Code	List Price
.25 NPTF	<b>BBA</b>		<b>BBA/S</b>	
.25 BSPP	<b>BBA/M</b>		<b>BBA/T</b>	

05 REDUCING/RELIEVING

TYPICAL CARTRIDGES USED WITH BODIES SHOWN ABOVE			
	<i>Pilot Operated Reducing/Relieving Valve</i>		
	<b>PPFB Page 3.10</b>		
<b>OTHER VALVES:</b>			

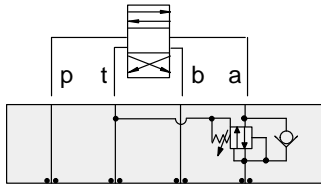


# ISO 05 SANDWICH BODIES



- Aluminium rated to 210 bar and SG Iron rated to 350 bar.
- See page viii for ordering cartridge/body and seals. Pressure ratings, material specifications on page xiv.

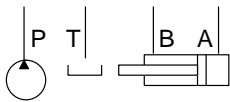
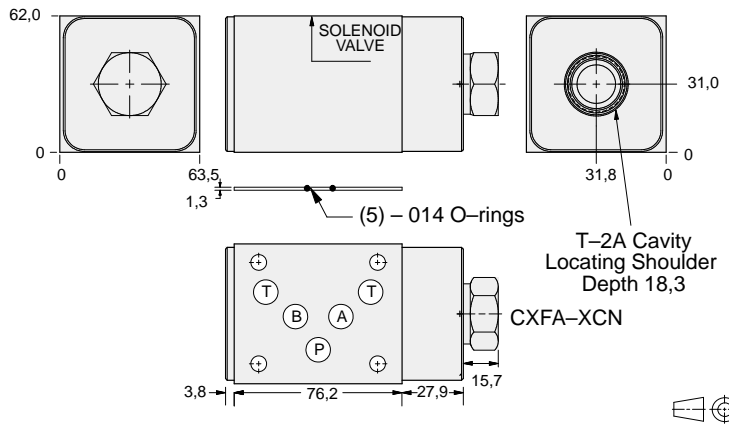
05 REDUCING/RELIEVING



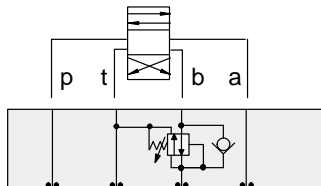
### FUNCTION

On A Tank to T  
 Drained to T  
 Reverse FF Check

### Reducing/Relieving Valves



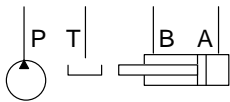
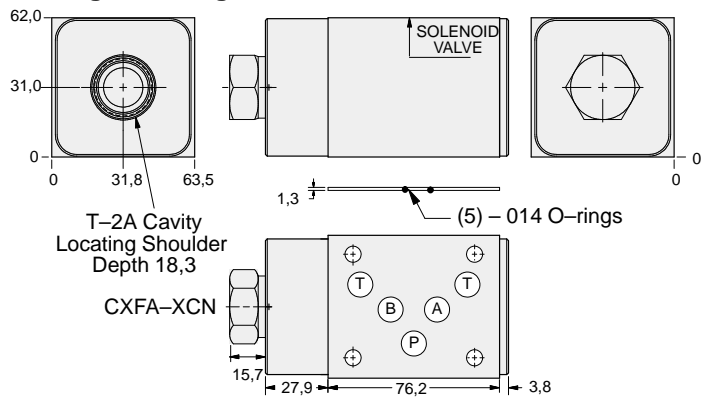
ALUMINIUM		SG IRON	
Model Code	List Price	Model Code	List Price
<b>BB2</b>		<b>BB2/S</b>	



### FUNCTION

On B Tank to T  
 Drained to T  
 Reverse FF Check

### Reducing/Relieving Valves



ALUMINIUM		SG IRON	
Model Code	List Price	Part Number	List Price
<b>BB3</b>		<b>BB3/S</b>	

### TYPICAL CARTRIDGES USED WITH BODIES SHOWN ABOVE

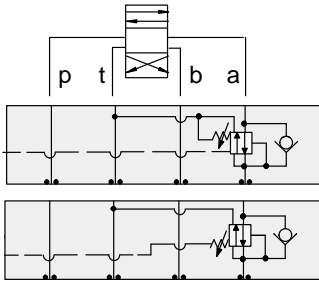
	Pilot Operated Reducing/Relieving Valve		
	<b>PPFB Page 3.10</b>		
	Air Controlled, Pilot Operated Reducing/Relieving Valve		
	<b>PPFC Page 3.12</b>		
<b>OTHER VALVES:</b>			



# ISO 05 SANDWICH BODIES



- Aluminium rated to 210 bar and SG Iron rated to 350 bar.
- See page viii for ordering cartridge/body and seals. Pressure ratings, material specifications on page xiv.

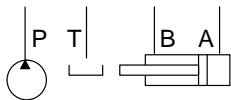
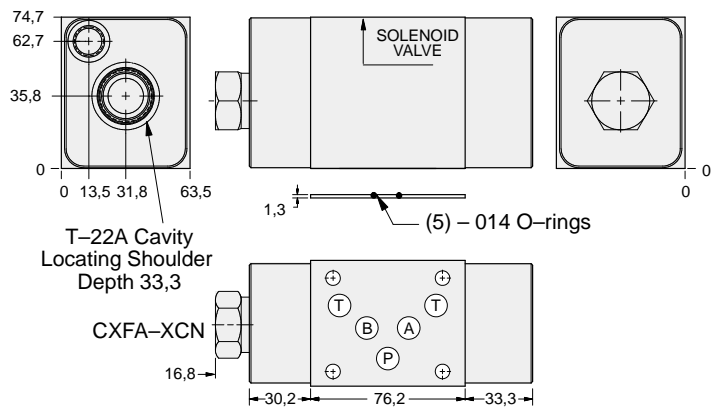


### FUNCTION

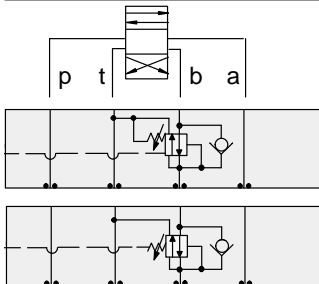
On **A** tank to **T**  
Vented Externally  
Reverse FF Check

On **A** tank to **T**  
Drained Externally  
Reverse FF Check

### Reducing/Relieving Valves



External Port	ALUMINIUM		SG IRON	
	Model Code	List Price	Model Code	List Price
SAE-6	<b>NB2</b>		<b>NB2/S</b>	
.25 BSPP	<b>NB2/M</b>		<b>NB2/T</b>	

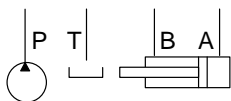
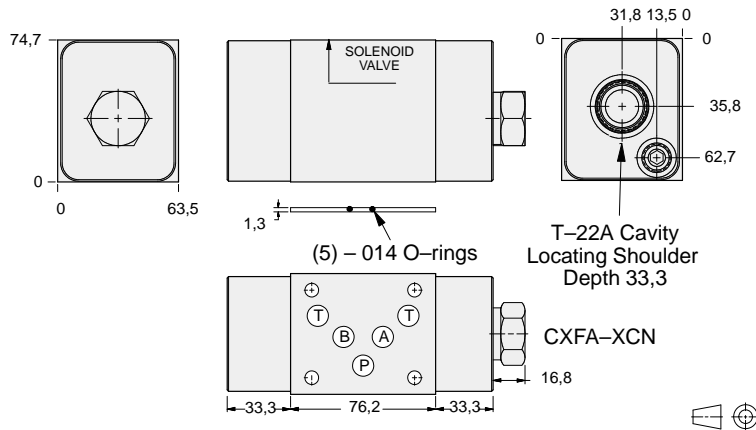


### FUNCTION

On **B** Tank to **T**  
Vented Externally  
Reverse FF Check

On **B** Tank to **T**  
Drained Externally  
Reverse FF Check

### Reducing/Relieving Valves



External Port (Plugged)	ALUMINIUM		SG IRON	
	Model Code	List Price	Part Number	List Price
SAE-6	<b>NB3</b>		<b>NB3/S</b>	
.25 BSPP	<b>NB3/M</b>		<b>NB3/T</b>	

### TYPICAL CARTRIDGES USED WITH BODIES SHOWN ABOVE

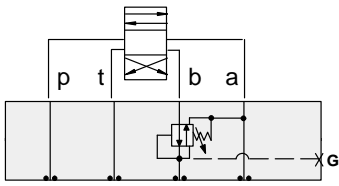
	Pilot Operated Reducing/Relieving Valve with Drain Port		
	<b>PVFA Page 3.14</b>		
	Pilot Operated Reducing/Relieving Valve with Vent Port		
	<b>PVFB Page 3.16</b>		
<b>OTHER VALVES:</b>			



# ISO 05 SANDWICH BODIES



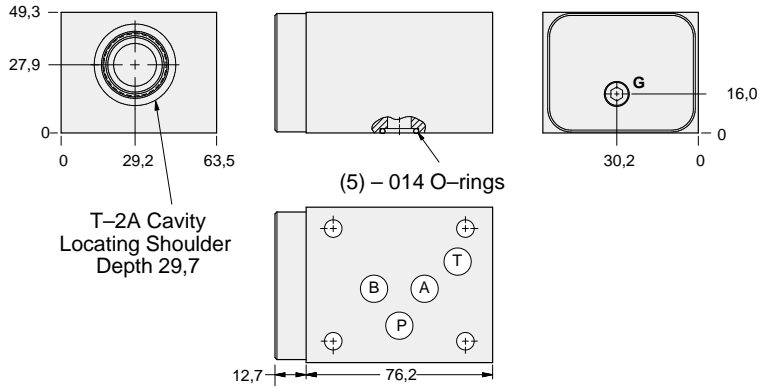
- Aluminium rated to 210 bar and SG Iron rated to 350 bar.
- See page viii for ordering cartridge/body and seals. Pressure ratings, material specifications on page xiv.



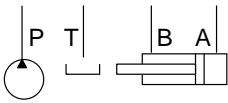
### FUNCTION

On **B** Tank to **A**  
Drained to **A**

### Reducing/Relieving Valves



05 REDUCING/RELIEVING



Gauge Port (Plugged)	ALUMINIUM		SG IRON	
	Model Code	List Price	Model Code	List Price
.25 NPTF	<b>BBB</b>		<b>BBB/S</b>	
.25 BSPP	<b>BBB/M</b>		<b>BBB/T</b>	

### TYPICAL CARTRIDGES USED WITH BODIES SHOWN ABOVE

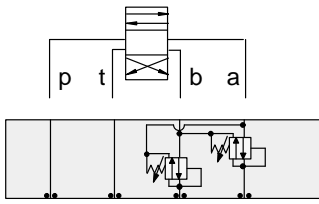
	<i>Pilot Operated Reducing/Relieving Valve</i>		
	<b>PPFB Page 3.10</b>		
<b>OTHER VALVES:</b>			



# ISO 05 SANDWICH BODIES



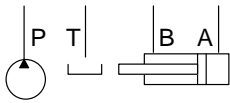
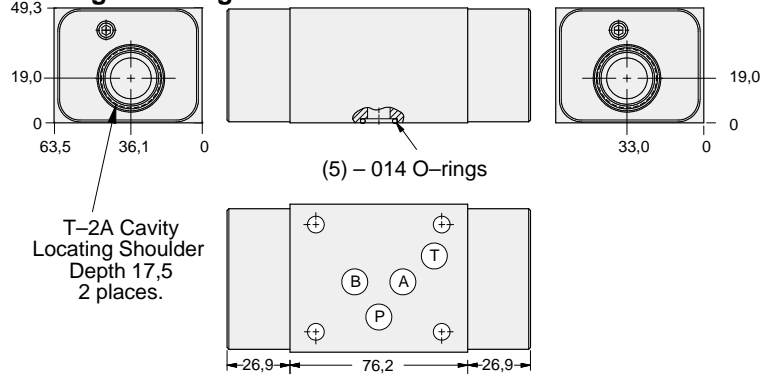
- Aluminium rated to 210 bar and SG Iron rated to 350 bar.
- See page viii for ordering cartridge/body and seals. Pressure ratings, material specifications on page xiv.



### FUNCTION

On **A** and **B**  
Tanks and Drains to  
Opposite Port

### Reducing/Relieving Valves



ALUMINIUM		SG IRON	
<i>Model Code</i>	<i>List Price</i>	<i>Model Code</i>	<i>List Price</i>
<b>BBY</b>		<b>BBY/S</b>	



05 REDUCING/RELIEVING

TYPICAL CARTRIDGES USED WITH BODIES SHOWN ABOVE			
	<i>Pilot Operated Reducing/Relieving Valve</i>		
	<b>PPFB Page 3.10</b>		
<b>OTHER VALVES:</b>			