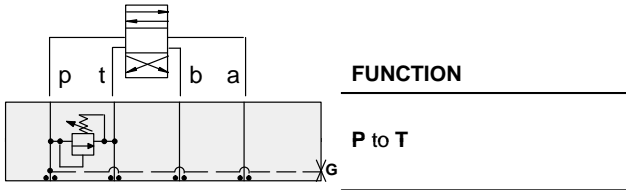




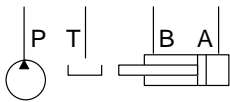
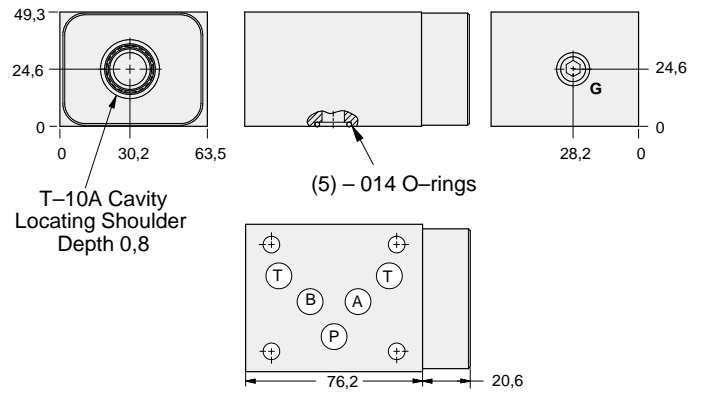
ISO 05 SANDWICH BODIES



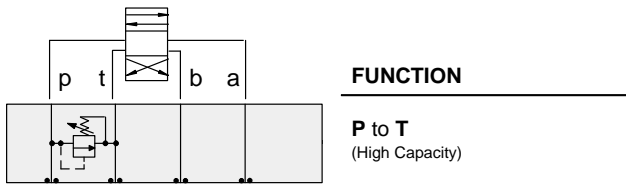
- Aluminium rated to 210 bar and SG Iron rated to 350 bar.
- See page viii for ordering cartridge/body and seals. Pressure ratings, material specifications on page xiv.



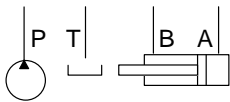
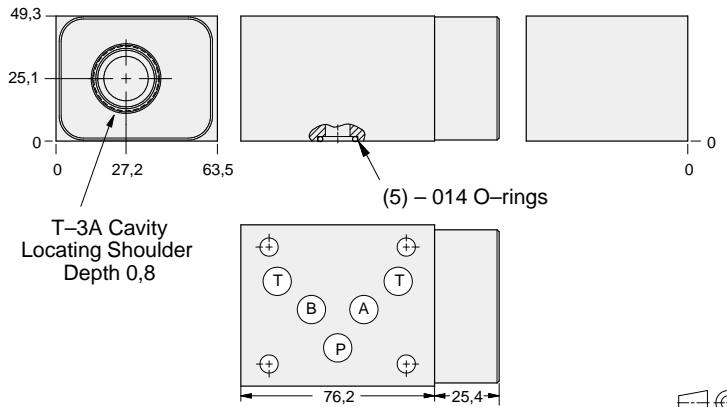
Relief Valves



Gauge Port (Plugged)	ALUMINIUM		SG IRON	
	Model Code	List Price	Model Code	List Price
.25 NPTF	CBE		CBE/S	
.25 BSPP	CBE/M		CBE/T	



Relief Valves



ALUMINIUM		SG IRON	
Model Code	List Price	Part Number	List Price
CBP		CBP/S	

TYPICAL CARTRIDGES USED WITH BODIES SHOWN ABOVE

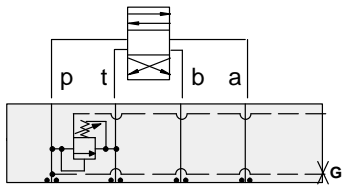
	<i>Pilot Operated Relief Valve</i>		<i>Pilot Operated "Kick-Down" Relief Valve</i>
	RP*C Page 1.06		RQ*B Page 1.12
	<i>Pilot Operated, Rapid Response Relief Valve</i>		<i>Air Controlled, Pilot Operated Relief Valve</i>
	RP*E Page 1.08		RPGD Page 1.14 (use with CBP)
	<i>Direct Acting Relief Valve</i>		
	RD*A Page 1.10		
OTHER VALVES:			



ISO 05 SANDWICH BODIES



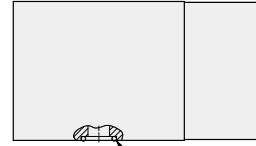
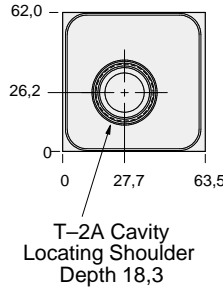
- Aluminium rated to 210 bar and SG Iron rated to 350 bar.
- See page viii for ordering cartridge/body and seals. Pressure ratings, material specifications on page xiv.



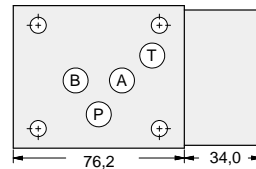
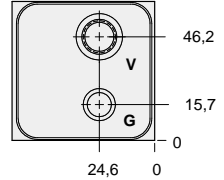
FUNCTION

P to T
Externally Vented

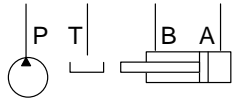
Relief Valves



(5) - 014 O-rings



05 RELIEF



Gauge Port (Plugged)	Vent Port	ALUMINIUM		SG IRON	
		Model Code	List Price	Model Code	List Price
.25 NPTF	SAE-6	BBC		BBC/S	
.25 BSPP	.25 BSPP	BBC/M		BBC/T	

TYPICAL CARTRIDGES USED WITH BODIES SHOWN ABOVE

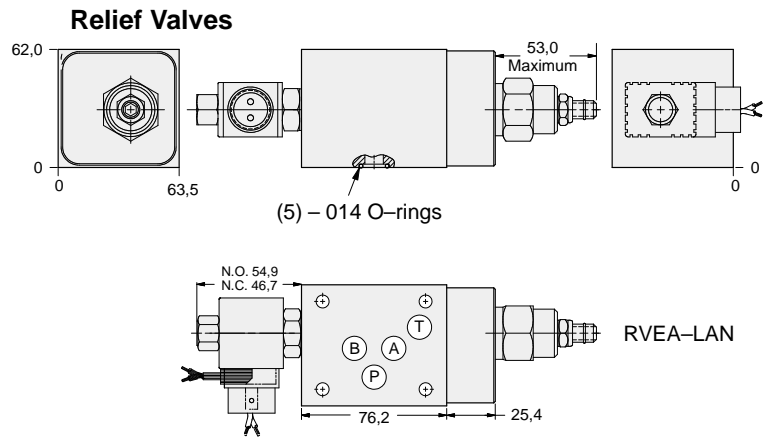
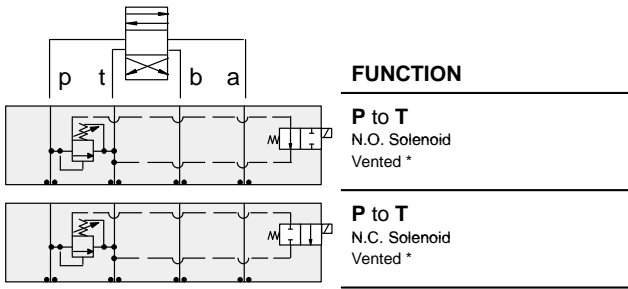
	<i>Pilot Operated Vented Relief Valve</i>		
	RVEA Page 1.18		
OTHER VALVES:			



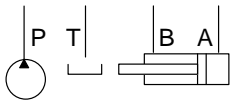
ISO 05 SANDWICH BODIES



- Aluminium rated to 210 bar and SG Iron rated to 350 bar.
- See page viii for ordering cartridge/body and seals. Pressure ratings, material specifications on page xiv.



Operating pressure is limited to 210 bar.



Solenoid Type	ALUMINUM		DUCTILE IRON	
	Model Code	List Price	Model Code	List Price
N.O.	YREO-LAN-*A		YREO-LAN-*A/S	
N.C.	YREP-LAN-*A		YREP-LAN-*A/S	

* Select solenoid connection/voltage option from page 14.16 and add option price to List Price.

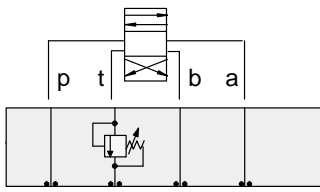


ISO 05 SANDWICH BODIES



- Aluminium rated to 210 bar and SG Iron rated to 350 bar.
- See page viii for ordering cartridge/body and seals. Pressure ratings, material specifications on page xiv.

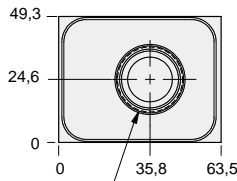
05 RELIEF



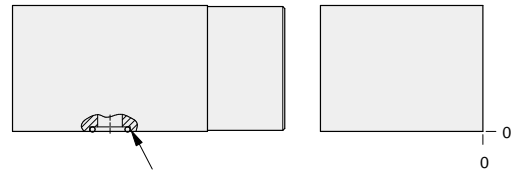
FUNCTION

Out of T
(High Capacity)

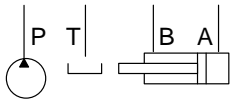
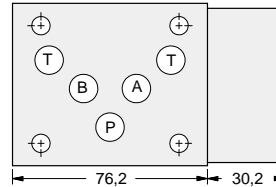
Relief Valves



T-3A Cavity
Locating Shoulder
Depth 1,5



(5) - 014 O-rings



ALUMINIUM		SG IRON	
<i>Model Code</i>	<i>List Price</i>	<i>Part Number</i>	<i>List Price</i>
CBT		CBT/S	

TYPICAL CARTRIDGES USED WITH BODIES SHOWN ABOVE

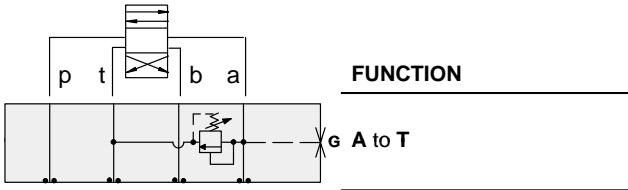
	<i>Pilot Operated Relief Valve</i>		<i>Pilot Operated "Kick-Down" Relief Valve</i>
	RPGC Page 1.06		RQGB Page 1.12
	<i>Pilot Operated, Rapid Response Relief Valve</i>		<i>Air Controlled, Pilot Operated Relief Valve</i>
	RPGE Page 1.08		RPGD Page 1.14
	<i>Direct Acting Relief Valve</i>		
	RDFA Page 1.10		
OTHER VALVES:			



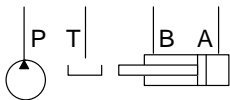
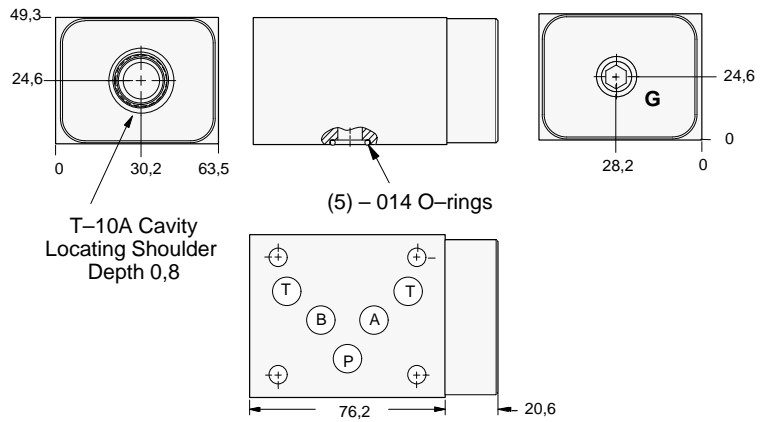
ISO 05 SANDWICH BODIES



- Aluminium rated to 210 bar and SG Iron rated to 350 bar.
- See page viii for ordering cartridge/body and seals. Pressure ratings, material specifications on page xiv.

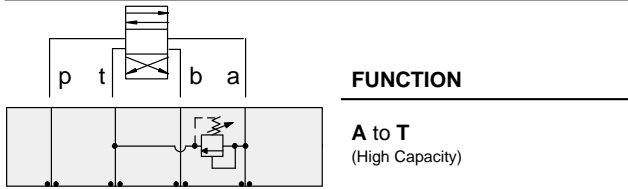


Relief Valves

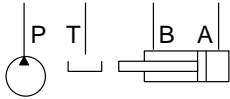
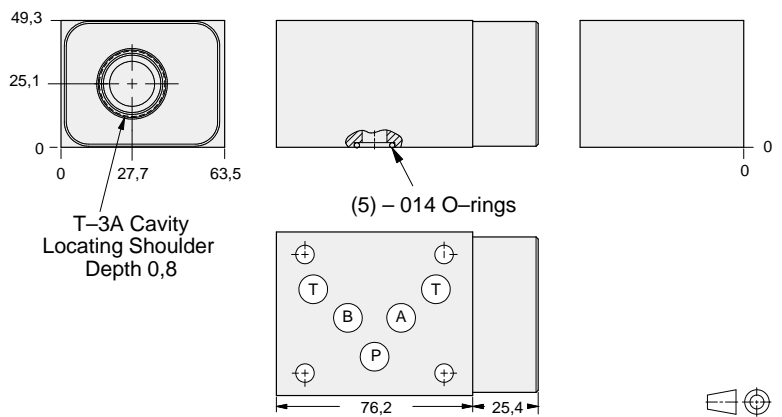


Gauge Port (Plugged)	ALUMINIUM		SG IRON	
	Model Code	List Price	Model Code	List Price
.25 NPTF	CBF		CBF/S	
.25 BSPP	CBF/M		CBF/T	

05 RELIEF



Relief Valves



ALUMINIUM		SG IRON	
Model Code	List Price	Part Number	List Price
CBA		CBA/S	

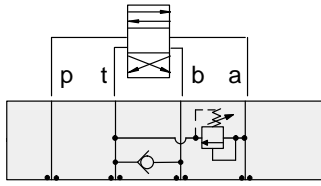
TYPICAL CARTRIDGES USED WITH BODIES SHOWN ABOVE			
	<i>Pilot Operated Relief Valve</i>		<i>Pilot Operated "Kick-Down" Relief Valve</i>
	RP*C Page 1.06		RQ*B Page 1.12
	<i>Pilot Operated, Rapid Response Relief Valve</i>		<i>Air Controlled, Pilot Operated Relief Valve</i>
	RP*E Page 1.08		RPGD Page 1.14 (use with CBA)
	<i>Direct Acting Relief Valve</i>		
	RD*A Page 1.10		
OTHER VALVES:			



ISO 05 SANDWICH BODIES



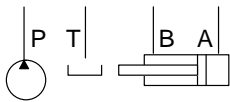
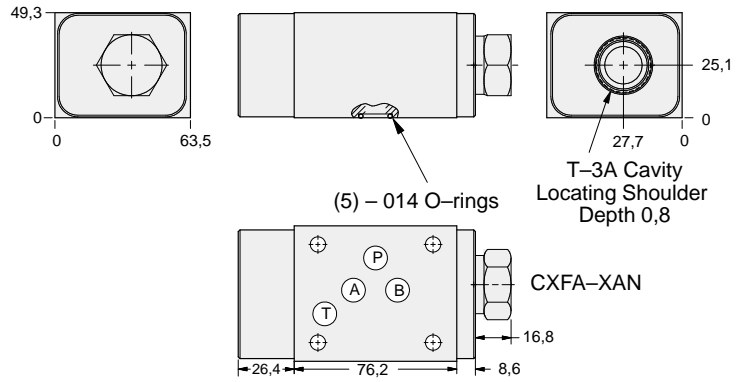
- Aluminium rated to 210 bar and SG Iron rated to 350 bar.
- See page viii for ordering cartridge/body and seals. Pressure ratings, material specifications on page xiv.



FUNCTION

A to T
FF Check T to B

Relief Valves



ALUMINIUM		SG IRON	
Model Code	List Price	Model Code	List Price
CB2		CB2/S	

05 RELIEF

TYPICAL CARTRIDGES USED WITH BODIES SHOWN ABOVE

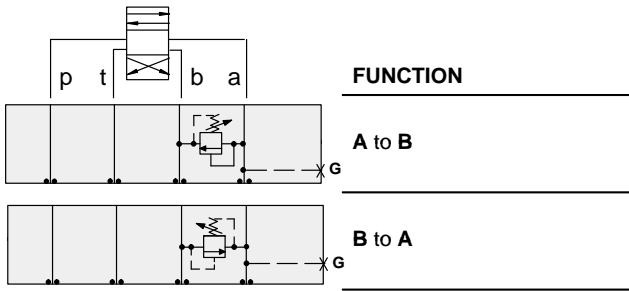
	<i>Pilot Operated Relief Valve</i>		<i>Pilot Operated "Kick-Down" Relief Valve</i>
	RPGC Page 1.06		RQGB Page 1.12
	<i>Pilot Operated, Rapid Response Relief Valve</i>		<i>Air Controlled, Pilot Operated Relief Valve</i>
	RPGE Page 1.08		RPGD Page 1.14
	<i>Direct Acting Relief Valve</i>		
	RDFA Page 1.10		
OTHER VALVES:			



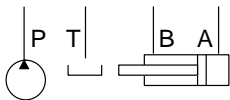
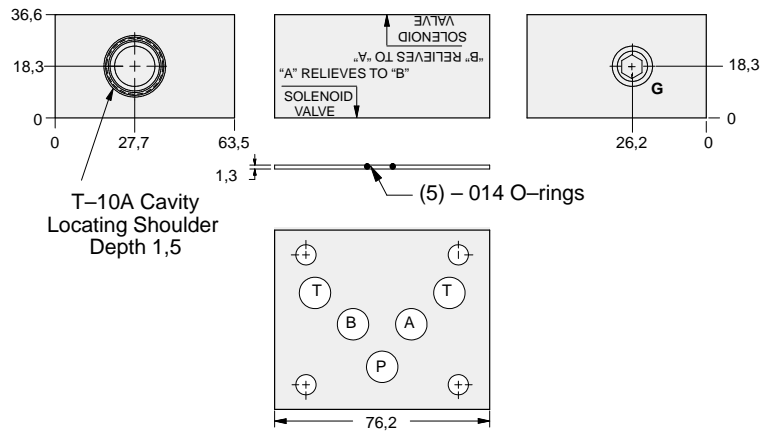
ISO 05 SANDWICH BODIES



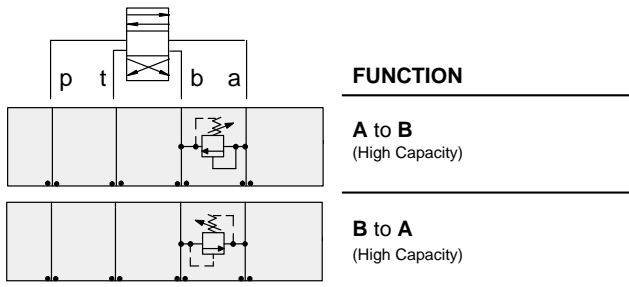
- Aluminium rated to 210 bar and SG Iron rated to 350 bar.
- See page viii for ordering cartridge/body and seals. Pressure ratings, material specifications on page xiv.



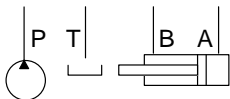
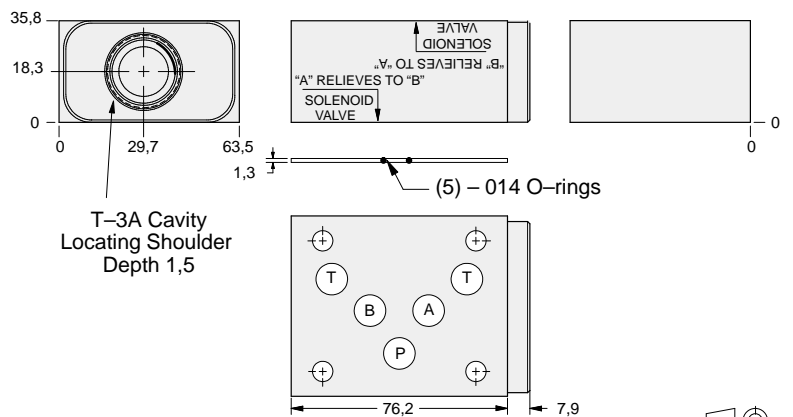
Relief Valves



Gauge Port (Plugged)	ALUMINIUM		SG IRON	
	Model Code	List Price	Model Code	List Price
.25 NPTF	CBH		CBH/S	
.25 BSPP	CBH/M		CBH/T	



Relief Valves



ALUMINIUM		SG IRON	
Model Code	List Price	Part Number	List Price
CBC		CBC/S	

TYPICAL CARTRIDGES USED WITH BODIES SHOWN ABOVE

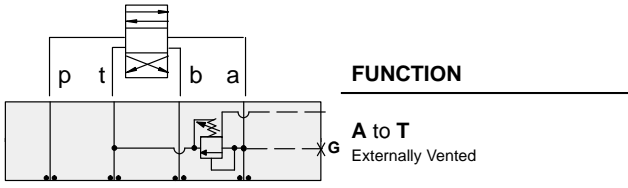
	<i>Pilot Operated Relief Valve</i>		<i>Pilot Operated "Kick-Down" Relief Valve</i>
	RP*C Page 1.06		RQ*B Page 1.12
	<i>Pilot Operated, Rapid Response Relief Valve</i>		<i>Air Controlled, Pilot Operated Relief Valve</i>
	RP*E Page 1.08		RPGD Page 1.14 (use with CBC)
	<i>Direct Acting Relief Valve</i>		
	RD*A Page 1.10		



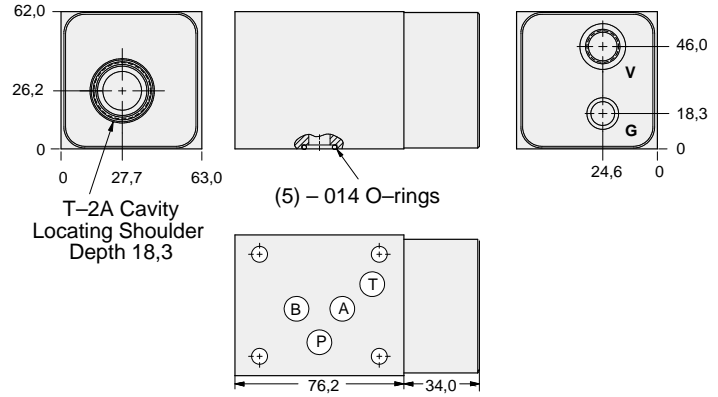
ISO 05 SANDWICH BODIES



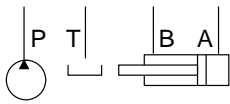
- Aluminium rated to 210 bar and SG Iron rated to 350 bar.
- See page viii for ordering cartridge/body and seals. Pressure ratings, material specifications on page xiv.



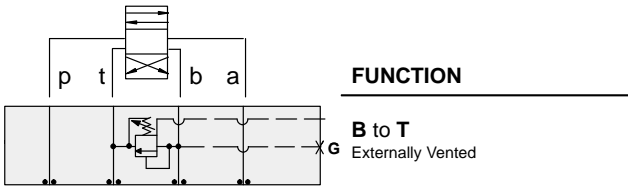
Relief Valves



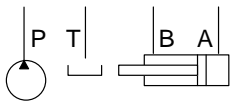
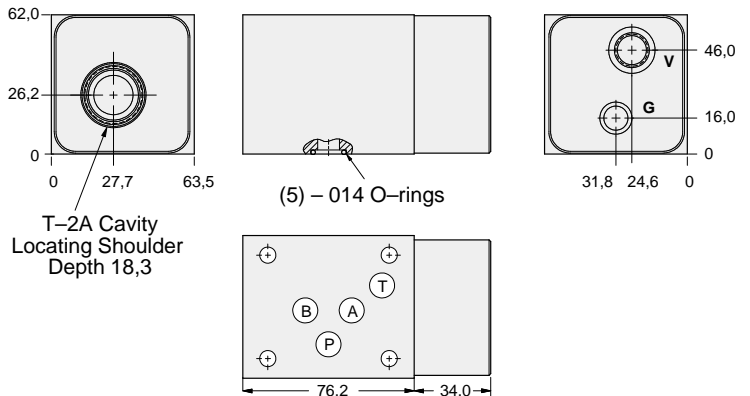
05 RELIEF



Gauge Port (Plugged)	Vent Port	ALUMINIUM		SG IRON	
		Model Code	List Price	Model Code	List Price
.25 NPTF	SAE-6	BBD		BBD/S	
.25 BSPP	.25 BSPP	BBD/M		BBD/T	



Relief Valves

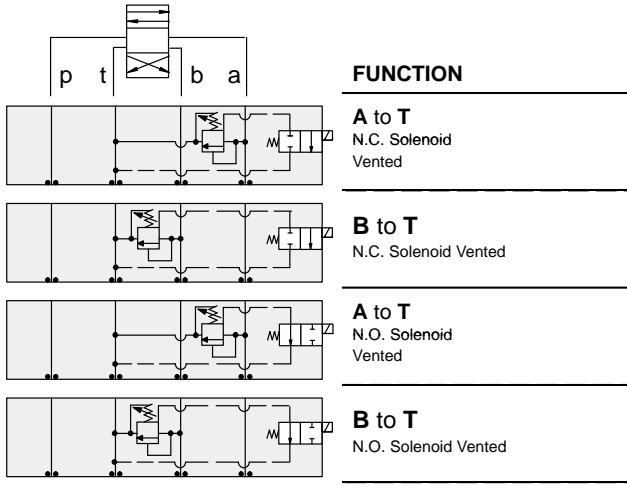


Gauge Port (Plugged)	Vent Port	ALUMINIUM		SG IRON	
		Model Code	List Price	Part Number	List Price
.25 NPTF	SAE-6	BBE		BBE/S	
.25 BSPP	.25 BSPP	BBE/M		BBE/T	

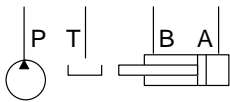
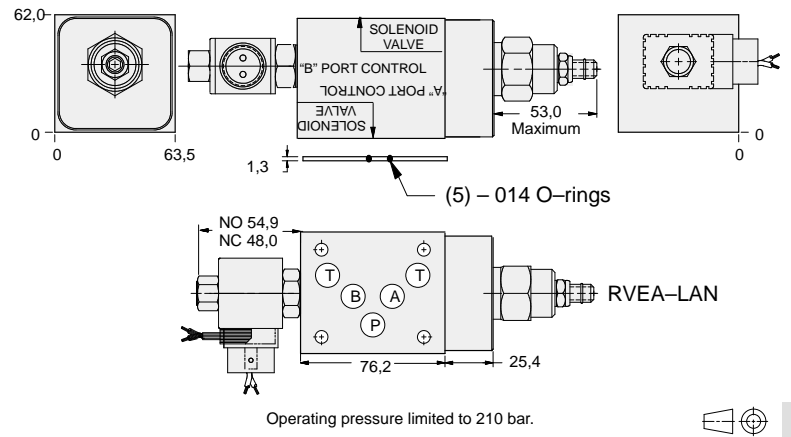
TYPICAL CARTRIDGES USED WITH BODIES SHOWN ABOVE

Cartridge Diagram	Cartridge Name	Page Reference
	Pilot Operated Vented Relief Valve	RVEA Page 1.18
OTHER VALVES:		

- Aluminium rated to 210 bar and SG Iron rated to 350 bar.
- See page viii for ordering cartridge/body and seals. Pressure ratings, material specifications on page xiv.



Relief Valves



Solenoid Type	ALUMINIUM		SG IRON	
	Model Code	List Price	Model Code	List Price
N.C.	YRET-LAN-*A		YRET-LAN-*A/S	
N.O.	YREU-LAN-A		YREU-LAN-A/S	

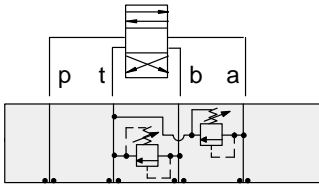
* Select solenoid connection/voltage option from page 14.16 and add option price to List Price.



ISO 05 SANDWICH BODIES



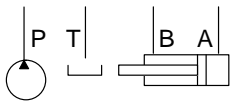
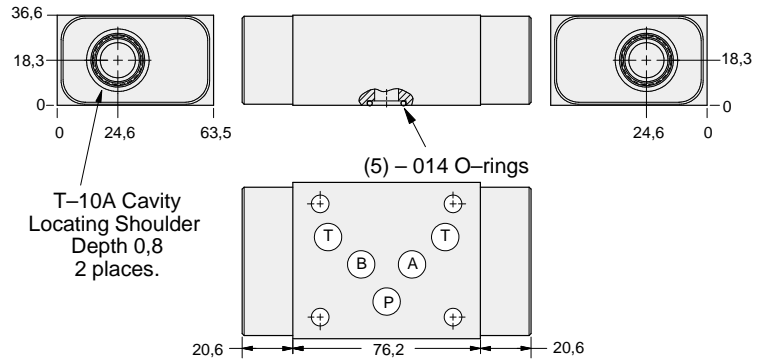
- Aluminium rated to 210 bar and SG Iron rated to 350 bar.
- See page viii for ordering cartridge/body and seals. Pressure ratings, material specifications on page xiv.



FUNCTION

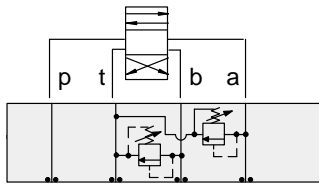
A and B to T

Relief Valves



ALUMINIUM		SG IRON	
<i>Model Code</i>	<i>List Price</i>	<i>Model Code</i>	<i>List Price</i>
CBD		CBD/S	

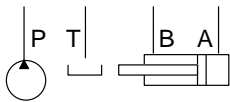
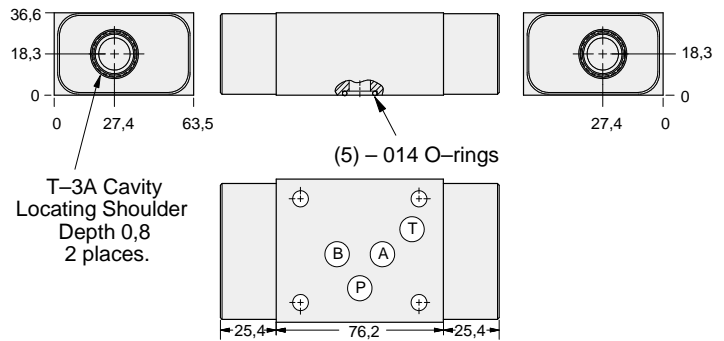
05 RELIEF



FUNCTION

A and B to T
(High Capacity)

Relief Valves



ALUMINIUM		SG IRON	
<i>Model Code</i>	<i>List Price</i>	<i>Part Number</i>	<i>List Price</i>
CBX		CBX/S	

TYPICAL CARTRIDGES USED WITH BODIES SHOWN ABOVE

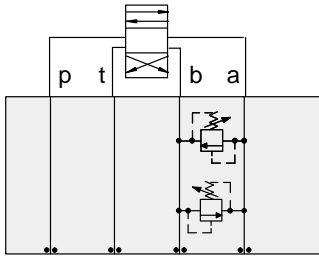
	<i>Pilot Operated Relief Valve</i>		<i>Pilot Operated "Kick-Down" Relief Valve</i>
	RP*C Page 1.06		RQ*B Page 1.12
	<i>Pilot Operated, Rapid Response Relief Valve</i>		<i>Air Controlled, Pilot Operated Relief Valve</i>
	RP*E Page 1.08		RPGD Page 1.14 (use with CBX)
	<i>Direct Acting Relief Valve</i>		
	RD*A Page 1.10		



ISO 05 SANDWICH BODIES



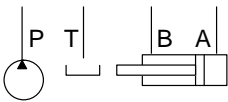
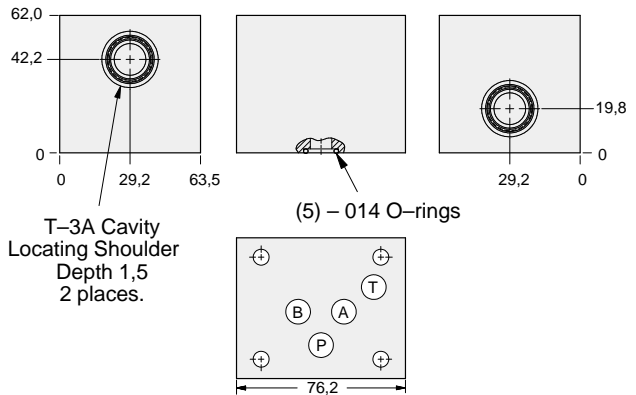
- Aluminium rated to 210 bar and SG Iron rated to 350 bar.
- See page viii for ordering cartridge/body and seals. Pressure ratings, material specifications on page xiv.



FUNCTION

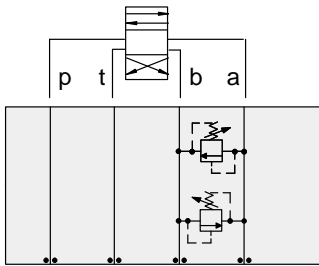
**A to B and
B to A**
(Cross Port)

Relief Valves



ALUMINIUM		SG IRON	
Model Code	List Price	Model Code	List Price
CBI		CB/S	

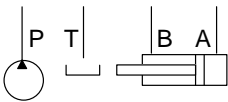
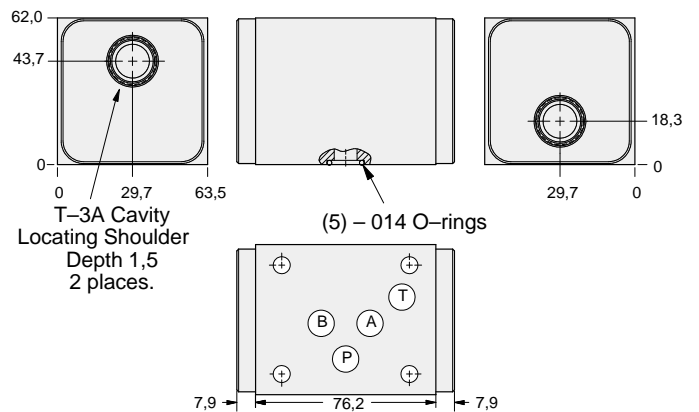
05 RELIEF



FUNCTION

**A to B and
B to A**
(High Capacity)
(Cross Port)

Relief Valves



ALUMINIUM		SG IRON	
Model Code	List Price	Part Number	List Price
CBY		CBY/S	

TYPICAL CARTRIDGES USED WITH BODIES SHOWN ABOVE

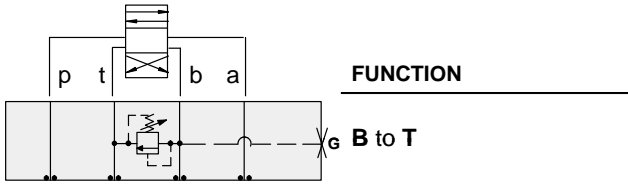
	<i>Pilot Operated Relief Valve</i>		<i>Pilot Operated "Kick-Down" Relief Valve</i>
	RP*C Page 1.06		RQ*B Page 1.12
	<i>Pilot Operated, Rapid Response Relief Valve</i>		<i>Air Controlled, Pilot Operated Relief Valve</i>
	RP*E Page 1.08		RPGD Page 1.14 (use with CBY)
	<i>Direct Acting Relief Valve</i>		
	RD*A Page 1.10		



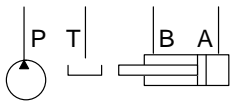
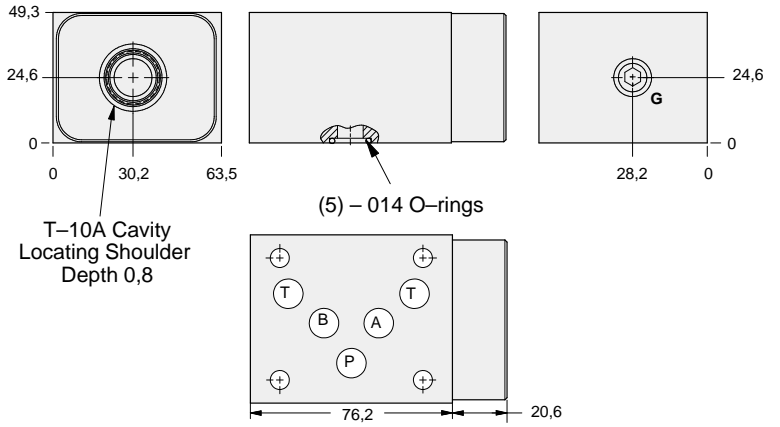
ISO 05 SANDWICH BODIES



- Aluminium rated to 210 bar and SG Iron rated to 350 bar.
- See page viii for ordering cartridge/body and seals. Pressure ratings, material specifications on page xiv.

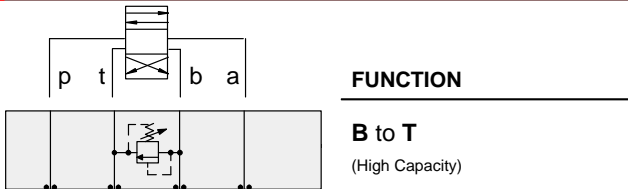


Relief Valves

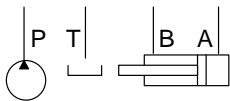
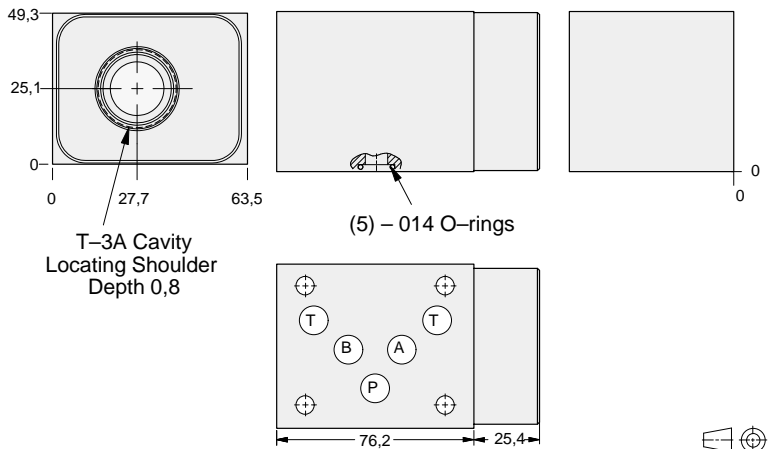


Gauge Port (Plugged)	ALUMINIUM		SG IRON	
	Model Code	List Price	Model Code	List Price
.25 NPTF	CBG		CBG/S	
.25 BSPP	CBG/M		CBG/T	

05 RELIEF



Relief Valves



ALUMINIUM		SG IRON	
Model Code	List Price	Part Number	List Price
CBB		CBB/S	

TYPICAL CARTRIDGES USED WITH BODIES SHOWN ABOVE

	Pilot Operated Relief Valve		Pilot Operated "Kick-Down" Relief Valve
	RP*C Page 1.06		RQ*B Page 1.12
	Pilot Operated, Rapid Response Relief Valve		Air Controlled, Pilot Operated Relief Valve
	RP*E Page 1.08		RP*D Page 1.14 (use with CBB)
	Direct Acting Relief Valve		
	RD*A Page 1.10		