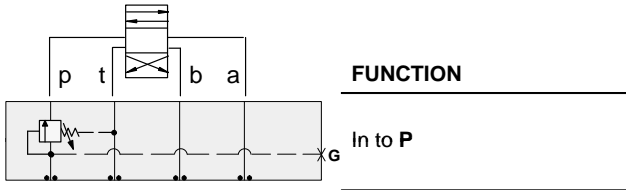




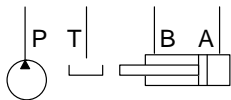
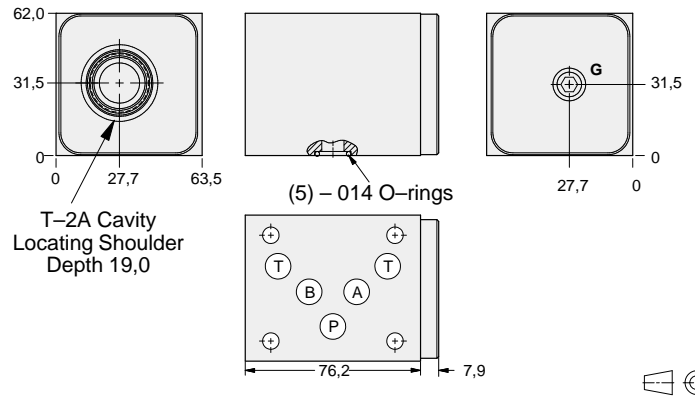
# ISO 05 SANDWICH BODIES



- Aluminium rated to 210 bar and SG Iron rated to 350 bar.
- See page viii for ordering cartridge/body and seals. Pressure ratings, material specifications on page xiv.



## Sequence Valves



Gauge Port (Plugged)	ALUMINIUM		SG IRON	
	Model Code	List Price	Model Code	List Price
.25 NPTF	<b>BBW</b>		<b>BBW/S</b>	
.25 BSPP	<b>BBW/M</b>		<b>BBW/T</b>	

05 SEQUENCE

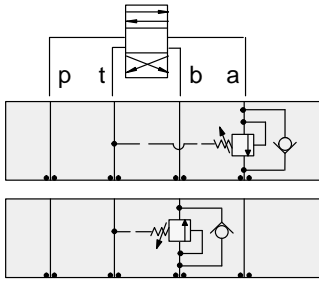
TYPICAL CARTRIDGES USED WITH BODIES SHOWN ABOVE			
	<i>Pilot Operated Sequence Valve</i>		
	<b>RSFC Page 2.06</b>		
	<i>Pilot Operated "Kick-Down" Sequence Valve</i>		
	<b>SQFB Page 2.08</b>		
	<i>Air Controlled, Pilot Operated Sequence Valve</i>		
	<b>RSFE Page 2.10</b>		
<b>OTHER VALVES:</b>	<b>SCEA</b>		



# ISO 05 SANDWICH BODIES



- Aluminium rated to 210 bar and SG Iron rated to 350 bar.
- See page viii for ordering cartridge/body and seals. Pressure ratings, material specifications on page xiv.

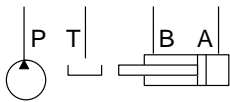
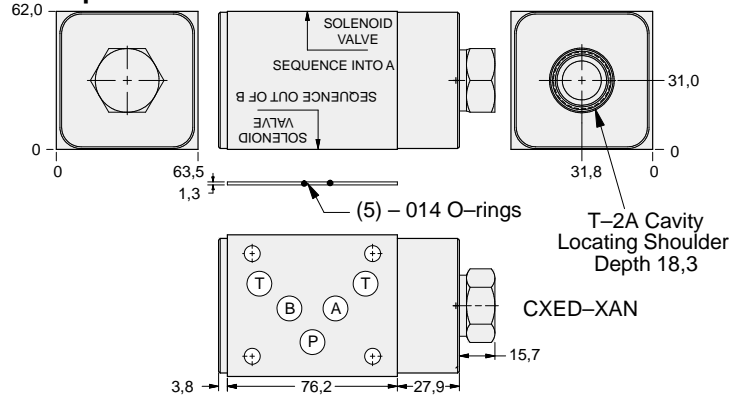


### FUNCTION

**In to A**  
Reverse FF Check

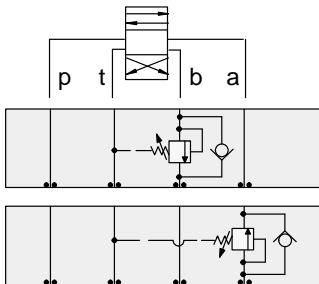
**Out of B**  
Reverse FF Check

### Sequence Valves



ALUMINIUM		SG IRON	
Model Code	List Price	Model Code	List Price
<b>BB4</b>		<b>BB4/S</b>	

05 SEQUENCE

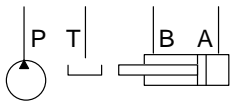
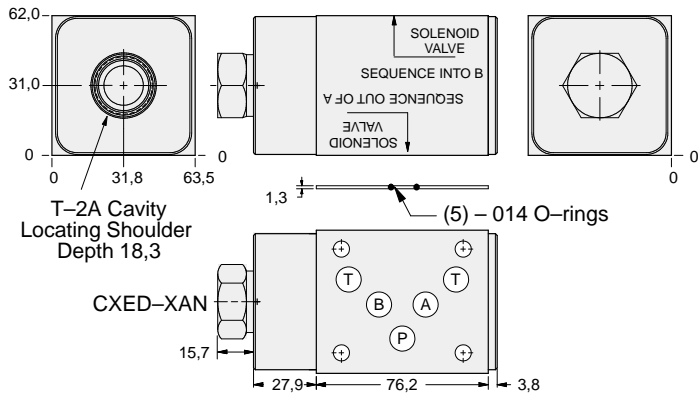


### FUNCTION

**In to B**  
Reverse FF Check

**Out of A**  
Reverse FF Check

### Sequence Valves



ALUMINIUM		SG IRON	
Model Code	List Price	Part Number	List Price
<b>BB5</b>		<b>BB5/S</b>	

### TYPICAL CARTRIDGES USED WITH BODIES SHOWN ABOVE

	Pilot Operated Sequence Valve		
	<b>RSFC Page 2.06</b>		
	Pilot Operated "Kick-Down" Sequence Valve		
	<b>SQFB Page 2.08</b>		
	Air Controlled, Pilot Operated Sequence Valve		
	<b>RSFE Page 2.10</b>		
<b>OTHER VALVES:</b>			