

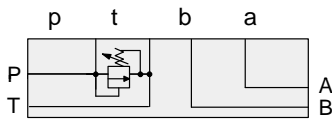


ISO 05 SANDWICH BODIES



- Aluminium rated to 210 bar and SG Iron rated to 350 bar.
- See page viii for ordering cartridge/body and seals. Pressure ratings, material specifications on page xiv.

Side Ported Subplates



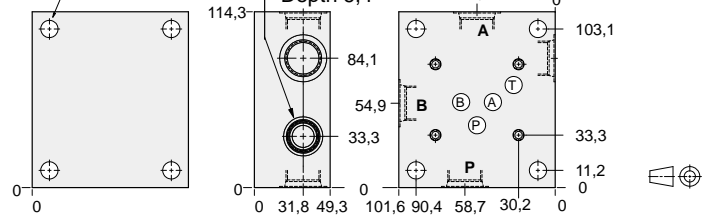
FUNCTION

Relief P to T

Mounting Holes:
11,2 diameter through hole.
4 places.

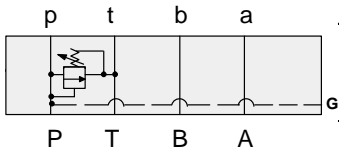
T-10A Cavity
Locating Shoulder
Depth 6,4

4 Interface Bolt Holes
x 12,7 deep
Inch: .250-20 UNC
Metric: M6 x 1.0



Bolt Hole Interface	Ports A,B,P,T	ALUMINIUM		SG IRON	
		Model Code	List Price	Model Code	List Price
Inch	.50 NPTF	FSC		FSC/S	
Inch	SAE-10	FSK		FSK/S	
Metric	.50 BSPP	FSV		FSV/S	

Rear Ported Subplates



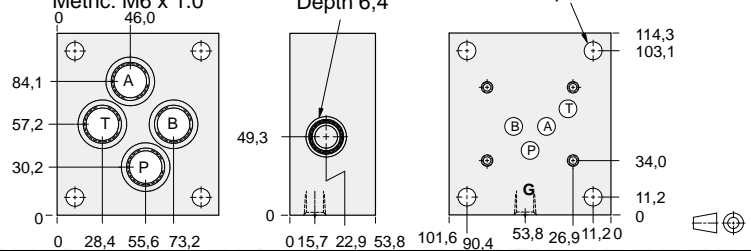
FUNCTION

Relief P to T

4 Interface Bolt Holes
x 12,7 deep
Inch: .250-20 UNC
Metric: M6 x 1.0

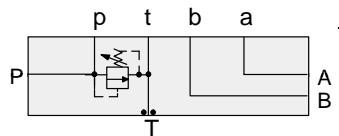
T-10A Cavity
Locating Shoulder
Depth 6,4

Mounting Holes:
11,2 diameter through hole.
4 places.



Bolt Hole Interface	Gauge Port	Ports A,B,P,T	ALUMINIUM		SG IRON	
			Model Code	List Price	Model Code	List Price
Inch	.25 NPTF	.50 NPTF	FRC		FRC/S	
Inch	.25 NPTF	SAE-10	FRK		FRK/S	
Metric	.25 BSPP	.50 BSPP	FRV		FRV/S	

Side Ported Subplates with Gasket Mount Tank Port



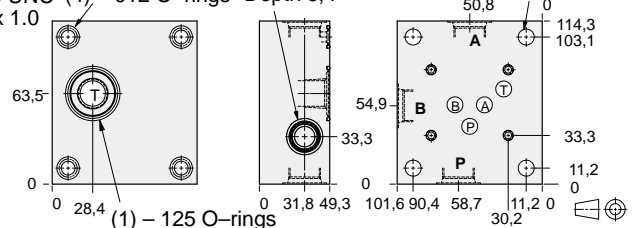
FUNCTION

Relief P to T

4 Interface Bolt Holes
x 12,7 deep
Inch: .250-20 UNC (4) - O12 O-rings
Metric: M6 x 1.0

T-10A Cavity
Locating Shoulder
Depth 6,4

Mounting Holes (Sealed):
11,2 diameter through hole.
4 places.



Bolt Hole Interface	Ports A,B,P	ALUMINIUM		SG IRON	
		Model Code	List Price	Model Code	List Price
Inch	.50 NPTF	FTC		FTC/S	
Inch	SAE-10	FTK		FTK/S	
Metric	.50 BSPP	FTV		FTV/S	

TYPICAL CARTRIDGES USED WITH BODIES SHOWN ABOVE

	Pilot Operated Relief Valve		Pilot Operated "Kick-Down" Relief Valve
	RPEC Page 1.06		RQEB Page 1.12
	Pilot Operated, Rapid Response Relief Valve		Direct Acting Relief Valve
	RPEE Page 1.08		RDDA Page 1.10



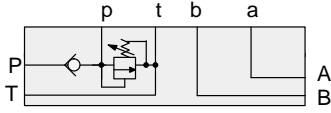
ISO 05 SANDWICH BODIES



- Aluminium rated to 210 bar and SG Iron rated to 350 bar.
- See page viii for ordering cartridge/body and seals. Pressure ratings, material specifications on page xiv.

Side Ported Subplates

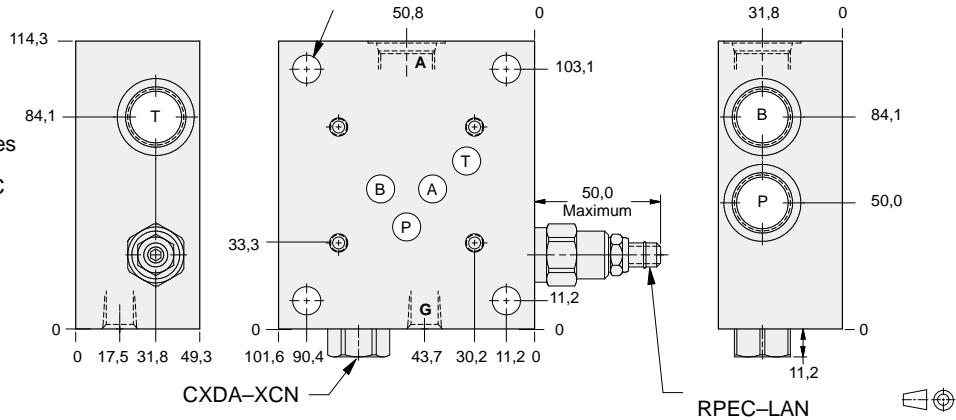
FUNCTION



Relief P to T
Check on P

Mounting Holes:
11,2 diameter through hole.
4 places.

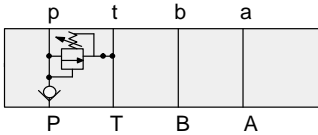
4 Interface Bolt Holes
x 12,7 deep
Inch: .250-20 UNC
Metric: M6 x 1.0



Bolt Hole Interface	Gauge Port	Ports A,B,P,T	ALUMINIUM		SG IRON	
			Model Code	List Price	Model Code	List Price
Inch	.25 NPTF	.50 NPTF	YREJ-LAN-BC		YREJ-LAN-BC/S	
Inch	.25 NPTF	SAE-10	YREJ-LAN-BK		YREJ-LAN-BK/S	
Metric	.25 BSPP	.50 BSPP	YREJ-LAN-BV		YREJ-LAN-BV/S	

Rear Ported Subplates

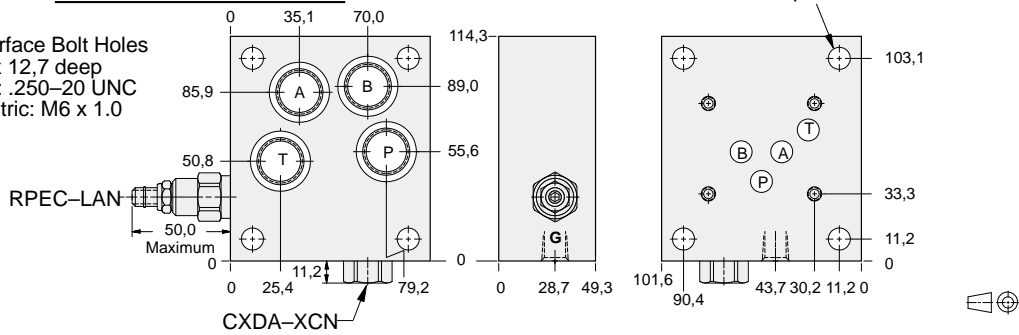
FUNCTION



Relief P to T
Check on P

Mounting Holes:
11,2 diameter through hole.
4 places.

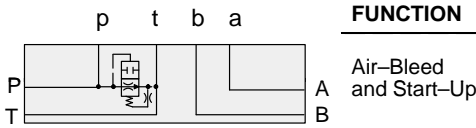
4 Interface Bolt Holes
x 12,7 deep
Inch: .250-20 UNC
Metric: M6 x 1.0



Bolt Hole Interface	Gauge Port	Ports A,B,P,T	ALUMINIUM		SG IRON	
			Model Code	List Price	Part Number	List Price
Inch	.25 NPTF	.50 NPTF	YREQ-LAN-BC		YREQ-LAN-BC/S	
Inch	.25 NPTF	SAE-10	YREQ-LAN-BK		YREQ-LAN-BK/S	
Metric	.25 BSPP	.50 BSPP	YREQ-LAN-BV		YREQ-LAN-BV/S	

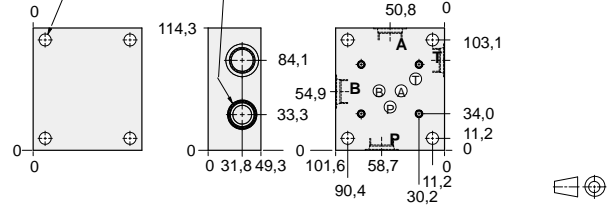
- Aluminium rated to 210 bar and SG Iron rated to 350 bar.
- See page viii for ordering cartridge/body and seals. Pressure ratings, material specifications on page xiv.

Side Ported Subplates



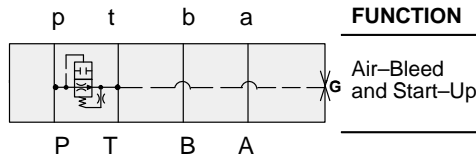
Mounting Holes:
11,2 diameter through hole.
4 places.

T-3A Cavity
Locating Shoulder
Depth 0,8



Interface Bolt Holes	Ports A,B,P,T	ALUMINIUM		SG IRON	
		Model Code	List Price	Model Code	List Price
Inch	.50 NPTF	CSC		CSC/S	
Inch	SAE-10	CSK		CSK/S	
Metric	.50 BSPP	CSV		CSV/S	

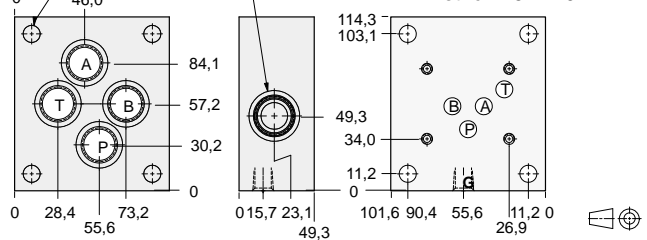
Rear Ported Subplates



Mounting Holes:
11,2 diameter through hole.
4 places.

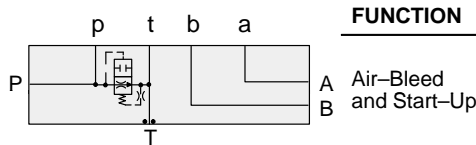
T-3A Cavity
Locating Shoulder
Depth 0,8

4 Interface Bolt Holes
x 12,7 deep
Inch: .250-20 UNC
Metric: M6 x 1.0



Interface Bolt Holes	Gauge Port	Ports A,B,P,T	ALUMINIUM		SG IRON	
			Model Code	List Price	Model Code	List Price
Inch	.25 NPTF	.50 NPTF	CRC		CRC/S	
Inch	.25 NPTF	SAE-10	CRK		CRK/S	
Metric	.25 BSPP	.50 BSPP	CRV		CRV/S	

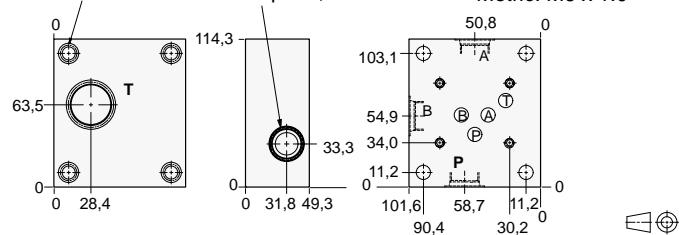
Side Ported Subplates with Gasket Mount Tank Port



Mounting Holes:
11,2 diameter through hole.
4 places.

T-3A Cavity
Locating Shoulder
Depth 0,8

4 Interface Bolt Holes
x 12,7 deep
Inch: .250-20 UNC
Metric: M6 x 1.0



Interface Bolt Holes	Ports P, A, B	Port T	ALUMINIUM		SG IRON	
			Model Code	List Price	Model Code	List Price
Inch	.50 NPTF	.50 NPTF	CTC		CTC/S	
Inch	SAE-10	.50 NPTF	CTK		CTK/S	
Metric	.50 BSPP	.50 BSPP	CTV		CTV/S	

TYPICAL CARTRIDGES USED WITH BODIES SHOWN ABOVE

Cartridge	Function	Model Code	List Price
	Air Bleed and Start-up Valve		
	NQEBPage 10.16		

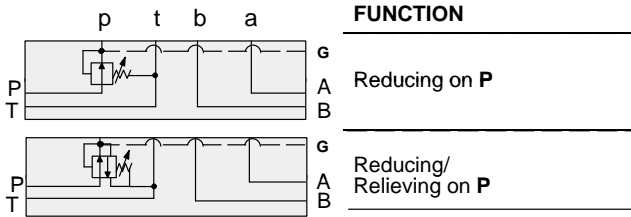


ISO 05 SANDWICH BODIES



- Aluminium rated to 210 bar and SG Iron rated to 350 bar.
- See page viii for ordering cartridge/body and seals. Pressure ratings, material specifications on page xiv.

Side Ported Subplates

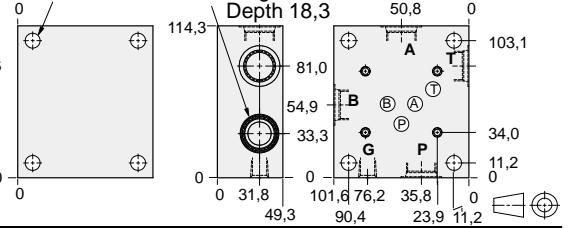


Mounting Holes:

11,2 diameter through hole.
4 places.

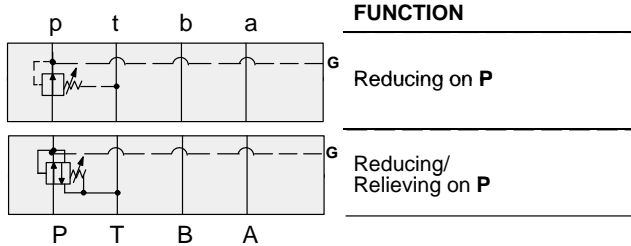
4 Interface Bolt Holes
x 12,7 deep
Inch: .250-20 UNC
Metric: M6 x 1.0

T-2A Cavity
Locating Shoulder
Depth 18,3



Interface Bolt Holes	Gauge Port	Ports A,B,P,T	ALUMINIUM		SG IRON	
			Model Code	List Price	Model Code	List Price
Inch	.25 NPTF	.50 NPTF	BSC		BSC/S	
Inch	.25 NPTF	SAE-10	BSK		BSK/S	
Metric	.25 BSPP	.50 BSPP	BSV		BSV/S	

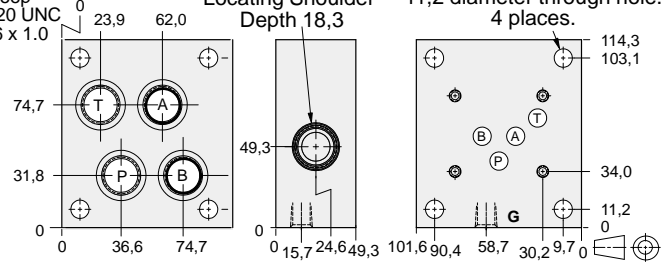
Rear Ported Subplates



4 Interface Bolt Holes
x 12,7 deep
Inch: .250-20 UNC
Metric: M6 x 1.0

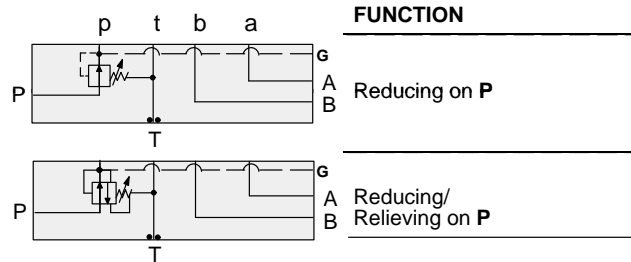
T-2A Cavity
Locating Shoulder
Depth 18,3

Mounting Holes:
11,2 diameter through hole.
4 places.



Interface Bolt Holes	Gauge Port	Ports A,B,P,T	ALUMINIUM		SG IRON	
			Model Code	List Price	Model Code	List Price
Inch	.25 NPTF	.50 NPTF	BRC		BRC/S	
Inch	.25 NPTF	SAE-10	BRK		BRK/S	
Metric	.25 BSPP	.50 BSPP	BRV		BRV/S	

Side Ported Subplates with Gasket Mount Tank Port

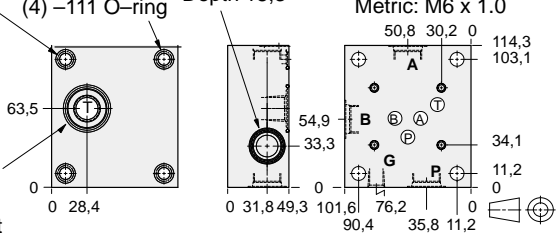


Mounting Holes (Sealed):
11,2 diameter through hole.
4 places.

(4) -111 O-ring
(1) - 125 O-ring
22,1 maximum
interface diameter
.500-14 NPTF Port

T-2A Cavity
Locating Shoulder
Depth 18,3

4 Interface Bolt Holes
x 12,7 deep
Inch: .250-20 UNC
Metric: M6 x 1.0



Interface Bolt Holes	Gauge Port	Ports A,B,P	ALUMINIUM		SG IRON	
			Model Code	List Price	Model Code	List Price
Inch	.25 NPTF	.50 NPTF	BTC		BTC/S	
Inch	.25 NPTF	SAE-10	BTK		BTK/S	
Metric	.25 BSPP	.50 BSPP	BTV		BTV/S	

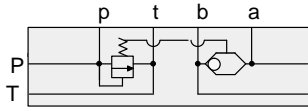
TYPICAL CARTRIDGES USED WITH BODIES SHOWN ABOVE

	Pilot Operated Reducing Valve PBFB Page 3.06		Pilot Operated Reducing/Relieving Valve PPFB Page 3.10
--	---	--	---

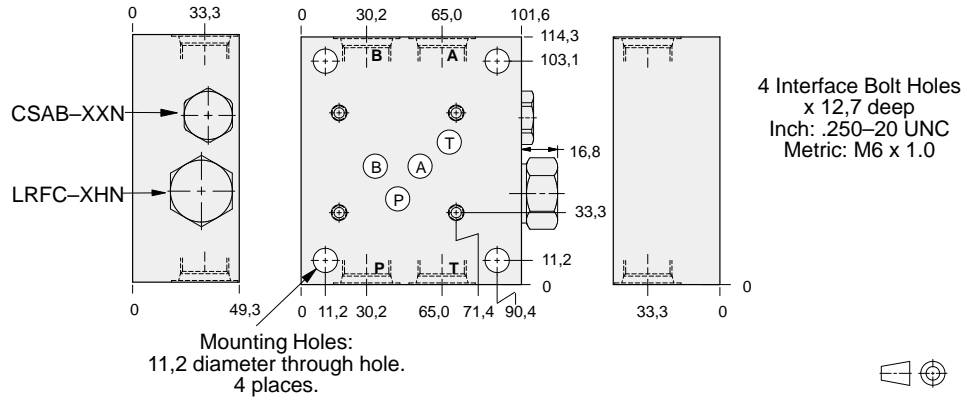
- Aluminium rated to 210 bar and SG Iron rated to 350 bar.
- See page viii for ordering cartridge/body and seals. Pressure ratings, material specifications on page xiv.

Side Ported Subplates

FUNCTION



Bypass
Compensator
for Proportional
Valves



Bolt Hole Interface	Ports A,B,P,T	ALUMINIUM		SG IRON	
		Model Code	List Price	Model Code	List Price
Inch	.50 NPTF	YFES-XHN-BC		YFES-XHN-BC/S	
Inch	SAE-10	YFES-XHN-BK		YFES-XHN-BK/S	
Metric	.50 BSPP	YFES-XHN-BV		YFES-XHN-BV/S	



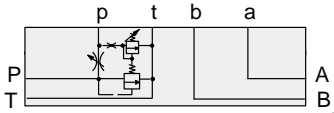
ISO 05 SANDWICH BODIES



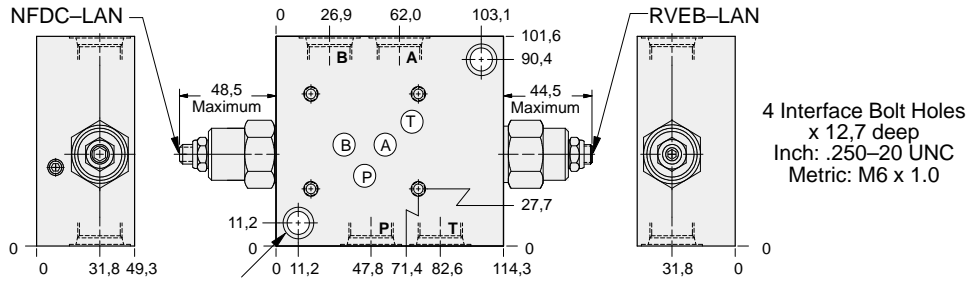
- Aluminium rated to 210 bar and SG Iron rated to 350 bar.
- See page viii for ordering cartridge/body and seals. Pressure ratings, material specifications on page xiv.

Side Ported Subplates

FUNCTION



Relief **P** to **T**
and Bypass
Flow Regulator



4 Interface Bolt Holes
x 12,7 deep
Inch: .250-20 UNC
Metric: M6 x 1.0

Mounting Holes:
11,9 diameter through hole.
Counterbore 17,5 diameter x 11,2 deep.
2 places.



Bolt Hole Interface	Ports A,B,P,T	ALUMINIUM		SG IRON	
		Model Code	List Price	Model Code	List Price
Inch	.50 NPTF	YFED-LAN-BC		YFED-LAN-BC/S	
Inch	SAE-10	YFED-LAN-BK		YFED-LAN-BK/S	
Metric	.50 BSPP	YFED-LAN-BV		YFED-LAN-BV/S	



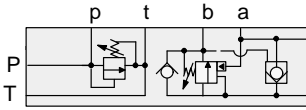
ISO 05 SANDWICH BODIES



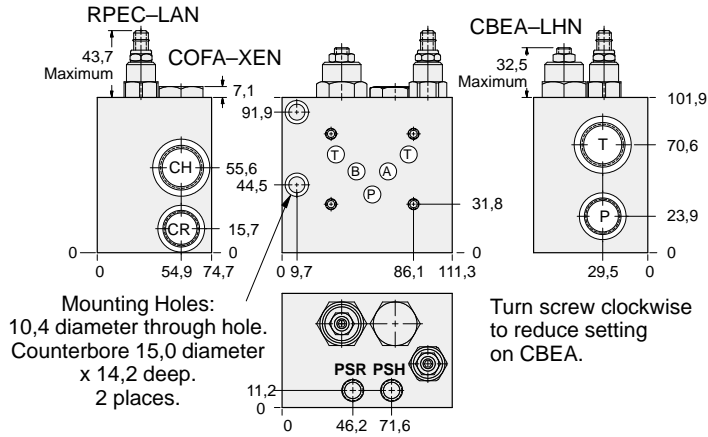
- Aluminium rated to 210 bar and SG Iron rated to 350 bar.
- See page viii for ordering cartridge/body and seals. Pressure ratings, material specifications on page xiv.

Side Ported Subplates

FUNCTION



Relief P to T
Regenerative
B to A



4 Interface Bolt Holes
x 12,7 deep
Inch: .250-20 UNC
Metric: M6 x 1.0

Bolt Hole Interface	Ports			ALUMINIUM		SG IRON	
	P,CR	T,CH	PSH,PSR	Model Code	List Price	Model Code	List Price
Inch	.50 NPTF	.75 NPTF	.25 NPTF	YDEM-LHN-BD		YDEM-LHN-BD/S	
Inch	SAE-10	SAE-12	.25 NPTF	YDEM-LHN-BL		YDEM-LHN-BL/S	
Metric	.50 BSPP	.75 BSPP	.25 BSPP	YDEM-LHN-BW		YDEM-LHN-BW/S	