

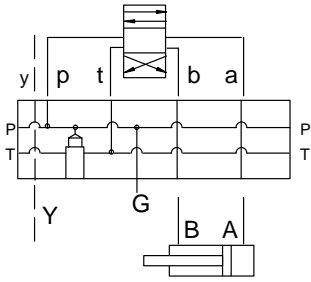


# BAR MANIFOLDS



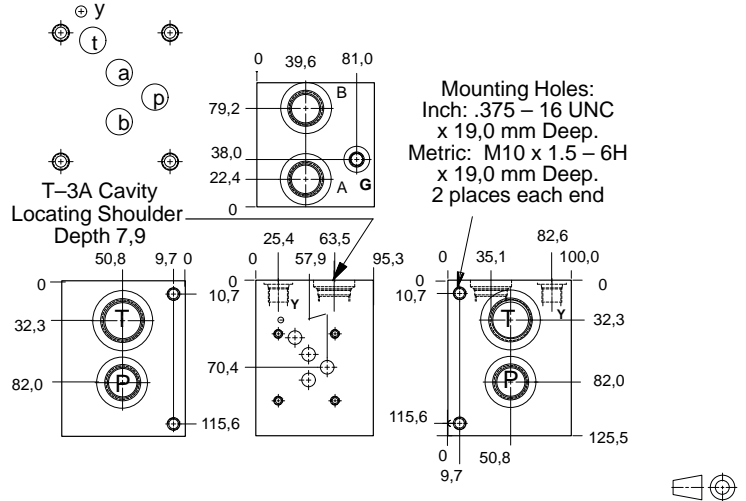
- Aluminium rated to 210 bar and SG Iron rated to 350 bar.
- See page viii for ordering cartridge/body and seals. Pressure ratings, material specifications on page xiv.

## ISO 05 H (U.S) Parallel Circuit with Relief Cavity and Y Port



### FUNCTION

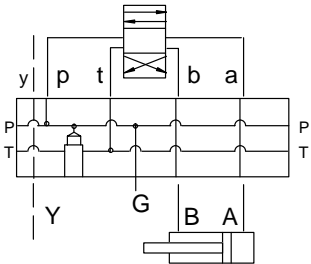
One Station  
(U.S. Version)



Mounting Holes	Port T	Ports A, B, P	Port Y	Gauge Port	ALUMINIUM		SG IRON	
					Model Code	List Price	Model Code	List Price
inch	1.00 NPTF	.75 NPTF	.25 NPTF	.25 NPTF	VMC		VMC/S	
inch	SAE-16	SAE-12	SAE-6	SAE-4	VMJ		VMJ/S	
metric	1.00 BSPP	.75 BSPP	.25 BSPP	.25 BSPP	VMR		VMR/S	

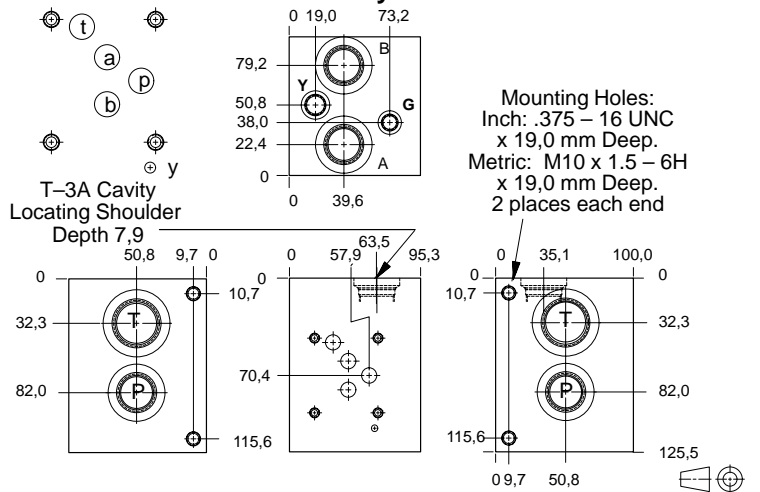
Bar Manifold Mounting Kits to be ordered separately. See page 12.087.

## ISO 05 H (CETOP) Parallel Circuit with Relief Cavity and Y Port



### FUNCTION

One Station  
(CETOP Version)



Mounting Holes	Port T	Ports A, B, P	Port Y	Gauge Port	ALUMINIUM		SG IRON	
					Model Code	List Price	Model Code	List Price
inch	1.00 NPTF	.75 NPTF	.25 NPTF	.25 NPTF	VRE		VRE/S	
inch	SAE-16	SAE-12	SAE-6	SAE-4	VRL		VRL/S	
metric	1.00 BSPP	.75 BSPP	.25 BSPP	.25 BSPP	VRT		VRT/S	

Bar Manifold Mounting Kits to be ordered separately. See page 12.087.

### TYPICAL CARTRIDGES USED WITH BODIES SHOWN ABOVE

Cartridge	Page	Cartridge	Page
	Pilot Operated Relief Valve RPGC Page 1.06		Direct Acting Relief Valve RDFA Page 1.10
OTHER VALVES:			

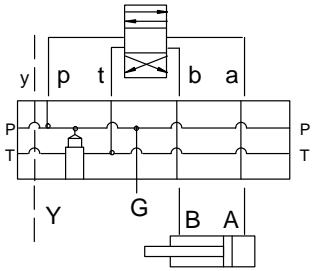


# BAR MANIFOLDS



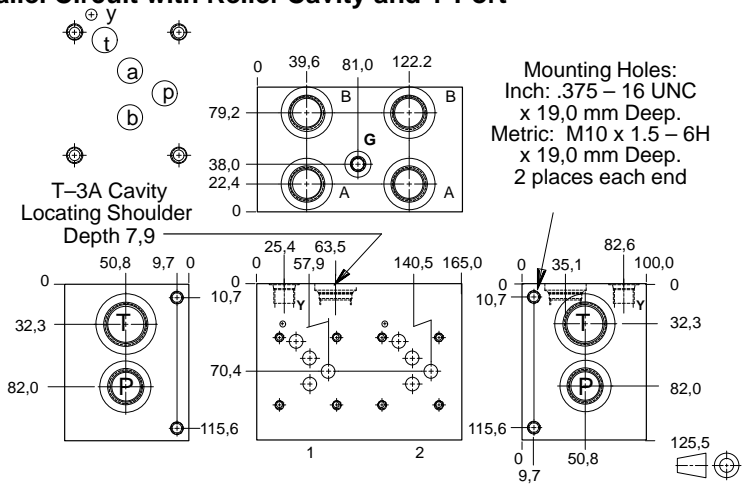
- Aluminium rated to 210 bar and SG Iron rated to 350 bar.
- See page viii for ordering cartridge/body and seals. Pressure ratings, material specifications on page xiv.

## ISO 05 H (U.S.) Parallel Circuit with Relief Cavity and Y Port



### FUNCTION

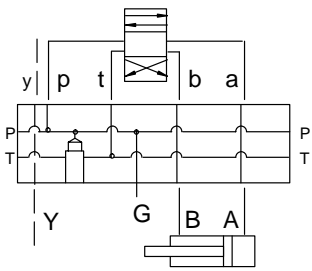
Two Station  
(U.S. Version)



Mounting Holes	Port T	Ports A, B, P	Port Y	Gauge Port	ALUMINIUM		SG IRON	
					Model Code	List Price	Model Code	List Price
inch	1.00 NPTF	.75 NPTF	.25 NPTF	.25 NPTF	VMD		VMD/S	
inch	SAE-16	SAE-12	SAE-6	SAE-4	VMK		VMK/S	
metric	1.00 BSPP	.75 BSPP	.25 BSPP	.25 BSPP	VMT		VMT/S	

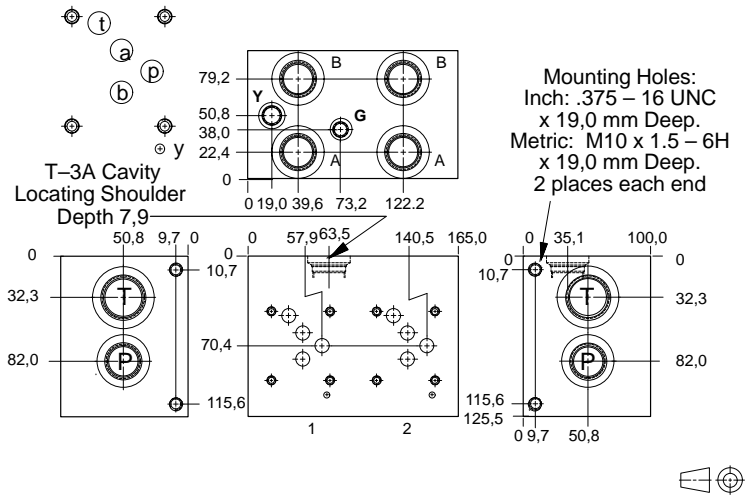
Bar Manifold Mounting Kits to be ordered separately. See page 12.087.

## ISO 05 H (CETOP) Parallel Circuit with Relief Cavity and Y Port



### FUNCTION

Two Station  
(CETOP Version)



Mounting Holes	Port T	Ports A, B, P	Port Y	Gauge Port	ALUMINIUM		SG IRON	
					Model Code	List Price	Model Code	List Price
inch	1.00 NPTF	.75 NPTF	.25 NPTF	.25 NPTF	VRF		VRF/S	
inch	SAE-16	SAE-12	SAE-6	SAE-4	VRM		VRM/S	
metric	1.00 BSPP	.75 BSPP	.25 BSPP	.25 BSPP	VRV		VRV/S	

Bar Manifold Mounting Kits to be ordered separately. See page 12.087.

### TYPICAL CARTRIDGES USED WITH BODIES SHOWN ABOVE

	Pilot Operated Relief Valve		Direct Acting Relief Valve
	RPGC Page 1.06		RDFA Page 1.10
OTHER VALVES:			

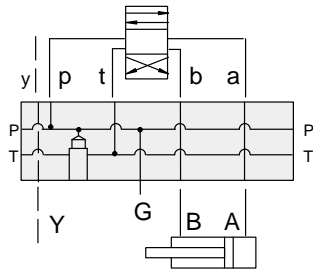


# BAR MANIFOLDS



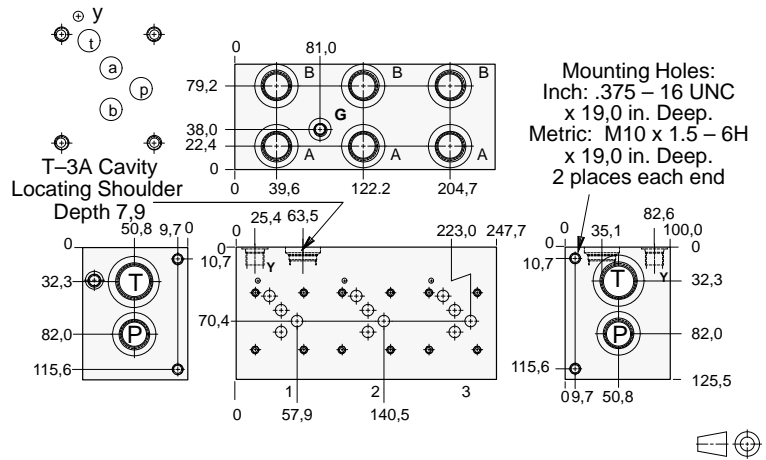
- Aluminium rated to 210 bar and SG Iron rated to 350 bar.
- See page viii for ordering cartridge/body and seals. Pressure ratings, material specifications on page xiv.

## ISO 05 H (U.S.) Parallel Circuit with Relief Cavity and Y Port



### FUNCTION

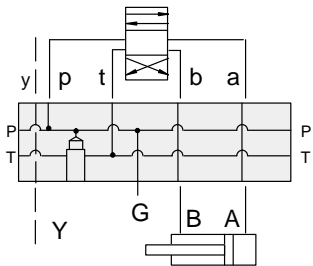
Three Station  
(U.S. Version)



Mounting Holes	Port T	Ports A, B, P	Port Y	Gauge Port	ALUMINIUM		SG IRON	
					Model Code	List Price	Model Code	List Price
inch	1.00 NPTF	.75 NPTF	.25 NPTF	.25 NPTF	VME		VME/S	
inch	SAE-16	SAE-12	SAE-6	SAE-4	VML		VML/S	
metric	1.00 BSPP	.75 BSPP	.25 BSPP	.25 BSPP	VMW		VMW/S	

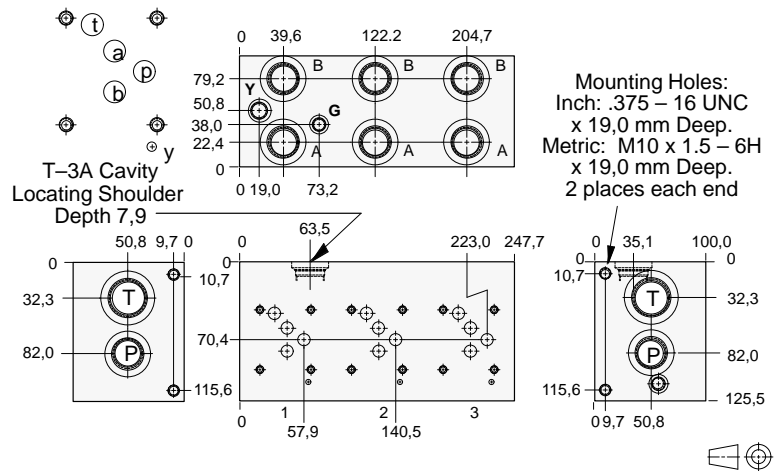
Bar Manifold Mounting Kits to be ordered separately. See page 12.087.

## ISO 05 H (CETOP) Parallel Circuit with Relief Cavity and Y Port



### FUNCTION

Three Station  
(CETOP Version)



Mounting Holes	Port T	Ports A, B, P	Port Y	Gauge Port	ALUMINIUM		SG IRON	
					Model Code	List Price	Model Code	List Price
inch	1.00 NPTF	.75 NPTF	.25 NPTF	.25 NPTF	VRG		VRG/S	
inch	SAE-16	SAE-12	SAE-6	SAE-4	VRN		VRN/S	
metric	1.00 BSPP	.75 BSPP	.25 BSPP	.25 BSPP	VRW		VRW/S	

Bar Manifold Mounting Kits to be ordered separately. See page 12.087.

### TYPICAL CARTRIDGES USED WITH BODIES SHOWN ABOVE

	Pilot Operated Relief Valve		Direct Acting Relief Valve
	RPGC Page 1.06		RDFA Page 1.10
OTHER VALVES:			

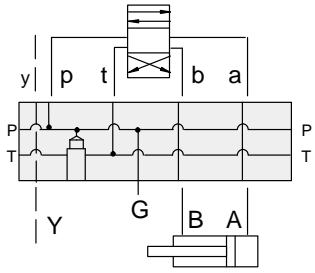


# BAR MANIFOLDS



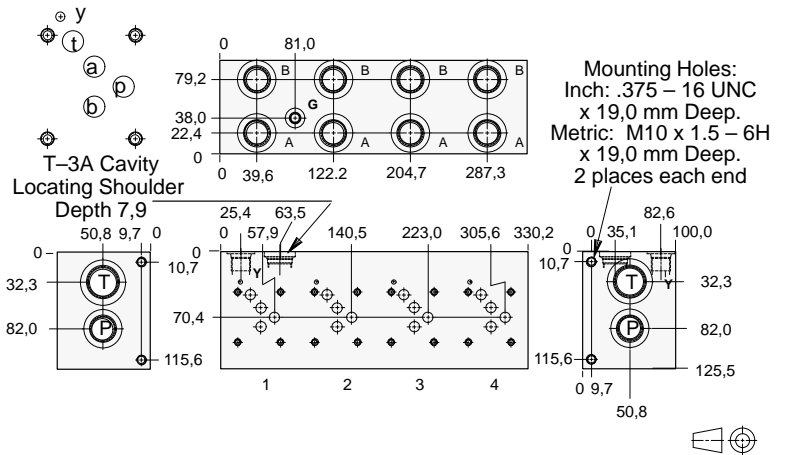
- Aluminium rated to 210 bar and SG Iron rated to 350 bar.
- See page viii for ordering cartridge/body and seals. Pressure ratings, material specifications on page xiv.

## ISO 05 H (U.S.) Parallel Circuit with Relief Cavity and Y Port



### FUNCTION

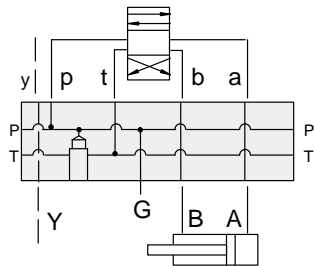
Four Station  
(U.S. Version)



Mounting Holes	Port T	Ports A, B, P	Port Y	Gauge Port	ALUMINIUM		SG IRON	
					Model Code	List Price	Model Code	List Price
inch	1.00 NPTF	.75 NPTF	.25 NPTF	.25 NPTF	VMF		VMF/S	
inch	SAE-16	SAE-12	SAE-6	SAE-4	VMM		VMM/S	
metric	1.00 BSPP	.75 BSPP	.25 BSPP	.25 BSPP	VMX		VMX/S	

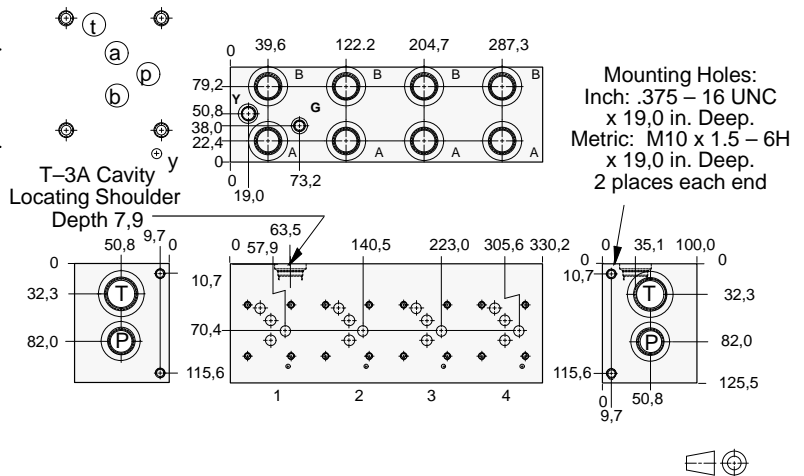
Bar Manifold Mounting Kits to be ordered separately. See page 12.087.

## ISO 05 H (CETOP) Parallel Circuit with Relief Cavity and Y Port



### FUNCTION

Four Station  
(CETOP Version)



Mounting Holes	Port T	Ports A, B, P	Port Y	Gauge Port	ALUMINIUM		SG IRON	
					Model Code	List Price	Model Code	List Price
inch	1.00 NPTF	.75 NPTF	.25 NPTF	.25 NPTF	VRH		VRH/S	
inch	SAE-16	SAE-12	SAE-6	SAE-4	VRP		VRP/S	
metric	1.00 BSPP	.75 BSPP	.25 BSPP	.25 BSPP	VRX		VRX/S	

Bar Manifold Mounting Kits to be ordered separately. See page 12.087.

### TYPICAL CARTRIDGES USED WITH BODIES SHOWN ABOVE

	Pilot Operated Relief Valve		Direct Acting Relief Valve
	RPGC Page 1.06		RDFA Page 1.10
OTHER VALVES:			

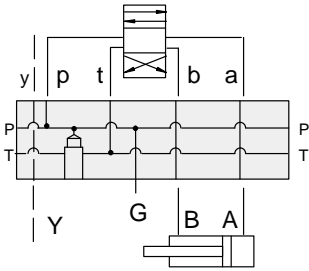


# BAR MANIFOLDS



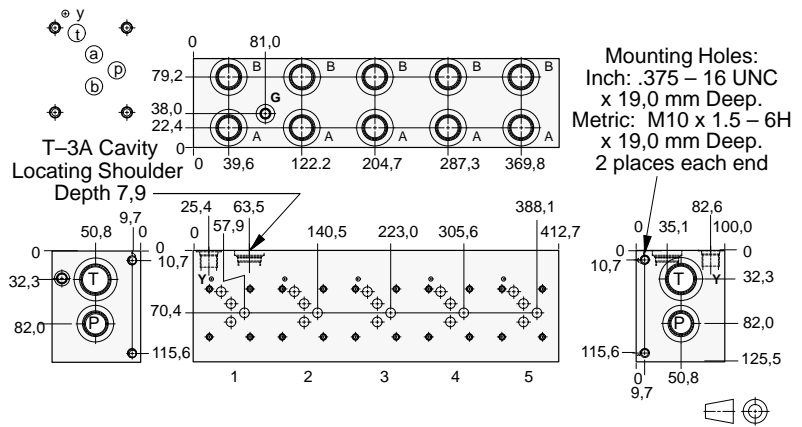
- Aluminium rated to 210 bar and SG Iron rated to 350 bar.
- See page viii for ordering cartridge/body and seals. Pressure ratings, material specifications on page xiv.

## ISO 05 H (U.S.) Parallel Circuit with Relief Cavity and Y Port



### FUNCTION

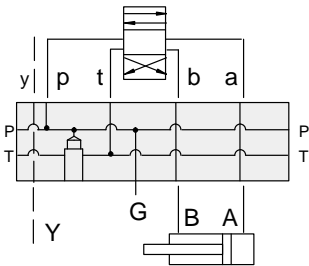
Five Station  
(U.S. Version)



Mounting Holes	Port T	Ports A, B, P	Port Y	Gauge Port	ALUMINIUM		SG IRON	
					Model Code	List Price	Model Code	List Price
inch	1.00 NPTF	.75 NPTF	.25 NPTF	.25 NPTF	VMG		VMG/S	
inch	SAE-16	SAE-12	SAE-6	SAE-4	VMN		VMN/S	
metric	1.00 BSPP	.75 BSPP	.25 BSPP	.25 BSPP	VMY		VMY/S	

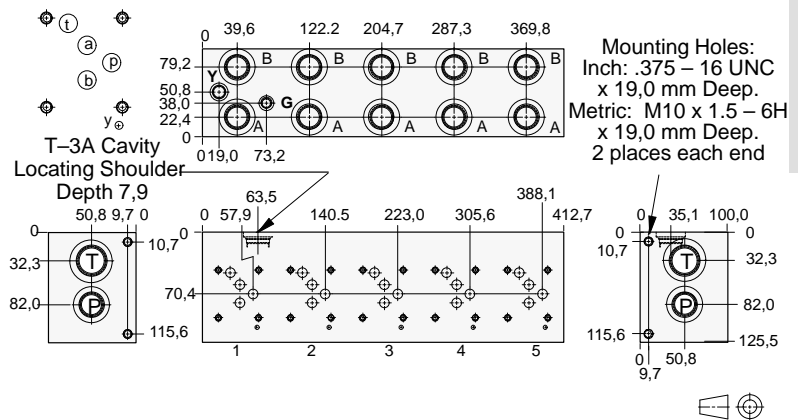
Bar Manifold Mounting Kits to be ordered separately. See page 12.087.

## ISO 05 H (CETOP) Parallel Circuit with Relief Cavity and Y Port



### FUNCTION

Five Station  
(CETOP Version)



Mounting Holes	Port T	Ports A, B, P	Port Y	Gauge Port	ALUMINIUM		SG IRON	
					Model Code	List Price	Model Code	List Price
inch	1.00 NPTF	.75 NPTF	.25 NPTF	.25 NPTF	VRJ		VRJ/S	
inch	SAE-16	SAE-12	SAE-6	SAE-4	VRR		VRR/S	
metric	1.00 BSPP	.75 BSPP	.25 BSPP	.25 BSPP	VRY		VRY/S	

Bar Manifold Mounting Kits to be ordered separately. See page 12.087.

### TYPICAL CARTRIDGES USED WITH BODIES SHOWN ABOVE

	Pilot Operated Relief Valve		Direct Acting Relief Valve
	RPGC Page 1.06		RDFA Page 1.10
OTHER VALVES:			

