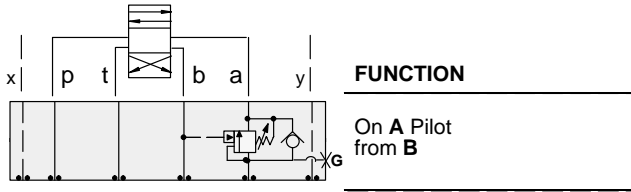




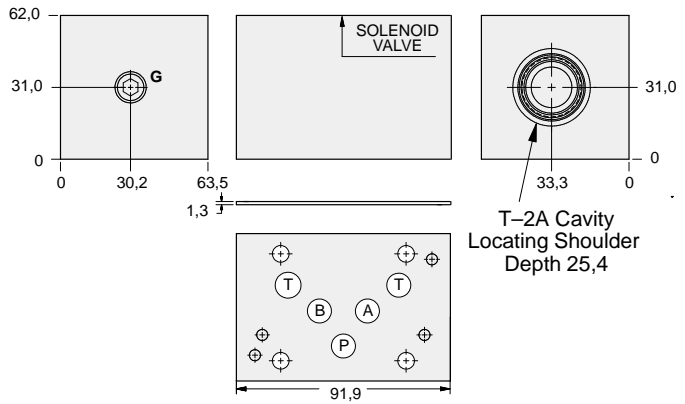
ISO 05 X,Y SANDWICH BODIES



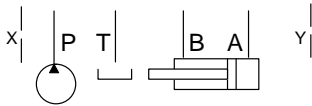
- Aluminium rated to 210 bar and SG Iron rated to 350 bar.
- See page viii for ordering cartridge/body and seals. Pressure ratings, material specifications on page xiv.



Counterbalance Valves



Order Retainer and Seal Kits separately.
(See Page 12.002)



Gauge Port (Plugged)	ALUMINIUM		SG IRON	
	Model Code	List Price	Model Code	List Price
.25 NPTF	BJA		BJA/S	
.25 BSPP	BJA/M		BJA/T	

05_{xy} COUNTERBALANCE

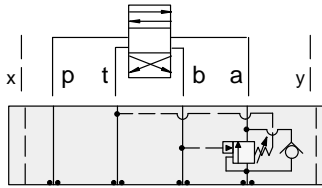
TYPICAL CARTRIDGES USED WITH BODIES SHOWN ABOVE			
	Counterbalance Valve, 3:1 Pilot Ratio		
	CBEA Page 4.10		
	Counterbalance Valve, 4.5:1 Pilot Ratio		
	CBEG Page 4.12		
	Counterbalance Valve, 10:1 Pilot Ratio		
	CBEH Page 4.14		
OTHER VALVES:			



ISO 05 X,Y SANDWICH BODIES



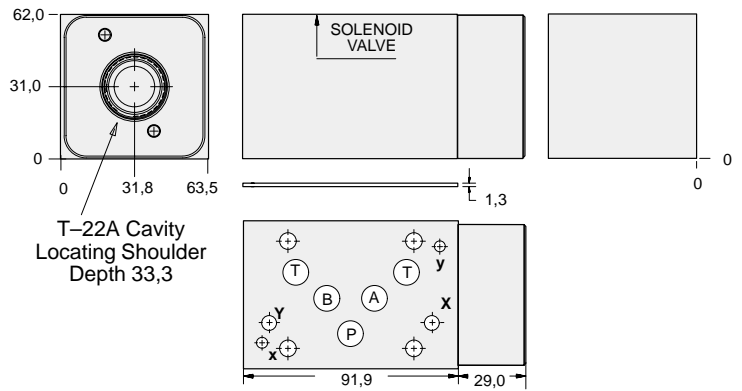
- Aluminium rated to 210 bar and SG Iron rated to 350 bar.
- See page viii for ordering cartridge/body and seals. Pressure ratings, material specifications on page xiv.



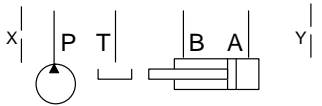
FUNCTION

On A Pilot from B
Vent to T

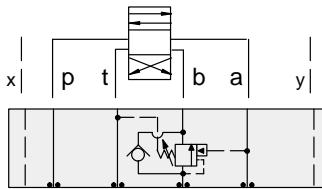
Counterbalance Valves



Order Retainer and Seal Kits separately.
(See Page 12.002)



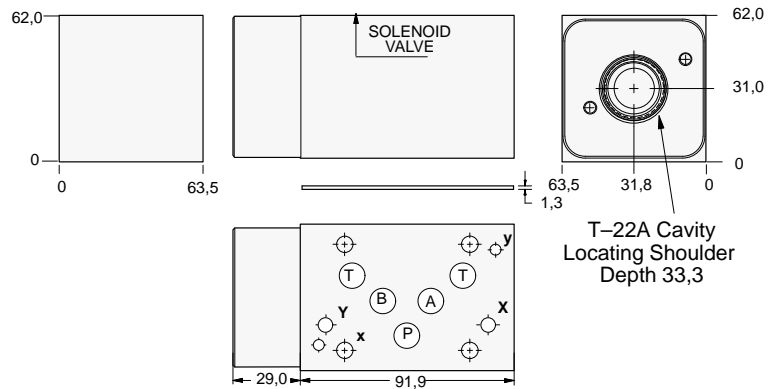
ALUMINIUM		SG IRON	
Model Code	List Price	Model Code	List Price
NJA		NJA/S	



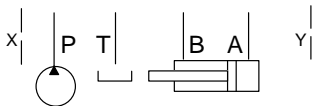
FUNCTION

On B Pilot from A
Vent to T

Counterbalance Valves



Order Retainer and Seal Kits separately.
(See Page 12.002)



ALUMINIUM		SG IRON	
Model Code	List Price	Part Number	List Price
NJB		NJB/S	

TYPICAL CARTRIDGES USED WITH BODIES SHOWN ABOVE

	Vented Counterbalance Valve, 3:1 Pilot Ratio		
	CWEA Page 4.18		
	Vented Counterbalance Valve, 5:1 Pilot Ratio		
	CWEG Page 4.20		
OTHER VALVES:			

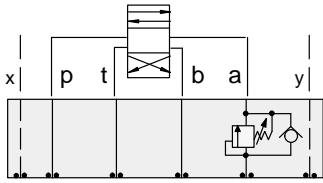
05xy COUNTERBALANCE



ISO 05 X,Y SANDWICH BODIES



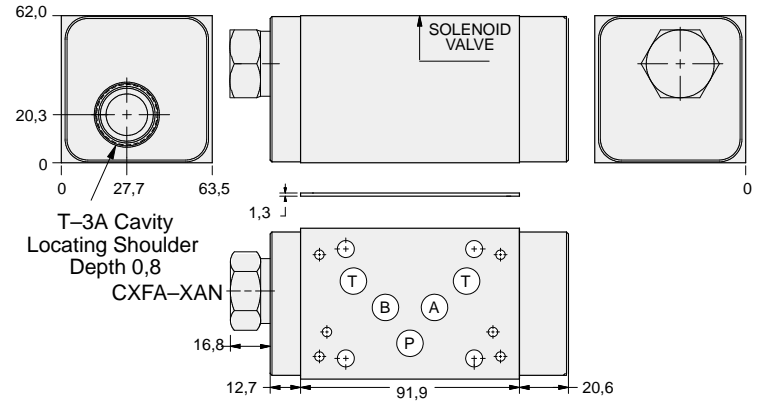
- Aluminium rated to 210 bar and SG Iron rated to 350 bar.
- See page viii for ordering cartridge/body and seals. Pressure ratings, material specifications on page xiv.



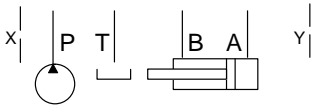
FUNCTION

On A
No Pilot Assist

Counterbalance Valves

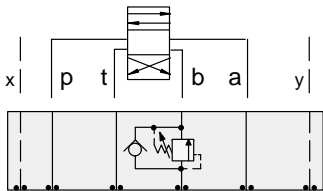


Order Retainer and Seal Kits separately.
(See Page 12.002)



ALUMINIUM		SG IRON	
Model Code	List Price	Model Code	List Price
CJ4		CJ4/S	

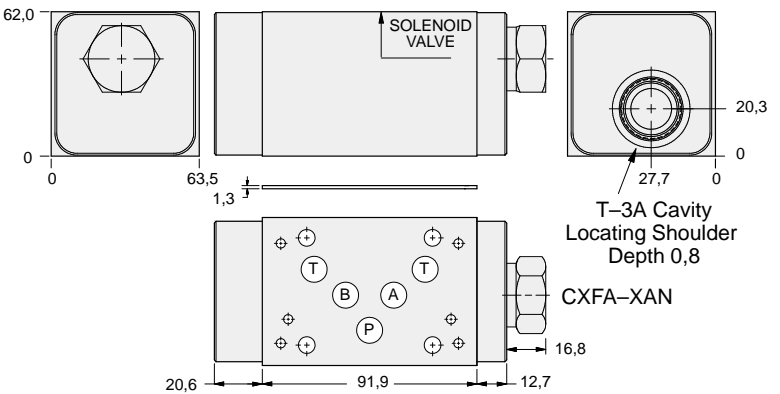
05xy COUNTERBALANCE



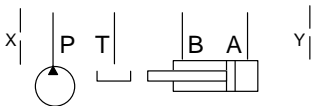
FUNCTION

On B
No pilot assist

Counterbalance Valves



Order Retainer and Seal Kits separately.
(See Page 12.002)



ALUMINIUM		SG IRON	
Model Code	List Price	Part Number	List Price
CJ5		CJ5/S	

TYPICAL CARTRIDGES USED WITH BODIES SHOWN ABOVE

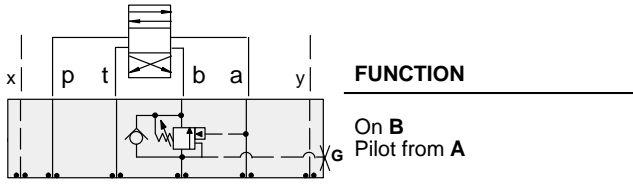
	Direct Acting Relief Valve		
	RDFA Page 1.10		
OTHER VALVES:			



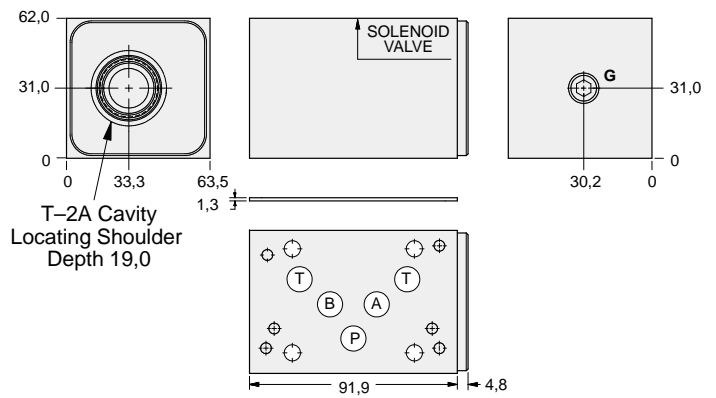
ISO 05 X,Y SANDWICH BODIES



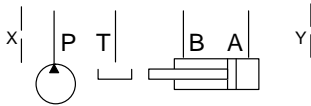
- Aluminium rated to 210 bar and SG Iron rated to 350 bar.
- See page viii for ordering cartridge/body and seals. Pressure ratings, material specifications on page xiv.



Counterbalance Valves



Order Retainer and Seal Kits separately.
(See Page 12.002)



Gauge Port (Plugged)	ALUMINIUM		SG IRON	
	Model Code	List Price	Model Code	List Price
.25 NPTF	BJB		BJB/S	
.25 BSPP	BJB/M		BJB/T	



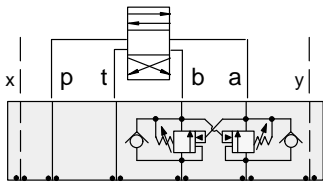
TYPICAL CARTRIDGES USED WITH BODIES SHOWN ABOVE			
	Counterbalance Valve, 3:1 Pilot Ratio		
	CBEA Page 4.10		
	Counterbalance Valve, 4.5:1 Pilot Ratio		
	CBEG Page 4.12		
	Counterbalance Valve, 10:1 Pilot Ratio		
	CBEH Page 4.14		
OTHER VALVES:			



ISO 05 X,Y SANDWICH BODIES



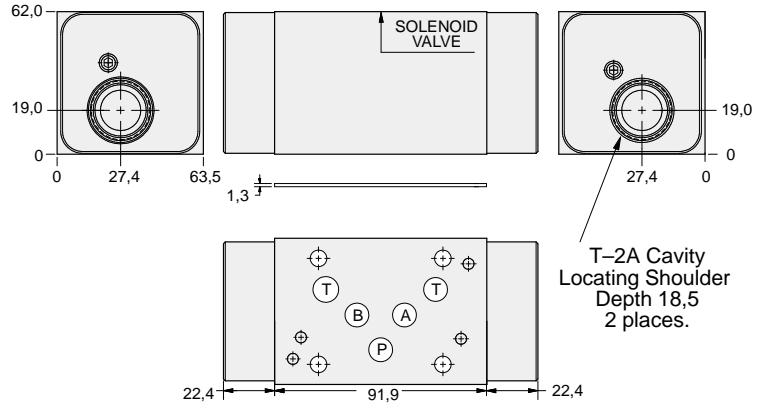
- Aluminium rated to 210 bar and SG Iron rated to 350 bar.
- See page viii for ordering cartridge/body and seals. Pressure ratings, material specifications on page xiv.



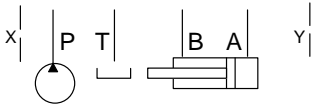
FUNCTION

On A and B
Cross-Piloted

Counterbalance Valves



Order Retainer and Seal Kits separately.
(See Page 12.002)



ALUMINIUM		SG IRON	
Model Code	List Price	Model Code	List Price
BJY		BJY/S	

05_{xy} COUNTERBALANCE

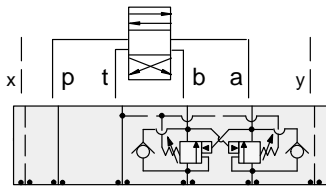
TYPICAL CARTRIDGES USED WITH BODIES SHOWN ABOVE			
	Counterbalance Valve, 3:1 Pilot Ratio		
	CBEA Page 4.10		
	Counterbalance Valve, 4.5:1 Pilot Ratio		
	CBEG Page 4.12		
	Counterbalance Valve, 10:1 Pilot Ratio		
	CBEH Page 4.14		
OTHER VALVES:			



ISO 05 X,Y SANDWICH BODIES



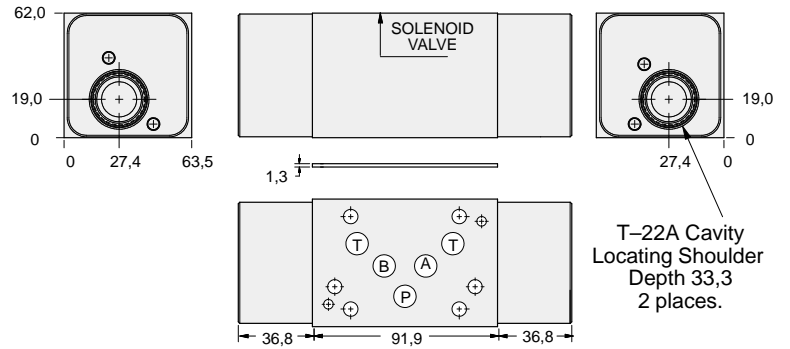
- Aluminium rated to 210 bar and SG Iron rated to 350 bar.
- See page viii for ordering cartridge/body and seals. Pressure ratings, material specifications on page xiv.



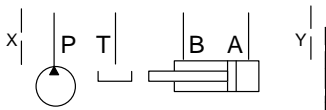
FUNCTION

On **A** and **B**
Cross-Piloted
Vents to **T**

Counterbalance Valves



Order Retainer and Seal Kits separately.
(See Page 12.002)



ALUMINIUM		SG IRON	
Model Code	List Price	Model Code	List Price
NJY		NJY/S	

05xy COUNTERBALANCE

TYPICAL CARTRIDGES USED WITH BODIES SHOWN ABOVE

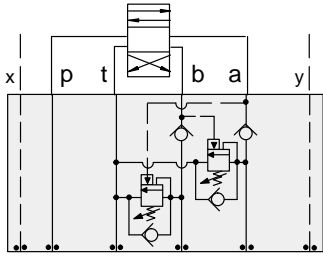
	Vented Counterbalance Valve, 3:1 Pilot Ratio		
	CWEA Page 4.18		
	Vented Counterbalance Valve, 5:1 Pilot Ratio		
	CWEG Page 4.20		
OTHER VALVES:			



ISO 05 X,Y SANDWICH BODIES



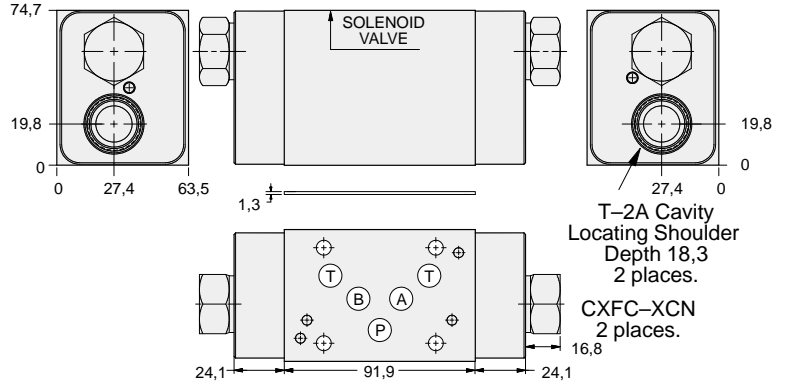
- Aluminium rated to 210 bar and SG Iron rated to 350 bar.
- See page viii for ordering cartridge/body and seals. Pressure ratings, material specifications on page xiv.



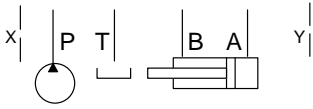
FUNCTION

Cushion Lock
Circuit
On A and B

Counterbalance Valves



Order Retainer and Seal Kits separately.
(See Page 12.002)



ALUMINIUM		SG IRON	
Model Code	List Price	Model Code	List Price
BJ8		BJ8/S	

05xy COUNTERBALANCE

TYPICAL CARTRIDGES USED WITH BODIES SHOWN ABOVE			
	Counterbalance Valve, 3:1 Pilot Ratio		
	CBEA Page 4.10		
	Counterbalance Valve, 4.5:1 Pilot Ratio		
	CBEG Page 4.12		
	Counterbalance Valve, 10:1 Pilot Ratio		
	CBEH Page 4.14		
OTHER VALVES:			