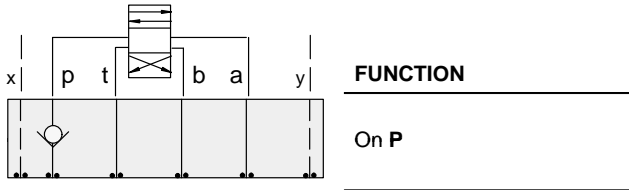




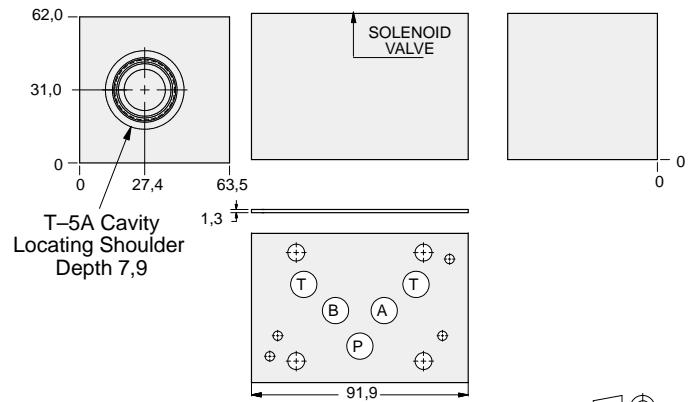
ISO 05 X,Y SANDWICH BODIES



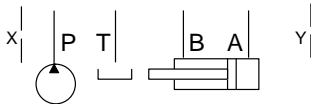
- Aluminium rated to 210 bar and SG Iron rated to 350 bar.
- See page viii for ordering cartridge/body and seals. Pressure ratings, material specifications on page xiv.



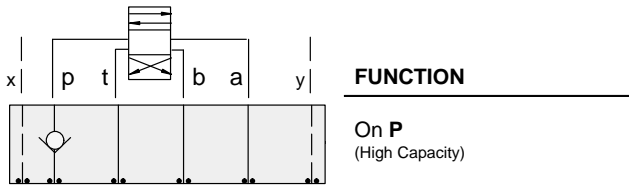
Check Valves



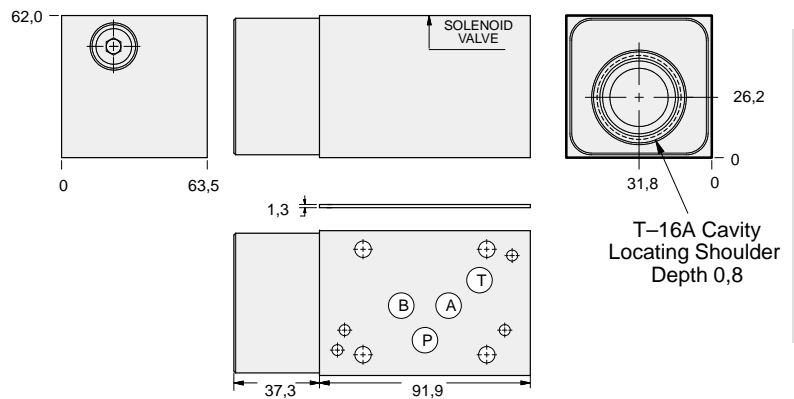
Order Retainer and Seal Kits separately.
(See Page 12.002)



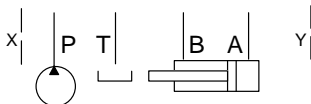
ALUMINIUM		SG IRON	
Model Code	List Price	Model Code	List Price
DJP		DJP/S	



Check Valves



Order Retainer and Seal Kits separately.
(See Page 12.002)



ALUMINIUM		SG IRON	
Model Code	List Price	Part Number	List Price
DJO		DJO/S	

TYPICAL CARTRIDGES USED WITH BODIES SHOWN ABOVE

	Check Valve, Free Flow Port 1 to Port 2 (Nose-to-Side)		
	CXFA Page 5.08 (use with DJP)		
	Check Valve, Free Flow Port 1 to Port 2 (Nose-to-Side)		
	CXHA Page 5.09 (use with DJO)		
OTHER VALVES:			

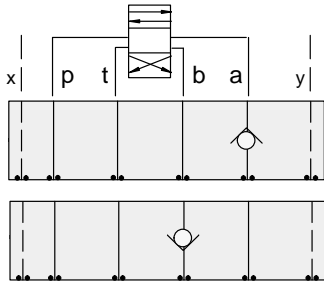
05xy CHECK



ISO 05 X,Y SANDWICH BODIES



- Aluminium rated to 210 bar and SG Iron rated to 350 bar.
- See page viii for ordering cartridge/body and seals. Pressure ratings, material specifications on page xiv.

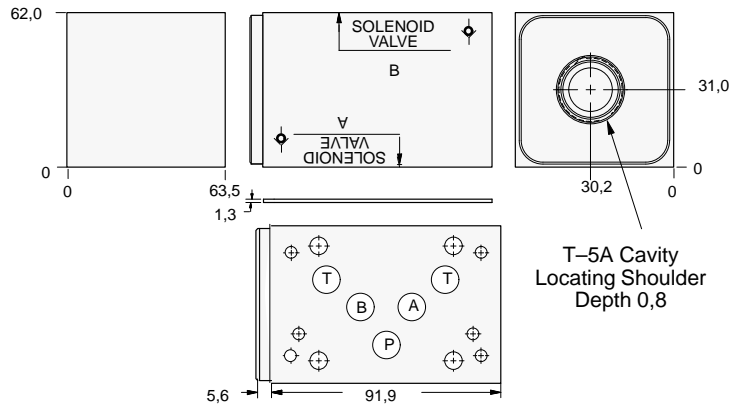


FUNCTION

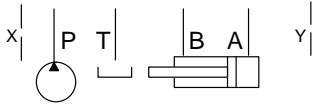
On A
Free Flow Out
of Valve

On B
Free Flow Into Valve

Check Valves

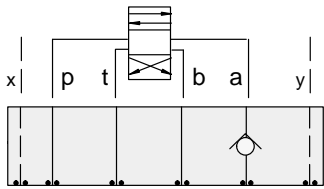


Order Retainer and Seal Kits separately.
(See Page 12.002)



ALUMINIUM		SG IRON	
Model Code	List Price	Model Code	List Price
DJK		DJK/S	

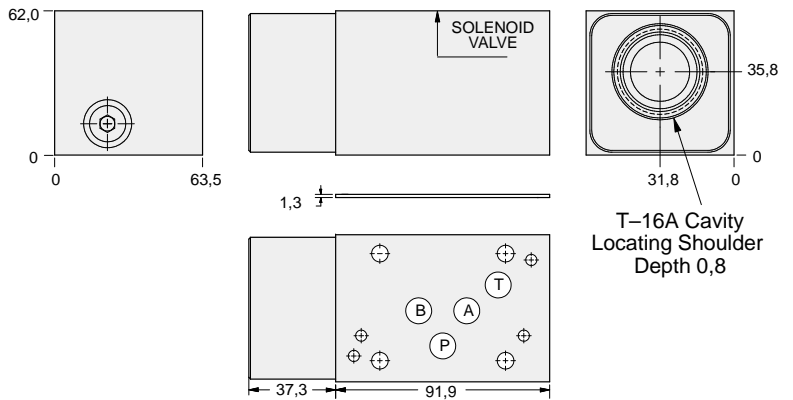
05xy CHECK



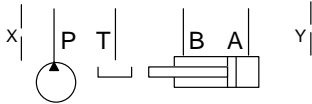
FUNCTION

On A
Free Flow Out of Valve
(High Capacity)

Check Valves



Order Retainer and Seal Kits separately.
(See Page 12.002)



ALUMINIUM		SG IRON	
Model Code	List Price	Part Number	List Price
DJC		DJC/S	

TYPICAL CARTRIDGES USED WITH BODIES SHOWN ABOVE

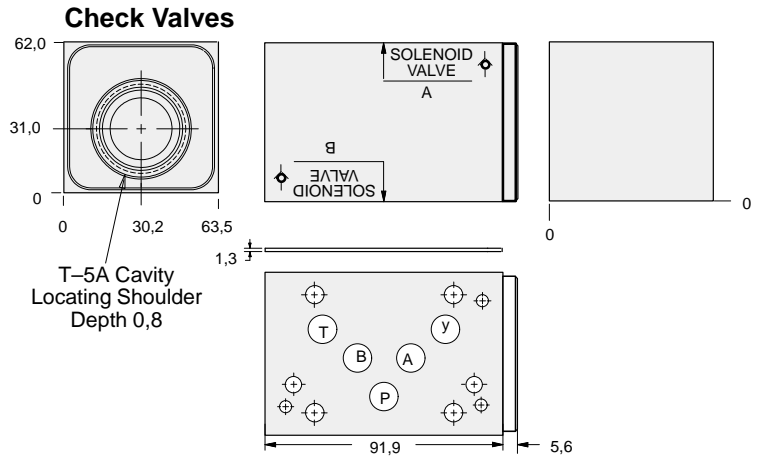
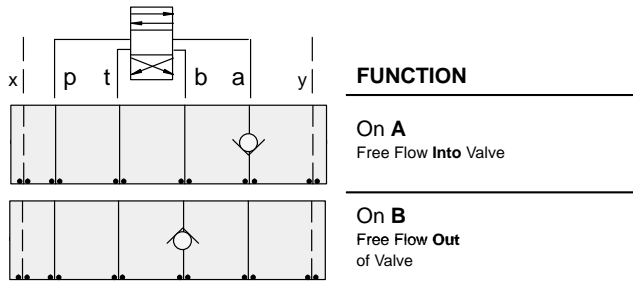
	Check Valve, Free Flow Port 1 to Port 2 (Nose-to-Side)		
	CXFA Page 5.08, (use with DJK)		
	Check Valve, Free Flow Port 1 to Port 2 (Nose-to-Side)		
	CXHA Page 5.09 (use with DJC)		
OTHER VALVES:			



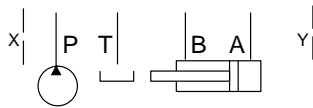
ISO 05 X,Y SANDWICH BODIES



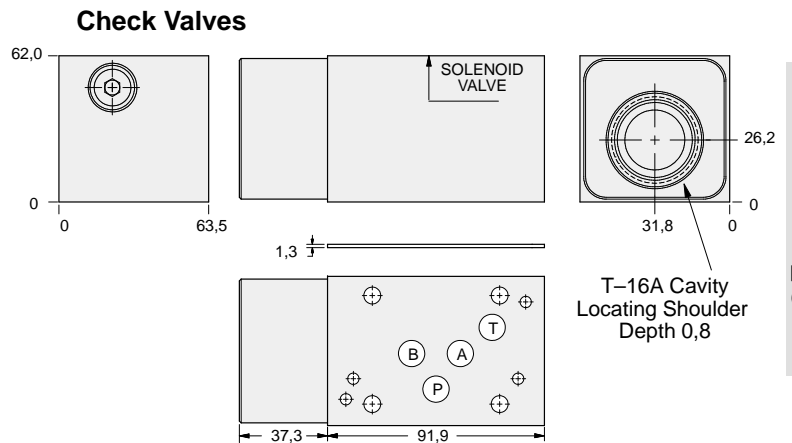
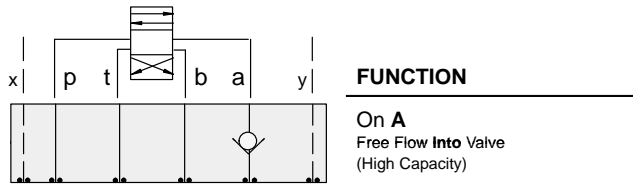
- Aluminium rated to 210 bar and SG Iron rated to 350 bar.
- See page viii for ordering cartridge/body and seals. Pressure ratings, material specifications on page xiv.



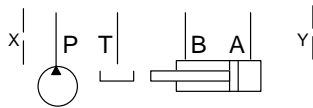
Order Retainer and Seal Kits separately.
(See Page 12.002)



ALUMINIUM		SG IRON	
Model Code	List Price	Model Code	List Price
DJJ		DJJ/S	



Order Retainer and Seal Kits separately.
(See Page 12.002)



ALUMINIUM		SG IRON	
Model Code	List Price	Part Number	List Price
DJD		DJD/S	

TYPICAL CARTRIDGES USED WITH BODIES SHOWN ABOVE

	Check Valve, Free Flow Port 1 to Port 2 (Nose-to-Side)		
	CXFA Page 5.08 (use with DJJ)		
	Check Valve, Free Flow Port 1 to Port 2 (Nose-to-Side)		
	CXHA Page 5.09 (use with DJJ)		
OTHER VALVES:			

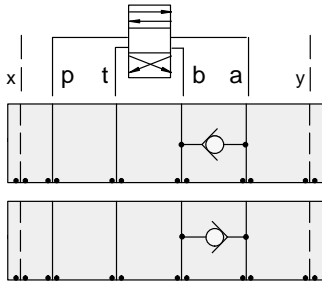
05xy CHECK



ISO 05 X,Y SANDWICH BODIES



- Aluminium rated to 210 bar and SG Iron rated to 350 bar.
- See page viii for ordering cartridge/body and seals. Pressure ratings, material specifications on page xiv.

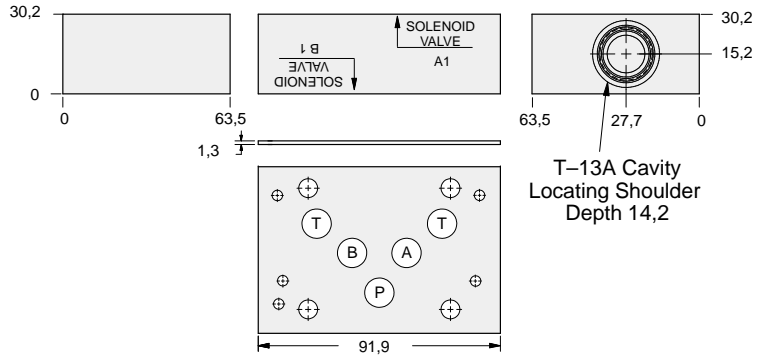


FUNCTION

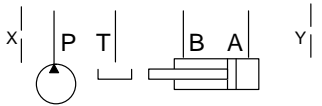
B to A

A to B

Check Valves



Order Retainer and Seal Kits separately.
(See Page 12.002)



ALUMINIUM		SG IRON	
Model Code	List Price	Model Code	List Price
DJS		DJS/S	

05xy CHECK

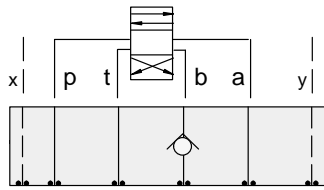
TYPICAL CARTRIDGES USED WITH BODIES SHOWN ABOVE			
	Check Valve, Free Flow Port 1 to Port 2 (Nose-to-Side)		
	CXDA Page 3.08		
OTHER VALVES:			



ISO 05 X,Y SANDWICH BODIES



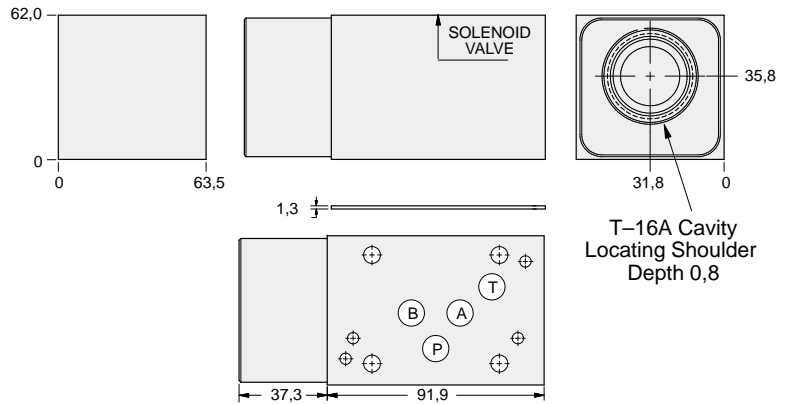
- Aluminium rated to 210 bar and SG Iron rated to 350 bar.
- See page viii for ordering cartridge/body and seals. Pressure ratings, material specifications on page xiv.



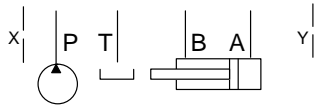
FUNCTION

On B
Free Flow **Out** of Valve
(High Capacity)

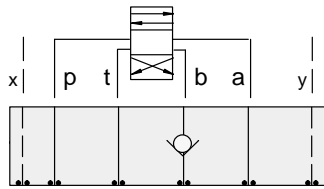
Check Valves



Order Retainer and Seal Kits separately.
(See Page 12.002)



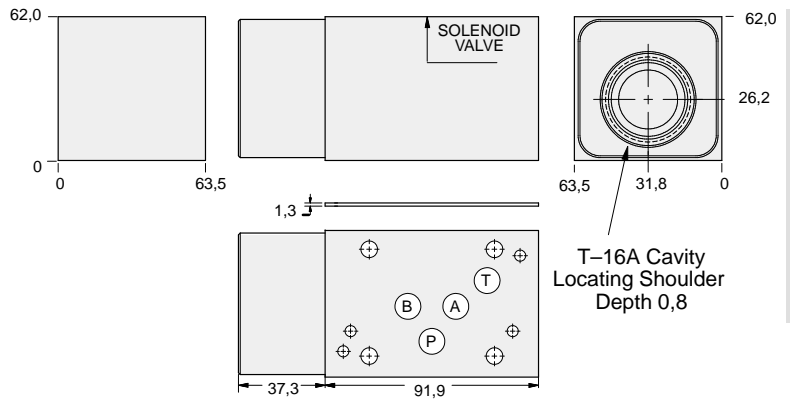
ALUMINIUM		SG IRON	
Model Code	List Price	Model Code	List Price
DJE		DJE/S	



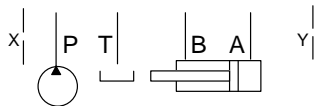
FUNCTION

On B
Free Flow **Into** Valve
(High Capacity)

Check Valves



Order Retainer and Seal Kits separately.
(See Page 12.002)



ALUMINIUM		SG IRON	
Model Code	List Price	Part Number	List Price
DJF		DJF/S	

TYPICAL CARTRIDGES USED WITH BODIES SHOWN ABOVE

	Check Valve, Free Flow Port 1 to Port 2 (Nose-to-Side)		
	CXHA Page 5.09		
OTHER VALVES:			

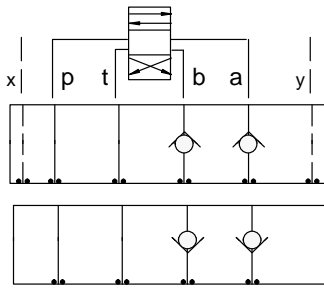
05xy CHECK



ISO 05 X,Y SANDWICH BODIES



- Aluminium rated to 210 bar and SG Iron rated to 350 bar.
- See page viii for ordering cartridge/body and seals. Pressure ratings, material specifications on page xiv.

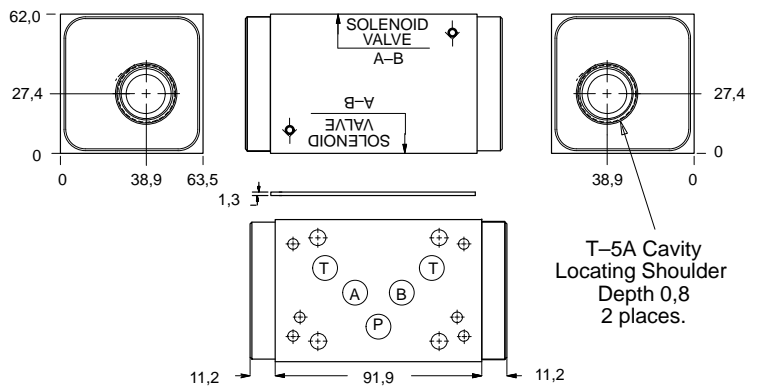


FUNCTION

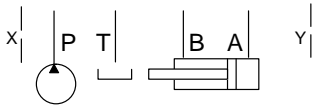
On A and B
Free Flow Out
of Valve

On A and B
Free Flow Into Valve

Check Valves

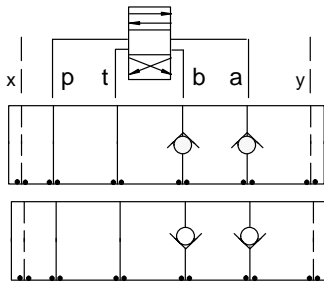


Order Retainer and Seal Kits separately.
(See Page 12.002)



ALUMINIUM		SG IRON	
Model Code	List Price	Model Code	List Price
DJL		DJL/S	

05xy CHECK

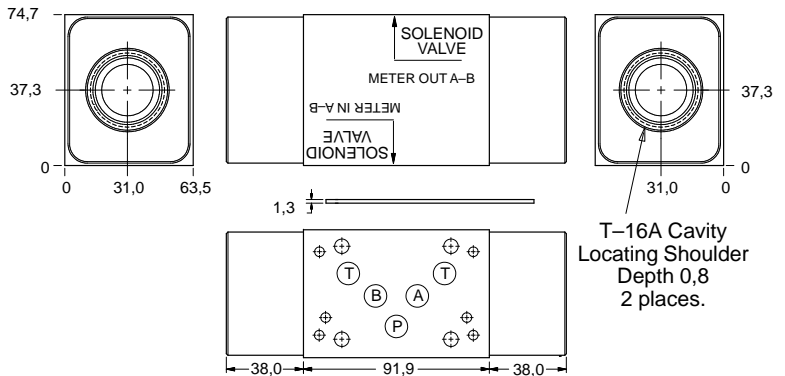


FUNCTION

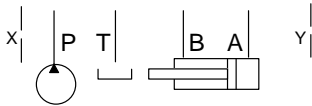
On A and B
Free Flow Out of Valve
(High Capacity)

On A and B
Free Flow Into Valve
(High Capacity)

Check Valves



Order Retainer and Seal Kits separately.
(See Page 12.002)



ALUMINIUM		SG IRON	
Model Code	List Price	Part Number	List Price
DJZ		DJZ/S	

TYPICAL CARTRIDGES USED WITH BODIES SHOWN ABOVE

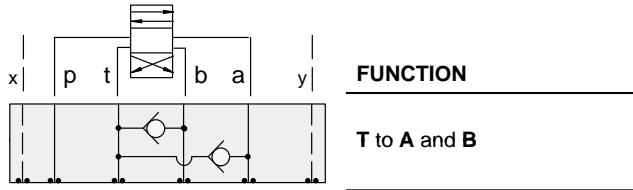
	Check Valve, Free Flow Port 1 to Port 2 (Nose-to-Side)		
	CXFA Page 5.08 (use with DJL)		
	Check Valve, Free Flow Port 1 to Port 2 (Nose-to-Side)		
	CXHA Page 5.09 (use with DJZ)		
OTHER VALVES:	NFEC, FXEA		



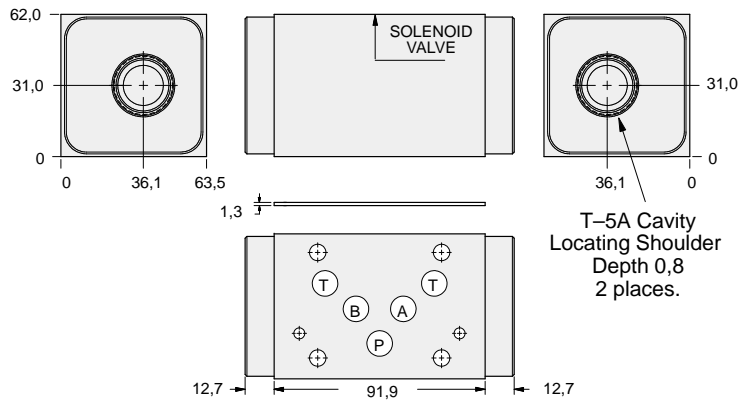
ISO 05 X,Y SANDWICH BODIES



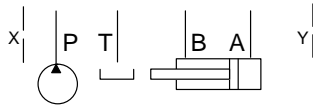
- Aluminium rated to 210 bar and SG Iron rated to 350 bar.
- See page viii for ordering cartridge/body and seals. Pressure ratings, material specifications on page xiv.



Check Valves



Order Retainer and Seal Kits separately.
(See Page 12.002)



ALUMINIUM		SG IRON	
Model Code	List Price	Model Code	List Price
DJW		DJW/S	

05xy CHECK

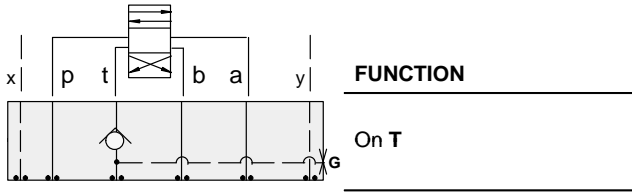
TYPICAL CARTRIDGES USED WITH BODIES SHOWN ABOVE			
	Check Valve, Free Flow Port 1 to Port 2 (Nose-to-Side)		
	CXFA Page 5.08		
OTHER VALVES:			



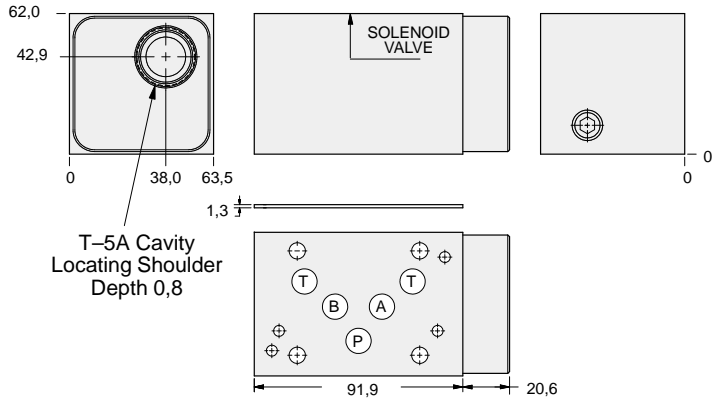
ISO 05 X,Y SANDWICH BODIES



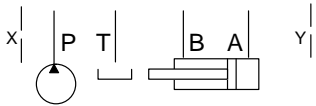
- Aluminium rated to 210 bar and SG Iron rated to 350 bar.
- See page viii for ordering cartridge/body and seals. Pressure ratings, material specifications on page xiv.



Check Valves



Order Retainer and Seal Kits separately.
(See Page 12.002)



Gauge Port (Plugged)	ALUMINIUM		SG IRON	
	Model Code	List Price	Model Code	List Price
.25 NPTF	DJT		DJT/S	
.25 BSPP	DJT/M		DJT/T	

05xy CHECK

TYPICAL CARTRIDGES USED WITH BODIES SHOWN ABOVE			
	Check Valve, Free Flow Port 1 to Port 2 (Nose-to-Side)		
	CXFA Page 5.08		
OTHER VALVES:			

