

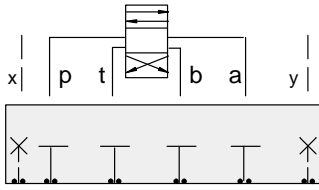


# ISO 05 X,Y SANDWICH BODIES



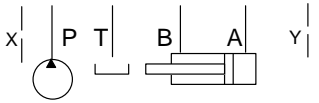
- Aluminium rated to 210 bar and SG Iron rated to 350 bar.
- See page viii for ordering cartridge/body and seals. Pressure ratings, material specifications on page xiv.

## Cover Plates

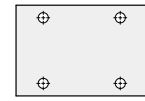


### FUNCTION

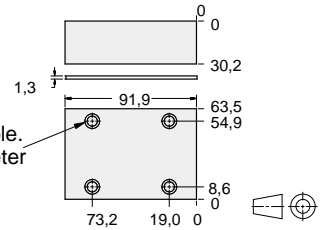
All Ports Blocked



Order Retainer and Seal Kits separately. See page 12.002

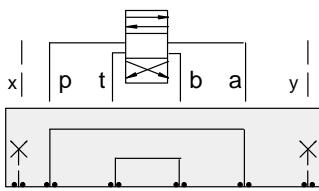


Mounting Holes: 7,1 diameter through hole. Counterbore 10,4 diameter x 20,6 deep. 4 places.



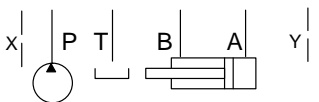
ALUMINIUM		SG IRON	
Model Code	List Price	Model Code	List Price
ZJP		ZJP/S	

## Cover Plates

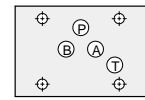


### FUNCTION

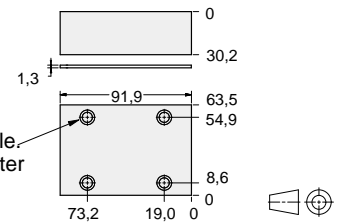
P to A and B to T



Order Retainer and Seal Kits separately. See page 12.002

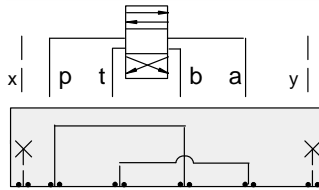


Mounting Holes: 7,1 diameter through hole. Counterbore 10,4 diameter x 20,6 deep. 4 places.



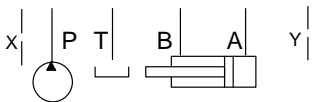
ALUMINIUM		SG IRON	
Model Code	List Price	Model Code	List Price
ZJM		ZJM/S	

## Cover Plates

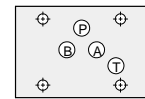


### FUNCTION

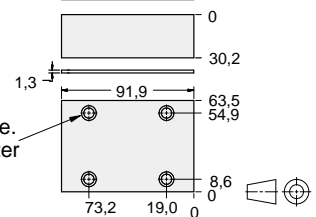
P to B and A to T



Order Retainer and Seal Kits separately. See page 12.002



Mounting Holes: 7,1 diameter through hole. Counterbore 10,4 diameter x 20,6 deep. 4 places.



ALUMINIUM		SG IRON	
Model Code	List Price	Model Code	List Price
ZJJ		ZJJ/S	

05xy COVER PLATE

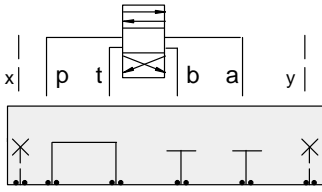


# ISO 05 X,Y SANDWICH BODIES



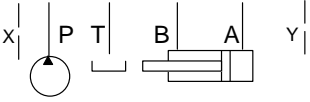
- Aluminium rated to 210 bar and SG Iron rated to 350 bar.
- See page viii for ordering cartridge/body and seals. Pressure ratings, material specifications on page xiv.

## Cover Plates



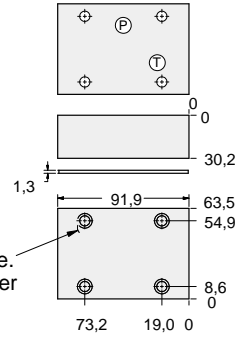
### FUNCTION

**P to T**  
**A and B** blocked



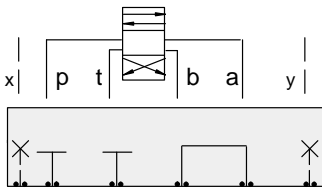
Order Retainer and Seal Kits separately. See page 12.002

Mounting Holes:  
7,1 diameter through hole.  
Counterbore 10,4 diameter  
x 20,6 deep.  
4 places.



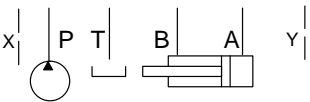
ALUMINIUM		SG IRON	
Model Code	List Price	Model Code	List Price
<b>ZJN</b>		<b>ZJN/S</b>	

## Cover Plates



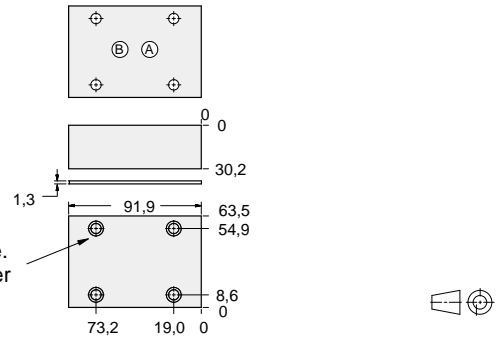
### FUNCTION

**A to B**  
**P and T** blocked



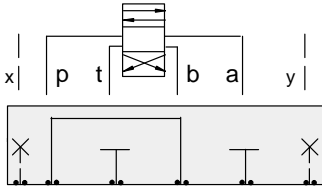
Order Retainer and Seal Kits separately. See page 12.002

Mounting Holes:  
7,1 diameter through hole.  
Counterbore 10,4 diameter  
x 20,6 deep.  
4 places.



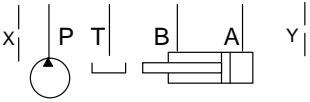
ALUMINIUM		SG IRON	
Model Code	List Price	Model Code	List Price
<b>ZJL</b>		<b>ZJL/S</b>	

## Cover Plates



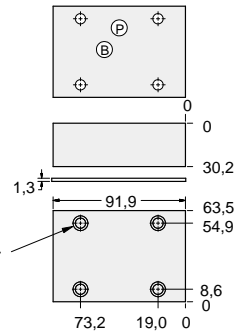
### FUNCTION

**P to B**  
**A and T** blocked



Order Retainer and Seal Kits separately. See page 12.002

Mounting Holes:  
7,1 diameter through hole.  
Counterbore 10,4 diameter  
x 20,6 deep.  
4 places.



ALUMINIUM		SG IRON	
Model Code	List Price	Model Code	List Price
<b>ZJK</b>		<b>ZJK/S</b>	

05xy COVER PLATE



