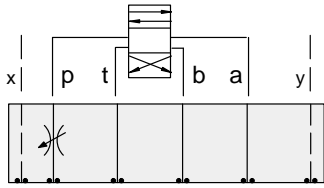




# ISO 05 X,Y SANDWICH BODIES



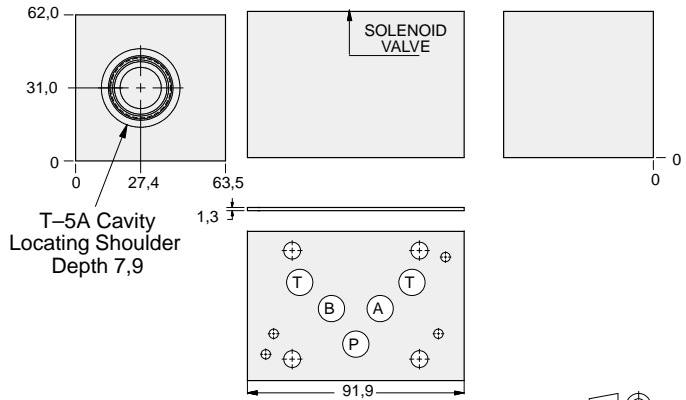
- Aluminium rated to 210 bar and SG Iron rated to 350 bar.
- See page viii for ordering cartridge/body and seals. Pressure ratings, material specifications on page xiv.



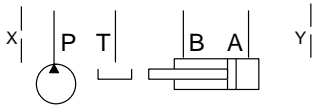
## FUNCTION

Meter-In P

## Flow Control Valves

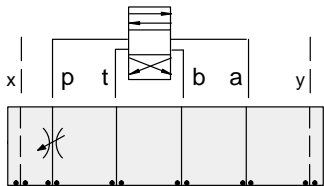


Order Retainer and Seal Kits separately.  
(See Page 12.002)



ALUMINIUM		SG IRON	
Model Code	List Price	Model Code	List Price
<b>DJP</b>		<b>DJP/S</b>	

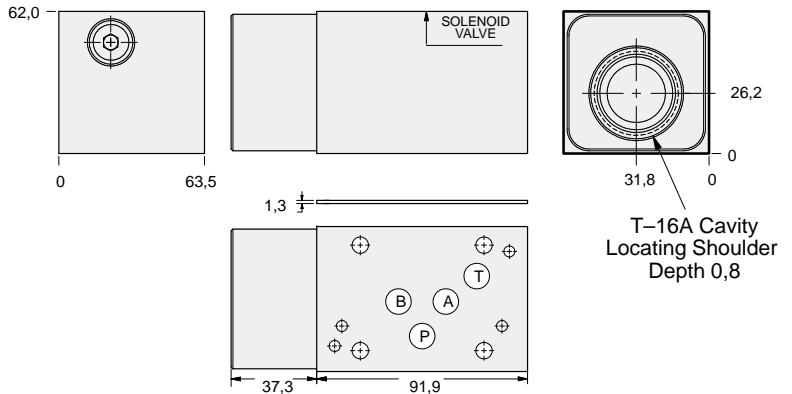
05xy FLOW CONTROL



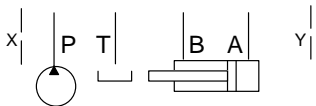
## FUNCTION

Meter-In P  
(High Capacity)

## Flow Control Valves



Order Retainer and Seal Kits separately.  
(See Page 12.002)



ALUMINIUM		SG IRON	
Model Code	List Price	Part Number	List Price
<b>DJO</b>		<b>DJO/S</b>	

### TYPICAL CARTRIDGES USED WITH BODIES SHOWN ABOVE

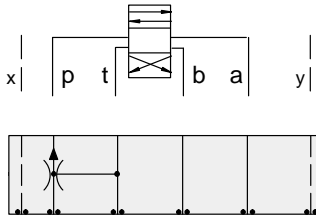
	Fully Adjustable Needle Valve		
	NF*C Page 5.12, 5.13		
	Fixed Orifice, Pressure-Compensated Flow Control		
	FX*A Page 5.20, 5.21		
OTHER VALVES:			



# ISO 05 X,Y SANDWICH BODIES



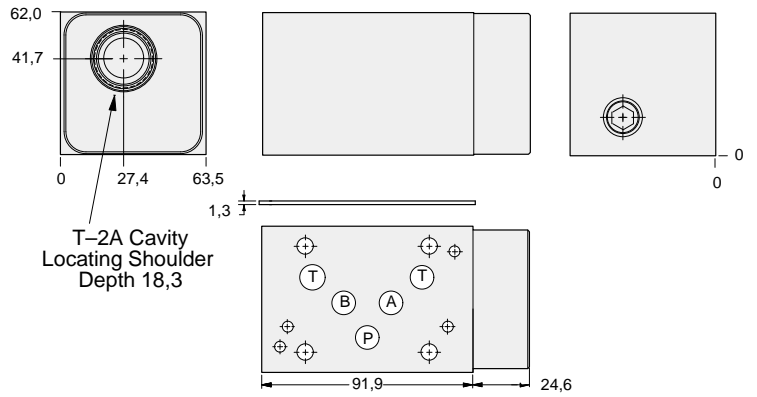
- Aluminium rated to 210 bar and SG Iron rated to 350 bar.
- See page viii for ordering cartridge/body and seals. Pressure ratings, material specifications on page xiv.



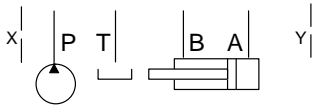
### FUNCTION

Priority Flow on P

### Flow Control Valves



Order Retainer and Seal Kits separately.  
(See Page 12.002)



ALUMINIUM		SG IRON	
Model Code	List Price	Model Code	List Price
DJN		DJN/S	

05xy FLOW CONTROL

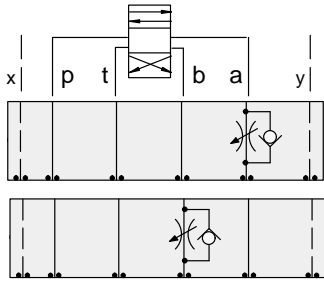
TYPICAL CARTRIDGES USED WITH BODIES SHOWN ABOVE			
	Priority Flow Control, Bypass/Restrictive, Fixed Orifice		
	FRDA Page 6.02		
OTHER VALVES:			



# ISO 05 X,Y SANDWICH BODIES



- Aluminium rated to 210 bar and SG Iron rated to 350 bar.
- See page viii for ordering cartridge/body and seals. Pressure ratings, material specifications on page xiv.

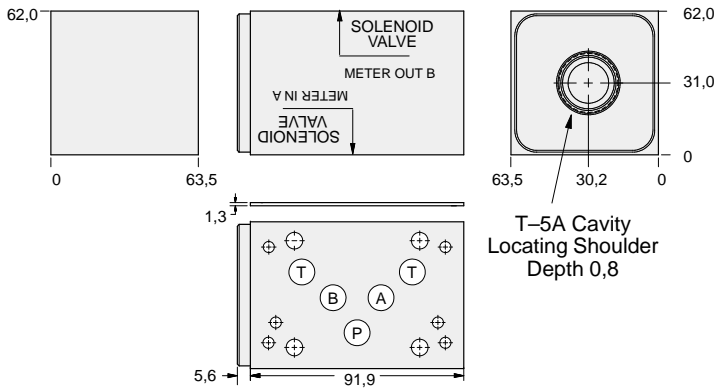


### FUNCTION

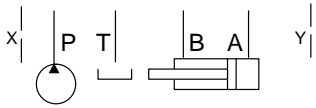
Meter-In A

Meter-Out B

### Flow Control Valves

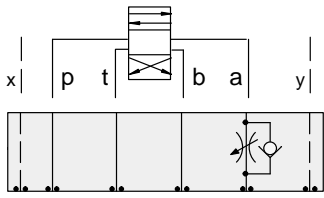


Order Retainer and Seal Kits separately.  
(See Page 12.002)



ALUMINIUM		SG IRON	
Model Code	List Price	Model Code	List Price
<b>DJB</b>		<b>DJB/S</b>	

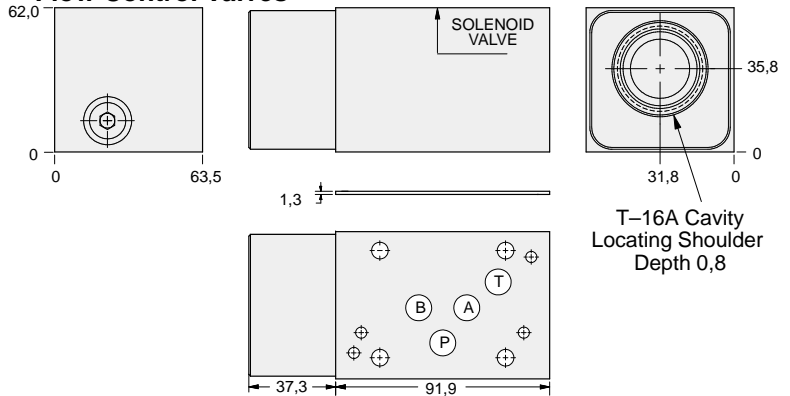
05xy FLOW CONTROL



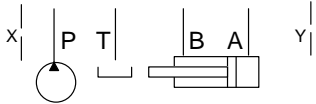
### FUNCTION

Meter-In A  
(High Capacity)

### Flow Control Valves



Order Retainer and Seal Kits separately.  
(See Page 12.002)



ALUMINIUM		SG IRON	
Model Code	List Price	Part Number	List Price
<b>DJC</b>		<b>DJC/S</b>	

### TYPICAL CARTRIDGES USED WITH BODIES SHOWN ABOVE

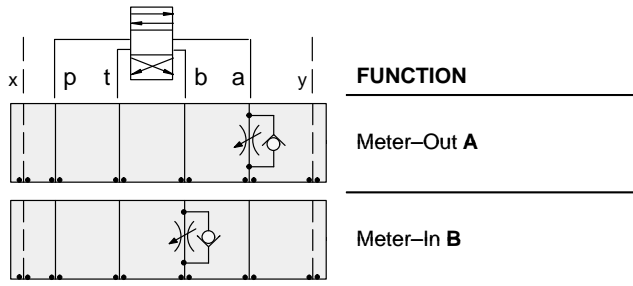
	Fully Adjustable Needle Valve		Fixed Orifice, Pressure-Compensated Flow Control
	NF*C Page 5.12, 5.13		FX*A Page 5.20, 5.21
	Fully Adjustable Needle Valve with Reverse Free Flow Check		Fixed Orifice, Pressure-Compensated Flow Control with Reverse Free Flow Check
	NC*B Page 5.16, 5.17		FC*B Page 5.22, 5.23
	Fully Adjustable Needle Valve with Reverse Free Flow Check, Low Flow		Fully Adjustable, Pressure-Compensated Flow Control with Reverse Free Flow Check
	NC*C Page 5.18, 5.19		FDCB Page 5.24, FDEA Page 5.25
OTHER VALVES:	CNEC, CNGC		



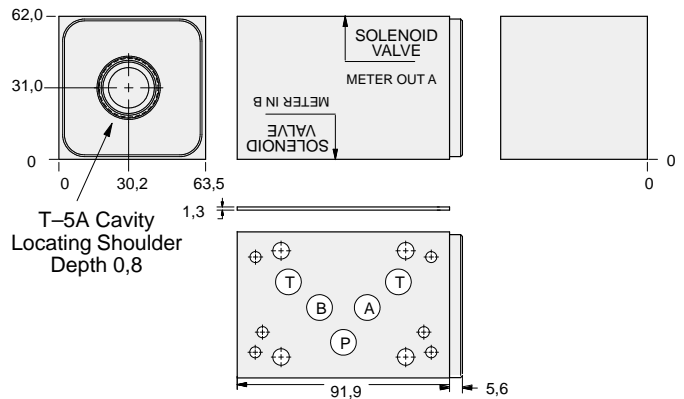
# ISO 05 X,Y SANDWICH BODIES



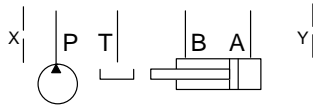
- Aluminium rated to 210 bar and SG Iron rated to 350 bar.
- See page viii for ordering cartridge/body and seals. Pressure ratings, material specifications on page xiv.



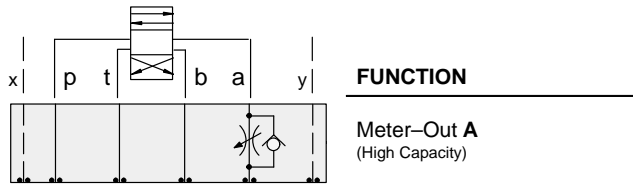
## Flow Control Valves



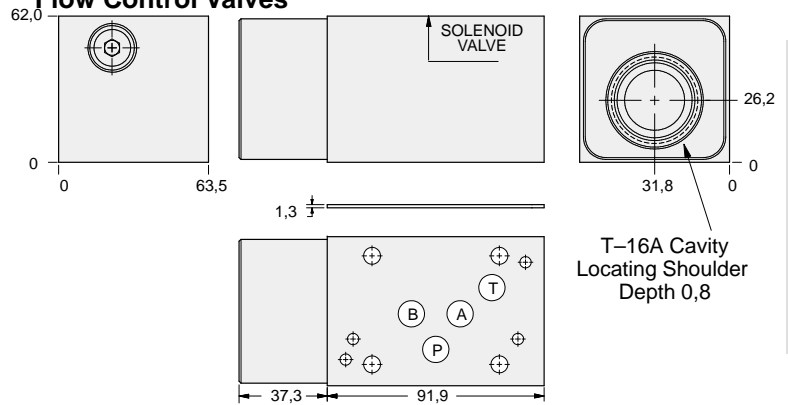
Order Retainer and Seal Kits separately.  
(See Page 12.002)



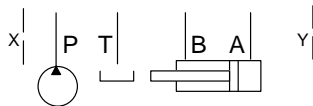
ALUMINIUM		SG IRON	
Model Code	List Price	Model Code	List Price
DJA		DJA/S	



## Flow Control Valves



Order Retainer and Seal Kits separately.  
(See Page 12.002)



ALUMINIUM		SG IRON	
Model Code	List Price	Part Number	List Price
DJD		DJD/S	

### TYPICAL CARTRIDGES USED WITH BODIES SHOWN ABOVE

	Fully Adjustable Needle Valve		Fixed Orifice, Pressure-Compensated Flow Control
	NF*C Page 5.12, 5.13		FX*A Page 5.20, 5.21
	Fully Adjustable Needle Valve with Reverse Free Flow Check		Fixed Orifice, Pressure-Compensated Flow Control with Reverse Free Flow Check
	NC*B Page 5.16, 5.17		FC*B Page 5.22, 5.23
	Fully Adjustable Needle Valve with Reverse Free Flow Check, Low Flow		Fully Adjustable, Pressure-Compensated Flow Control with Reverse Free Flow Check
	NC*C Page 5.18, 5.19		FDCB Page 5.24, FDEA Page 5.25
OTHER VALVES:	CNEC, CNGC		

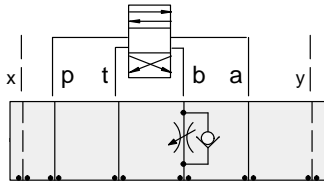
05xy FLOW CONTROL



# ISO 05 X,Y SANDWICH BODIES



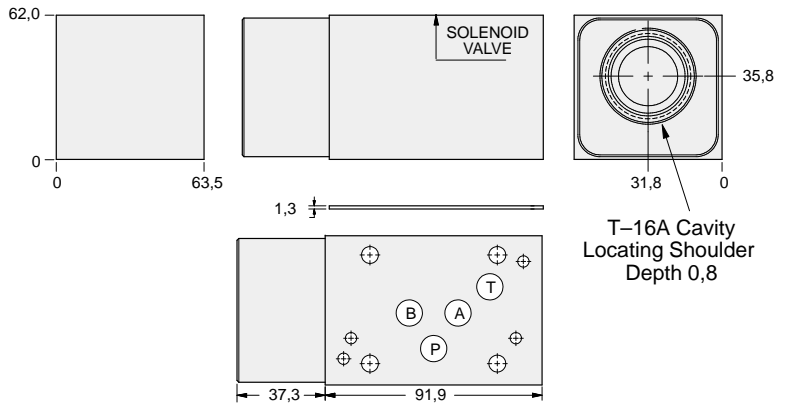
- Aluminium rated to 210 bar and SG Iron rated to 350 bar.
- See page viii for ordering cartridge/body and seals. Pressure ratings, material specifications on page xiv.



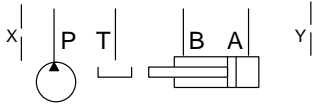
### FUNCTION

Meter-In B  
(High Capacity)

### Flow Control Valves

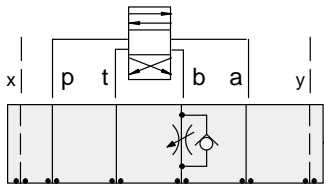


Order Retainer and Seal Kits separately.  
(See Page 12.002)



ALUMINIUM		SG IRON	
Model Code	List Price	Model Code	List Price
DJE		DJE/S	

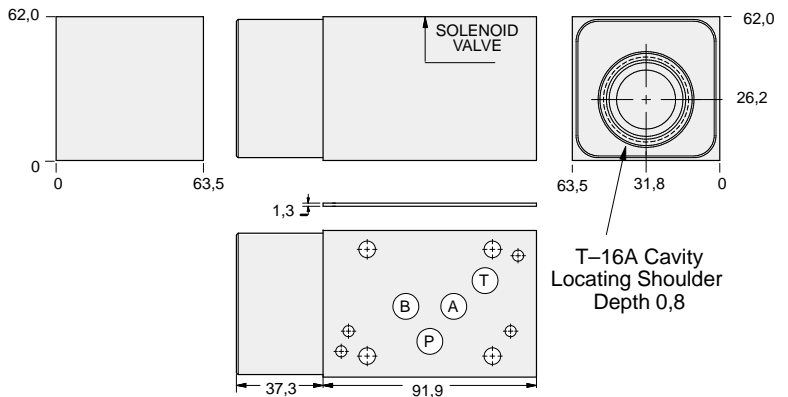
05xy FLOW CONTROL



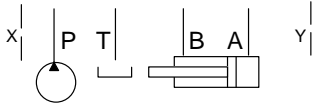
### FUNCTION

Meter-Out B  
(High Capacity)

### Flow Control Valves



Order Retainer and Seal Kits separately.  
(See Page 12.002)



ALUMINIUM		SG IRON	
Model Code	List Price	Part Number	List Price
DJF		DJF/S	

### TYPICAL CARTRIDGES USED WITH BODIES SHOWN ABOVE

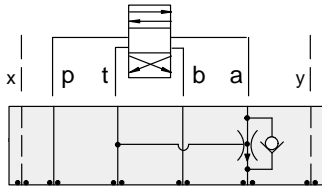
	Fully Adjustable Needle Valve		Fixed Orifice, Pressure-Compensated Flow Control
	NFEC Page 5.13		FXEA Page 5.21
	Fully Adjustable Needle Valve with Reverse Free Flow Check		Fixed Orifice, Pressure-Compensated Flow Control with Reverse Free Flow Check
	NCFB Page 5.17		FCEB Page 5.23
	Fully Adjustable Needle Valve with Reverse Free Flow Check, Low Flow		Fully Adjustable, Pressure-Compensated Flow Control with Reverse Free Flow Check
	NCFB Page 5.19		FDEA Page 5.25
OTHER VALVES:	CNGC		



# ISO 05 X,Y SANDWICH BODIES



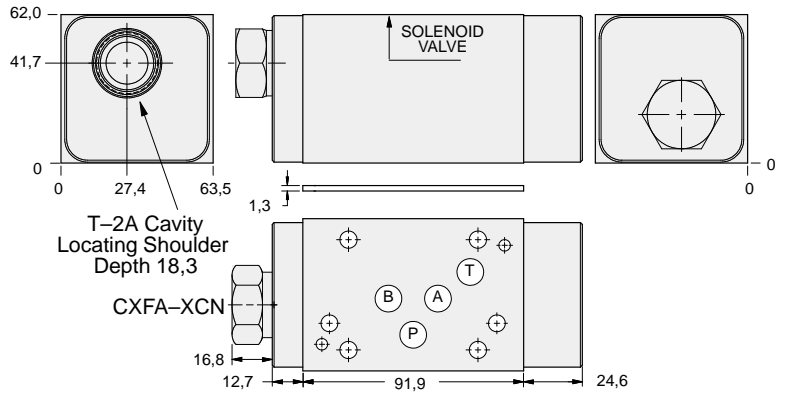
- Aluminium rated to 210 bar and SG Iron rated to 350 bar.
- See page viii for ordering cartridge/body and seals. Pressure ratings, material specifications on page xiv.



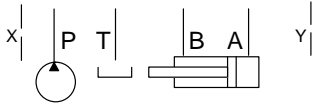
### FUNCTION

Priority Flow  
On **A**, Bypass to **T**  
Reverse FF Check

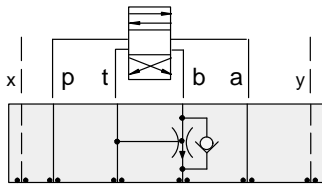
### Flow Control Valves



Order Retainer and Seal Kits separately.  
(See Page 12.002)



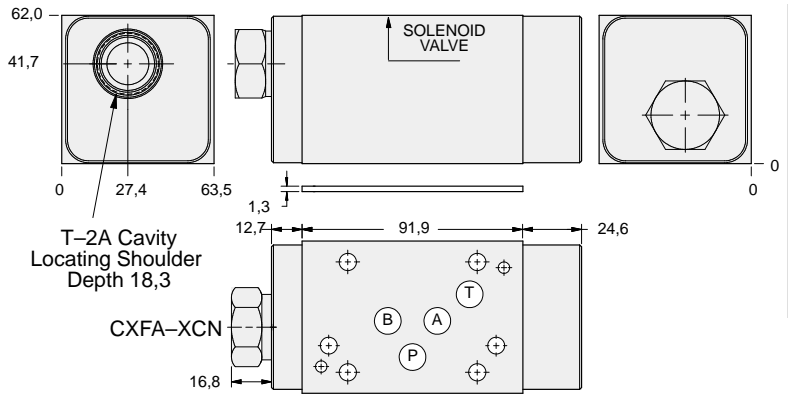
ALUMINIUM		SG IRON	
<i>Model Code</i>	<i>List Price</i>	<i>Model Code</i>	<i>List Price</i>
<b>WHY</b>		<b>WHY/S</b>	



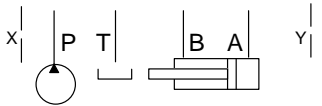
### FUNCTION

Priority Flow  
On **B**, Bypass to **T**  
Reverse FF Check

### Flow Control Valves



Order Retainer and Seal Kits separately.  
(See Page 12.002)



ALUMINIUM		SG IRON	
<i>Model Code</i>	<i>List Price</i>	<i>Part Number</i>	<i>List Price</i>
<b>WHZ</b>		<b>WHZ/S</b>	

### TYPICAL CARTRIDGES USED WITH BODIES SHOWN ABOVE

	Priority Flow Control, Bypass/Restrictive, Fixed Orifice		
	<b>FRDA Page 6.02</b>		
<b>OTHER VALVES:</b>			

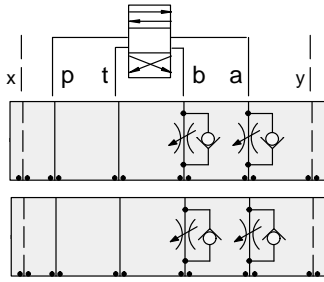
05xy FLOW CONTROL



# ISO 05 X,Y SANDWICH BODIES



- Aluminium rated to 210 bar and SG Iron rated to 350 bar.
- See page viii for ordering cartridge/body and seals. Pressure ratings, material specifications on page xiv.

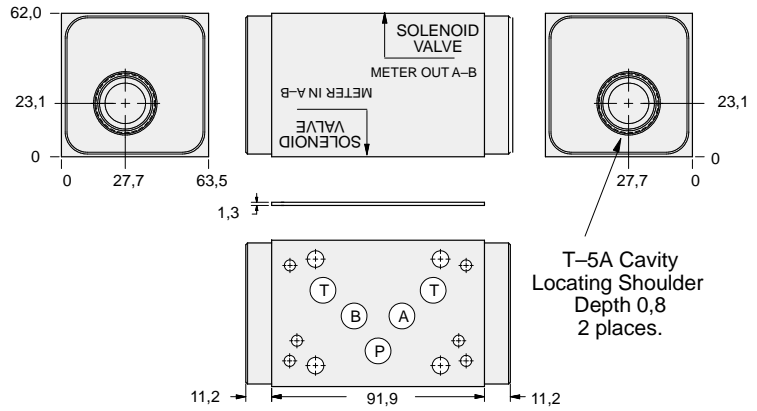


### FUNCTION

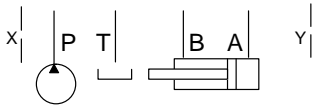
Meter-In  
A and B

Meter-Out  
A and B

### Flow Control Valves

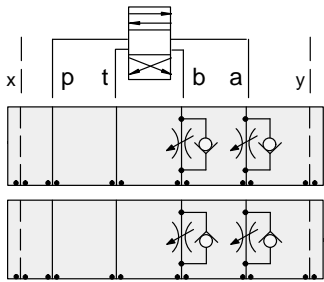


Order Retainer and Seal Kits separately.  
(See Page 12.002)



ALUMINIUM		SG IRON	
Model Code	List Price	Model Code	List Price
DJY		DJY/S	

05xy FLOW CONTROL

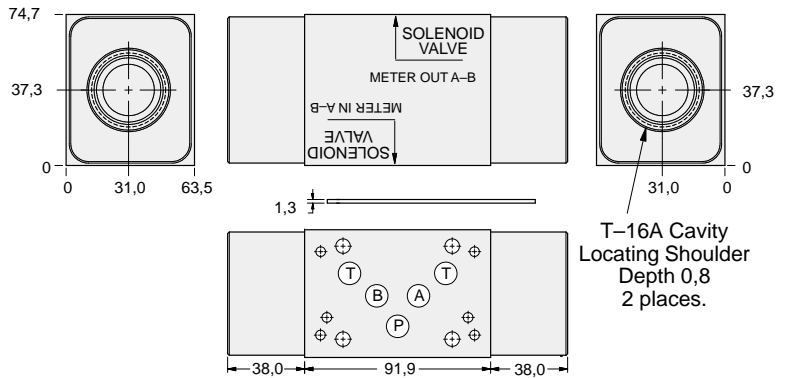


### FUNCTION

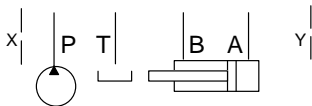
Meter-In  
A and B  
(High Capacity)

Meter-Out  
A and B  
(High Capacity)

### Flow Control Valves



Order Retainer and Seal Kits separately.  
(See Page 12.002)



ALUMINIUM		SG IRON	
Model Code	List Price	Part Number	List Price
DJZ		DJZ/S	

### TYPICAL CARTRIDGES USED WITH BODIES SHOWN ABOVE

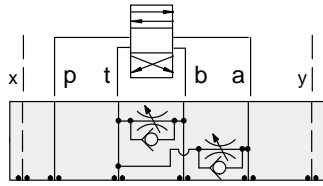
	Fully Adjustable Needle Valve		Fixed Orifice, Pressure-Compensated Flow Control
	NF*C Page 5.12, 5.13		FX*A Page 5.20, 5.21
	Fully Adjustable Needle Valve with Reverse Free Flow Check		Fixed Orifice, Pressure-Compensated Flow Control with Reverse Free Flow Check
	NC*B Page 5.16, 5.17		FC*B Page 5.22, 5.23
	Fully Adjustable Needle Valve with Reverse Free Flow Check, Low Flow		Fully Adjustable, Pressure-Compensated Flow Control with Reverse Free Flow Check
	NC*C Page 5.18, 5.19		FDCB Page 5.24, FDEA Page 5.25
OTHER VALVES:	CNEC, CNGC		



# ISO 05 X,Y SANDWICH BODIES



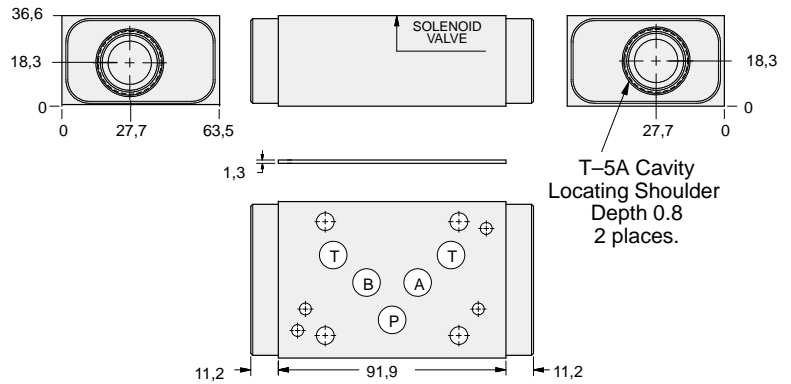
- Aluminium rated to 210 bar and SG Iron rated to 350 bar.
- See page viii for ordering cartridge/body and seals. Pressure ratings, material specifications on page xiv.



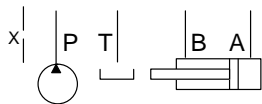
### FUNCTION

Bleed-Off  
A and B to T

### Flow Control Valves



Order Retainer and Seal Kits separately.  
(See Page 12.002)



ALUMINIUM		SG IRON	
Model Code	List Price	Model Code	List Price
<b>DJX</b>		<b>DJX/S</b>	

### TYPICAL CARTRIDGES USED WITH BODIES SHOWN ABOVE

	Fully Adjustable Needle Valve		Fixed Orifice, Pressure-Compensated Flow Control
	NFDC Page 5.12		FXDA Page 5.20
	Fully Adjustable Needle Valve with Reverse Free Flow Check		Fixed Orifice, Pressure-Compensated Flow Control with Reverse Free Flow Check
	NCEB Page 5.16		FCDB Page 5.22
	Fully Adjustable Needle Valve with Reverse Free Flow Check, Low Flow		Fully Adjustable, Pressure-Compensated Flow Control with Reverse Free Flow Check
	NCEC Page 5.18		FDCB Page 5.24
OTHER VALVES:	CNEC, CNGC		

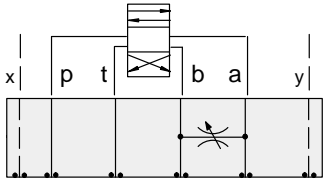




# ISO 05 X,Y SANDWICH BODIES



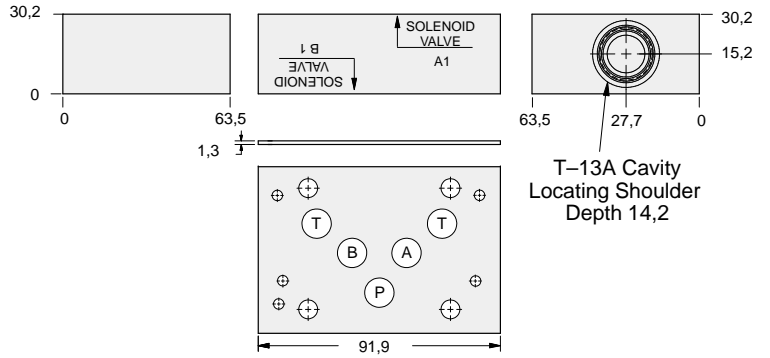
- Aluminium rated to 210 bar and SG Iron rated to 350 bar.
- See page viii for ordering cartridge/body and seals. Pressure ratings, material specifications on page xiv.



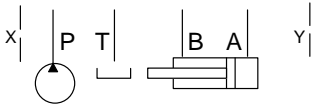
### FUNCTION

Bleed-Off  
A to B and  
B to A

### Flow Control Valves



Order Retainer and Seal Kits separately.  
(See Page 12.002)



ALUMINIUM		SG IRON	
Model Code	List Price	Model Code	List Price
DJS		DJS/S	

05xy FLOW CONTROL

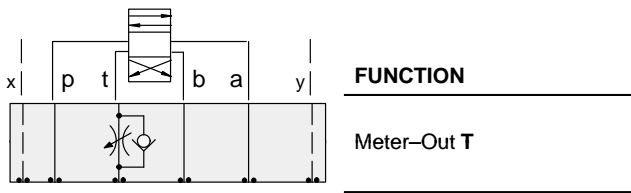
TYPICAL CARTRIDGES USED WITH BODIES SHOWN ABOVE			
	Fixed Orifice Restrictor Valve with Reverse Free Flow Check		
	NFCC Page 5.12		
OTHER VALVES:	CNCC		



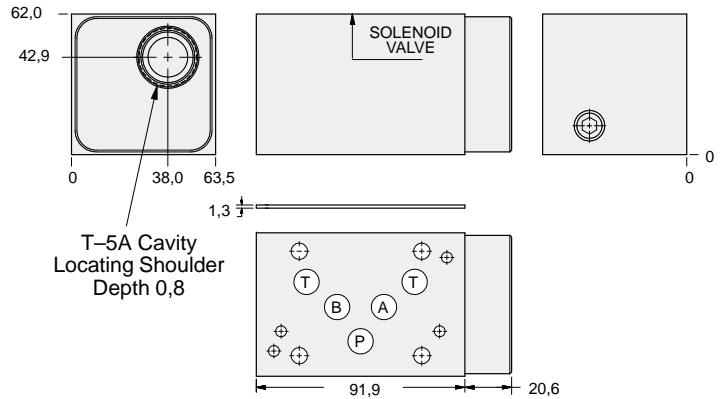
# ISO 05 X,Y SANDWICH BODIES



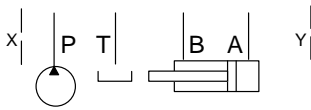
- Aluminium rated to 210 bar and SG Iron rated to 350 bar.
- See page viii for ordering cartridge/body and seals. Pressure ratings, material specifications on page xiv.



## Flow Control Valves



Order Retainer and Seal Kits separately.  
(See Page 12.002)



ALUMINIUM		SG IRON	
Model Code	List Price	Model Code	List Price
DJT		DJT/S	

TYPICAL CARTRIDGES USED WITH BODIES SHOWN ABOVE			
	Fully Adjustable Needle Valve		Fixed Orifice, Pressure-Compensated Flow Control
	NFDC Page 5.12		FXDA Page 5.20
	Fully Adjustable Needle Valve with Reverse Free Flow Check		Fixed Orifice, Pressure-Compensated Flow Control with Reverse Free Flow Check
	NCEB Page 5.16		FCDB Page 5.22
	Fully Adjustable Needle Valve with Reverse Free Flow Check, Low Flow		Fully Adjustable, Pressure-Compensated Flow Control with Reverse Free Flow Check
	NCEC Page 5.18		FDCB Page 5.24
OTHER VALVES:	CNEC		

