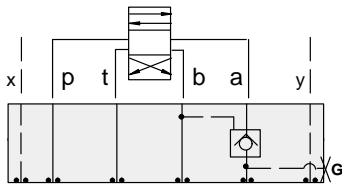




ISO 05 X,Y SANDWICH BODIES



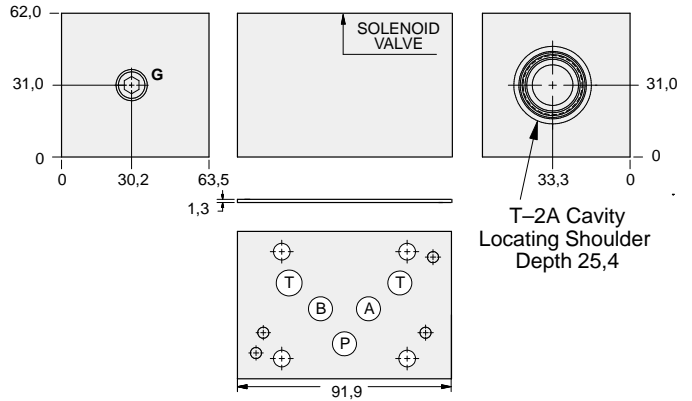
- Aluminium rated to 210 bar and SG Iron rated to 350 bar.
- See page viii for ordering cartridge/body and seals. Pressure ratings, material specifications on page xiv.



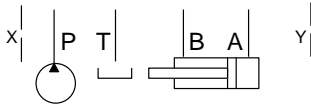
FUNCTION

On A
Pilot from B

Pilot Operated Check Valves



Order Retainer and Seal Kits separately.
(See Page 12.002)



| Gauge Port (Plugged) | ALUMINIUM | | SG IRON | |
|-------------------------|--------------|------------|--------------|------------|
| | Model Code | List Price | Model Code | List Price |
| .25 NPTF | BJA | | BJA/S | |
| .25 BSPP | BJA/M | | BJA/T | |

TYPICAL CARTRIDGES USED WITH BODIES SHOWN ABOVE

| | | | |
|----------------------|--|--|--|
| | Pilot-to-Open Check Valve, 3:1 Pilot Ratio | | |
| | CKEB Page 4.16 | | |
| | | | |
| | | | |
| OTHER VALVES: | | | |

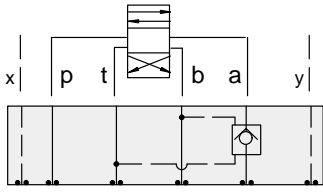


ISO 05 X,Y SANDWICH BODIES



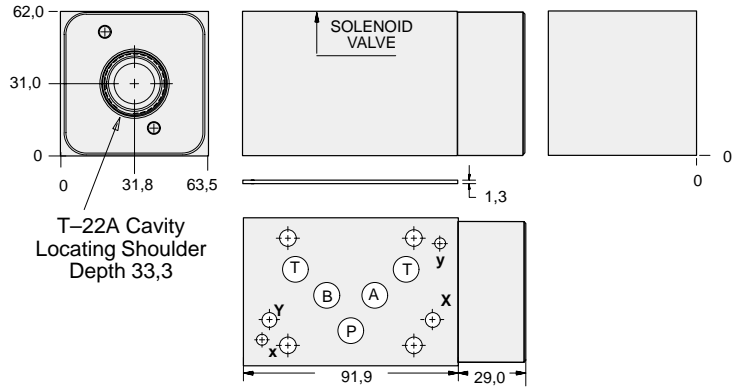
- Aluminium rated to 210 bar and SG Iron rated to 350 bar.
- See page viii for ordering cartridge/body and seals. Pressure ratings, material specifications on page xiv.

Pilot Operated Check Valves

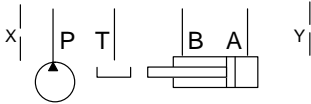


FUNCTION

On A
Pilot from B
Vent to T

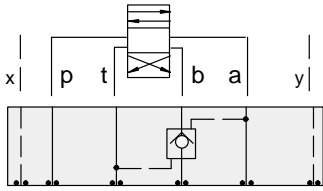


Order Retainer and Seal Kits separately.
(See Page 12.002)



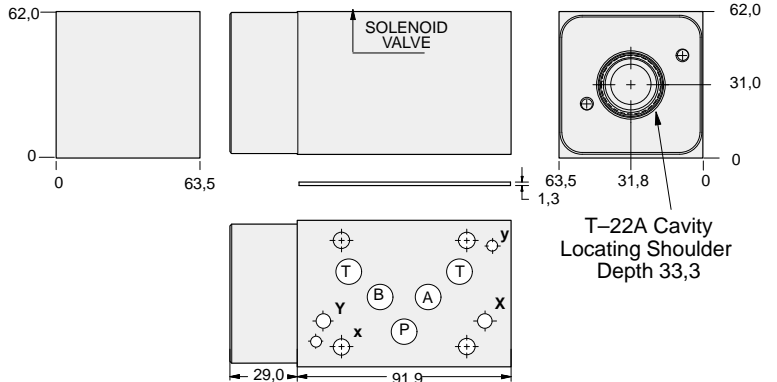
| ALUMINIUM | | SG IRON | |
|------------|------------|--------------|------------|
| Model Code | List Price | Model Code | List Price |
| NJA | | NJA/S | |

Pilot Operated Check Valves

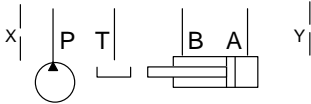


FUNCTION

On B
Pilot from A
Vent to T



Order Retainer and Seal Kits separately.
(See Page 12.002)



| ALUMINIUM | | SG IRON | |
|------------|------------|--------------|------------|
| Model Code | List Price | Part Number | List Price |
| NJB | | NJB/S | |

05xy P.O. CHECK

TYPICAL CARTRIDGES USED WITH BODIES SHOWN ABOVE

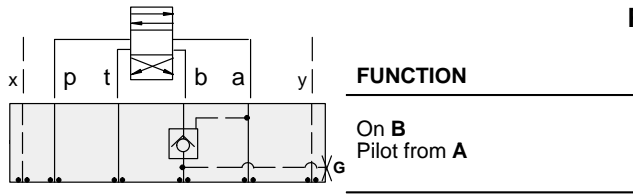
| | | | |
|----------------------|--|--|--|
| | Vented Pilot-to-Open Check Valve, 3:1 Pilot Ratio | | |
| | CVEV Page 4.22 | | |
| | | | |
| | | | |
| OTHER VALVES: | | | |



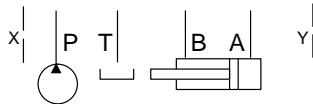
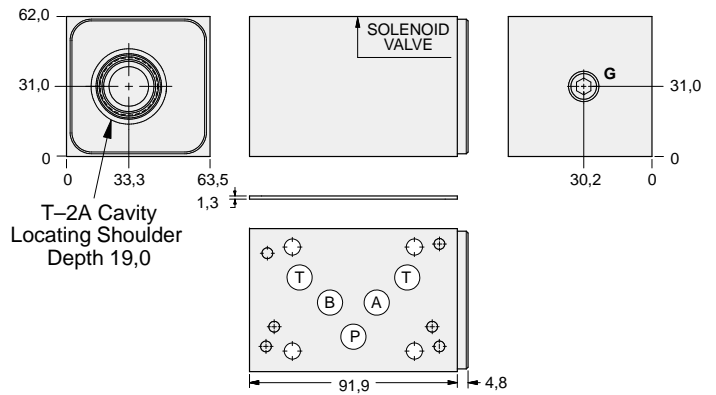
ISO 05 X,Y SANDWICH BODIES



- Aluminium rated to 210 bar and SG Iron rated to 350 bar.
- See page viii for ordering cartridge/body and seals. Pressure ratings, material specifications on page xiv.



Pilot Operated Check Valves



| Gauge Port (Plugged) | ALUMINIUM | | SG IRON | |
|-------------------------|--------------|------------|--------------|------------|
| | Model Code | List Price | Model Code | List Price |
| .25 NPTF | BJB | | BJB/S | |
| .25 BSPP | BJB/M | | BJB/T | |



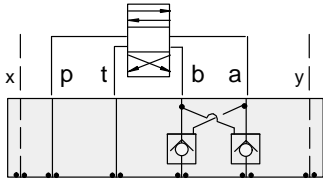
| TYPICAL CARTRIDGES USED WITH BODIES SHOWN ABOVE | | | |
|---|---|--|--|
| | <i>Pilot-to-Open Check Valve, 3:1 Pilot Ratio</i> | | |
| | CKEB Page 4.16 | | |
| | | | |
| | | | |
| OTHER VALVES: | | | |



ISO 05 X,Y SANDWICH BODIES



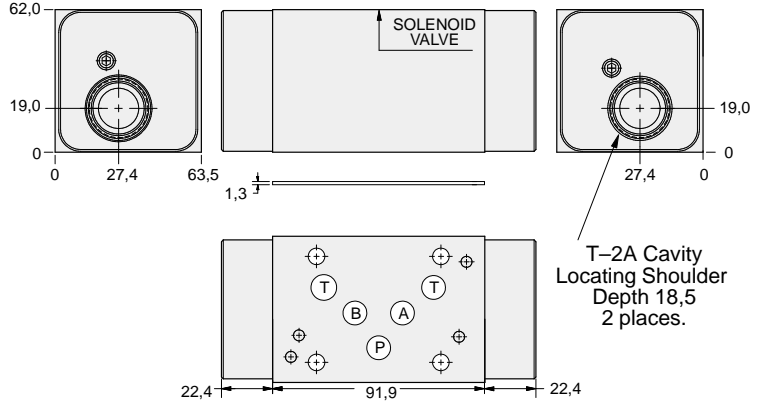
- Aluminium rated to 210 bar and SG Iron rated to 350 bar.
- See page viii for ordering cartridge/body and seals. Pressure ratings, material specifications on page xiv.



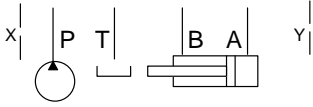
FUNCTION

On A and B
Cross-Piloted

Pilot Operated Check Valves



Order Retainer and Seal Kits separately.
(See Page 12.002)



| ALUMINIUM | | SG IRON | |
|------------|------------|--------------|------------|
| Model Code | List Price | Model Code | List Price |
| BJY | | BJY/S | |

05xy P.O. CHECK

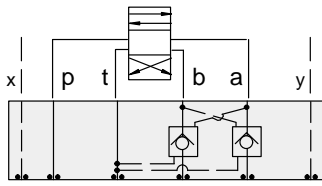
| TYPICAL CARTRIDGES USED WITH BODIES SHOWN ABOVE | | | |
|---|--|--|--|
| | Pilot-to-Open Check Valve, 3:1 Pilot Ratio | | |
| | CKEB Page 3.16 | | |
| | | | |
| | | | |
| OTHER VALVES: | | | |



ISO 05 X,Y SANDWICH BODIES



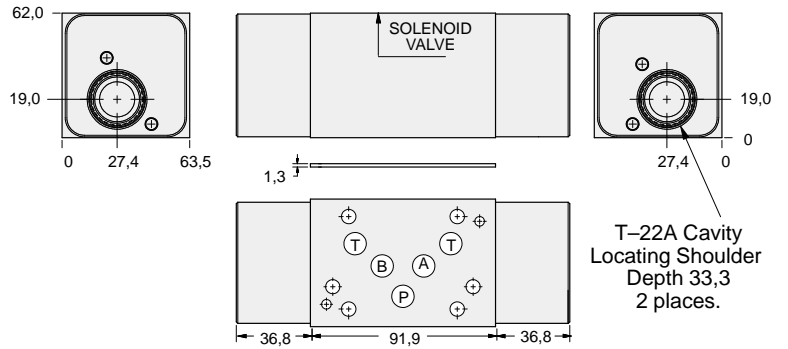
- Aluminium rated to 210 bar and SG Iron rated to 350 bar.
- See page viii for ordering cartridge/body and seals. Pressure ratings, material specifications on page xiv.



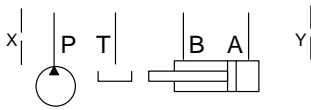
FUNCTION

On **A** and **B**
Cross-Piloted
Vents to **T**

Pilot Operated Check Valves



Order Retainer and Seal Kits separately.
(See Page 12.002)



| ALUMINIUM | | SG IRON | |
|------------|------------|--------------|------------|
| Model Code | List Price | Model Code | List Price |
| NJY | | NJY/S | |



05xy P.O. CHECK

| TYPICAL CARTRIDGES USED WITH BODIES SHOWN ABOVE | | | |
|---|--|--|--|
| | Vented Pilot-to-Open Check Valve, 3:1 Pilot Ratio | | |
| | CVEV Page 4.22 | | |
| | | | |
| | | | |
| OTHER VALVES: | | | |