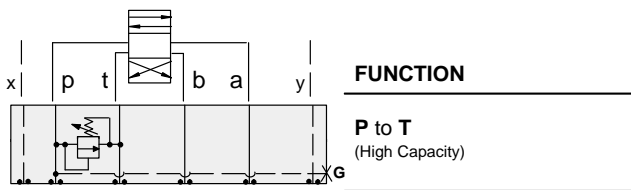




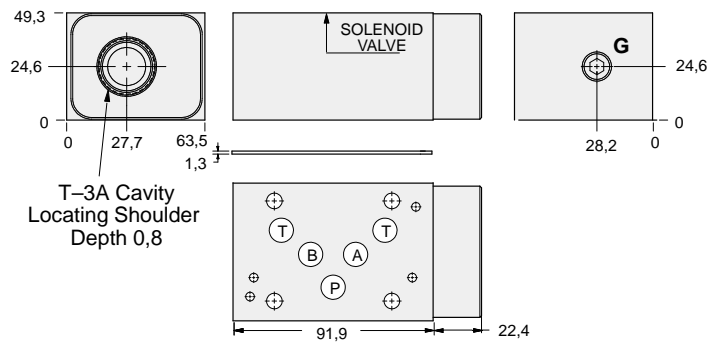
ISO 05 X,Y SANDWICH BODIES



- Aluminium rated to 210 bar and SG Iron rated to 350 bar.
- See page viii for ordering cartridge/body and seals. Pressure ratings, material specifications on page xiv.

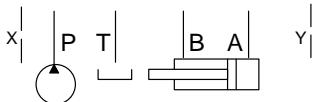


Relief Valves



Order Retainer and Seal Kits separately.
(See Page 12.002)

05xy RELIEF



Gauge Port (Plugged)	ALUMINIUM		SG IRON	
	Model Code	List Price	Part Number	List Price
.25 NPTF	CJP		CJP/S	
.25 BSPP	CJP/M		CJP/T	

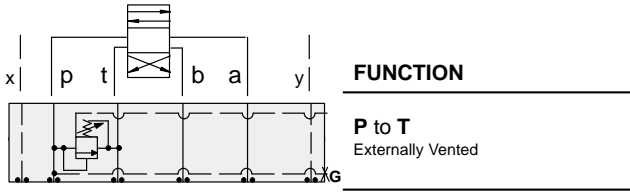
TYPICAL CARTRIDGES USED WITH BODIES SHOWN ABOVE			
	<i>Pilot Operated Relief Valve</i>		<i>Pilot Operated "Kick-Down" Relief Valve</i>
	RPGC Page 1.06		RQGB Page 1.12
	<i>Pilot Operated, Rapid Response Relief Valve</i>		<i>Air Controlled, Pilot Operated Relief Valve</i>
	RPGE Page 1.08		RPGD Page 1.14
	<i>Direct Acting Relief Valve</i>		
	RDFA Page 1.10		
OTHER VALVES:			



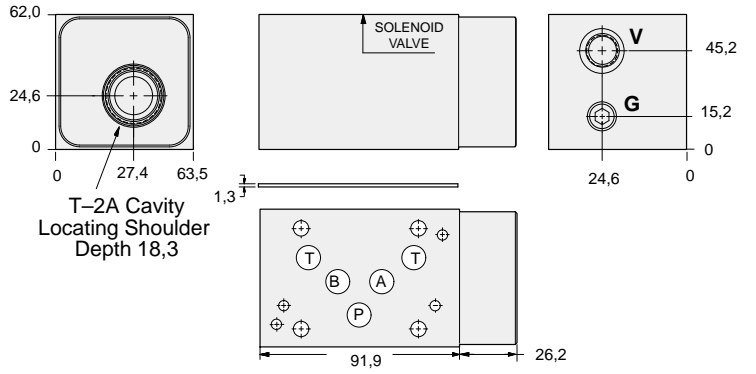
ISO 05 X,Y SANDWICH BODIES



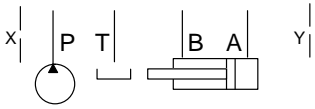
- Aluminium rated to 210 bar and SG Iron rated to 350 bar.
- See page viii for ordering cartridge/body and seals. Pressure ratings, material specifications on page xiv.



Relief Valves



Order Retainer and Seal Kits separately.
(See Page 12.002)



	Gauge Port (Plugged)	Vent Port	ALUMINIUM		SG IRON	
			Model Code	List Price	Model Code	List Price
	.25 NPTF	SAE-6	BJC		BJC/S	
	.25 BSPP	.25 BSPP	BJC/M		BJC/T	

05xy RELIEF

TYPICAL CARTRIDGES USED WITH BODIES SHOWN ABOVE

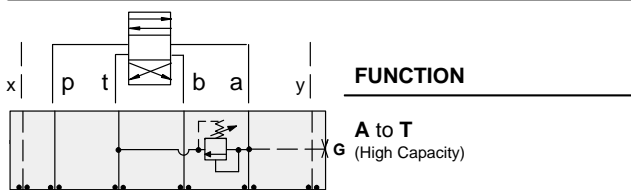
	Pilot Operated Vented Relief Valve		
	RVEA Page 1.18		
OTHER VALVES:			



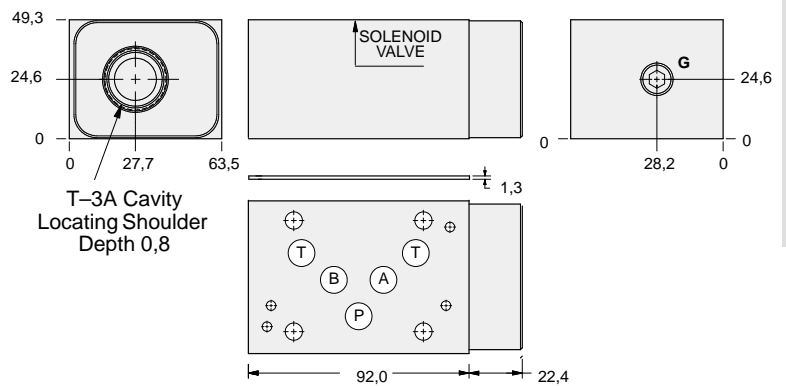
ISO 05 X,Y SANDWICH BODIES



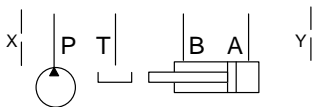
- Aluminium rated to 210 bar and SG Iron rated to 350 bar.
- See page viii for ordering cartridge/body and seals. Pressure ratings, material specifications on page xiv.



Relief Valves



Order Retainer and Seal Kits separately.
(See Page 12.002)



Gauge Port (Plugged)	ALUMINIUM		SG IRON	
	Model Code	List Price	Part Number	List Price
.25 NPTF	CJA		CJA/S	
.25 BSPP	CJA/M		CJA/T	

TYPICAL CARTRIDGES USED WITH BODIES SHOWN ABOVE

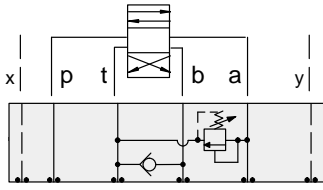
	<i>Pilot Operated Relief Valve</i>		<i>Pilot Operated "Kick-Down" Relief Valve</i>
	RPGC Page 1.06		RQGB Page 1.12
	<i>Pilot Operated, Rapid Response Relief Valve</i>		<i>Air Controlled, Pilot Operated Relief Valve</i>
	RPGE Page 1.08		RPGD Page 1.14
	<i>Direct Acting Relief Valve</i>		
	RDFA Page 1.10		
OTHER VALVES:			



ISO 05 X,Y SANDWICH BODIES



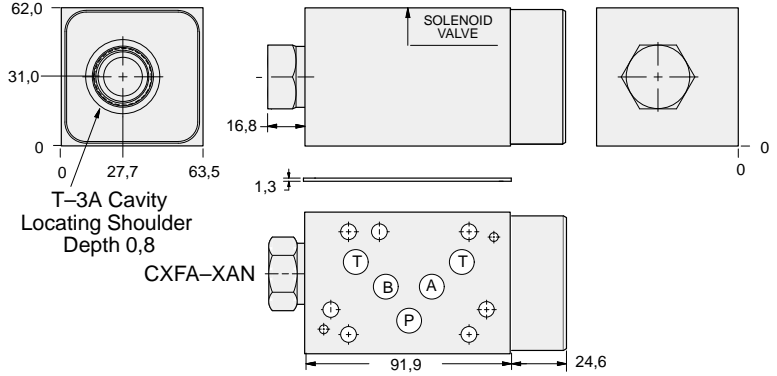
- Aluminium rated to 210 bar and SG Iron rated to 350 bar.
- See page viii for ordering cartridge/body and seals. Pressure ratings, material specifications on page xiv.



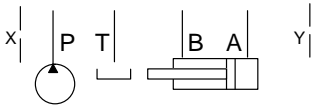
FUNCTION

A to T
FF Check T to B

Relief Valves



Order Retainer and Seal Kits separately.
(See Page 12.002)



ALUMINIUM		SG IRON	
Model Code	List Price	Model Code	List Price
CJ2		CJ2/S	

05xy RELIEF

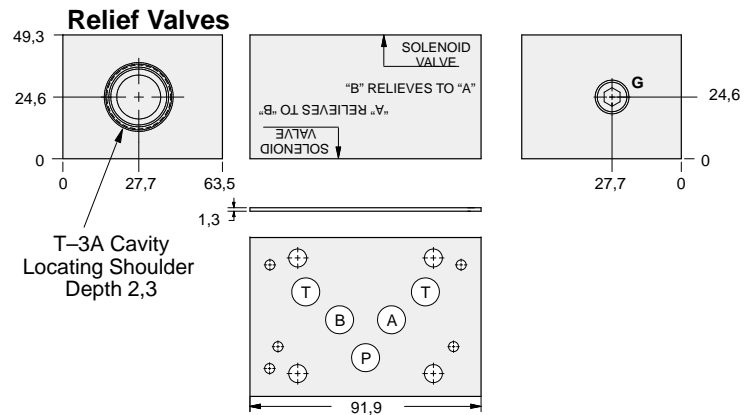
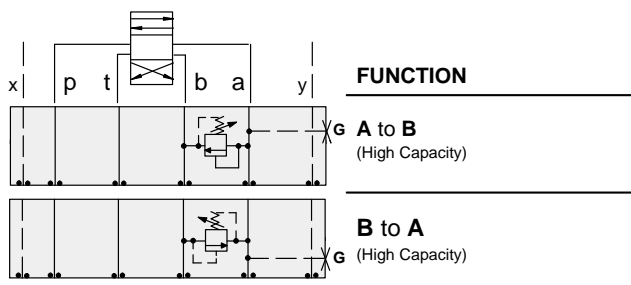
TYPICAL CARTRIDGES USED WITH BODIES SHOWN ABOVE			
	<i>Pilot Operated Relief Valve</i> RPGC Page 1.06		<i>Pilot Operated "Kick-Down" Relief Valve</i> RQGB Page 1.12
	<i>Pilot Operated, Rapid Response Relief Valve</i> RPGE Page 1.08		<i>Air Controlled, Pilot Operated Relief Valve</i> RPGD Page 1.14
	<i>Direct Acting Relief Valve</i> RDFA Page 1.10		
OTHER VALVES:			



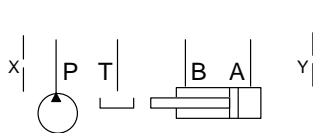
ISO 05 X,Y SANDWICH BODIES



- Aluminium rated to 210 bar and SG Iron rated to 350 bar.
- See page viii for ordering cartridge/body and seals. Pressure ratings, material specifications on page xiv.



Order Retainer and Seal Kits separately.
(See Page 12.002)



Gauge Port (Plugged)	ALUMINIUM		SG IRON	
	Model Code	List Price	Part Number	List Price
.25 NPTF	CJC		CJC/S	
.25 BSPP	CJC/M		CJC/T	

TYPICAL CARTRIDGES USED WITH BODIES SHOWN ABOVE			
	Pilot Operated Relief Valve		Pilot Operated "Kick-Down" Relief Valve
	RPGC Page 1.06		RQGB Page 1.12
	Pilot Operated, Rapid Response Relief Valve		Air Controlled, Pilot Operated Relief Valve
	RPGE Page 1.08		RPGD Page 1.14
	Direct Acting Relief Valve		
	RDFA Page 1.10		
OTHER VALVES:			

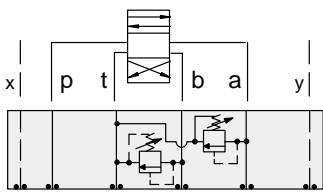


ISO 05 X,Y SANDWICH BODIES



- Aluminium rated to 210 bar and SG Iron rated to 350 bar.
- See page viii for ordering cartridge/body and seals. Pressure ratings, material specifications on page xiv.

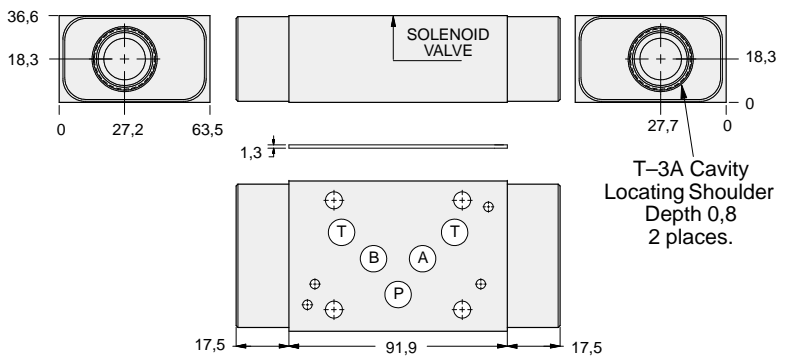
05xy RELIEF



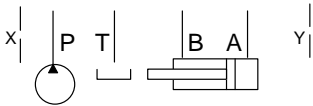
FUNCTION

A and B to T
(High Capacity)

Relief Valves



Order Retainer and Seal Kits separately.
(See Page 12.002)



ALUMINIUM		SG IRON	
Model Code	List Price	Part Number	List Price
CJX		CJX/S	

TYPICAL CARTRIDGES USED WITH BODIES SHOWN ABOVE

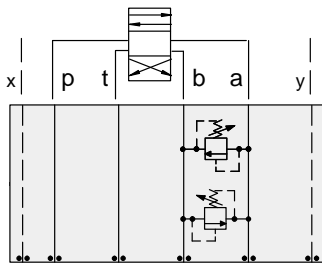
	<i>Pilot Operated Relief Valve</i>		<i>Pilot Operated "Kick-Down" Relief Valve</i>
	RPGC Page 1.06		RQGB Page 1.12
	<i>Pilot Operated, Rapid Response Relief Valve</i>		<i>Air Controlled, Pilot Operated Relief Valve</i>
	RPGE Page 1.08		RPGD Page 1.14
	<i>Direct Acting Relief Valve</i>		
	RDFA Page 1.10		
OTHER VALVES:			



ISO 05 X,Y SANDWICH BODIES



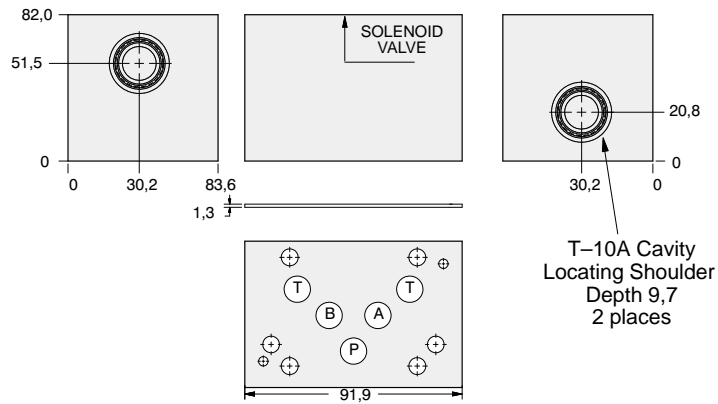
- Aluminium rated to 210 bar and SG Iron rated to 350 bar.
- See page viii for ordering cartridge/body and seals. Pressure ratings, material specifications on page xiv.



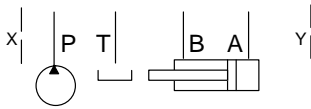
FUNCTION

**A to B and
B to A**
(Cross Port)

Relief Valves



Order Retainer and Seal Kits separately.
(See Page 12.002)



ALUMINIUM		SG IRON	
Model Code	List Price	Model Code	List Price
CJY		CJY/S	

05xy RELIEF

TYPICAL CARTRIDGES USED WITH BODIES SHOWN ABOVE			
	<i>Pilot Operated Relief Valve</i>		<i>Pilot Operated "Kick-Down" Relief Valve</i>
	RPEC Page 1.06		RQEB Page 1.12
	<i>Pilot Operated, Rapid Response Relief Valve</i>		
	RPEE Page 1.08		
	<i>Direct Acting Relief Valve</i>		
	RDDA Page 1.10		
OTHER VALVES:			

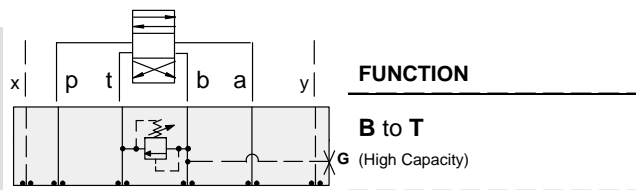


ISO 05 X,Y SANDWICH BODIES



- Aluminium rated to 210 bar and SG Iron rated to 350 bar.
- See page viii for ordering cartridge/body and seals. Pressure ratings, material specifications on page xiv.

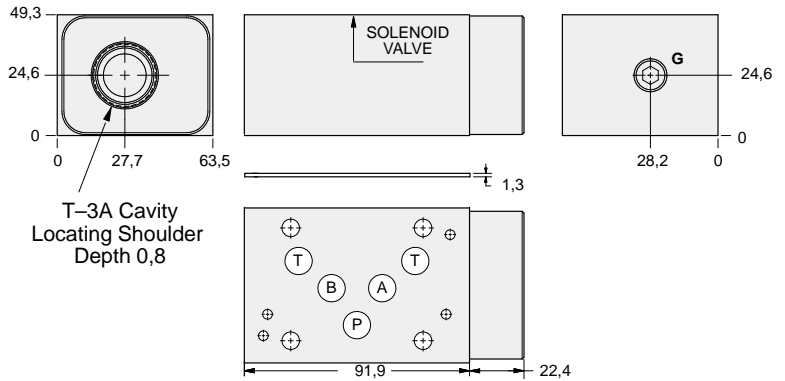
05xy RELIEF



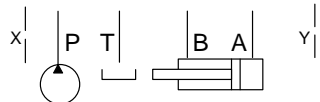
FUNCTION

B to T
G (High Capacity)

Relief Valves



Order Retainer and Seal Kits separately.
(See Page 12.002)



Gauge Port (Plugged)	ALUMINIUM		SG IRON	
	Model Code	List Price	Part Number	List Price
.25 NPTF	CJB		CJB/S	
.25 BSPP	CJB/M		CJB/T	

TYPICAL CARTRIDGES USED WITH BODIES SHOWN ABOVE

	Pilot Operated Relief Valve RPGC Page 1.06		Pilot Operated "Kick-Down" Relief Valve RQGB Page 1.12
	Pilot Operated, Rapid Response Relief Valve RPGE Page 1.08		Air Controlled, Pilot Operated Relief Valve RPGD Page 1.14
	Direct Acting Relief Valve RDFA Page 1.10		
OTHER VALVES:			