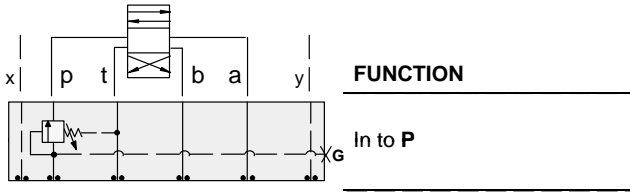




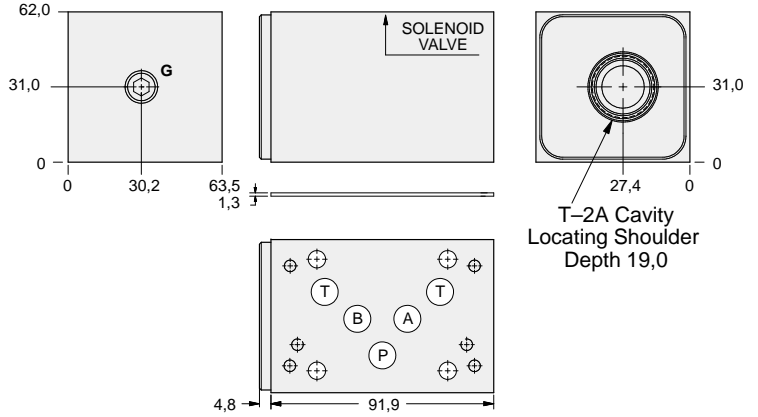
ISO 05 X,Y SANDWICH BODIES



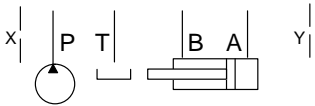
- Aluminium rated to 210 bar and SG Iron rated to 350 bar.
- See page viii for ordering cartridge/body and seals. Pressure ratings, material specifications on page xiv.



Sequence Valves



Order Retainer and Seal Kits separately.
(See Page 12.002)



Gauge Port (Plugged)	ALUMINIUM		SG IRON	
	Model Code	List Price	Model Code	List Price
.25 NPTF	BJW		BJW/S	
.25 BSPP	BJW/M		BJW/T	

05xy SEQUENCE

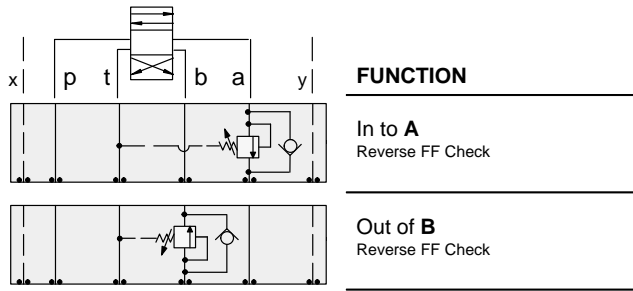
TYPICAL CARTRIDGES USED WITH BODIES SHOWN ABOVE			
	<i>Pilot Operated Sequence Valve</i>		<i>Direct Acting Sequence Valve with Reverse Free Flow Check</i>
	RSFC Page 2.06		SCEA Page 2.12
	<i>Pilot Operated "Kick-Down" Sequence Valve</i>		
	SQFB Page 2.08		
	<i>Air Controlled, Pilot Operated Sequence Valve</i>		
	RSFE Page 2.10		
OTHER VALVES:			



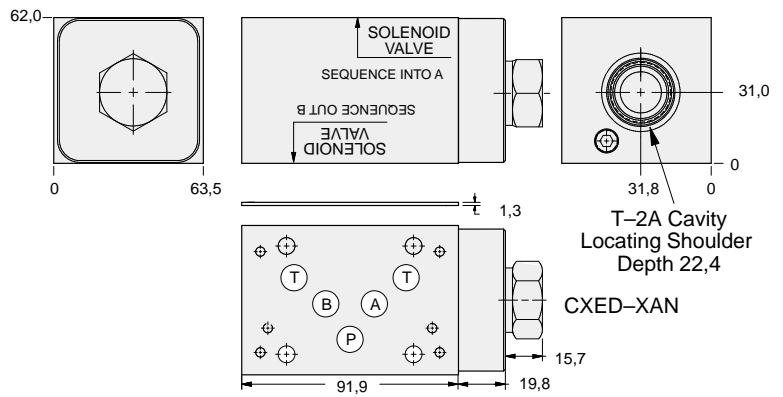
ISO 05 X,Y SANDWICH BODIES



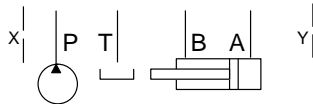
- Aluminium rated to 210 bar and SG Iron rated to 350 bar.
- See page viii for ordering cartridge/body and seals. Pressure ratings, material specifications on page xiv.



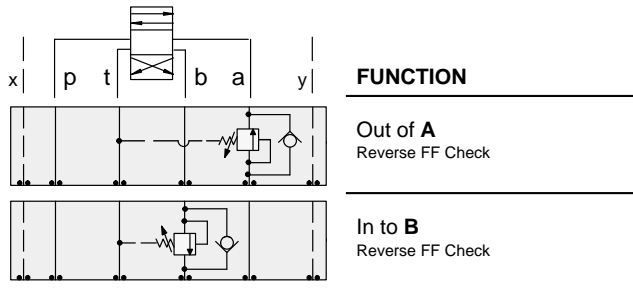
Sequence Valves



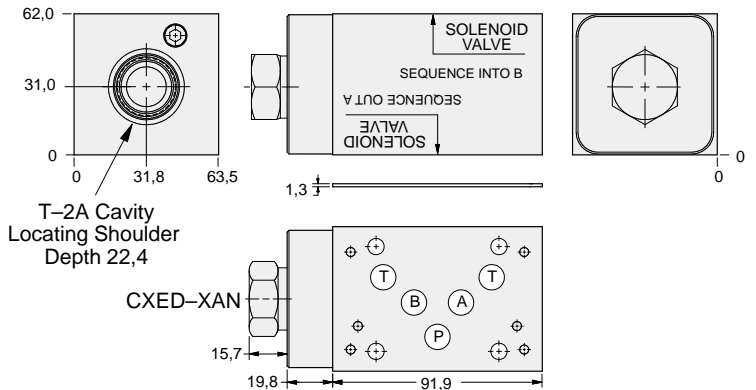
Order Retainer and Seal Kits separately.
(See Page 12.002)



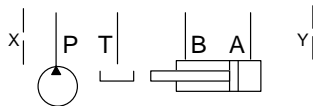
ALUMINIUM		SG IRON	
Model Code	List Price	Model Code	List Price
BJ4		BJ4/S	



Sequence Valves



Order Retainer and Seal Kits separately.
(See Page 12.002)



ALUMINIUM		SG IRON	
Model Code	List Price	Part Number	List Price
BJ5		BJ5/S	

TYPICAL CARTRIDGES USED WITH BODIES SHOWN ABOVE

	Pilot Operated Sequence Valve		
	RSFC Page 2.06		
	Pilot Operated "Kick-Down" Sequence Valve		
	SQFB Page 2.08		
	Air Controlled, Pilot Operated Sequence Valve		
	RSFE Page 2.10		
OTHER VALVES:			