



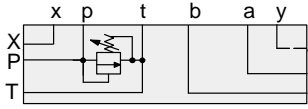
ISO 05 X,Y SANDWICH BODIES



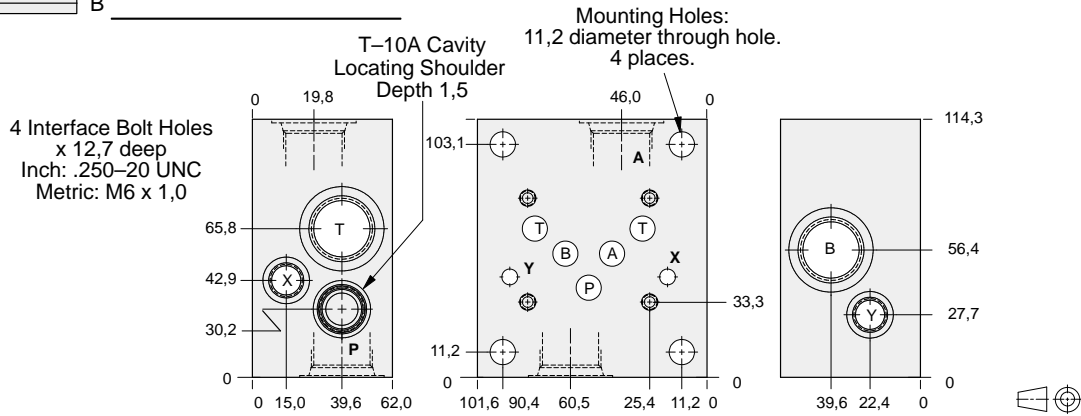
- Aluminium rated to 210 bar and SG Iron rated to 350 bar.
- See page viii for ordering cartridge/body and seals. Pressure ratings, material specifications on page xiv.

Side Ported Subplates

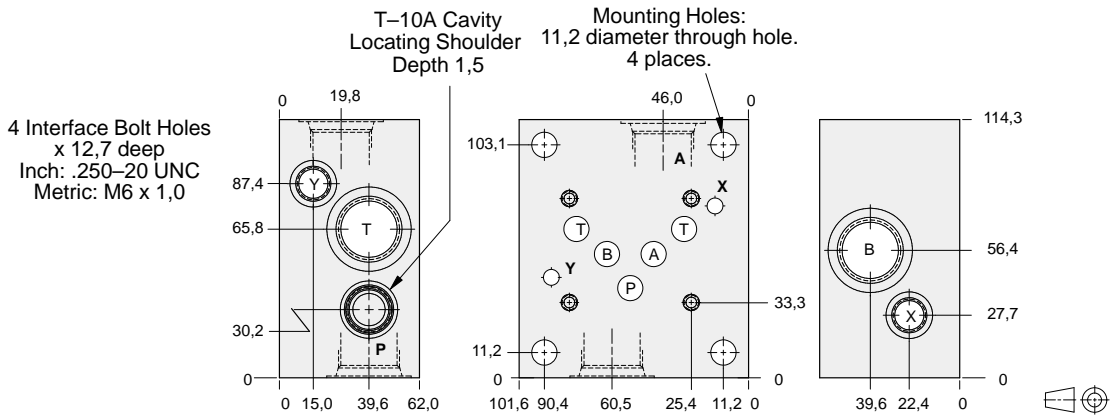
FUNCTION



Relief P to T



CETOP VERSION



U.S. VERSION

Bolt Hole Interface	Port A,B,P,T	Port X,Y	ALUMINIUM			SG IRON		
			Model Code U.S.	Model Code CETOP	List Price	Model Code U.S.	Model Code CETOP	List Price
Inch	.50 NPTF	.25 NPTF	ZHH	ZHP		ZHH/S	ZHP/S	
Inch	.75 NPTF	.25 NPTF	ZHJ	ZHQ		ZHJ/S	ZHQ/S	
Inch	SAE-10	SAE-6	ZHK	ZHR		ZHK/S	ZHR/S	
Inch	SAE-12	SAE-6	ZHL	ZHS		ZHL/S	ZHS/S	
Metric	.50 BSPP	.25 BSPP	ZHM	ZHT		ZHM/S	ZHT/S	
Metric	.75 BSPP	.25 BSPP	ZHN	ZHV		ZHN/S	ZHV/S	

TYPICAL CARTRIDGES USED WITH BODIES SHOWN ABOVE

	Pilot Operated Relief Valve		Direct Acting Relief Valve
	RPEC Page 1.06		RDDA Page 1.10
	Pilot Operated, Rapid Response Relief Valve		Pilot Operated "Kick-Down" Relief Valve
	RPEE Page 1.08		RQEB Page 1.12