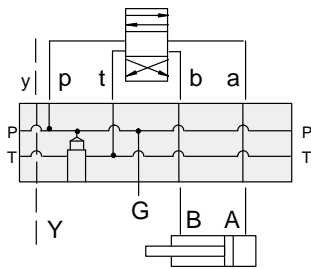




BAR MANIFOLDS

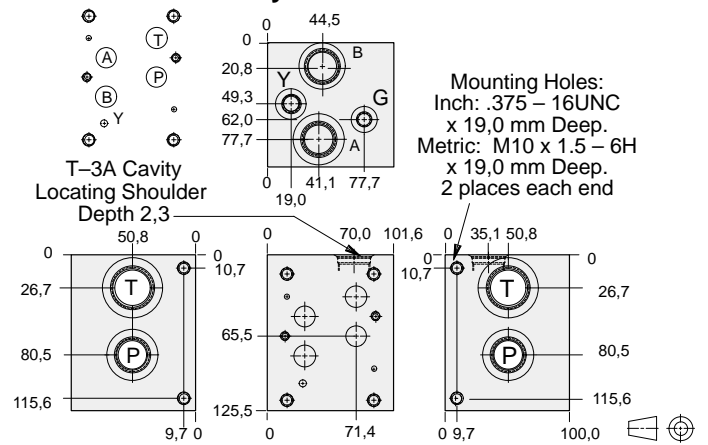


- Aluminium rated to 210 bar and SG Iron rated to 350 bar.
- See page viii for ordering cartridge/body and seals. Pressure ratings, material specifications on page xiv.



ISO 07 Parallel Circuit with Relief Cavity and Y Port

FUNCTION
One Station



Mounting Holes	Port T	Ports A, B, P	Port Y	Gauge Port	ALUMINIUM		SG IRON	
					Model Code	List Price	Model Code	List Price
inch	1.00 NPTF	.75 NPTF	.25 NPTF	.25 NPTF	VLA		VLA/S	
inch	SAE-16	SAE-12	SAE-6	SAE-4	VLE		VLE/S	
metric	1.00 BSPP	.75 BSPP	.25 BSPP	.25 BSPP	VLJ		VLJ/S	

Bar Manifold Mounting Kits to be ordered separately. See page 12.087.

TYPICAL CARTRIDGES USED WITH BODIES SHOWN ABOVE			
	Pilot Operated Relief Valve		Direct Acting Relief Valve
	RPGC Page 1.06		RDFA Page 1.10
OTHER VALVES:			

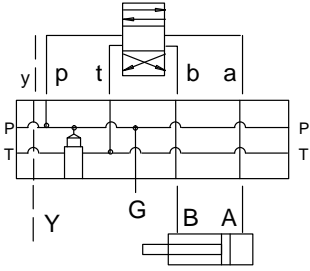


BAR MANIFOLDS



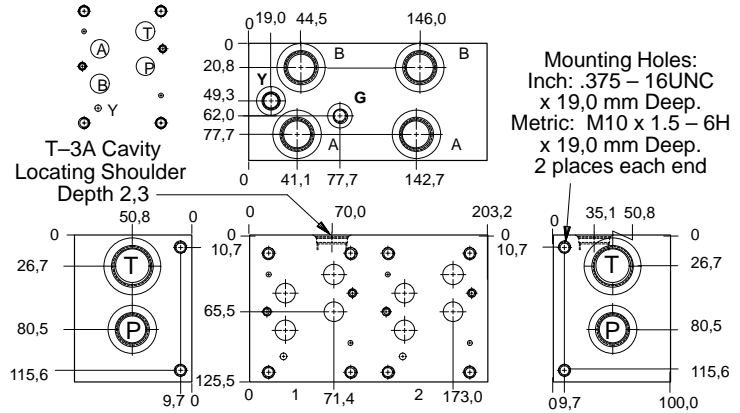
- Aluminium rated to 210 bar and SG Iron rated to 350 bar.
- See page viii for ordering cartridge/body and seals. Pressure ratings, material specifications on page xiv.

ISO 07 Parallel Circuit with Relief Cavity and Y Port



FUNCTION

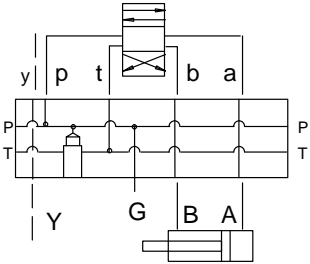
Two Station



Mounting Holes	Port T	Ports A, B, P	Port Y	Gauge Port	ALUMINIUM		SG IRON	
					Model Code	List Price	Model Code	List Price
inch	1.00 NPTF	.75 NPTF	.25 NPTF	.25 NPTF	VLB		VLB/S	
inch	SAE-16	SAE-12	SAE-6	SAE-4	VLF		VLF/S	
metric	1.00 BSPP	.75 BSPP	.25 BSPP	.25 BSPP	VLK		VLK/S	

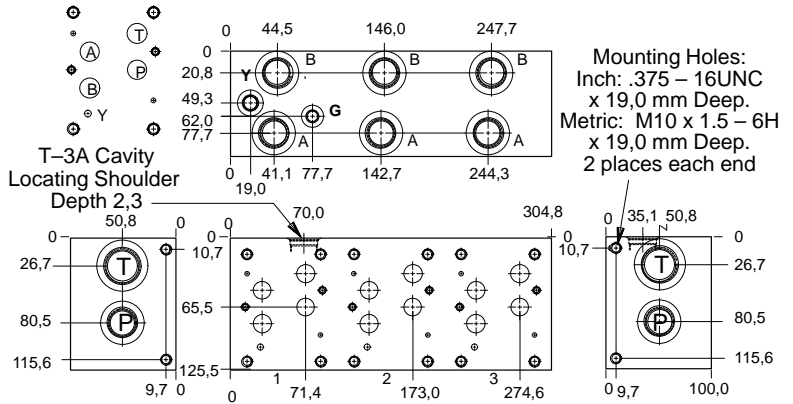
Bar Manifold Mounting Kits to be ordered separately. See page 12.087.

ISO 07 Parallel Circuit with Relief Cavity and Y Port



FUNCTION

Three Station



Mounting Holes	Port T	Ports A, B, P	Port Y	Gauge Port	ALUMINIUM		SG IRON	
					Model Code	List Price	Model Code	List Price
inch	1.00 NPTF	.75 NPTF	.25 NPTF	.25 NPTF	VLC		VLC/S	
inch	SAE-16	SAE-12	SAE-6	SAE-4	VLG		VLG/S	
metric	1.00 BSPP	.75 BSPP	.25 BSPP	.25 BSPP	VLL		VLL/S	

Bar Manifold Mounting Kits to be ordered separately. See page 12.087.

TYPICAL CARTRIDGES USED WITH BODIES SHOWN ABOVE

	Pilot Operated Relief Valve		Direct Acting Relief Valve
	RPGC Page 1.06		RDFA Page 1.10
OTHER VALVES:			