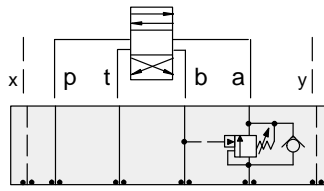




ISO 07 SANDWICH BODIES



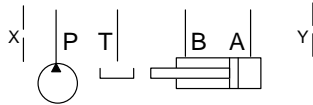
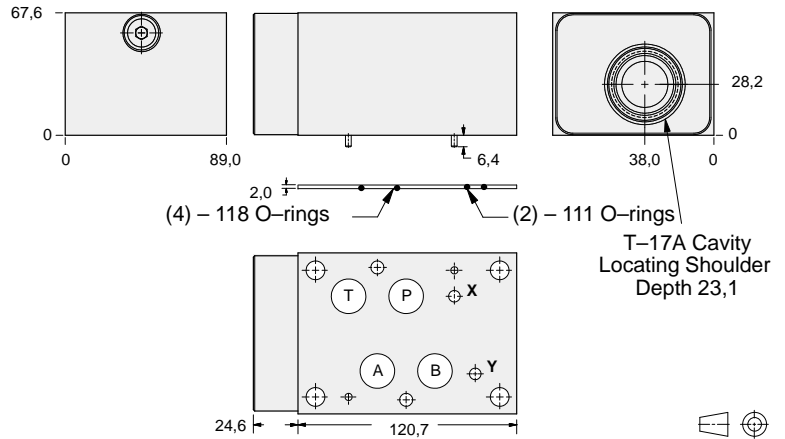
- Aluminium rated to 210 bar and SG Iron rated to 350 bar.
- See page viii for ordering cartridge/body and seals. Pressure ratings, material specifications on page xiv.



FUNCTION

On A Pilot from B

Counterbalance Valves



ALUMINIUM		SG IRON	
Model Code	List Price	Model Code	List Price
BKA		BKA/S	

TYPICAL CARTRIDGES USED WITH BODIES SHOWN ABOVE

	Counterbalance Valve, 3:1 Pilot Ratio		
	CBGAP Page 4.11		
	Counterbalance Valve, 4.5:1 Pilot Ratio		
	CBGG Page 4.13		
	Counterbalance Valve, 10:1 Pilot Ratio		
	CBGHP Page 4.15		
OTHER VALVES:			

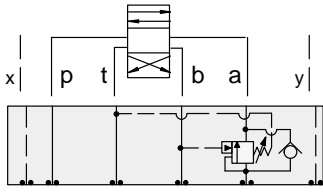


ISO 07 SANDWICH BODIES



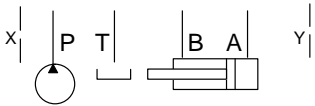
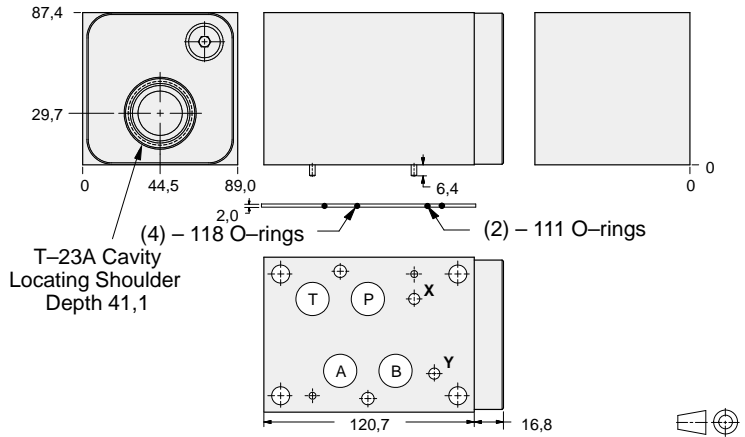
- Aluminium rated to 210 bar and SG Iron rated to 350 bar.
- See page viii for ordering cartridge/body and seals. Pressure ratings, material specifications on page xiv.

Counterbalance Valves



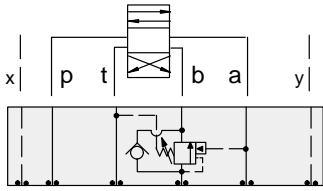
FUNCTION

On **A** Pilot
from **B**
Vent to **T**



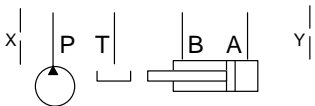
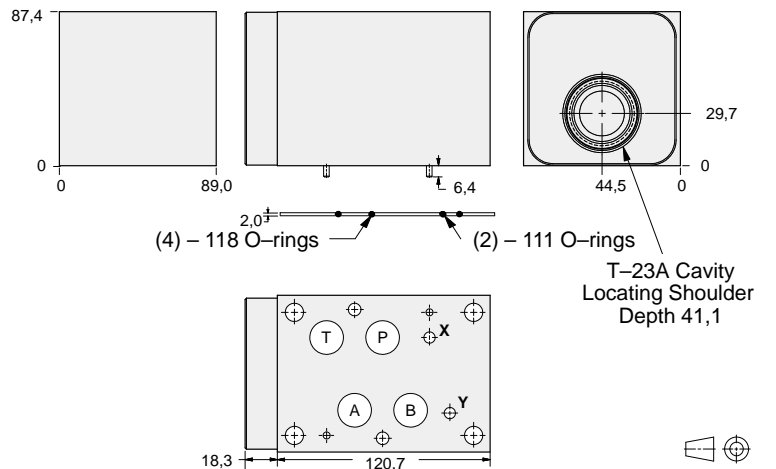
ALUMINIUM		SG IRON	
Model Code	List Price	Model Code	List Price
NKA		NKA/S	

Counterbalance Valves



FUNCTION

On **B** Pilot
from **A**
Vent to **T**



ALUMINIUM		SG IRON	
Model Code	List Price	Part Number	List Price
NKB		NKB/S	

07 COUNTERBALANCE

TYPICAL CARTRIDGES USED WITH BODIES SHOWN ABOVE

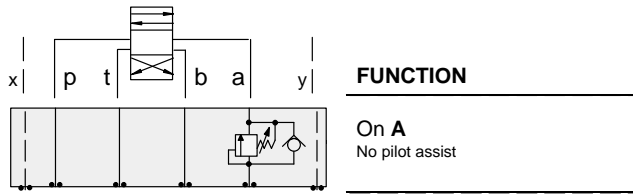
	Vented Counterbalance Valve, 3:1 Pilot Ratio		
	CWGA Page 4.19		
	Vented Counterbalance Valve, 5:1 Pilot Ratio		
	CWGG Page 4.21		
OTHER VALVES:			



ISO 07 SANDWICH BODIES



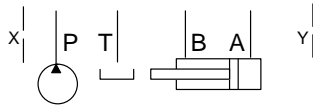
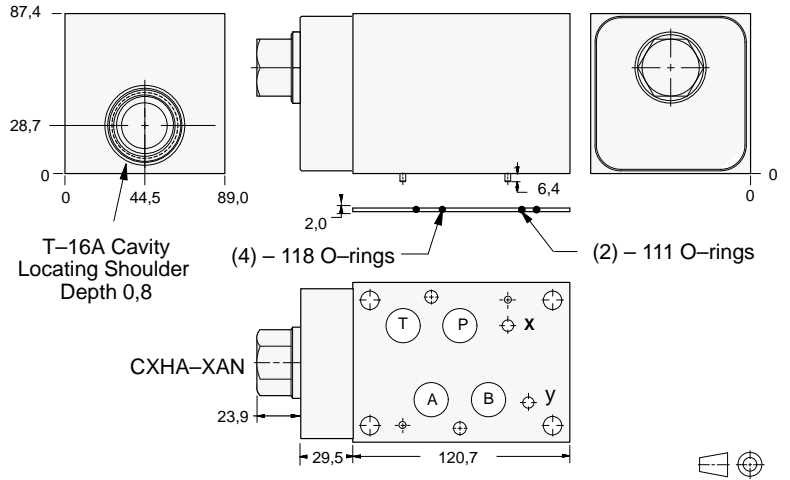
- Aluminium rated to 210 bar and SG Iron rated to 350 bar.
- See page viii for ordering cartridge/body and seals. Pressure ratings, material specifications on page xiv.



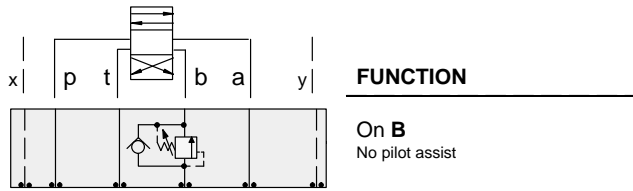
FUNCTION

On A
No pilot assist

Counterbalance Valves



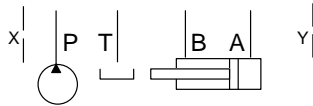
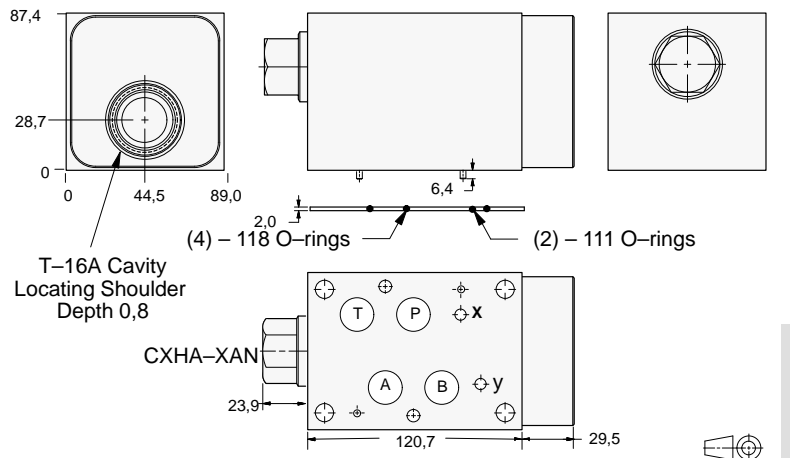
ALUMINIUM		SG IRON	
Model Code	List Price	Model Code	List Price
CK4		CK4/S	



FUNCTION

On B
No pilot assist

Counterbalance Valves



ALUMINIUM		SG IRON	
Model Code	List Price	Part Number	List Price
CK5		CK5/S	

TYPICAL CARTRIDGES USED WITH BODIES SHOWN ABOVE

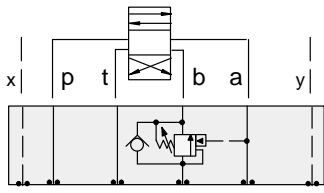
	Direct Acting Relief Valve		
	RDHA Page 1.11		
OTHER VALVES:			



ISO 07 SANDWICH BODIES



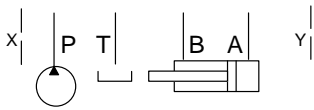
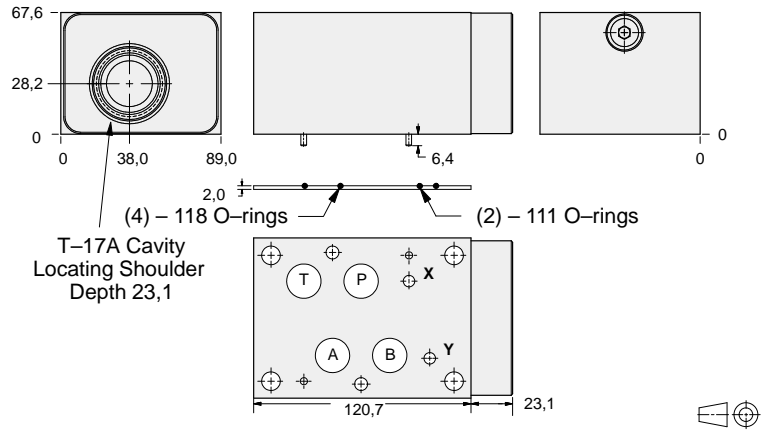
- Aluminium rated to 210 bar and SG Iron rated to 350 bar.
- See page viii for ordering cartridge/body and seals. Pressure ratings, material specifications on page xiv.



FUNCTION

On B
Pilot from A

Counterbalance Valves



ALUMINIUM		SG IRON	
Model Code	List Price	Model Code	List Price
BKB		BKB/S	

07 COUNTERBALANCE

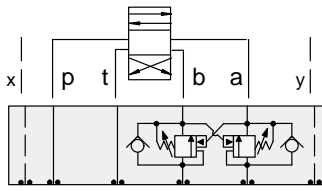
TYPICAL CARTRIDGES USED WITH BODIES SHOWN ABOVE			
	Counterbalance Valve, 3:1 Pilot Ratio		
	CBGAP Page 4.11		
	Counterbalance Valve, 4.5:1 Pilot Ratio		
	CBGG Page 4.13		
	Counterbalance Valve, 10:1 Pilot Ratio		
	CBGHP Page 4.15		
OTHER VALVES:			



ISO 07 SANDWICH BODIES



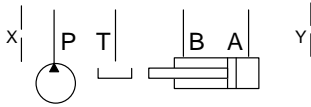
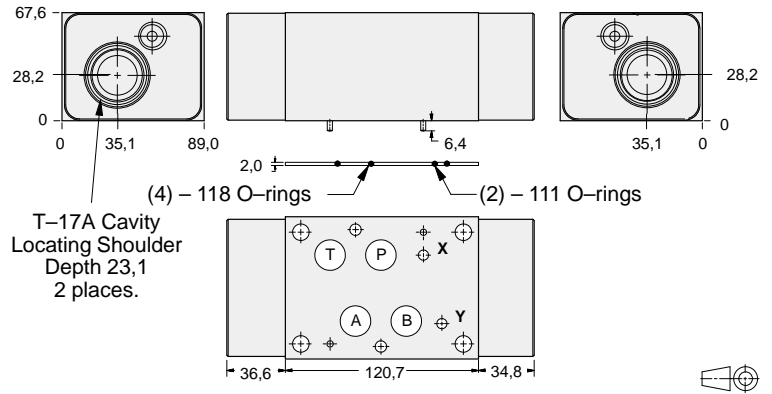
- Aluminium rated to 210 bar and SG Iron rated to 350 bar.
- See page viii for ordering cartridge/body and seals. Pressure ratings, material specifications on page xiv.



FUNCTION

On **A** and **B**
Cross-Piloted

Counterbalance Valves



ALUMINIUM		SG IRON	
Model Code	List Price	Model Code	List Price
BKY		BKY/S	

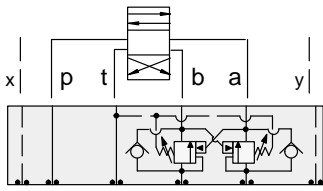
TYPICAL CARTRIDGES USED WITH BODIES SHOWN ABOVE			
	Counterbalance Valve, 3:1 Pilot Ratio		
	CBGAP Page 4.11		
	Counterbalance Valve, 4.5:1 Pilot Ratio		
	CBGG Page 4.13		
	Counterbalance Valve, 10:1 Pilot Ratio		
	CBGHP Page 4.15		
OTHER VALVES:			



ISO 07 SANDWICH BODIES



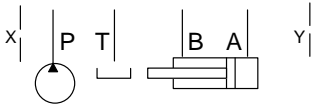
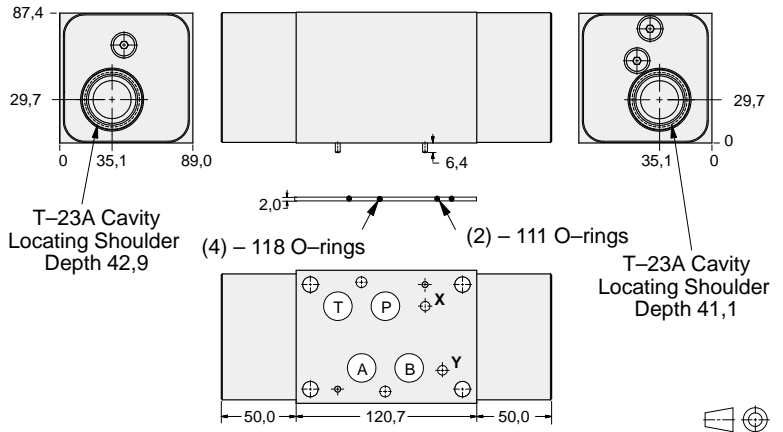
- Aluminium rated to 210 bar and SG Iron rated to 350 bar.
- See page viii for ordering cartridge/body and seals. Pressure ratings, material specifications on page xiv.



FUNCTION

On **A** and **B**
Cross-Piloted
Vents to **T**

Counterbalance Valves



ALUMINIUM		SG IRON	
Model Code	List Price	Model Code	List Price
NKY		NKY/S	

07 COUNTERBALANCE

TYPICAL CARTRIDGES USED WITH BODIES SHOWN ABOVE			
	Vented Counterbalance Valve, 3:1 Pilot Ratio		
	CWGA Page 4.19		
	Vented Counterbalance Valve, 5:1 Pilot Ratio		
	CWGG Page 4.21		
OTHER VALVES:			