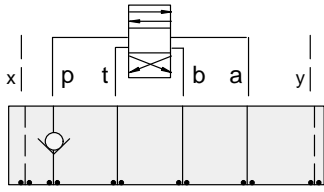




ISO 07 SANDWICH BODIES



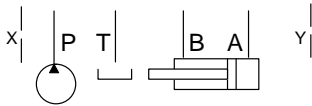
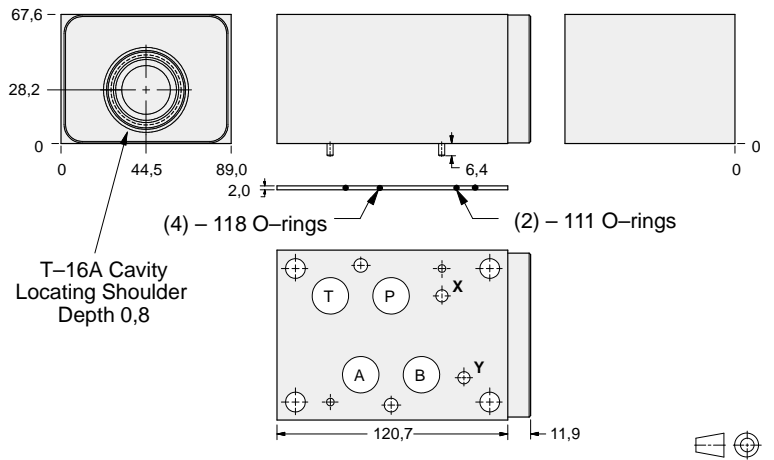
- Aluminium rated to 210 bar and SG Iron rated to 350 bar.
- See page viii for ordering cartridge/body and seals. Pressure ratings, material specifications on page xiv.



FUNCTION

On P

Check Valves



ALUMINIUM		SG IRON	
Model Code	List Price	Model Code	List Price
DKP		DKP/S	

07 CHECK

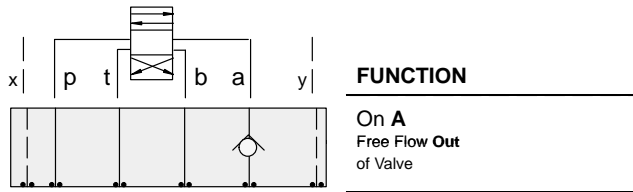
TYPICAL CARTRIDGES USED WITH BODIES SHOWN ABOVE			
	Check Valve, Free Flow Port 1 to Port 2 (Nose-to-Side)		
	CXHA Page 5.09		
OTHER VALVES:			



ISO 07 SANDWICH BODIES



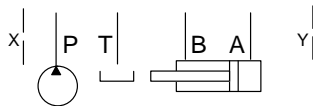
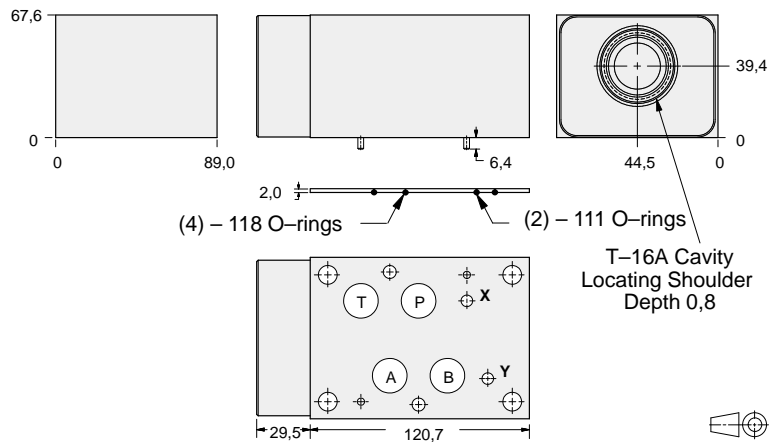
- Aluminium rated to 210 bar and SG Iron rated to 350 bar.
- See page viii for ordering cartridge/body and seals. Pressure ratings, material specifications on page xiv.



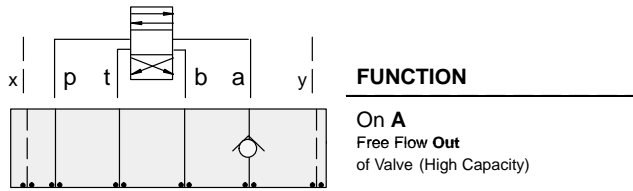
FUNCTION

On A
Free Flow Out
of Valve

Check Valves



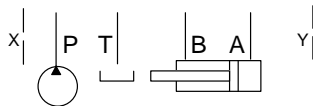
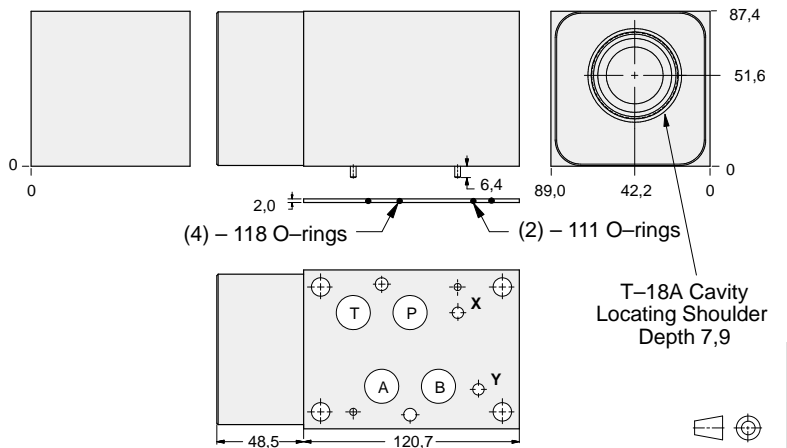
ALUMINIUM		SG IRON	
Model Code	List Price	Model Code	List Price
DKC		DKC/S	



FUNCTION

On A
Free Flow Out
of Valve (High Capacity)

Check Valves



ALUMINIUM		SG IRON	
Model Code	List Price	Part Number	List Price
DKG		DKG/S	

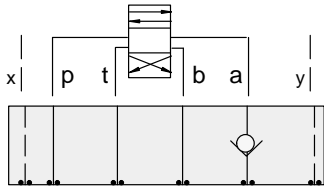
TYPICAL CARTRIDGES USED WITH BODIES SHOWN ABOVE			
	Check Valve, Free Flow Port 1 to Port 2 (Nose-to-Side)		
	CX*A Page 5.09		
OTHER VALVES:			



ISO 07 SANDWICH BODIES



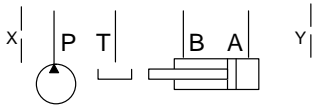
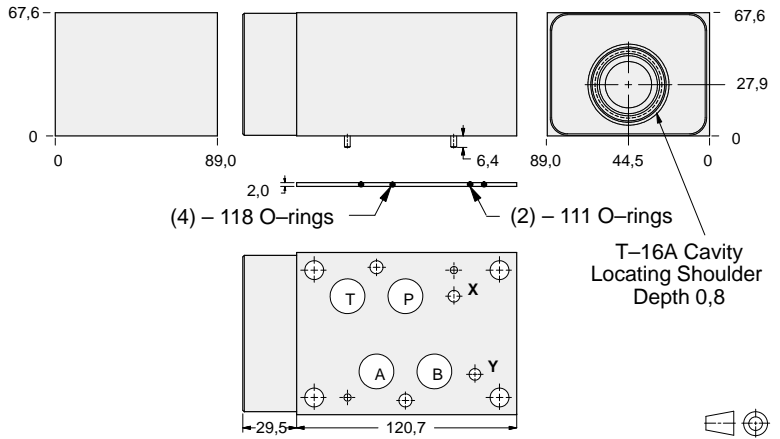
- Aluminium rated to 210 bar and SG Iron rated to 350 bar.
- See page viii for ordering cartridge/body and seals. Pressure ratings, material specifications on page xiv.



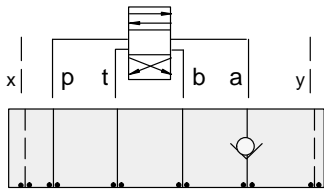
FUNCTION

On A
Free Flow Into Valve

Check Valves



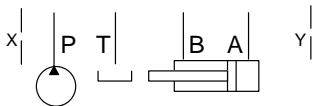
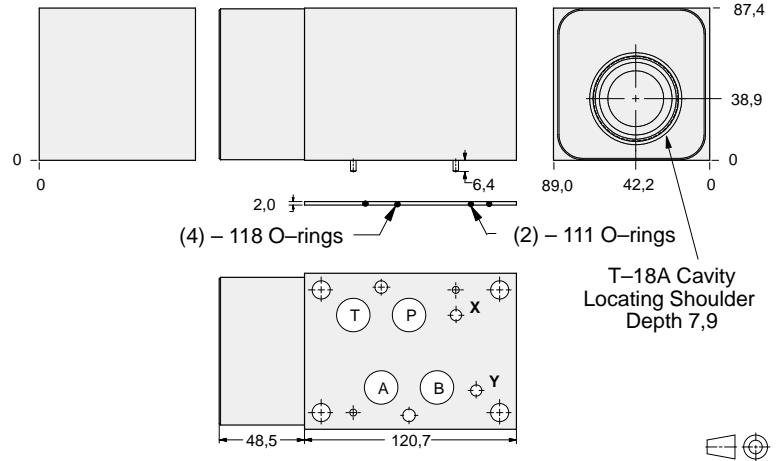
ALUMINIUM		SG IRON	
Model Code	List Price	Model Code	List Price
DKA		DKA/S	



FUNCTION

On A
Free Flow Into Valve
(High Capacity)

Check Valves



ALUMINIUM		SG IRON	
Model Code	List Price	Part Number	List Price
DKE		DKE/S	

07 CHECK

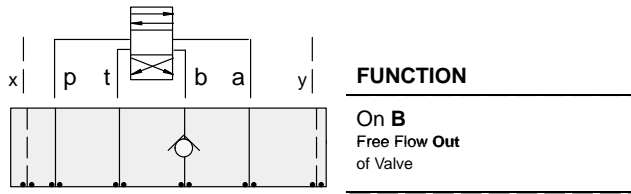
TYPICAL CARTRIDGES USED WITH BODIES SHOWN ABOVE			
	Check Valve, Free Flow Port 1 to Port 2 (Nose-to-Side)		
	CX*A Page 5.09		
OTHER VALVES:			



ISO 07 SANDWICH BODIES



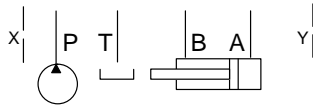
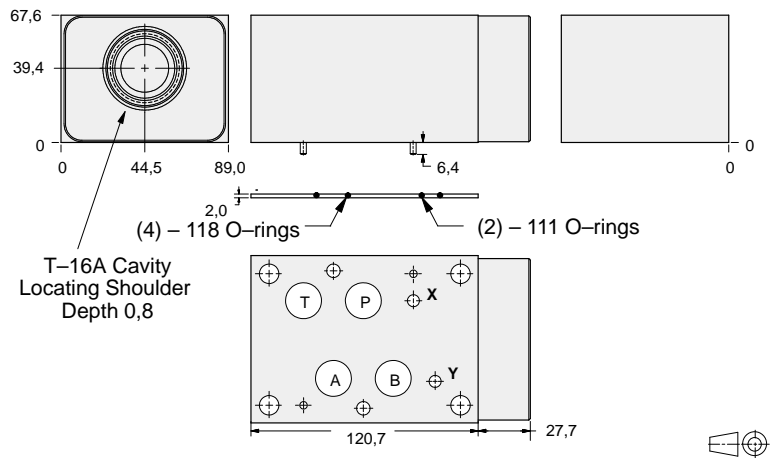
- Aluminium rated to 210 bar and SG Iron rated to 350 bar.
- See page viii for ordering cartridge/body and seals. Pressure ratings, material specifications on page xiv.



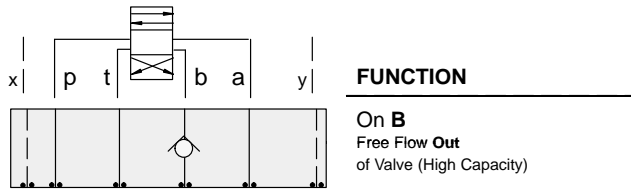
FUNCTION

On **B**
Free Flow Out
of Valve

Check Valves



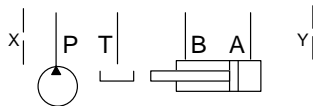
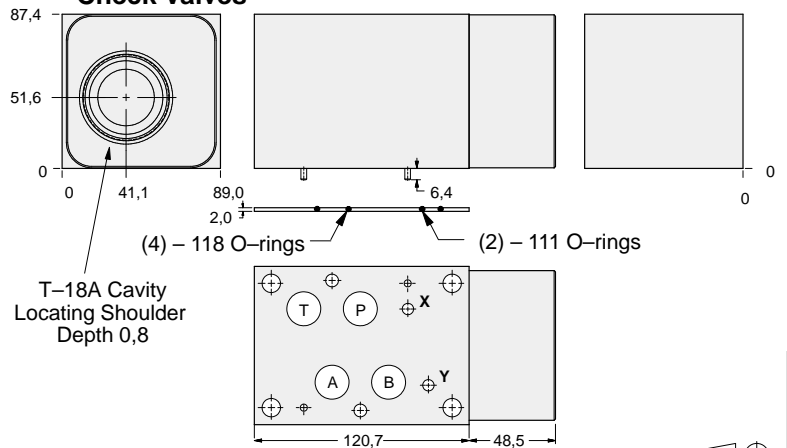
ALUMINIUM		SG IRON	
Model Code	List Price	Model Code	List Price
DKD		DKD/S	



FUNCTION

On **B**
Free Flow Out
of Valve (High Capacity)

Check Valves



ALUMINIUM		SG IRON	
Model Code	List Price	Part Number	List Price
DKI		DKI/S	

TYPICAL CARTRIDGES USED WITH BODIES SHOWN ABOVE

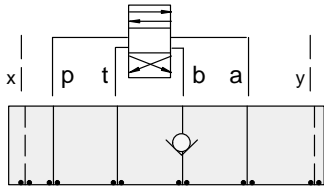
	Check Valve, Free Flow Port 1 to Port 2 (Nose-to-Side)		
	CX*A Page 5.09		
OTHER VALVES:			



ISO 07 SANDWICH BODIES



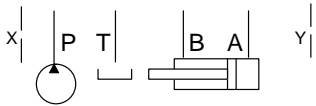
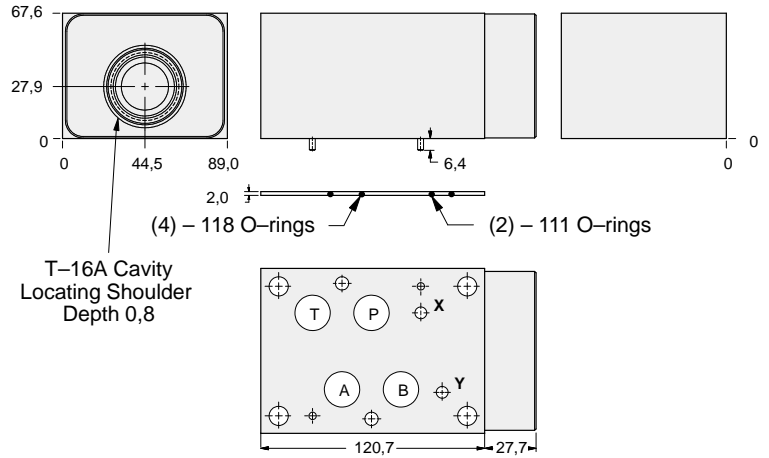
- Aluminium rated to 210 bar and SG Iron rated to 350 bar.
- See page viii for ordering cartridge/body and seals. Pressure ratings, material specifications on page xiv.



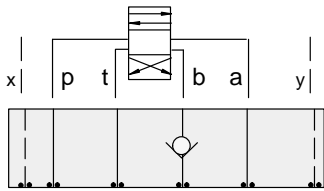
FUNCTION

On B
Free Flow Into Valve

Check Valves



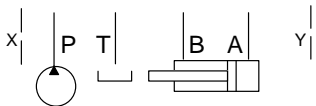
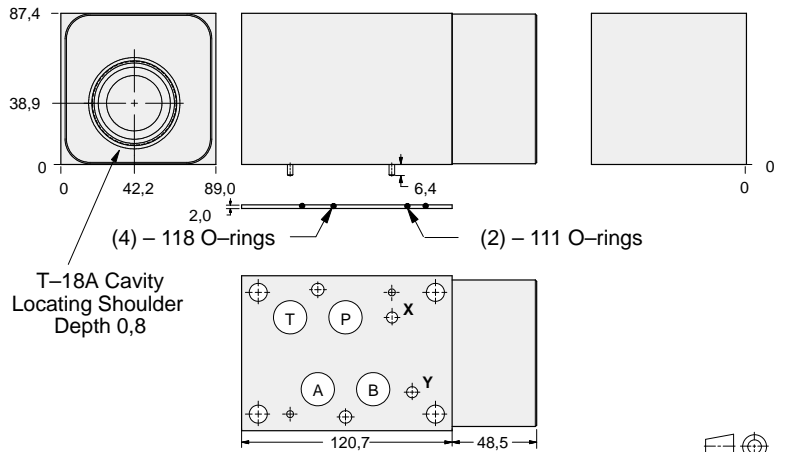
ALUMINIUM		SG IRON	
<i>Model Code</i>	<i>List Price</i>	<i>Model Code</i>	<i>List Price</i>
DKB		DKB/S	



FUNCTION

On B
Free Flow Into Valve
(High Capacity)

Check Valves



ALUMINIUM		SG IRON	
<i>Model Code</i>	<i>List Price</i>	<i>Part Number</i>	<i>List Price</i>
DKF		DKF/S	

07 CHECK

TYPICAL CARTRIDGES USED WITH BODIES SHOWN ABOVE

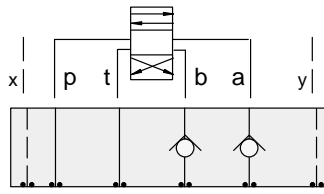
	Check Valve, Free Flow Port 1 to Port 2 (Nose-to-Side)		
	CX*A Page 5.09		
OTHER VALVES:			



ISO 07 SANDWICH BODIES



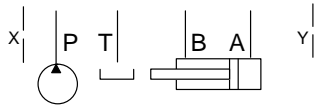
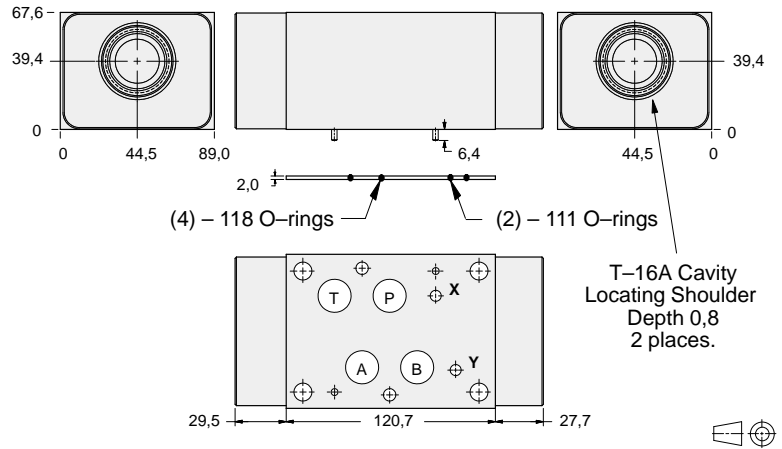
- Aluminium rated to 210 bar and SG Iron rated to 350 bar.
- See page viii for ordering cartridge/body and seals. Pressure ratings, material specifications on page xiv.



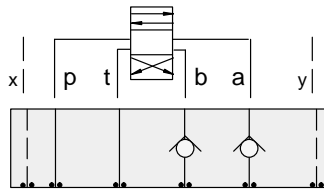
FUNCTION

On **A** and **B**
Free Flow Out
of Valve

Check Valves



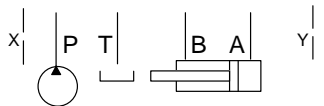
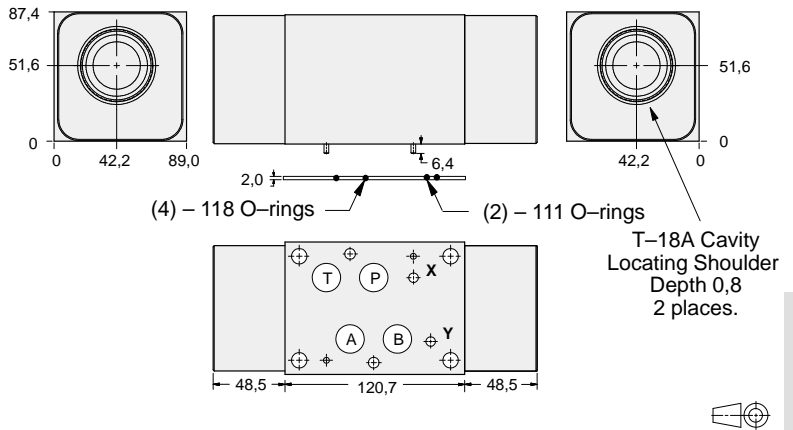
ALUMINIUM		SG IRON	
Model Code	List Price	Model Code	List Price
DKZ		DKZ/S	



FUNCTION

On **A** and **B**
Free Flow Out
of Valve (High Capacity)

Check Valves



ALUMINIUM		SG IRON	
Model Code	List Price	Part Number	List Price
DKU		DKU/S	

TYPICAL CARTRIDGES USED WITH BODIES SHOWN ABOVE

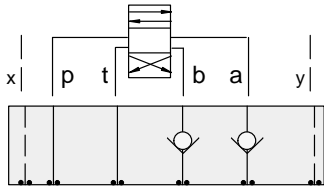
	Check Valve, Free Flow Port 1 to Port 2 (Nose-to-Side)		
	CX*A Page 5.09		
OTHER VALVES:			



ISO 07 SANDWICH BODIES



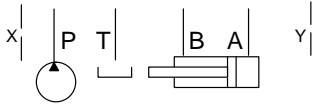
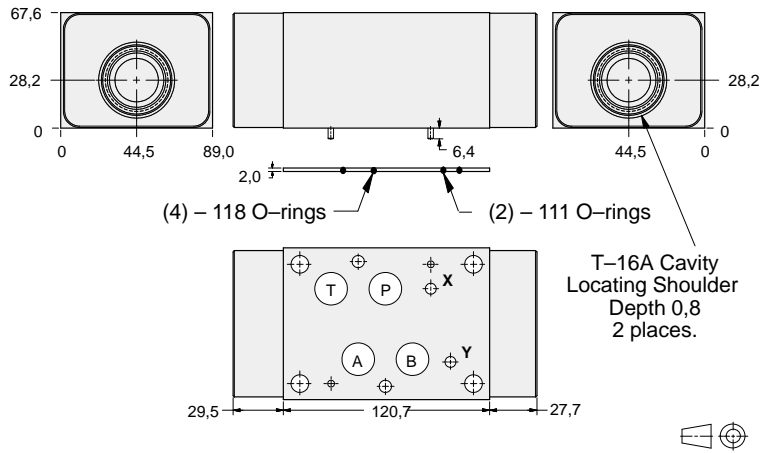
- Aluminium rated to 210 bar and SG Iron rated to 350 bar.
- See page viii for ordering cartridge/body and seals. Pressure ratings, material specifications on page xiv.



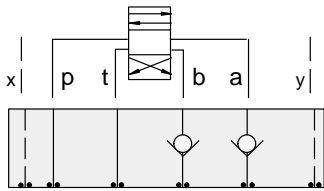
FUNCTION

On **A** and **B**
Free Flow Into Valve

Check Valves



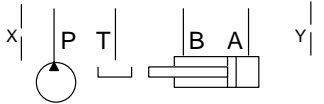
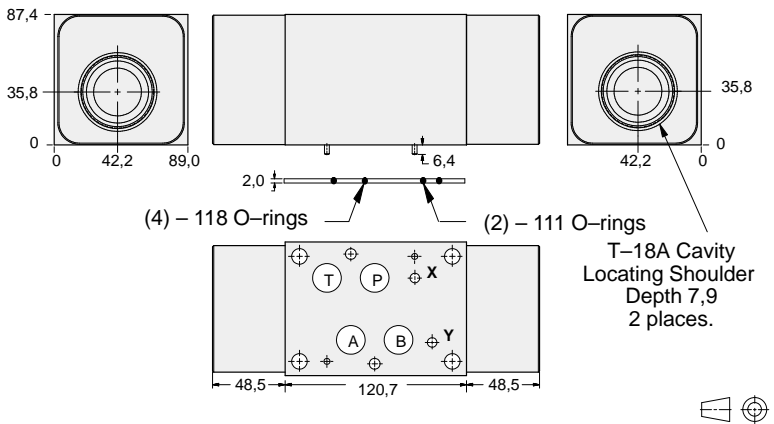
ALUMINIUM		SG IRON	
Model Code	List Price	Model Code	List Price
DKY		DKY/S	



FUNCTION

On **A** and **B**
Free Flow Into Valve
(High Capacity)

Check Valves



ALUMINIUM		SG IRON	
Model Code	List Price	Part Number	List Price
DKW		DKW/S	

07 CHECK

TYPICAL CARTRIDGES USED WITH BODIES SHOWN ABOVE			
	Check Valve, Free Flow Port 1 to Port 2 (Nose-to-Side)		
	CX*A Page 5.09		
OTHER VALVES:			

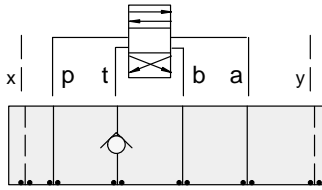


ISO 07 SANDWICH BODIES



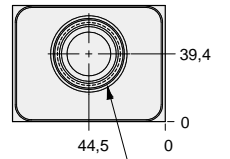
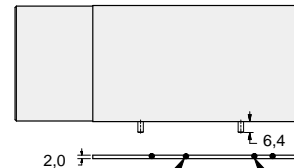
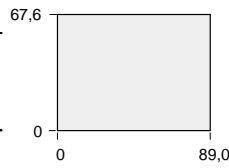
- Aluminium rated to 210 bar and SG Iron rated to 350 bar.
- See page viii for ordering cartridge/body and seals. Pressure ratings, material specifications on page xiv.

Check Valves

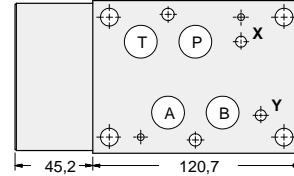


FUNCTION

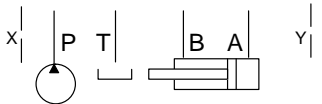
On T



(4) – 118 O-rings (2) – 111 O-rings



T-16A Cavity Locating Shoulder Depth 0,8



ALUMINIUM		SG IRON	
Model Code	List Price	Model Code	List Price
DKT		DKT/S	

TYPICAL CARTRIDGES USED WITH BODIES SHOWN ABOVE

	Check Valve, Free Flow Port 1 to Port 2 (Nose-to-Side)		
	CXHA Page 5.09		
OTHER VALVES:			