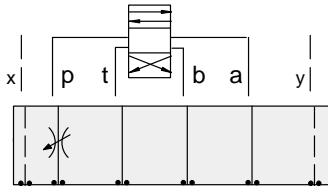




# ISO 07 SANDWICH BODIES



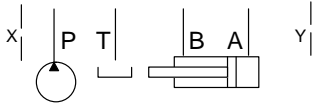
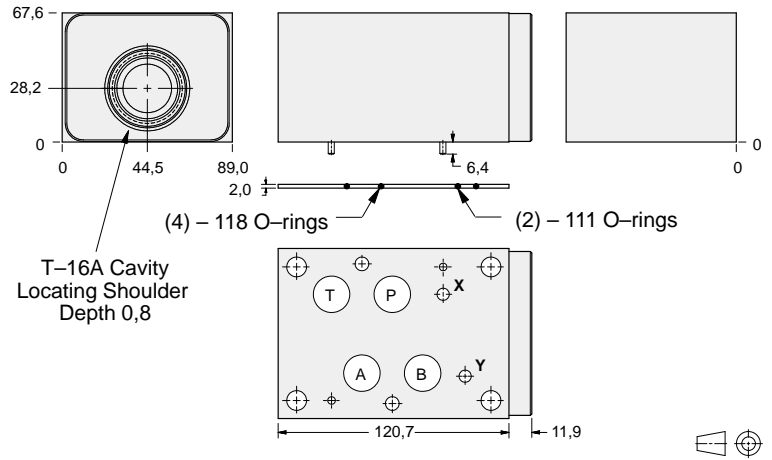
- Aluminium rated to 210 bar and SG Iron rated to 350 bar.
- See page viii for ordering cartridge/body and seals. Pressure ratings, material specifications on page xiv.



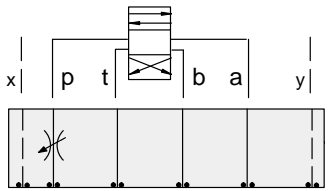
### FUNCTION

Meter-In P

### Flow Control Valves



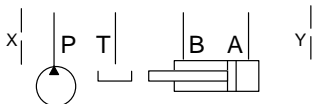
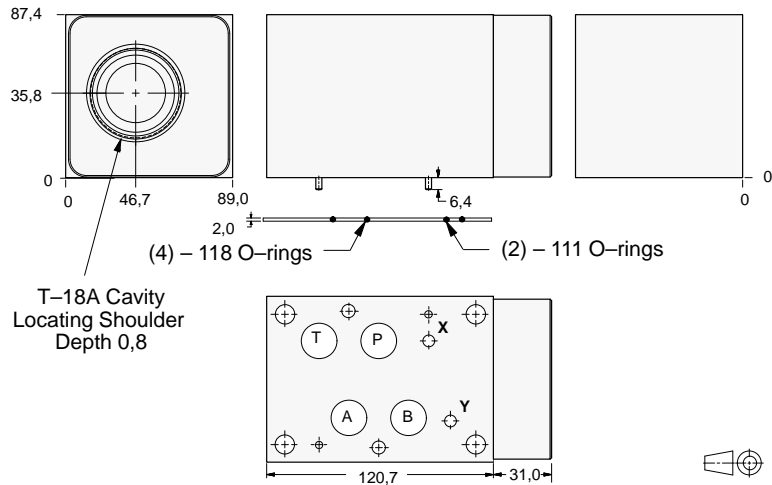
ALUMINIUM		SG IRON	
<i>Model Code</i>	<i>List Price</i>	<i>Model Code</i>	<i>List Price</i>
<b>DKP</b>		<b>DKP/S</b>	



### FUNCTION

Meter-In P  
(High Capacity)

### Flow Control Valves



ALUMINIUM		SG IRON	
<i>Model Code</i>	<i>List Price</i>	<i>Part Number</i>	<i>List Price</i>
<b>DKO</b>		<b>DKO/S</b>	

07 FLOW CONTROL

### TYPICAL CARTRIDGES USED WITH BODIES SHOWN ABOVE

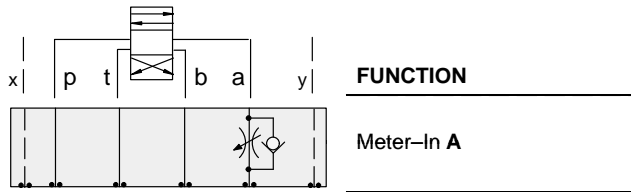
	Fully Adjustable Needle Valve		
	<b>NF*C Page 5.13</b>		
	Fixed Orifice, Pressure-Compensated Flow Control		
	<b>FX*A Page 5.21</b>		
<b>OTHER VALVES:</b>			



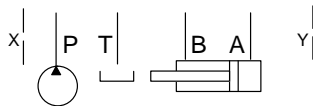
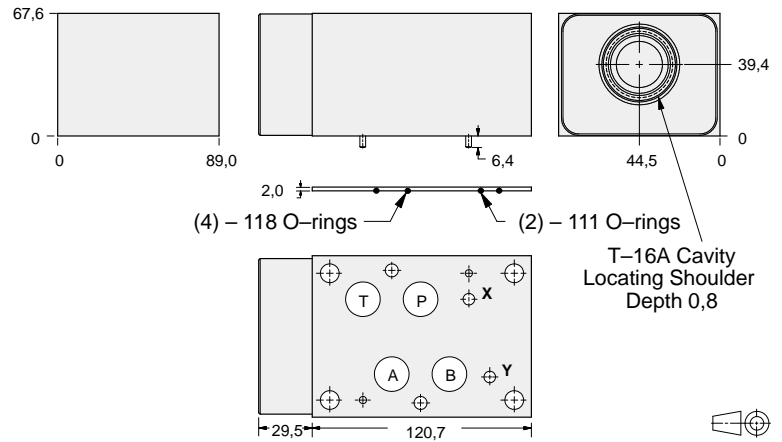
# ISO 07 SANDWICH BODIES



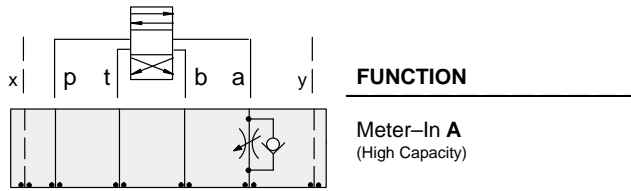
- Aluminium rated to 210 bar and SG Iron rated to 350 bar.
- See page viii for ordering cartridge/body and seals. Pressure ratings, material specifications on page xiv.



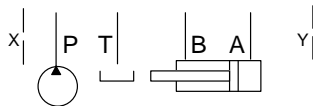
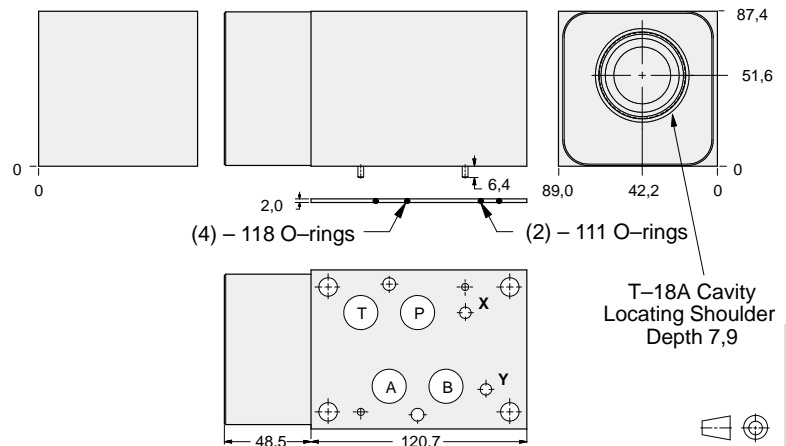
## Flow Control Valves



ALUMINIUM		SG IRON	
Model Code	List Price	Model Code	List Price
<b>DKC</b>		<b>DKC/S</b>	



## Flow Control Valves



ALUMINIUM		SG IRON	
Model Code	List Price	Part Number	List Price
<b>DKG</b>		<b>DKG/S</b>	

### TYPICAL CARTRIDGES USED WITH BODIES SHOWN ABOVE

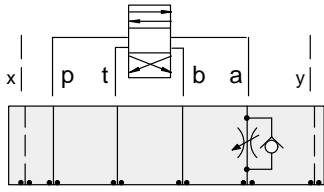
	Fully Adjustable Needle Valve		Fixed Orifice, Pressure-Compensated Flow Control
	NF*C Page 5.13		FX*A Page 5.21
	Fully Adjustable Needle Valve with Reverse Free Flow Check		Fixed Orifice, Pressure-Compensated Flow Control with Reverse Free Flow Check
	NC*B Page 5.17		FC*B Page 5.23
	Fully Adjustable Needle Valve with Reverse Free Flow Check, Low Flow		Fully Adjustable, Pressure-Compensated Flow Control with Reverse Free Flow Check
	NC*C Page 5.19		FD*A Page 5.25
OTHER VALVES:	CN*C		



# ISO 07 SANDWICH BODIES



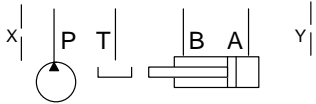
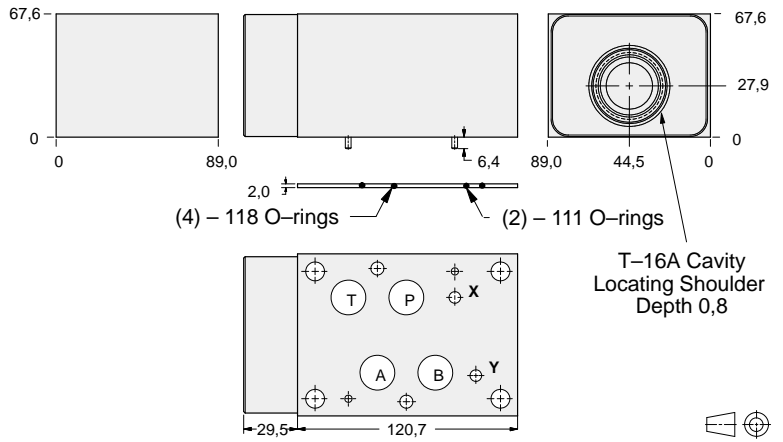
- Aluminium rated to 210 bar and SG Iron rated to 350 bar.
- See page viii for ordering cartridge/body and seals. Pressure ratings, material specifications on page xiv.



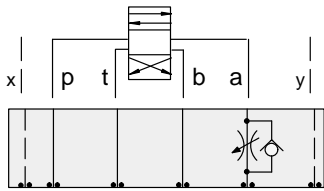
## FUNCTION

Meter-Out A

## Flow Control Valves



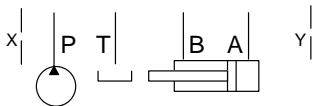
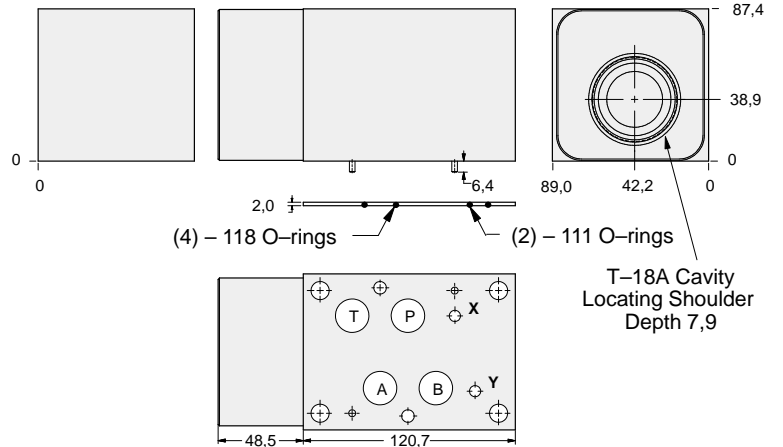
ALUMINIUM		SG IRON	
<i>Model Code</i>	<i>List Price</i>	<i>Model Code</i>	<i>List Price</i>
<b>DKA</b>		<b>DKA/S</b>	



## FUNCTION

Meter-Out A  
(High Capacity)

## Flow Control Valves



ALUMINIUM		SG IRON	
<i>Model Code</i>	<i>List Price</i>	<i>Part Number</i>	<i>List Price</i>
<b>DKE</b>		<b>DKE/S</b>	

### TYPICAL CARTRIDGES USED WITH BODIES SHOWN ABOVE

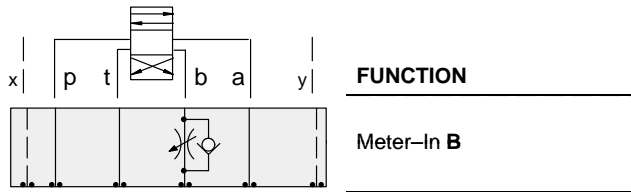
	Fully Adjustable Needle Valve		Fixed Orifice, Pressure-Compensated Flow Control
	<b>NF*C</b> Page 5.13		<b>FX*A</b> Page 5.21
	Fully Adjustable Needle Valve with Reverse Free Flow Check		Fixed Orifice, Pressure-Compensated Flow Control with Reverse Free Flow Check
	<b>NC*B</b> Page 5.17		<b>FC*B</b> Page 5.23
	Fully Adjustable Needle Valve with Reverse Free Flow Check, Low Flow		Fully Adjustable, Pressure-Compensated Flow Control with Reverse Free Flow Check
	<b>NC*C</b> Page 5.19		<b>FD*A</b> Page 5.25
<b>OTHER VALVES:</b>	<b>CN*C</b>		



# ISO 07 SANDWICH BODIES



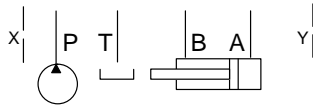
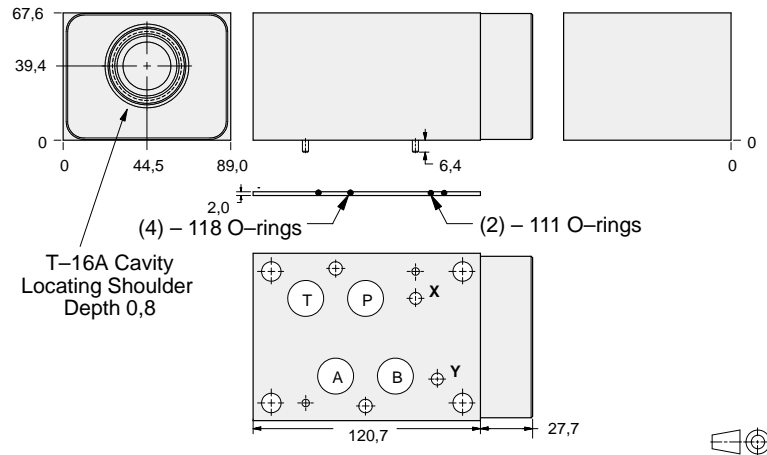
- Aluminium rated to 210 bar and SG Iron rated to 350 bar.
- See page viii for ordering cartridge/body and seals. Pressure ratings, material specifications on page xiv.



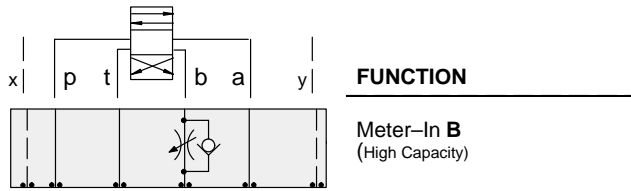
## FUNCTION

Meter-In B

## Flow Control Valves



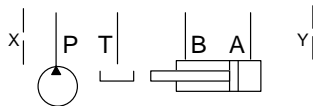
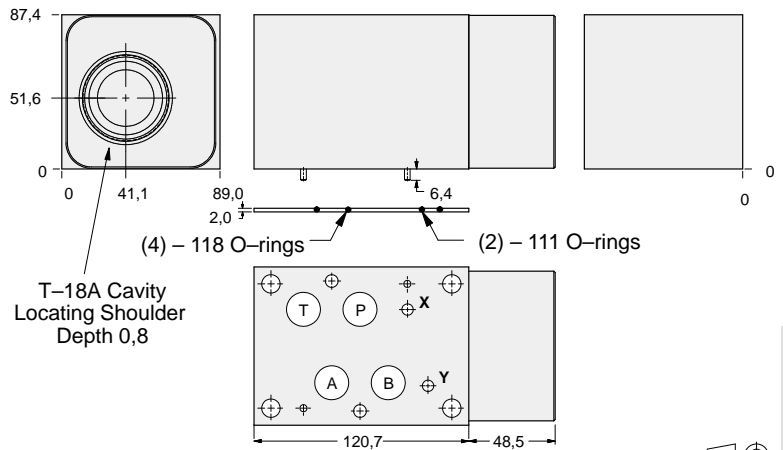
ALUMINIUM		SG IRON	
Model Code	List Price	Model Code	List Price
DKD		DKD/S	



## FUNCTION

Meter-In B  
(High Capacity)

## Flow Control Valves



ALUMINIUM		SG IRON	
Model Code	List Price	Part Number	List Price
DKI		DKI/S	

### TYPICAL CARTRIDGES USED WITH BODIES SHOWN ABOVE

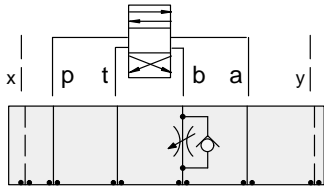
	Fully Adjustable Needle Valve		Fixed Orifice, Pressure-Compensated Flow Control
	NF*C Page 5.13		FX*A Page 5.21
	Fully Adjustable Needle Valve with Reverse Free Flow Check		Fixed Orifice, Pressure-Compensated Flow Control with Reverse Free Flow Check
	NC*B Page 5.17		FC*B Page 5.23
	Fully Adjustable Needle Valve with Reverse Free Flow Check, Low Flow		Fully Adjustable, Pressure-Compensated Flow Control with Reverse Free Flow Check
	NC*C Page 5.19		FD*A Page 5.25
OTHER VALVES:	CN*C		



# ISO 07 SANDWICH BODIES



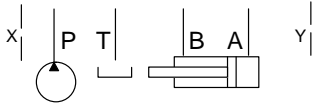
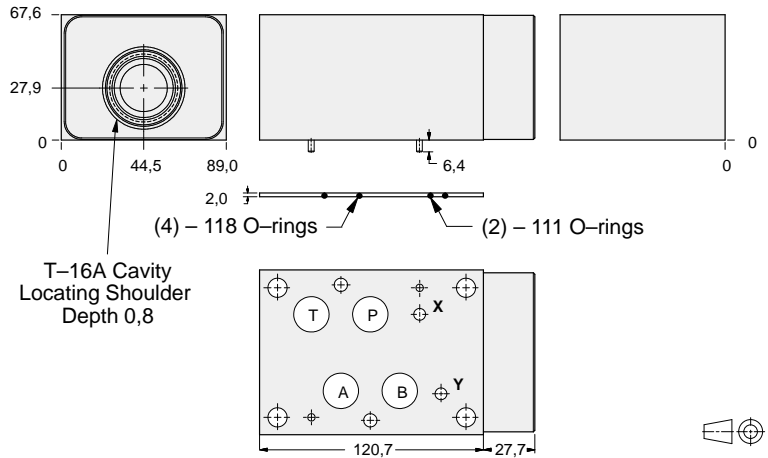
- Aluminium rated to 210 bar and SG Iron rated to 350 bar.
- See page viii for ordering cartridge/body and seals. Pressure ratings, material specifications on page xiv.



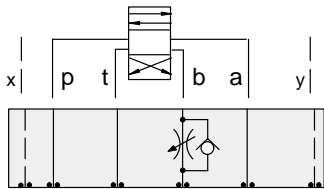
### FUNCTION

Meter-Out B

### Flow Control Valves



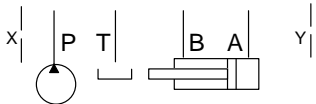
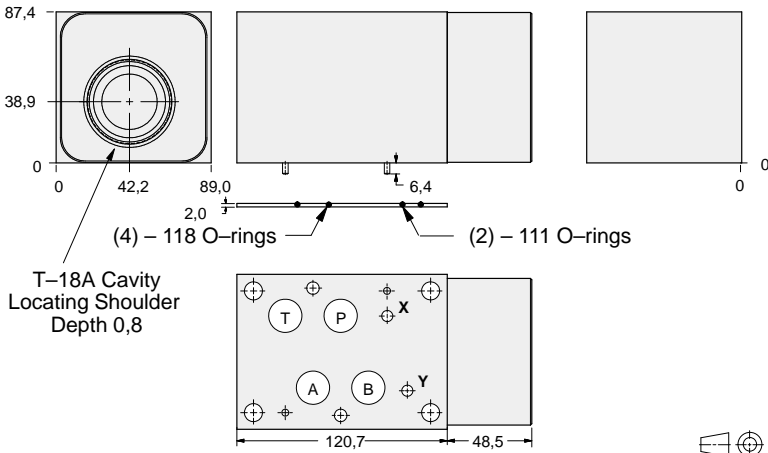
ALUMINIUM		SG IRON	
<i>Model Code</i>	<i>List Price</i>	<i>Model Code</i>	<i>List Price</i>
<b>DKB</b>		<b>DKB/S</b>	



### FUNCTION

Meter-Out B  
(High Capacity)

### Flow Control Valves



ALUMINIUM		SG IRON	
<i>Model Code</i>	<i>List Price</i>	<i>Part Number</i>	<i>List Price</i>
<b>DKF</b>		<b>DKF/S</b>	

### TYPICAL CARTRIDGES USED WITH BODIES SHOWN ABOVE

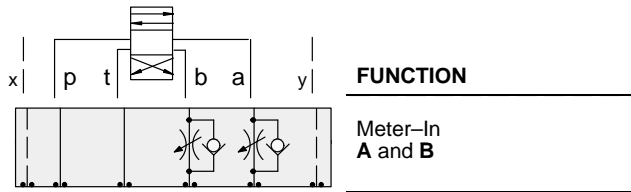
	Fully Adjustable Needle Valve		Fixed Orifice, Pressure-Compensated Flow Control
	<b>NF*C Page 5.13</b>		<b>FX*A Page 5.21</b>
	Fully Adjustable Needle Valve with Reverse Free Flow Check		Fixed Orifice, Pressure-Compensated Flow Control with Reverse Free Flow Check
	<b>NC*B Page 5.17</b>		<b>FC*B Page 5.23</b>
	Fully Adjustable Needle Valve with Reverse Free Flow Check, Low Flow		Fully Adjustable, Pressure-Compensated Flow Control with Reverse Free Flow Check
	<b>NC*C Page 5.19</b>		<b>FD*A Page 5.25</b>
<b>OTHER VALVES:</b>	<b>CN*C</b>		



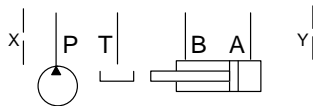
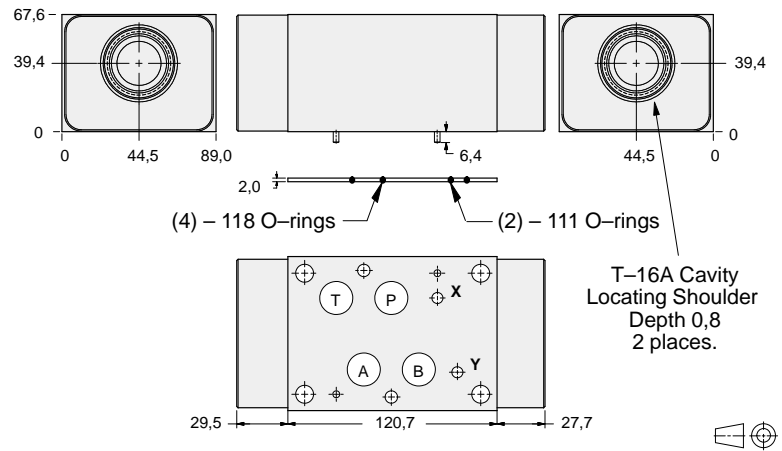
# ISO 07 SANDWICH BODIES



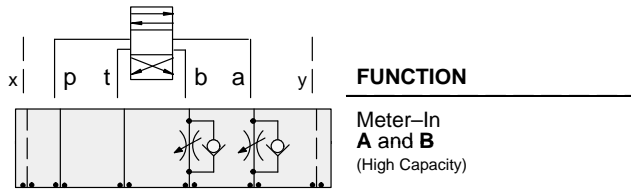
- Aluminium rated to 210 bar and SG Iron rated to 350 bar.
- See page viii for ordering cartridge/body and seals. Pressure ratings, material specifications on page xiv.



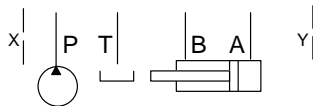
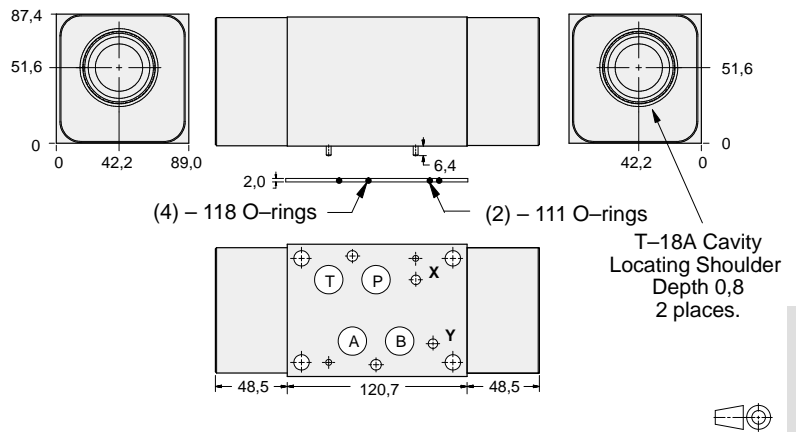
## Flow Control Valves



ALUMINIUM		SG IRON	
Model Code	List Price	Model Code	List Price
<b>DKZ</b>		<b>DKZ/S</b>	



## Flow Control Valves



ALUMINIUM		SG IRON	
Model Code	List Price	Part Number	List Price
<b>DKU</b>		<b>DKU/S</b>	

### TYPICAL CARTRIDGES USED WITH BODIES SHOWN ABOVE

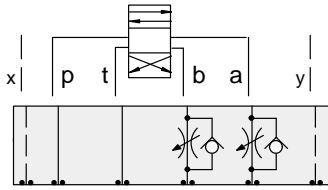
	Fully Adjustable Needle Valve		Fixed Orifice, Pressure-Compensated Flow Control
	NF*C Page 5.13		FX*A Page 5.21
	Fully Adjustable Needle Valve with Reverse Free Flow Check		Fixed Orifice, Pressure-Compensated Flow Control with Reverse Free Flow Check
	NC*B Page 5.17		FC*B Page 5.23
	Fully Adjustable Needle Valve with Reverse Free Flow Check, Low Flow		Fully Adjustable, Pressure-Compensated Flow Control with Reverse Free Flow Check
	NC*C Page 5.19		FD*A Page 5.25
OTHER VALVES:	CNGC, CNIC		



# ISO 07 SANDWICH BODIES



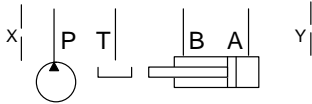
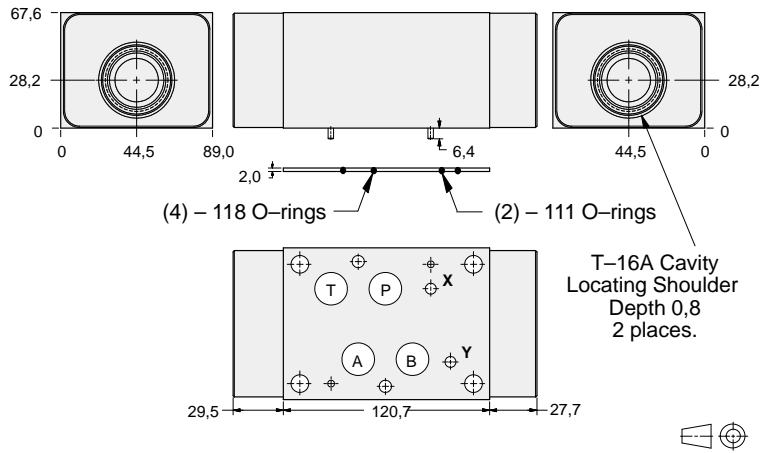
- Aluminium rated to 210 bar and SG Iron rated to 350 bar.
- See page viii for ordering cartridge/body and seals. Pressure ratings, material specifications on page xiv.



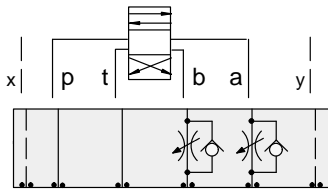
### FUNCTION

Meter-Out  
A and B

### Flow Control Valves



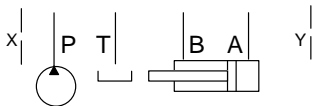
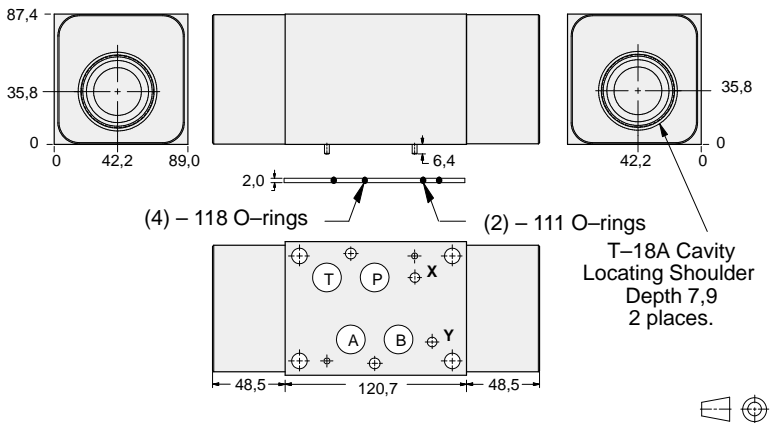
ALUMINIUM		SG IRON	
<i>Model Code</i>	<i>List Price</i>	<i>Model Code</i>	<i>List Price</i>
<b>DKY</b>		<b>DKY/S</b>	



### FUNCTION

Meter-Out  
A and B  
(High Capacity)

### Flow Control Valves



ALUMINIUM		SG IRON	
<i>Model Code</i>	<i>List Price</i>	<i>Part Number</i>	<i>List Price</i>
<b>DKW</b>		<b>DKW/S</b>	

### TYPICAL CARTRIDGES USED WITH BODIES SHOWN ABOVE

	Fully Adjustable Needle Valve		Fixed Orifice, Pressure-Compensated Flow Control
	<b>NF*C</b> Page 5.13		<b>FX*A</b> Page 5.21
	Fully Adjustable Needle Valve with Reverse Free Flow Check		Fixed Orifice, Pressure-Compensated Flow Control with Reverse Free Flow Check
	<b>NC*B</b> Page 5.17		<b>FC*B</b> Page 5.23
	Fully Adjustable Needle Valve with Reverse Free Flow Check, Low Flow		Fully Adjustable, Pressure-Compensated Flow Control with Reverse Free Flow Check
	<b>NC*C</b> Page 5.19		<b>FD*A</b> Page 5.25
<b>OTHER VALVES:</b>	<b>CN*C</b>		



# ISO 07 SANDWICH BODIES



- Aluminium rated to 210 bar and SG Iron rated to 350 bar.
- See page viii for ordering cartridge/body and seals. Pressure ratings, material specifications on page xiv.

**Flow Control Valves**

**FUNCTION**  
Meter-Out T

ALUMINIUM		SG IRON	
Model Code	List Price	Model Code	List Price
DKT		DKT/S	

**Flow Control Valves**

**FUNCTION**  
Meter-Out T  
(High Capacity)

ALUMINIUM		SG IRON	
Model Code	List Price	Part Number	List Price
DKV		DKV/S	

**07 FLOW CONTROL**

TYPICAL CARTRIDGES USED WITH BODIES SHOWN ABOVE			
	Fully Adjustable Needle Valve		Fixed Orifice, Pressure-Compensated Flow Control
	NF*C Page 5.13		FX*A Page 5.21
	Fully Adjustable Needle Valve with Reverse Free Flow Check		Fixed Orifice, Pressure-Compensated Flow Control with Reverse Free Flow Check
	NC*B Page 5.17		FC*B Page 5.23
	Fully Adjustable Needle Valve with Reverse Free Flow Check, Low Flow		Fully Adjustable, Pressure-Compensated Flow Control with Reverse Free Flow Check
	NC*C Page 5.19		FD*A Page 5.25
OTHER VALVES:	CN*C		