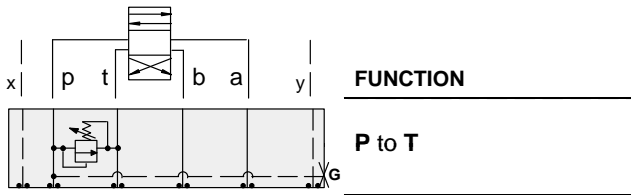




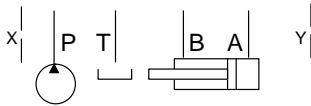
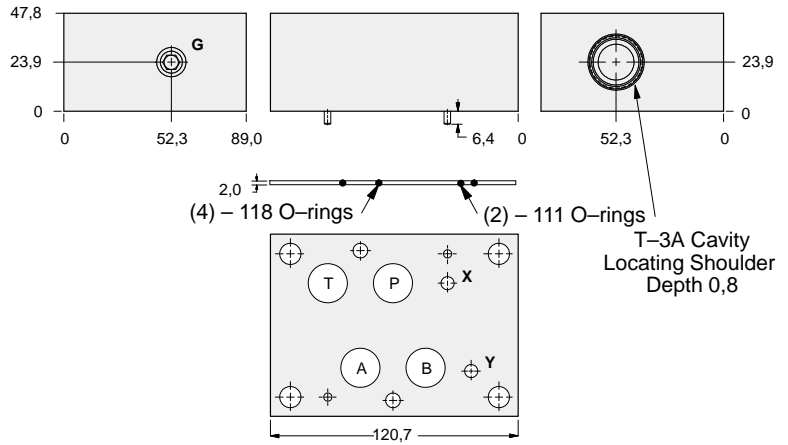
ISO 07 SANDWICH BODIES



- Aluminium rated to 210 bar and SG Iron rated to 350 bar.
- See page viii for ordering cartridge/body and seals. Pressure ratings, material specifications on page xiv.



Relief Valves



Gauge Port (Plugged)	ALUMINIUM		SG IRON	
	Model Code	List Price	Model Code	List Price
.25 NPTF	CKP		CKP/S	
.25 BSPP	CKP/M		CKP/T	

TYPICAL CARTRIDGES USED WITH BODIES SHOWN ABOVE

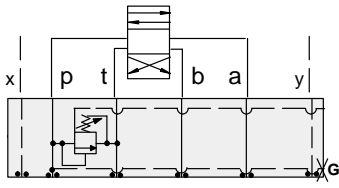
	<i>Pilot Operated Relief Valve</i>		<i>Pilot Operated "Kick-Down" Relief Valve</i>
	RPGC Page 1.06		RQGB Page 1.12
	<i>Pilot Operated, Rapid Response Relief Valve</i>		<i>Air Controlled, Pilot Operated Relief Valve</i>
	RPGE Page 1.08		RPGD Page 1.14
	<i>Direct Acting Relief Valve</i>		
	RDFA Page 1.10		
OTHER VALVES:			



ISO 07 SANDWICH BODIES



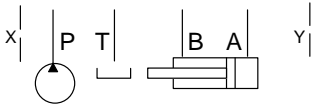
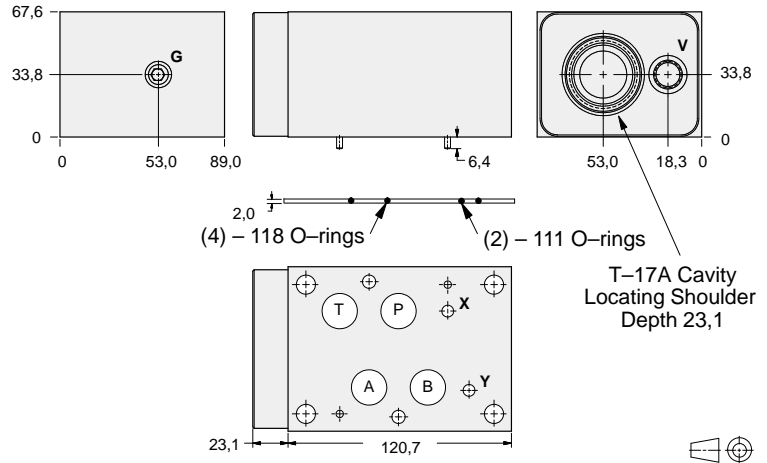
- Aluminium rated to 210 bar and SG Iron rated to 350 bar.
- See page viii for ordering cartridge/body and seals. Pressure ratings, material specifications on page xiv.



FUNCTION

P to T
Externally Vented

Relief Valves



Vent Port	Gauge Port (Plugged)	ALUMINIUM		SG IRON	
		Model Code	List Price	Model Code	List Price
SAE-6	.25 NPTF	CKQ		CKQ/S	
.25 BSPP	.25 BSPP			CKQ/T	

07 RELIEF

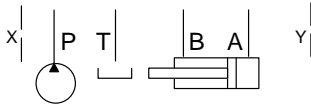
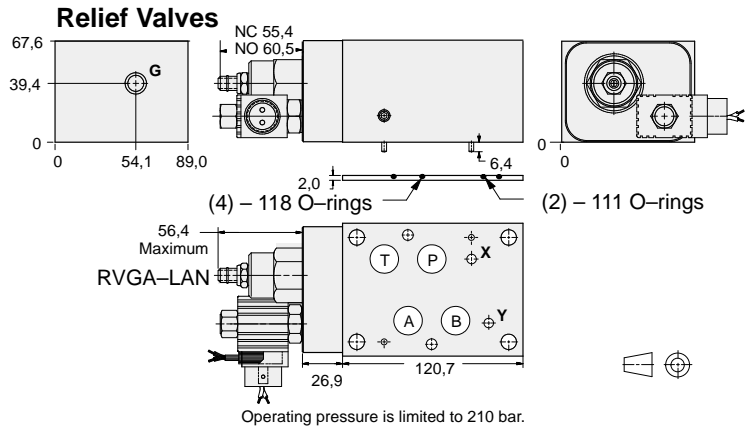
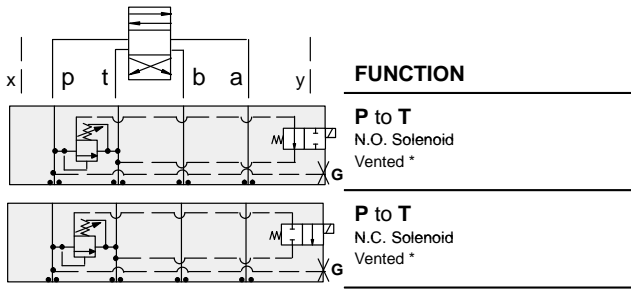
TYPICAL CARTRIDGES USED WITH BODIES SHOWN ABOVE			
	<i>Pilot Operated Vented Relief Valve</i>		
	RVGA Page 1.19		
OTHER VALVES:			



ISO 07 SANDWICH BODIES



- Aluminium rated to 210 bar and SG Iron rated to 350 bar.
- See page viii for ordering cartridge/body and seals. Pressure ratings, material specifications on page xiv.



Solenoid Type	Gauge Port (Plugged)	ALUMINIUM		SG IRON	
		Model Code	List Price	Model Code	List Price
N.O.	.25 NPTF	YRFI-LAN-*B		YRFI-LAN-*B/S	
N.O.	.25 BSPP	YRFI-LAN-*B/M		YRFI-LAN-*B/T	
N.C.	.25 NPTF	YRFJ-LAN-*B		YRFJ-LAN-*B/S	
N.C.	.25 BSPP	YRFJ-LAN-*B/M		YRFJ-LAN-*B/T	

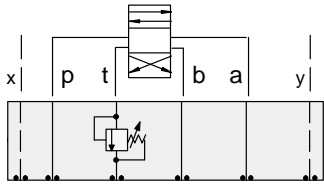
* Select solenoid connection/voltage option from page 14.16 and add option price to List Price.



ISO 07 SANDWICH BODIES



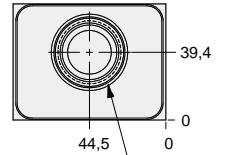
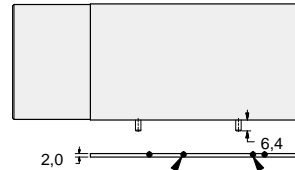
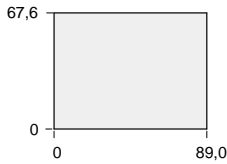
- Aluminium rated to 210 bar and SG Iron rated to 350 bar.
- See page viii for ordering cartridge/body and seals. Pressure ratings, material specifications on page xiv.



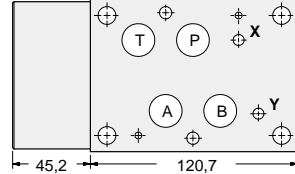
FUNCTION

Out of T

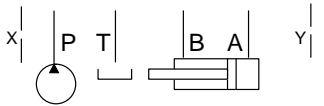
Relief Valves



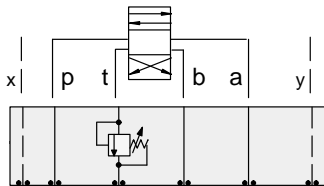
(4) – 118 O-rings (2) – 111 O-rings



T-16A Cavity Locating Shoulder Depth 0,8



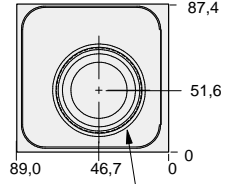
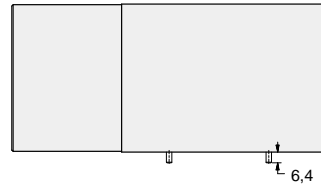
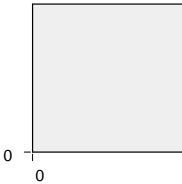
ALUMINIUM		SG IRON	
Model Code	List Price	Model Code	List Price
DKT		DKT/S	



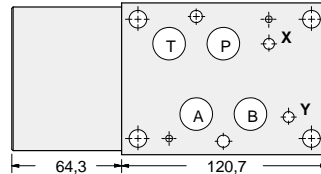
FUNCTION

Out of T
(High Capacity)

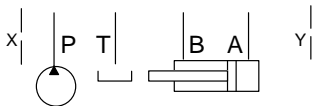
Relief Valves



(4) – 118 O-rings (2) – 111 O-rings



T-18A Cavity Locating Shoulder Depth 0,8



ALUMINIUM		SG IRON	
Model Code	List Price	Part Number	List Price
DKV		DKV/S	

07 RELIEF

TYPICAL CARTRIDGES USED WITH BODIES SHOWN ABOVE

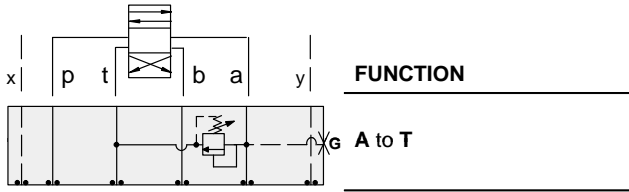
	<i>Pilot Operated Relief Valve</i>		<i>Pilot Operated "Kick-Down" Relief Valve</i>
	RP*C Page 1.07		RQ*B Page 1.13
	<i>Pilot Operated, Rapid Response Relief Valve</i>		<i>Air Controlled, Pilot Operated Relief Valve</i>
	RP*E Page 1.09		RP*D Page 1.15
	<i>Direct Acting Relief Valve</i>		
	RD*A Page 1.11		
OTHER VALVES:			



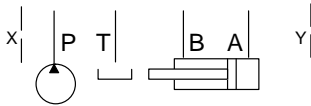
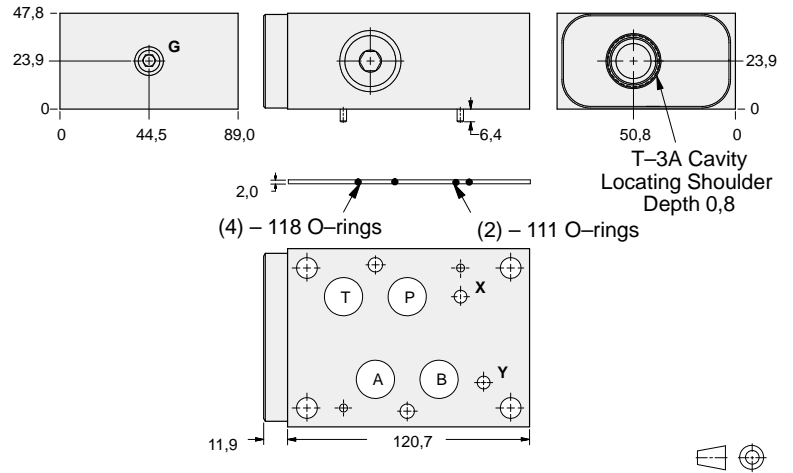
ISO 07 SANDWICH BODIES



- Aluminium rated to 210 bar and SG Iron rated to 350 bar.
- See page viii for ordering cartridge/body and seals. Pressure ratings, material specifications on page xiv.



Relief Valves



Gauge Port (Plugged)	ALUMINIUM		SG IRON	
	Model Code	List Price	Model Code	List Price
.25 NPTF	CKA		CKA/S	
.25 BSPP	CKA/M		CKA/T	

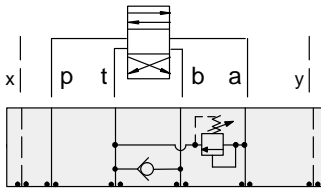
TYPICAL CARTRIDGES USED WITH BODIES SHOWN ABOVE			
	<i>Pilot Operated Relief Valve</i>		<i>Pilot Operated "Kick-Down" Relief Valve</i>
	RPGC Page 1.06		RQGB Page 1.12
	<i>Pilot Operated, Rapid Response Relief Valve</i>		<i>Air Controlled, Pilot Operated Relief Valve</i>
	RPGE Page 1.08		RPGD Page 1.14
	<i>Direct Acting Relief Valve</i>		
	RDFA Page 1.10		
OTHER VALVES:			



ISO 07 SANDWICH BODIES



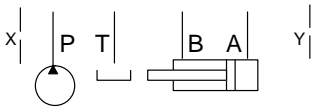
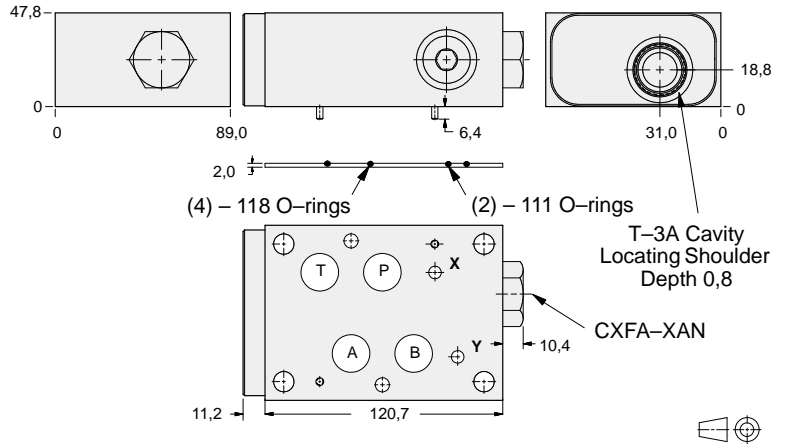
- Aluminium rated to 210 bar and SG Iron rated to 350 bar.
- See page viii for ordering cartridge/body and seals. Pressure ratings, material specifications on page xiv.



FUNCTION

A to T
FF Check T to B

Relief Valves



ALUMINIUM		SG IRON	
Model Code	List Price	Model Code	List Price
CKJ		CKJ/S	

07 RELIEF

TYPICAL CARTRIDGES USED WITH BODIES SHOWN ABOVE

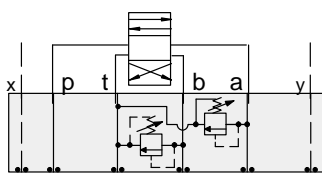
	<i>Pilot Operated Relief Valve</i>		<i>Pilot Operated "Kick-Down" Relief Valve</i>
	RPGC Page 1.06		RQGB Page 1.12
	<i>Pilot Operated, Rapid Response Relief Valve</i>		<i>Air Controlled, Pilot Operated Relief Valve</i>
	RPGE Page 1.08		RPGD Page 1.14
	<i>Direct Acting Relief Valve</i>		
	RDFA Page 1.10		
OTHER VALVES:			



ISO 07 SANDWICH BODIES



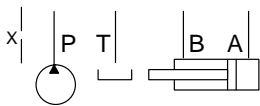
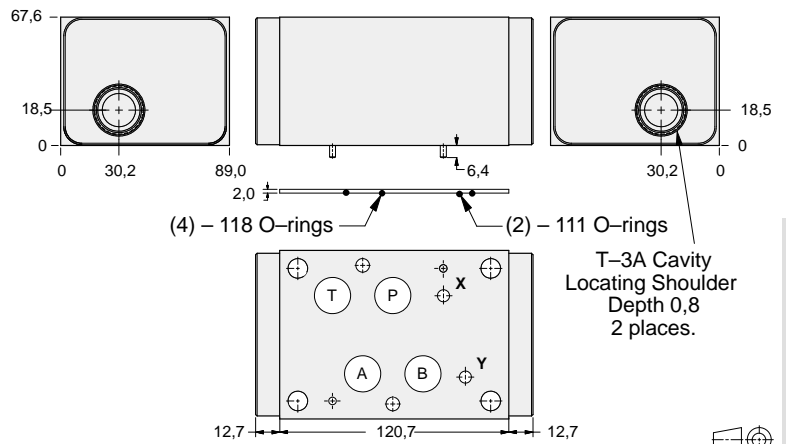
- Aluminium rated to 210 bar and SG Iron rated to 350 bar.
- See page viii for ordering cartridge/body and seals. Pressure ratings, material specifications on page xiv.



FUNCTION

A and B to T
(High Capacity)

Relief Valves



ALUMINIUM		SG IRON	
Model Code	List Price	Part Number	List Price
CKX		CKX/S	

TYPICAL CARTRIDGES USED WITH BODIES SHOWN ABOVE

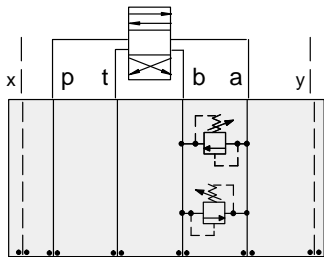
	Pilot Operated Relief Valve		Pilot Operated "Kick-Down" Relief Valve
	RPGC Page 1.06		RQGB Page 1.12
	Pilot Operated, Rapid Response Relief Valve		Air Controlled, Pilot Operated Relief Valve
	RPGE Page 1.08		RPGD Page 1.14
	Direct Acting Relief Valve		
	RDFA Page 1.10		
OTHER VALVES:			



ISO 07 SANDWICH BODIES



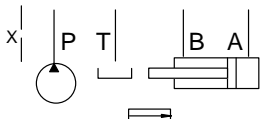
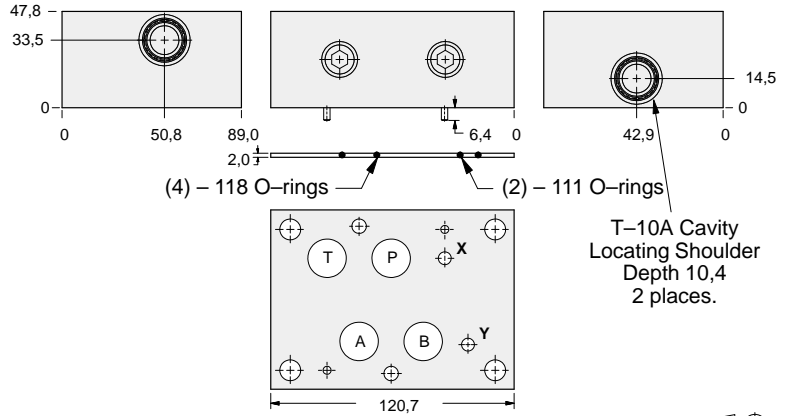
- Aluminium rated to 210 bar and SG Iron rated to 350 bar.
- See page viii for ordering cartridge/body and seals. Pressure ratings, material specifications on page xiv.



FUNCTION

**A to B and
B to A**
(Cross Port)

Relief Valves



ALUMINIUM		SG IRON	
Model Code	List Price	Model Code	List Price
CKY		CKY/S	

07 RELIEF

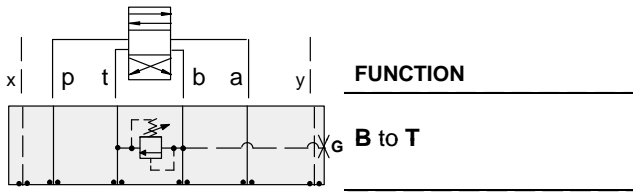
TYPICAL CARTRIDGES USED WITH BODIES SHOWN ABOVE			
	<i>Pilot Operated Relief Valve</i>		<i>Pilot Operated "Kick-Down" Relief Valve</i>
	RPEC Page 1.06		RQEB Page 1.12
	<i>Pilot Operated, Rapid Response Relief Valve</i>		
	RPEE Page 1.08		
	<i>Direct Acting Relief Valve</i>		
	RDDA Page 1.10		
OTHER VALVES:			



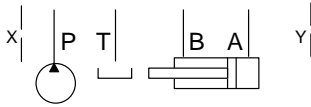
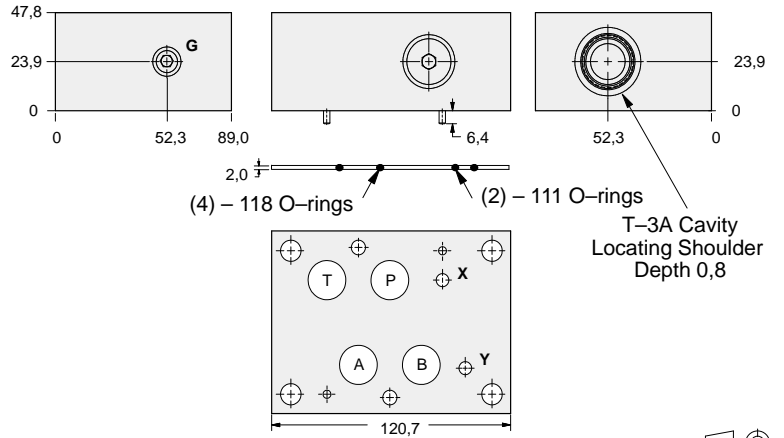
ISO 07 SANDWICH BODIES



- Aluminium rated to 210 bar and SG Iron rated to 350 bar.
- See page viii for ordering cartridge/body and seals. Pressure ratings, material specifications on page xiv.



Relief Valves



Gauge Port (Plugged)	ALUMINIUM		SG IRON	
	Model Code	List Price	Model Code	List Price
.25 NPTF	CKB		CKB/S	
.25 BSPP	CKB/M		CKB/T	

TYPICAL CARTRIDGES USED WITH BODIES SHOWN ABOVE

	Pilot Operated Relief Valve		Pilot Operated "Kick-Down" Relief Valve
	RPGC Page 1.06		RQGB Page 1.12
	Pilot Operated, Rapid Response Relief Valve		Air Controlled, Pilot Operated Relief Valve
	RPGE Page 1.08		RPGD Page 1.14
	Direct Acting Relief Valve		
	RDFA Page 1.10		
OTHER VALVES:			