



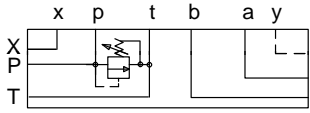
# ISO 07 SANDWICH BODIES



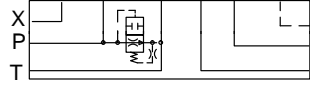
- Aluminium rated to 210 bar and SG Iron rated to 350 bar.
- See page viii for ordering cartridge/body and seals. Pressure ratings, material specifications on page xiv.

## Side Ported Subplates

### FUNCTION



Y Relief P to T  
A  
B

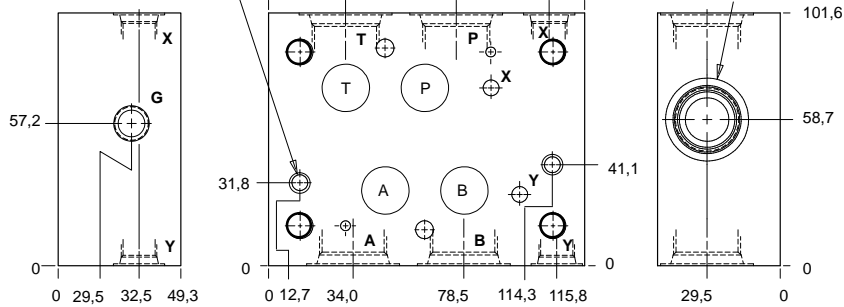


Y Air - B l e e d  
A and Start-Up  
B

Mounting Holes:  
10,4 diameter through hole.  
Counterbore 15,0 diameter  
x 14,2 deep.  
2 places.

T-3A Cavity  
Locating Shoulder  
Depth 4,1

6 Interface Bolt Holes  
x 14,2 deep  
Inch: (4)-.375-16 UNC  
(2)-.250-20 UNC  
Metric: (4)-M20 x 1.5  
(2)-M6 x 1.0



Bolt Hole Interface	Gauge Port	Port P,T,A,B	Port X,Y	ALUMINIUM		SG IRON	
				Model Code	List Price	Model Code	List Price
Inch	.25 NPTF	SAE-12	SAE-6	ZLX		ZLX/S	
Inch	.25 NPTF	.75 NPTF	.25 NFPT	ZLW		ZLW/S	
Metric	.25 BSPP	.75 BSPP	.25 BSPP	ZLZ		ZLZ/S	

07 SUBPLATE

### TYPICAL CARTRIDGES USED WITH BODIES SHOWN ABOVE

	<i>Pilot Operated Relief Valve</i>		<i>Pilot Operated "Kick-Down" Relief Valve</i>
	<b>RPGC Page 1.06</b>		<b>RQGB Page 1.12</b>
	<i>Pilot Operated, Rapid Response Relief Valve</i>		<i>Air Controlled, Pilot Operated Relief Valve</i>
	<b>RPGE Page 1.08</b>		<b>RPGD Page 1.14</b>
	<i>Direct Acting Relief Valve</i>		<i>Air Bleed and Start-up Valve</i>
	<b>RDFA Page 1.10</b>		<b>NQEB Page 10.16</b>
<b>OTHER VALVES:</b>			