



BAR MANIFOLDS

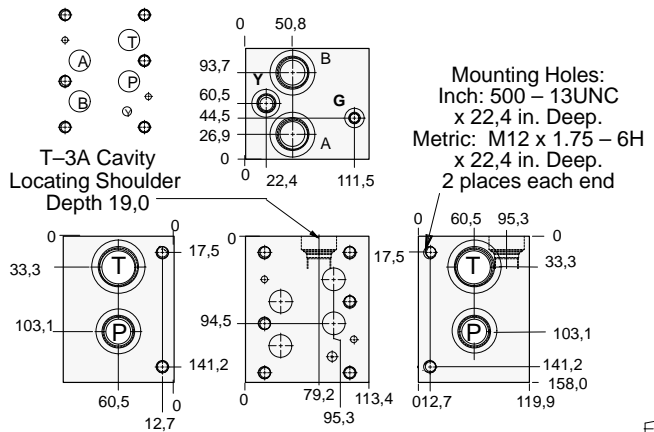
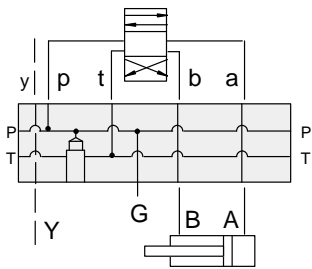


- Aluminium rated to 210 bar and SG Iron rated to 350 bar.
- See page viii for ordering cartridge/body and seals. Pressure ratings, material specifications on page xiv.

ISO 08 Parallel Circuit with Relief Cavity and Y Port

FUNCTION

One Station



Mounting Holes	Part T	Ports A, B, P	Port Y	Gauge Port	ALUMINIUM		SG IRON	
					Model Code	List Price	Model Code	List Price
inch	1.25 NPTF	1.00 NPTF	.375 NPTF	.25 NPTF	VLN		VLN/S	
inch	SAE-20	SAE-16	SAE-8	SAE-4	VLT		VLT/S	
metric	1.25 BSPP	1.00 BSPP	.375 BSPP	.25 BSPP	VLX		VLX/S	

Bar Manifold Mounting Kits to be ordered separately. See page 12.087.

TYPICAL CARTRIDGES USED WITH BODIES SHOWN ABOVE

	Pilot Operated Relief Valve		Direct Acting Relief Valve
	RPGC Page 1.06		RDFA Page 1.10
OTHER VALVES:			

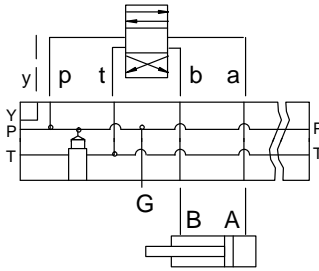


BAR MANIFOLDS

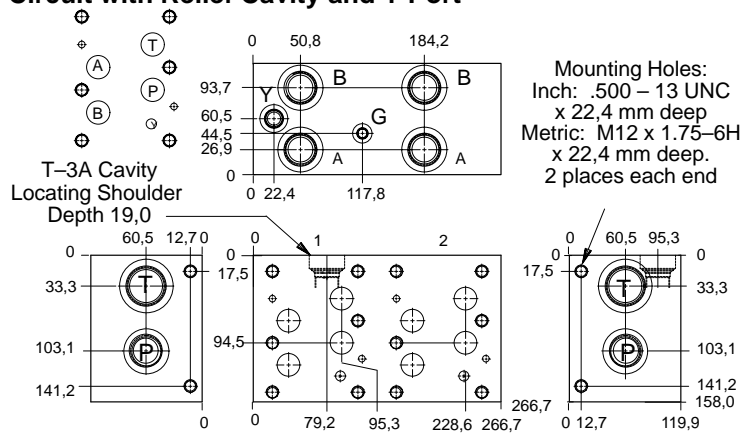


- Aluminium rated to 210 bar and SG Iron rated to 350 bar.
- See page viii for ordering cartridge/body and seals. Pressure ratings, material specifications on page xiv.

ISO 08 Parallel Circuit with Relief Cavity and Y Port



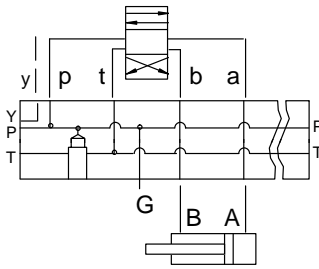
FUNCTION
Two Station



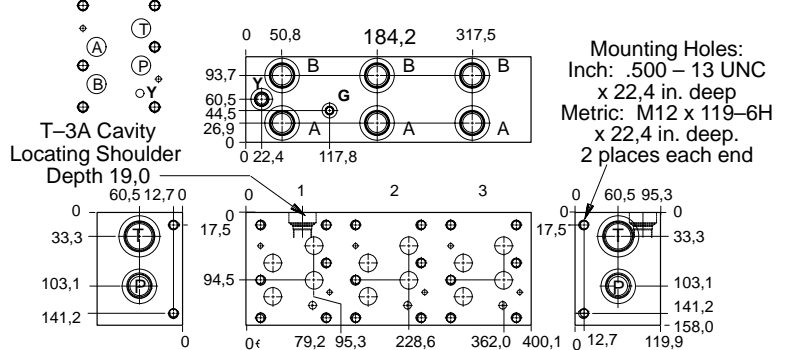
Mounting Holes	Port T	Ports A, B, P	Port Y	Gauge Port	ALUMINIUM		SG IRON	
					Model Code	List Price	Model Code	List Price
inch	1.25 NPTF	1.00 NPTF	.375 NPTF	.25 NPTF	VLP		VLP/S	
inch	SAE-20	SAE-16	SAE-8	SAE-4	VLV		VLV/S	
metric	1.25 BSPP	1.00 BSPP	.375 BSPP	.25 BSPP	VLY		VLY/S	

Bar Manifold Mounting Kits to be ordered separately. See page 12.087.

ISO 08 Parallel Circuit with Relief Cavity and Y Port



FUNCTION
Three Station



Mounting Holes	Port T	Ports A, B, P	Port Y	Gauge Port	ALUMINIUM		SG IRON	
					Model Code	List Price	Model Code	List Price
inch	1.25 NPTF	1.00 NPTF	.375 NPTF	.25 NPTF	VLR		VLR/S	
inch	SAE-20	SAE-16	SAE-8	SAE-4	VLW		VLW/S	
metric	1.25 BSPP	1.00 BSPP	.375 BSPP	.25 BSPP	VLZ		VLZ/S	

Bar Manifold Mounting Kits to be ordered separately. See page 12.087.

TYPICAL CARTRIDGES USED WITH BODIES SHOWN ABOVE

	Pilot Operated Relief Valve		Direct Acting Relief Valve
	RPGC Page 1.06		RDFA Page 1.10
OTHER VALVES:			