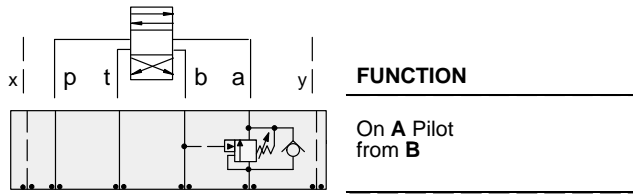




ISO 08 SANDWICH BODIES



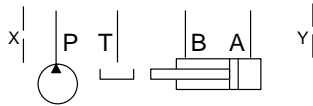
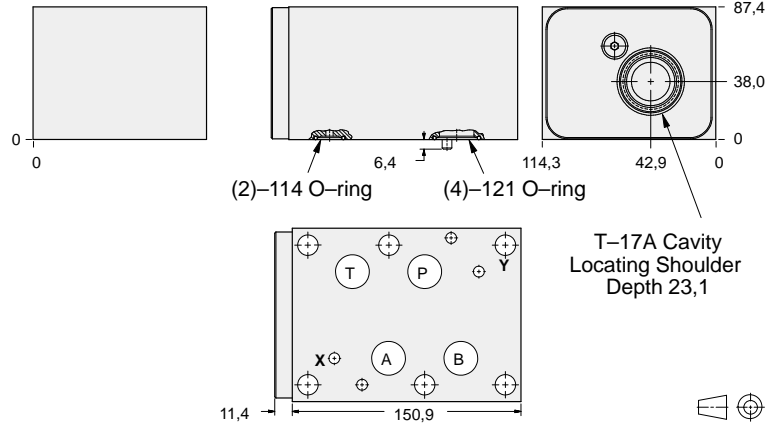
- Aluminium rated to 210 bar and SG Iron rated to 350 bar.
- See page viii for ordering cartridge/body and seals. Pressure ratings, material specifications on page xiv.



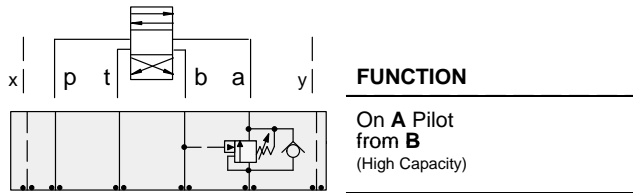
FUNCTION

On A Pilot from B

Counterbalance Valves



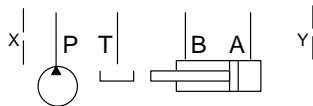
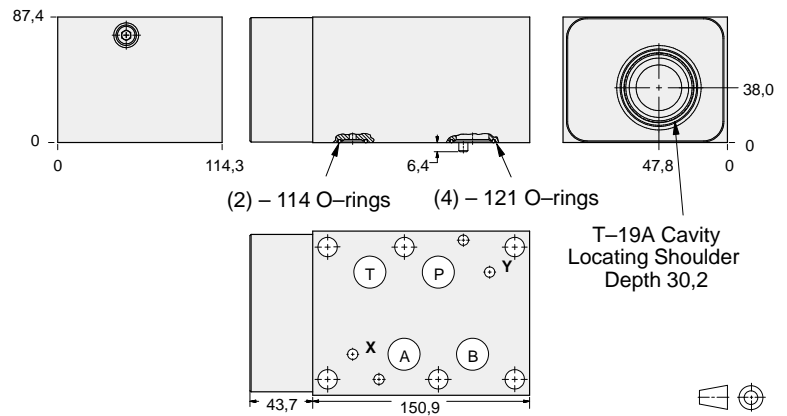
ALUMINIUM		SG IRON	
Model Code	List Price	Model Code	List Price
HBL		HBL/S	



FUNCTION

On A Pilot from B
(High Capacity)

Counterbalance Valves



ALUMINIUM		SG IRON	
Model Code	List Price	Part Number	List Price
HBA		HBA/S	

TYPICAL CARTRIDGES USED WITH BODIES SHOWN ABOVE

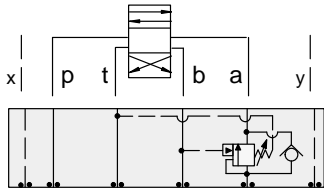
	Counterbalance Valve, 3:1 Pilot Ratio		
	CB*A Page 4.11		
	Counterbalance Valve, 4.5:1 Pilot Ratio		
	CB*G Page 4.13		
	Counterbalance Valve, 10:1 Pilot Ratio		
	CB*H Page 4.15		
OTHER VALVES:			



ISO 08 SANDWICH BODIES



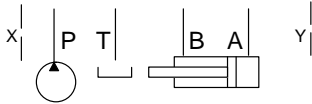
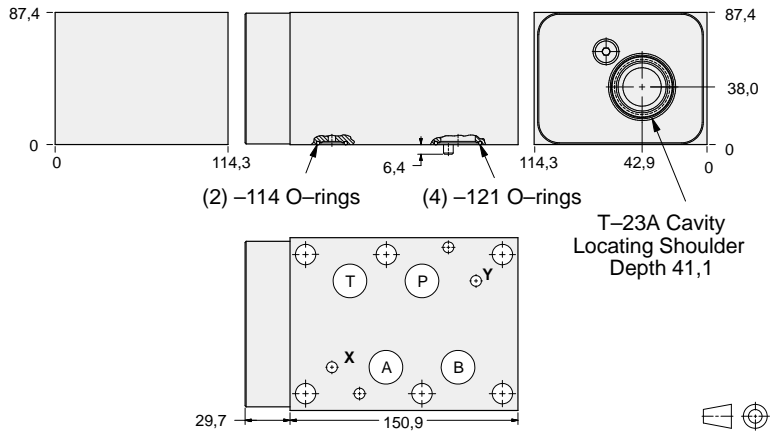
- Aluminium rated to 210 bar and SG Iron rated to 350 bar.
- See page viii for ordering cartridge/body and seals. Pressure ratings, material specifications on page xiv.



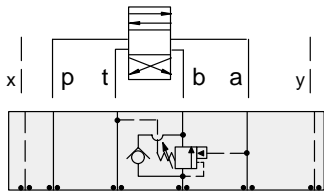
FUNCTION

On **A** Pilot from **B**
Vent to **T**

Counterbalance Valves



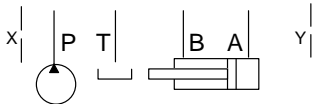
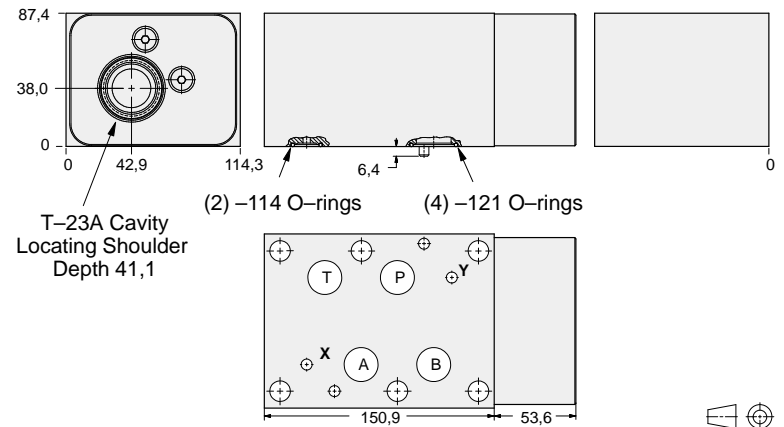
ALUMINIUM		SG IRON	
Model Code	List Price	Model Code	List Price
PBA		PBA/S	



FUNCTION

On **B** Pilot from **A**
Vent to **T**

Counterbalance Valves



ALUMINIUM		SG IRON	
Model Code	List Price	Part Number	List Price
PBB		PBB/S	

08 COUNTERBALANCE

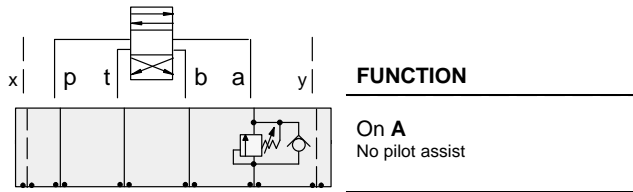
TYPICAL CARTRIDGES USED WITH BODIES SHOWN ABOVE			
	Vented Counterbalance Valve, 3:1 Pilot Ratio		
	CWGA Page 4.19		
	Vented Counterbalance Valve, 5:1 Pilot Ratio		
	CWGG Page 4.21		
OTHER VALVES:			



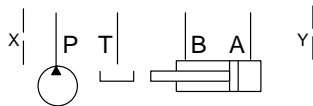
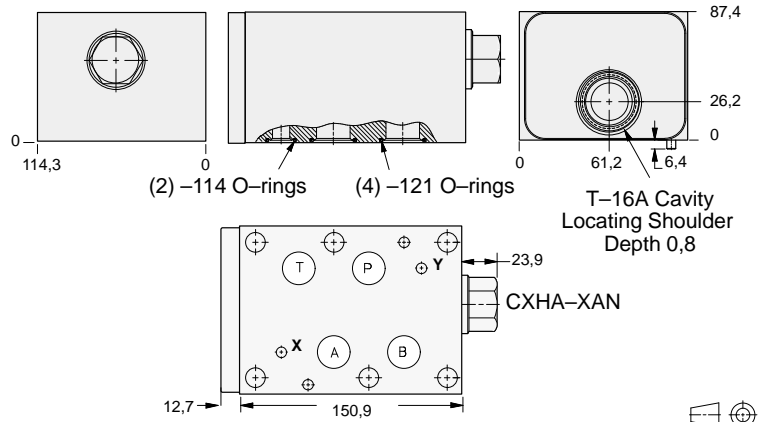
ISO 08 SANDWICH BODIES



- Aluminium rated to 210 bar and SG Iron rated to 350 bar.
- See page viii for ordering cartridge/body and seals. Pressure ratings, material specifications on page xiv.



Counterbalance Valves



ALUMINIUM		SG IRON	
Model Code	List Price	Model Code	List Price
CD4		CD4/S	

TYPICAL CARTRIDGES USED WITH BODIES SHOWN ABOVE			
	Direct Acting Relief Valve		
	RDHA Page 1.09		
OTHER VALVES:			

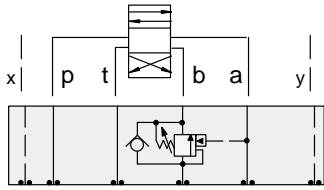
08 COUNTERBALANCE



ISO 08 SANDWICH BODIES



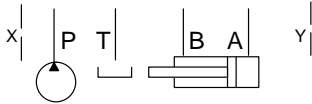
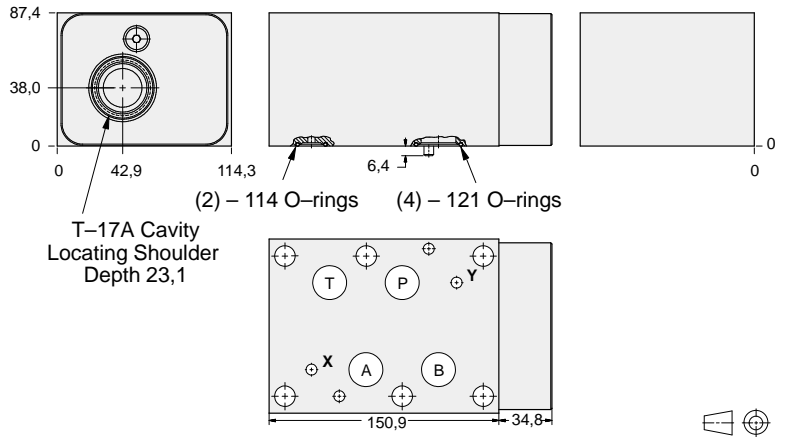
- Aluminium rated to 210 bar and SG Iron rated to 350 bar.
- See page viii for ordering cartridge/body and seals. Pressure ratings, material specifications on page xiv.



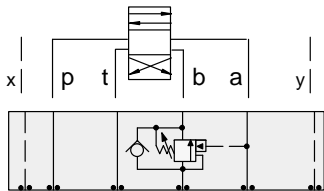
FUNCTION

On B
Pilot from A

Counterbalance Valves



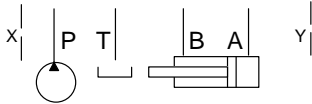
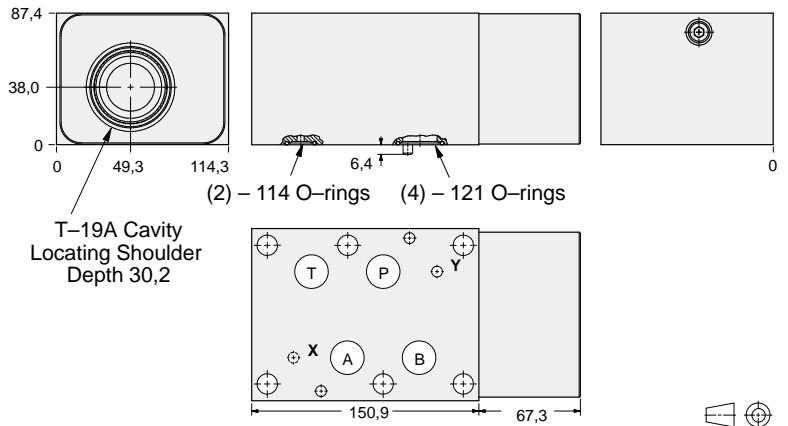
ALUMINIUM		SG IRON	
<i>Model Code</i>	<i>List Price</i>	<i>Model Code</i>	<i>List Price</i>
HBM		HBM/S	



FUNCTION

On B
Pilot from A
(High Capacity)

Counterbalance Valves



ALUMINIUM		SG IRON	
<i>Model Code</i>	<i>List Price</i>	<i>Part Number</i>	<i>List Price</i>
HBB		HBB/S	

08 COUNTERBALANCE

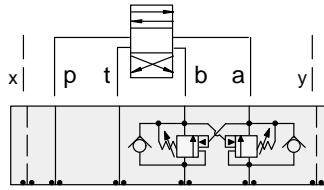
TYPICAL CARTRIDGES USED WITH BODIES SHOWN ABOVE			
	Counterbalance Valve, 3:1 Pilot Ratio		
	CB*A Page 4.11		
	Counterbalance Valve, 4.5:1 Pilot Ratio		
	CB*G Page 4.13		
	Counterbalance Valve, 10:1 Pilot Ratio		
	CB*H Page 4.15		
OTHER VALVES:			



ISO 08 SANDWICH BODIES



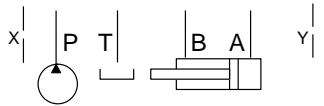
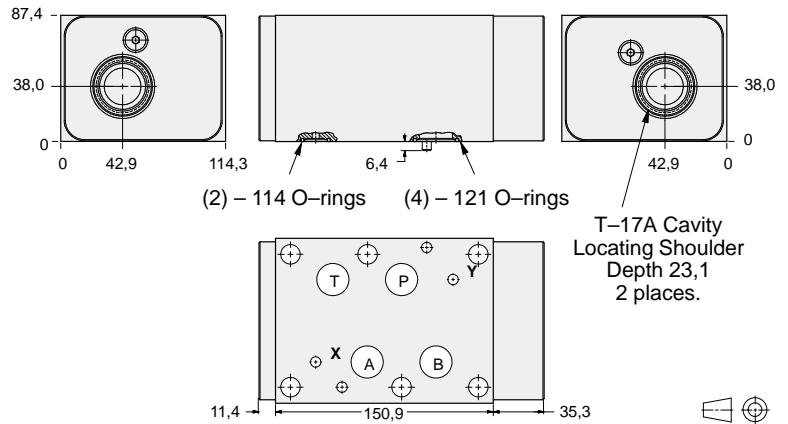
- Aluminium rated to 210 bar and SG Iron rated to 350 bar.
- See page viii for ordering cartridge/body and seals. Pressure ratings, material specifications on page xiv.



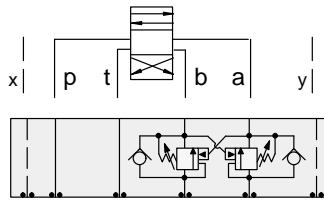
FUNCTION

On **A** and **B**
Cross-Piloted

Counterbalance Valves



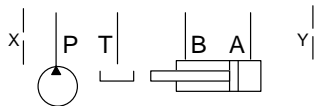
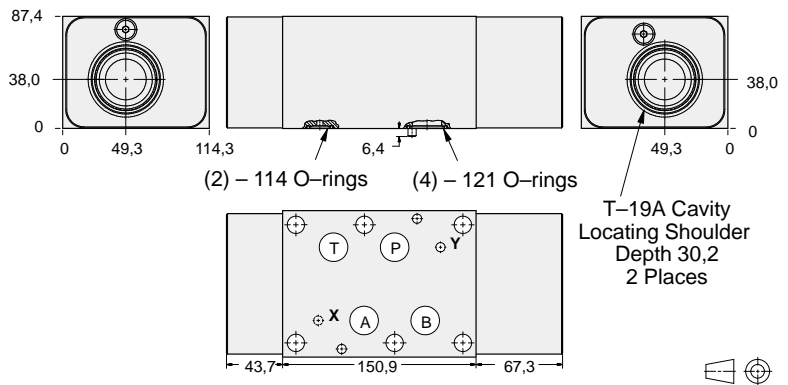
ALUMINIUM		SG IRON	
Model Code	List Price	Model Code	List Price
HBN		HBN/S	



FUNCTION

On **A** and **B**
Cross-Piloted
(High Capacity)

Counterbalance Valves



ALUMINIUM		SG IRON	
Model Code	List Price	Part Number	List Price
HBV		HBV/S	

TYPICAL CARTRIDGES USED WITH BODIES SHOWN ABOVE

	Counterbalance Valve, 3:1 Pilot Ratio		
	CB*A Page 4.11		
	Counterbalance Valve, 4.5:1 Pilot Ratio		
	CB*G Page 4.13		
	Counterbalance Valve, 10:1 Pilot Ratio		
	CB*H Page 4.15		
OTHER VALVES:			

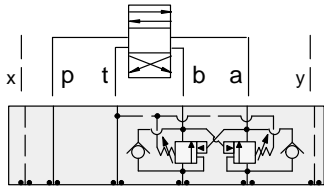
08 COUNTERBALANCE



ISO 08 SANDWICH BODIES



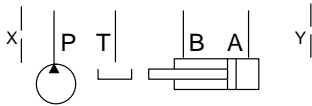
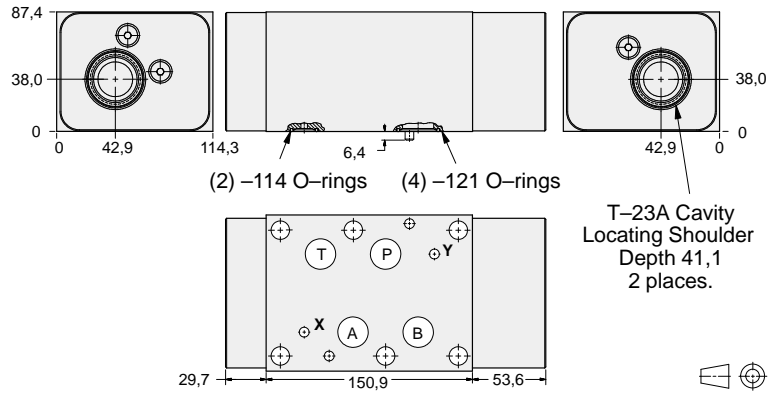
- Aluminium rated to 210 bar and SG Iron rated to 350 bar.
- See page viii for ordering cartridge/body and seals. Pressure ratings, material specifications on page xiv.



FUNCTION

On **A** and **B**
Cross-Piloted
Vents to **T**

Counterbalance Valves



ALUMINIUM		SG IRON	
Model Code	List Price	Model Code	List Price
PBY		PBY/S	

08 COUNTERBALANCE

TYPICAL CARTRIDGES USED WITH BODIES SHOWN ABOVE			
	Vented Counterbalance Valve, 3:1 Pilot Ratio		
	CWGA Page 4.19		
	Vented Counterbalance Valve, 5:1 Pilot Ratio		
	CWGG Page 4.21		
OTHER VALVES:			