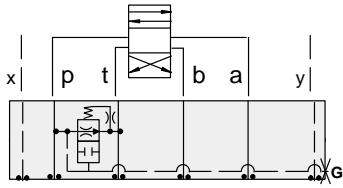




ISO 08 SANDWICH BODIES



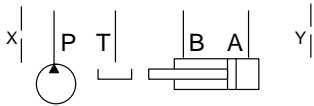
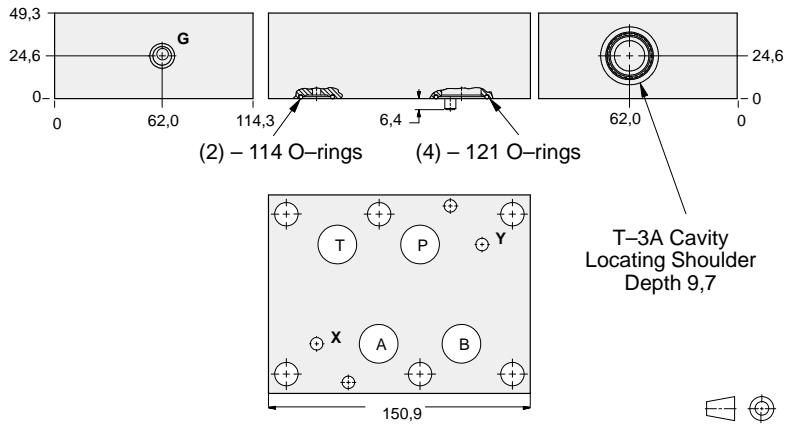
- Aluminium rated to 210 bar and SG Iron rated to 350 bar.
- See page viii for ordering cartridge/body and seals. Pressure ratings, material specifications on page xiv.



FUNCTION

Air-Bleed and Start-Up

Circuit Savers



Gauge Port (Plugged)	ALUMINIUM		SG IRON	
	Model Code	List Price	Model Code	List Price
.25 NPTF	CDP		CDP/S	
.25 BSPP	CDP/M		CDP/T	

08 CIRCUIT SAVER

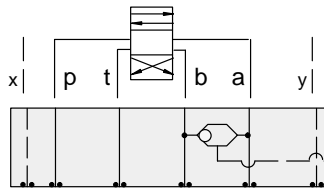
TYPICAL CARTRIDGES USED WITH BODIES SHOWN ABOVE			
	<i>Air Bleed and Start-up Valve</i>		
	NQEB Page 10.16		
OTHER VALVES:			



ISO 08 SANDWICH BODIES



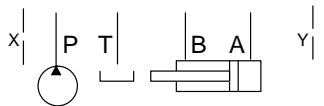
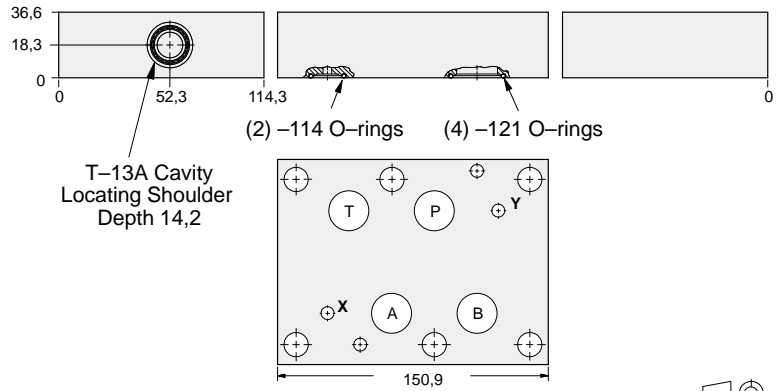
- Aluminium rated to 210 bar and SG Iron rated to 350 bar.
- See page viii for ordering cartridge/body and seals. Pressure ratings, material specifications on page xiv.



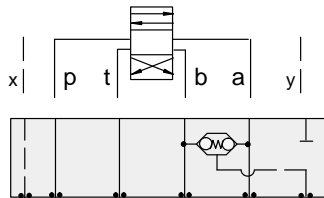
FUNCTION

Shuttle
A and B
Output External

Circuit Savers



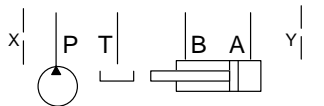
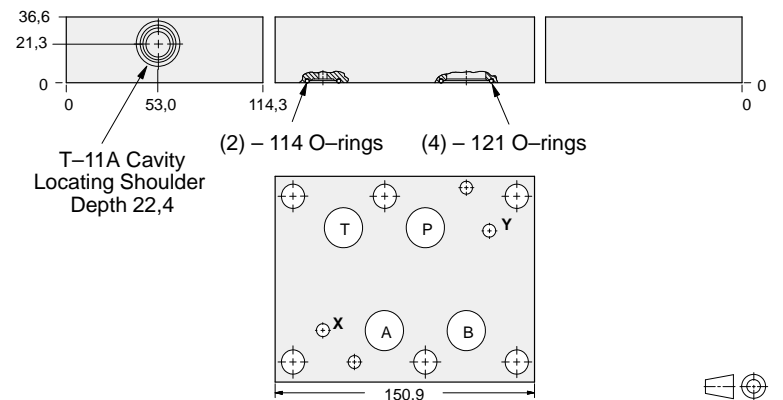
ALUMINIUM		SG IRON	
Model Code	List Price	Model Code	List Price
IBS		IBS/S	



FUNCTION

Checks from
A and B
Output to Y Port

Circuit Savers



ALUMINIUM		SG IRON	
Model Code	List Price	Part Number	List Price
HBS		HBS/S	

TYPICAL CARTRIDGES USED WITH BODIES SHOWN ABOVE			
	2 Port Shuttle Valve, Signal External		
	CSAA Page 10.09, (use with IBS)		
	3 Port Back-to-Back Check Valve, Signal at Port 3		
	CDAB Page 10.10 (use with HBS)		
OTHER VALVES:			

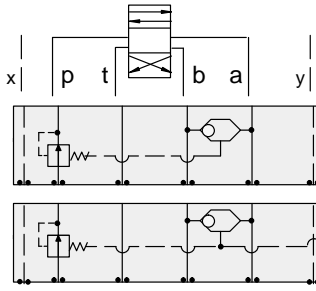
08 CIRCUIT SAVER



ISO 08 SANDWICH BODIES



- Aluminium rated to 210 bar and SG Iron rated to 350 bar.
- See page viii for ordering cartridge/body and seals. Pressure ratings, material specifications on page xiv.

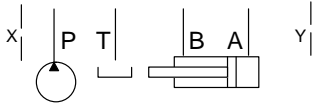
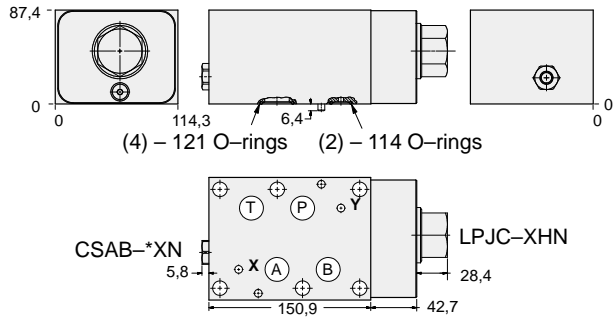


FUNCTION

Pressure Compensator (Restrictive)

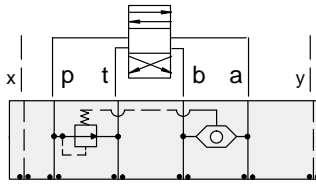
Pressure Compensator (Restrictive) w/Load-Sensing Port

Circuit Savers



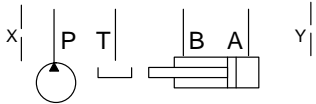
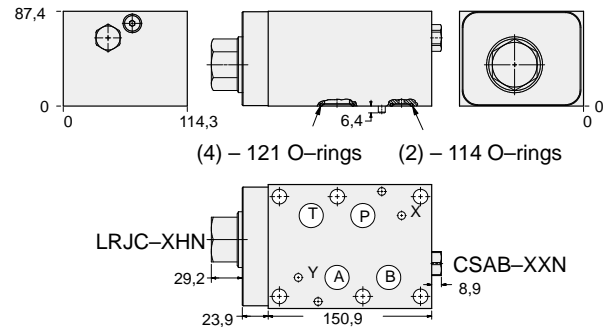
Shuttle Cartridge	External Shuttle Port	ALUMINIUM		SG IRON	
		Model Code	List Price	Model Code	List Price
CSAB-XXN	None	YFIA-XHN-CA		YFIA-XHN-CA/S	
CSAB-AXN	SAE-4	YFIB-XHN-CA		YFIB-XHN-CA/S	
CSAB-BXN	.25 BSPP	YFIB-XHN-CA/M		YFIB-XHN-CA/T	

Circuit Savers



FUNCTION

Pressure Compensator (Bypass)



ALUMINIUM		SG IRON	
Model Code	List Price	Part Number	List Price
YFIC-XHN-CA		YFIC-XHN-CA/S	

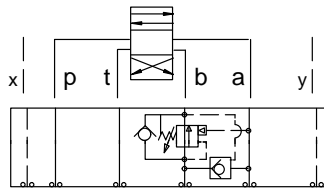
08 CIRCUIT SAVER



ISO 08 SANDWICH BODIES



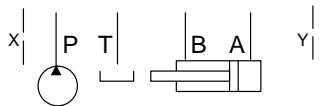
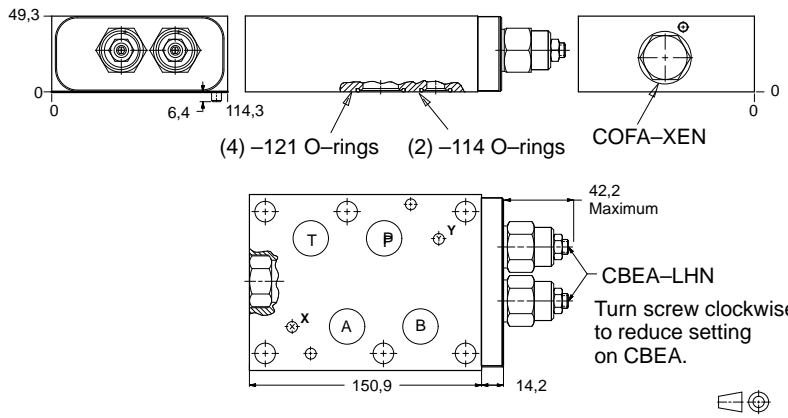
- Aluminium rated to 210 bar and SG Iron rated to 350 bar.
- See page viii for ordering cartridge/body and seals. Pressure ratings, material specifications on page xiv.



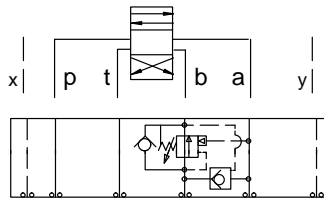
FUNCTION

B to A
Regenerative

Circuit Savers



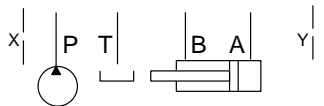
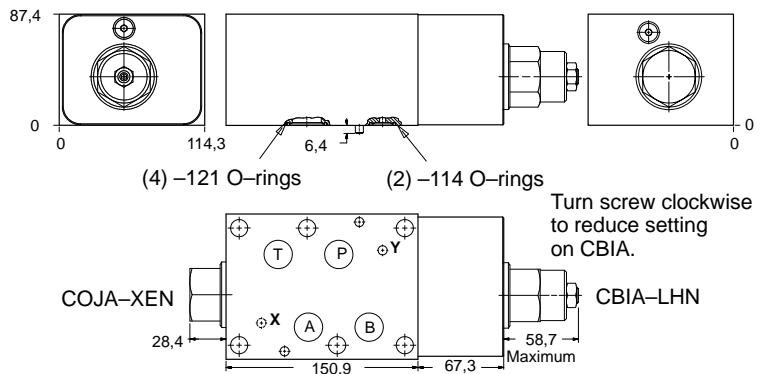
ALUMINIUM		SG IRON	
Model Code	List Price	Model Code	List Price
YDFF-LHN-CA		YDFF-LHN-CA/S	



FUNCTION

B to A
Regenerative
(High Capacity)

Circuit Savers



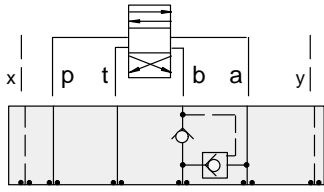
ALUMINIUM		SG IRON	
Model Code	List Price	Part Number	List Price
YDGF-LHN-CA		YDGF-LHN-CA/S	



ISO 08 SANDWICH BODIES



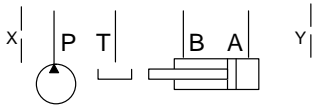
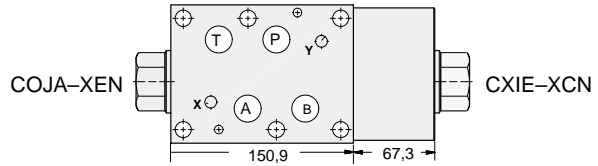
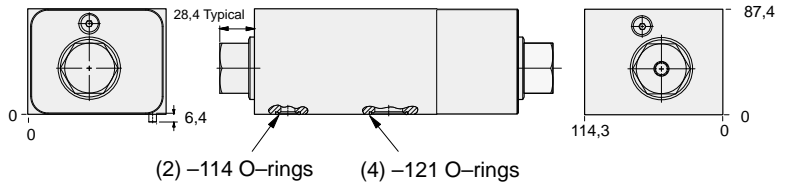
- Aluminium rated to 210 bar and SG Iron rated to 350 bar.
- See page viii for ordering cartridge/body and seals. Pressure ratings, material specifications on page xiv.



FUNCTION

B to A
Regenerative
(Full Time)

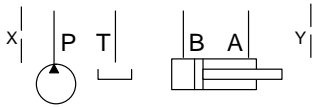
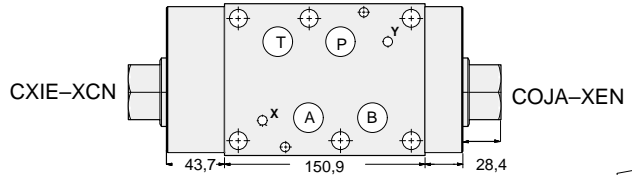
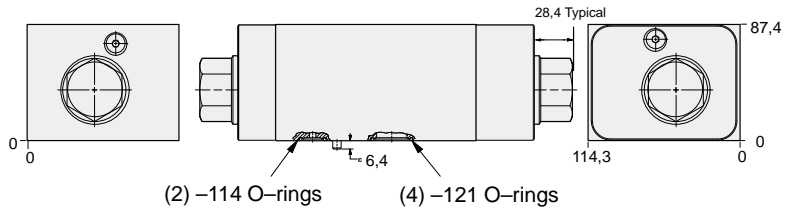
Circuit Savers



FUNCTION

A to B
Regenerative
(Full Time)

Circuit Savers



ALUMINIUM		SG IRON	
Model Code	List Price	Model Code	List Price
YDGH-XCN-CA		YDGH-XCN-CA/S	

ALUMINIUM		SG IRON	
Model Code	List Price	Part Number	List Price
YDGI-XCN-CA		YDGI-XCN-CA/S	

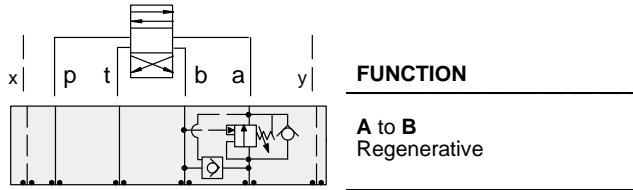
08 CIRCUIT SAVER



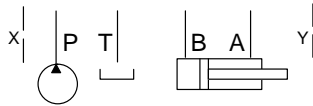
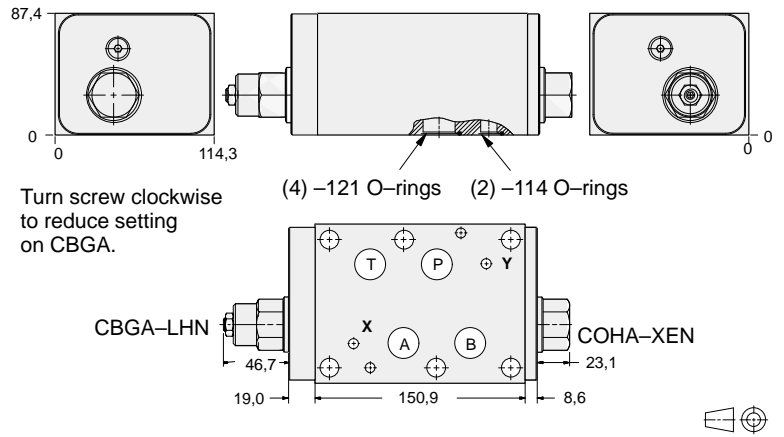
ISO 08 SANDWICH BODIES



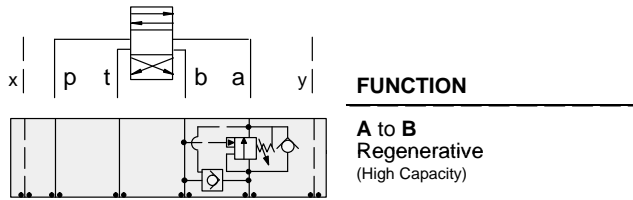
- Aluminium rated to 210 bar and SG Iron rated to 350 bar.
- See page viii for ordering cartridge/body and seals. Pressure ratings, material specifications on page xiv.



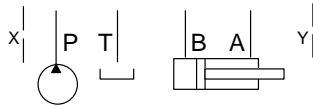
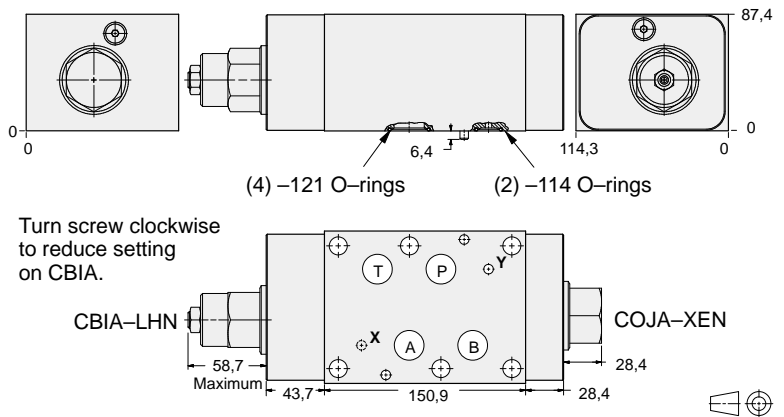
Circuit Savers



ALUMINIUM		SG IRON	
Model Code	List Price	Model Code	List Price
YDFJ-LHN-CA		YDFJ-LHN-CA/S	



Circuit Savers



ALUMINIUM		SG IRON	
Model Code	List Price	Part Number	List Price
YDGE-LHN-CA		YDGE-LHN-CA/S	