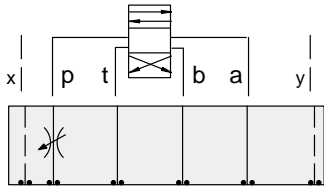




ISO 08 SANDWICH BODIES



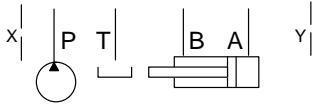
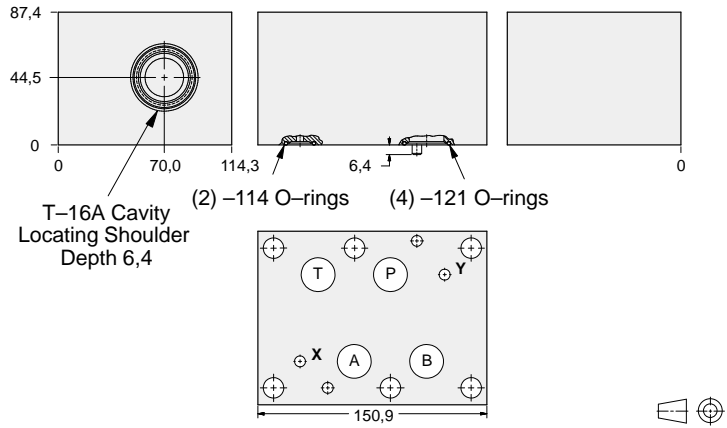
- Aluminium rated to 210 bar and SG Iron rated to 350 bar.
- See page viii for ordering cartridge/body and seals. Pressure ratings, material specifications on page xiv.



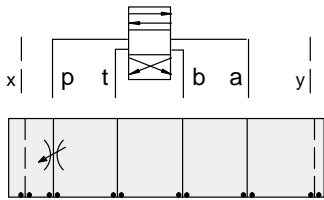
FUNCTION

Meter-In P

Flow Control Valves



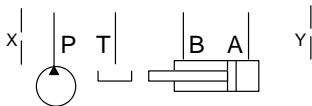
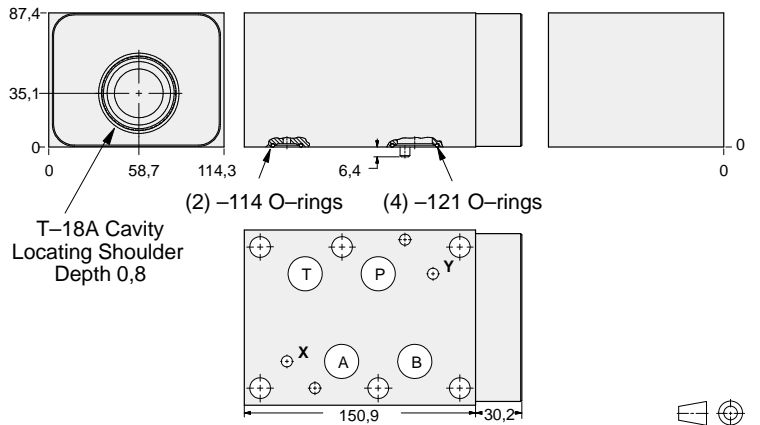
| ALUMINIUM | | SG IRON | |
|-------------------|-------------------|-------------------|-------------------|
| <i>Model Code</i> | <i>List Price</i> | <i>Model Code</i> | <i>List Price</i> |
| IBP | | IBP/S | |



FUNCTION

Meter-In P
(High Capacity)

Flow Control Valves



| ALUMINIUM | | SG IRON | |
|-------------------|-------------------|--------------------|-------------------|
| <i>Model Code</i> | <i>List Price</i> | <i>Part Number</i> | <i>List Price</i> |
| IBO | | IBO/S | |

TYPICAL CARTRIDGES USED WITH BODIES SHOWN ABOVE

| | | | |
|----------------------|---|--|--|
| | <i>Fully Adjustable Needle Valve</i> | | |
| | NF*C Page 5.13 | | |
| | <i>Fixed Orifice, Pressure-Compensated Flow Control</i> | | |
| | FX*A Page 5.21 | | |
| OTHER VALVES: | | | |

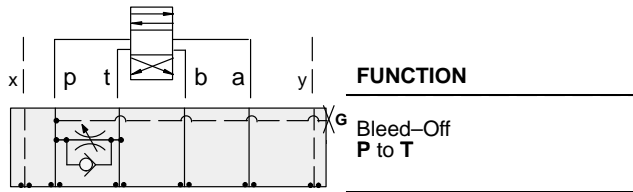
08 FLOW CONTROL



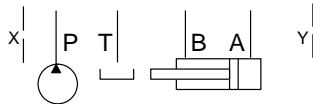
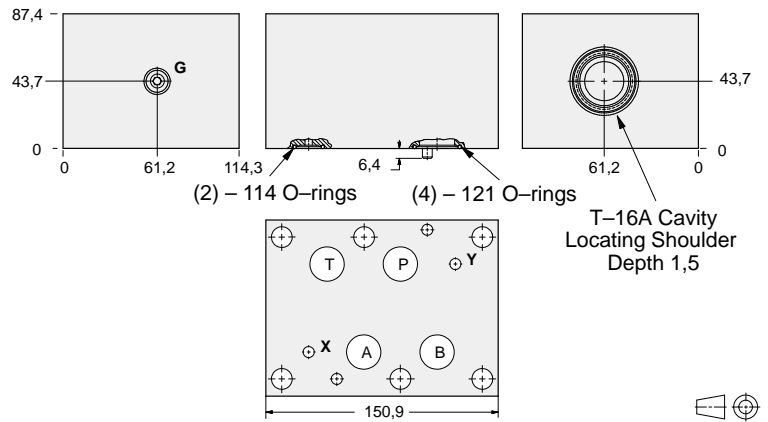
ISO 08 SANDWICH BODIES



- Aluminium rated to 210 bar and SG Iron rated to 350 bar.
- See page viii for ordering cartridge/body and seals. Pressure ratings, material specifications on page xiv.



Flow Control Valves



| Gauge Port (Plugged) | ALUMINIUM | | SG IRON | |
|-------------------------|--------------|------------|--------------|------------|
| | Model Code | List Price | Model Code | List Price |
| .25 NPTF | CDO | | CDO/S | |
| .25 BSPP | CDO/M | | CDO/T | |

| TYPICAL CARTRIDGES USED WITH BODIES SHOWN ABOVE | | | |
|---|--|--|--|
| | Fully Adjustable Needle Valve | | Fixed Orifice, Pressure-Compensated Flow Control |
| | NFEC Page 5.13 | | FXEA Page 5.21 |
| | Fully Adjustable Needle Valve with Reverse Free Flow Check | | Fixed Orifice, Pressure-Compensated Flow Control with Reverse Free Flow Check |
| | NCFB Page 5.17 | | FCEB Page 5.23 |
| | Fully Adjustable Needle Valve with Reverse Free Flow Check, Low Flow | | Fully Adjustable, Pressure-Compensated Flow Control with Reverse Free Flow Check |
| | NCFC Page 5.19 | | FDEA Page 5.25 |
| OTHER VALVES: | CNGC | | |

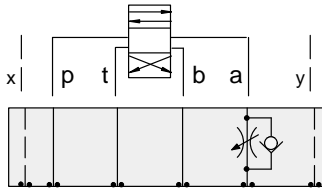
08 FLOW CONTROL



ISO 08 SANDWICH BODIES



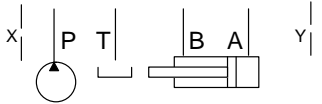
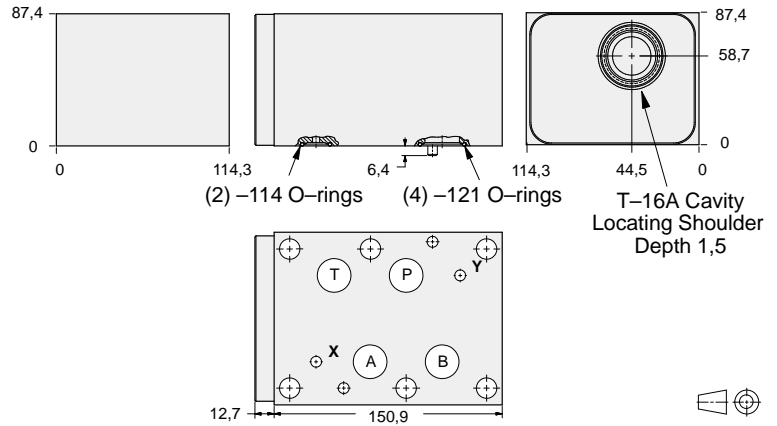
- Aluminium rated to 210 bar and SG Iron rated to 350 bar.
- See page viii for ordering cartridge/body and seals. Pressure ratings, material specifications on page xiv.



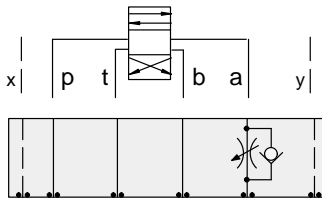
FUNCTION

Meter-In A

Flow Control Valves



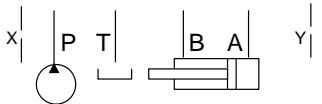
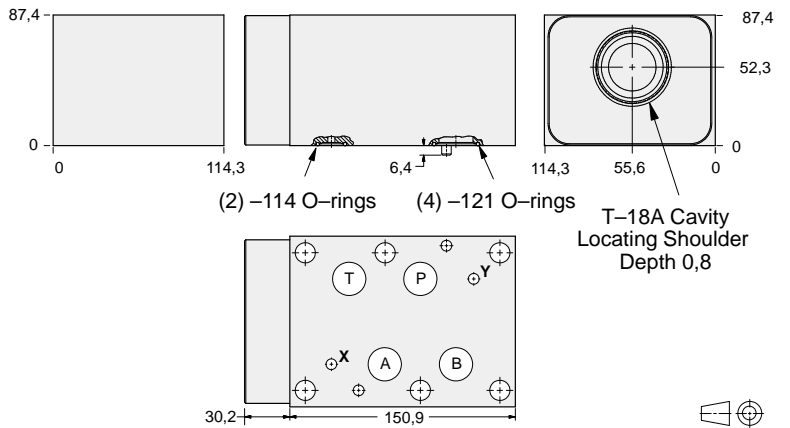
| ALUMINIUM | | SG IRON | |
|------------|------------|--------------|------------|
| Model Code | List Price | Model Code | List Price |
| IBC | | IBC/S | |



FUNCTION

Meter-In A
(High Capacity)

Flow Control Valves



| ALUMINIUM | | SG IRON | |
|------------|------------|--------------|------------|
| Model Code | List Price | Part Number | List Price |
| IBG | | IBG/S | |

TYPICAL CARTRIDGES USED WITH BODIES SHOWN ABOVE

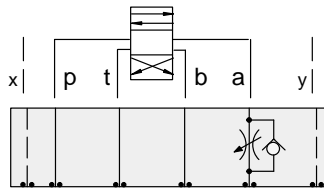
| | | | |
|----------------------|--|--|--|
| | Fully Adjustable Needle Valve | | Fixed Orifice, Pressure-Compensated Flow Control |
| | NF*C Page 5.13 | | FX*A Page 5.21 |
| | Fully Adjustable Needle Valve with Reverse Free Flow Check | | Fixed Orifice, Pressure-Compensated Flow Control with Reverse Free Flow Check |
| | NC*B Page 5.17 | | FC*B Page 5.23 |
| | Fully Adjustable Needle Valve with Reverse Free Flow Check, Low Flow | | Fully Adjustable, Pressure-Compensated Flow Control with Reverse Free Flow Check |
| | NC*C Page 5.19 | | FD*A Page 5.25 |
| OTHER VALVES: | CN*C | | |



ISO 08 SANDWICH BODIES



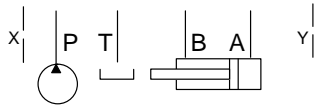
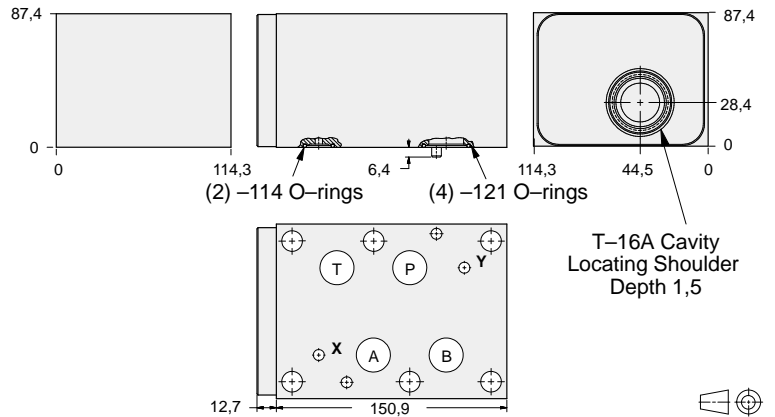
- Aluminium rated to 210 bar and SG Iron rated to 350 bar.
- See page viii for ordering cartridge/body and seals. Pressure ratings, material specifications on page xiv.



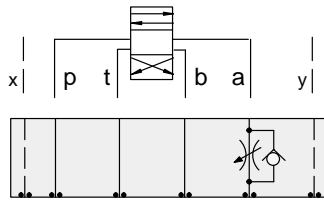
FUNCTION

Meter-Out A

Flow Control Valves



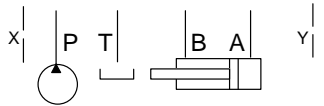
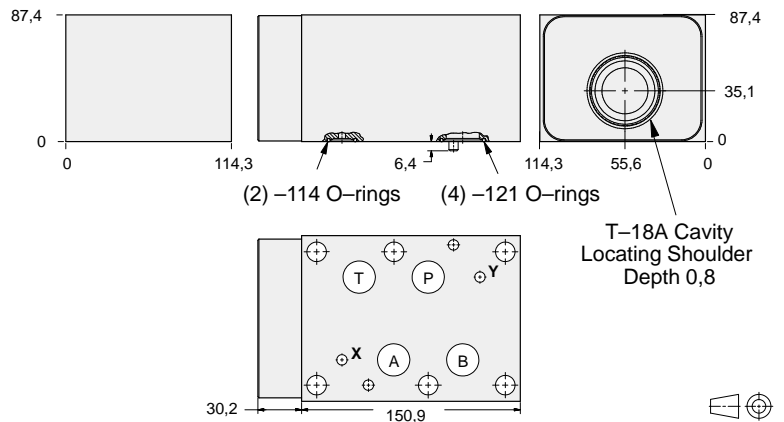
| ALUMINIUM | | SG IRON | |
|------------|------------|--------------|------------|
| Model Code | List Price | Model Code | List Price |
| IBA | | IBA/S | |



FUNCTION

Meter-Out A
(High Capacity)

Flow Control Valves



| ALUMINIUM | | SG IRON | |
|------------|------------|--------------|------------|
| Model Code | List Price | Part Number | List Price |
| IBE | | IBE/S | |

TYPICAL CARTRIDGES USED WITH BODIES SHOWN ABOVE

| | | | |
|---------------|--|--|--|
| | Fully Adjustable Needle Valve | | Fixed Orifice, Pressure-Compensated Flow Control |
| | NF*C Page 5.13 | | FX*A Page 5.21 |
| | Fully Adjustable Needle Valve with Reverse Free Flow Check | | Fixed Orifice, Pressure-Compensated Flow Control with Reverse Free Flow Check |
| | NC*B Page 5.17 | | FC*B Page 5.23 |
| | Fully Adjustable Needle Valve with Reverse Free Flow Check, Low Flow | | Fully Adjustable, Pressure-Compensated Flow Control with Reverse Free Flow Check |
| | NC*C Page 5.19 | | FD*A Page 5.25 |
| OTHER VALVES: | CN*C | | |

08 FLOW CONTROL

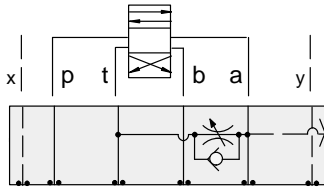


ISO 08 SANDWICH BODIES



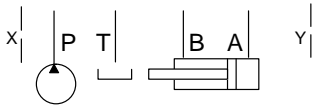
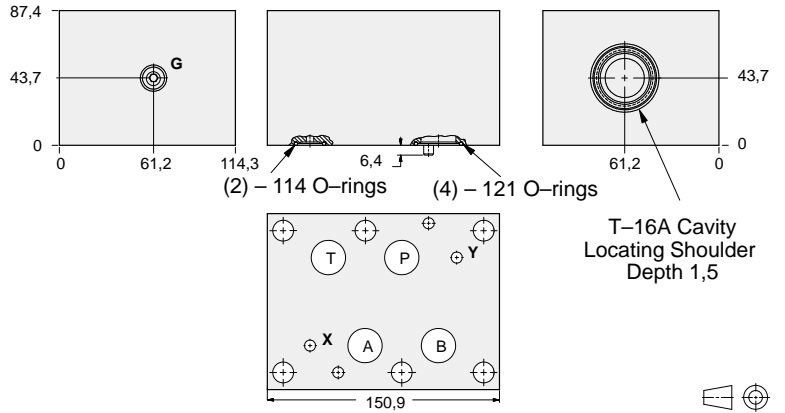
- Aluminium rated to 210 bar and SG Iron rated to 350 bar.
- See page viii for ordering cartridge/body and seals. Pressure ratings, material specifications on page xiv.

Flow Control Valves



FUNCTION

Bleed-Off
A to T



| Gauge Port (Plugged) | ALUMINIUM | | SG IRON | |
|-------------------------|------------|------------|------------|------------|
| | Model Code | List Price | Model Code | List Price |
| .25 NPTF | CDC | | CDC/S | |
| .25 BSPP | CDC/M | | CDC/T | |

TYPICAL CARTRIDGES USED WITH BODIES SHOWN ABOVE

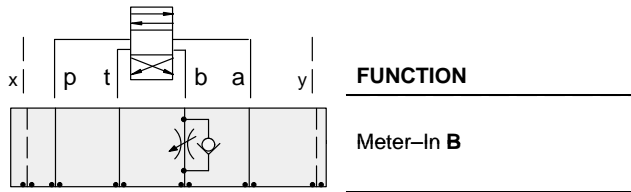
| | | | |
|---------------|--|--|--|
| | Fully Adjustable Needle Valve | | Fixed Orifice, Pressure-Compensated Flow Control |
| | NFEC Page 5.13 | | FXEA Page 5.21 |
| | Fully Adjustable Needle Valve with Reverse Free Flow Check | | Fixed Orifice, Pressure-Compensated Flow Control with Reverse Free Flow Check |
| | NCFB Page 5.17 | | FCEB Page 5.23 |
| | Fully Adjustable Needle Valve with Reverse Free Flow Check, Low Flow | | Fully Adjustable, Pressure-Compensated Flow Control with Reverse Free Flow Check |
| | NCFC Page 5.19 | | FDEA Page 5.25 |
| OTHER VALVES: | CNGC | | |



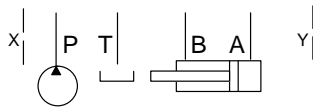
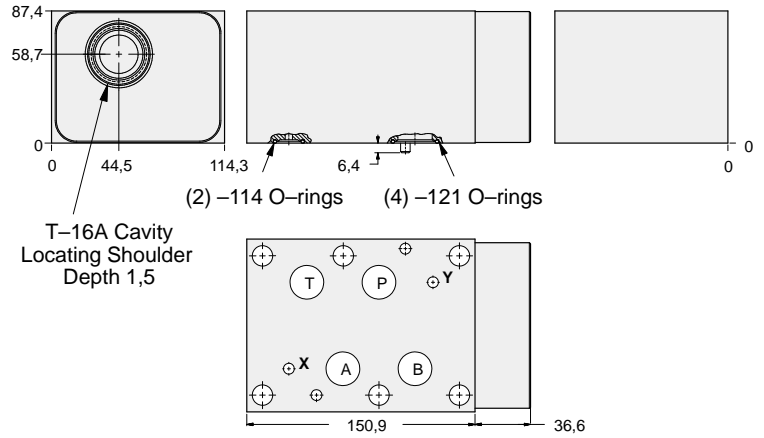
ISO 08 SANDWICH BODIES



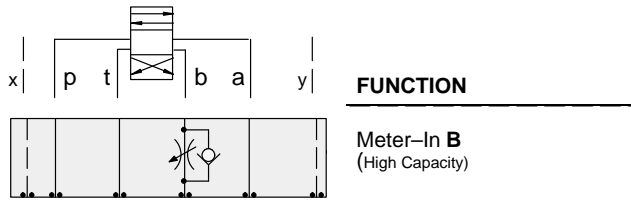
- Aluminium rated to 210 bar and SG Iron rated to 350 bar.
- See page viii for ordering cartridge/body and seals. Pressure ratings, material specifications on page xiv.



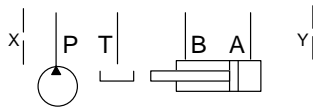
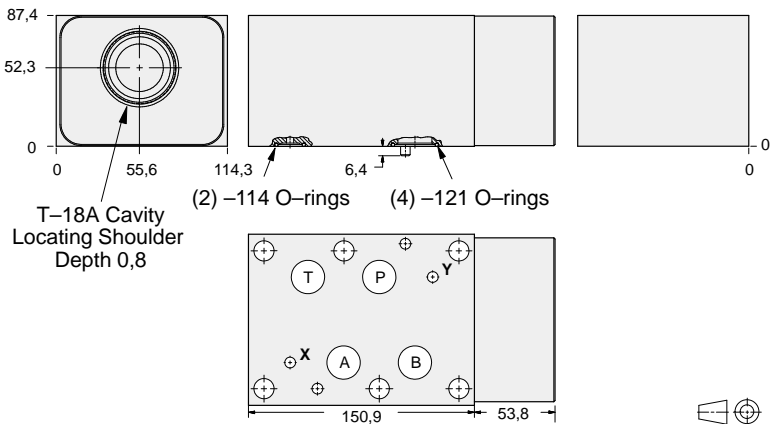
Flow Control Valves



| ALUMINIUM | | SG IRON | |
|------------|------------|--------------|------------|
| Model Code | List Price | Model Code | List Price |
| IBD | | IBD/S | |



Flow Control Valves



| ALUMINIUM | | SG IRON | |
|------------|------------|--------------|------------|
| Model Code | List Price | Part Number | List Price |
| IBH | | IBH/S | |

TYPICAL CARTRIDGES USED WITH BODIES SHOWN ABOVE

| | | | |
|---------------|--|--|--|
| | Fully Adjustable Needle Valve | | Fixed Orifice, Pressure-Compensated Flow Control |
| | NF*C Page 5.13 | | FX*A Page 5.21 |
| | Fully Adjustable Needle Valve with Reverse Free Flow Check | | Fixed Orifice, Pressure-Compensated Flow Control with Reverse Free Flow Check |
| | NC*B Page 5.17 | | FC*B Page 5.23 |
| | Fully Adjustable Needle Valve with Reverse Free Flow Check, Low Flow | | Fully Adjustable, Pressure-Compensated Flow Control with Reverse Free Flow Check |
| | NC*C Page 5.19 | | FD*A Page 5.25 |
| OTHER VALVES: | CN*C | | |

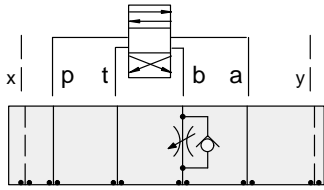
08 FLOW CONTROL



ISO 08 SANDWICH BODIES



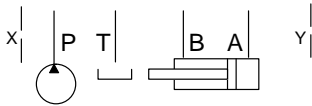
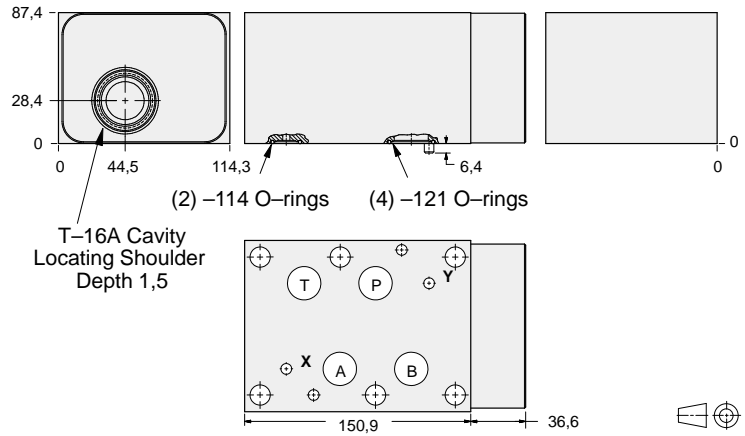
- Aluminium rated to 210 bar and SG Iron rated to 350 bar.
- See page viii for ordering cartridge/body and seals. Pressure ratings, material specifications on page xiv.



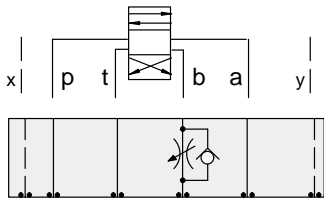
FUNCTION

Meter-Out B

Flow Control Valves



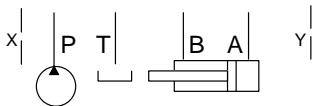
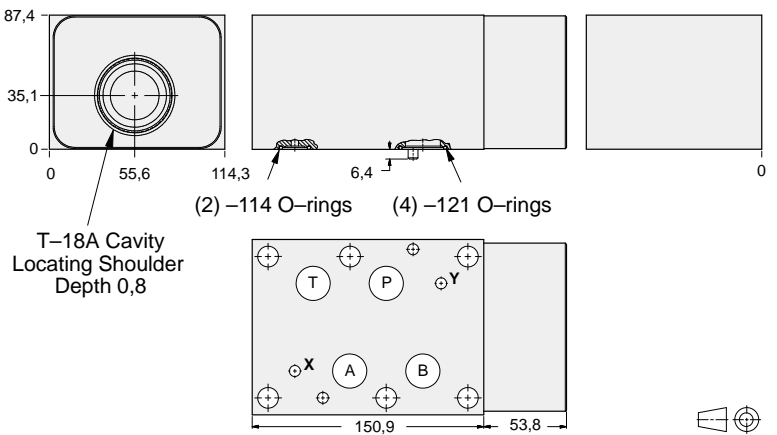
| ALUMINIUM | | SG IRON | |
|------------|------------|--------------|------------|
| Model Code | List Price | Model Code | List Price |
| IBB | | IBB/S | |



FUNCTION

Meter-Out B
(High Capacity)

Flow Control Valves



| ALUMINIUM | | SG IRON | |
|------------|------------|--------------|------------|
| Model Code | List Price | Part Number | List Price |
| IBF | | IBF/S | |

TYPICAL CARTRIDGES USED WITH BODIES SHOWN ABOVE

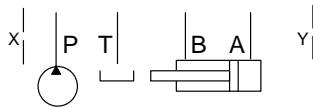
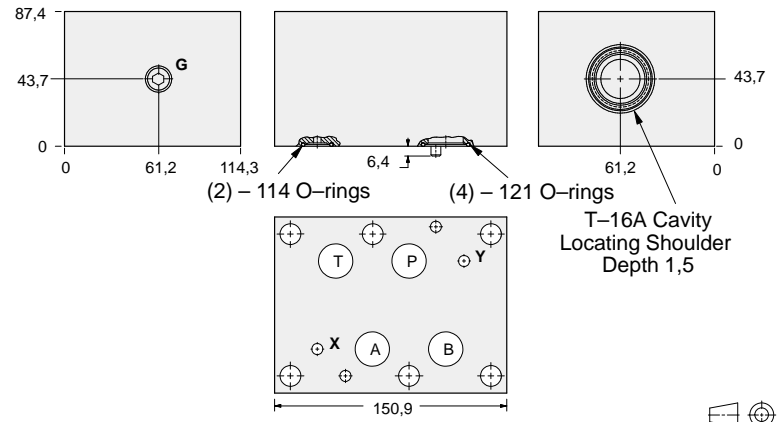
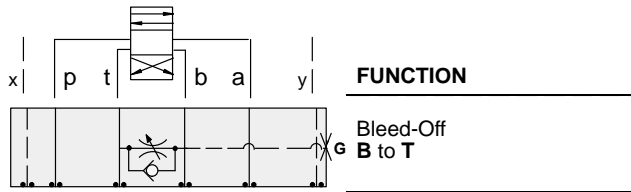
| | | | |
|----------------------|--|--|--|
| | Fully Adjustable Needle Valve | | Fixed Orifice, Pressure-Compensated Flow Control |
| | NF*C Page 5.13 | | FX*A Page 5.21 |
| | Fully Adjustable Needle Valve with Reverse Free Flow Check | | Fixed Orifice, Pressure-Compensated Flow Control with Reverse Free Flow Check |
| | NC*B Page 5.17 | | FC*B Page 5.23 |
| | Fully Adjustable Needle Valve with Reverse Free Flow Check, Low Flow | | Fully Adjustable, Pressure-Compensated Flow Control with Reverse Free Flow Check |
| | NC*C Page 5.19 | | FD*A Page 5.25 |
| OTHER VALVES: | CN*C | | |



ISO 08 SANDWICH BODIES



- Aluminium rated to 210 bar and SG Iron rated to 350 bar.
- See page viii for ordering cartridge/body and seals. Pressure ratings, material specifications on page xiv.



| Gauge Port (Plugged) | ALUMINIUM | | SG IRON | |
|-------------------------|--------------|------------|--------------|------------|
| | Model Code | List Price | Part Number | List Price |
| .25 NPTF | CDD | | CDD/S | |
| .25 BSPP | CDD/M | | CDD/T | |

| TYPICAL CARTRIDGES USED WITH BODIES SHOWN ABOVE | | | |
|---|--|--|--|
| | Fully Adjustable Needle Valve | | Fixed Orifice, Pressure-Compensated Flow Control |
| | NFEC Page 5.13 | | FXEA Page 5.21 |
| | Fully Adjustable Needle Valve with Reverse Free Flow Check | | Fixed Orifice, Pressure-Compensated Flow Control with Reverse Free Flow Check |
| | NCFB Page 5.17 | | FCEB Page 5.23 |
| | Fully Adjustable Needle Valve with Reverse Free Flow Check, Low Flow | | Fully Adjustable, Pressure-Compensated Flow Control with Reverse Free Flow Check |
| | NCFC Page 5.19 | | FDEA Page 5.25 |
| OTHER VALVES: | CNGC | | |

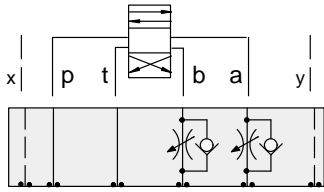
08 FLOW CONTROL



ISO 08 SANDWICH BODIES



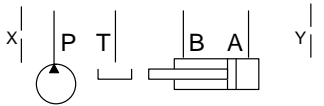
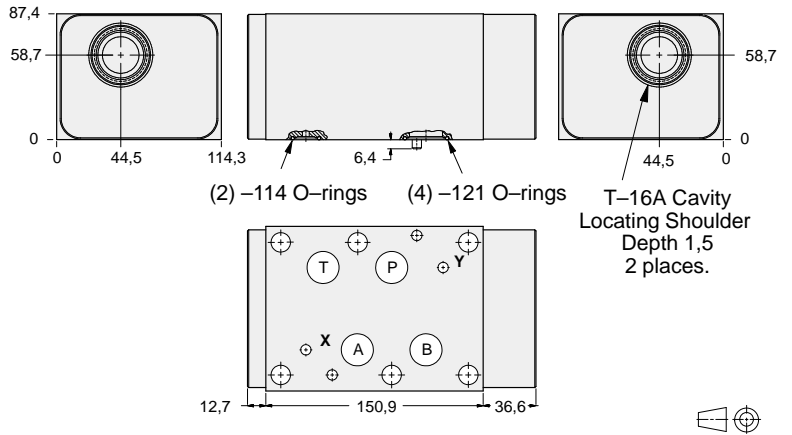
- Aluminium rated to 210 bar and SG Iron rated to 350 bar.
- See page viii for ordering cartridge/body and seals. Pressure ratings, material specifications on page xiv.



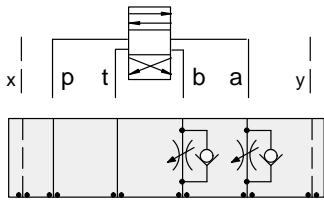
FUNCTION

Meter-In
A and B

Flow Control Valves



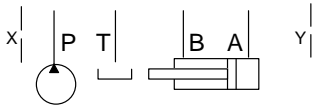
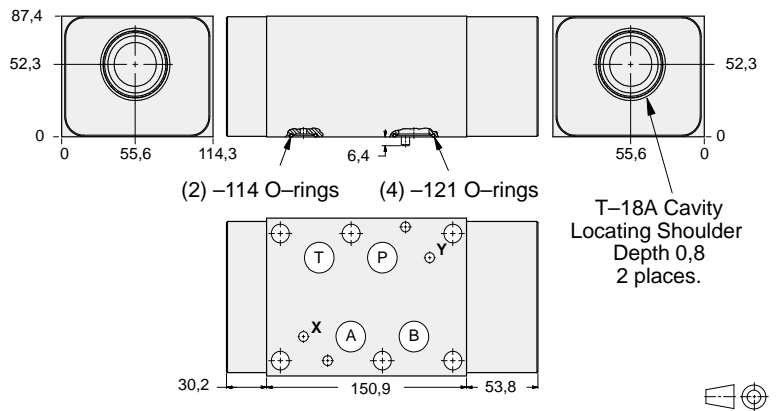
| ALUMINIUM | | SG IRON | |
|------------|------------|--------------|------------|
| Model Code | List Price | Model Code | List Price |
| IBX | | IBX/S | |



FUNCTION

Meter-In
A and B
(High Capacity)

Flow Control Valves



| ALUMINIUM | | SG IRON | |
|------------|------------|--------------|------------|
| Model Code | List Price | Part Number | List Price |
| IBZ | | IBZ/S | |

TYPICAL CARTRIDGES USED WITH BODIES SHOWN ABOVE

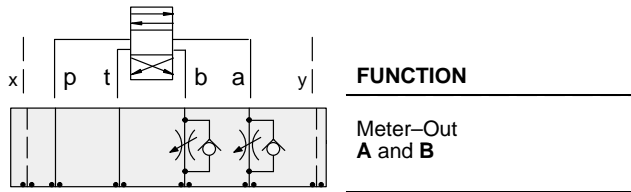
| | | | |
|---------------|--|--|--|
| | Fully Adjustable Needle Valve | | Fixed Orifice, Pressure-Compensated Flow Control |
| | NF*C Page 5.13 | | FX*A Page 5.21 |
| | Fully Adjustable Needle Valve with Reverse Free Flow Check | | Fixed Orifice, Pressure-Compensated Flow Control with Reverse Free Flow Check |
| | NC*B Page 5.17 | | FC*B Page 5.23 |
| | Fully Adjustable Needle Valve with Reverse Free Flow Check, Low Flow | | Fully Adjustable, Pressure-Compensated Flow Control with Reverse Free Flow Check |
| | NC*C Page 5.19 | | FD*A Page 5.25 |
| OTHER VALVES: | CN*C | | |



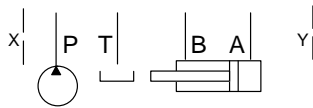
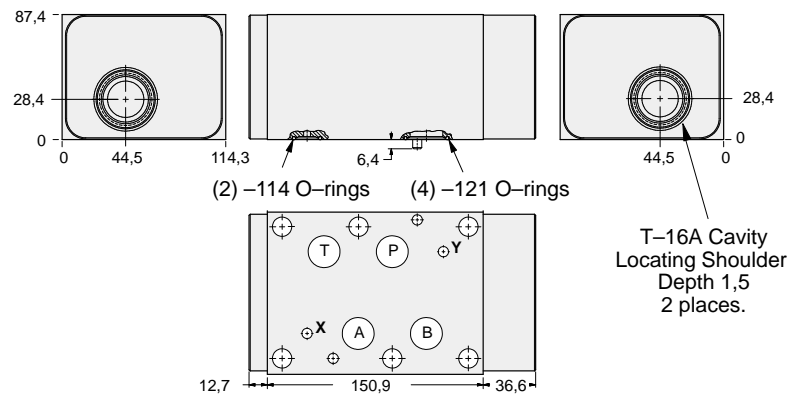
ISO 08 SANDWICH BODIES



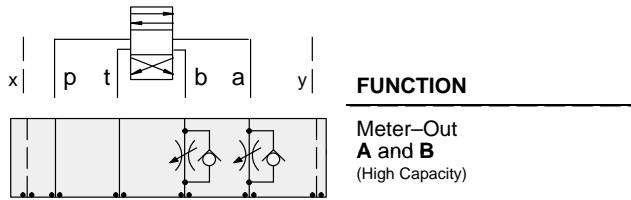
- Aluminium rated to 210 bar and SG Iron rated to 350 bar.
- See page viii for ordering cartridge/body and seals. Pressure ratings, material specifications on page xiv.



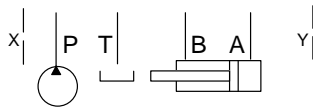
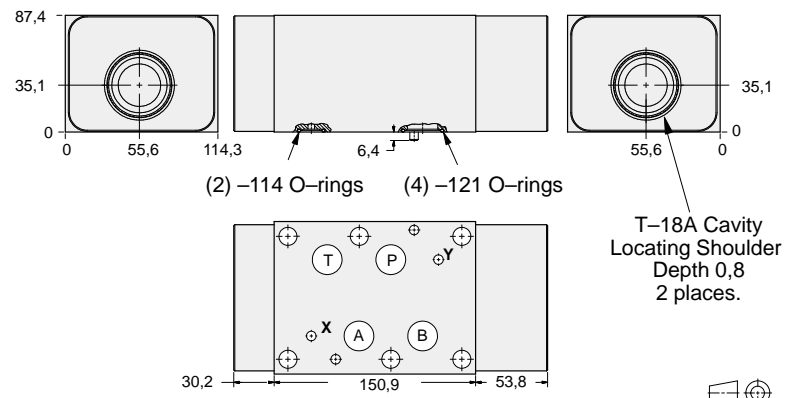
Flow Control Valves



| ALUMINIUM | | SG IRON | |
|------------|------------|------------|------------|
| Model Code | List Price | Model Code | List Price |
| IBW | | IBW/S | |



Flow Control Valves



| ALUMINIUM | | SG IRON | |
|------------|------------|-------------|------------|
| Model Code | List Price | Part Number | List Price |
| IBY | | IBY/S | |

TYPICAL CARTRIDGES USED WITH BODIES SHOWN ABOVE

| | | | |
|---------------|--|--|--|
| | Fully Adjustable Needle Valve | | Fixed Orifice, Pressure-Compensated Flow Control |
| | NF*C Page 5.13 | | FX*A Page 5.21 |
| | Fully Adjustable Needle Valve with Reverse Free Flow Check | | Fixed Orifice, Pressure-Compensated Flow Control with Reverse Free Flow Check |
| | NC*B Page 5.17 | | FC*B Page 5.23 |
| | Fully Adjustable Needle Valve with Reverse Free Flow Check, Low Flow | | Fully Adjustable, Pressure-Compensated Flow Control with Reverse Free Flow Check |
| | NC*C Page 5.19 | | FD*A Page 5.25 |
| OTHER VALVES: | CN*C | | |

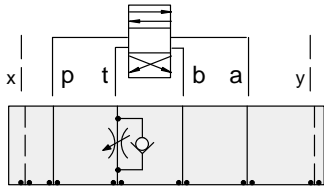
08 FLOW CONTROL



ISO 08 SANDWICH BODIES



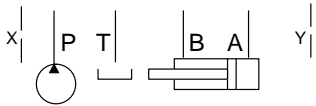
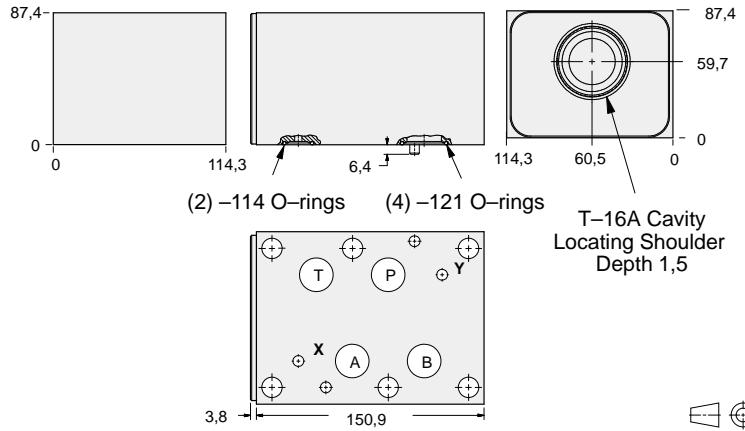
- Aluminium rated to 210 bar and SG Iron rated to 350 bar.
- See page viii for ordering cartridge/body and seals. Pressure ratings, material specifications on page xiv.



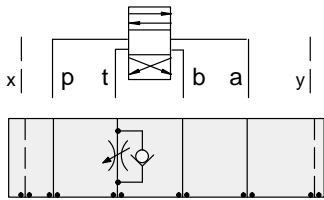
FUNCTION

Meter-Out T

Flow Control Valves



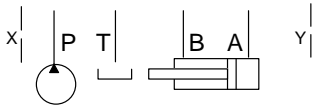
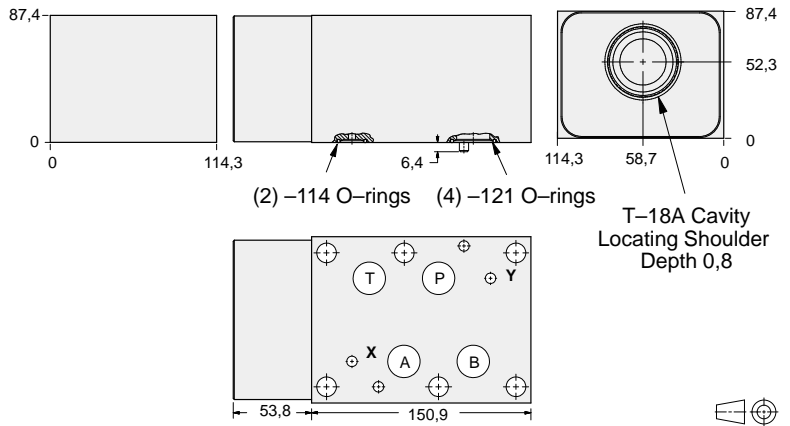
| ALUMINIUM | | SG IRON | |
|------------|------------|--------------|------------|
| Model Code | List Price | Model Code | List Price |
| IBT | | IBT/S | |



FUNCTION

Meter-Out T
(High Capacity)

Flow Control Valves



| ALUMINIUM | | SG IRON | |
|------------|------------|--------------|------------|
| Model Code | List Price | Part Number | List Price |
| IBV | | IBV/S | |

TYPICAL CARTRIDGES USED WITH BODIES SHOWN ABOVE

| | | | |
|---------------|--|--|--|
| | Fully Adjustable Needle Valve | | Fixed Orifice, Pressure-Compensated Flow Control |
| | NF*C Page 5.13 | | FX*A Page 5.21 |
| | Fully Adjustable Needle Valve with Reverse Free Flow Check | | Fixed Orifice, Pressure-Compensated Flow Control with Reverse Free Flow Check |
| | NC*B Page 5.17 | | FC*B Page 5.23 |
| | Fully Adjustable Needle Valve with Reverse Free Flow Check, Low Flow | | Fully Adjustable, Pressure-Compensated Flow Control with Reverse Free Flow Check |
| | NC*C Page 5.19 | | FD*A Page 5.25 |
| OTHER VALVES: | CN*C | | |