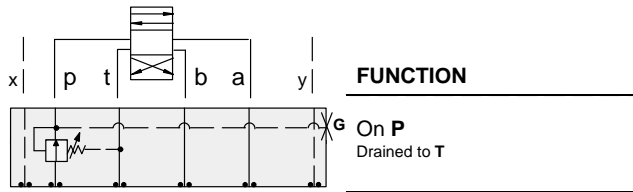




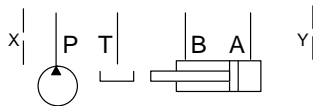
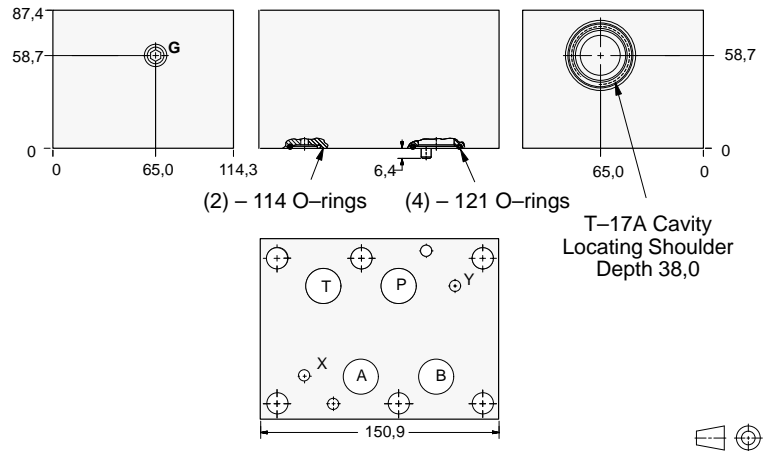
# ISO 08 SANDWICH BODIES



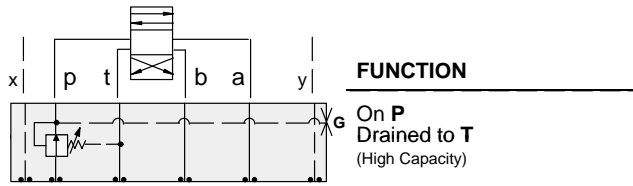
- Aluminium rated to 210 bar and SG Iron rated to 350 bar.
- See page viii for ordering cartridge/body and seals. Pressure ratings, material specifications on page xiv.



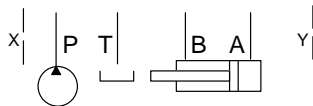
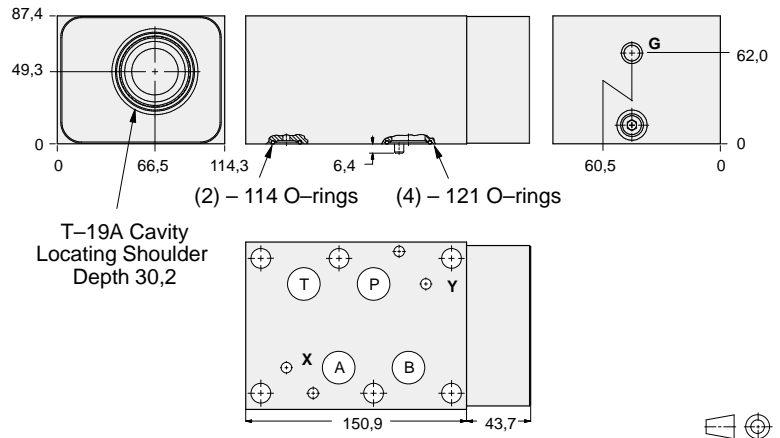
## Reducing Valves



Gauge Port (Plugged)	ALUMINIUM		SG IRON	
	Model Code	List Price	Model Code	List Price
.25 NPTF	<b>HBP</b>		<b>HBP/S</b>	
.25 BSPP	<b>HBP/M</b>		<b>HBP/T</b>	



## Reducing Valves



Gauge Port (Plugged)	ALUMINIUM		SG IRON	
	Model Code	List Price	Part Number	List Price
.25 NPTF	<b>HBO</b>		<b>HBO/S</b>	
.25 BSPP	<b>HBO/M</b>		<b>HBO/T</b>	

### TYPICAL CARTRIDGES USED WITH BODIES SHOWN ABOVE

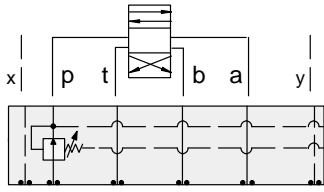
	Pilot Operated Reducing Valve		
	<b>PB*B Page 3.07</b>		
	Air Controlled, Pilot Operated Reducing Valve		
	<b>PB*C Page 3.09</b>		
<b>OTHER VALVES:</b>			



# ISO 08 SANDWICH BODIES



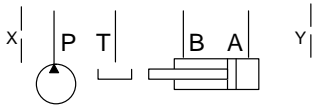
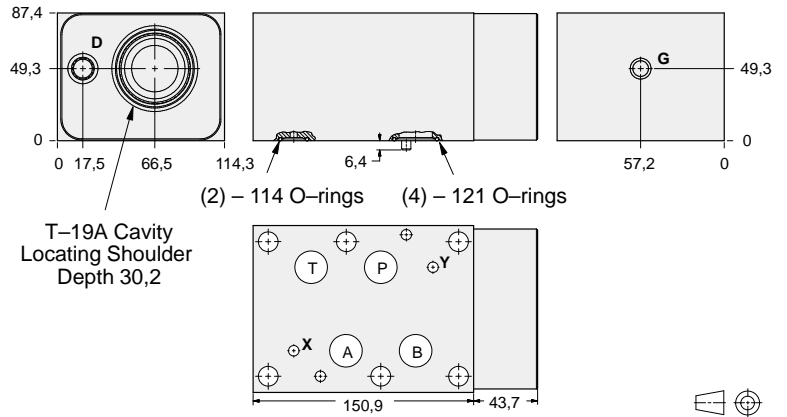
- Aluminium rated to 210 bar and SG Iron rated to 350 bar.
- See page viii for ordering cartridge/body and seals. Pressure ratings, material specifications on page xiv.



### FUNCTION

On P  
Drained Externally

### Reducing Valves



Drain Port	Gauge Port	ALUMINIUM		SG IRON	
		Model Code	List Price	Model Code	List Price
SAE-6	.25 NPTF	<b>HBQ</b>		<b>HBQ/S</b>	
.25 BSPP	.25 BSPP	<b>HBQ/M</b>		<b>HBQ/T</b>	

08 REDUCING

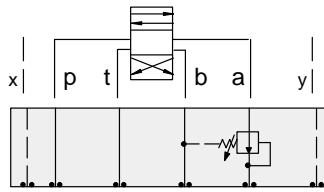
TYPICAL CARTRIDGES USED WITH BODIES SHOWN ABOVE			
	Pilot Operated Reducing Valve		
	<b>PBJB</b> Page 3.07		
	Air Controlled, Pilot Operated Reducing Valve		
	<b>PBJC</b> Page 3.09		
OTHER VALVES:			



# ISO 08 SANDWICH BODIES

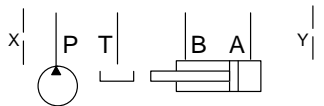
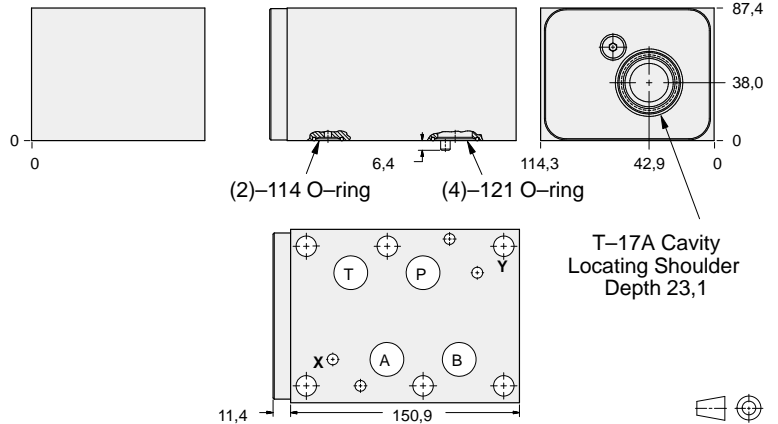


- Aluminium rated to 210 bar and SG Iron rated to 350 bar.
- See page viii for ordering cartridge/body and seals. Pressure ratings, material specifications on page xiv.

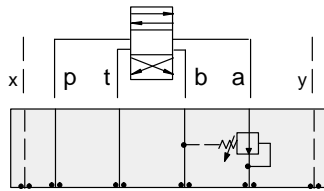


**FUNCTION**  
On A  
Drained to B

## Reducing Valves

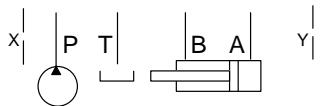
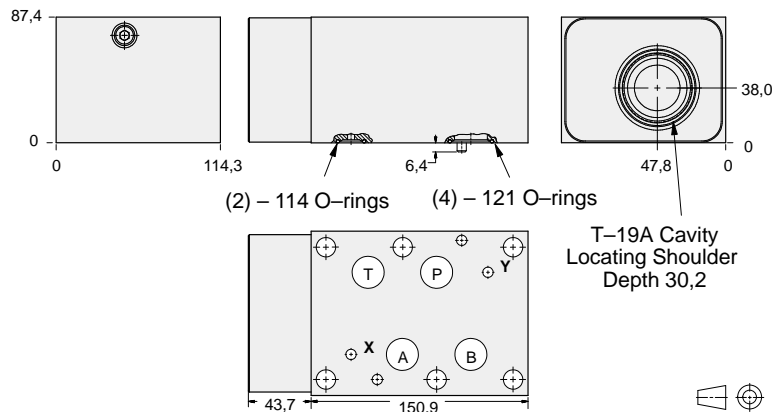


ALUMINIUM		SG IRON	
Model Code	List Price	Model Code	List Price
HBL		HBL/S	



**FUNCTION**  
On A  
Drained to B  
(High Capacity)

## Reducing Valves



ALUMINIUM		SG IRON	
Model Code	List Price	Part Number	List Price
HBA		HBA/S	

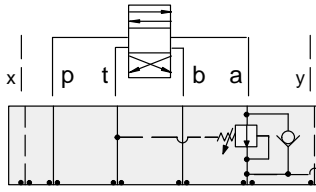
TYPICAL CARTRIDGES USED WITH BODIES SHOWN ABOVE			
	Pilot Operated Reducing Valve		
	PB*B Page 3.07		
OTHER VALVES:			



# ISO 08 SANDWICH BODIES



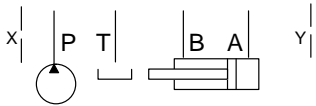
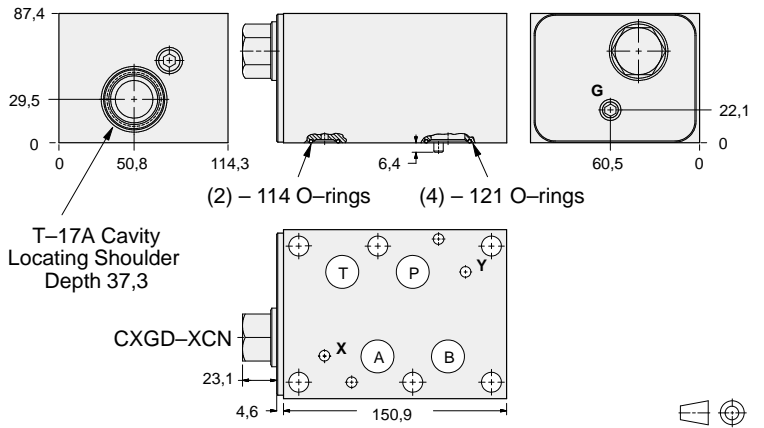
- Aluminium rated to 210 bar and SG Iron rated to 350 bar.
- See page viii for ordering cartridge/body and seals. Pressure ratings, material specifications on page xiv.



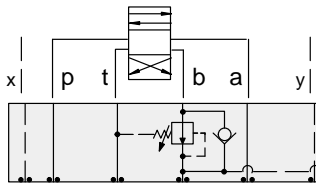
### FUNCTION

On A Drain to T  
Reverse FF Check

### Reducing Valves



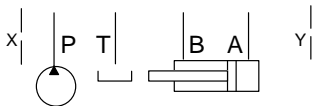
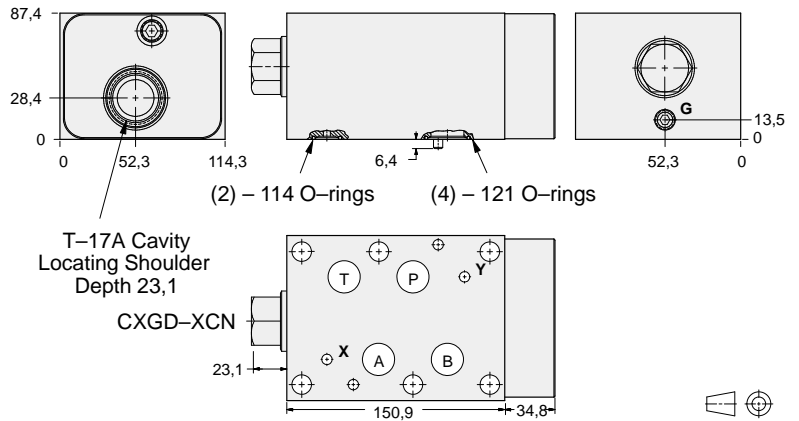
Gauge Port (Plugged)	ALUMINIUM		SG IRON	
	Model Code	List Price	Model Code	List Price
.25 NPTF	<b>HBK</b>		<b>HBK/S</b>	
.25 BSPP	<b>HBK/M</b>		<b>HBK/T</b>	



### FUNCTION

On B Drain to T  
Reverse FF Check

### Reducing Valves



Gauge Port (Plugged)	ALUMINIUM		SG IRON	
	Model Code	List Price	Part Number	List Price
.25 NPTF	<b>HBJ</b>		<b>HBJ/S</b>	
.25 BSPP	<b>HBJ/M</b>		<b>HBJ/T</b>	

### TYPICAL CARTRIDGES USED WITH BODIES SHOWN ABOVE

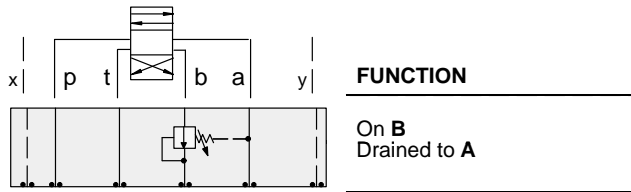
	Pilot Operated Reducing Valve		
	<b>PBHB</b> Page 3.07		
	Air Controlled, Pilot Operated Reducing Valve		
	<b>PBHC</b> Page 3.09		
<b>OTHER VALVES:</b>			



# ISO 08 SANDWICH BODIES



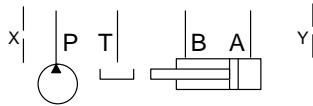
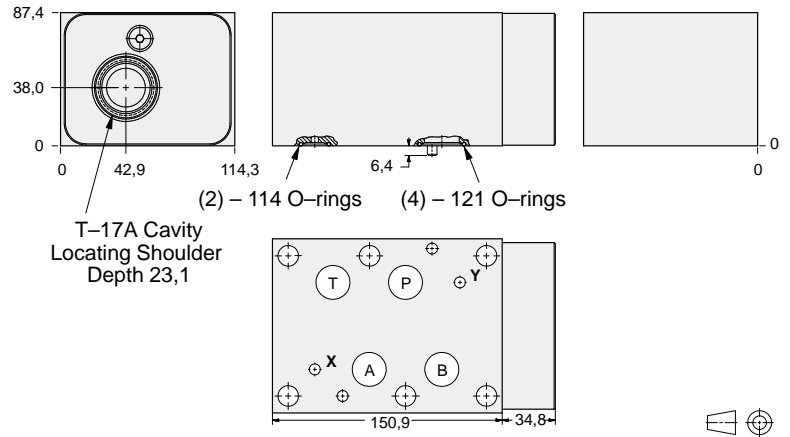
- Aluminium rated to 210 bar and SG Iron rated to 350 bar.
- See page viii for ordering cartridge/body and seals. Pressure ratings, material specifications on page xiv.



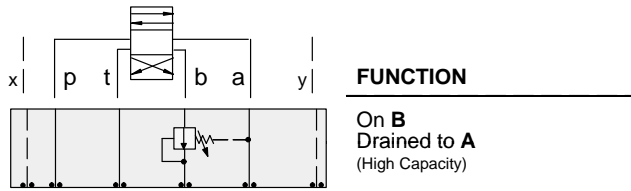
### FUNCTION

On **B**  
Drained to **A**

### Reducing Valves



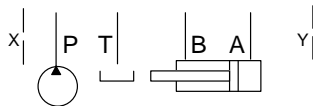
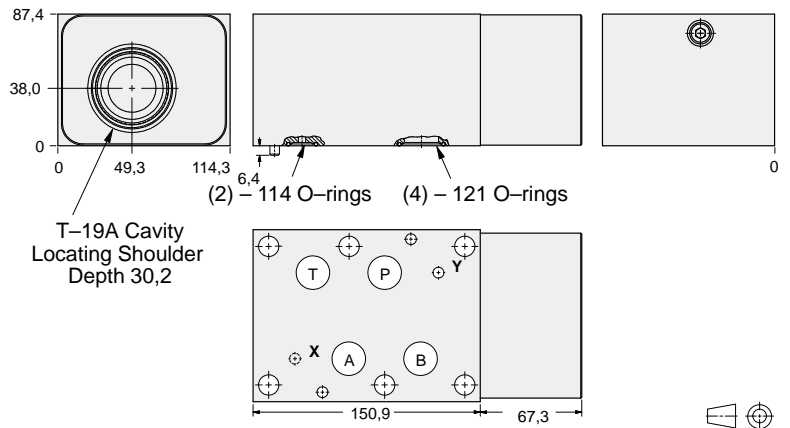
ALUMINIUM		SG IRON	
Model Code	List Price	Model Code	List Price
<b>HBM</b>		<b>HBM/S</b>	



### FUNCTION

On **B**  
Drained to **A**  
(High Capacity)

### Reducing Valves



ALUMINIUM		SG IRON	
Model Code	List Price	Part Number	List Price
<b>HBB</b>		<b>HBB/S</b>	

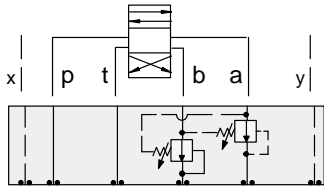
TYPICAL CARTRIDGES USED WITH BODIES SHOWN ABOVE			
	Pilot Operated Reducing Valve		
	PB*B Page 3.07		
OTHER VALVES:			



# ISO 08 SANDWICH BODIES



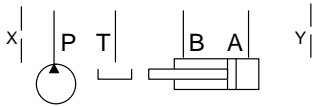
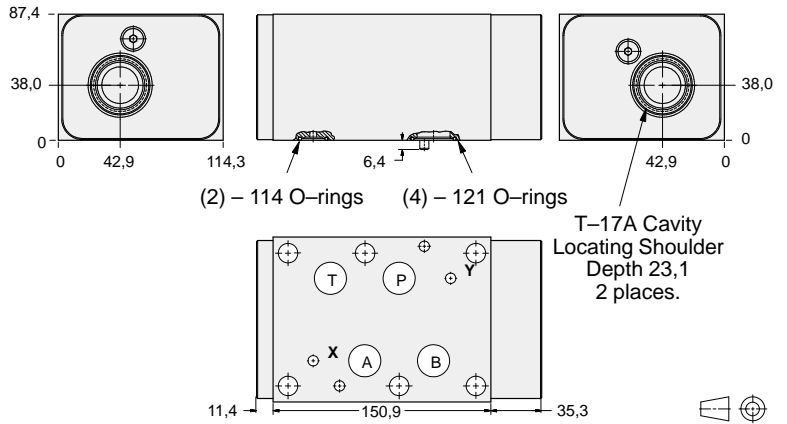
- Aluminium rated to 210 bar and SG Iron rated to 350 bar.
- See page viii for ordering cartridge/body and seals. Pressure ratings, material specifications on page xiv.



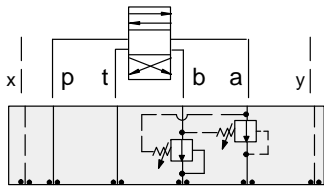
### FUNCTION

On **A** and **B**  
Drains to Opposite Port

### Reducing Valves



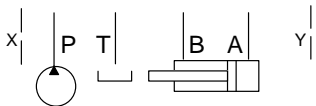
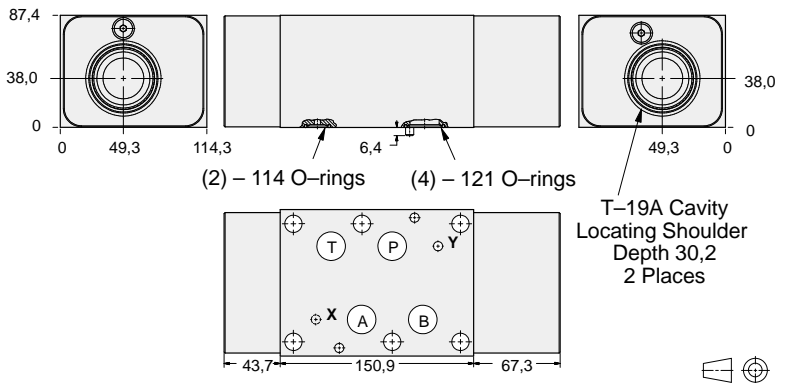
ALUMINIUM		SG IRON	
Model Code	List Price	Model Code	List Price
<b>HBN</b>		<b>HBNS</b>	



### FUNCTION

On **A** and **B**  
Drains to Opposite Port  
(High Capacity)

### Reducing Valves



ALUMINIUM		SG IRON	
Model Code	List Price	Part Number	List Price
<b>HBX</b>		<b>HBXS</b>	

### TYPICAL CARTRIDGES USED WITH BODIES SHOWN ABOVE

	Pilot Operated Reducing Valve		
	PB*B Page 3.07		
OTHER VALVES:			