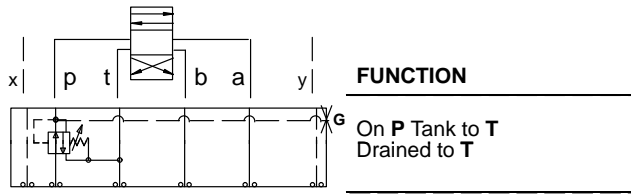




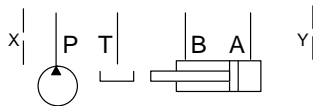
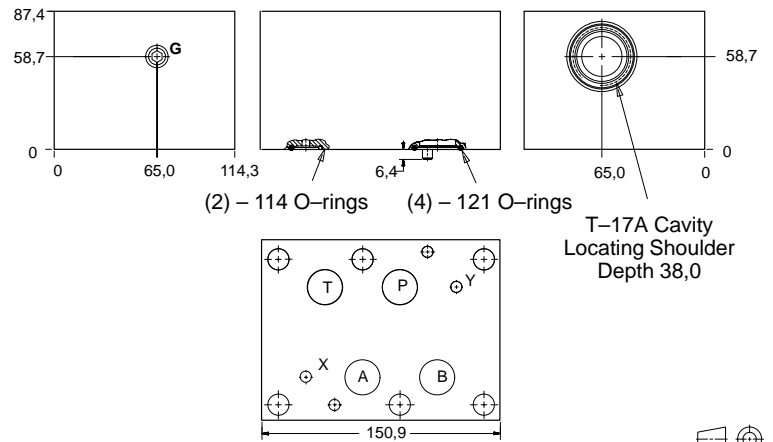
ISO 08 SANDWICH BODIES



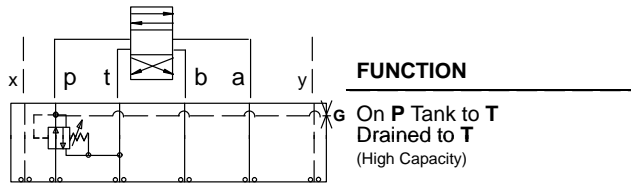
- Aluminium rated to 210 bar and SG Iron rated to 350 bar.
- See page viii for ordering cartridge/body and seals. Pressure ratings, material specifications on page xiv.



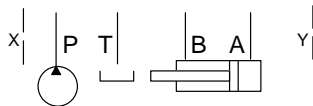
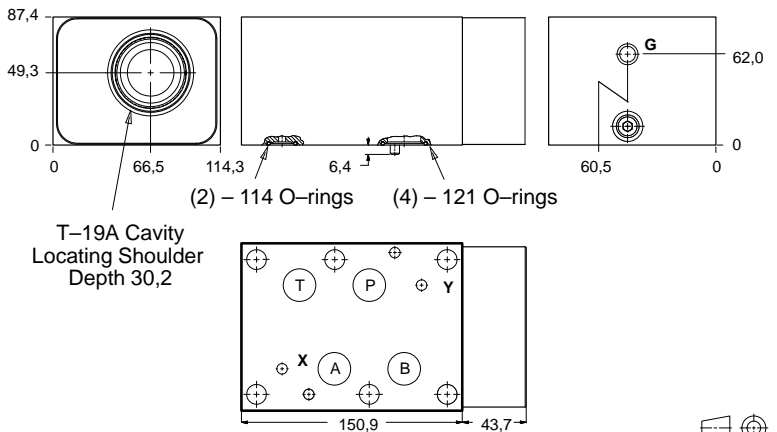
Reducing/Relieving Valves



Gauge Port (Plugged)	ALUMINIUM		SG IRON	
	Model Code	List Price	Model Code	List Price
.25 NPTF	HBP		HBP/S	
.25 BSPP	HBP/M		HBP/T	



Reducing/Relieving Valves



Gauge Port (Plugged)	ALUMINIUM		SG IRON	
	Model Code	List Price	Part Number	List Price
.25 NPTF	HBO		HBO/S	
.25 BSPP	HBO/M		HBO/T	

TYPICAL CARTRIDGES USED WITH BODIES SHOWN ABOVE			
	<i>Pilot Operated Reducing/Relieving Valve</i>		
	PP*B Page 3.11		
	<i>Air Controlled, Pilot Operated Reducing/Relieving Valve</i>		
	PP*C Page 3.13		
OTHER VALVES:			

08 REDUCING/RELIEVING

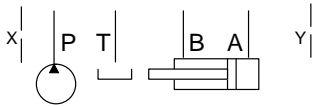
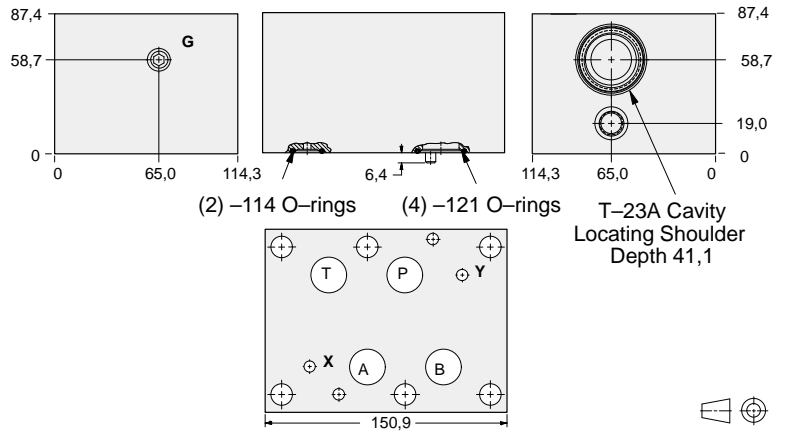
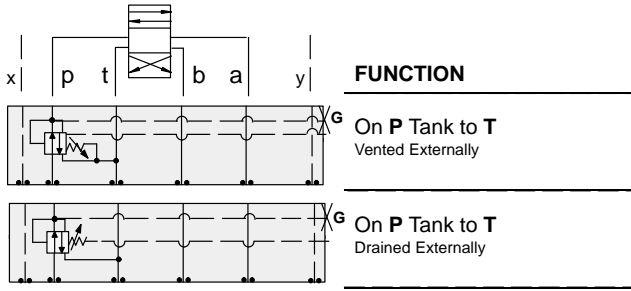


ISO 08 SANDWICH BODIES



- Aluminium rated to 210 bar and SG Iron rated to 350 bar.
- See page viii for ordering cartridge/body and seals. Pressure ratings, material specifications on page xiv.

Reducing/Relieving Valves



External Port	Gauge Port (Plugged)	ALUMINIUM		SG IRON	
		Model Code	List Price	Model Code	List Price
SAE-6	.25 NPTF	PBP		PBP/S	
.25 BSPP	.25 BSPP			PBP/M	

08 REDUCING/RELIEVING

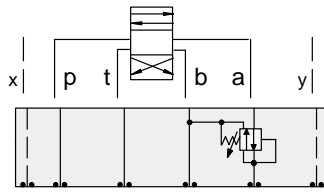
TYPICAL CARTRIDGES USED WITH BODIES SHOWN ABOVE			
	Pilot Operated Reducing/Relieving Valve with Drain Port		
	PVHA Page 3.15		
	Pilot Operated Reducing/Relieving Valve with Vent Port		
	PVHB Page 3.17		
OTHER VALVES:			



ISO 08 SANDWICH BODIES



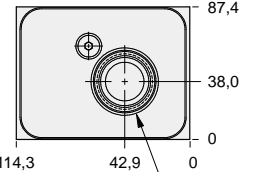
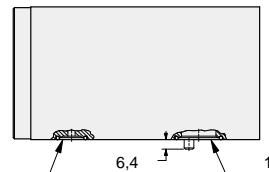
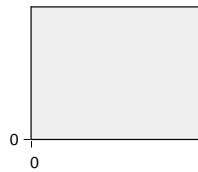
- Aluminium rated to 210 bar and SG Iron rated to 350 bar.
- See page viii for ordering cartridge/body and seals. Pressure ratings, material specifications on page xiv.



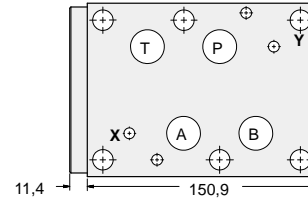
FUNCTION

On **A** Tank to **B**
Drained to **B**

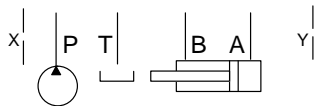
Reducing/Relieving Valves



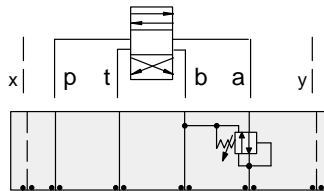
(2)-114 O-ring (4)-121 O-ring



T-17A Cavity
Locating Shoulder
Depth 23,1



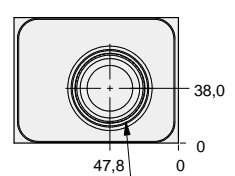
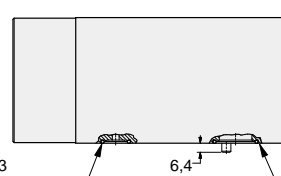
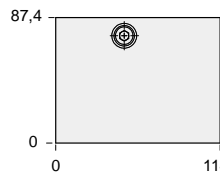
ALUMINIUM		SG IRON	
Model Code	List Price	Model Code	List Price
HBL		HBL/S	



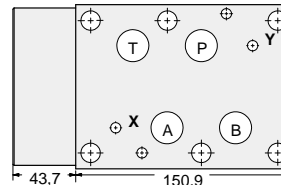
FUNCTION

On **A** Tank to **B**
Drained to **B**
(High Capacity)

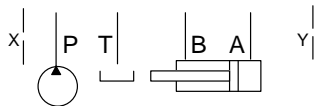
Reducing/Relieving Valves



(2) - 114 O-rings (4) - 121 O-rings



T-19A Cavity
Locating Shoulder
Depth 30,2



ALUMINIUM		SG IRON	
Model Code	List Price	Part Number	List Price
HBA		HBA/S	

TYPICAL CARTRIDGES USED WITH BODIES SHOWN ABOVE

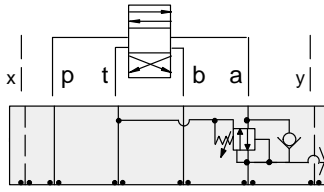
	Pilot Operated Reducing/Relieving Valve		
	PP*B Page 3.11		
OTHER VALVES:			



ISO 08 SANDWICH BODIES



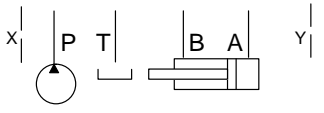
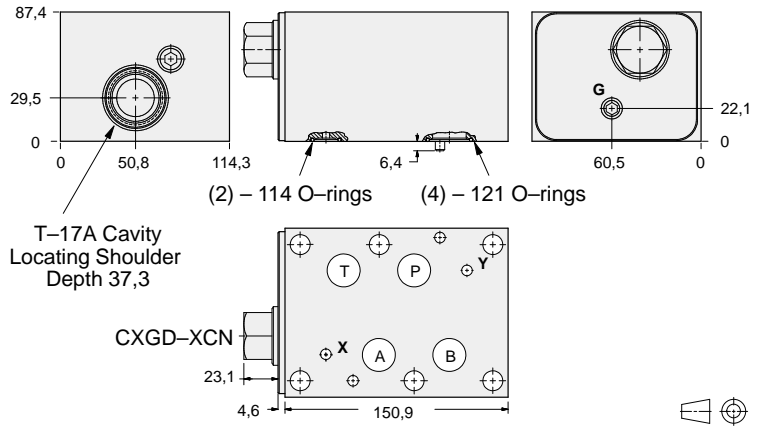
- Aluminium rated to 210 bar and SG Iron rated to 350 bar.
- See page viii for ordering cartridge/body and seals. Pressure ratings, material specifications on page xiv.



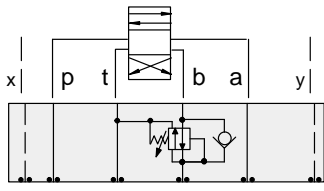
FUNCTION

On A Tank to T
Drained to T
Reverse FF Check

Reducing/Relieving Valves



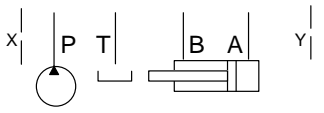
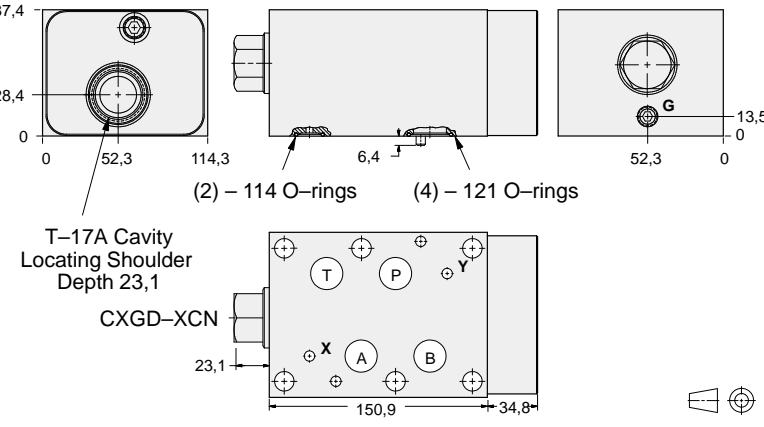
Gauge Port (Plugged)	ALUMINIUM		SG IRON	
	Model Code	List Price	Model Code	List Price
.25 NPTF	HBK		HBK/S	
.25 BSPP	HBK/M		HBK/T	



FUNCTION

On B Tank to T
Drained to T
Reverse FF Check

Reducing/Relieving Valves



Gauge Port (Plugged)	ALUMINIUM		SG IRON	
	Model Code	List Price	Part Number	List Price
.25 NPTF	HBJ		HBJ/S	
.25 BSPP	HBJ/M		HBJ/T	

08 REDUCING/RELIEVING

TYPICAL CARTRIDGES USED WITH BODIES SHOWN ABOVE

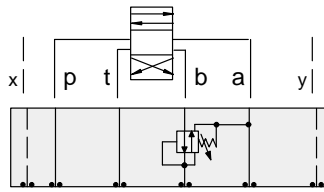
	Pilot Operated Reducing/Relieving Valve		
	PPHB Page 3.11		
	Air Controlled, Pilot Operated Reducing/Relieving Valve		
	PPHC Page 3.13		
OTHER VALVES:			



ISO 08 SANDWICH BODIES



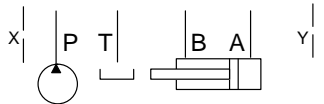
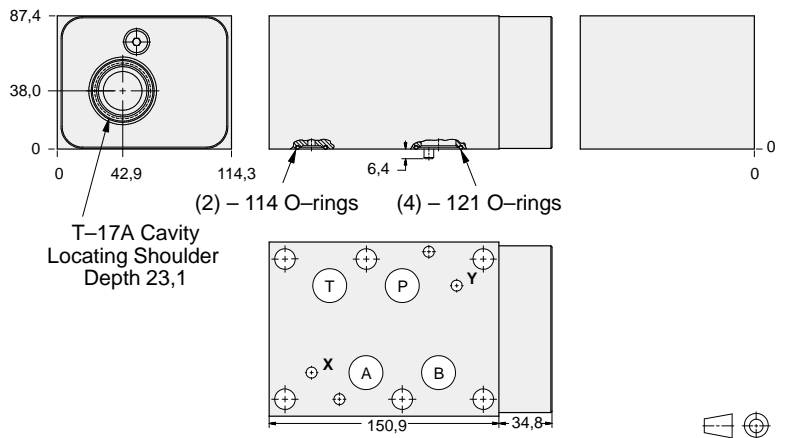
- Aluminium rated to 210 bar and SG Iron rated to 350 bar.
- See page viii for ordering cartridge/body and seals. Pressure ratings, material specifications on page xiv.



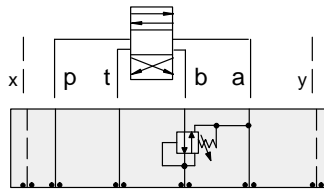
FUNCTION

On **B** Tank to **A**
Drained to **A**

Reducing/Relieving Valves



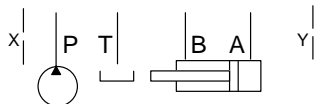
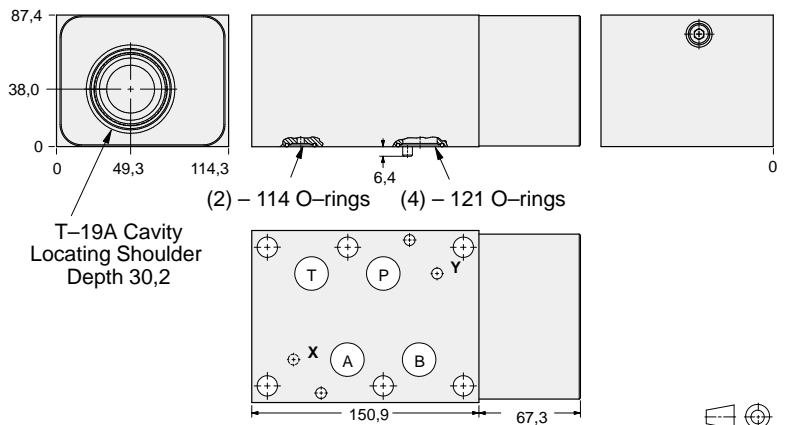
ALUMINIUM		SG IRON	
Model Code	List Price	Model Code	List Price
HBM		HBM/S	



FUNCTION

On **B** Tank to **A**
Drained to **A**
(High Capacity)

Reducing/Relieving Valves



ALUMINIUM		SG IRON	
Model Code	List Price	Part Number	List Price
HBB		HBB/S	

TYPICAL CARTRIDGES USED WITH BODIES SHOWN ABOVE			
	<i>Pilot Operated Reducing/Relieving Valve</i>		
	PP*B Page 3.11		
OTHER VALVES:			

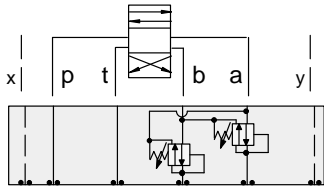
08 REDUCING/RELIEVING



ISO 08 SANDWICH BODIES



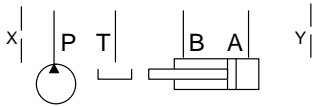
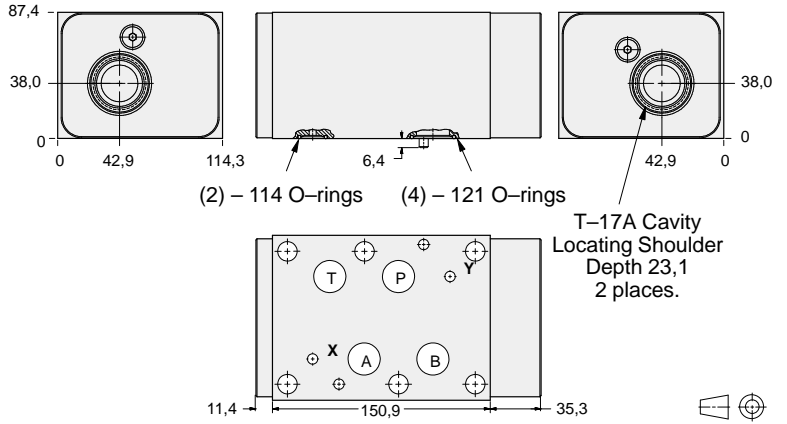
- Aluminium rated to 210 bar and SG Iron rated to 350 bar.
- See page viii for ordering cartridge/body and seals. Pressure ratings, material specifications on page xiv.



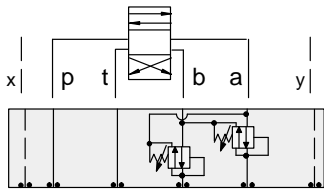
FUNCTION

On **A** and **B**
Tanks and Drains to
Opposite Port

Reducing/Relieving Valves



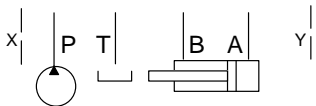
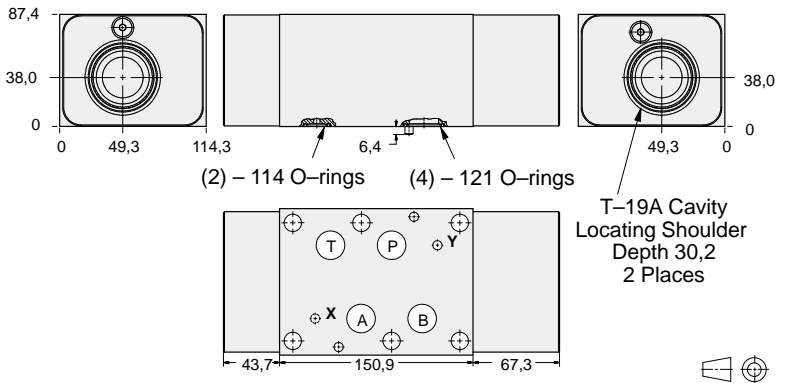
ALUMINIUM		SG IRON	
Model Code	List Price	Model Code	List Price
HBN		HBNS	



FUNCTION

On **A** and **B**
Tanks and Drains to
Opposite Port
(High Capacity)

Reducing/Relieving Valves



ALUMINIUM		SG IRON	
Model Code	List Price	Part Number	List Price
HBV		HBV/S	

08 REDUCING/RELIEVING

TYPICAL CARTRIDGES USED WITH BODIES SHOWN ABOVE			
	Pilot Operated Reducing/Relieving Valve		
	PP*B Page 3.11		
OTHER VALVES:			