

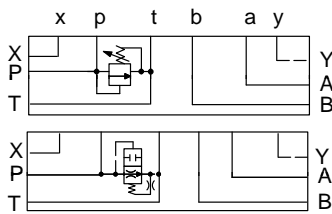


# ISO 08 SANDWICH BODIES



- Aluminium rated to 210 bar and SG Iron rated to 350 bar.
- See page viii for ordering cartridge/body and seals. Pressure ratings, material specifications on page xiv.

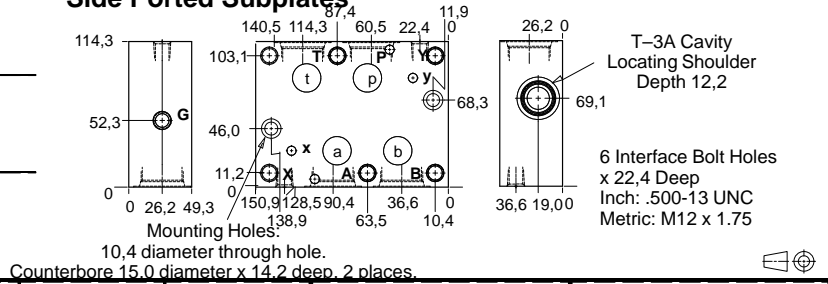
## Side Ported Subplates



### FUNCTION

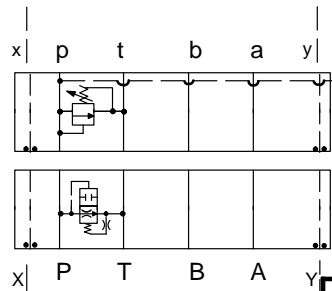
Relief P to T

Air-Bleed and Start-Up



Interface Bolt Holes	Port P,T,A,B	Port X,Y	Gauge Port	ALUMINIUM		SG IRON	
				Model Code	List Price	Model Code	List Price
Inch	1.00 NPTF	.25 NPTF	.25 NPTF	CSE		CSE/S	
Inch	SAE-16	SAE-6	.25 NPTF	CSM		CSM/S	
Metric	1.00 BSPP	.25 BSPP	.25 BSPP	CSX		CSX/S	

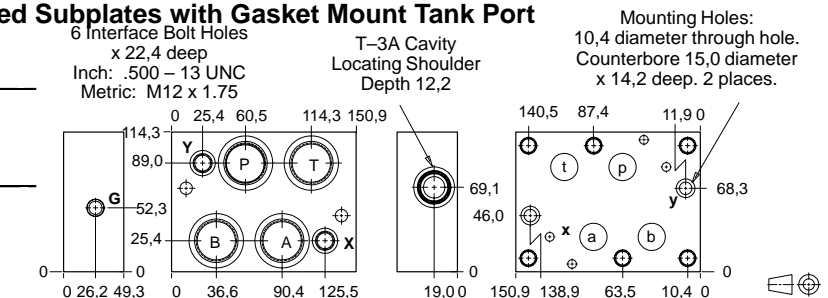
## Side Ported Subplates with Gasket Mount Tank Port



### FUNCTION

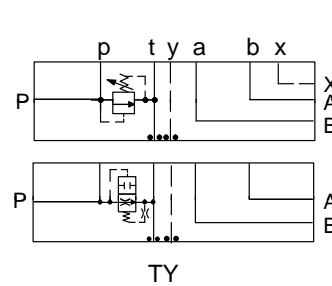
Relief P to T

Air-Bleed and Start-Up



Interface Bolt Holes	Port P,T,A,B	Port X,Y	Gauge Port	ALUMINIUM		SG IRON	
				Model Code	List Price	Model Code	List Price
Inch	1.00 NPTF	.25 NPTF	.25 NPTF	CRE		CRE/S	
Inch	SAE-16	SAE-6	.25 NPTF	CRM		CRM/S	
Metric	1.00 BSPP	25 BSPP	.25 BSPP	CRX		CRX/S	

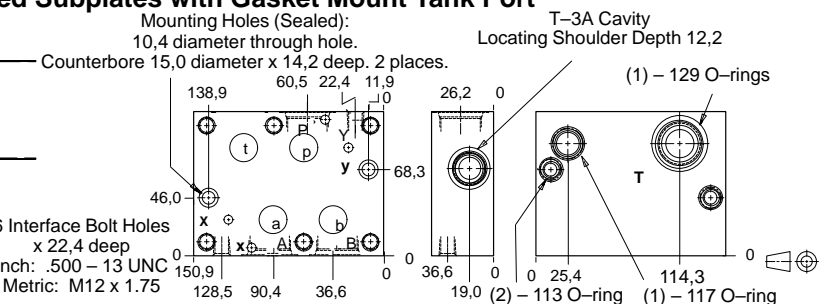
## Side Ported Subplates with Gasket Mount Tank Port



### FUNCTION

Relief P to T

Air-Bleed and Start-Up



Interface Bolt Holes	Ports A, B, P	Port T	Port X, Y	Gauge Port	ALUMINIUM		SG IRON	
					Model Code	List Price	Model Code	List Price
Inch	1.00 NPTF	1.00 NPTF	.25 NPTF	.25 NPTF	CTE		CTE/S	
Inch	SAE-16	1.00 NPTF	SAE-6	.25 NPTF	CTM		CTM/S	
Metric	1.00 BSPP	1.00 BSPP	.25B SPP	.25 BSPP	CTS		CTS/S	

### TYPICAL CARTRIDGES USED WITH BODIES SHOWN ABOVE

	Pilot Operated Relief Valve		Direct Acting Relief Valve
	RPGC Page 1.06		RDFA Page 1.10
	Pilot Operated, Rapid Response Relief Valve		Air Bleed and Start-up Valve
	RPGE Page 1.08		NQEB Page 10.16
OTHER VALVES:			

08 SUBPLATE

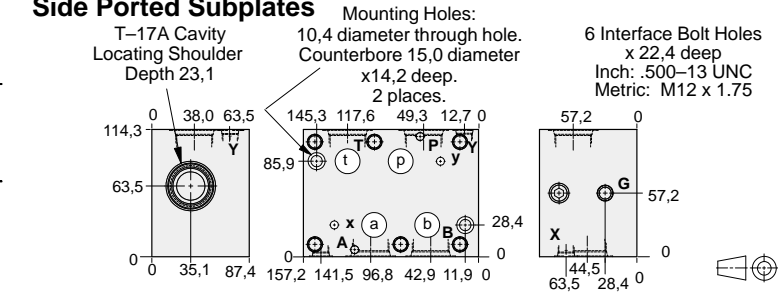
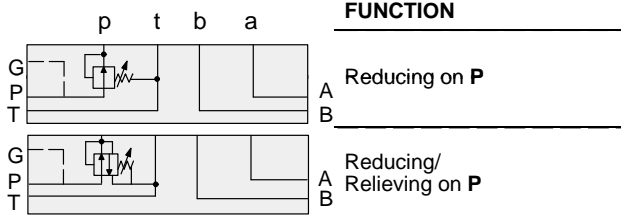


# ISO 08 SANDWICH BODIES



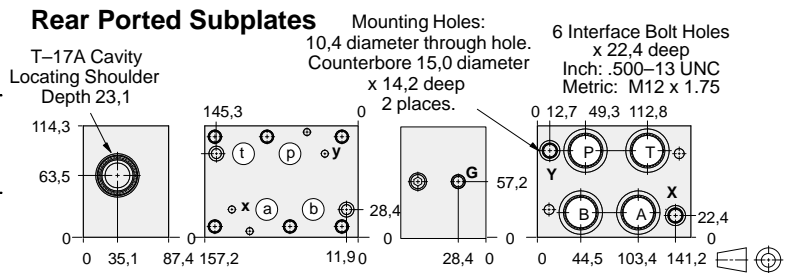
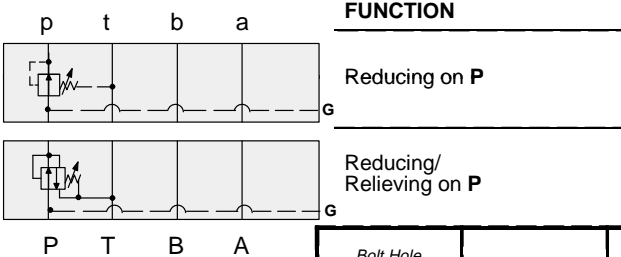
- Aluminium rated to 210 bar and SG Iron rated to 350 bar.
- See page viii for ordering cartridge/body and seals. Pressure ratings, material specifications on page xiv.

## Side Ported Subplates



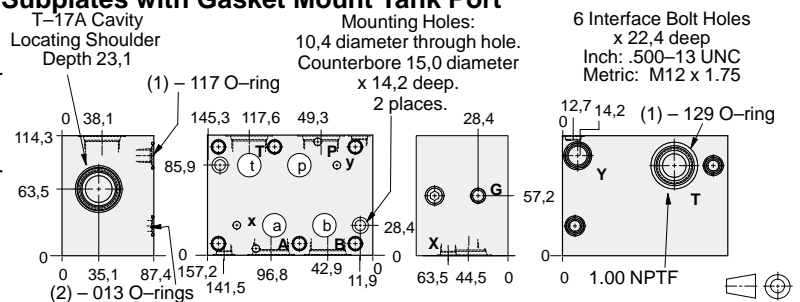
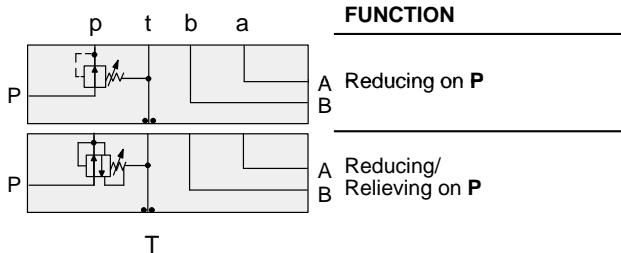
Bolt Hole Interface	Gauge Port	Ports A,B,P,T	Ports X,Y	ALUMINIUM		SG IRON	
				Model Code	List Price	Model Code	List Price
Inch	.25 NPTF	1.00 NPTF	.25 NPTF	HSE		HSE/S	
Inch	.25 NPTF	SAE-16	SAE-6	HSM		HSM/S	
Metric	.25 BSPP	1.00 BSPP	.25 BSPP	HSX		HSX/S	

## Rear Ported Subplates



Bolt Hole Interface	Gauge Port	Ports A,B,P,T	Ports X,Y	ALUMINIUM		SG IRON	
				Model Code	List Price	Model Code	List Price
Inch	.25 NPTF	1.00 NPTF	.25 NPTF	HRE		HRM/S	
Inch	.25 NPTF	SAE-16	SAE-6	HRM		HRM/S	
Metric	.25 BSPP	1.00 BSPP	.25 BSPP	HRX		HRX/S	

## Side Ported Subplates with Gasket Mount Tank Port



Bolt Hole Interface	Gauge Port	Ports A,B,P	Ports X, Y	ALUMINIUM		SG IRON	
				Model Code	List Price	Model Code	List Price
Inch	.25 NPTF	1.00 NPTF	.25 NPTF	HTE		HTE/S	
Inch	.25 NPTF	SAE-16	SAE-6	HTM		HTM/S	
Metric	.25 BSPP	1.00 BSPP	.25 BSPP	HTX		HTX/S	

### TYPICAL CARTRIDGES USED WITH BODIES SHOWN ABOVE

	Pilot Operated Reducing Valve		Pilot Operated Reducing/Relieving Valve
	PBHB Page 3.07		PPHB Page 3.11
	Air Controlled, Pilot Operated Reducing Valve		Air Controlled, Pilot Operated Reducing/Relieving Valve
	PBHC Page 3.09		PPHC Page 3.13