

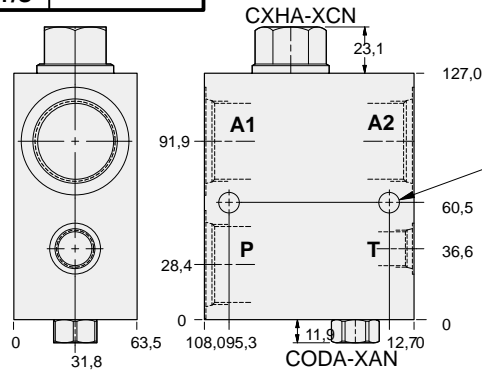
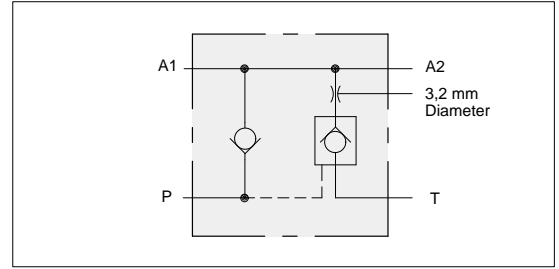


ACCUMULATOR DUMP ASSEMBLY



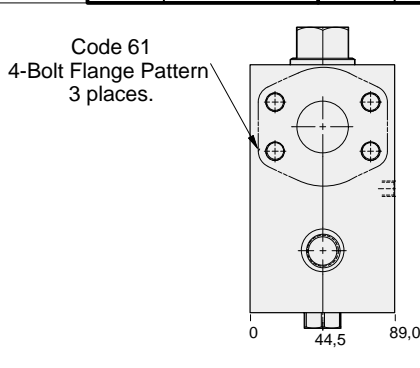
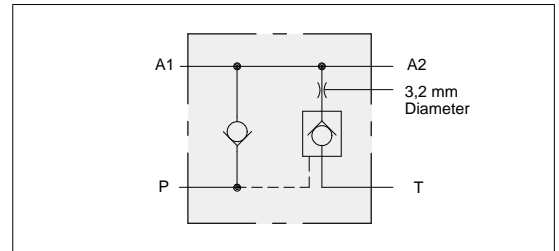
- Aluminium rated to 210 bar and SG Iron rated to 350 bar.

Ports P, A1 & A2	Port T	ALUMINIUM		SG IRON	
		Port Code	List Price	Port Code	List Price
.75 NPTF	.50 NPTF	D		D/S	
1.00 NPTF	.50 NPTF	E		E/S	
1.25 NPTF	.50 NPTF	F		F/S	
SAE-12	SAE-8	L		L/S	
SAE-16	SAE-8	M		M/S	
SAE-20	SAE-8	N		N/S	
.75 BSPP	.50 BSPP	W		W/S	
1.00 BSPP	.50 BSPP	X		X/S	
1.25 BSPP	.50 BSPP	Y		Y/S	



Mounting Holes:
10,7 diameter through hole.
2 places.

Mounting Hole Dimensions	Ports A1, A2, P Code 61	Port T	ALUMINIUM		SG IRON	
			Port Code	List Price	Port Code	List Price
Inch	1.00"	SAE-8	P		P/S	
Metric	1.00"	.50 BSPP	P/M		P/T	
Inch	1.25"	SAE-8	Q		Q/S	
Metric	1.25"	.50 BSPP	Q/M		Q/T	



Code 61
4-Bolt Flange Pattern
3 places.

Mounting Holes:
(opposite sides)
Inch: .375-16 UNC-2B
x 15,7 deep
Metric: M10 X 1.50-6H
x 15,7 deep
2 places.

OPTIONS

YCHE - XAN - A*

PORTS
See Chart above

For Viton Seals Change XAN to XAV.

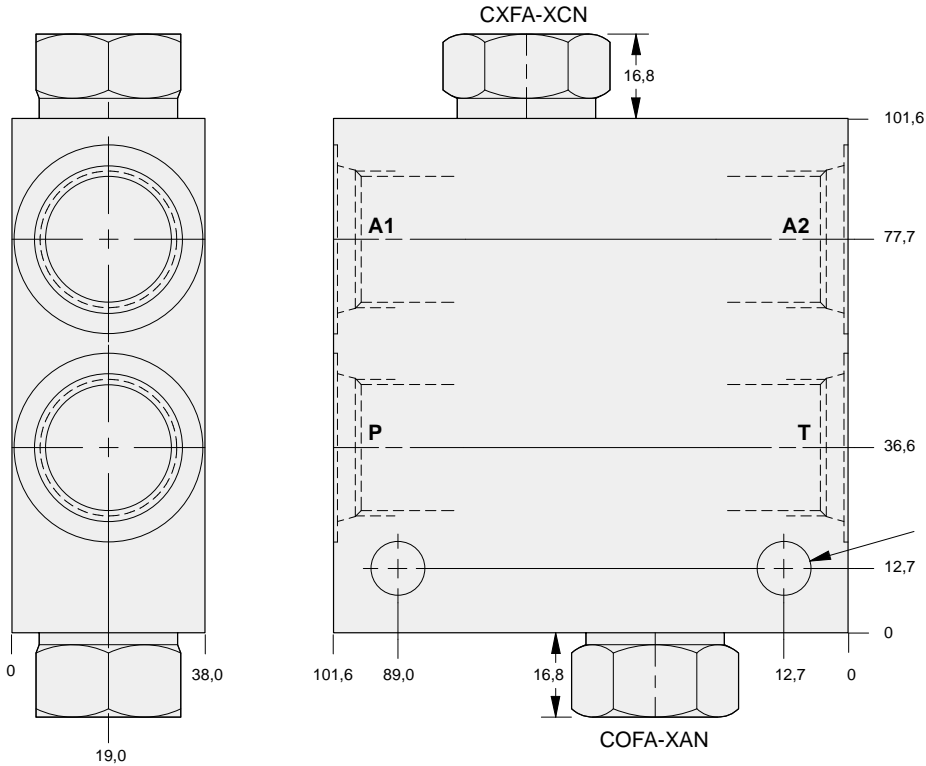
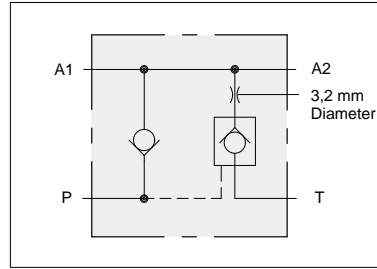


ACCUMULATOR DUMP ASSEMBLY



- Aluminium rated to 210 bar and SG Iron rated to 350 bar.

Ports P, T A1 & A2	ALUMINIUM		SG IRON	
	Port Code	List Price	Port Code	List Price
.25 NPTF	A		A/S	
.375 NPTF	B		B/S	
.50 NPTF	C		C/S	
.75 NPTF	D		D/S	
SAE-6	I		I/S	
SAE-8	J		J/S	
SAE-10	K		K/S	
SAE-12	L		L/S	
.25 BSPP	T		T/S	
.375 BSPP	U		U/S	
.50 BSPP	V		V/S	
.75 BSPP	W		W/S	



OPTIONS

YCFE - XAN - A*

For Viton Seals Change
XAN to XAV.

PORTS
See Chart
above