



CROSS-PORT RELIEF ASSEMBLY WITH SHUTTLE AND SOLENOID OPERATED VENT

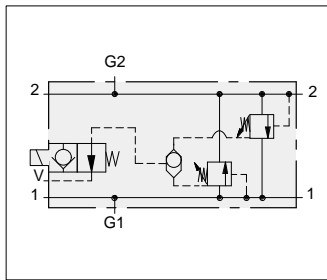


- Maximum operating pressure 210 bar.
- Power requirement: 12 watts.

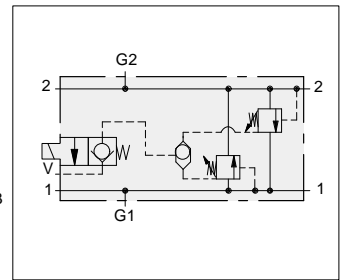
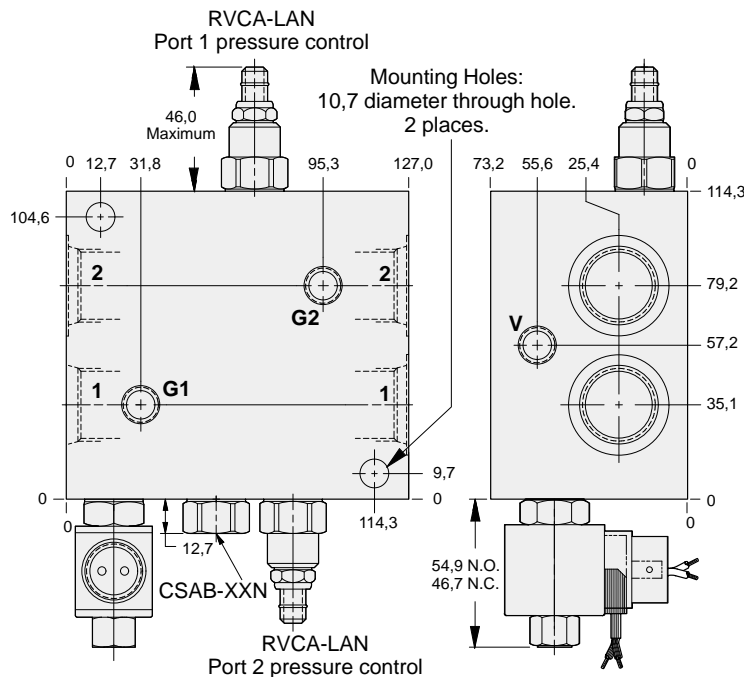
YVCG: Normally Open

YVCH: Normally Closed

ALUMINIUM		SG IRON		Ports 1 & 2	Port V	Ports G1 & G2	ALUMINIUM		SG IRON	
Port Code	List Price	Port Code	List Price				Port Code	List Price	Port Code	List Price
A		A/S		.25 NPTF	.25 NPTF	.25 NPTF	A		A/S	
B		B/S		.375 NPTF	.25 NPTF	.25 NPTF	B		B/S	
C		C/S		.50 NPTF	.25 NPTF	.25 NPTF	C		C/S	
D		D/S		.75 NPTF	.25 NPTF	.25 NPTF	D		D/S	
I		I/S		SAE-6	SAE-6	.25 NPTF	I		I/S	
J		J/S		SAE-8	SAE-6	.25 NPTF	J		J/S	
K		K/S		SAE-10	SAE-6	.25 NPTF	K		K/S	
L		L/S		SAE-12	SAE-6	.25 NPTF	L		L/S	
T		T/S		.25 BSPP	.25 BSPP	.25 BSPP	T		T/S	
U		U/S		.375 BSPP	.25 BSPP	.25 BSPP	U		U/S	
V		V/S		.50 BSPP	.25 BSPP	.25 BSPP	V		V/S	
W		W/S		.75 BSPP	.25 BSPP	.25 BSPP	W		W/S	



Normally Open
Solenoid Valve



Normally Closed
Solenoid Valve

OPTIONS		YVC * - LAN		**		PORTS	
		CARTRIDGE		SOLENOID COILS			
G	Normally Open	RVCA	Pg 1.18	J	12 volt DC, 0,6 metre leads	T	24 volt DC, ISO/DIN
H	Normally Closed	For Viton Seals Change LAN to LAV. Customer Specified Setting Stamped on Hex		K	24 volt DC, 0,6 metre leads	V	230 volt, 50/60 Hz, ISO/DIN
				N	115 volt, 50/60 Hz, conduit	W	120 volt, 50/60 Hz, ISO/DIN
				O	230 volt, 50/60 Hz, conduit		
				S	12 volt DC, ISO/DIN		
							See Chart above



CROSS-PORT RELIEF ASSEMBLY WITH SHUTTLE AND SOLENOID OPERATED VENT

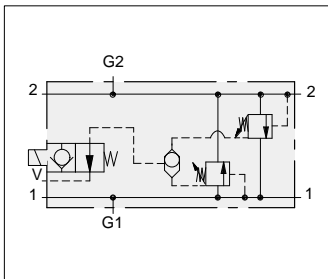


- Maximum operating pressure 210 bar.
- Power requirement: 12 watts.

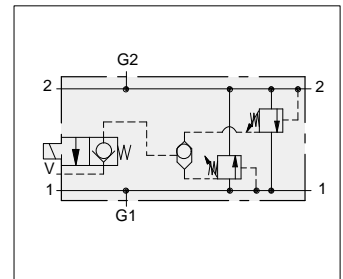
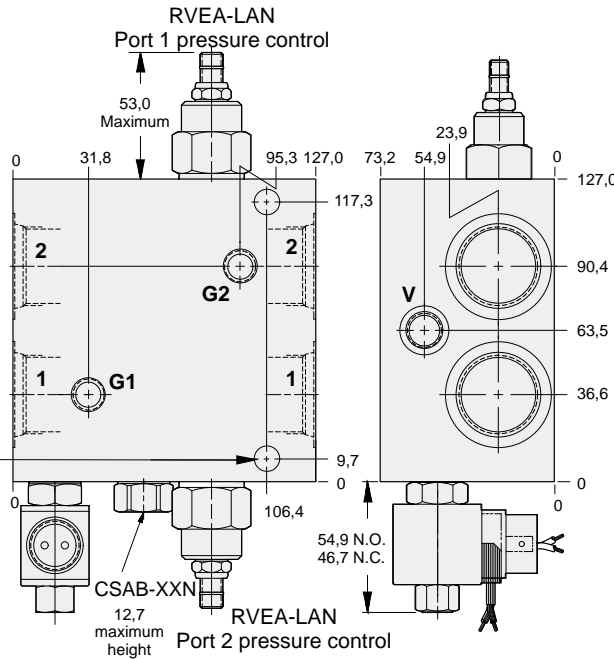
YVEG: Normally Open

YVEH: Normally Closed

ALUMINIUM		SG IRON		Ports 1 & 2	Port V	Ports G1 & G2	ALUMINIUM		SG IRON	
Port Code	List Price	Port Code	List Price				Port Code	List Price	Port Code	List Price
B		B/S		.375 NPTF	.25 NPTF	.25 NPTF	B		B/S	
C		C/S		.50 NPTF	.25 NPTF	.25 NPTF	C		C/S	
D		D/S		.75 NPTF	.25 NPTF	.25 NPTF	D		D/S	
E		E/S		1.00 NPTF	.25 NPTF	.25 NPTF	E		E/S	
I		I/S		SAE-6	SAE-6	.25 NPTF	I		I/S	
J		J/S		SAE-8	SAE-6	.25 NPTF	J		J/S	
K		K/S		SAE-10	SAE-6	.25 NPTF	K		K/S	
L		L/S		SAE-12	SAE-6	.25 NPTF	L		L/S	
M		M/S		SAE-16	SAE-6	.25 NPTF	M		M/S	
U		U/S		.375 BSPP	.25 BSPP	.25 BSPP	U		U/S	
V		V/S		.50 BSPP	.25 BSPP	.25 BSPP	V		V/S	
W		W/S		.75 BSPP	.25 BSPP	.25 BSPP	W		W/S	
X		X/S		1.00 BSPP	.25 BSPP	.25 BSPP	X		X/S	



**Normally Open
Solenoid Valve**



**Normally Closed
Solenoid Valve**

OPTIONS

YVE * - LAN **

CARTRIDGE		SOLENOID COILS		PORTS
G Normally Open	RVEA Pg 1.18	J 12 volt DC, 0,6 metre leads	T 24 volt DC, ISO/DIN	See Chart above
H Normally Closed	For Viton Seals Change LAN to LAV. Customer Specified Setting Stamped on Hex	K 24 volt DC, 0,6 metre leads	V 230 volt, 50/60 Hz, ISO/DIN	
		N 115 volt, 50/60 Hz, conduit	W 120 volt, 50/60 Hz, ISO/DIN	
		O 230 volt, 50/60 Hz, conduit		
		S 12 volt DC, ISO/DIN		



CROSS-PORT RELIEF ASSEMBLY WITH SHUTTLE AND SOLENOID OPERATED VENT

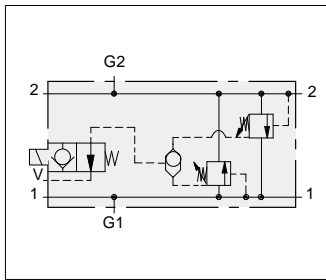


- Maximum operating pressure 210 bar.
- Power requirement: 12 watts.

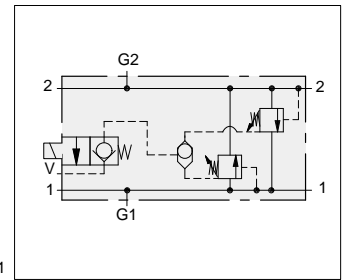
YVFG: Normally Open

YVFH: Normally Closed

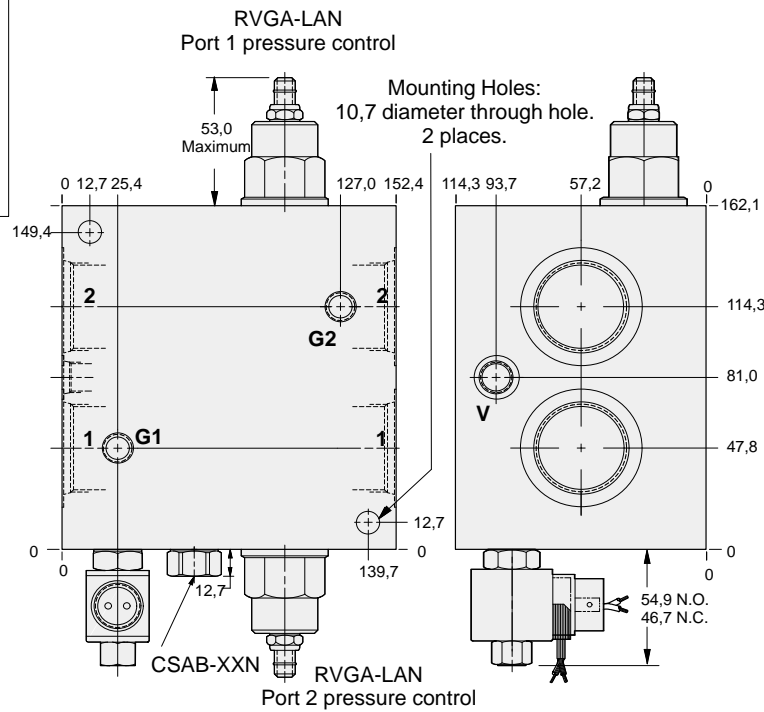
ALUMINIUM		SG IRON		Ports 1 & 2	Port V	Ports G1 & G2	ALUMINIUM		SG IRON	
Port Code	List Price	Port Code	List Price				Port Code	List Price	Port Code	List Price
D		D/S		.75 NPTF	.25 NPTF	.25 NPTF	D		D/S	
E		E/S		1.00 NPTF	.25 NPTF	.25 NPTF	E		E/S	
F		F/S		1.25 NPTF	.25 NPTF	.25 NPTF	F		F/S	
L		L/S		SAE-12	SAE-6	.25 NPTF	L		L/S	
M		M/S		SAE-16	SAE-6	.25 NPTF	M		M/S	
N		N/S		SAE-20	SAE-6	.25 NPTF	N		N/S	
W		W/S		.75 BSPP	.25 BSPP	.25 BSPP	W		W/S	
X		X/S		1.00 BSPP	.25 BSPP	.25 BSPP	X		X/S	
Y		Y/S		1.25 BSPP	.25 BSPP	.25 BSPP	Y		Y/S	



Normally Open Solenoid Valve



Normally Closed Solenoid Valve



OPTIONS		YVF * - LAN **		
	CARTRIDGE	SOLENOID COILS		PORTS
G	Normally Open	RVGA Pg 1.19	J 12 volt DC, 0,6 metre leads	T 24 volt DC, ISO/DIN
H	Normally Closed	For Viton Seals Change LAN to LAV. Customer Specified Setting Stamped on Hex	K 24 volt DC, 0,6 metre leads	V 230 volt, 50/60 Hz, ISO/DIN
			N 115 volt, 50/60 Hz, conduit	W 120 volt, 50/60 Hz, ISO/DIN
			O 230 volt, 50/60 Hz, conduit	
			S 12 volt DC, ISO/DIN	
				See Chart above



CROSS-PORT RELIEF ASSEMBLY WITH SHUTTLE AND SOLENOID OPERATED VENT

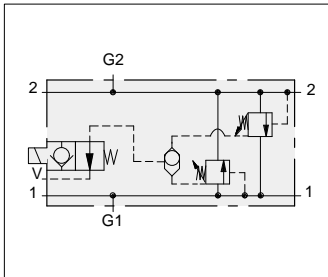


- Maximum operating pressure 210 bar.
- Power requirement: 12 watts.

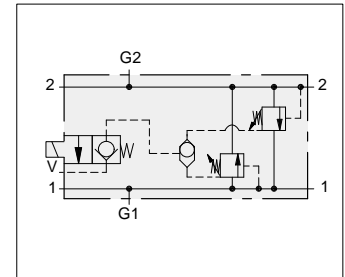
YVFG: Normally Open

YVFH: Normally Closed

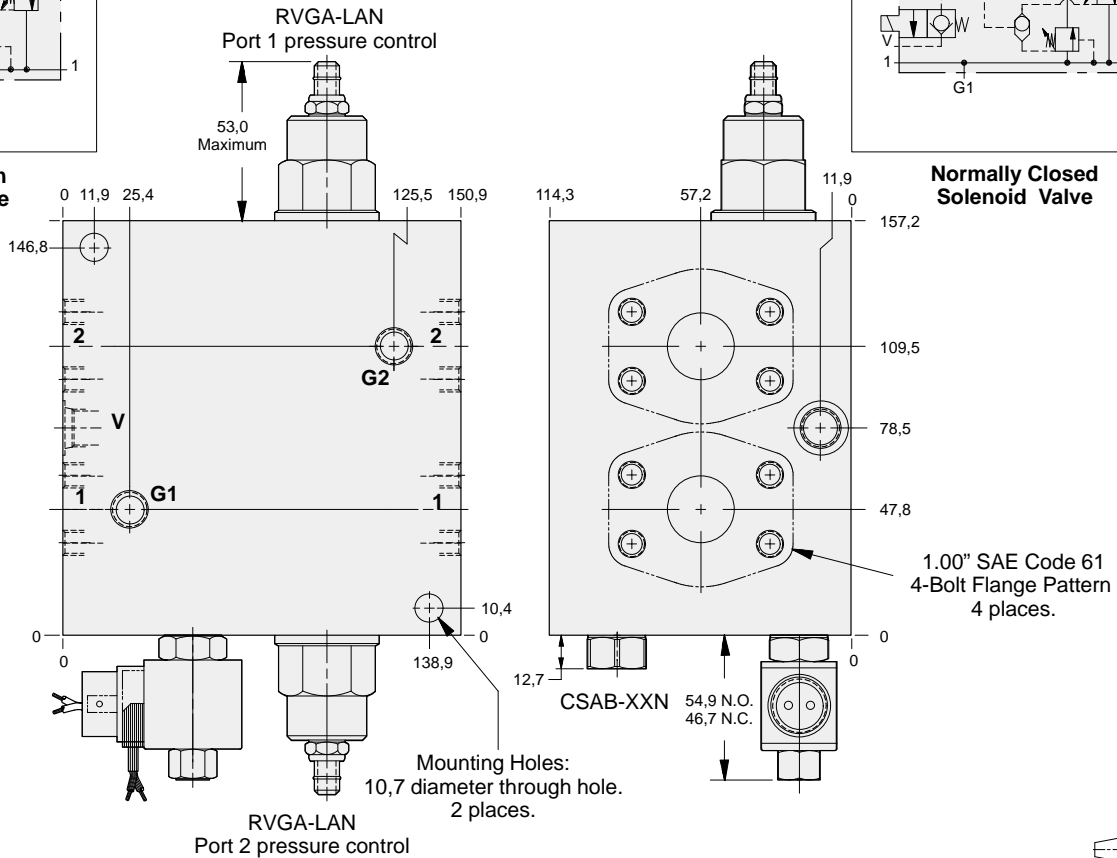
ALUMINIUM		SG IRON		Mounting Hole Dimensions	Port V	Ports G1 & G2	ALUMINIUM		SG IRON	
Port Code	List Price	Port Code	List Price				Port Code	List Price	Port Code	List Price
P		P/S		Inch	SAE-6	.25 NPTF	P		P/S	
P/M		P/T		Metric	.25 BSPP	.25 BSPP	P/M		P/T	



Normally Open Solenoid Valve



Normally Closed Solenoid Valve



OPTIONS

YVF * - LAN - * *

	CARTRIDGE	SOLENOID COILS	PORTS
G	Normally Open RVGA Pg 1.19	J 12 volt DC, 0,6 metre leads	T 24 volt DC, ISO/DIN
H	Normally Closed For Viton Seals Change LAN to LAV. Customer Specified Setting Stamped on Hex	K 24 volt DC, 0,6 metre leads	V 230 volt, 50/60 Hz, ISO/DIN
		N 115 volt, 50/60 Hz, conduit	W 120 volt, 50/60 Hz, ISO/DIN
		O 230 volt, 50/60 Hz, conduit	
		S 12 volt DC, ISO/DIN	See Chart above



CROSS-PORT RELIEF ASSEMBLY WITH SHUTTLE AND SOLENOID OPERATED VENT

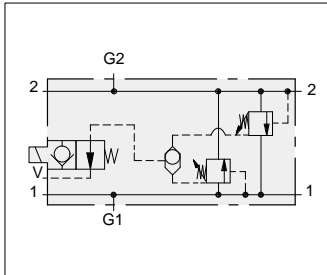


- Maximum operating pressure 210 bar.
- Power requirement: 12 watts.

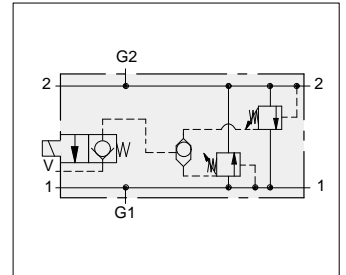
YVFG: Normally Open

YVFH: Normally Closed

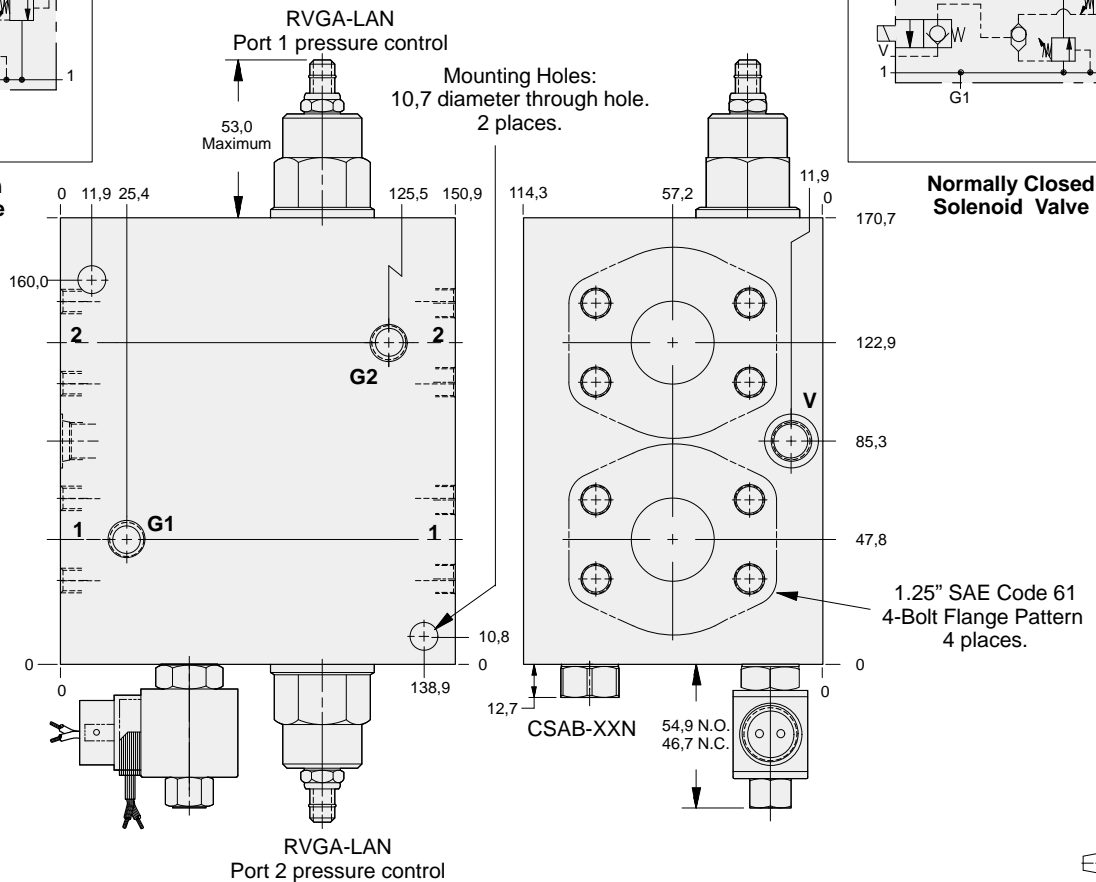
ALUMINIUM		SG IRON		Mounting Hole Dimensions	Port V	Ports G1 & G2	ALUMINIUM		SG IRON	
Port Code	List Price	Port Code	List Price				Port Code	List Price	Port Code	List Price
Q		Q/S		Inch	SAE-6	.25 NPTF	Q		Q/S	
Q/M		Q/T		Metric	.25 BSPP	.25 BSPP	Q/M		Q/T	



Normally Open Solenoid Valve



Normally Closed Solenoid Valve



OPTIONS		YVF * - LAN - **			
	CARTRIDGE	SOLENOID COILS		PORTS	
G	Normally Open RVGA Pg 1.19	J	12 volt DC, 0,6 metre leads	T	24 volt DC, ISO/DIN
H	Normally Closed For Viton Seals Change LAN to LAV. Customer Specified Setting Stamped on Hex	K	24 volt DC, 0,6 metre leads	V	230 volt, 50/60 Hz, ISO/DIN
		N	115 volt, 50/60 Hz, conduit	W	120 volt, 50/60 Hz, ISO/DIN
		O	230 volt, 50/60 Hz, conduit		
		S	12 volt DC, ISO/DIN		See Chart above