



FLOW DIVIDER/COMBINER TRACTIVE DRIVE ASSEMBLY



- Aluminium rated to 210 bar and SG Iron rated to 350 bar.
- Replaceable slip orifices.

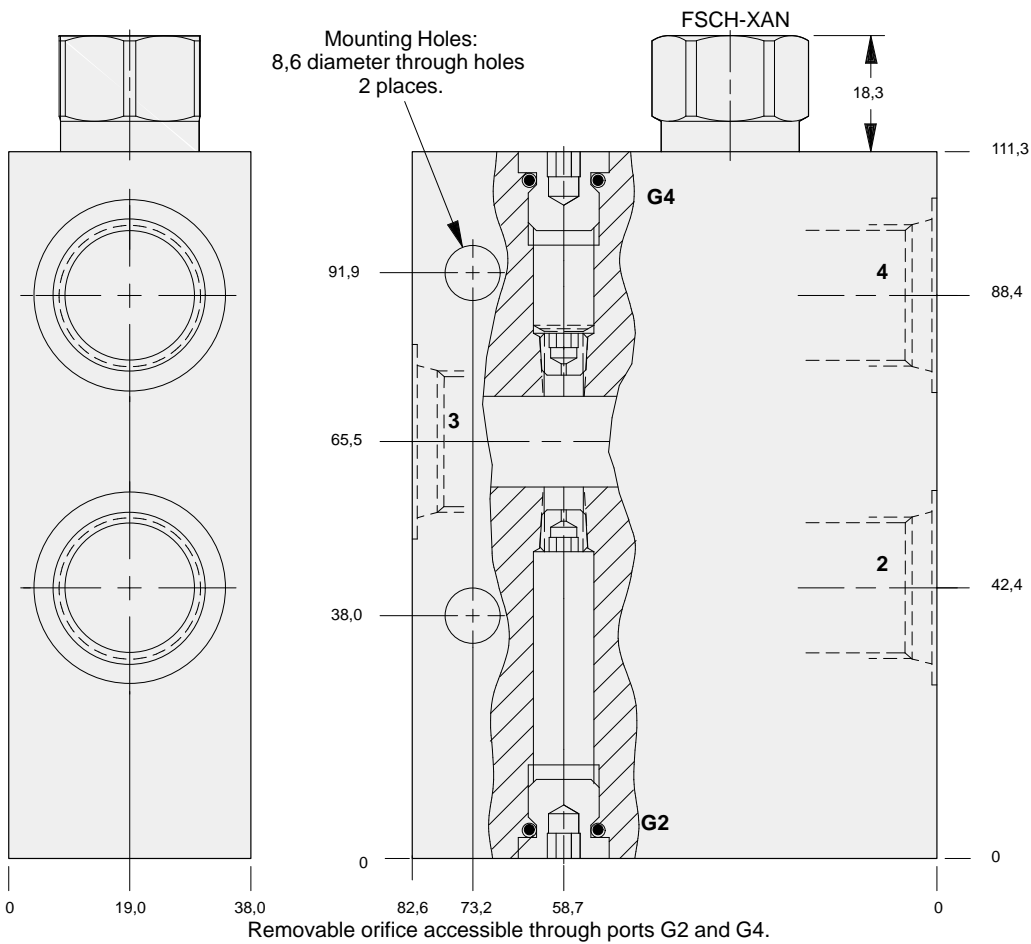
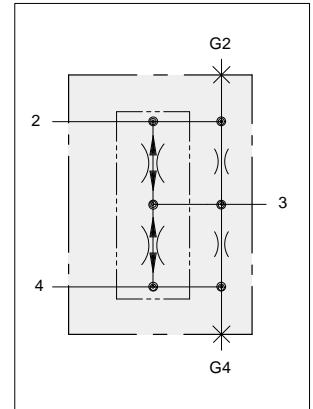
Orifice Options

Orifice Code	Slip at 25 bar	Slip at 210 bar
	Flow (L/min)	Flow (L/min)
A	0	0
L	2,6	7,2
P	6,4	17,8
R	10,5	29,1

Other slip ranges are available, and are detailed on SUN drawing #280-038.
Slip at 25 bar is additive to basic capacity.

Port Options

Ports 2, 3 & 4	ALUMINIUM		SG IRON	
	Port Code	List Price	Port Code	List Price
.25 NPTF	A		A/S	
.375 NPTF	B		B/S	
.50 NPTF	C		C/S	
SAE-6	I		I/S	
SAE-8	J		J/S	
SAE-10	K		K/S	
.25 BSPP	T		T/S	
.375 BSPP	U		U/S	
.50 BSPP	V		V/S	



13

OPTIONS

YGCB - XAN - * *

CARTRIDGE

FSCH Pg 7.14
For Viton Seals Change
XAN to XAV.

Customer Specified Setting
Stamped on Hex

ORIFICE

See Chart
above

PORTS

See Chart
above



FLOW DIVIDER/COMBINER TRACTIVE DRIVE ASSEMBLY



- Aluminium rated to 210 bar and SG Iron rated to 350 bar.
- Replaceable slip orifices.

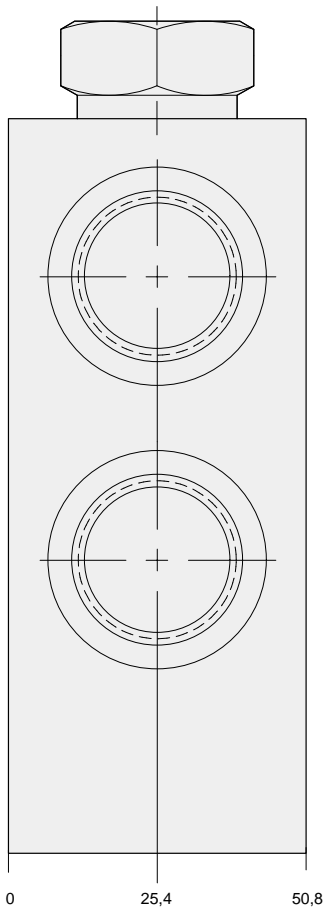
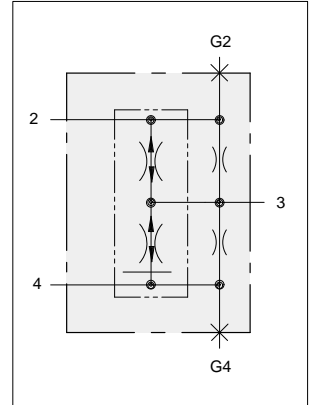
Orifice Options

Orifice Code	Slip at 25 bar	Slip at 210 bar
	Flow (L/min)	Flow (L/min)
A	0	0
N	4,5	12,0
S	13	35,0
U	23,0	61,0

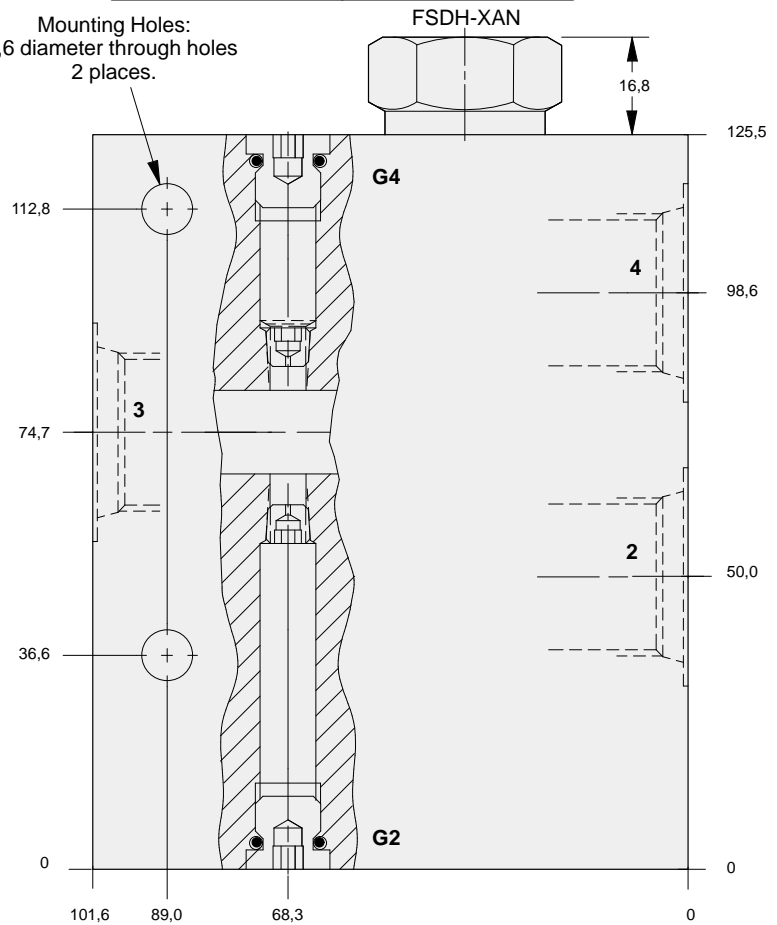
Other slip ranges are available, and are detailed on SUN drawing #280-038. Slip at 25 bar is additive to basic capacity.

Port Options

Ports 2, 3 & 4	ALUMINIUM		SG IRON	
	Port Code	List Price	Port Code	List Price
.375 NPTF	B		B/S	
.50 NPTF	C		C/S	
.75 NPTF	D		D/S	
SAE-8	J		J/S	
SAE-10	K		K/S	
SAE-12	L		L/S	
.375 BSPP	U		U/S	
.50 BSPP	V		V/S	
.75 BSPP	W		W/S	



Mounting Holes:
8,6 diameter through holes
2 places.



Removable orifice accessible through ports G2 and G4.



OPTIONS	YGDB - XAN - * *		
CARTRIDGE FSDH Pg 7.14 For Viton Seals Change XAN to XAV.	Customer Specified Setting Stamped on Hex	ORIFICE See Chart above	PORTS See Chart above



FLOW DIVIDER/COMBINER TRACTIVE DRIVE ASSEMBLY



- Aluminium rated to 210 bar and SG Iron rated to 350 bar.
- Replaceable slip orifices.

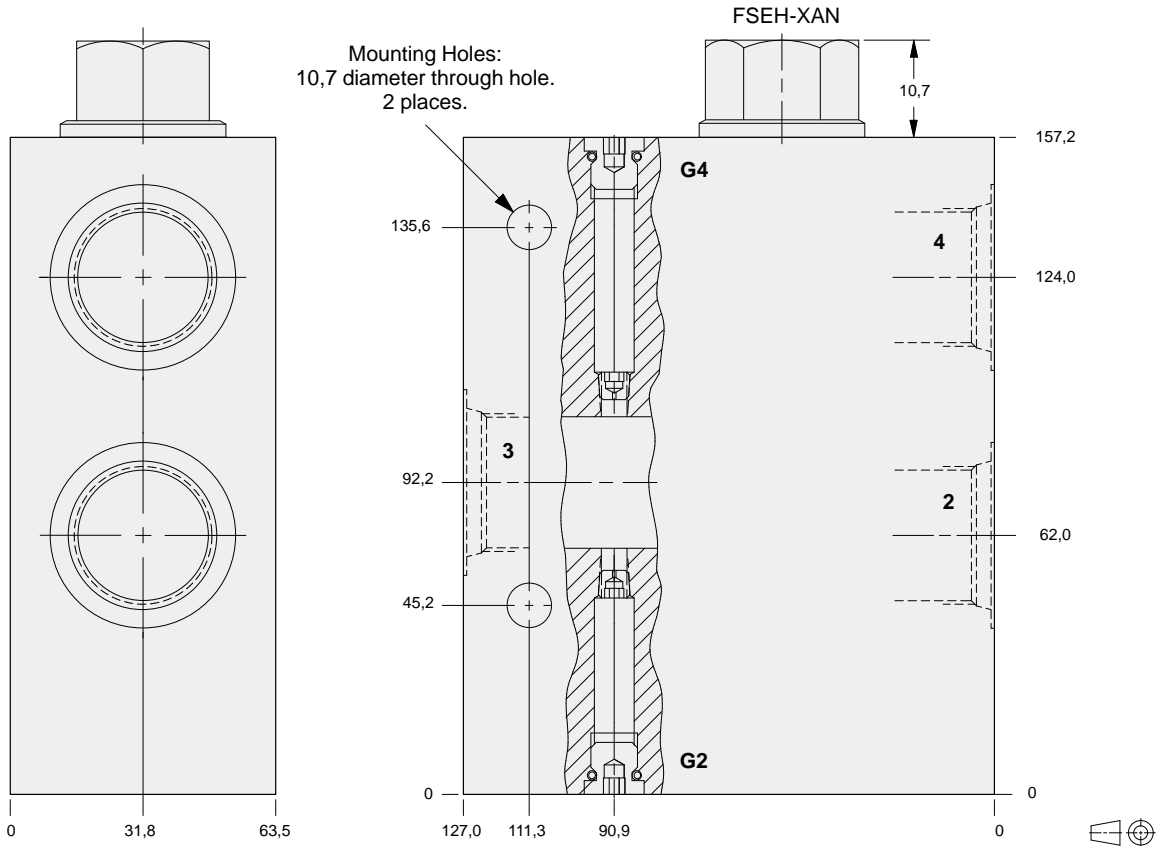
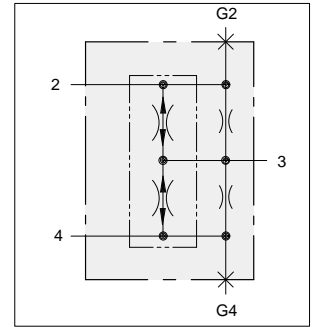
Orifice Options

Orifice Code	Slip at 25 bar	Slip at 210 bar
	Flow (L/min)	Flow (L/min)
A	0	0
Q	8,7	24,0
U	23,0	61,0
W	35,0	96,0

Other slip ranges are available, and are detailed on SUN drawing #280-038.
Slip at 25 bar additive to basic capacity.

Port Options

Ports 2, 3 & 4	ALUMINIUM		SG IRON	
	Port Code	List Price	Port Code	List Price
.75 NPTF	D		D/S	
1.00 NPTF	E		E/S	
SAE-12	L		L/S	
SAE-16	M		M/S	
.75 BSPP	W		W/S	
1.00 BSPP	X		X/S	



Removable orifice accessible through ports G2 and G4.

OPTIONS

YGEB - XAN - * *

CARTRIDGE

FSEH Pg 7.15
For Viton Seals Change
XAN to XAV.

Customer Specified Setting
Stamped on Hex

ORIFICE

See Chart
above

PORTS

See Chart
above



FLOW DIVIDER/COMBINER TRACTIVE DRIVE ASSEMBLY



- Aluminium rated to 210 bar and SG Iron rated to 350 bar.
- Replaceable slip orifices.

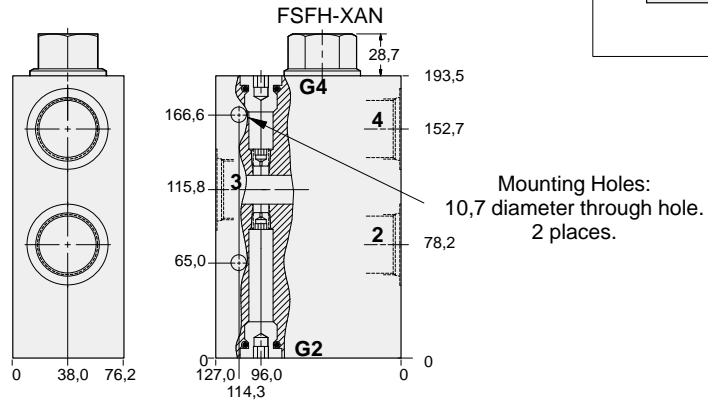
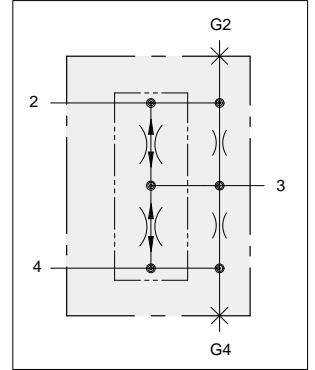
Orifice Options

Orifice Code	Slip at 25 bar	Slip at 210 bar
	Flow (L/min)	Flow (L/min)
A	0	0
T	17,0	45,0
X	50,0	140,0
Y	90,0	245,0

Other slip ranges are available, and are detailed on SUN drawing #280-040.
Slip at 25 bar is additive to basic capacity.

Port Options

Ports 2, 3 & 4	ALUMINIUM		SG IRON	
	Port Code	List Price	Port Code	List Price
1.00 NPTF	E		E/S	
1.25 NPTF	F		F/S	
SAE-16	M		M/S	
SAE-20	N		N/S	
1.00 BSPP	X		X/S	
1.25 BSPP	Y		Y/S	



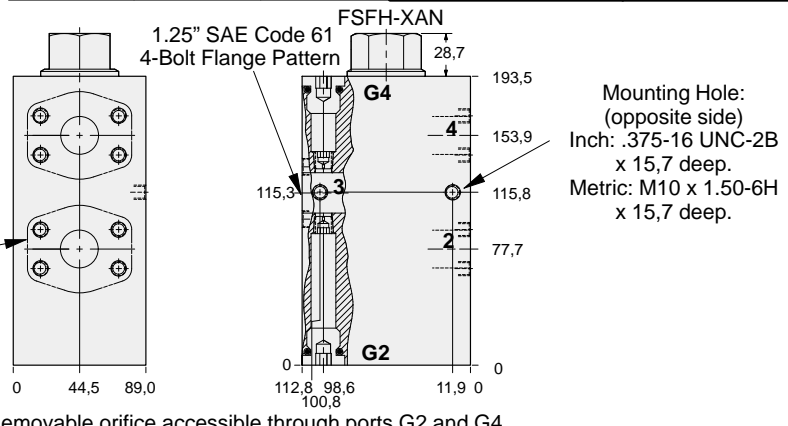
Orifice Options

Orifice Code	Slip at 25 bar	Slip at 210 bar
	Flow (L/min)	Flow (L/min)
A	0	0
T	17,0	45,0
X	50,0	140,0
Y	90,0	245,0

Other slip ranges are available, and are detailed on SUN drawing #280-040.
Slip at 25 bar is additive to basic capacity.

Removable orifice accessible through ports G2 and G4.

Mounting Holes:	Port 3 Code 61	Port 2 & 4 Code 61	ALUMINIUM		SG IRON	
			Port Code	List Price	Port Code	List Price
Inch	1.25"	1.00"	Q		Q/S	
Metric	1.25"	1.00"	Q/M		Q/T	



1.00" SAE Code 61
4-Bolt Flange Pattern
2 places.

Removable orifice accessible through ports G2 and G4.

OPTIONS

YGFB - XAN - * *

CARTRIDGE

FSFH Pg.7.15
For Viton Seals Change
XAN to XAV.

Customer Specified Setting
Stamped on Hex

ORIFICE

See Chart
above

PORTS

See Chart
above