



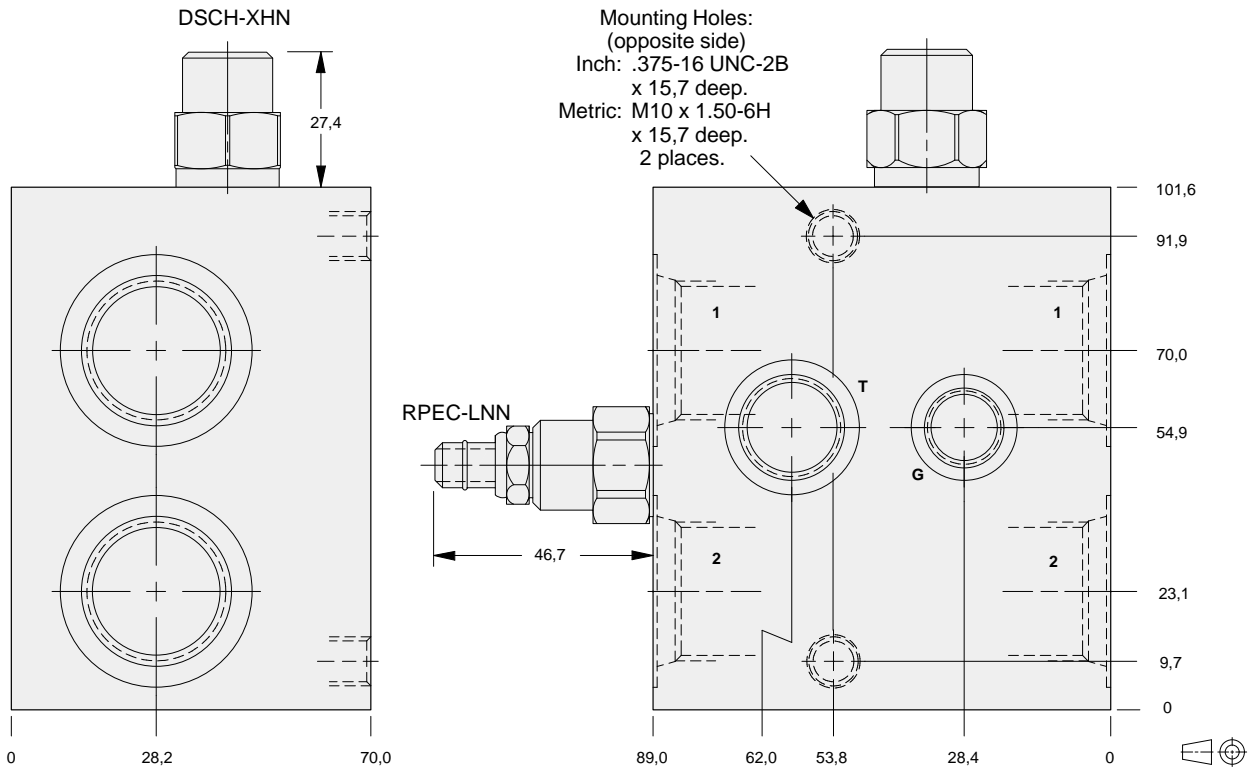
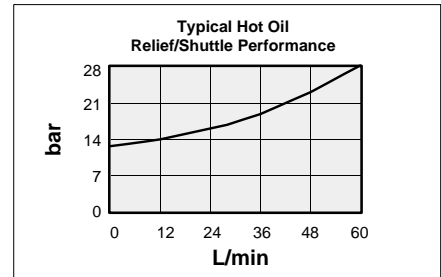
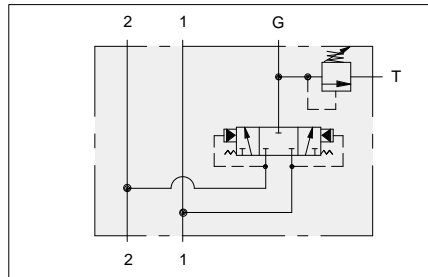
HOT OIL SHUTTLE AND RELIEF ASSEMBLY INLINE BODY



- Aluminium rated to 210 bar and SG Iron rated to 350 bar.
- Hot oil pressure can be confirmed and/or set with transmission in neutral.

These SUN valve assemblies are for use in bleed-off of hot oil from the low pressure side of a hydrostatic transmission circuit. The hot oil can be cooled, filtered, or used as a source of oil for flushing other pump and motor cases. The hot oil is removed from the loop when the SUN RPEC cartridge is set below the hydrostatic charge pressure relief valve.

Mounting Hole Dimensions	Ports 1 & 2	Port T	Gauge Port	ALUMINIUM		SG IRON	
				Port Code	List Price	Port Code	List Price
Inch	SAE-10	SAE-8	SAE-6	K		K/S	
Inch	SAE-12	SAE-8	SAE-6	L		L/S	
Metric	.50 BSPP	.375 BSPP	.25 BSPP	V		V/S	
Metric	.75 BSPP	.375 BSPP	.25 BSPP	W		W/S	



13

OPTIONS	XRDC - LNN - A*		
	CARTRIDGE RPEC Pg 1.11 For Viton Seals Change LNN to LNV.	Customer Specified Setting Stamped on Hex	PORTS See Chart above

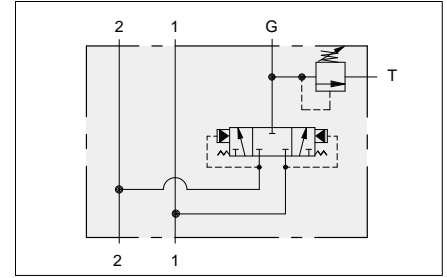


HOT OIL SHUTTLE AND RELIEF ASSEMBLY .75" SAE FLANGE PORT BODY



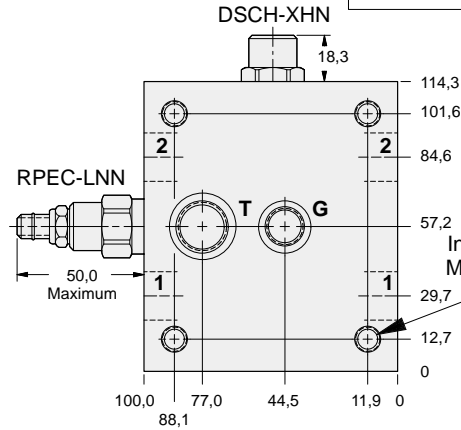
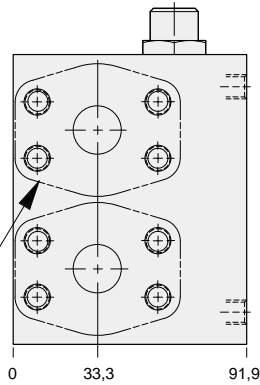
- Aluminium rated to 210 bar and SG Iron rated to 350 bar.
- Hot oil pressure can be confirmed and/or set with transmission in neutral.

Mounting Hole Dimensions	Ports 1 & 2	Port T	Gauge Port	ALUMINIUM		SG IRON	
				Port Code	List Price	Port Code	List Price
Inch	Code 61	SAE-8	SAE-6	O		O/S	
Metric	Code 61	.375 BSPP	.25 BSPP	O/M		O/T	



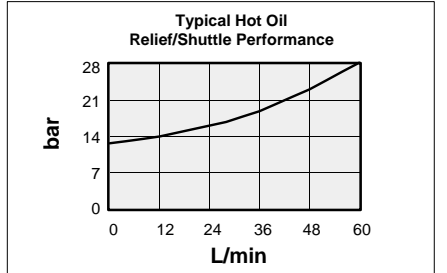
These SUN valve assemblies are for use in bleed-off of hot oil from the low pressure side of a hydrostatic transmission circuit. The hot oil can be cooled, filtered, or used as a source of oil for flushing other pump and motor cases. The hot oil is removed from the loop when the SUN RPEC cartridge is set below the hydrostatic charge pressure relief valve.

.75" SAE Code 61
4-Bolt Flange Pattern
4 places.

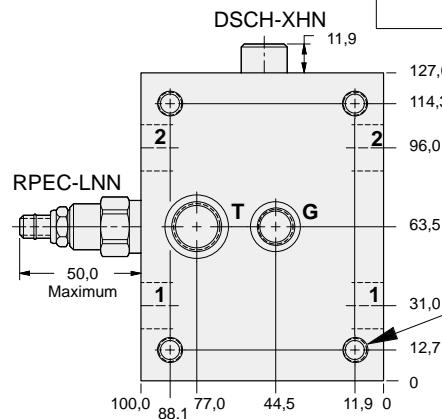
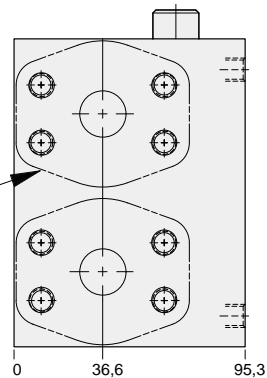


Mounting Holes:
(opposite side)
Inch: .375-16 UNC-2B x 15,7 deep
Metric: M10 X 1.50-6H x 15,7 deep
4 places.

Mounting Hole Dimensions	Ports 1 & 2	Port T	Gauge Port	ALUMINIUM		SG IRON	
				Port Code	List Price	Port Code	List Price
Inch	Code 62	SAE-8	SAE-6	3		3/S	
Metric	Code 62	.375 BSPP	.25 BSPP	3/M		3/T	



.75" SAE Code 62
4-Bolt Flange Pattern
4 places.



Mounting Holes:
(opposite side)
Inch: .375-16 UNC-2B x 15,7 deep
Metric: M10 X 1.50-6H x 15,7 deep
4 places.

OPTIONS		XRDC - LNN - A*	
CARTRIDGE	RPEC Pg 1.06 For Viton Seals Change LNN to LNV.	Customer Specified Setting Stamped on Hex	PORTS See Chart above



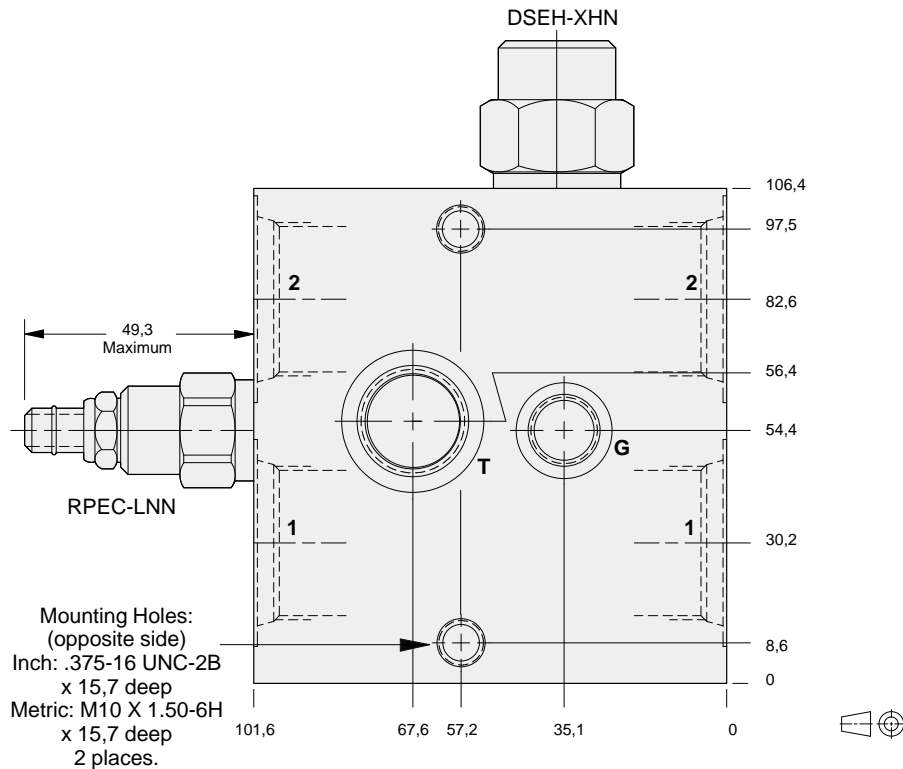
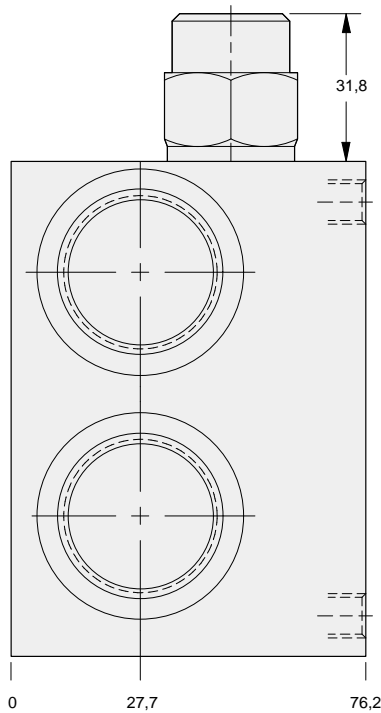
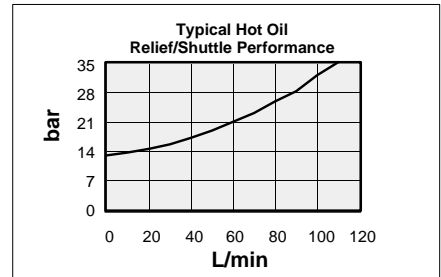
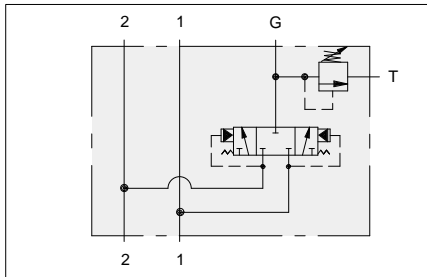
HOT OIL SHUTTLE AND RELIEF ASSEMBLY INLINE BODY



- Aluminium rated to 210 bar and SG Iron rated to 350 bar.
- Hot oil pressure can be confirmed and/or set with transmission in neutral.

These SUN valve assemblies are for use in bleed-off of hot oil from the low pressure side of a hydrostatic transmission circuit. The hot oil can be cooled, filtered, or used as a source of oil for flushing other pump and motor cases. The hot oil is removed from the loop when the SUN RPEC cartridge is set below the hydrostatic charge pressure relief valve.

Mounting Hole Dimensions	Ports 1 & 2	Port T	Gauge Port	ALUMINIUM		SG IRON	
				Port Code	List Price	Port Code	List Price
Inch	SAE-12	SAE-10	SAE-6	L		L/S	
Inch	SAE-16	SAE-10	SAE-6	M		M/S	
Metric	.75 BSPP	.50 BSPP	.25 BSPP	W		W/S	
Metric	1.00 BSPP	.50 BSPP	.25 BSPP	X		X/S	



13

OPTIONS	XRFC - LNN	A*
CARTRIDGE RPEC Pg 1.06 For Viton Seals Change LNN to LNV.	Customer Specified Setting Stamped on Hex	PORTS See Chart above

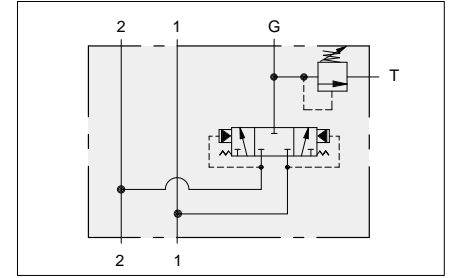


HOT OIL SHUTTLE AND RELIEF ASSEMBLY 1.00" SAE FLANGE PORT BODY

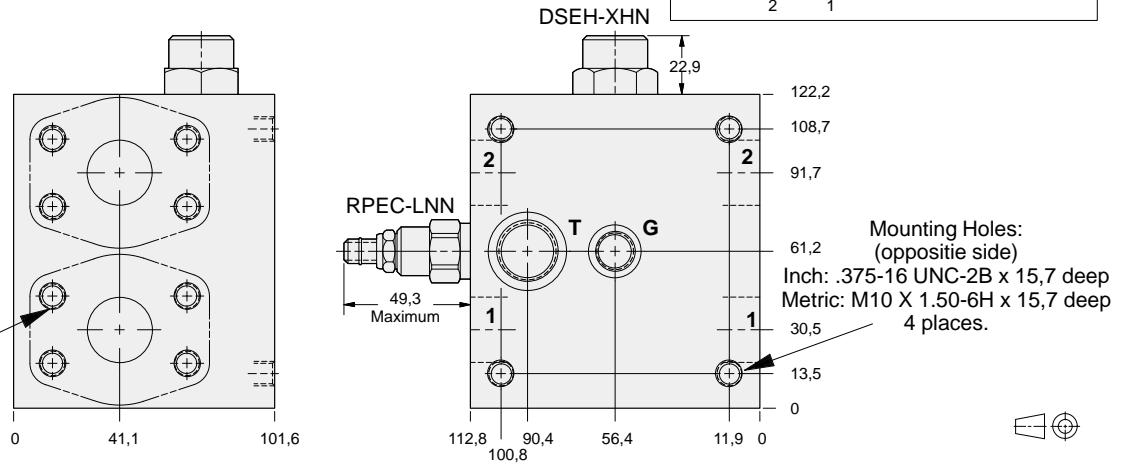


- Aluminium rated to 210 bar and SG Iron rated to 350 bar.
- Hot oil pressure can be confirmed and/or set with transmission in neutral.

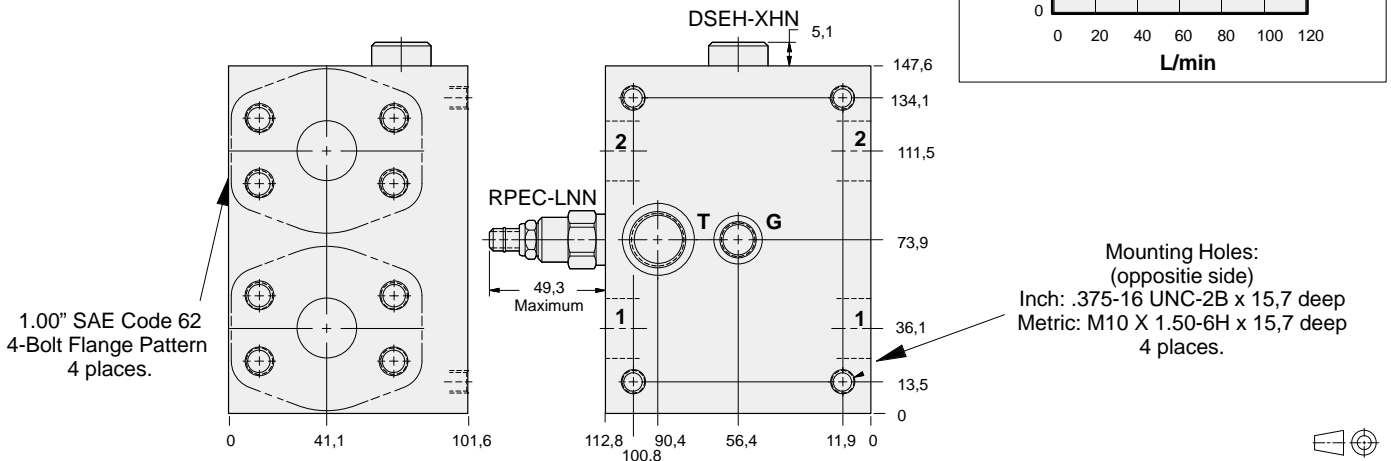
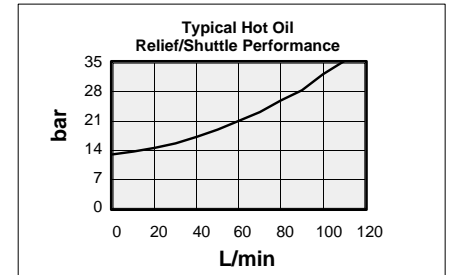
Mounting Hole Dimensions	Ports 1 & 2	Port T	Gauge Port	ALUMINIUM		SG IRON	
				Port Code	List Price	Port Code	List Price
Inch	Code 61	SAE-10	SAE-6	P		P/S	
Metric	Code 61	.50 BSPP	.25 BSPP	P/M		P/T	



These SUN valve assemblies are for use in bleed-off of hot oil from the low pressure side of a hydrostatic transmission circuit. The hot oil can be cooled, filtered, or used as a source of oil for flushing other pump and motor cases. The hot oil is removed from the loop when the SUN RPEC cartridge is set below the hydrostatic charge pressure relief valve.



Mounting Hole Dimensions	Ports 1 & 2	Port T	Gauge Port	ALUMINIUM		SG IRON	
				Port Code	List Price	Port Code	List Price
Inch	Code 62	SAE-10	SAE-6	4		4/S	
Metric	Code 62	.50 BSPP	.25 BSPP	4/M		4/T	



OPTIONS

XRFC - LNN - A*

CARTRIDGE

RPEC Pg 1.06
For Viton Seals Change LNN to LNV.

Customer Specified Setting
Stamped on Hex

PORTS

See Chart
above



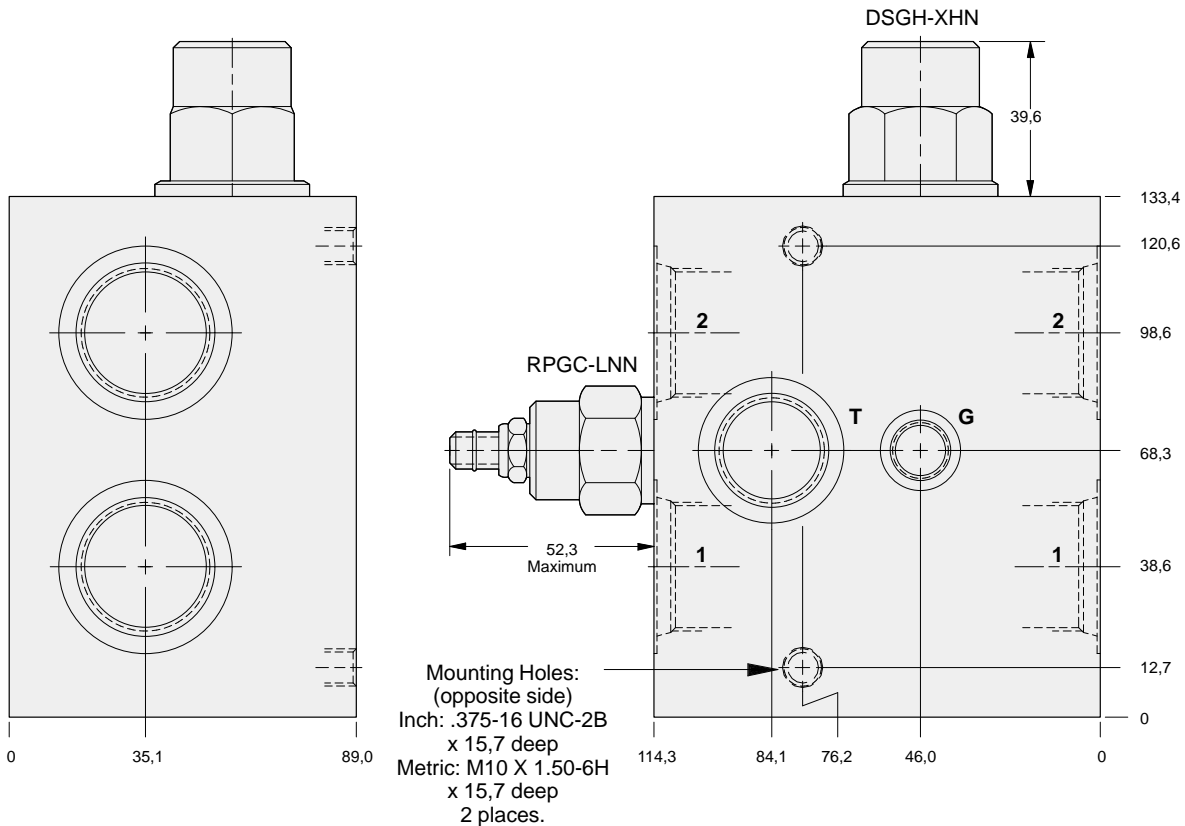
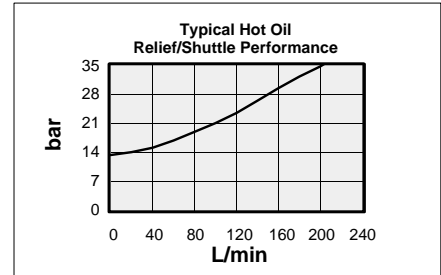
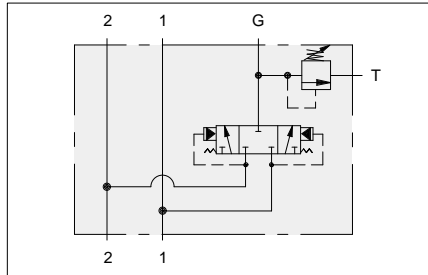
HOT OIL SHUTTLE AND RELIEF ASSEMBLY INLINE BODY



- Aluminium rated to 210 bar and SG Iron rated to 350 bar.
- Hot oil pressure can be confirmed and/or set with transmission in neutral.

These SUN valve assemblies are for use in bleed-off of hot oil from the low pressure side of a hydrostatic transmission circuit. The hot oil can be cooled, filtered, or used as a source of oil for flushing other pump and motor cases. The hot oil is removed from the loop when the SUN RPGC cartridge is set below the hydrostatic charge pressure relief valve.

Mounting Hole Dimensions	Ports 1 & 2	Port T	Gauge Port	ALUMINIUM		SG IRON	
				Port Code	List Price	Port Code	List Price
Inch	SAE-16	SAE-12	SAE-6	M		M/S	
Metric	1.00 BSPP	.75 BSPP	.25 BSPP	X		X/S	



13

OPTIONS	XRHC - LNN - A*	
	CARTRIDGE RPGC Pg 1.06 For Viton Seals Change LNN to LNV.	PORTS See Chart above
	Customer Specified Setting Stamped on Hex	

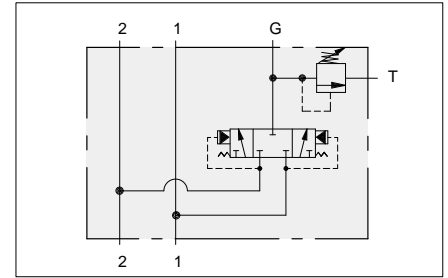


HOT OIL SHUTTLE AND RELIEF ASSEMBLY 1.25" SAE FLANGE PORT BODY



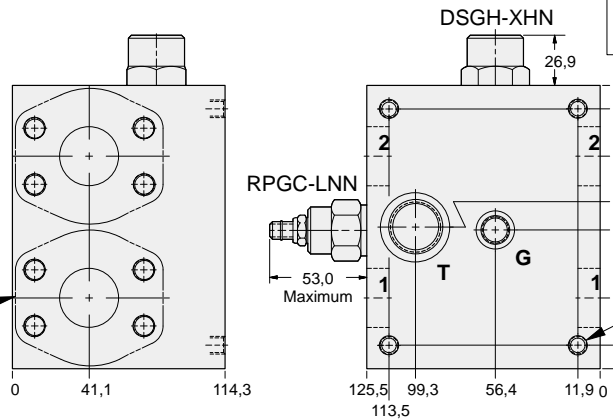
- Aluminium rated to 210 bar and SG Iron rated to 350 bar.
- Hot oil pressure can be confirmed and/or set with transmission in neutral.

Mounting Hole Dimensions	Ports 1 & 2	Port T	Gauge Port	ALUMINIUM		SG IRON	
				Port Code	List Price	Port Code	List Price
Inch	Code 61	SAE-12	SAE-6	Q		Q/S	
Metric	Code 61	.75 BSPP	.25 BSPP	Q/M		Q/T	



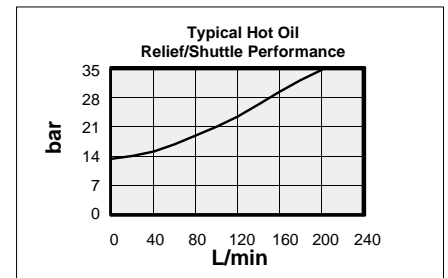
These SUN valve assemblies are for use in bleed-off of hot oil from the low pressure side of a hydrostatic transmission circuit. The hot oil can be cooled, filtered, or used as a source of oil for flushing other pump and motor cases. The hot oil is removed from the loop when the SUN RPGC cartridge is set below the hydrostatic charge pressure relief valve.

1.25" SAE Code 61
4-Bolt Flange Pattern
4 places.

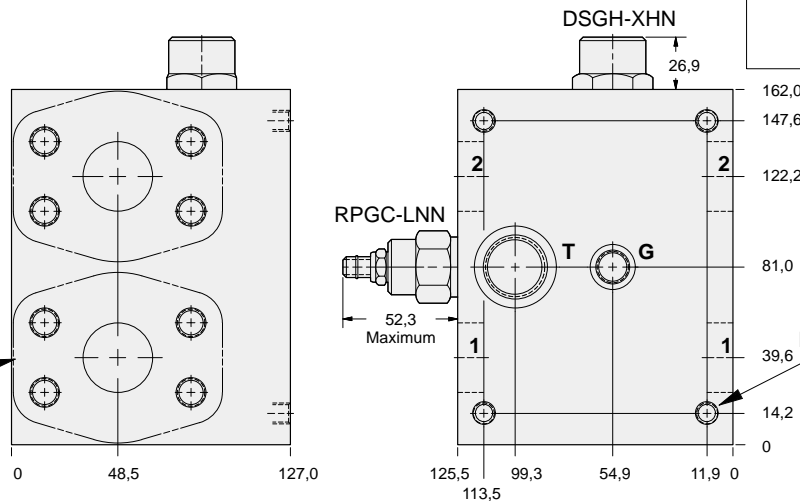


Mounting Holes:
(opposite side)
Inch: .375-16 UNC-2B x 15,7 deep
Metric: M10 X 1.50-6H x 15,7 deep
4 places.

Mounting Hole Dimensions	Ports 1 & 2	Port T	Gauge Port	ALUMINIUM		SG IRON	
				Port Code	List Price	Port Code	List Price
Inch	Code 62	SAE-12	SAE-6	5		5/S	
Metric	Code 62	.75 BSPP	.25 BSPP	5/M		5/T	



1.25" SAE Code 62
4-Bolt Flange Pattern
4 places.



Mounting Holes:
(opposite side)
Inch: .375-16 UNC-2B x 15,7 deep
Metric: M10 X 1.50-6H x 15,7 deep
4 places.

OPTIONS

XRHC - LNN - A*

CARTRIDGE

RPGC Pg 1.06
For Viton Seals Change LNN to LNV.

Customer Specified Setting
Stamped on Hex

PORTS

See Chart above



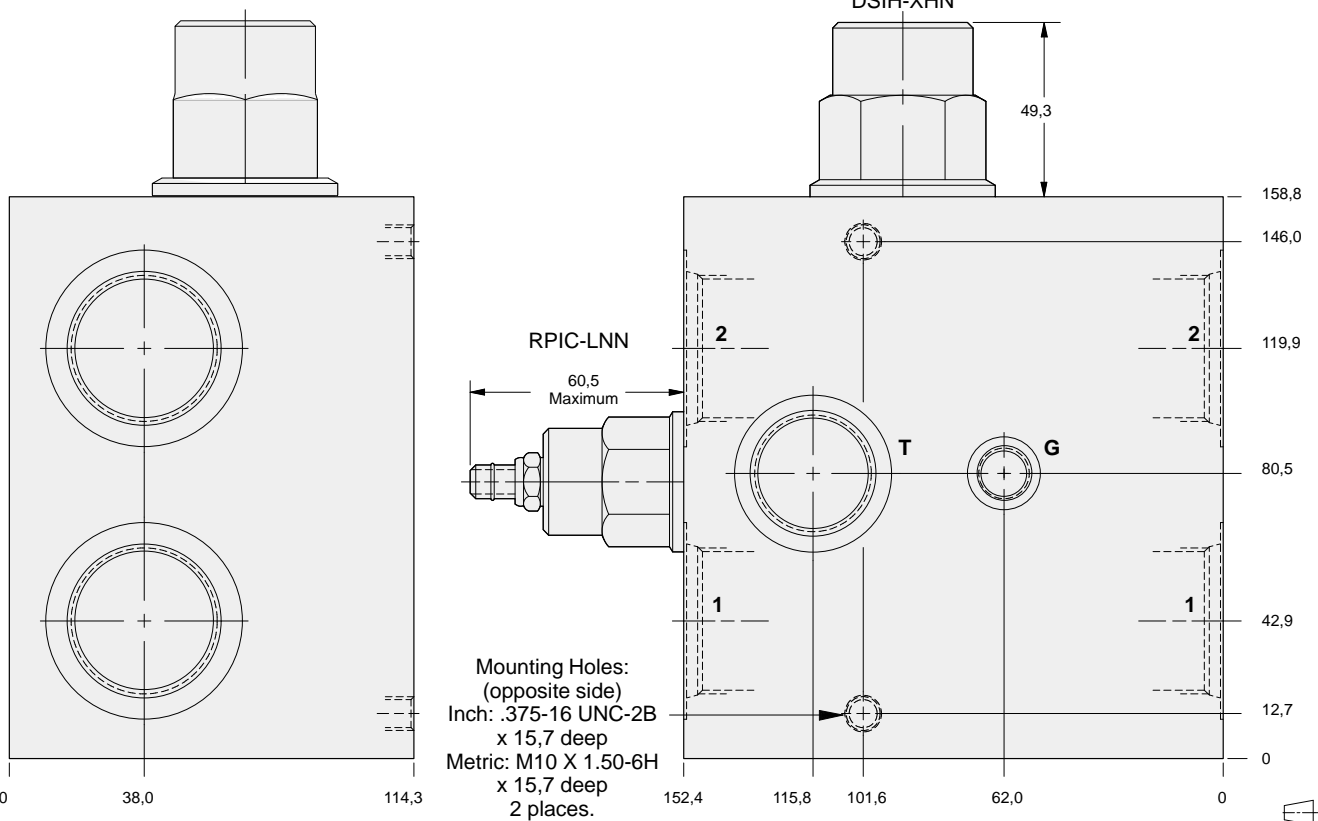
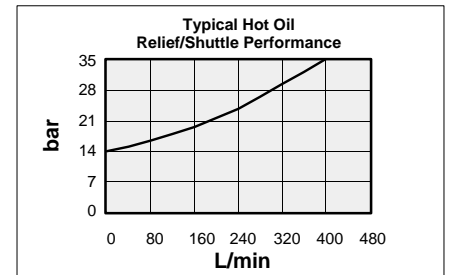
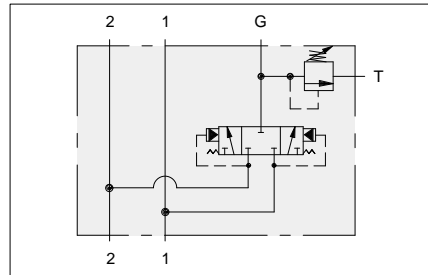
HOT OIL SHUTTLE AND RELIEF ASSEMBLY INLINE BODY



- Aluminium rated to 210 bar and SG Iron rated to 350 bar.
- Hot oil pressure can be confirmed and/or set with transmission in neutral.

These SUN valve assemblies are for use in bleed-off of hot oil from the low pressure side of a hydrostatic transmission circuit. The hot oil can be cooled, filtered, or used as a source of oil for flushing other pump and motor cases. The hot oil is removed from the loop when the SUN RPIC cartridge is set below the hydrostatic charge pressure relief valve.

Mounting Hole Dimensions	Ports 1 & 2	Port T	Gauge Port	ALUMINIUM		SG IRON	
				Port Code	List Price	Port Code	List Price
Inch	SAE-20	SAE-16	SAE-6	M		M/S	
Metric	1.25 BSPP	1.00 BSPP	.25 BSPP	X		X/S	



OPTIONS	XRJC - LNN - A*		
	CARTRIDGE RPIC Pg 1.07 For Viton Seals Change LNN to LNV.	Customer Specified Setting Stamped on Hex	PORTS See Chart above

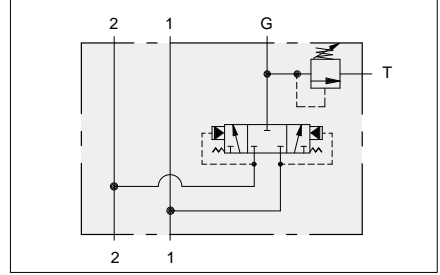


HOT OIL SHUTTLE AND RELIEF ASSEMBLY 1.50" SAE FLANGE PORT BODY



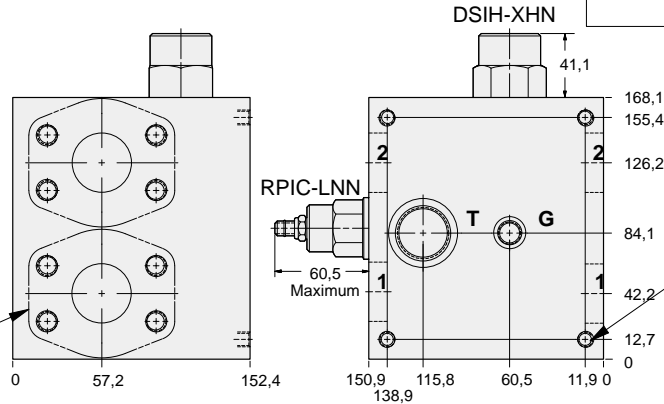
- Aluminium rated to 210 bar and SG Iron rated to 350 bar.
- Hot oil pressure can be confirmed and/or set with transmission in neutral.

Mounting Hole Dimensions	Ports 1 & 2	Port T	Gauge Port	ALUMINIUM		SG IRON	
				Port Code	List Price	Port Code	List Price
Inch	Code 61	SAE-16	SAE-6	R		R/S	
Metric	Code 61	1.00 BSPP	.25 BSPP	R/M		R/T	



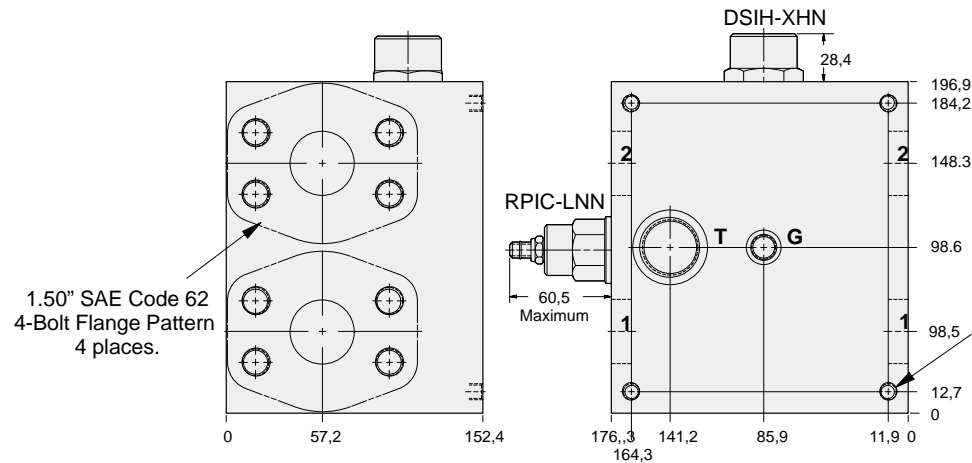
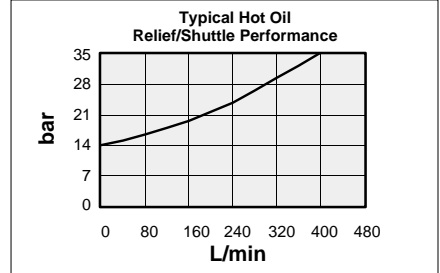
These SUN valve assemblies are for use in bleed-off of hot oil from the low pressure side of a hydrostatic transmission circuit. The hot oil can be cooled, filtered, or used as a source of oil for flushing other pump and motor cases. The hot oil is removed from the loop when the SUN RPIC cartridge is set below the hydrostatic charge pressure relief valve.

1.50" SAE Code 61
4-Bolt Flange Pattern
4 places.



Mounting Holes:
(opposite side)
Inch: .375-16 UNC-2B x 15,7 deep
Metric: M10 X 1.50-6H x 15,7 deep
4 places.

Mounting Hole Dimensions	Ports 1 & 2	Port T	Gauge Port	ALUMINIUM		SG IRON	
				Port Code	List Price	Port Code	List Price
Inch	Code 62	SAE-16	SAE-6	6		6/S	
Metric	Code 62	1.00 BSPP	.25 BSPP	6/M		6/T	



Mounting Holes:
(opposite side)
Inch: .375-16 UNC-2B x 15,7 deep
Metric: M10 X 1.50-6H x 15,7 deep
4 places.

13

OPTIONS

XRJC - LNN - A*

CARTRIDGE

RPIC Pg 1.07
For Viton Seals Change LNN to LNV.

Customer Specified Setting
Stamped on Hex

PORTS

See Chart above

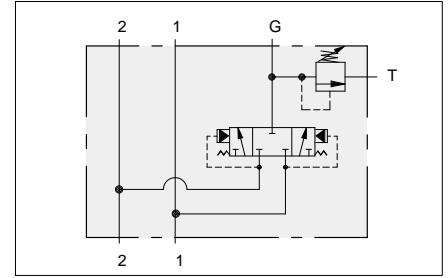


HOT OIL SHUTTLE AND RELIEF ASSEMBLY 2.00" SAE FLANGE PORT BODY



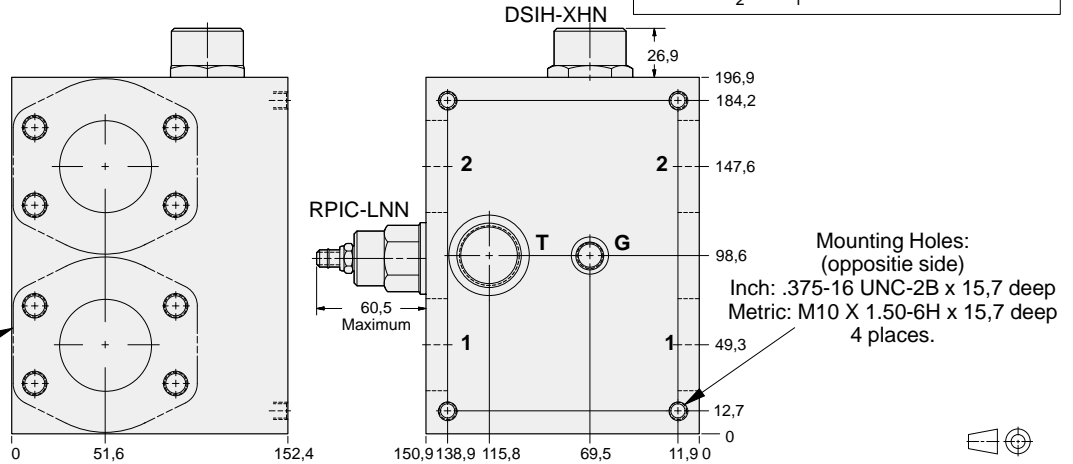
- Aluminium rated to 210 bar and SG Iron rated to 350 bar.
- Hot oil pressure can be confirmed and/or set with transmission in neutral.

Mounting Hole Dimensions	Ports 1 & 2	Port T	Gauge Port	ALUMINIUM		SG IRON	
				Port Code	List Price	Port Code	List Price
Inch	Code 61	SAE-16	SAE-6	S		S/S	
Metric	Code 61	1.00 BSPP	.25 BSPP	S/M		S/T	

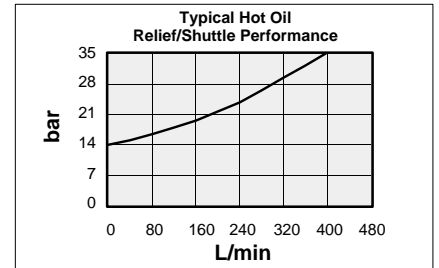


These SUN valve assemblies are for use in bleed-off of hot oil from the low pressure side of a hydrostatic transmission circuit. The hot oil can be cooled, filtered, or used as a source of oil for flushing other pump and motor cases. The hot oil is removed from the loop when the SUN RPIC cartridge is set below the hydrostatic charge pressure relief valve.

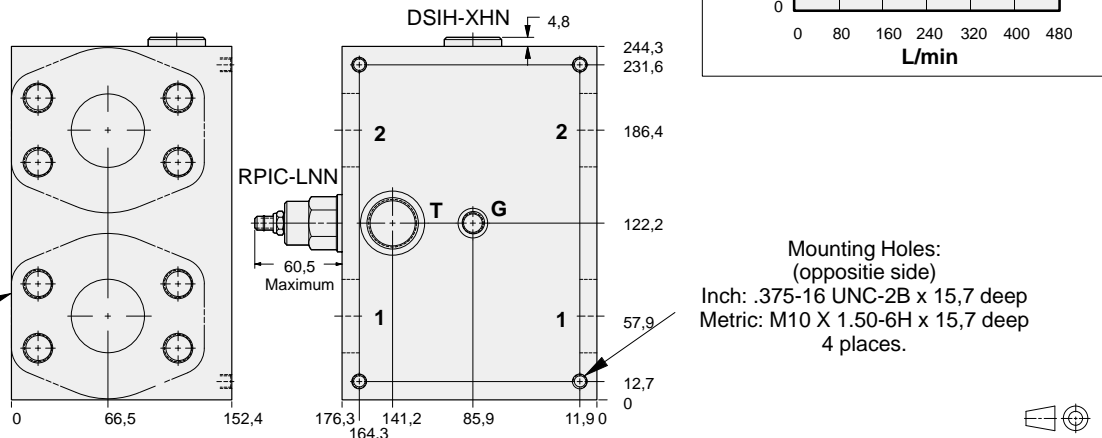
2.00" SAE Code 61
4-Bolt Flange Pattern
4 places.



Mounting Hole Dimensions	Ports 1 & 2	Port T	Gauge Port	ALUMINIUM		SG IRON	
				Port Code	List Price	Port Code	List Price
Inch	Code 62	SAE-16	SAE-6	8		8/S	
Metric	Code 62	1.00 BSPP	.25 BSPP	8/M		8/T	



2.00" SAE Code 62
4-Bolt Flange Pattern
4 places.



Mounting Holes:
(opposite side)
Inch: .375-16 UNC-2B x 15.7 deep
Metric: M10 X 1.50-6H x 15.7 deep
4 places.

OPTIONS

XRJC - LNN - A*

CARTRIDGE

RPIC Pg 1.07
For Viton Seals Change LNN to LNV.

Customer Specified Setting
Stamped on Hex

PORTS

See Chart
above