



HYDROSTATIC TRANSMISSION ASSEMBLY INLINE BODY

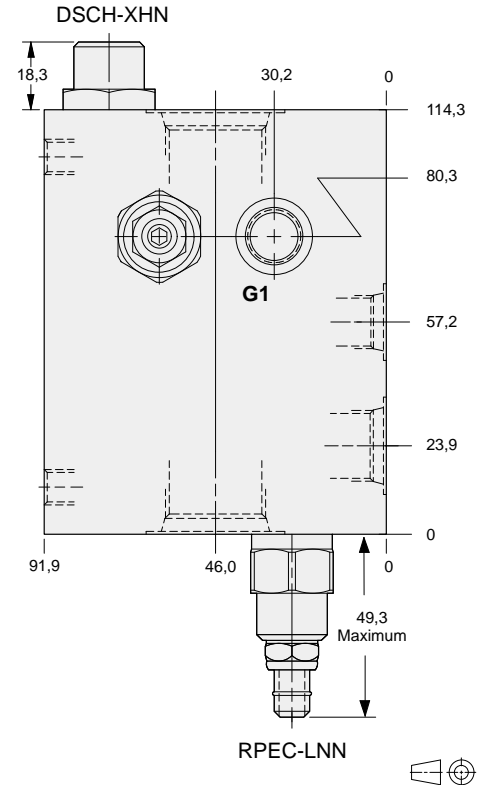
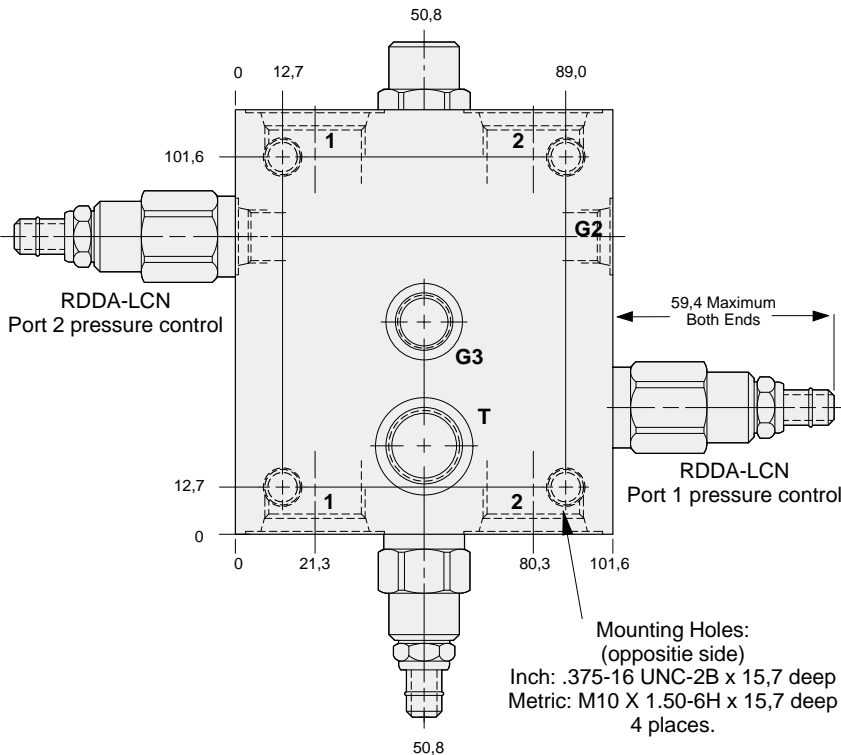
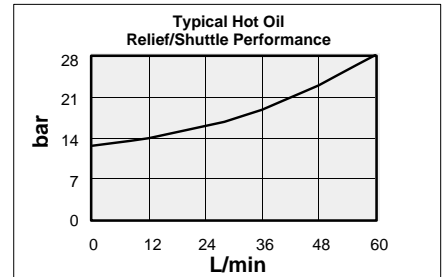
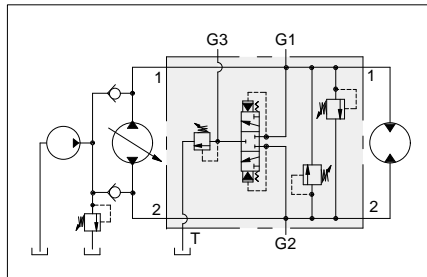


- Aluminium rated to 210 bar and SG Iron rated to 350 bar.
- Hot oil pressure can be confirmed and/or set with transmission in neutral.

These SUN valve assemblies are for use with hydrostatic transmissions to provide overload relief valve protection for the main circuit in both directions. Additionally, an auxiliary shuttle valve allows bleed-off of hot oil from the low pressure side. Hot oil can be cooled, filtered, or used as a source of oil for flushing other pump and motor cases. Hot oil is removed from the loop when the SUN RPEC cartridge is set below the hydrostatic charge pressure relief valve.

NOTE: A mechanical brake is recommended to positively lock any stopped live load.

Mounting Hole Dimensions	Ports 1 & 2	Port T	Ports G1, G2, & G3	ALUMINIUM		SG IRON	
				Port Code	List Price	Port Code	List Price
Inch	SAE-12	SAE-8	.25 NPTF	L		L/S	
Metric	.75 BSPP	.375 BSPP	.25 BSPP	W		W/S	



13

OPTIONS	XRDB - LCN - A*	
CARTRIDGE RDDA Pg 1.10 For Viton Seals Change LCN to LCV.	Customer Specified Setting Stamped on Hex	PORTS See Chart above

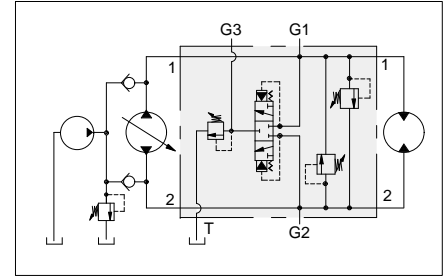


HYDROSTATIC TRANSMISSION ASSEMBLY .75" SAE FLANGE PORT BODY



- Aluminium rated to 210 bar and SG Iron rated to 350 bar.
- Hot oil pressure can be confirmed and/or set with transmission in neutral.

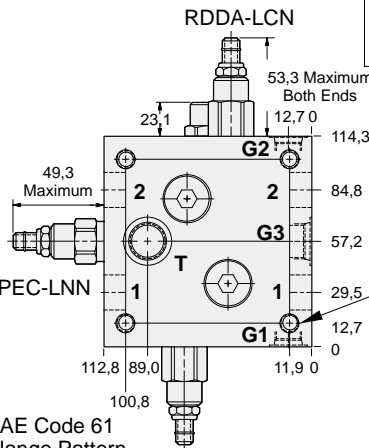
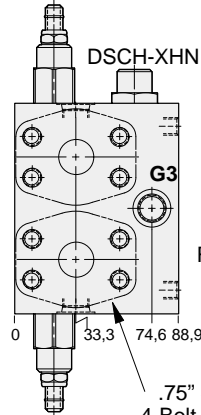
Mounting Hole Dimensions	Ports 1 & 2	Port T	Ports G1, G2, & G3	ALUMINIUM		SG IRON	
				Port Code	List Price	Port Code	List Price
Inch	Code 61	SAE-8	SAE-6	O		O/S	
Metric	Code 61	.375 BSPP	.25 BSPP	O/M		O/T	



These SUN valve assemblies are for use with hydrostatic transmissions to provide overload relief valve protection for the main circuit in both directions. Additionally, an auxiliary shuttle valve allows bleed-off of hot oil from the low pressure side. Hot oil can be cooled, filtered, or used as a source of oil for flushing other pump and motor cases. Hot oil is removed from the loop when the SUN RPEC cartridge is set below the hydrostatic charge pressure relief valve.

NOTE: A mechanical brake is recommended to positively lock any stopped live load.

RDDA-LCN
Port 1 pressure control



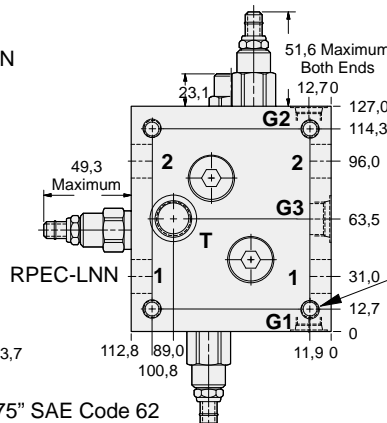
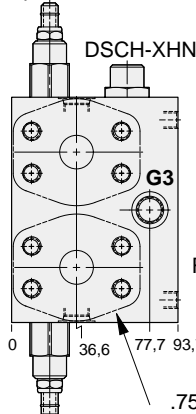
RDDA-LCN
Port 2 pressure control

.75" SAE Code 61
4-Bolt Flange Pattern
4 places.

Mounting Holes:
(opposite side)
Inch: .375-16 UNC-2B x 19,0 deep
Metric: M10 X 1.50-6H x 19,0 deep
4 places.

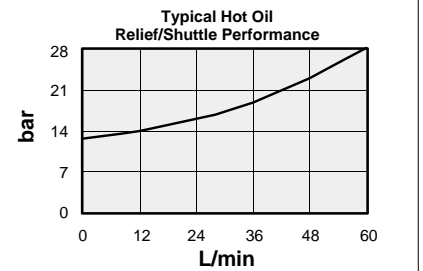
Mounting Hole Dimensions	Ports 1 & 2	Port T	Ports G1, G2, & G3	ALUMINIUM		SG IRON	
				Port Code	List Price	Port Code	List Price
Inch	Code 62	SAE-8	SAE-6	3		3/S	
Metric	Code 62	.375 BSPP	.25 BSPP	3/M		3/T	

RDDA-LCN
Port 1 pressure control



RDDA-LCN
Port 2 pressure control

.75" SAE Code 62
4-Bolt Flange Pattern
2 places.



Mounting Holes:
(opposite side)
Inch: .375-16 UNC-2B x 19,0 deep
Metric: M10 X 1.50-6H x 19,0 deep
4 places.

OPTIONS	XRDB - LCN - A*	
	CARTRIDGE RDDA Pg 1.10 For Viton Seals Change LCN to LCV.	PORTS Customer Specified Setting Stamped on Hex See Chart above



HYDROSTATIC TRANSMISSION ASSEMBLY INLINE BODY

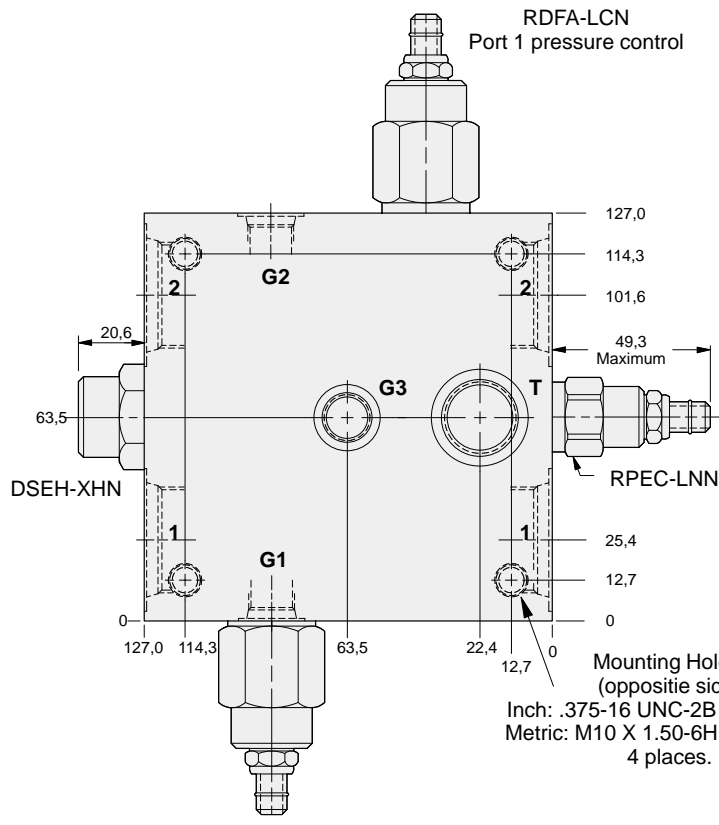
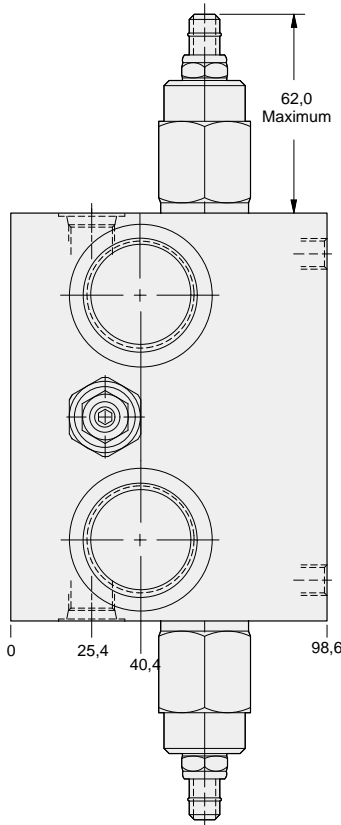
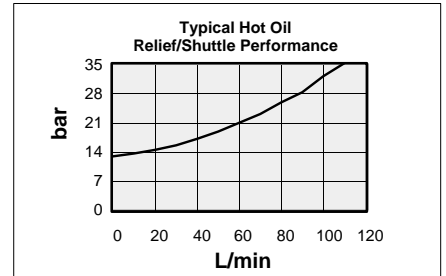
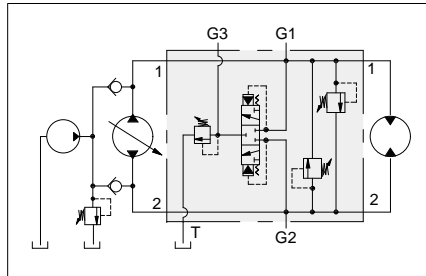


- Aluminium rated to 210 bar and SG Iron rated to 350 bar.
- Hot oil pressure can be confirmed and/or set with transmission in neutral.

These SUN valve assemblies are for use with hydrostatic transmissions to provide overload relief valve protection for the main circuit in both directions. Additionally, an auxiliary shuttle valve allows bleed-off of hot oil from the low pressure side. Hot oil can be cooled, filtered, or used as a source of oil for flushing other pump and motor cases. Hot oil is removed from the loop when the SUN RPEC cartridge is set below the hydrostatic charge pressure relief valve.

NOTE: A mechanical brake is recommended to positively lock any stopped live load.

Mounting Hole Dimensions	Ports 1 & 2	Port T	Ports G1, G2, & G3	ALUMINIUM		SG IRON	
				Port Code	List Price	Port Code	List Price
Inch	SAE-16	SAE-10	SAE-6	M		M/S	
Metric	1.00 BSPP	.50 BSPP	.25 BSPP	X		X/S	



RDFA-LCN
Port 1 pressure control

RDFA-LCN
Port 2 pressure control

Mounting Holes:
(opposite side)
Inch: .375-16 UNC-2B x 15,7 deep
Metric: M10 X 1.50-6H x 15,7 deep
4 places.

OPTIONS

XRFB - LCN - A*

CARTRIDGE

RDFA Pg 1.10
For Viton Seals Change LCN to LCV.

Customer Specified Setting
Stamped on Hex

PORTS

See Chart above

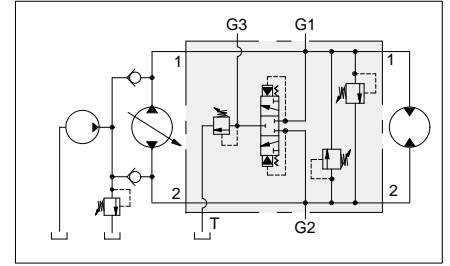


HYDROSTATIC TRANSMISSION ASSEMBLY 1.00" SAE FLANGE PORT BODY



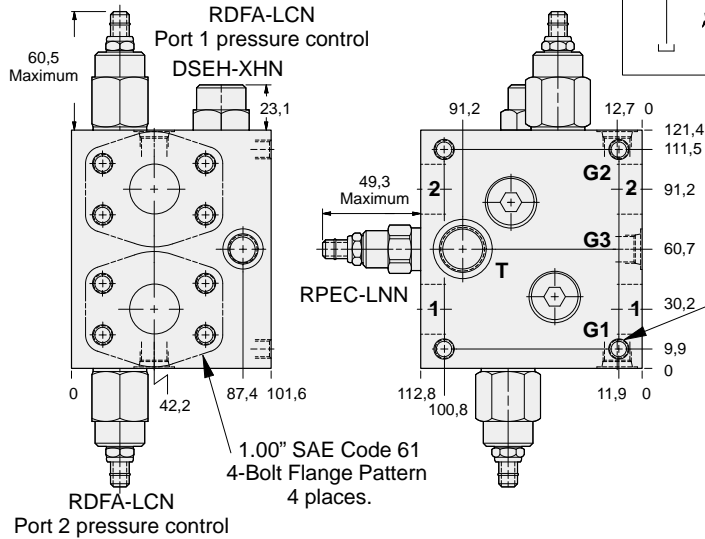
- Aluminium rated to 210 bar and SG Iron rated to 350 bar.
- Hot oil pressure can be confirmed and/or set with transmission in neutral.

Mounting Hole Dimensions	Ports 1 & 2	Port T	Ports G1, G2, & G3	ALUMINIUM		SG IRON	
				Port Code	List Price	Port Code	List Price
Inch	Code 61	SAE-10	SAE-6	P		P/S	
Metric	Code 61	.50 BSPP	.25 BSPP	P/M		P/T	



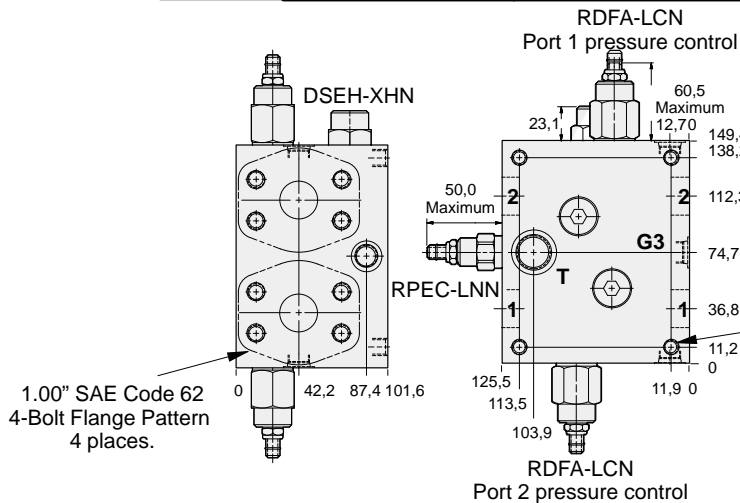
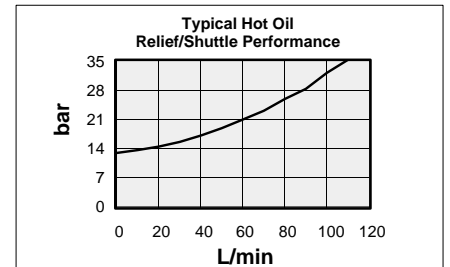
These SUN valve assemblies are for use with hydrostatic transmissions to provide overload relief valve protection for the main circuit in both directions. Additionally, an auxiliary shuttle valve allows bleed-off of hot oil from the low pressure side. Hot oil can be cooled, filtered, or used as a source of oil for flushing other pump and motor cases. Hot oil is removed from the loop when the SUN RPEC cartridge is set below the hydrostatic charge pressure relief valve.

NOTE: A mechanical brake is recommended to positively lock any stopped live load.



Mounting Holes:
(opposite side)
Inch: .375-16 UNC-2B x 19,0 deep
Metric: M10 X 1.50-6H x 19,0 deep
4 places.

Mounting Hole Dimensions	Ports 1 & 2	Port T	Ports G1, G2, & G3	ALUMINIUM		SG IRON	
				Port Code	List Price	Port Code	List Price
Inch	Code 62	SAE-10	SAE-6	4		4/S	
Metric	Code 62	.50 BSPP	.25 BSPP	4/M		4/T	



Mounting Holes:
(opposite side)
Inch: .438-14 UNC-2B x 26,9 deep
Metric: M12 x 1.75-6H x 26,9 deep
4 places.

OPTIONS	XRFB - LCN - A*		
	CARTRIDGE	PORTS	
	RDFA Pg 1.10 For Viton Seals Change LCN to LCV.	Customer Specified Setting Stamped on Hex	See Chart above



HYDROSTATIC TRANSMISSION ASSEMBLY 1.25" SAE CODE 61 FLANGE PORT BODY

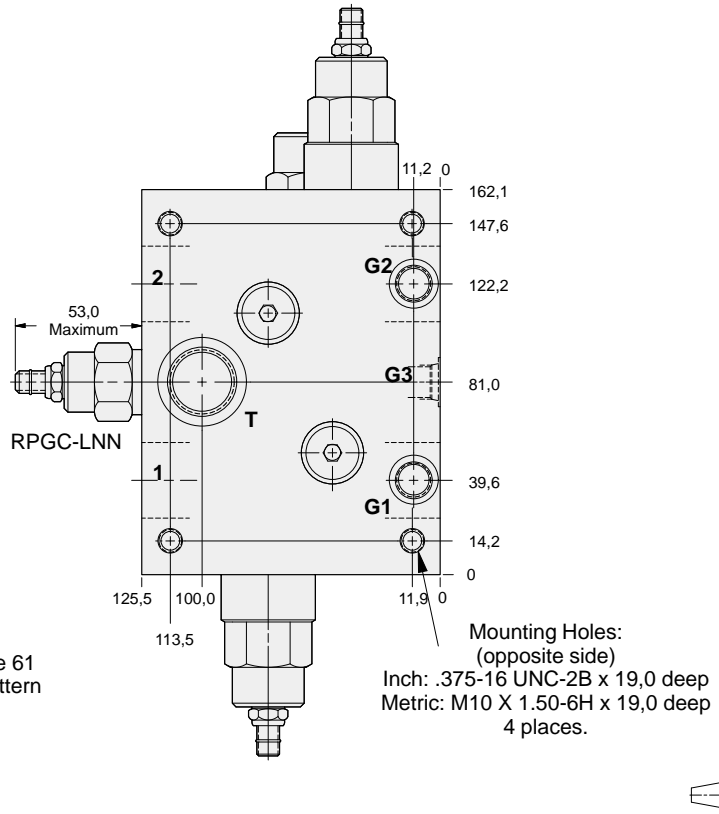
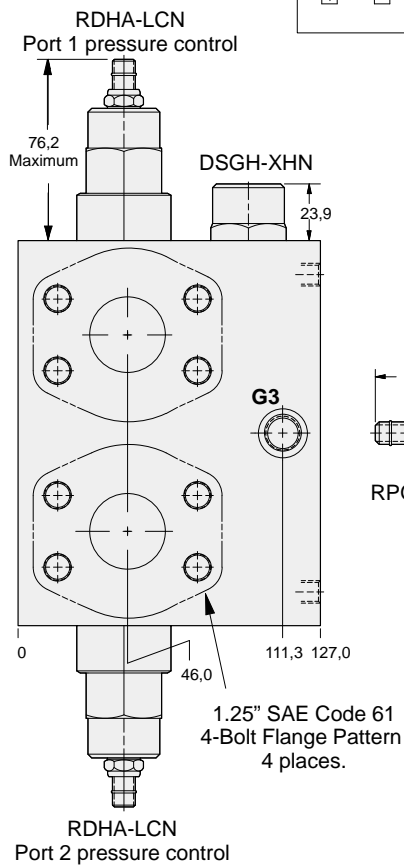
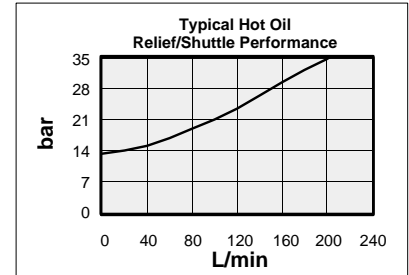
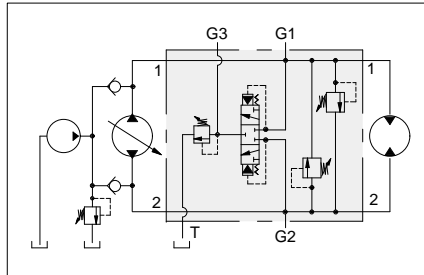


- Aluminium rated to 210 bar and SG Iron rated to 350 bar.
- Hot oil pressure can be confirmed and/or set with transmission in neutral.

These SUN valve assemblies are for use with hydrostatic transmissions to provide overload relief valve protection for the main circuit in both directions. Additionally, an auxiliary shuttle valve allows bleed-off of hot oil from the low pressure side. Hot oil can be cooled, filtered, or used as a source of oil for flushing other pump and motor cases. Hot oil is removed from the loop when the SUN RPGC cartridge is set below the hydrostatic charge pressure relief valve.

NOTE: A mechanical brake is recommended to positively lock any stopped live load.

Mounting Hole Dimensions	Port T	Ports G1, G2, & G3	ALUMINIUM		SG IRON	
			Port Code	List Price	Port Code	List Price
Inch	SAE-12	SAE-6	Q		Q/S	
Metric	.75 BSPP	.25 BSPP	Q/M		Q/T	



13

OPTIONS

XRHB - LCN - A*

CARTRIDGE

RDHA Pg 1.11
For Viton Seals Change LCN to LCV.

Customer Specified Setting
Stamped on Hex

PORTS

See Chart above



HYDROSTATIC TRANSMISSION ASSEMBLY 1.25" SAE CODE 62 FLANGE PORT BODY

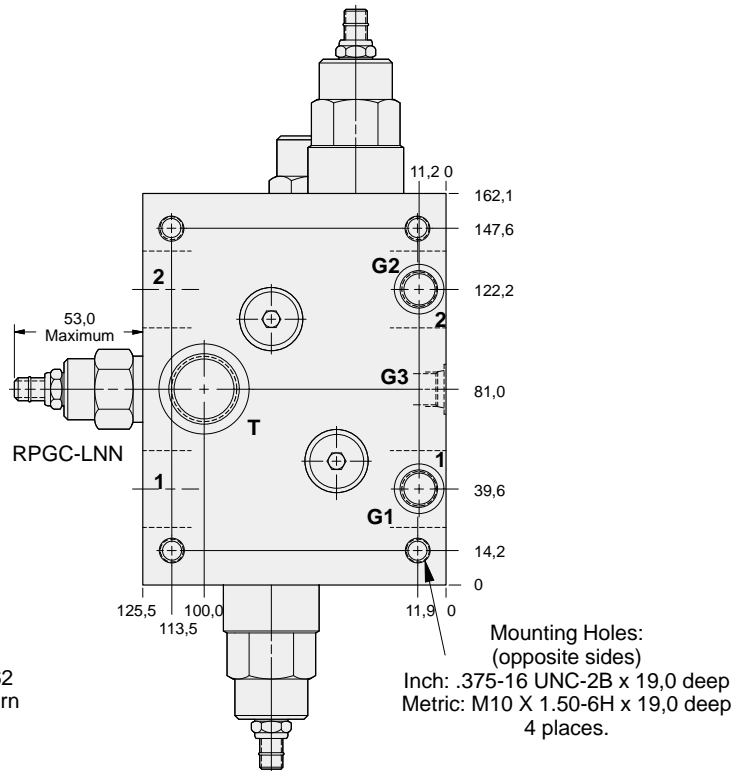
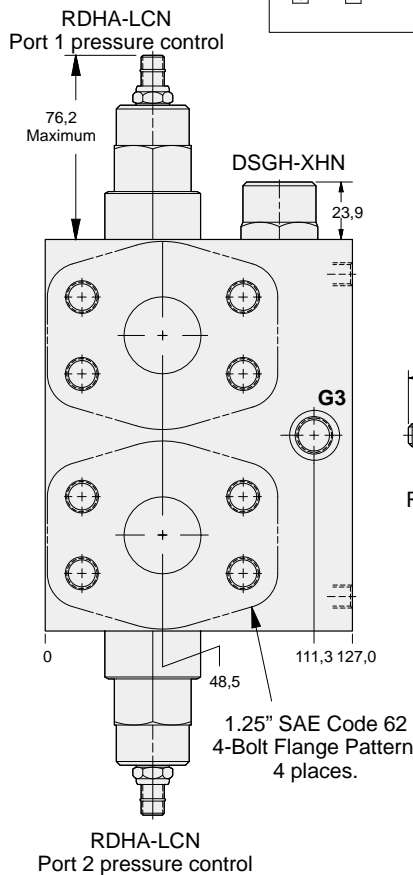
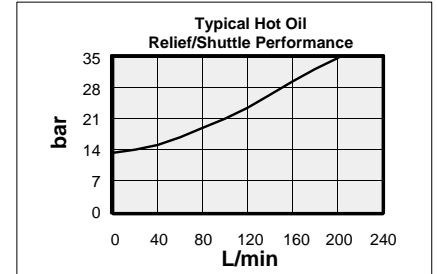
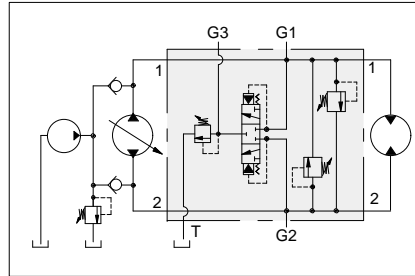


- Aluminium rated to 210 bar and SG Iron rated to 350 bar.
- Hot oil pressure can be confirmed and/or set with transmission in neutral.

These SUN valve assemblies are for use with hydrostatic transmissions to provide overload relief valve protection for the main circuit in both directions. Additionally, an auxiliary shuttle valve allows bleed-off of hot oil from the low pressure side. Hot oil can be cooled, filtered, or used as a source of oil for flushing other pump and motor cases. Hot oil is removed from the loop when the SUN RPGC cartridge is set below the hydrostatic charge pressure relief valve.

NOTE: A mechanical brake is recommended to positively lock any stopped live load.

Mounting Hole Dimensions	Port T	Ports G1, G2, & G3	ALUMINIUM		SG IRON	
			Port Code	List Price	Port Code	List Price
Inch	SAE-12	SAE-6	5		5/S	
Metric	.75 BSPP	.25 BSPP	5/M		5/T	



OPTIONS	XRHB - LCN - A*						
<table border="1" style="width: 100%; border-collapse: collapse;"> <tr> <td style="width: 60%; padding: 5px;">CARTRIDGE</td> <td style="width: 40%; padding: 5px;">PORTS</td> </tr> <tr> <td style="padding: 5px;">RDHA Pg 1.11 For Viton Seals Change LCN to LCV.</td> <td style="padding: 5px;">Customer Specified Setting Stamped on Hex</td> </tr> <tr> <td></td> <td style="padding: 5px;">See Chart above</td> </tr> </table>	CARTRIDGE	PORTS	RDHA Pg 1.11 For Viton Seals Change LCN to LCV.	Customer Specified Setting Stamped on Hex		See Chart above	
CARTRIDGE	PORTS						
RDHA Pg 1.11 For Viton Seals Change LCN to LCV.	Customer Specified Setting Stamped on Hex						
	See Chart above						

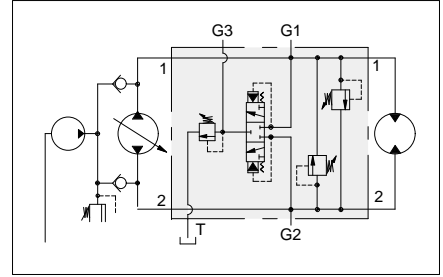


HYDROSTATIC TRANSMISSION ASSEMBLY 1.50" SAE FLANGE PORT BODY



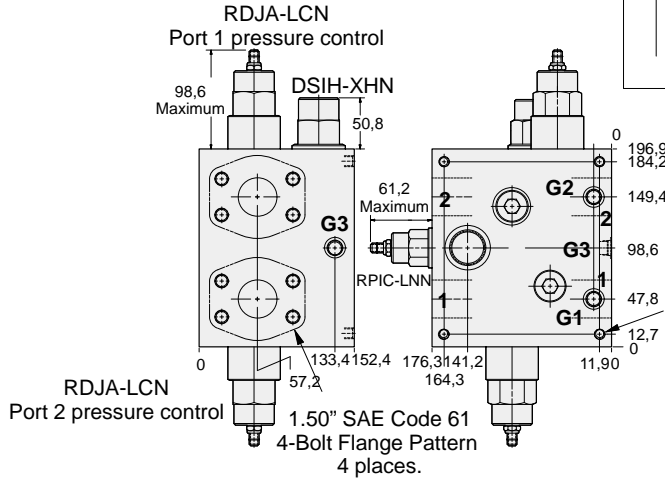
- Aluminium rated to 210 bar and SG Iron rated to 350 bar.
- Hot oil pressure can be confirmed and/or set with transmission in neutral.

Mounting Hole Dimensions	Ports 1 & 2	Port T	Ports G1, G2, & G3	ALUMINIUM		SG IRON	
				Port Code	List Price	Port Code	List Price
Inch	Code 61	SAE-16	SAE-6	R		R/S	
Metric	Code 61	1.00 BSPP	.25 BSPP	R/M		R/T	



These SUN valve assemblies are for use with hydrostatic transmissions to provide overload relief valve protection for the main circuit in both directions. Additionally, an auxiliary shuttle valve allows bleed-off of hot oil from the low pressure side. Hot oil can be cooled, filtered, or used as a source of oil for flushing other pump and motor cases. Hot oil is removed from the loop when the SUN RPIC cartridge is set below the hydrostatic charge pressure relief valve.

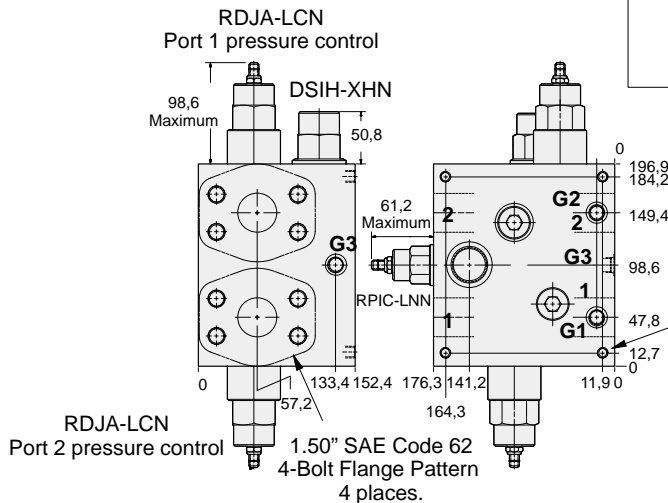
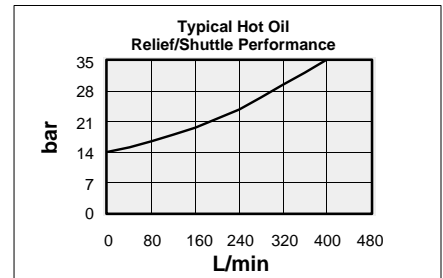
NOTE: A mechanical brake is recommended to positively lock any stopped live load.



Mounting Holes:
(opposite side)
Inch: .375-16 UNC-2B x 22,4 deep
Metric: M10 X 1.50-6H x 22,4 deep
4 places.



Mounting Hole Dimensions	Ports 1 & 2	Port T	Ports G1, G2, & G3	ALUMINIUM		SG IRON	
				Port Code	List Price	Port Code	List Price
Inch	Code 62	SAE-16	SAE-6	6		6/S	
Metric	Code 62	1.00 BSPP	.25 BSPP	6/M		6/T	



Mounting Holes:
(opposite side)
Inch: .375-16 UNC-2B x 22,4 deep
Metric: M10 X 1.50-6H x 22,4 deep
4 places.



OPTIONS

XRJB - LCN - A*

CARTRIDGE

RDJA Pg 1.11
For Viton Seals Change LCN to LCV.

Customer Specified Setting
Stamped on Hex

PORTS

See Chart above

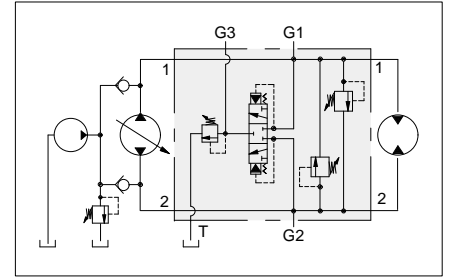


HYDROSTATIC TRANSMISSION ASSEMBLY 2.00" SAE FLANGE PORT BODY



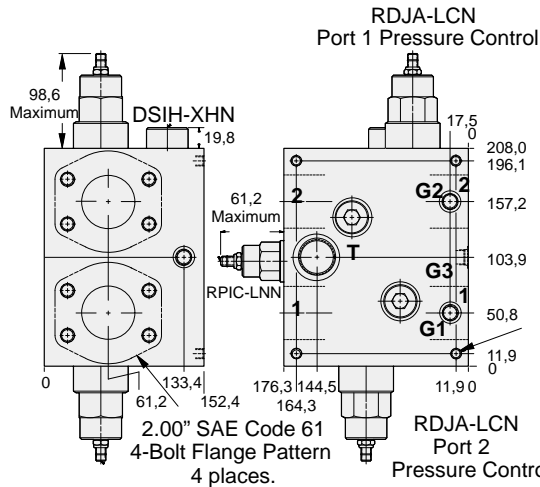
- Aluminium rated to 210 bar and SG Iron rated to 350 bar.
- Hot oil pressure can be confirmed and/or set with transmission in neutral.

Mounting Hole Dimensions	Ports 1 & 2	Port T	Ports G1, G2, & G3	ALUMINIUM		SG IRON	
				Port Code	List Price	Port Code	List Price
Inch	Code 61	SAE-16	SAE-6	S		S/S	
Metric	Code 61	1.00 BSPP	.25 BSPP	S/M		S/T	



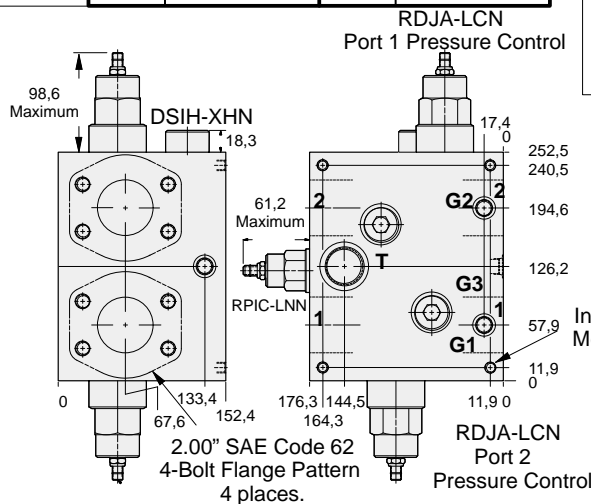
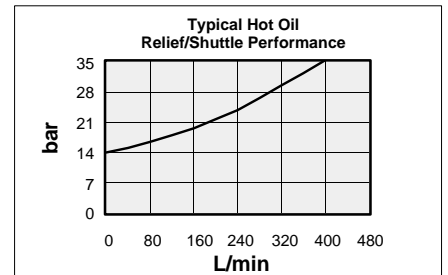
These SUN valve assemblies are for use with hydrostatic transmissions to provide overload relief valve protection for the main circuit in both directions. Additionally, an auxiliary shuttle valve allows bleed-off of hot oil from the low pressure side. Hot oil can be cooled, filtered, or used as a source of oil for flushing other pump and motor cases. Hot oil is removed from the loop when the SUN RPIC cartridge is set below the hydrostatic charge pressure relief valve.

NOTE: A mechanical brake is recommended to positively lock any stopped live load.



Mounting Holes:
(opposite side)
Inch: .375-16 UNC-2B x 22,4 deep
Metric: M10 X 1.50-6H x 22,4 deep
4 places.

Mounting Hole Dimensions	Ports 1 & 2	Port T	Ports G1, G2, & G3	ALUMINIUM		SG IRON	
				Port Code	List Price	Port Code	List Price
Inch	Code 62	SAE-16	SAE-6	8		8/S	
Metric	Code 62	1.00 BSPP	.25 BSPP	8/M		8/T	



Mounting Holes:
(opposite side)
Inch: .375-16 UNC-2B x 22,4 deep
Metric: M10 X 1.50-6H x 22,4 deep
4 places.

OPTIONS		XRJB - LCN - A*	
CARTRIDGE	RDJA Pg 1.11 For Viton Seals Change LCN to LCV.	Customer Specified Setting Stamped on Hex	PORTS See Chart above