



# PUMP CIRCUIT CONTROL ASSEMBLY SUITABLE FOR RESERVIOR MOUNTING FOR USE WITH MULTIPLE PUMP CIRCUITS

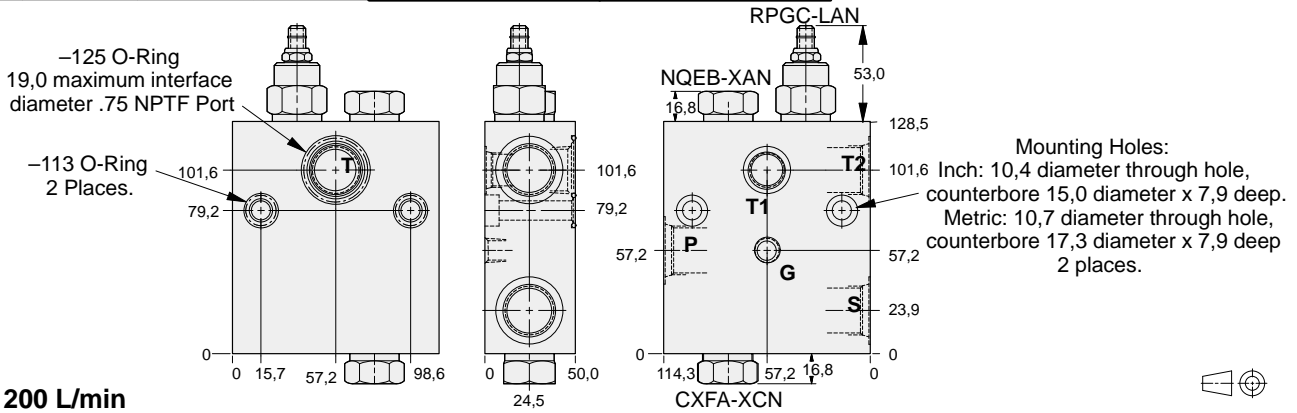


- Aluminium rated to 210 bar and SG Iron rated to 350 bar.

## YFRC: 95 L/min

Mounting Hole Dimensions	Port P, S, & T2	Port T1	Gauge Port	ALUMINIUM		SG IRON	
				Port Code	List Price	Port Code	List Price
Inch	.75 NPTF	.50 NPTF	.25 NPTF	D		D/S	
Inch	SAE-12	SAE-8	.25 NPTF	L		L/S	
Metric	.75 BSPP	.50 BSPP	.25 BSPP	W		W/S	

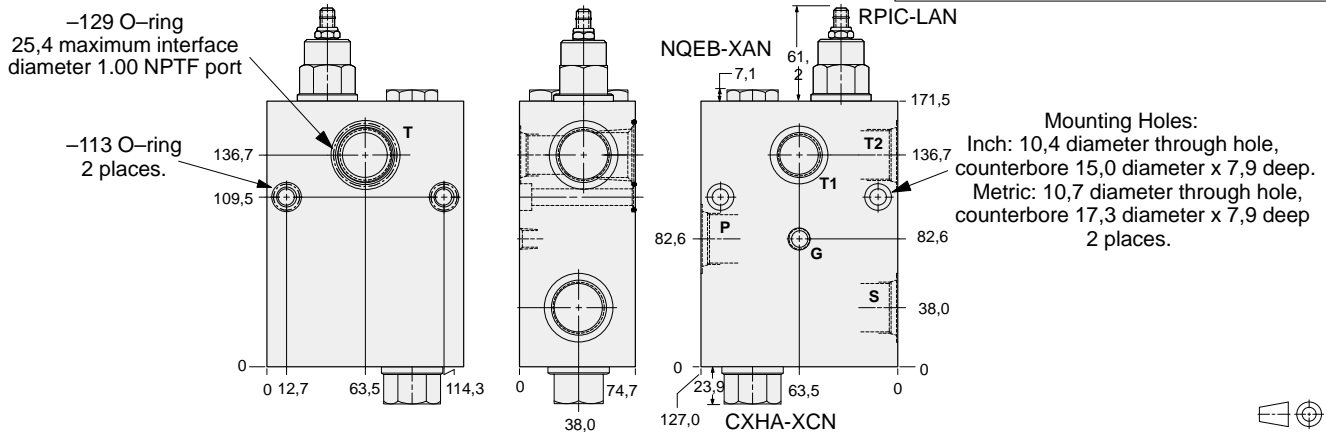
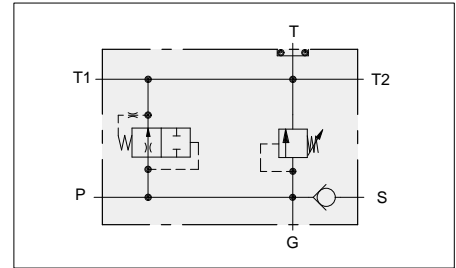
YFRC and YFRE valves are suitable for multiple pump circuits when connected directly to each pump in the system. They provide air-bleed and relief protection for each pump and the check valve position isolates the other pumps from the valve assembly.



Mounting Holes:  
Inch: 10,4 diameter through hole, counterbore 15,0 diameter x 7,9 deep.  
Metric: 10,7 diameter through hole, counterbore 17,3 diameter x 7,9 deep 2 places.

## YFRE: 200 L/min

Mounting Hole Dimensions	Port P, S, & T2	Port T1	Gauge Port	ALUMINIUM		SG IRON	
				Port Code	List Price	Port Code	List Price
Inch	1.00 NPTF	.75 NPTF	.25 NPTF	E		E/S	
Inch	SAE-16	SAE-12	.25 NPTF	M		M/S	
Metric	1.00 BSPP	.75 BSPP	.25 BSPP	X		X/S	



Mounting Holes:  
Inch: 10,4 diameter through hole, counterbore 15,0 diameter x 7,9 deep.  
Metric: 10,7 diameter through hole, counterbore 17,3 diameter x 7,9 deep 2 places.

13

## OPTIONS

### YFR\* - LAN - A\*

#### FLOW CAPABILITY

**C** 95 L/min  
RPGC Cartridge

**E** 200 L/min  
RPIC Cartridge

Customer Specified Setting  
Stamped on Hex

For Viton Seals Change  
LAN to LAV.

For Viton Seals Change  
LAN to LAV.

#### PORTS

See Chart  
above



# PUMP CIRCUIT CONTROL ASSEMBLY SUITABLE FOR RESERVIOR MOUNTING FOR USE WITH SINGLE PUMP CIRCUITS

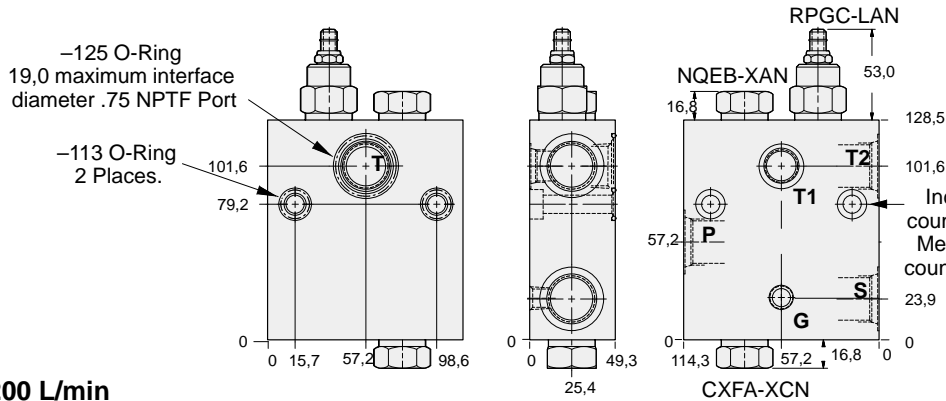


- Aluminium rated to 210 bar and SG Iron rated to 350 bar.

## YFRD: 95 L/min

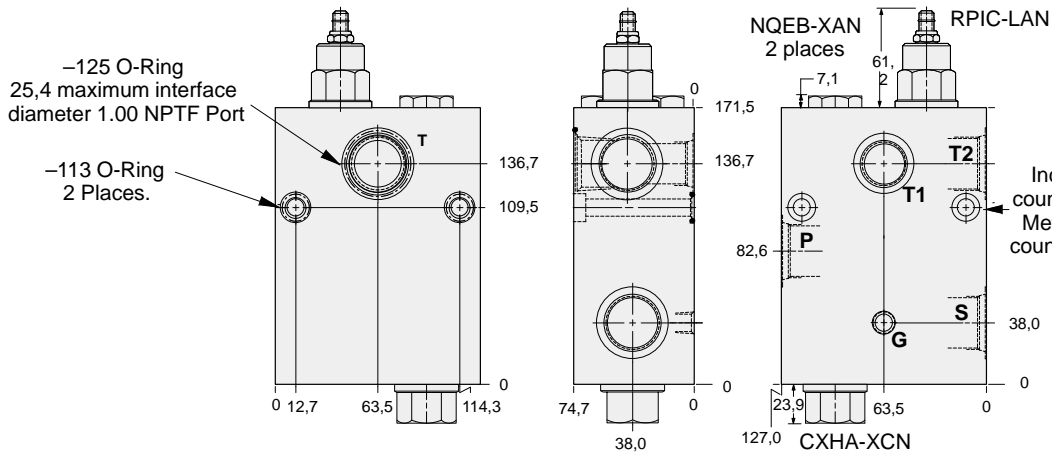
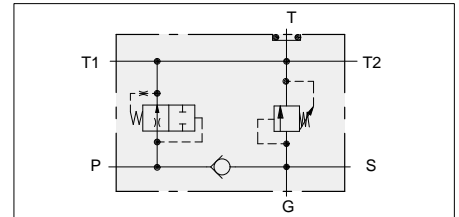
Mounting Hole Dimensions	Port P, S, & T2	Port T1	Gauge Port	ALUMINIUM		SG IRON	
				Port Code	List Price	Port Code	List Price
Inch	.75 NPTF	.50 NPTF	.25 NPTF	D		D/S	
Inch	SAE-12	SAE-8	.25 NPTF	L		L/S	
Metric	.75 BSPP	.50 BSPP	.25 BSPP	W		W/S	

The SUN pump circuit manifold contains an air-bleed and start up valve, main system relief, and a check valve for use with any basic power unit. O-ring seals for one of the tank ports and bolt mounting holes are provided for direct reservoir mounting. All T ports are also threaded.



## YFRF: 200 L/min

Mounting Hole Dimensions	Port P, S, & T2	Port T1	Gauge Port	ALUMINIUM		SG IRON	
				Port Code	List Price	Port Code	List Price
Inch	1.00 NPTF	.75 NPTF	.25 NPTF	E		E/S	
Inch	SAE-16	SAE-12	.25 NPTF	M		M/S	
Metric	1.00 BSPP	.75 BSPP	.25 BSPP	X		X/S	



Mounting Holes:  
Inch: 10,4 diameter through hole, counterbore 15,0 diameter x 7,9 deep.  
Metric: 10,7 diameter through hole, counterbore 17,3 diameter x 7,9 deep 2 places.

OPTIONS	YFR* - LAN A*	PORTS
Customer Specified Setting Stamped on Hex	<p><b>FLOW CAPABILITY</b></p> <p><b>D</b> 95 L/min RPGC Cartridge</p> <p><b>F</b> 200 L/min RPIC Cartridge</p>	<p>For Viton Seals Change LAN to LAV.</p> <p>For Viton Seals Change LAN to LAV.</p> <p>See Chart above</p>