



PRESSURE-COMPENSATED PRIORITY FLOW CONTROL ASSEMBLY WITH RELIEF ON CONTROLLED FLOW PORT

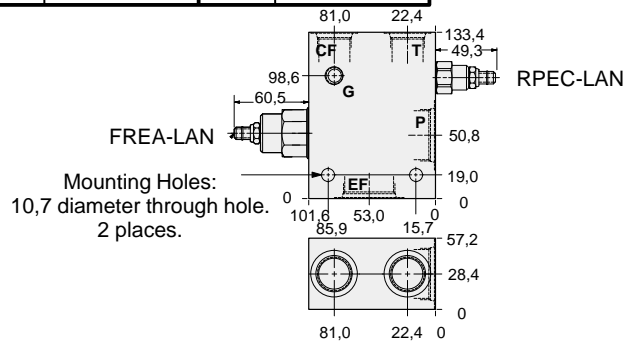
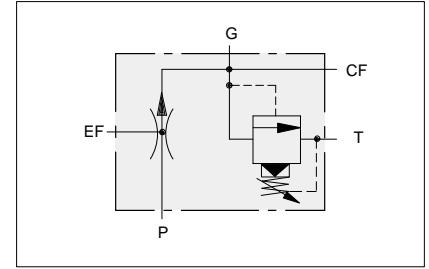


Customer Must Specify Flow ⊗

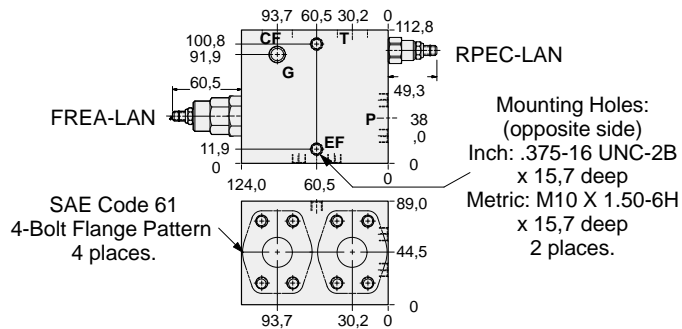
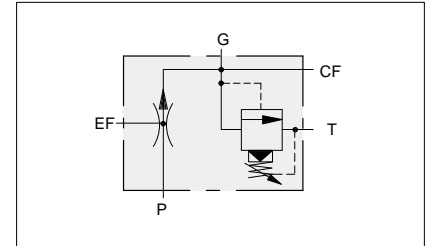
- Aluminium rated to 210 bar and SG Iron rated to 350 bar.

YRFF: Up to 95 L/min Priority Flow.

Ports EF & P	Ports CF & T	Gauge Port	ALUMINIUM		SG IRON	
			Port Code	List Price	Port Code	List Price
.75 NPTF	.75 NPTF	.25 NPTF	D		D/S	
1.00 NPTF	.75 NPTF	.25 NPTF	E		E/S	
1.25 NPTF	.75 NPTF	.25 NPTF	F		F/S	
SAE-12	SAE-12	.25 NPTF	L		L/S	
SAE-16	SAE-12	.25 NPTF	M		M/S	
SAE-20	SAE-12	.25 NPTF	N		N/S	
.75 BSPP	.75 BSPP	.25 BSPP	W		W/S	
1.00 BSPP	.75 BSPP	.25 BSPP	X		X/S	
1.25 BSPP	.75 BSPP	.25 BSPP	Y		Y/S	



Mounting Hole Dimensions	Ports EF & P Code 61	Ports CF & T Code 61	Gauge Port	ALUMINIUM		SG IRON	
				Port Code	List Price	Port Code	List Price
Inch	1.00"	1.00"	.25 NPTF	P		P/S	
Metric	1.00"	1.00"	.25 BSPP	P/M		P/T	
Inch	1.25"	1.00"	.25 NPTF	Q		Q/S	
Metric	1.25"	1.00"	.25 BSPP	Q/M		Q/T	



OPTIONS		YRFF - LAN - * *	
L Tuning Adjust	X Non-adjustable	For Viton Seals Change LAN to LAV.	Customer Specified Setting Stamped on Hex
			⊗ Customer must specify flow. 0,8 to 95 L/min
FLOW ADJUSTMENT		PORTS	
		See Chart above	



PRESSURE-COMPENSATED PRIORITY FLOW CONTROL ASSEMBLY WITH RELIEF ON CONTROLLED FLOW PORT

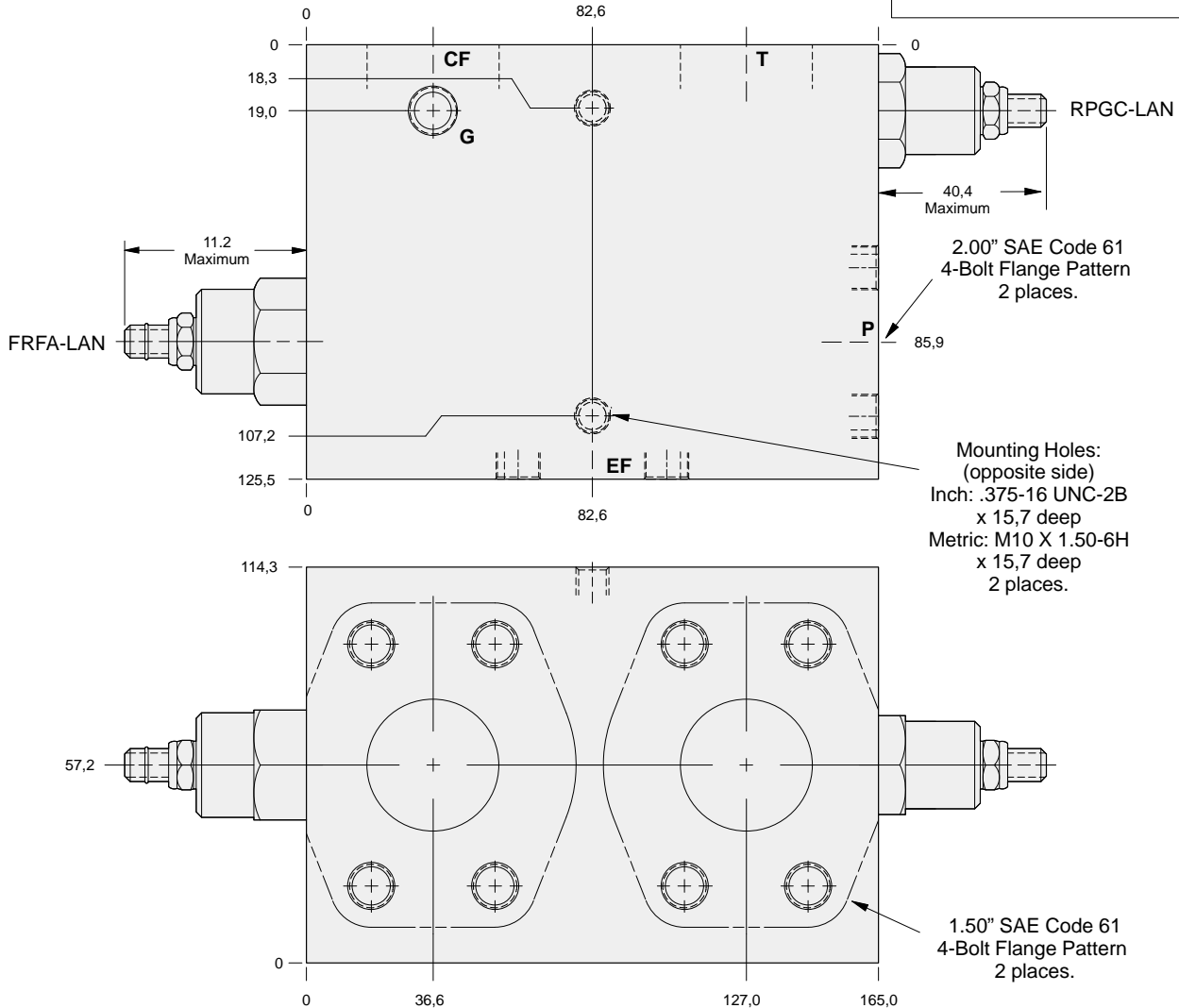
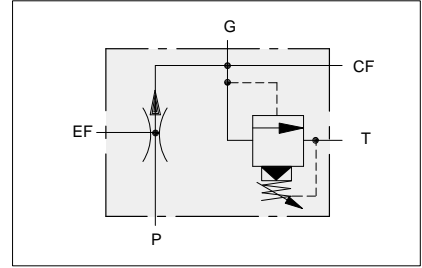


Customer Must Specify Flow ⊗

- Aluminium rated to 210 bar and SG Iron rated to 350 bar.

YRHF: Up to 200 L/min Priority Flow.

Mounting Hole Dimensions	Ports EF & P Code 61	Ports CF & T Code 61	Gauge Port	ALUMINIUM		SG IRON	
				Port Code	List Price	Port Code	List Price
Inch	2.00"	1.50"	.25 NPTF	S		S/S	
Metric	2.00"	1.50"	.25 BSPP	S/M		S/T	



13

OPTIONS

YRHF - LAN - * *

FLOW ADJUSTMENT

- L** Tuning Adjust
- X** Non-adjustable

For Viton Seals Change LAN to LAV.

Customer Specified Setting Stamped on Hex

PORTS

See Chart above

⊗ *Customer must specify flow. 0,8 to 200 L/min*