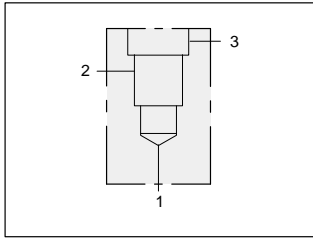




LINE MOUNT BODIES



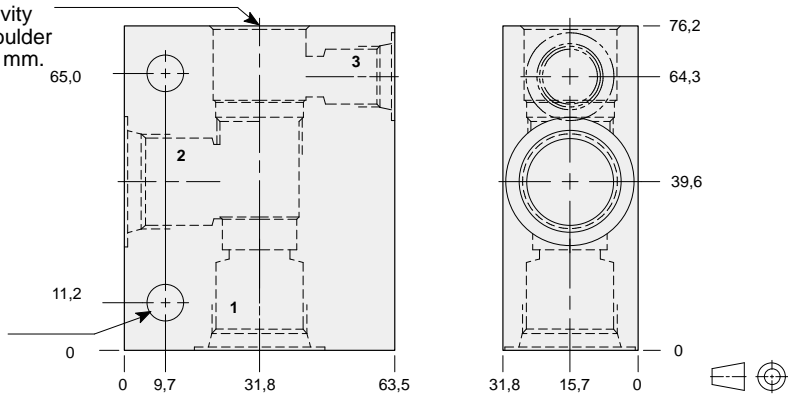
- Aluminium rated to 210 bar and SG Iron rated to 350 bar.



90 degree body.

T-11A Cavity
Locating Shoulder
Depth 17,5 mm.

Mounting Holes:
8,6 mm. diameter
through hole
2 places.

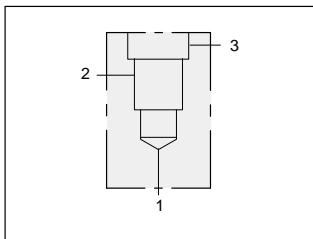


TYPICAL CARTRIDGES USED WITH THIS BODY

RBAD - ***	Page	1.17
RVCA - ***	Page	1.18
RSDC - ***	Page	2.06
SQDB - ***	Page	2.08
SCCA - ***	Page	2.12
PBDB - ***	Page	3.06
CBCA - ***	Page	4.10
CBCG - ***	Page	4.12
CBCH - ***	Page	4.14
CKCB - ***	Page	4.16
LODC - ***	Page	9.08
LKDC - ***	Page	9.10
LPDC - ***	Page	9.12
LRDC - ***	Page	9.14
CSAB - ***	Page	10.08
CDAB - ***	Page	10.10
CODA - ***	Page	10.12

Instructions for ordering complete cartridge and body assemblies. Page viii
Pressure ratings, material specifications. Page 11.02

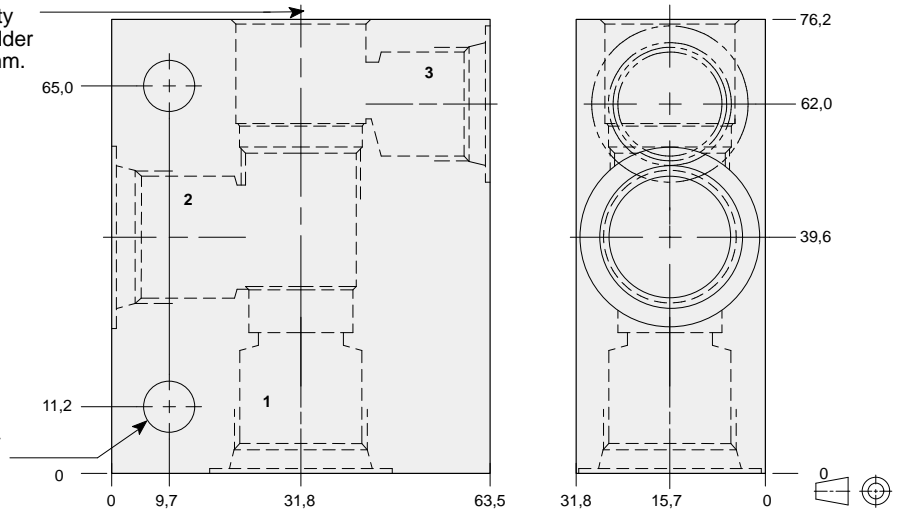
Ports 1 & 2	Port 3	ALUMINIUM		SG IRON	
		Model Code	List Price	Model Code	List Price
.25 NPTF	.25 NPTF	ECA		ECA/S	
.375 NPTF	.25 NPTF	ECB		ECB/S	
.50 NPTF	.25 NPTF	ECC		ECC/S	
SAE-4	SAE-4	ECH		ECH/S	
SAE-6	SAE-6	ECI		ECI/S	
SAE-8	SAE-6	ECJ		ECJ/S	
SAE-10	SAE-6	ECK		ECK/S	
.25 BSPP	.25 BSPP	ECT		ECT/S	
.375 BSPP	.25 BSPP	ECU		ECU/S	
.50 BSPP	.25 BSPP	ECV		ECV/S	



90 degree body with high capacity port 3.

T-11A Cavity
Locating Shoulder
Depth 17,5 mm.

Mounting Holes:
8,6 mm. diameter
through hole
2 places.



TYPICAL CARTRIDGES USED WITH THIS BODY

PPDB - ***	Page	3.10
FRCA - ***	Page	6.02
DPBA - ***	Page	8.06
DPBB - ***	Page	8.07
DPBC - ***	Page	8.08
DPBD - ***	Page	8.09

Instructions for ordering complete cartridge and body assemblies. Page viii
Pressure ratings, material specifications. Page 11.02

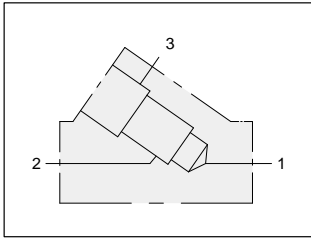
Mounting Hole Dimensions	Port 3	ALUMINIUM		SG IRON	
		Model Code	List Price	Model Code	List Price
.375 NPTF	.375 NPTF	EAB		EAB/S	
.50 NPTF	.375 BSPP	EAC		EAC/S	
SAE-8	SAE-8	EAJ		EAJ/S	
SAE-10	SAE-8	EAK		EAK/S	
.375 BSPP	.375 BSPP	EAU		EAU/S	
.50 BSPP	.375 BSPP	EAV		EAV/S	



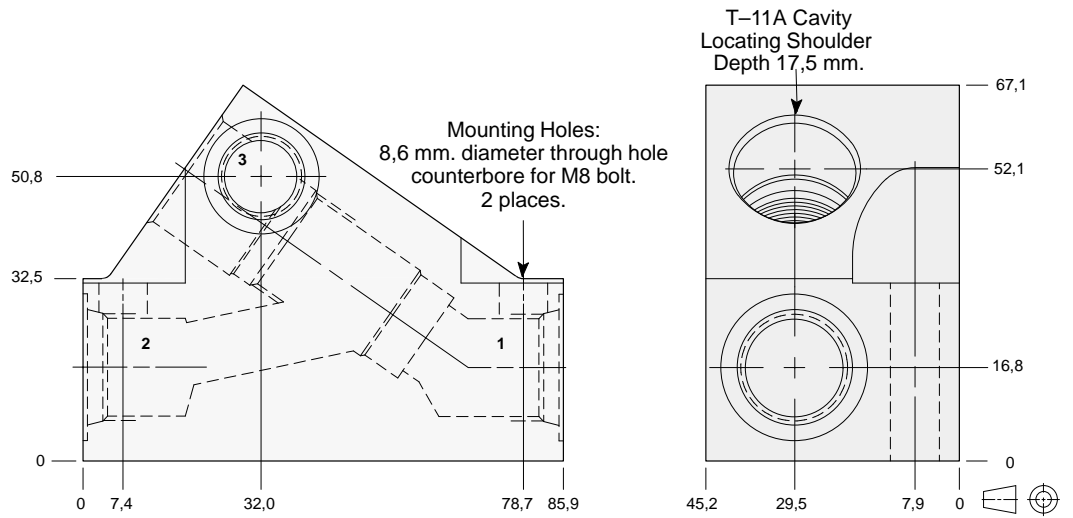
LINE MOUNT BODIES



- Aluminium rated to 210 bar and SG Iron rated to 350 bar.



Inline body.



TYPICAL CARTRIDGES USED WITH THIS BODY

RBAD - ***	Page	1.17
RVCA - ***	Page	1.18
RSDC - ***	Page	2.06
SQDB - ***	Page	2.08
SCCA - ***	Page	2.12
PBDB - ***	Page	3.06
CBCA - ***	Page	4.10
CBCG - ***	Page	4.12
CBCH - ***	Page	4.14
CKCB - ***	Page	4.16
LODC - ***	Page	9.08
LKDC - ***	Page	9.10
LPDC - ***	Page	9.12
LRDC - ***	Page	9.14
CSAB - ***	Page	10.08
CDAB - ***	Page	10.10
CODA - ***	Page	10.12

Instructions for ordering complete cartridge and body assemblies. Page viii

Pressure ratings, material specifications. Page 11.02

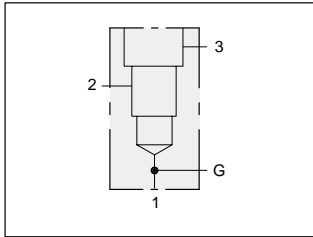
Ports 1 & 2	Port 3	ALUMINIUM		SG IRON	
		Model Code	List Price	Model Code	List Price
.25 NPTF	.25 NPTF	EJA		EJA/S	
.375 NPTF	.25 NPTF	EJB		EJB/S	
SAE-6	SAE-6	EJI		EJI/S	
SAE-8	SAE-8	EJJ		EJJ/S	
.25 BSPP	.25 BSPP	EJT		EJT/S	
.375 BSPP	.25 BSPP	EJU		EJU/S	
.50 BSPP	.25 BSPP	EJV		EJV/S	



LINE MOUNT BODIES



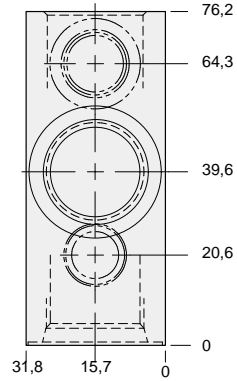
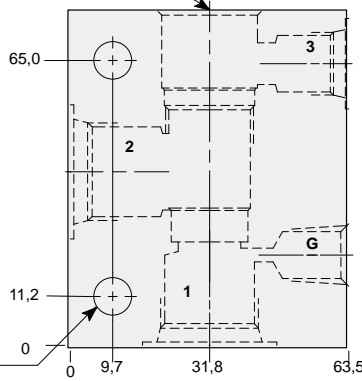
- Aluminium rated to 210 bar and SG Iron rated to 350 bar.



90 degree body with gauge port.

T-11A Cavity
Locating Shoulder
Depth 17,5 mm.

Mounting Holes:
8,6 mm. diameter
through hole
2 places.



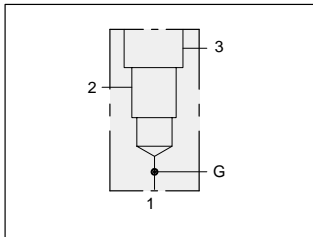
TYPICAL CARTRIDGES USED WITH THIS BODY

RBAD - ***	Page	1.17
RVCA - ***	Page	1.18
RSDC - ***	Page	2.06
SQDB - ***	Page	2.08
SCCA - ***	Page	2.12
PBDB - ***	Page	3.06
LODC - ***	Page	9.08
LKDC - ***	Page	9.10
LPDC - ***	Page	9.12
LRDC - ***	Page	9.14
CSAB - ***	Page	10.08
CDAB - ***	Page	10.10
CODA - ***	Page	10.12

Instructions for ordering complete cartridge and body assemblies. Page viii

Pressure ratings, material specifications. Page 11.02

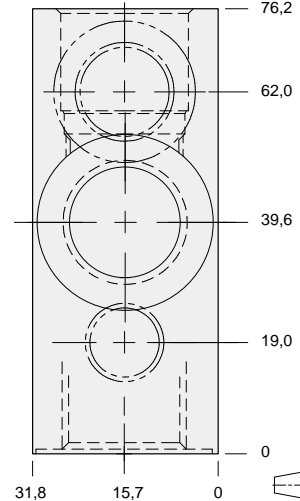
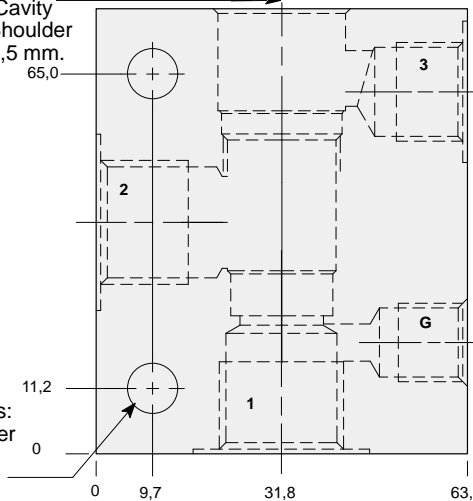
Ports 1 & 2	Port 3	Gauge Port	ALUMINIUM		SG IRON	
			Model Code	List Price	Model Code	List Price
.25 NPTF	.25 NPTF	.25 NPTF	EFA		EFA/S	
.375 NPTF	.25 NPTF	.25 NPTF	EFB		EFB/S	
.50 NPTF	.25 NPTF	.25 NPTF	EFC		EFC/S	
SAE-4	SAE-4	.25 NPTF	EFH		EFH/S	
SAE-6	SAE-6	.25 NPTF	EFI		EFI/S	
SAE-8	SAE-6	.25 NPTF	EFJ		EFJ/S	
SAE-10	SAE-6	.25 NPTF	EFK		EFK/S	
.25 BSPP	.25 BSPP	.25 BSPP	EFT		EFT/S	
.375 BSPP	.25 BSPP	.25 BSPP	EFU		EFU/S	
.50 BSPP	.25 BSPP	.25 BSPP	EFV		EFV/S	



90 degree body with high capacity port 3 and gauge port.

T-11A Cavity
Locating Shoulder
Depth 17,5 mm.

Mounting Holes:
8,6 mm. diameter
through hole
2 places.



TYPICAL CARTRIDGES USED WITH THIS BODY

PPDB - ***	Page	3.10
FRCA - ***	Page	6.02
DPBA - ***	Page	8.06
DPBB - ***	Page	8.07
DPBC - ***	Page	8.08
DPBD - ***	Page	8.09

Instructions for ordering complete cartridge and body assemblies. Page viii

Pressure ratings, material specifications. Page 11.02

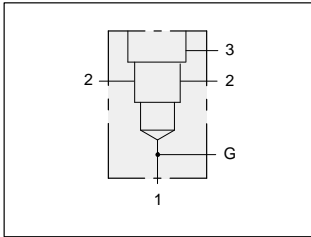
Ports 1 & 2	Port 3	Gauge Port	ALUMINIUM		SG IRON	
			Model Code	List Price	Model Code	List Price
.375 NPTF	.375 NPTF	.25 NPTF	ELB		ELB/S	
.50 NPTF	.375 NPTF	.25 NPTF	ELC		ELC/S	
SAE-6	SAE-6	.25 NPTF	ELI		ELI/S	
SAE-8	SAE-8	.25 NPTF	ELJ		ELJ/S	
SAE-10	SAE-8	.25 NPTF	ELK		ELK/S	
.50 BSPP	.375 BSPP	.25 BSPP	ELV		ELV/S	



LINE MOUNT BODIES

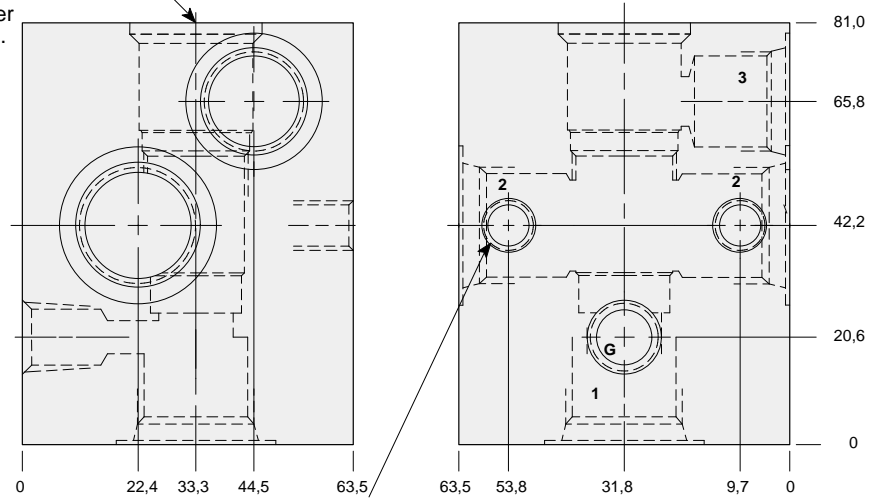


- Aluminium rated to 210 bar and SG Iron rated to 350 bar.



Through port body with gauge port for reducing applications.

T-11A Cavity
Locating Shoulder
Depth 20,6 mm.



Mounting Holes:
(opposite side)
Inch: .375-16 UNC-2B
x 15,7 mm. deep.
Metric: M10 x 1.50-6H
x 15,7 mm. deep.
2 places.



**TYPICAL CARTRIDGES
USED WITH THIS BODY**

PBDB - *** Page 3.06

Instructions for ordering
complete cartridge and body
assemblies. Page viii

Pressure ratings, material
specifications. Page 11.02

Series 1 T-11A

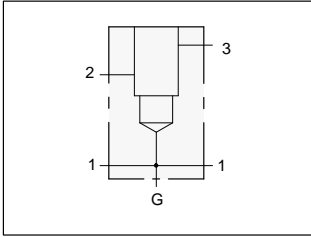
Ports 1 & 2	Port 3	Gauge Port	ALUMINIUM		SG IRON	
			Model Code	List Price	Model Code	List Price
.25 NPTF	.25 NPTF	.25 NPTF	WRM		WRM/S	
.375 NPTF	.25 NPTF	.25 NPTF	WRN		WRN/S	
.50 NPTF	.25 NPTF	.25 NPTF	WRO		WRO/S	
SAE-6	SAE-6	.25 NPTF	WRP		WRP/S	
SAE-8	SAE-6	.25 NPTF	WRQ		WRQ/S	
SAE-10	SAE-6	.25 NPTF	WRR		WRR/S	
.25 BSPP	.25 BSPP	.25 BSPP	WRS		WRS/S	
.375 BSPP	.25 BSPP	.25 BSPP	WRT		WRT/S	
.50 BSPP	.25 BSPP	.25 BSPP	WRU		WRU/S	
.375 NPTF	.375 NPTF	.25 NPTF	WRX		WRX/S	
.50 NPTF	.375 NPTF	.25 NPTF	WRY		WRY/S	
SAE-8	SAE-8	.25 NPTF	WRZ		WRZ/S	
SAE-10	SAE-8	.25 NPTF	WSB		WSB/S	
.375 BSPP	.375 BSPP	.25 BSPP	WSC		WSC/S	
.50 BSPP	.375 BSPP	.25 BSPP	WSD		WSD/S	



LINE MOUNT BODIES



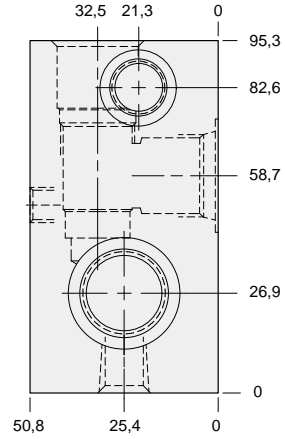
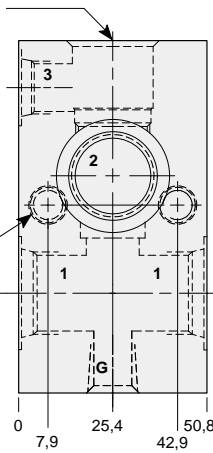
- Aluminium rated to 210 bar and SG Iron rated to 350 bar.



Through port body with gauge port.

T-11A Cavity
Locating Shoulder
Depth 18,3 mm.

Mounting Holes:
(opposite side)
Inch: .375-16 UNC-2B
x 15,7 mm. deep.
Metric: M10 x 1.50-6H
x 15,7 mm. deep.
2 places.

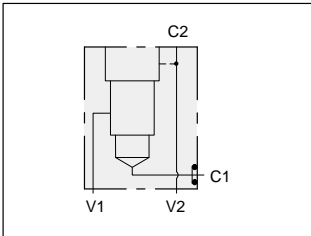


TYPICAL CARTRIDGES USED WITH THIS BODY

RBAD - ***	Page	1.17
RVCA - ***	Page	1.18
RSDC - ***	Page	2.06
SQDB - ***	Page	2.08
SCCA - ***	Page	2.12
PBDB - ***	Page	3.06
LODC - ***	Page	9.08

Instructions for ordering complete cartridge and body assemblies. Page viii
Pressure ratings, material specifications. Page 11.02

Mounting Hole Dimensions	Ports 1 & 2	Port 3	Gauge Port	ALUMINIUM		SG IRON	
				Model Code	List Price	Model Code	List Price
Inch .25 NPTF	.25 NPTF	.25 NPTF	.25 NPTF	EHA		EHA/S	
Inch .375 NPTF	.25 NPTF	.25 NPTF	.25 NPTF	EHB		EHB/S	
Inch .50 NPTF	.25 NPTF	.25 NPTF	.25 NPTF	EHC		EHC/S	
Inch SAE-6	SAE-6	SAE-6	.25 NPTF	EHI		EHI/S	
Inch SAE-8	SAE-6	SAE-6	.25 NPTF	EHI		EHI/S	
Inch SAE-10	SAE-6	SAE-6	.25 NPTF	EHI		EHI/S	
Metric .25 BSPP	.25 BSPP	.25 BSPP	.25 BSPP	EHT		EHT/S	
Metric .375 BSPP	.25 BSPP	.25 BSPP	.25 BSPP	EHU		EHU/S	
Metric .50 BSPP	.25 BSPP	.25 BSPP	.25 BSPP	EHV		EHV/S	

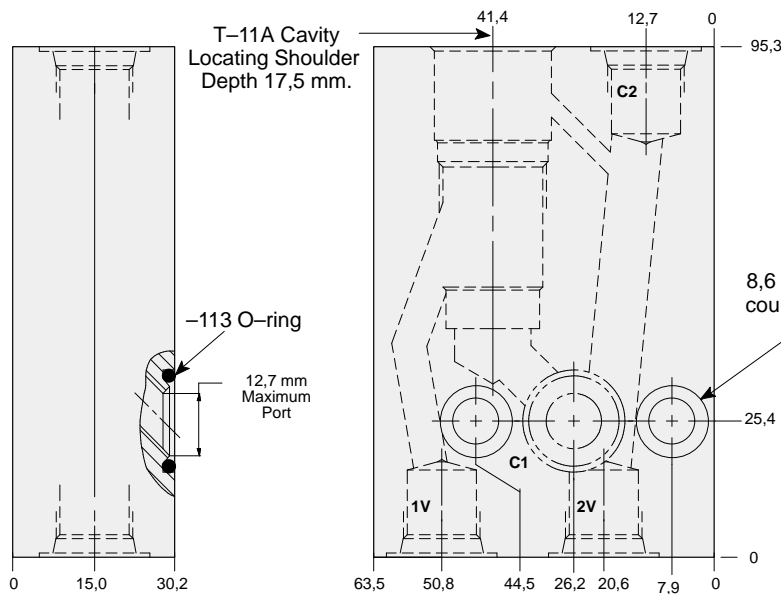


Gasket mount body for load control applications.

T-11A Cavity
Locating Shoulder
Depth 17,5 mm.

-113 O-ring
12,7 mm Maximum Port

Mounting Holes:
8,6 mm. diameter through hole,
counterbore 12,7 mm. diameter
x 6,4 mm. deep.



TYPICAL CARTRIDGES USED WITH THIS BODY

CBGA - ***	Page	4.11
CBCG - ***	Page	4.12
CBCH - ***	Page	4.14
CKCB - ***	Page	4.16

Cartridge seal type determines O-ring type.
Instructions for ordering complete cartridge and body assemblies. Page viii
Pressure ratings, material specifications. Page 11.02

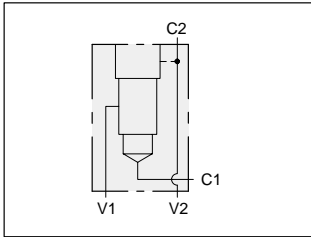
Ports C2, V1, V2	ALUMINIUM		SG IRON	
	Model Code	List Price	Model Code	List Price
.375 NPTF	ZTN		ZTN/S	
SAE-6	ZTC		ZTC/S	
.375 BSPP	ZTD		ZTD/S	



LINE MOUNT BODIES



- Aluminium rated to 210 bar and SG Iron rated to 350 bar.



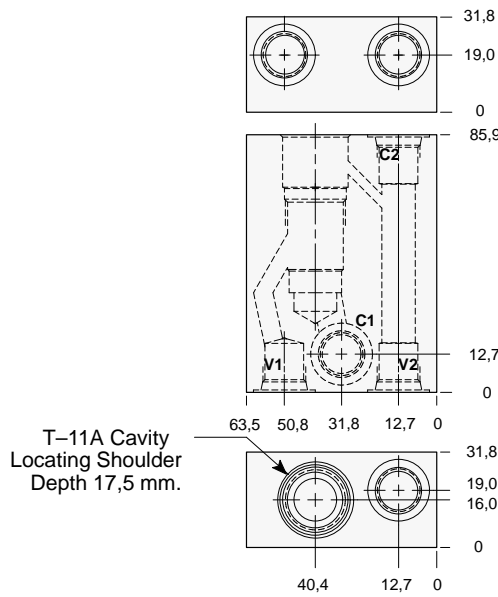
Nipple mount body for load control applications.

TYPICAL CARTRIDGES USED WITH THIS BODY

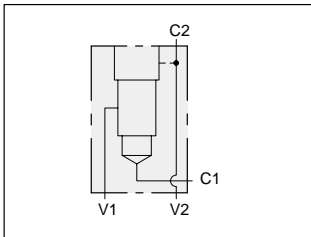
CBCA - ***	Page	4.10
CBCG - ***	Page	4.12
CBCH - ***	Page	4.14
CKCB - ***	Page	4.16

Instructions for ordering complete cartridge and body assemblies. Page viii

Pressure ratings, material specifications. Page 11.02



Port C1	Ports C2, V1, V2	ALUMINIUM		SG IRON	
		Model Code	List Price	Model Code	List Price
SAE-6	SAE-6	ZRK		ZRK/S	
.375 NPTF	SAE-6	ZTS		ZTS/S	
.375 NPTF	.375 NPTF	ZTZ		ZTZ/S	



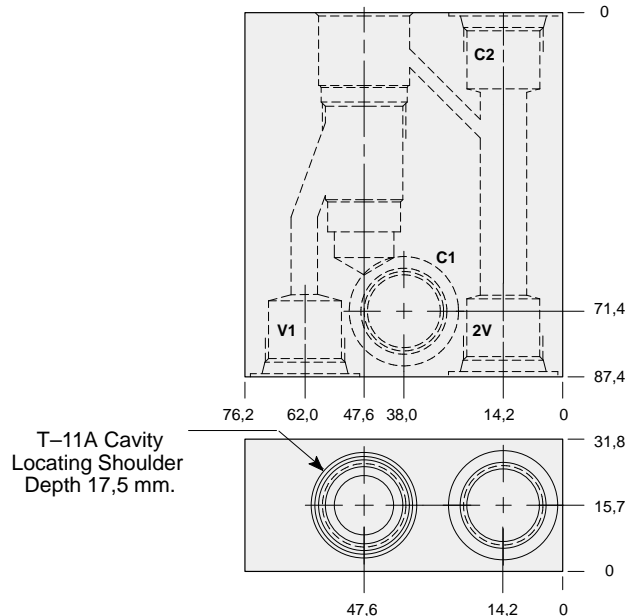
Nipple mount body for load control applications.

TYPICAL CARTRIDGES USED WITH THIS BODY

CBCA - ***	Page	4.10
CBCG - ***	Page	4.12
CBCH - ***	Page	4.14
CKCB - ***	Page	4.16

Instructions for ordering complete cartridge and body assemblies. Page viii

Pressure ratings, material specifications. Page 11.02



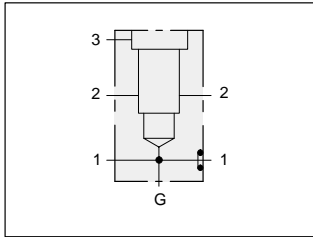
Port C1	Ports C2, V1, V2	ALUMINIUM		SG IRON	
		Model Code	List Price	Model Code	List Price
SAE-8	SAE-8	WPE		WPE/S	
SAE-8	SAE-6	ZRL		ZRL/S	
.50 NPTF	.375 NPTF	ZTY		ZTY/S	



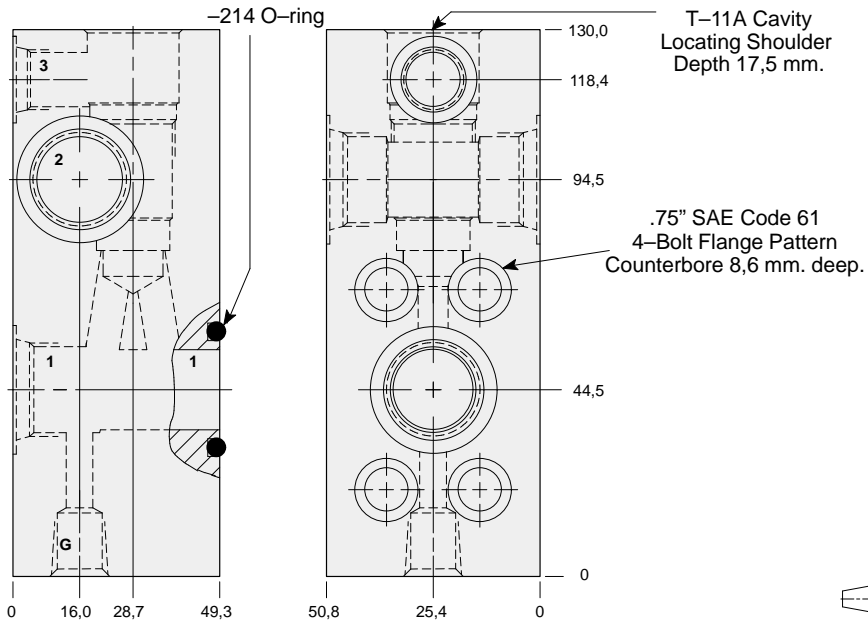
LINE MOUNT BODIES



- Aluminium rated to 210 bar and SG Iron rated to 350 bar.



Flange mount through port .75" SAE Code 61 body with threaded outlet and gauge port.



Mounting Hole Dimensions	Threaded Ports 1 & 2	Port 3	Gauge Port	ALUMINIUM		SG IRON	
				Model Code	List Price	Model Code	List Price
Inch	SAE-10	SAE-6	.25 NPTF	WYY		WYY/S	
Inch	.50 NPTF	.25 NPTF	.25 NPTF	WYZ		WYZ/S	
Metric	.50 BSPP	.25 BSPP	.25 BSPP	WYX/M		WYX/T	

TYPICAL CARTRIDGES USED WITH THIS BODY

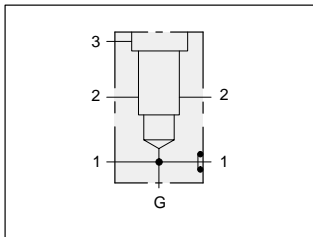
RVCA - ***	Page	1.18
RSDC - ***	Page	2.06
SQDB - ***	Page	2.08
SCCA - ***	Page	2.12
LODC - ***	Page	9.08
LKDC - ***	Page	9.10
LPDC - ***	Page	9.12
LRDC - ***	Page	9.14

Cartridge seal type determines O-ring type.

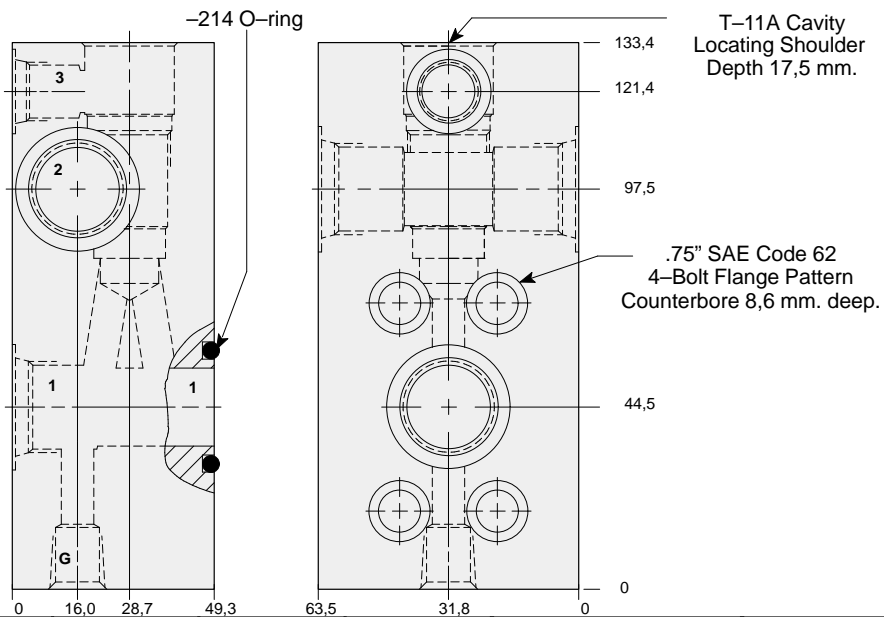
Instructions for ordering complete cartridge and body assemblies. Page viii

Pressure ratings, material specifications. Page 11.02

SAE Specifications. Page 11.03



Flange mount through port .75" SAE Code 62 body with threaded outlet and gauge port.



Mounting Hole Dimensions	Threaded Ports 1 & 2	Port 3	Gauge Port	ALUMINIUM		SG IRON	
				Model Code	List Price	Model Code	List Price
Inch	.50 NPTF	.25 NPTF	.25 NPTF	WYK		WYK/S	
Inch	SAE-10	SAE-6	.25 NPTF	WYJ		WYJ/S	
Metric	.50 BSPP	.25 BSPP	.25 BSPP	WYI/M		WYI/T	

TYPICAL CARTRIDGES USED WITH THIS BODY

RVCA - ***	Page	1.18
RSDC - ***	Page	2.06
SQDB - ***	Page	2.08
SCCA - ***	Page	2.12
LODC - ***	Page	9.08
LKDC - ***	Page	9.10
LPDC - ***	Page	9.12
LRDC - ***	Page	9.14

Cartridge seal type determines O-ring type.

Instructions for ordering complete cartridge and body assemblies. Page viii

Pressure ratings, material specifications. Page 11.02

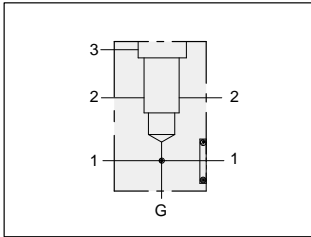
SAE Specifications. Page 11.03



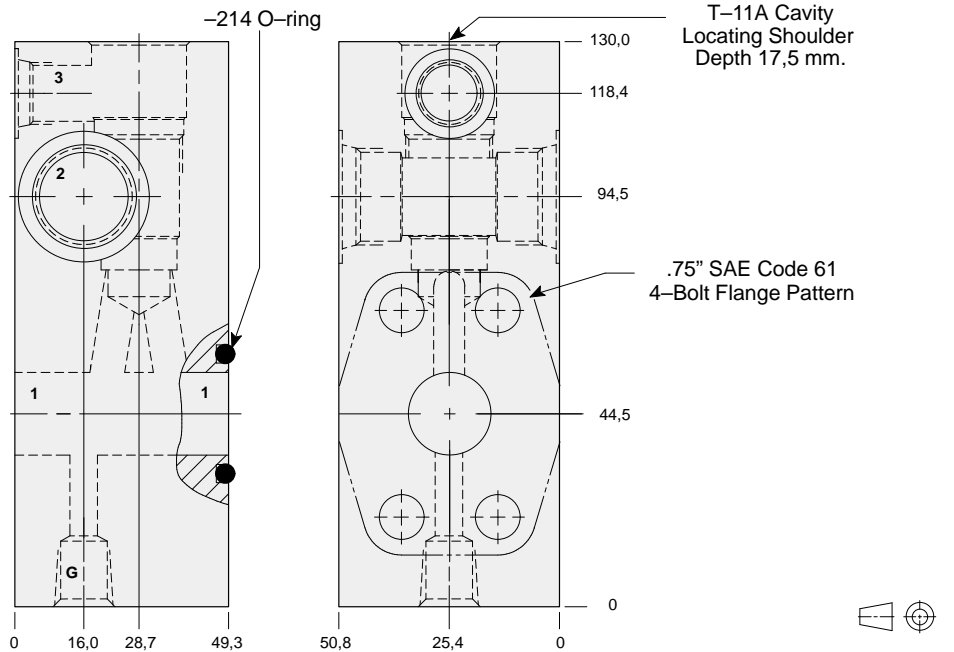
LINE MOUNT BODIES



- Aluminium rated to 210 bar and SG Iron rated to 350 bar.



Sandwich mount through port .75" SAE Code 61 body with gauge port.



TYPICAL CARTRIDGES USED WITH THIS BODY

RVCA - ***	Page	1.18
RSDC - ***	Page	2.06
SQDB - ***	Page	2.08
SCCA - ***	Page	2.12
LODC - ***	Page	9.08
LKDC - ***	Page	9.10
LPDC - ***	Page	9.12
LRDC - ***	Page	9.14

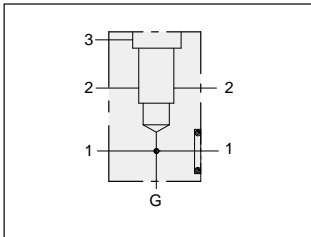
Cartridge seal type determines O-ring type.

Instructions for ordering complete cartridge and body assemblies. Page viii

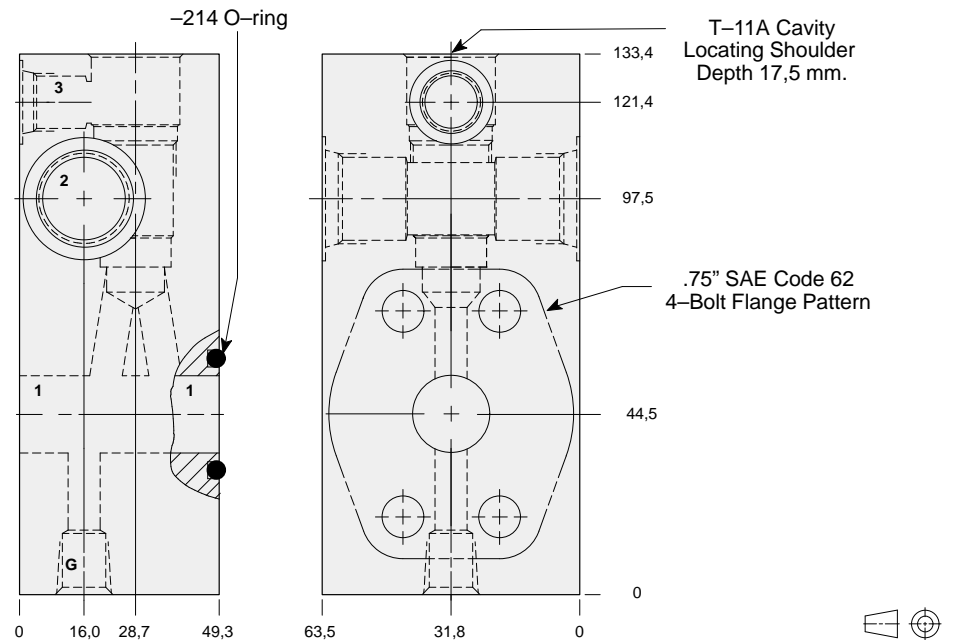
Pressure ratings, material specifications. Page 11.02

SAE Specifications. Page 11.03

Mounting Hole Dimensions	Port 2	Port 3	Gauge Port	ALUMINIUM		SG IRON	
				Model Code	List Price	Model Code	List Price
Inch	SAE-10	SAE-6	.25 NPTF	ZML		ZML/S	
Metric	.50 BSPP	.25 BSPP	.25 BSPP	ZMK/M		ZMK/T	



Sandwich mount through port .75" SAE Code 62 body with gauge port.



TYPICAL CARTRIDGES USED WITH THIS BODY

RVCA - ***	Page	1.18
RSDC - ***	Page	2.06
SQDB - ***	Page	2.08
SCCA - ***	Page	2.12
LODC - ***	Page	9.08
LKDC - ***	Page	9.10
LPDC - ***	Page	9.12
LRDC - ***	Page	9.14

Cartridge seal type determines O-ring type.

Instructions for ordering complete cartridge and body assemblies. Page viii

Pressure ratings, material specifications. Page 11.02

SAE Specifications. Page 11.03

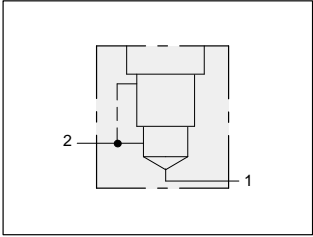
Mounting Hole Dimensions	Port 2	Port 3	Gauge Port	ALUMINIUM		SG IRON	
				Model Code	List Price	Model Code	List Price
Inch	.50 NPTF	.25 NPTF	.25 NPTF	WYN		WYN/S	
Inch	SAE-10	SAE-6	.25 NPTF	WYM		WYM/S	
Metric	.50 BSPP	.25 BSPP	.25 BSPP	WYL/M		WYL/T	



LINE MOUNT BODIES

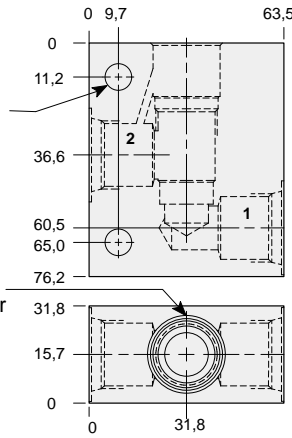


- Aluminium rated to 210 bar and SG Iron rated to 350 bar.



Inline body with port 3 connected to port 2.

Mounting Holes:
8,6 mm. diameter
through hole
2 places.



T-11A Cavity
Locating Shoulder
Depth 17,5 mm.

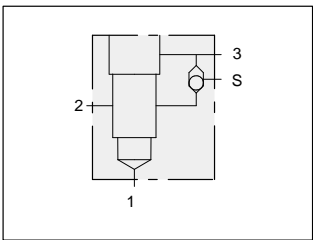


TYPICAL CARTRIDGES USED WITH THIS BODY

CBCA - ***	Page	4.10
CBCG - ***	Page	4.12
CBCH - ***	Page	4.14

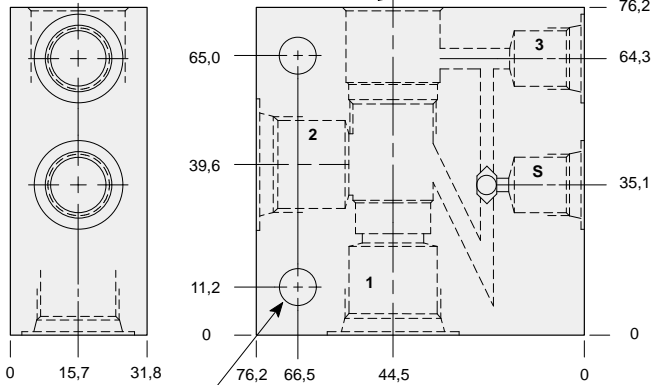
Instructions for ordering complete cartridge and body assemblies.	Page	viii
Pressure ratings, material specifications.	Page	11.02

Ports 1 & 2	ALUMINIUM		SG IRON	
	Model Code	List Price	Model Code	List Price
.25 NPTF	EDA		EDA/S	
.375 NPTF	EDB		EDB/S	
.50 NPTF	EDC		EDC/S	
SAE-6	EDI		EDI/S	
SAE-8	EDJ		EDJ/S	
SAE-10	EDK		EDK/S	
.25 BSPP	EDT		EDT/S	
.375 BSPP	EDU		EDU/S	
.50 BSPP	EDV		EDV/S	



90 degree body with integral shuttle

T-11A Cavity
Locating Shoulder
Depth 17,5 mm.



Mounting Holes:
8,6 mm. diameter
through hole
2 places.



TYPICAL CARTRIDGES USED WITH THIS BODY

CBCA - ***	Page	4.10
CBCG - ***	Page	4.12
CBCH - ***	Page	4.14
CKCB - ***	Page	4.16

Instructions for ordering complete cartridge and body assemblies.	Page	viii
Pressure ratings, material specifications.	Page	11.02

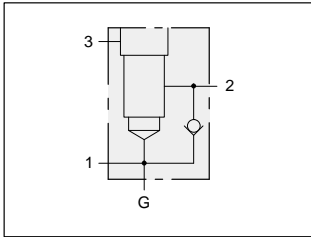
Ports 1 & 2	Ports S & 3	ALUMINIUM		SG IRON	
		Model Code	List Price	Model Code	List Price
.25 NPTF	.25 NPTF	EGA		EGA/S	
.375 NPTF	.25 NPTF	EGB		EGB/S	
.50 NPTF	.25 NPTF	EGC		EGC/S	
SAE-6	SAE-6	EGI		EGI/S	
SAE-8	SAE-6	EGJ		EGJ/S	
SAE-10	SAE-6	EGK		EGK/S	
.25 BSPP	.25 BSPP	EGT		EGT/S	
.375 BSPP	.25 BSPP	EGU		EGU/S	
.50 BSPP	.25 BSPP	EGV		EGV/S	



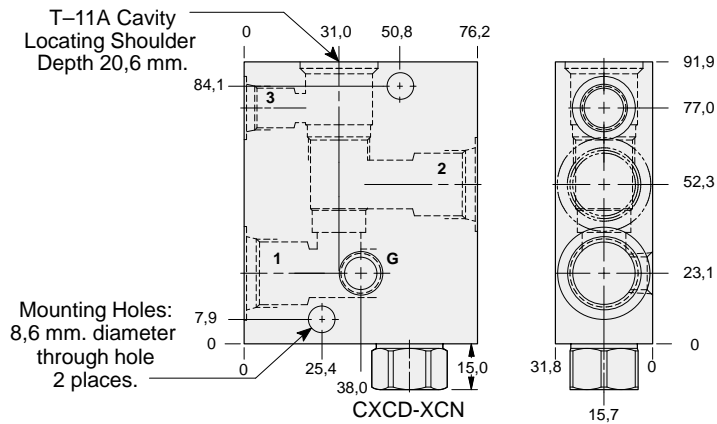
LINE MOUNT BODIES



- Aluminium rated to 210 bar and SG Iron rated to 350 bar.



Body with reverse free flow check and gauge port for reducing applications.



TYPICAL CARTRIDGES USED WITH THIS BODY

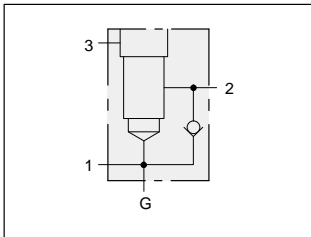
PBDB - *** Page 3.06

Cartridge seal type determines check valve seal type.

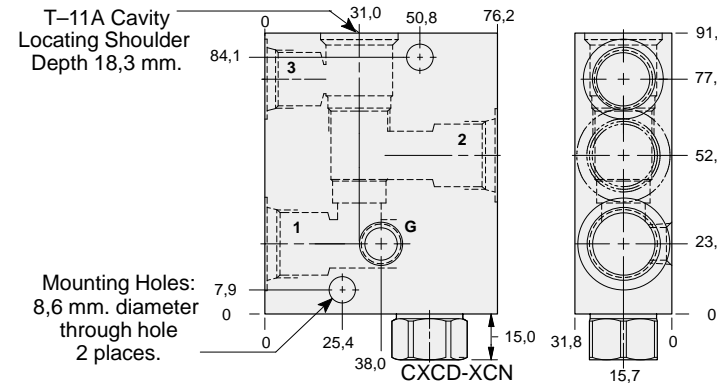
Instructions for ordering complete cartridge and body assemblies. Page viii

Pressure ratings, material specifications. Page 11.02

Ports 1 & 2	Port 3	Gauge Port	ALUMINIUM		SG IRON	
			Model Code	List Price	Model Code	List Price
.25 NPTF	.25 NPTF	.25 NPTF	E2A		E2A/S	
.375 NPTF	.25 NPTF	.25 NPTF	E2B		E2B/S	
.50 NPTF	.25 NPTF	.25 NPTF	E2C		E2C/S	
SAE-6	SAE-6	.25 NPTF	E2I		E2I/S	
SAE-8	SAE-6	.25 NPTF	E2J		E2J/S	
SAE-10	SAE-6	.25 NPTF	E2K		E2K/S	
.25 BSPP	.25 BSPP	.25 BSPP	E2T		E2T/S	
.375 BSPP	.25 BSPP	.25 BSPP	E2U		E2U/S	
.50 BSPP	.25 BSPP	.25 BSPP	E2V		E2V/S	



Body with high capacity port 3 reverse free flow check and gauge port for reducing/relieving applications.



TYPICAL CARTRIDGES USED WITH THIS BODY

PBDB - *** Page 3.06

Cartridge seal type determines check valve seal type.

Instructions for ordering complete cartridge and body assemblies. Page viii

Pressure ratings, material specifications. Page 11.02

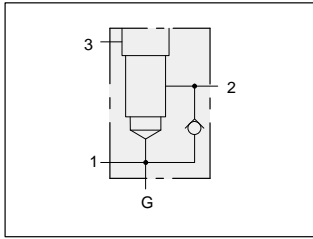
Ports 1 & 2	Port 3	Gauge Port	ALUMINIUM		SG IRON	
			Model Code	List Price	Model Code	List Price
.25 NPTF	.25 NPTF	.25 NPTF	E4A		E4A/S	
.375 NPTF	.375 NPTF	.25 NPTF	E4B		E4B/S	
.50 NPTF	.375 NPTF	.25 NPTF	E4C		E4C/S	
SAE-6	SAE-6	.25 NPTF	E4I		E4I/S	
SAE-8	SAE-8	.25 NPTF	4EJ		E4J/S	
SAE-10	SAE-8	.25 NPTF	E4K		E4K/S	
.25 BSPP	.25 BSPP	.25 BSPP	E4T		E4T/S	
.375 BSPP	.375 BSPP	.25 BSPP	E4U		E4U/S	
.50 BSPP	.375 BSPP	.25 BSPP	E4V		E4V/S	



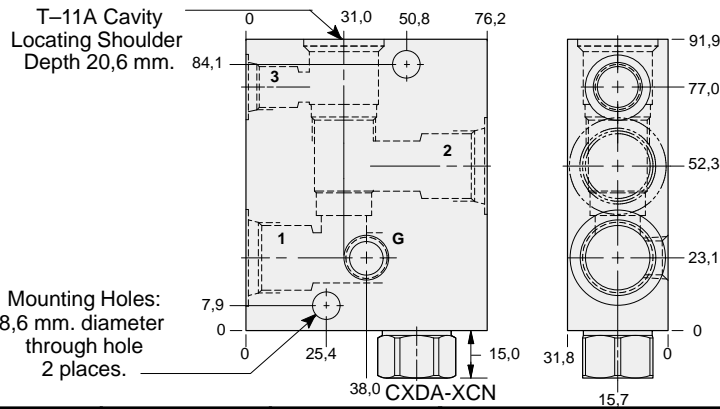
LINE MOUNT BODIES



- Aluminium rated to 210 bar and SG Iron rated to 350 bar.



Body with reverse free flow check and gauge port.



TYPICAL CARTRIDGES USED WITH THIS BODY

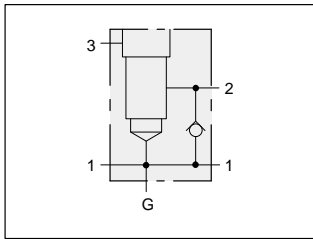
- RVCA - *** Page 1.18
- RSDC - *** Page 2.06
- SQDB - *** Page 2.08

Cartridge seal type determines check valve seal type.

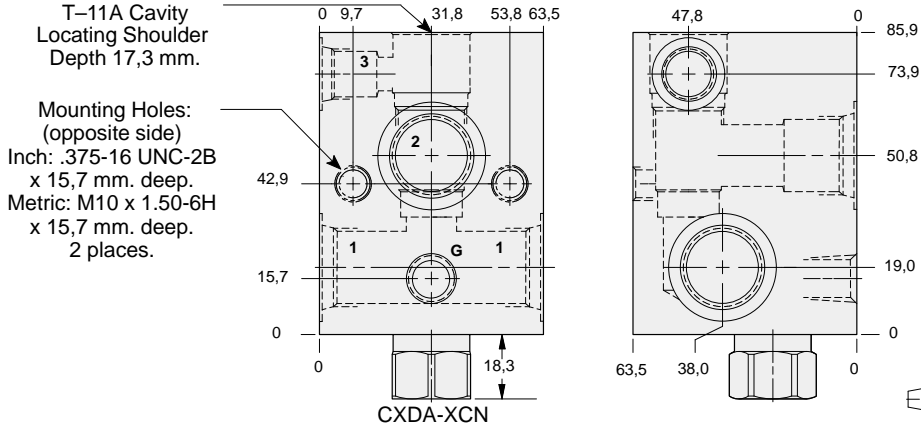
Instructions for ordering complete cartridge and body assemblies. Page viii

Pressure ratings, material specifications. Page 11.02

Ports 1 & 2	Port 3	Gauge Port	ALUMINIUM		SG IRON	
			Model Code	List Price	Model Code	List Price
.25 NPTF	.25 NPTF	.25 NPTF	E6A		E6A/S	
.375 NPTF	.25 NPTF	.25 NPTF	E6B		E6B/S	
.50 NPTF	.25 NPTF	.25 NPTF	E6C		E6C/S	
SAE-6	SAE-6	.25 NPTF	E6I		E6I/S	
SAE-8	SAE-6	.25 NPTF	E6J		E6J/S	
SAE-10	SAE-6	.25 NPTF	E6K		E6K/S	
.25 BSPP	.25 BSPP	.25 BSPP	E6T		E6T/S	
.375 BSPP	.25 BSPP	.25 BSPP	E6U		E6U/S	
.50 BSPP	.25 BSPP	.25 BSPP	E6V		E6V/S	



Through port body with reverse free flow check and gauge port.



TYPICAL CARTRIDGES USED WITH THIS BODY

- RSDC - *** Page 2.06
- SQDB - *** Page 2.08

Cartridge seal type determines check valve seal type.

Instructions for ordering complete cartridge and body assemblies. Page viii

Pressure ratings, material specifications. Page 11.02

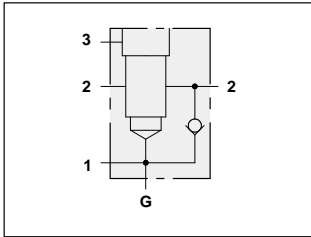
Mounting Hole Dimensions	Ports 1 & 2	Port 3	Gauge Port	ALUMINIUM		SG IRON	
				Model Code	List Price	Model Code	List Price
Inch	.25 NPTF	.25 NPTF	.25 NPTF	E7A		E7A/S	
Inch	.375 NPTF	.25 NPTF	.25 NPTF	E7B		E7B/S	
Inch	.50 NPTF	.25 NPTF	.25 NPTF	E7C		E7C/S	
Inch	SAE-6	SAE-6	.25 NPTF	E7I		E7I/S	
Inch	SAE-8	SAE-6	.25 NPTF	E7J		E7J/S	
Inch	SAE-10	SAE-6	.25 NPTF	E7K		E7K/S	
Metric	.25 BSPP	.25 BSPP	.25 BSPP	E7T		E7T/S	
Metric	.375 BSPP	.25 BSPP	.25 BSPP	E7U		E7U/S	
Metric	.50 BSPP	.25 BSPP	.25 BSPP	E7V		E7V/S	



LINE MOUNT BODIES



- Aluminium rated to 210 bar and SG Iron rated to 350 bar.



TYPICAL CARTRIDGES USED WITH THIS BODY

PBDB - *** Page 3.06

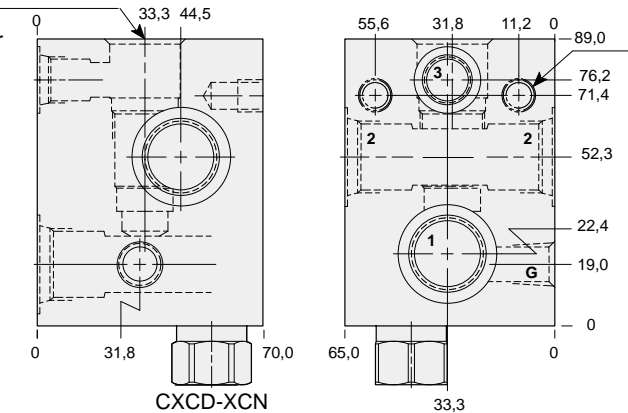
Cartridge seal type determines check valve seal type.

Instructions for ordering complete cartridge and body assemblies. Page viii

Pressure ratings, material specifications. Page 11.02

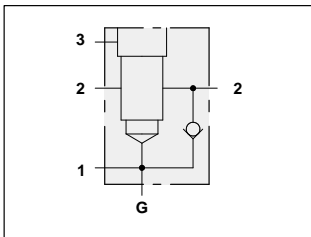
Through port body with reverse free flow check and gauge port for reducing applications.

T-11A Cavity Locating Shoulder Depth 18,3 mm.



Mounting Holes:
(opposite side)
Inch: .375-16 UNC-2B x 15,7 mm. deep.
Metric: M10 x 1.50-6H x 15,7 mm. deep.
2 places.

Mounting Hole Dimensions	Ports 1 & 2	Port 3	Gauge Port	ALUMINIUM		SG IRON	
				Model Code	List Price	Model Code	List Price
Inch	.25 NPTF	.25 NPTF	.25 NPTF	E3A		E3A/S	
Inch	.375 NPTF	.25 NPTF	.25 NPTF	E3B		E3B/S	
Inch	.50 NPTF	.25 NPTF	.25 NPTF	E3C		E3C/S	
Inch	SAE-6	SAE-6	.25 NPTF	E3I		E3I/S	
Inch	SAE-8	SAE-6	.25 NPTF	E3J		E3J/S	
Inch	SAE-10	SAE-6	.25 NPTF	E3K		E3K/S	
Metric	.25 BSPP	.25 BSPP	.25 BSPP	E3T		E3T/S	
Metric	.375 BSPP	.25 BSPP	.25 BSPP	E3U		E3U/S	
Metric	.50 BSPP	.25 BSPP	.25 BSPP	E3V		ESV/S	



TYPICAL CARTRIDGES USED WITH THIS BODY

PBDB - *** Page 3.06

Cartridge seal type determines check valve seal type.

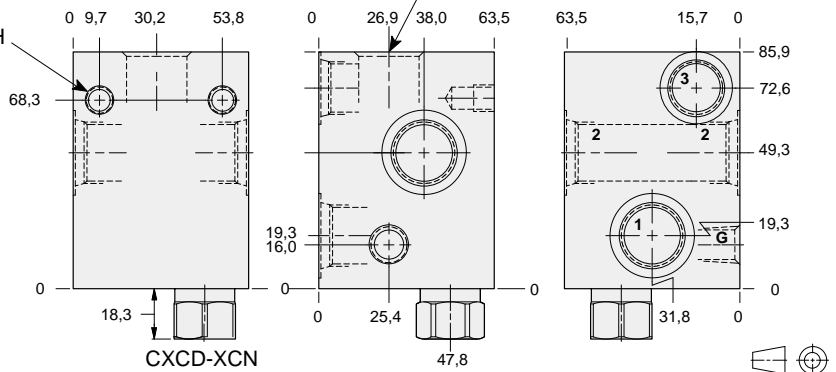
Instructions for ordering complete cartridge and body assemblies. Page viii

Pressure ratings, material specifications. Page 11.02

Through port body with high capacity port 3 reverse free flow check and gauge port for reducing/relieving applications.

Mounting Holes:
Inch: .375-16 UNC-2B x 15,7 mm. deep.
Metric: M10 x 1.50-6H x 15,7 mm. deep.
2 places.

T-11A Cavity Locating Shoulder Depth 18,3 mm.



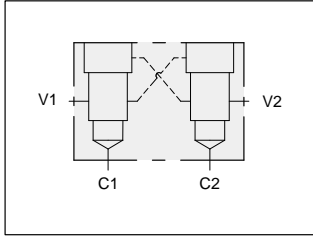
Mounting Hole Dimensions	Ports 1 & 2	Port 3	Gauge Port	ALUMINIUM		SG IRON	
				Model Code	List Price	Model Code	List Price
Inch	.375 NPTF	.375 NPTF	.25 NPTF	E5B		E5B/S	
Inch	.50 NPTF	.375 NPTF	.25 NPTF	E5C		E5C/S	
Inch	SAE-8	SAE-8	.25 NPTF	E5J		E5J/S	
Inch	SAE-10	SAE-8	.25 NPTF	E5K		E5K/S	
Metric	.375 BSPP	.375 BSPP	.25 BSPP	E5U		E5U/S	
Metric	.50 BSPP	.375 BSPP	.25 BSPP	E5V		E5V/S	



LINE MOUNT BODIES



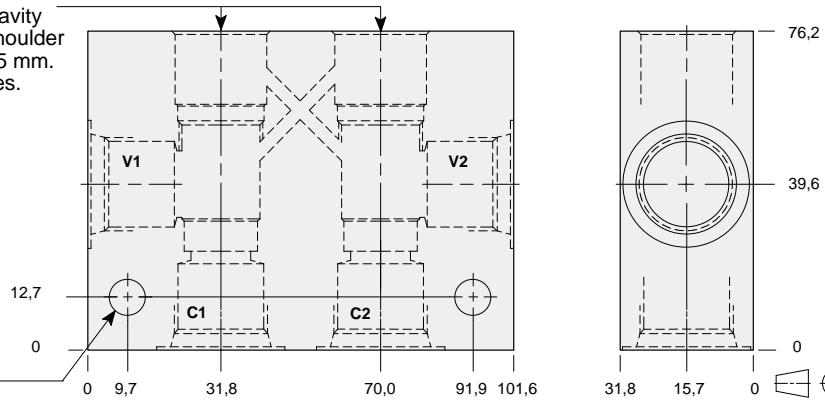
- Aluminium rated to 210 bar and SG Iron rated to 350 bar.



Two cavity 90 degree cross-piloted body for load control applications.

T-11A Cavity Locating Shoulder Depth 17,5 mm. 2 places.

Mounting Holes: 8,6 mm. diameter through hole 2 places.



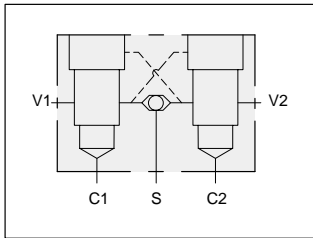
TYPICAL CARTRIDGES USED WITH THIS BODY

CBCA - ***	Page	4.10
CBCG - ***	Page	4.12
CBCH - ***	Page	4.14
CKCB - ***	Page	4.16

Instructions for ordering complete cartridge and body assemblies. Page viii

Pressure ratings, material specifications. Page 11.02

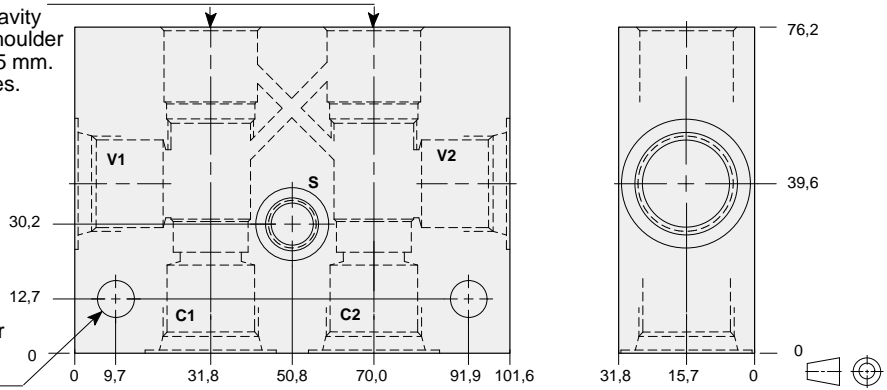
Ports C1, C2, & V1, V2	ALUMINIUM		SG IRON	
	Model Code	List Price	Model Code	List Price
.25 NPTF	YEA		YEA/S	
.375 NPTF	YEB		YEB/S	
.50 NPTF	YEC		YEC/S	
SAE-6	YEI		YEI/S	
SAE-8	YEJ		YEJ/S	
SAE-10	YEK		YEK/S	
.25 BSPP	YET		YET/S	
.375 BSPP	YEU		YEU/S	
.50 BSPP	YEV		YEV/S	



Two cavity 90 degree cross-piloted body with shuttle for load control applications.

T-11A Cavity Locating Shoulder Depth 17,5 mm. 2 places.

Mounting Holes: 8,6 mm. diameter through hole 2 places.



TYPICAL CARTRIDGES USED WITH THIS BODY

CBCA - ***	Page	4.10
CBCG - ***	Page	4.12
CBCH - ***	Page	4.14
CKCB - ***	Page	4.16

Instructions for ordering complete cartridge and body assemblies. Page viii

Pressure ratings, material specifications. Page 11.02

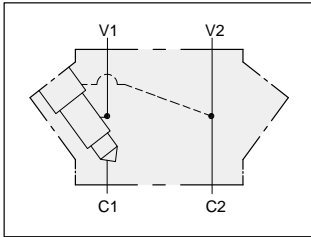
Ports C1, C2, & V1, V2	Port S	ALUMINIUM		SG IRON	
		Model Code	List Price	Model Code	List Price
.25 NPTF	.25 NPTF	YGA		YGA/S	
.375 NPTF	.25 NPTF	YGB		YGB/S	
.50 NPTF	.25 NPTF	YGC		YGC/S	
SAE-6	SAE-4	YGI		YGI/S	
SAE-8	SAE-4	YGJ		YGJ/S	
SAE-10	SAE-4	YGK		YGK/S	
.25 BSPP	.25 BSPP	YGT		YGT/S	
.375 BSPP	.25 BSPP	YGU		YGU/S	
.50 BSPP	.25 BSPP	YGV		YGV/S	



LINE MOUNT BODIES

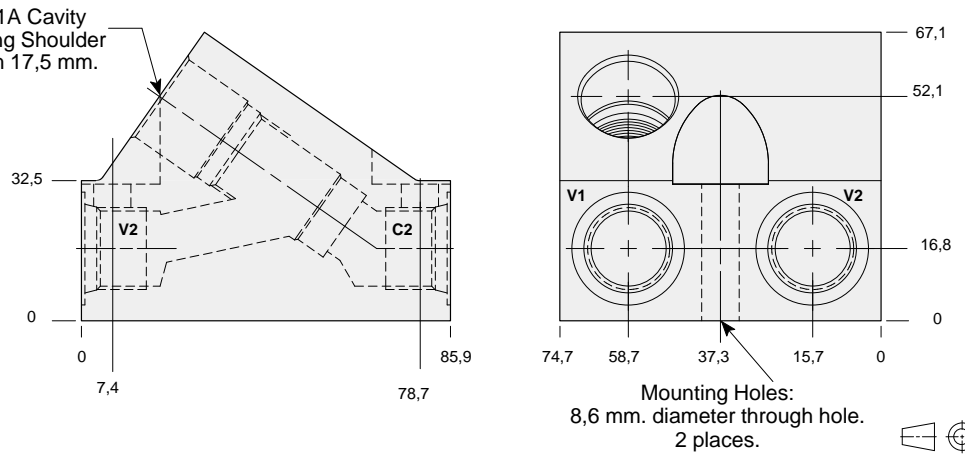


- Aluminium rated to 210 bar and SG Iron rated to 350 bar.



Inline body for load control applications.

T-11A Cavity
Locating Shoulder
Depth 17,5 mm.



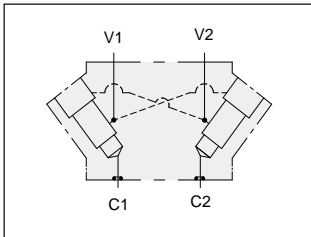
TYPICAL CARTRIDGES USED WITH THIS BODY

CBCA - ***	Page	4.10
CBCG - ***	Page	4.12
CBCH - ***	Page	4.14
CKCB - ***	Page	4.16

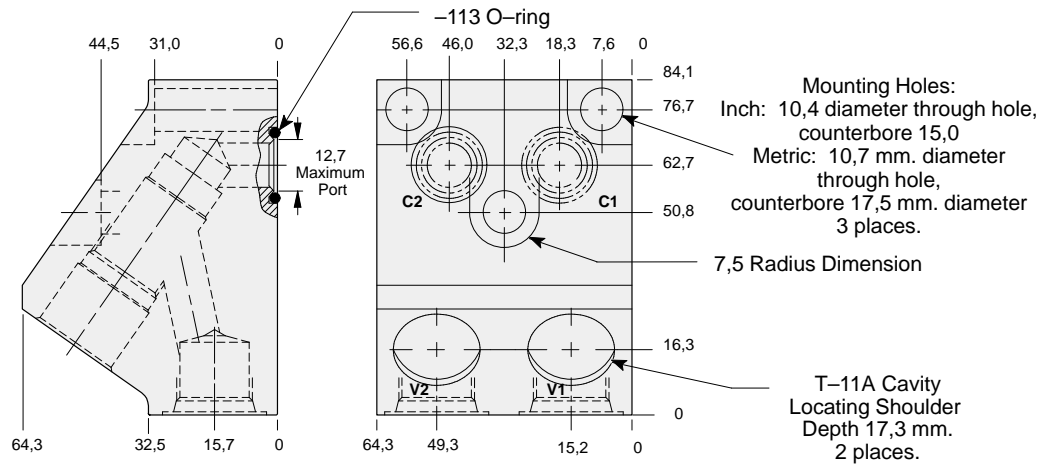
Instructions for ordering complete cartridge and body assemblies. Page viii

Pressure ratings, material specifications. Page 11.02

Ports C1, C2, & V1, V2	ALUMINIUM		SG IRON	
	Model Code	List Price	Model Code	List Price
.25 NPTF	XVF		XVF/S	
.375 NPTF	XVG		XVG/S	
SAE-6	XVH		XVH/S	
SAE-8	XVI		XVI/S	
.25 BSPP	XVJ		XVJ/S	
.375 BSPP	XVK		XVK/S	



Two cavity inline gasket mount cross-piloted body for load control applications.



TYPICAL CARTRIDGES USED WITH THIS BODY

CBCA - ***	Page	4.10
CBCG - ***	Page	4.12
CBCH - ***	Page	4.14
CKCB - ***	Page	4.16

Cartridge seal type determines O-ring type.

Instructions for ordering complete cartridge and body assemblies. Page viii

Pressure ratings, material specifications. Page 11.02

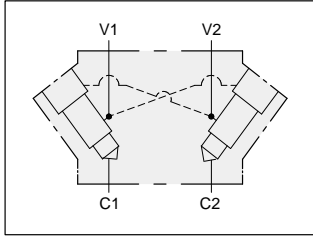
Mounting Hole Dimensions	Ports V1, & V2	ALUMINIUM		SG IRON	
		Model Code	List Price	Model Code	List Price
Inch	.25 NPTF	XVL		XVL/S	
Inch	.375 NPTF	XVM		XVM/S	
Inch	SAE-6	XVN		XVN/S	
Inch	SAE-8	XVO		XVO/S	
Metric	.25 BSPP	XVP		XVP/S	
Metric	.375 BSPP	XVQ		XVQ/S	



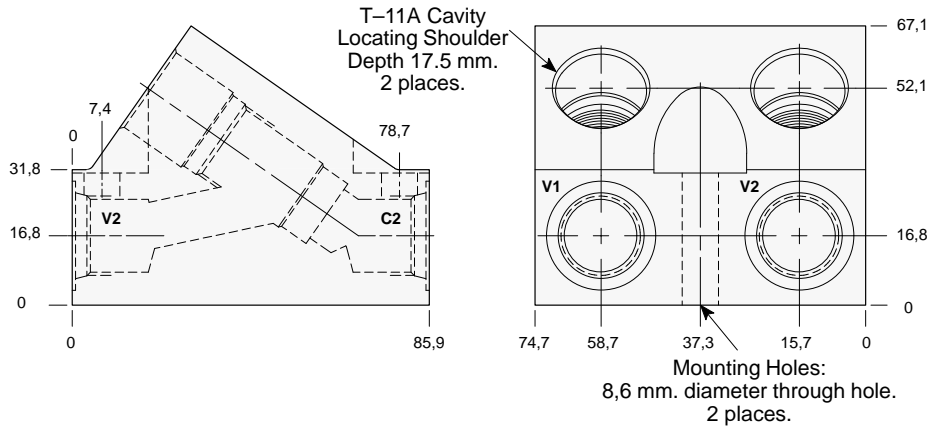
LINE MOUNT BODIES



- Aluminium rated to 210 bar and SG Iron rated to 350 bar.



Two cavity inline cross-piloted body for load control applications.



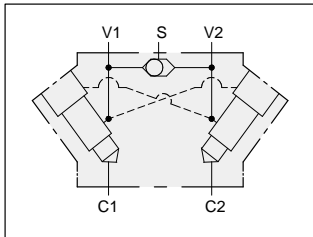
TYPICAL CARTRIDGES USED WITH THIS BODY

- CBCA - *** Page 4.10
- CBCG - *** Page 4.12
- CBCH - *** Page 4.14
- CKCB - *** Page 4.16

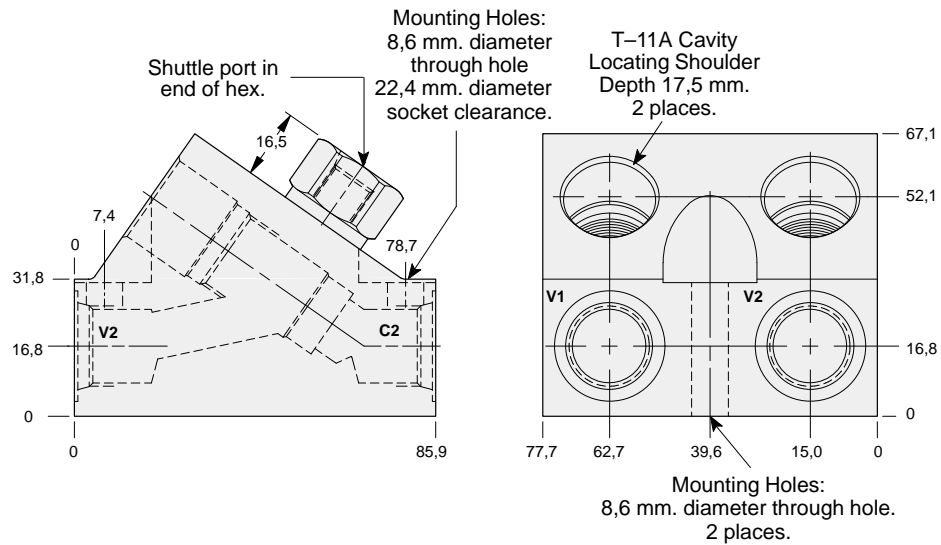
Instructions for ordering complete cartridge and body assemblies. Page viii

Pressure ratings, material specifications. Page 11.02

Ports C1, C2, & V1, V2	ALUMINIUM		SG IRON	
	Model Code	List Price	Model Code	List Price
.25 NPTF	XEA		XEA/S	
.375 NPTF	XEB		XEB/S	
SAE-6	XEI		XEI/S	
SAE-8	XEJ		XEJ/S	
.25 BSPP	XET		XET/S	
.375 BSPP	XEU		XEU/S	
.50 BSPP	XEV		XEV/S	



Two cavity inline cross-piloted body with shuttle for load control applications.



TYPICAL CARTRIDGES USED WITH THIS BODY

- CBCA - *** Page 4.10
- CBCG - *** Page 4.12
- CBCH - *** Page 4.14
- CKCB - *** Page 4.16

Instructions for ordering complete cartridge and body assemblies. Page viii

Pressure ratings, material specifications. Page 11.02

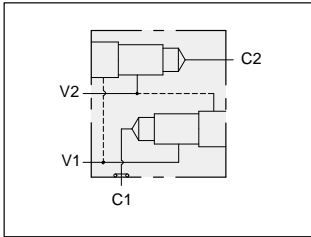
Ports C1, C2, & V1, V2	Shuttle Cartridge	Shuttle Port	ALUMINIUM		SG IRON	
			Model Code	List Price	Model Code	List Price
.25 NPTF	CSAA - EXN	SAE-4	XGA		XGA/S	
.375 NPTF	CSAA - EXN	SAE-4	XGB		XGB/S	
SAE-6	CSAA - EXN	SAE-4	XGI		XGI/S	
SAE-8	CSAA - EXN	SAE-4	XGJ		XGJ/S	
.25 BSPP	CSAA - BXN	.25 BSPP	XGT		XGT/S	
.375 BSPP	CSAA - BXN	.25 BSPP	XGU		XGU/S	



LINE MOUNT BODIES



- Aluminium rated to 210 bar and SG Iron rated to 350 bar.



Two cavity gasket mount body for load control applications.

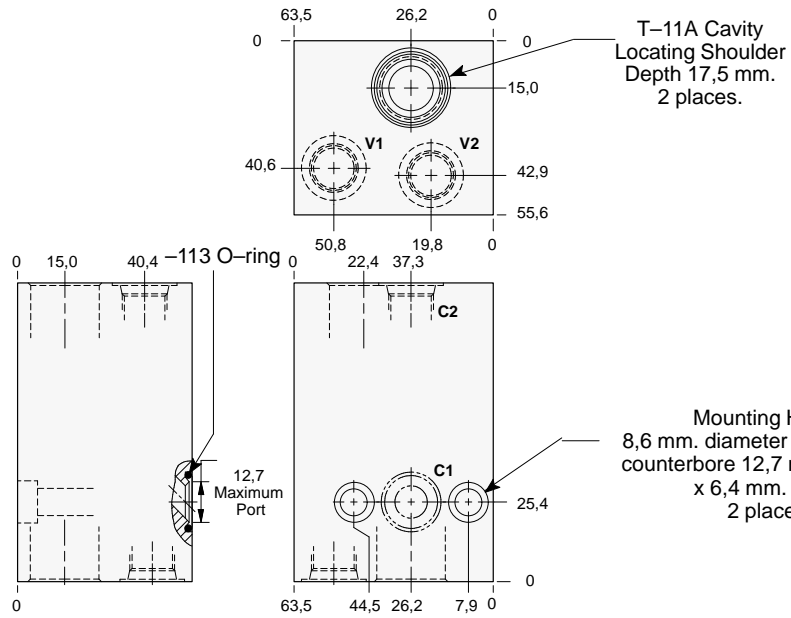
TYPICAL CARTRIDGES USED WITH THIS BODY

CBCA - ***	Page	4.10
CBCG - ***	Page	4.12
CBCH - ***	Page	4.14
CKCB - ***	Page	4.16

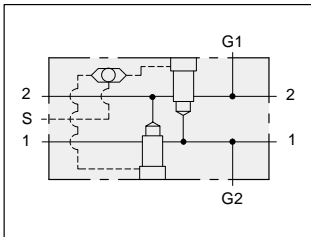
Cartridge seal type determines O-ring type.

Instructions for ordering complete cartridge and body assemblies. Page viii

Pressure ratings, material specifications. Page 11.02



Ports C1, C2, & V1, V2	ALUMINIUM		SG IRON	
	Model Code	List Price	Model Code	List Price
.375 NPTF	YVM		YVM/S	
SAE-6	YVY		YVY/S	
.375 BSPP	YVX		YVX/S	



Two cavity through port body with shuttle and gauge ports.

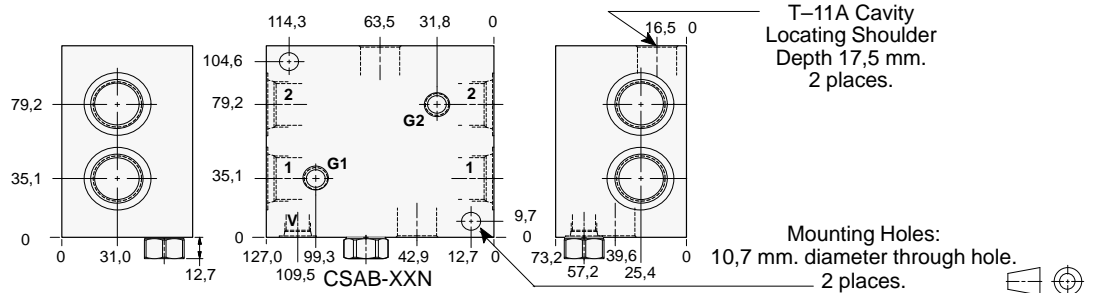
TYPICAL CARTRIDGES USED WITH THIS BODY

RVCA - ***	Page	1.18
------------	------	------

Cartridge seal type determines O-ring type.

Instructions for ordering complete cartridge and body assemblies. Page viii

Pressure ratings, material specifications. Page 11.02



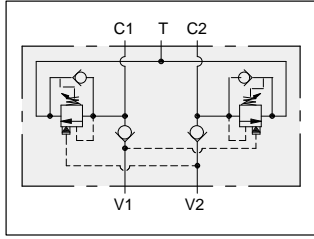
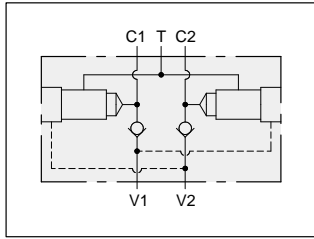
Ports 1 & 2	Port V	Ports G1 & G2	ALUMINIUM		SG IRON	
			Model Code	List Price	Model Code	List Price
.25 NPTF	.25 NPTF	.25 NPTF	XOA		XOA/S	
.375 NPTF	.25 NPTF	.25 NPTF	XOB		XOB/S	
.50 NPTF	.25 NPTF	.25 NPTF	XOC		XOC/S	
.75 NPTF	.25 NPTF	.25 NPTF	XOD		XOD/S	
SAE-6	SAE-6	.25 NPTF	XOI		XOI/S	
SAE-8	SAE-6	.25 NPTF	XOJ		XOJ/S	
SAE-10	SAE-6	.25 NPTF	XOK		XOK/S	
SAE-12	SAE-6	.25 NPTF	XOL		XOL/S	
.25 BSPP	.25 BSPP	.25 BSPP	XOT		XOT/S	
.375 BSPP	.25 BSPP	.25 BSPP	XOU		XOU/S	
.50 BSPP	.25 BSPP	.25 BSPP	XOV		XOV/S	
.75 BSPP	.25 BSPP	.25 BSPP	XOW		XOW/S	



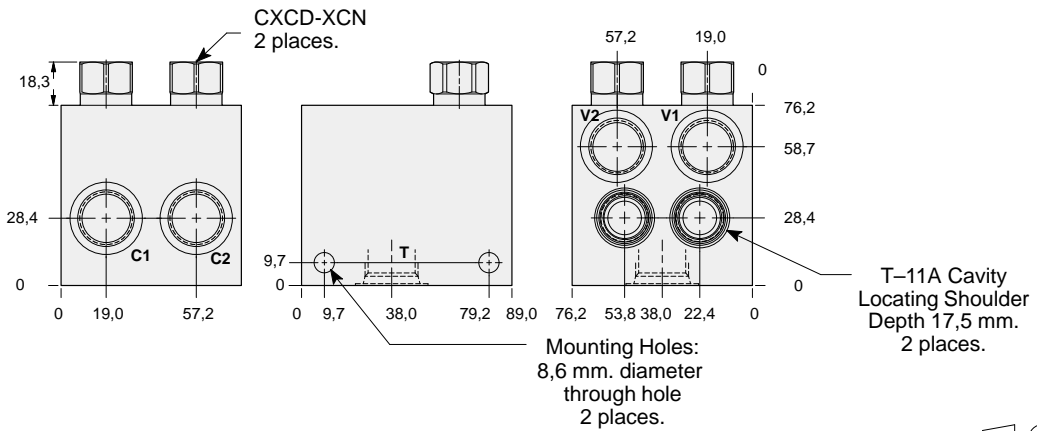
LINE MOUNT BODIES



- Aluminium rated to 210 bar and SG Iron rated to 350 bar.



Two cavity dual load control body with checks.



Discharge oil returns to tank through port T.



TYPICAL CARTRIDGES USED WITH THIS BODY

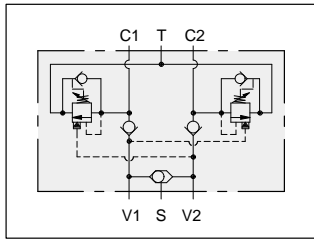
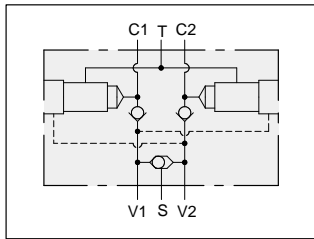
- CBCA - *** Page 4.10
- CBCG - *** Page 4.12
- CBCH - *** Page 4.14

Cartridge seal type determines check valve seal type.

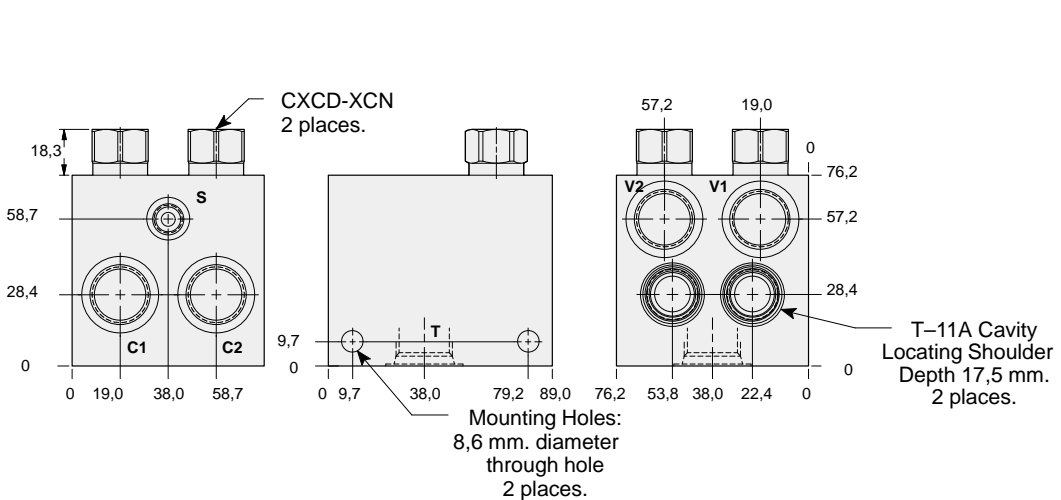
Instructions for ordering complete cartridge and body assemblies. Page iii

Pressure ratings, material specifications. Page 11.02

Ports C1, C2, & V1, V2	Port T	ALUMINIUM		SG IRON	
		Model Code	List Price	Model Code	List Price
.375 NPTF	.50 NPTF	EMB		EMB/S	
.50 NPTF	.50 NPTF	EMC		EMC/S	
SAE-8	SAE-10	EMJ		EMJ/S	
SAE-10	SAE-10	EMK		EMK/S	
.375 BSPP	.50 BSPP	EMU		EMU/S	
.50 BSPP	.50 BSPP	EMV		EMV/S	



Two cavity dual load control body with checks and shuttle.



Discharge oil returns to tank through port T.



TYPICAL CARTRIDGES USED WITH THIS BODY

- CBCA - *** Page 4.10
- CBCG - *** Page 4.12
- CBCH - *** Page 4.14

Cartridge seal type determines check valve seal type.

Instructions for ordering complete cartridge and body assemblies. Page viii

Pressure ratings, material specifications. Page 11.02

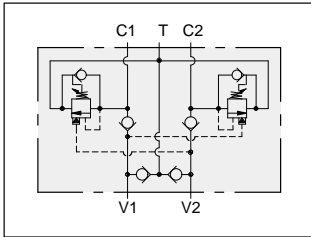
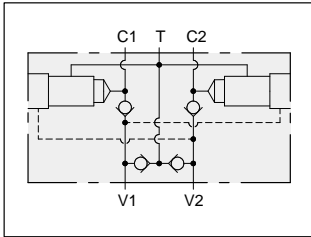
Ports C1, C2, & V1, V2	Port S	Port T	ALUMINIUM		SG IRON	
			Model Code	List Price	Model Code	List Price
.375 NPTF	.25 NPTF	.50 NPTF	ENB		ENB/S	
.50 NPTF	.25 NPTF	.50 NPTF	ENC		ENC/S	
SAE-8	SAE-4	SAE-10	ENJ		ENJ/S	
SAE-10	SAE-4	SAE-10	ENK		ENK/S	
.375 BSPP	.25 BSPP	.50 BSPP	ENU		ENU/S	
.50 BSPP	.25 BSPP	.50 BSPP	ENV		ENV/S	



LINE MOUNT BODIES



- Aluminium rated to 210 bar and SG Iron rated to 350 bar.



TYPICAL CARTRIDGES USED WITH THIS BODY

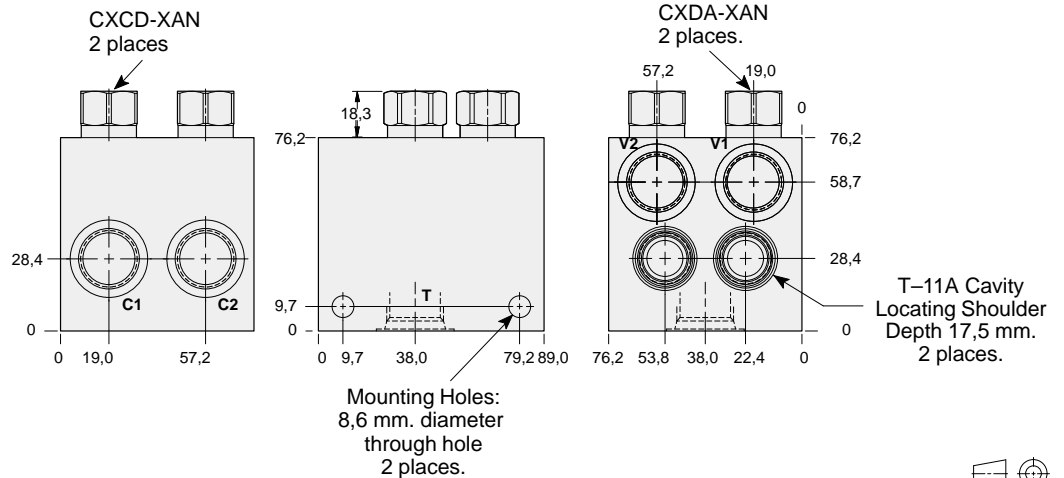
CBCA - ***	Page	4.10
CBCG - ***	Page	4.12
CBCH - ***	Page	4.14

Cartridge seal type determines check valve seal type.

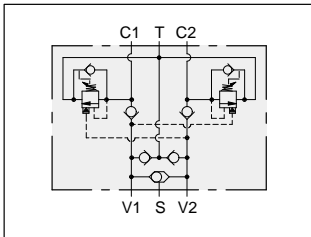
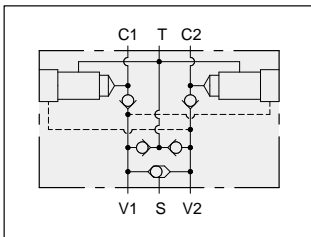
Instructions for ordering complete cartridge and body assemblies. Page viii

Pressure ratings, material specifications. Page 11.02

Two cavity dual load control body with make-up checks.



Ports C1, C2, & V1, V2	Port T	ALUMINIUM		SG IRON	
		Model Code	List Price	Model Code	List Price
.375 NPTF	.50 NPTF	EPB		EPB/S	
.50 NPTF	.50 NPTF	EPC		EPC/S	
SAE-8	SAE-10	EPJ		EPJ/S	
SAE-10	SAE-10	EPK		EPK/S	
.375 BSPP	.50 BSPP	EPU		EPU/S	
.50 BSPP	.50 BSPP	EPV		EPV/S	



TYPICAL CARTRIDGES USED WITH THIS BODY

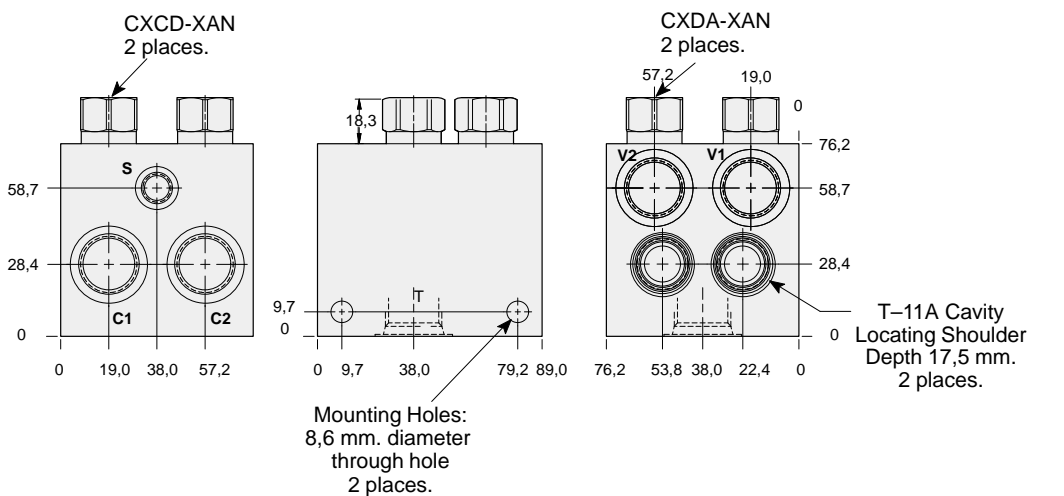
CBCA - ***	Page	4.10
CBCG - ***	Page	4.12
CBCH - ***	Page	4.14

Cartridge seal type determines check valve seal type.

Instructions for ordering complete cartridge and body assemblies. Page viii

Pressure ratings, material specifications. Page 11.02

Two cavity dual load control body with make-up checks and shuttle.



Ports C1, C2, & V1, V2	Port S	Port T	ALUMINIUM		SG IRON	
			Model Code	List Price	Model Code	List Price
.375 NPTF	.25 NPTF	.50 NPTF	EQB		EQB/S	
.50 NPTF	.25 NPTF	.50 NPTF	EQC		EQC/S	
SAE-8	SAE-4	SAE-10	EQJ		EQJ/S	
SAE-10	SAE-4	SAE-10	EQK		EQK/S	
.375 BSPP	.25 BSPP	.50 BSPP	EQU		EQU/S	
.50 BSPP	.25 BSPP	.50 BSPP	EQV		EQV/S	

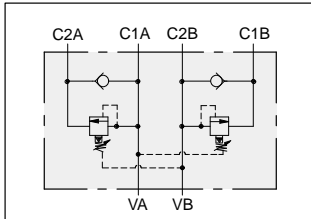
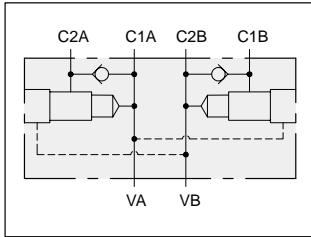


LINE MOUNT BODIES

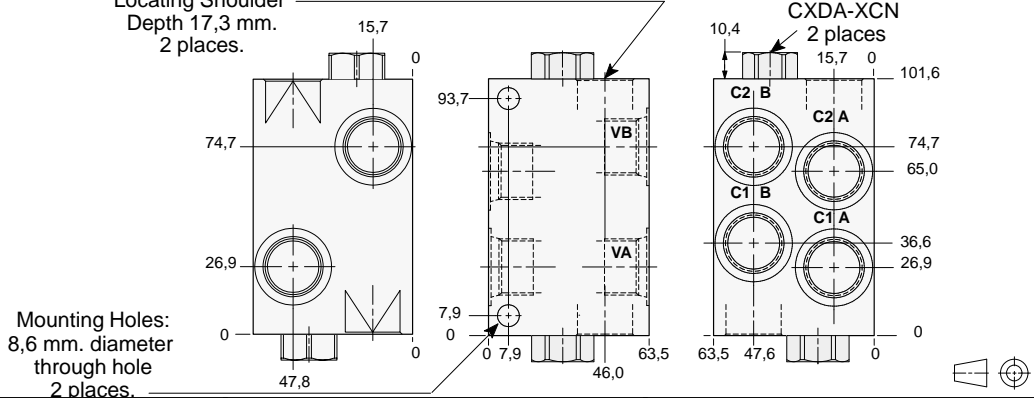


- Aluminium rated to 210 bar and SG Iron rated to 350 bar.

Two cavity dual sequence body with reverse free flow checks.



T-11A Cavity
Locating Shoulder
Depth 17,3 mm.
2 places.

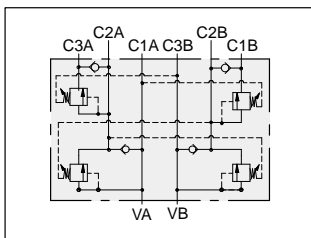
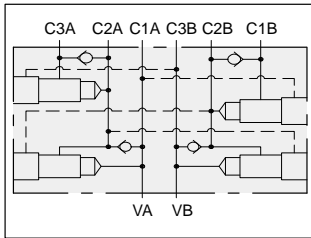


TYPICAL CARTRIDGES USED WITH THIS BODY

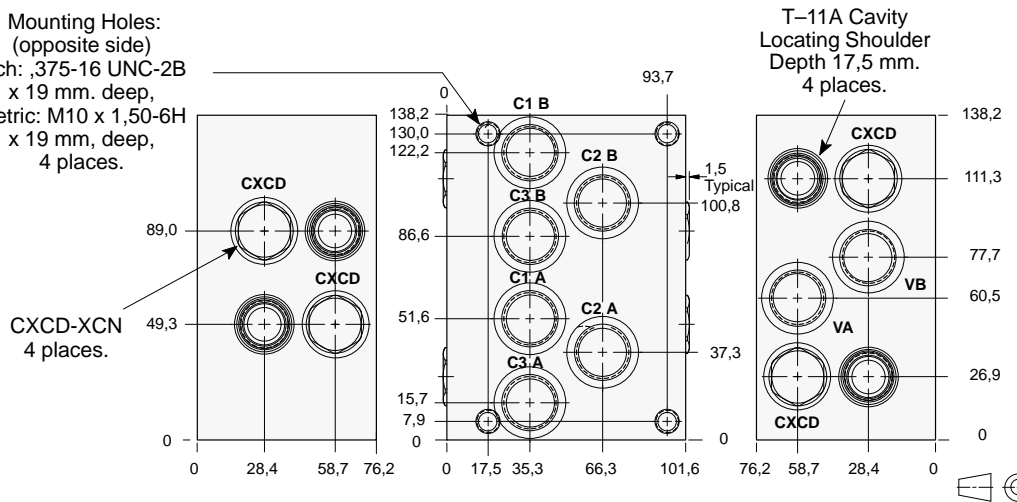
- RSDC - *** Page 2.06
SQDB - *** Page 2.08
- Cartridge seal type determines check valve seal type.
- Instructions for ordering complete cartridge and body assemblies. Page viii
- Pressure ratings, material specifications. Page 11.02

All Ports	ALUMINIUM		SG IRON	
	Model Code	List Price	Model Code	List Price
.25 NPTF	E8A		E8A/S	
.375 NPTF	E8B		E8B/S	
.50 NPTF	E8C		E8C/S	
SAE-6	E8I		E8I/S	
SAE-8	E8J		E8J/S	
SAE-10	E8K		E8K/S	
.25 BSPP	E8T		E8T/S	
.375 BSPP	E8U		E8U/S	
.50 BSPP	E8V		E8V/S	

Four cavity triple sequence body with reverse free flow checks.



Mounting Holes:
(opposite side)
Inch: .375-16 UNC-2B
x 19 mm. deep,
Metric: M10 x 1,50-6H
x 19 mm. deep,
4 places.



TYPICAL CARTRIDGES USED WITH THIS BODY

- RSDC - *** Page 2.06
SQDB - *** Page 2.08
- Cartridge seal type determines check valve seal type.
- Instructions for ordering complete cartridge and body assemblies. Page viii
- Pressure ratings, material specifications. Page 11.02

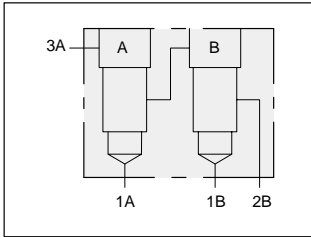
Mounting Hole Dimensions	All Ports	ALUMINIUM		SG IRON	
		Model Code	List Price	Model Code	List Price
Inch	.375 NPTF	E9B		E9B/S	
Inch	.50 NPTF	E9C		E9C/S	
Inch	SAE-8	E9J		E9J/S	
Inch	SAE-10	E9K		E9K/S	
Metric	.375 BSPP	E9U		E9U/S	
Metric	.50 BSPP	E9V		E9V/S	



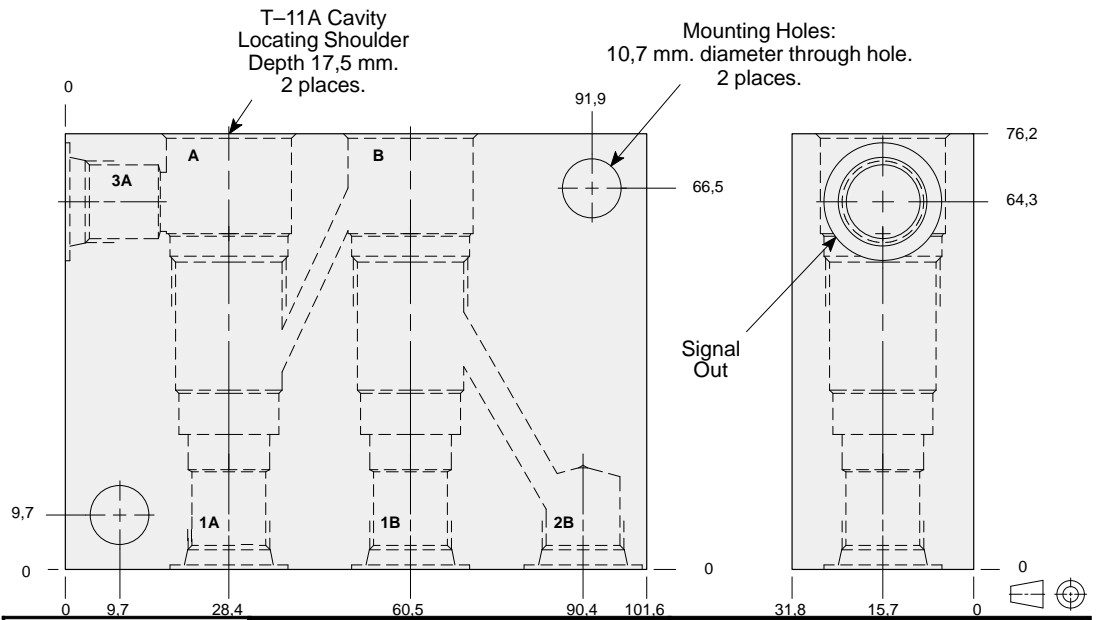
LINE MOUNT BODIES



- Aluminium rated to 210 bar and SG Iron rated to 350 bar.



Two cavity load-sensing body with three signal input.



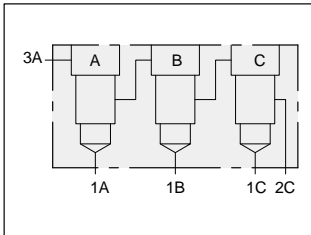
TYPICAL CARTRIDGES USED WITH THIS BODY

CSAB - *** Page 10.08
 CDAB - *** Page 10.10

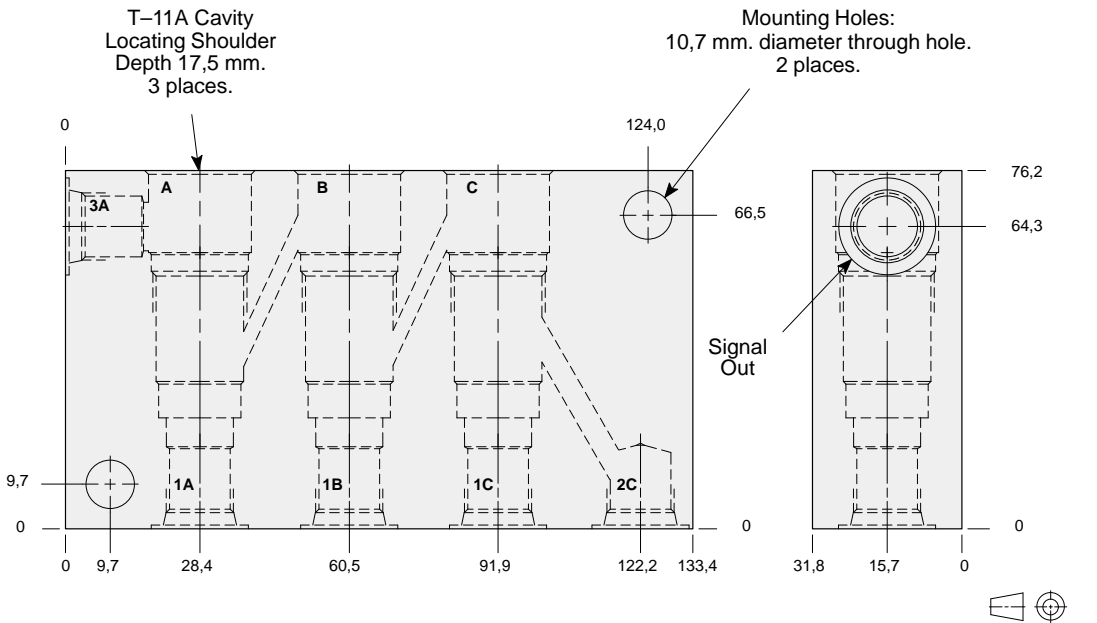
Instructions for ordering complete cartridge and body assemblies. Page viii

Pressure ratings, material specifications. Page 11.02

All Ports	ALUMINIUM		SG IRON	
	Model Code	List Price	Model Code	List Price
.25 NPTF	XVV		XVV/X	
SAE-6	XVW		XVW/S	
.25 BSPP	XVX		XVX/S	



Three cavity load-sensing body with four signal input.



TYPICAL CARTRIDGES USED WITH THIS BODY

CSAB - *** Page 10.08
 CDAB - *** Page 10.10

Instructions for ordering complete cartridge and body assemblies. Page viii

Pressure ratings, material specifications. Page 11.02

All Ports	ALUMINIUM		SG IRON	
	Model Code	List Price	Model Code	List Price
.25 NPTF	XVR		XVR/S	
SAE-6	XVS		XVS/S	
.25 BSPP	XVT		XVT/S	



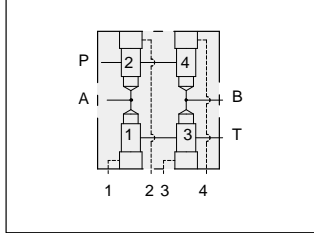
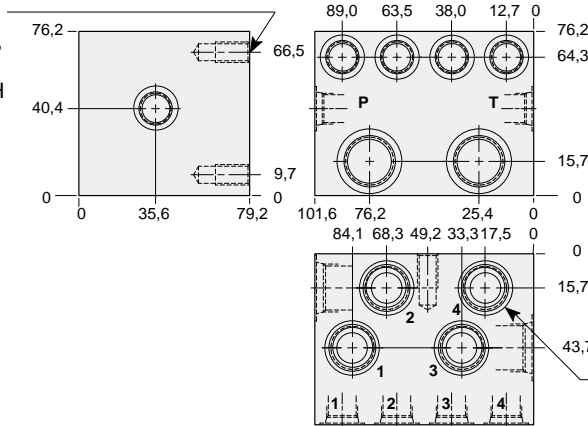
LINE MOUNT BODIES



- Aluminium rated to 210 bar and SG Iron rated to 350 bar.

Four cavity four-way logic body for directional applications.

Mounting Holes:
 Inch: .375-16 UNC-2B
 x 15,7 mm. deep.
 Metric: M10 x 1.50-6H
 x 15,7 mm. deep.
 2 places.



TYPICAL CARTRIDGES USED WITH THIS BODY

LODC - ***	Page	9.08
LKDC - ***	Page	9.10
LPDC - ***	Page	9.12
LRDC - ***	Page	9.14

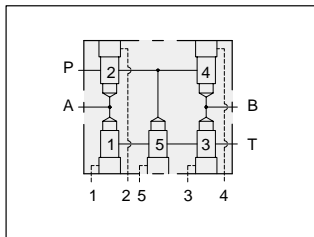
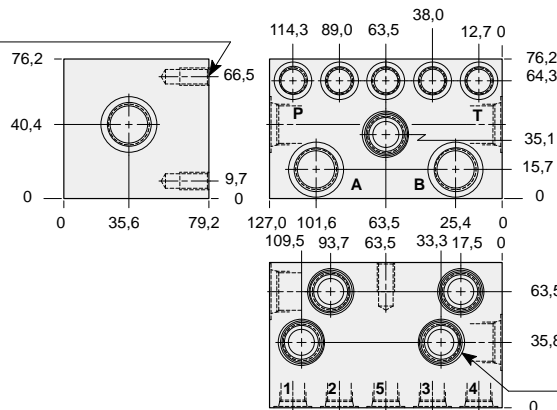
Instructions for ordering complete cartridge and body assemblies. Page viii

Pressure ratings, material specifications. Page 11.02

Mounting Hole Dimensions	Ports 1 & 2, 3 & 4	Ports A & B P & T	ALUMINIUM		SG IRON	
			Model Code	List Price	Model Code	List Price
Inch	.25 NPTF	.25 NPTF	YRZ		YRZ/S	
Inch	.25 NPTF	.375 NPTF	YRY		YRY/S	
Inch	.25 NPTF	.50 NPTF	YRX		YRX/S	
Inch	SAE-6	SAE-6	YRW		YRW/S	
Inch	SAE-6	SAE-8	YRV		YRV/S	
Inch	SAE-6	SAE-10	YRT		YRT/S	
Metric	.25 BSPP	.25 BSPP	YRP		YRP/S	
Metric	.25 BSPP	.375 BSPP	YRM		YRM/S	
Metric	.25 BSPP	.50 BSPP	YRQ		YRQ/S	

Five cavity four-way logic body for directional applications.

Mounting Holes:
 Inch: .375-16 UNC-2B
 x 15,7 mm. deep.
 Metric: M10 x 1.50-6H
 x 15,7 mm. deep.
 2 places.



TYPICAL CARTRIDGES USED WITH THIS BODY

LODC - ***	Page	9.08
LKDC - ***	Page	9.10
LPDC - ***	Page	9.12
LRDC - ***	Page	9.14

Instructions for ordering complete cartridge and body assemblies. Page viii

Pressure ratings, material specifications. Page 11.02

Mounting Hole Dimensions	Ports 1, 2, 3, 4 & 5	Ports A & B P & T	ALUMINIUM		SG IRON	
			Model Code	List Price	Model Code	List Price
Inch	.25 NPTF	.25 NPTF	YQZ		YQZ/S	
Inch	.25 NPTF	.375 NPTF	YQY		YQY/S	
Inch	.25 NPTF	.50 NPTF	YQX		YQX/S	
Inch	SAE-6	SAE-6	YQW		YQW/S	
Inch	SAE-6	SAE-8	YQV		YQV/S	
Inch	SAE-6	SAE-10	YQT		YQT/S	
Metric	.25 BSPP	.25 BSPP	YQP		YQP/S	
Metric	.25 BSPP	.375 BSPP	YQM		YQM/S	
Metric	.25 BSPP	.50 BSPP	YQQ		YQQ/S	