

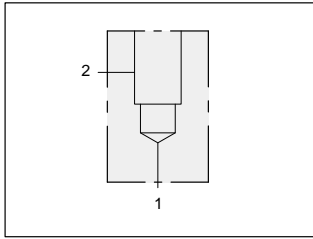


LINE MOUNT BODIES



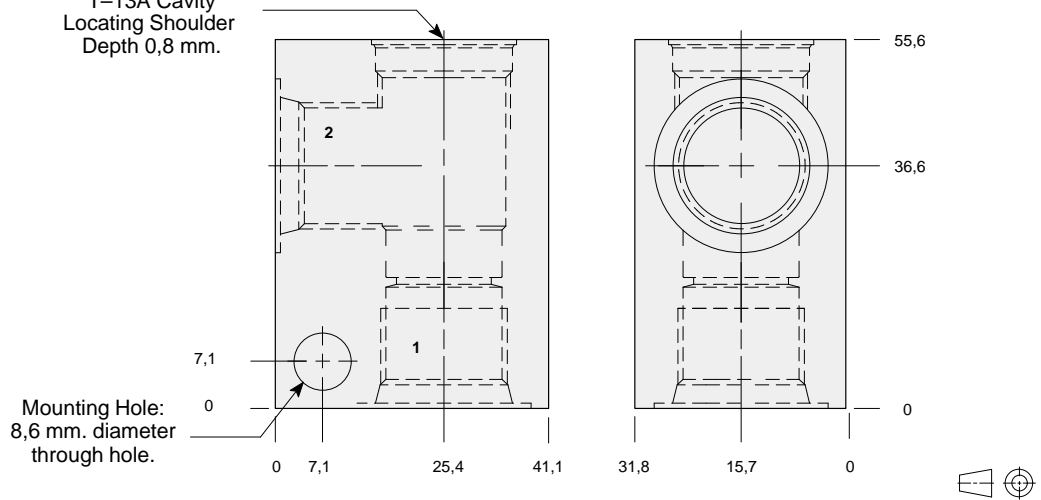
- Aluminium rated to 210 bar and SG Iron rated to 350 bar.

Series 1 T-13A



90 degree body.

T-13A Cavity
Locating Shoulder
Depth 0,8 mm.

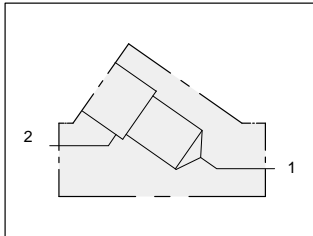


TYPICAL CARTRIDGES USED WITH THIS BODY

CXDA - ***	Page	5.08
CXCD - ***	Page	5.10
NFCC - ***	Page	5.12
CNCC - ***	Page	5.14
NCCB - ***	Page	5.16
NCCC - ***	Page	5.18
FXCA - ***	Page	5.20
FCCB - ***	Page	5.22
FDBA - ***	Page	5.24
CSAA - ***	Page	10.09
CSAC - ***	Page	10.09
CDAA - ***	Page	10.11
CDAC - ***	Page	10.11
FQCA - ***	Page	10.14

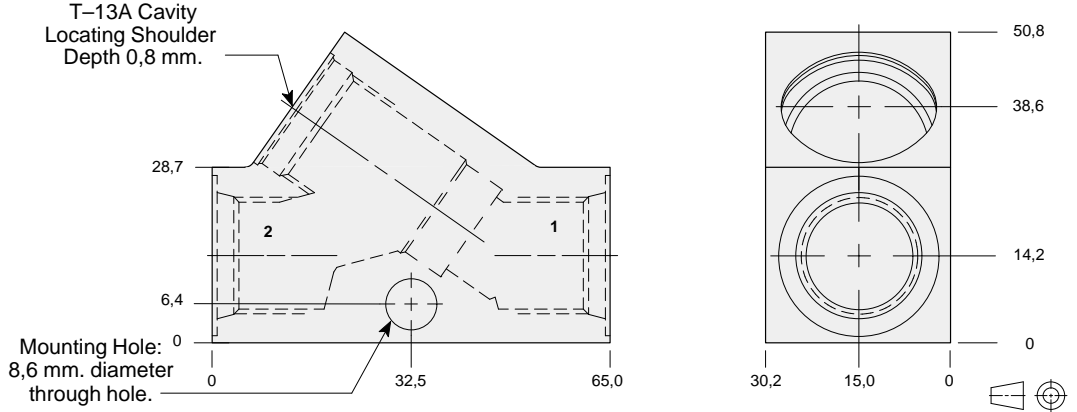
Instructions for ordering complete cartridge and body assemblies. Page viii
Pressure ratings, material specifications. Page 11.02

Ports 1 & 2	ALUMINIUM		SG IRON	
	Model Code	List Price	Model Code	List Price
.25 NPTF	GAA		GAA/S	
.375 NPTF	GAB		GAB/S	
SAE-4	GAH		GAH/S	
SAE-6	GAI		GAI/S	
SAE-8	GAJ		GAJ/S	
.25 BSPP	GAT		GAT/S	
.375 BSPP	GAU		GAU/S	



Inline body.

T-13A Cavity
Locating Shoulder
Depth 0,8 mm.



TYPICAL CARTRIDGES USED WITH THIS BODY

CXDA - ***	Page	5.08
CXCD - ***	Page	5.10
NFCC - ***	Page	5.12
CNCC - ***	Page	5.14
NCCB - ***	Page	5.16
NCCC - ***	Page	5.18
FXCA - ***	Page	5.20
FCCB - ***	Page	5.22
FDBA - ***	Page	5.24
CSAA - ***	Page	10.09
CSAC - ***	Page	10.09
CDAA - ***	Page	10.11
CDAC - ***	Page	10.11
FQCA - ***	Page	10.14

Instructions for ordering complete cartridge and body assemblies. Page viii
Pressure ratings, material specifications. Page 11.02

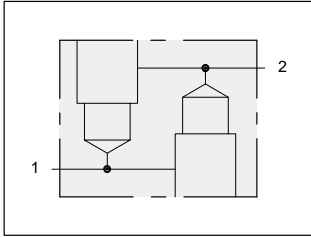
Ports 1 & 2	ALUMINIUM		SG IRON	
	Model Code	List Price	Model Code	List Price
.25 NPTF	GCA		GCA/S	
.375 NPTF	GCB		GCB/S	
SAE-4	GCH		GCH/S	
SAE-6	GCI		GCI/S	
SAE-8	GCJ		GCJ/S	
.25 BSPP	GCT		GCT/S	
.375 BSPP	GCU		GCU/S	



LINE MOUNT BODIES

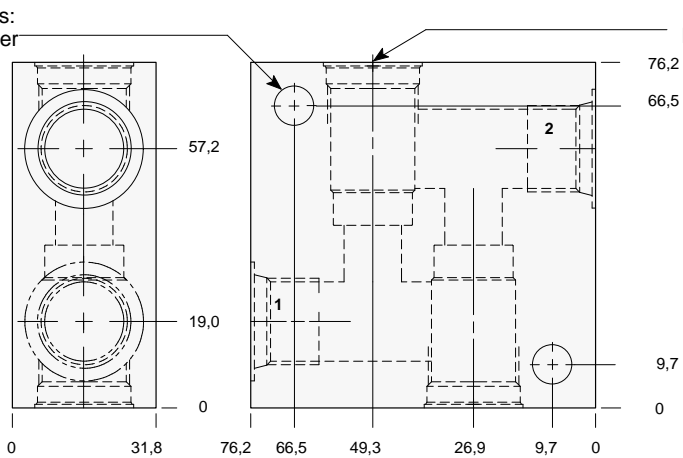


- Aluminium rated to 210 bar and SG Iron rated to 350 bar.



Two cavity inline body.

Mounting Holes:
8,6 mm. diameter
through hole
2 places.



T-13A Cavity
Locating Shoulder
Depth 0,8 mm.
2 places

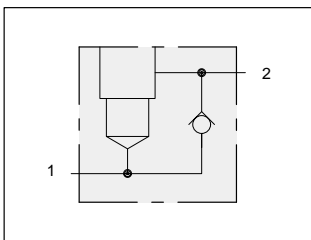
TYPICAL CARTRIDGES USED WITH THIS BODY

- CXDA - *** Page 5.08
- NFCC - *** Page 5.12
- FXCA - *** Page 5.20

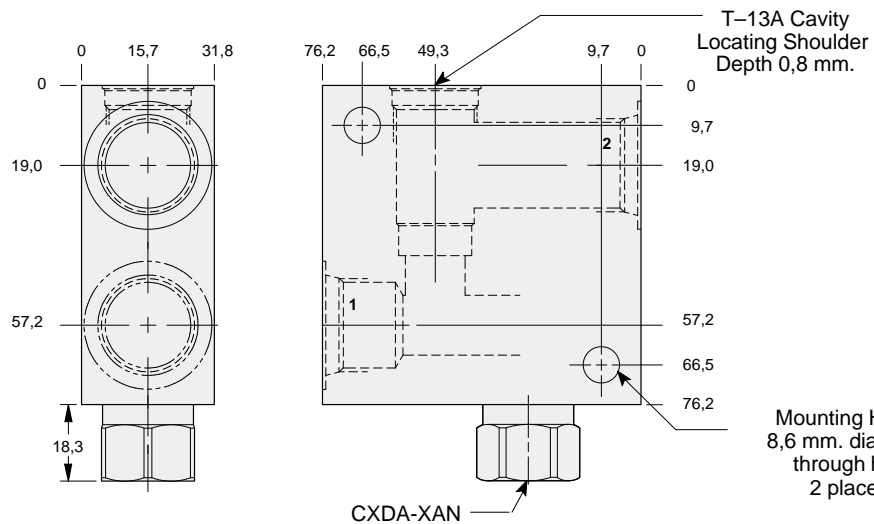
Instructions for ordering complete cartridge and body assemblies. Page viii

Pressure ratings, material specifications. Page 11.02

Ports 1 & 2	ALUMINIUM		SG IRON	
	Model Code	List Price	Model Code	List Price
.25 NPTF	XWL		XWL/S	
.375 NPTF	XWM		XWM/S	
SAE-6	XWN		XWN/S	
SAE-8	XWP		XWP/S	
.25 BSPP	XWQ		XWQ/S	
.375 BSPP	XWR		XWR/S	



Inline body with reverse free flow check.



TYPICAL CARTRIDGES USED WITH THIS BODY

- NFCC - *** Page 5.12
- FXCA - *** Page 5.20

Cartridge seal type determines check valve seal type.

Instructions for ordering complete cartridge and body assemblies. Page viii

Pressure ratings, material specifications. Page 11.02

Ports 1 & 2	ALUMINIUM		SG IRON	
	Model Code	List Price	Model Code	List Price
.25 NPTF	GNL		GNL/S	
.375 NPTF	GNM		GNM/S	
SAE-6	GNN		GNN/S	
SAE-8	GNP		GNP/S	
.25 BSPP	GNQ		GNQ/S	
.375 BSPP	GNR		GNR/S	

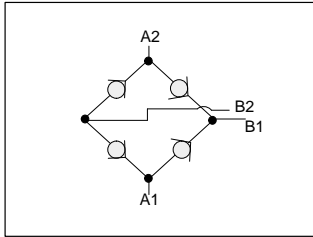
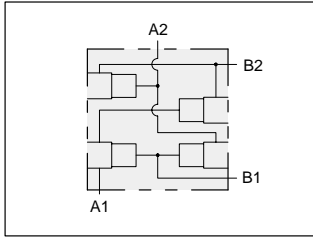


LINE MOUNT BODIES



- Aluminium rated to 210 bar and SG Iron rated to 350 bar.

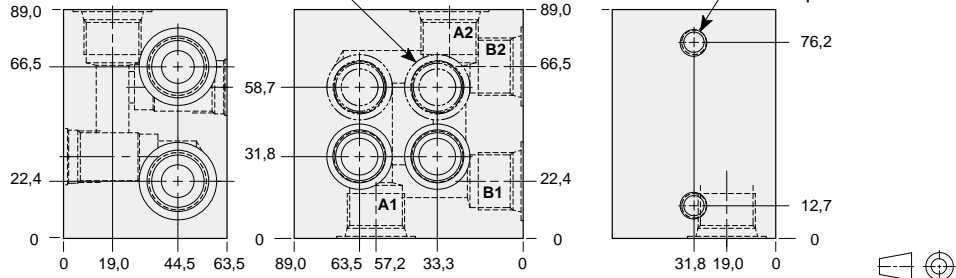
Series 1 T-13A



Rectifier body.

T-13A Cavity
Locating Shoulder
Depth 0,8 mm.
4 places.

Mounting Holes:
Inch: .375-16 UNC-2B
x 15,7 mm. deep.
Metric: M10 x 1.50-6H
x 15,7 mm. deep.
2 places.



TYPICAL CARTRIDGES USED WITH THIS BODY

CXDA - *** Page 5.08

Instructions for ordering complete cartridge and body assemblies. Page viii

Pressure ratings, material specifications. Page 11.02

Mounting Hole Dimensions	Ports 1 & 2	ALUMINIUM		SG IRON	
		Model Code	List Price	Model Code	List Price
Inch	.25 NPTF	YSR		YSE/S	
Inch	.375 NPTF	YSS		YSS/S	
Inch	.50 NPTF	YST		YST/S	
Inch	SAE-6	YSU		YSU/S	
Inch	SAE-8	YSV		YSV/S	
Inch	SAE-10	YSW		YSW/S	
Metric	.25 BSPP	YSX		YSX/S	
Metric	.375 BSPP	YSY		YSY/S	
Metric	.50 BSPP	YSZ		YSZ/S	