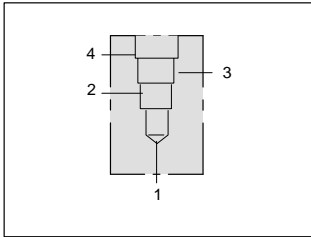




LINE MOUNT BODIES



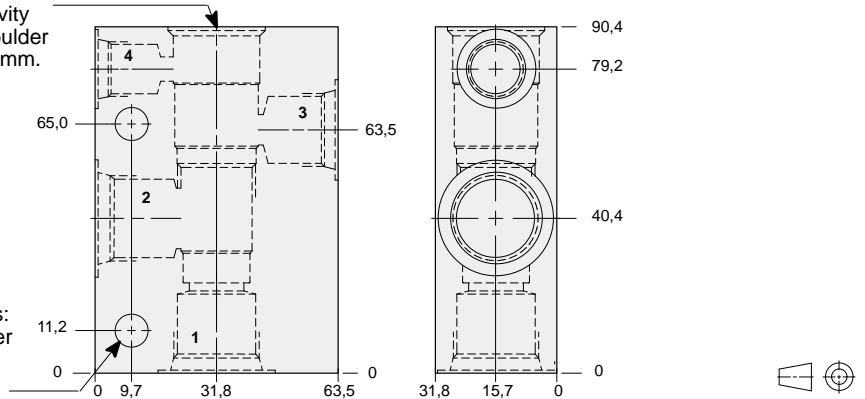
- Aluminium rated to 210 bar and SG Iron rated to 350 bar.



90 degree body.

T-21A Cavity
Locating Shoulder
Depth 31,8 mm.

Mounting Holes:
8,6 mm. diameter
through hole
2 places.



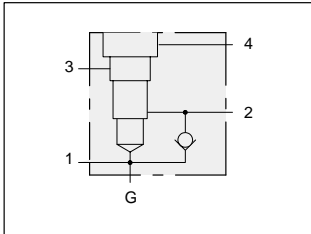
TYPICAL CARTRIDGES USED WITH THIS BODY

RVCD - ***	Page	1.20
PVDA - ***	Page	3.14
PVDB - ***	Page	3.16
CWCA - ***	Page	4.18
CWCG - ***	Page	4.20
CVCV - ***	Page	4.22
FVCA - ***	Page	6.04
DPBM - ***	Page	8.10
DPBN - ***	Page	8.11
DPBO - ***	Page	8.12
DPBP - ***	Page	8.13

Instructions for ordering complete cartridge and body assemblies. Page viii

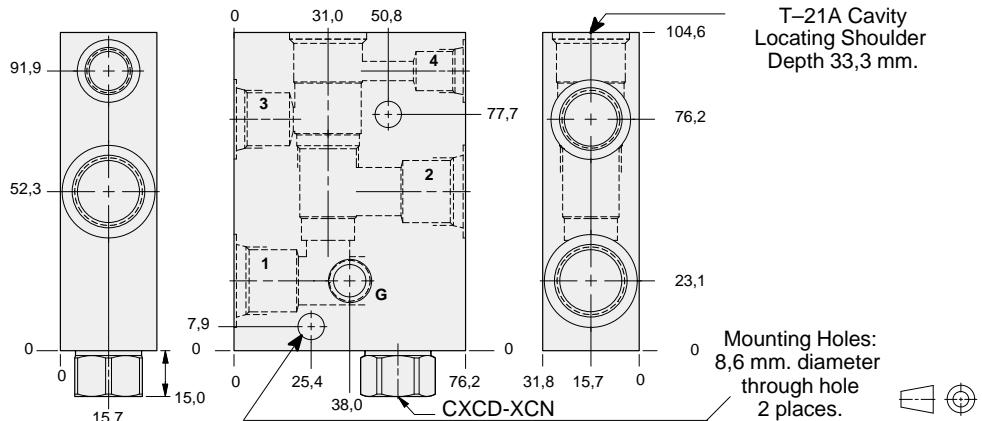
Pressure ratings, material specifications. Page 11.02

Ports 1 & 2	Port 3	Port 4	ALUMINIUM		SG IRON	
			Model Code	List Price	Model Code	List Price
.25 NPTF	.25 NPTF	.25 NPTF	MAA		MAA/S	
.375 NPTF	.375 NPTF	.25 NPTF	MAB		MAB/S	
.50 NPTF	.375 NPTF	.25 NPTF	MAC		MAC/S	
SAE-6	SAE-6	SAE-6	MAI		MAI/S	
SAE-8	SAE-8	SAE-6	MAJ		MAJ/S	
SAE-10	SAE-8	SAE-6	MAK		MAK/S	
.25 BSPP	.25 BSPP	.25 BSPP	MAT		MAT/S	
.375 BSPP	.375 BSPP	.25 BSPP	MAU		MAU/S	
.50 BSPP	.375 BSPP	.25 BSPP	MAV		MAV/S	



Body with reverse free flow check and gauge port for reducing/relieving applications.

T-21A Cavity
Locating Shoulder
Depth 33,3 mm.



Mounting Holes:
8,6 mm. diameter
through hole
2 places.

TYPICAL CARTRIDGES USED WITH THIS BODY

PVDA - ***	Page	3.14
PVDB - ***	Page	3.16

Cartridge seal type determines check valve seal type.

Instructions for ordering complete cartridge and body assemblies. Page viii

Pressure ratings, material specifications. Page 11.02

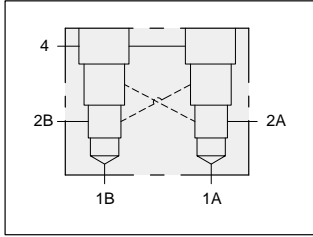
Ports 1 & 2	Port 3	Port 4	Gauge Port	ALUMINIUM		SG IRON	
				Model Code	List Price	Model Code	List Price
.25 NPTF	.25 NPTF	.25 NPTF	.25 NPTF	M4A		M4A/S	
.375 NPTF	.375 NPTF	.375 NPTF	.25 NPTF	M4B		M4B/S	
.50 NPTF	.50 NPTF	.50 NPTF	.25 NPTF	M4C		M4C/S	
SAE-6	SAE-6	SAE-6	.25 NPTF	M4I		M4I/S	
SAE-8	SAE-8	SAE-6	.25 NPTF	M4J		M4J/S	
SAE-10	SAE-8	SAE-6	.25 NPTF	M4K		M4K/S	
.25 BSPP	.25 BSPP	.25 BSPP	.25 BSPP	M4T		M4T/S	
.375 BSPP	.375 BSPP	.25 BSPP	.25 BSPP	M4U		M4U/S	
.50 BSPP	.375 BSPP	.25 BSPP	.25 BSPP	M4V		M4V/S	



LINE MOUNT BODIES



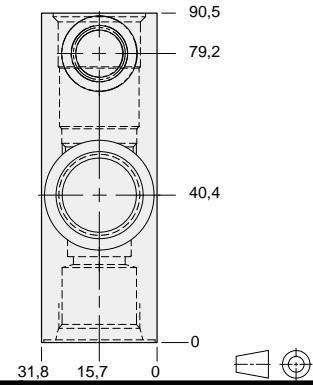
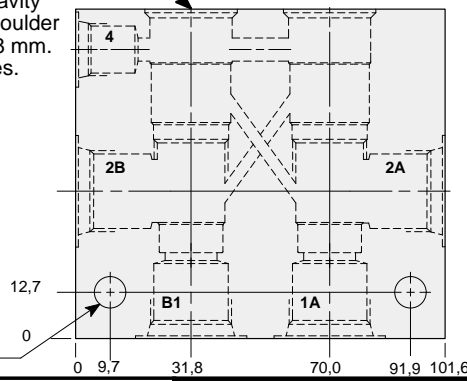
- Aluminium rated to 210 bar and SG Iron rated to 350 bar.



Two cavity 90 degree cross-piloted body with common port 4 for load control applications.

T-21A Cavity Locating Shoulder Depth 31,8 mm. 2 places.

Mounting Holes: 8,6 mm. diameter through hole 2 places.

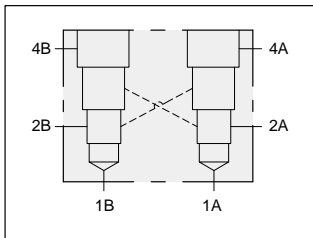


TYPICAL CARTRIDGES USED WITH THIS BODY

- CWCA - *** Page 4.18
- CWCG - *** Page 4.20
- CVCV - *** Page 4.22

Instructions for ordering complete cartridge and body assemblies. Page iii
 Pressure ratings, material specifications. Page 11.02

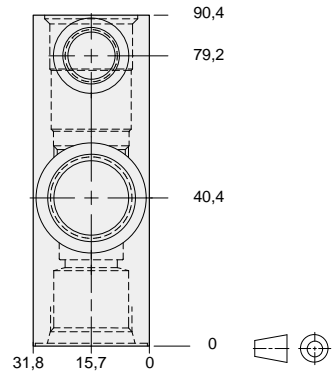
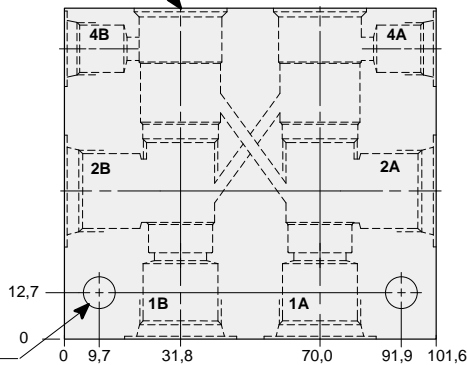
Main Ports 1A,1B & 2A,2B	Port 4	ALUMINIUM		SG IRON	
		Model Code	List Price	Model Code	List Price
.25 NPTF	.25 NPTF	XPA		XPA/S	
.375 NPTF	.25 NPTF	XPB		XPB/S	
.50 NPTF	.25 NPTF	XPC		XPC/S	
SAE-6	SAE-6	XPI		XPI/S	
SAE-8	SAE-6	XPJ		XPJ/S	
SAE-10	SAE-6	XPK		XPK/S	
.25 BSPP	.25 BSPP	XPT		XPT/S	
.375 BSPP	.25 BSPP	XPU		XPU/S	
.50 BSPP	.25 BSPP	XPV		XPV/S	



Two cavity 90 degree cross-piloted body with independent port 4 for load control applications.

T-21A Cavity Locating Shoulder Depth 31,8 mm. 2 places.

Mounting Holes: 8,6 mm. diameter through hole 2 places.



TYPICAL CARTRIDGES USED WITH THIS BODY

- CWCA - *** Page 4.18
- CWCG - *** Page 4.20
- CVCV - *** Page 4.22

Instructions for ordering complete cartridge and body assemblies. Page iii
 Pressure ratings, material specifications. Page 11.02

Main Ports 1A,1B & 2A,2B	Ports 4A & 4B	ALUMINIUM		SG IRON	
		Model Code	List Price	Model Code	List Price
.25 NPTF	.25 NPTF	XFA		XFA/S	
.375 NPTF	.25 NPTF	XFB		XFB/S	
.50 NPTF	.25 NPTF	XFC		XFC/S	
SAE-6	SAE-6	XFI		XFI/S	
SAE-8	SAE-6	XFJ		XFJ/S	
SAE-10	SAE-6	XFK		XFK/S	
.25 BSPP	.25 BSPP	XFT		XFT/S	
.375 BSPP	.25 BSPP	XFU		XFU/S	
.50 BSPP	.25 BSPP	XFV		XFV/S	